



## MEETING INSTRUCTIONS

### Tonight's Schedule

- 6:30 - Zoom Meeting Opens to Attendees
- 7:00 - Meeting Begins

### Questions and Comments

- Attendees will be muted during the presentation
- Questions and comments will be addressed at the end of the meeting. Enter questions in Q&A box (using app/browser.)
- To raise your hand:
  - Zoom App: Use the "Raise Hand" button
  - Phone: Press \*9



# **EISENHOWER AVENUE WIDENING AND ROADWAY IMPROVEMENTS**

**Virtual Community Open House  
December 15, 2020**

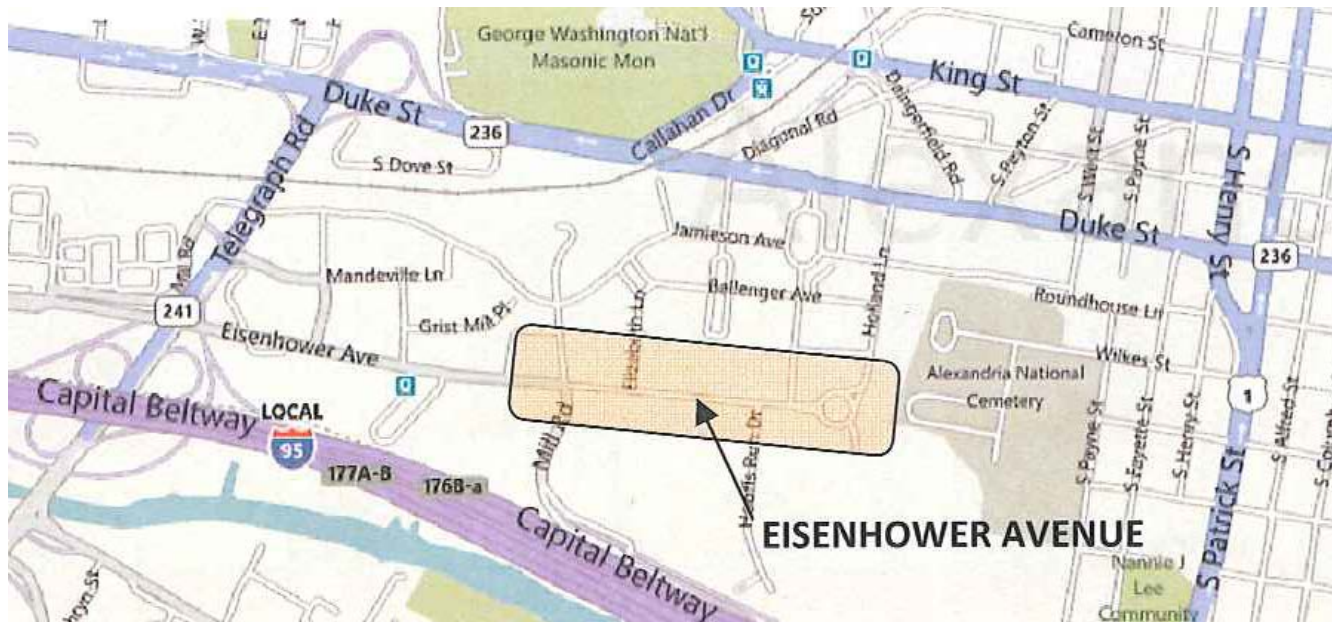
Demond Frazier, Project Manager  
Department of Project Implementation

# PRESENTATION OUTLINE

- Project Overview
- Project Purpose
- Existing Condition
- Proposed Condition
- What To Expect During Construction
- Questions/Comments

# PROJECT OVERVIEW

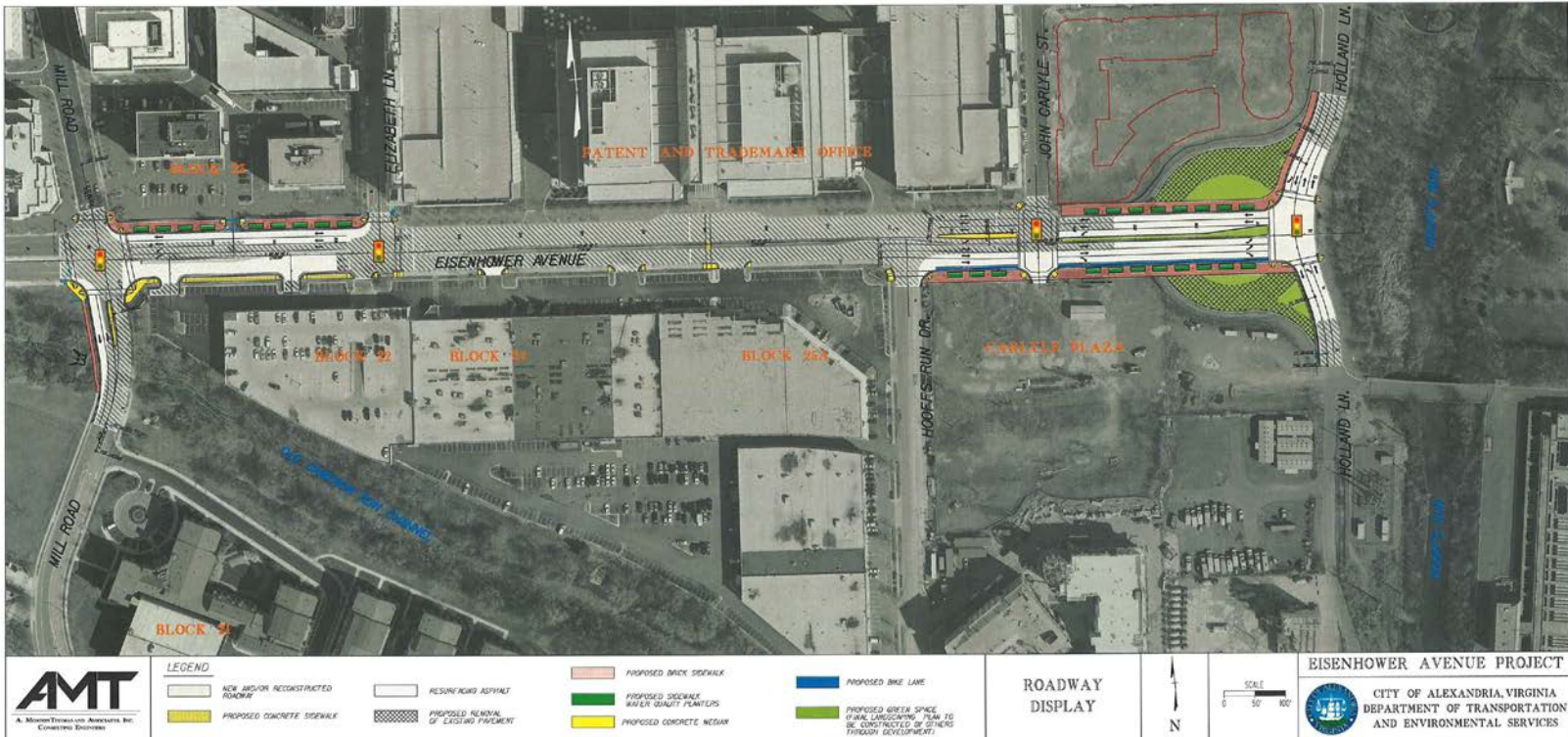
- Location: Eisenhower Avenue between Mill Road and Holland Lane
- Origin: 2003 Eisenhower East Small Area Plan
- Approval: City Council Authorized Design 2013



# PROJECT PURPOSE

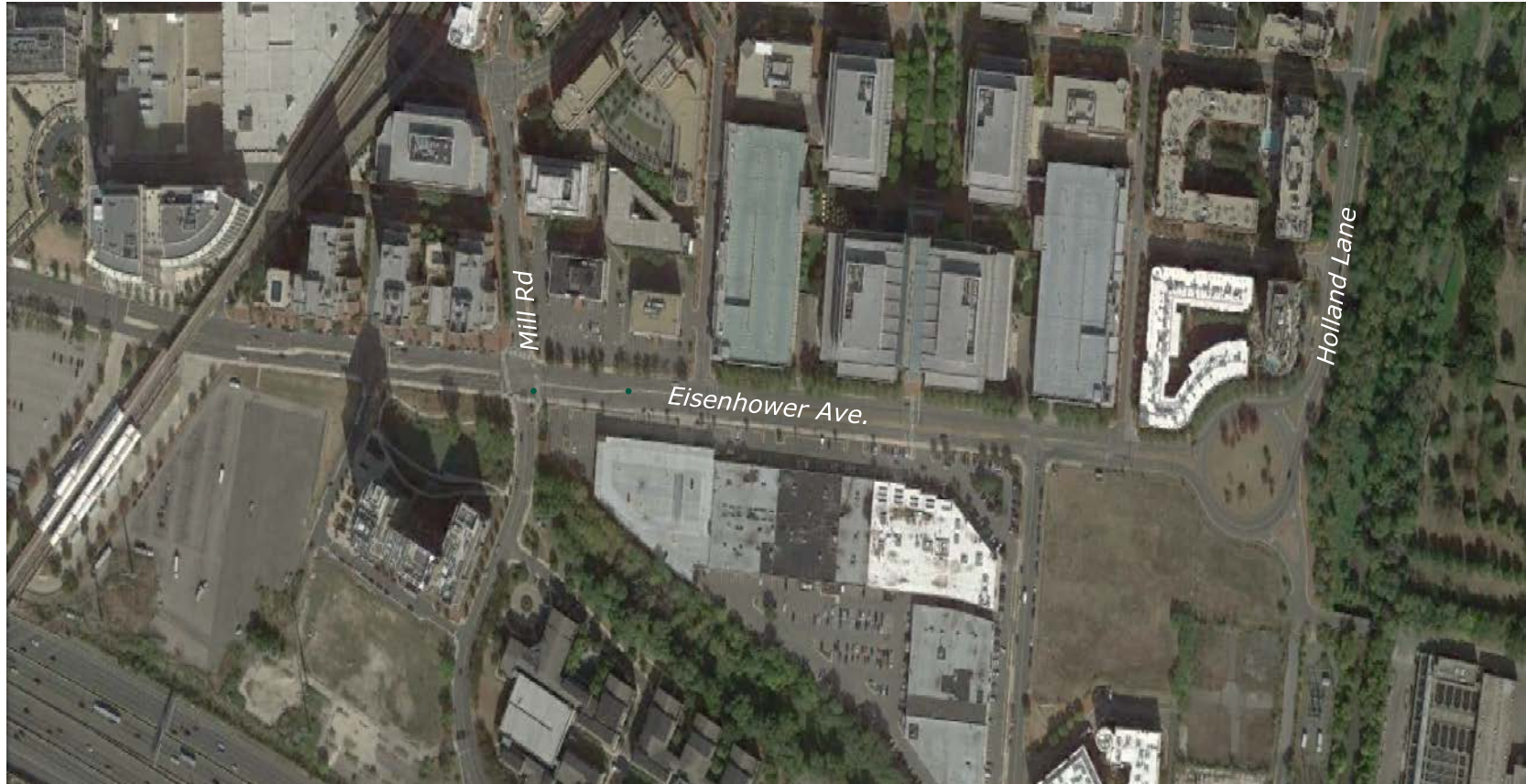
- Increase traffic capacity
- Promote safety for pedestrians, bicyclist and motorists
- Enhance streetscape features
- Create a multimodal environment
- Reduce traffic delays in the corridor

# PROJECT PURPOSE





# EXISTING CONDITIONS



# EXISTING CONDITIONS



- *Eisenhower at Mill Road*



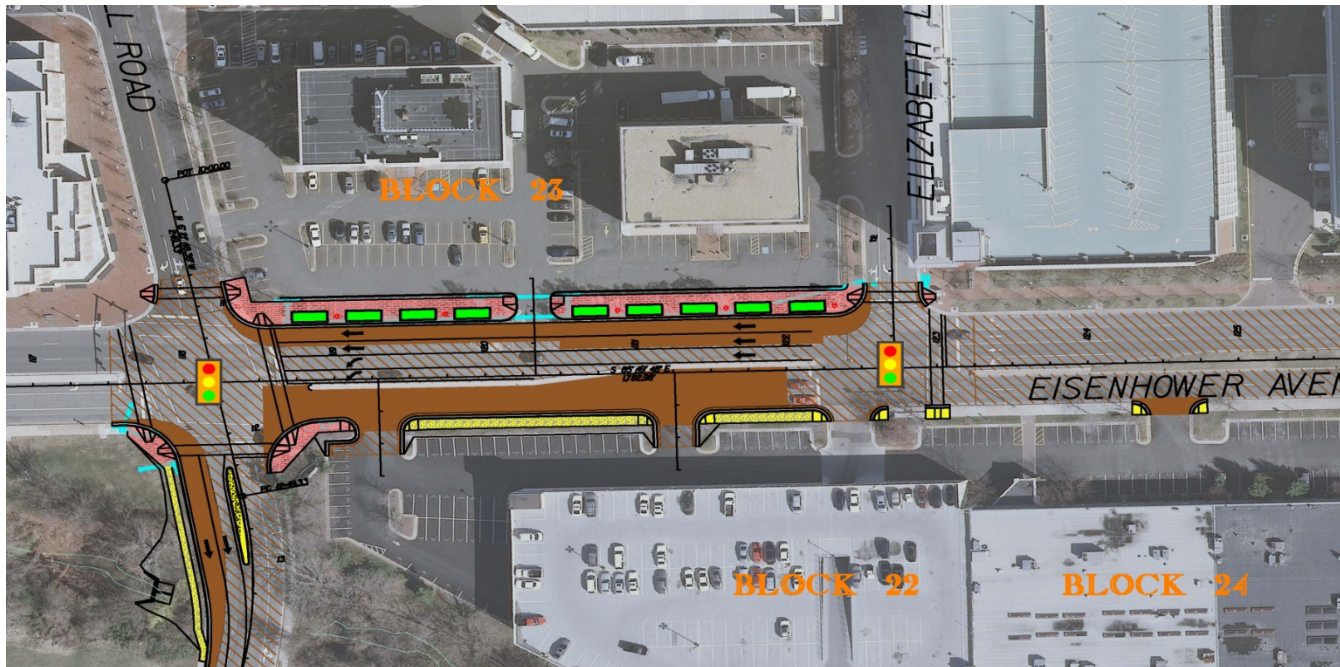
# EXISTING CONDITIONS



- *Eisenhower at Holland Lane*

# EISENHOWER AVENUE AT MILL ROAD (PROPOSED)

- Add second left turn lane from westbound Eisenhower Avenue onto Mill Road
- Expand Mill Road to accept new turn lane
- Install ADA ramps and crosswalks on impacted corners

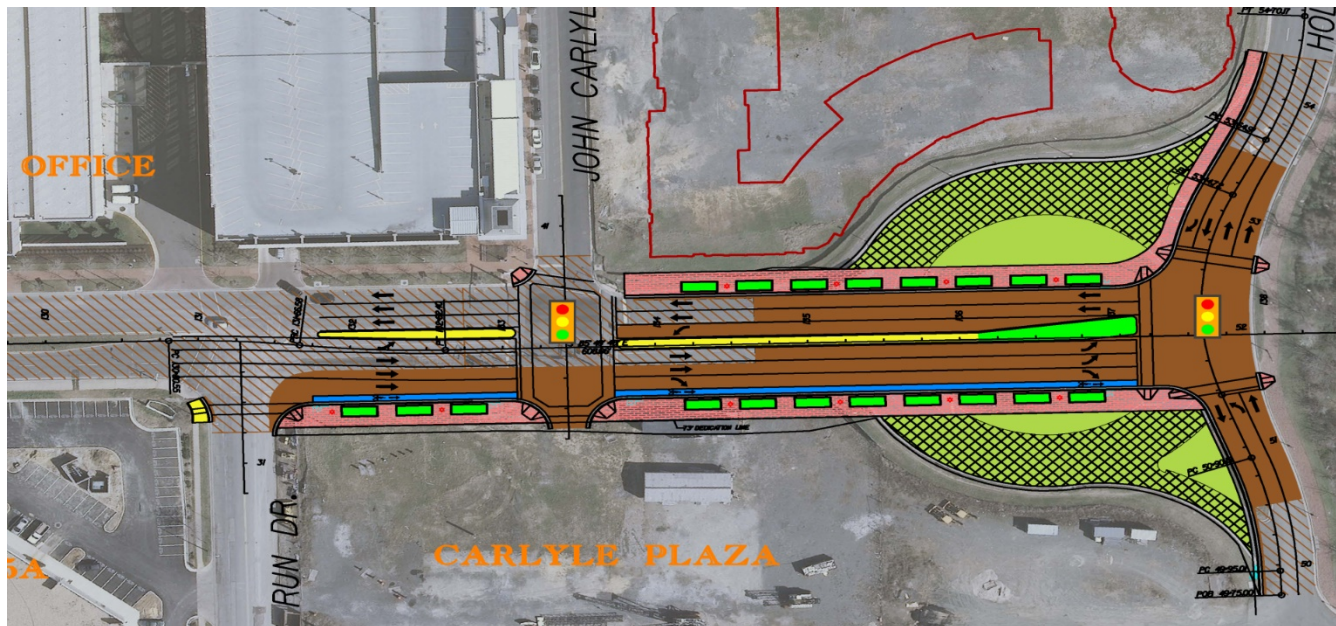




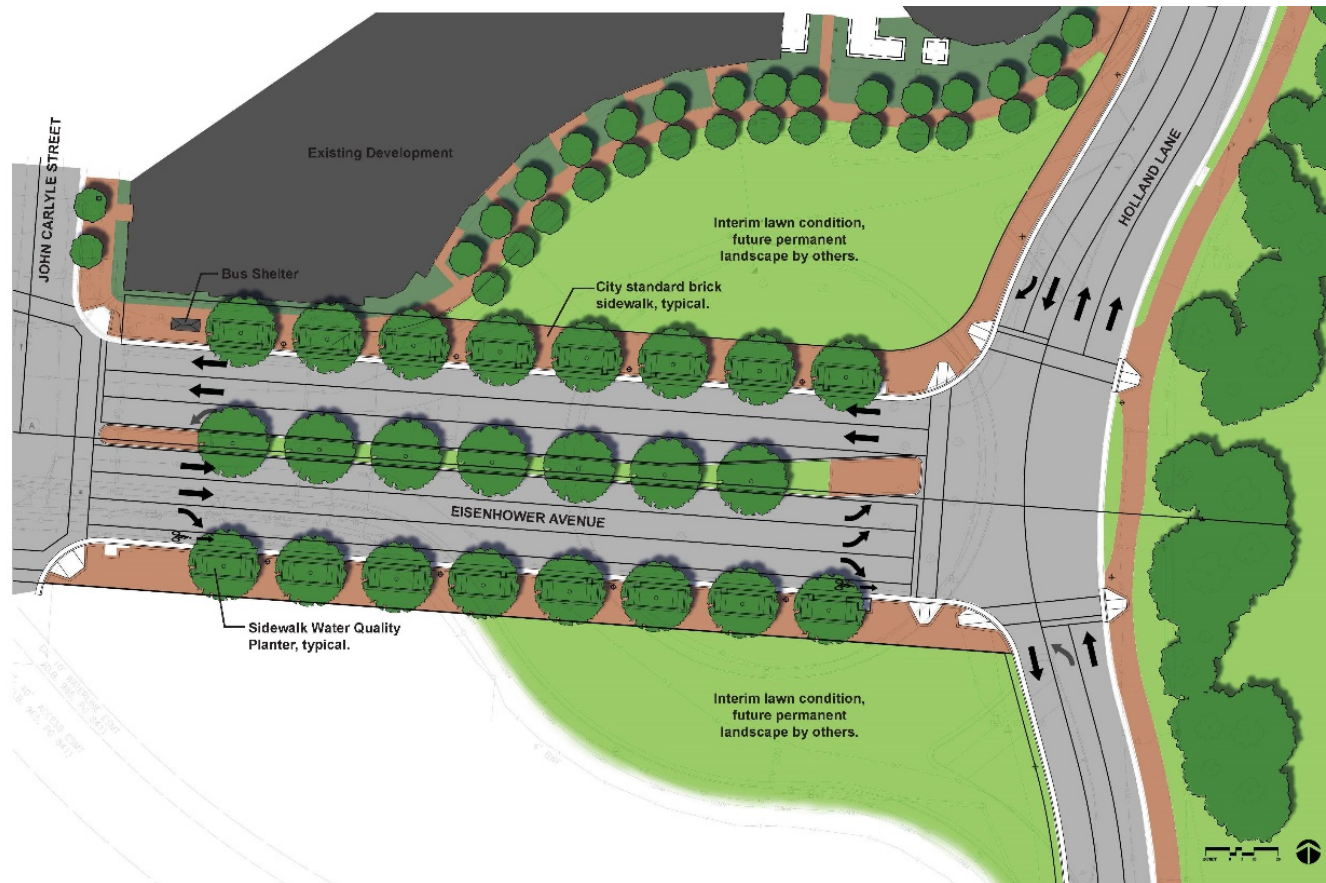
# EISENHOWER AVENUE AT HOLLAND LANE (PROPOSED)



- Convert the roundabout into a signalized "T" intersection
- Convert roadway into greenspace
- Install water quality planters along Eisenhower Avenue

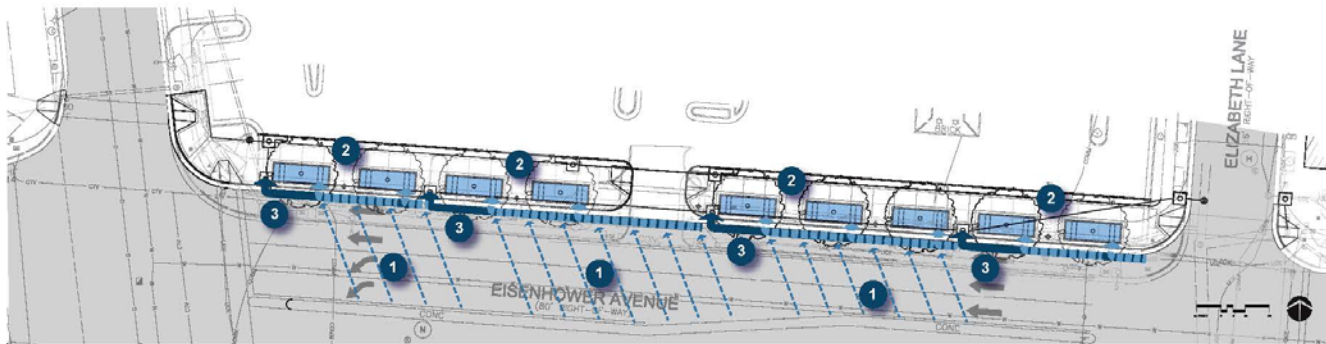


# GREENSPACE DETAIL (PROPOSED)



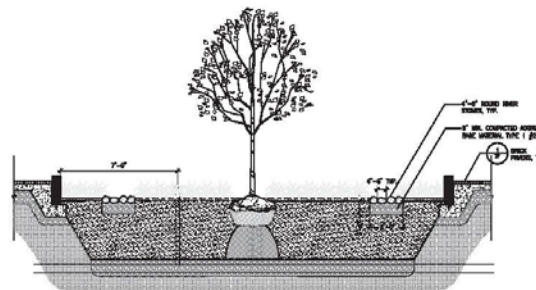
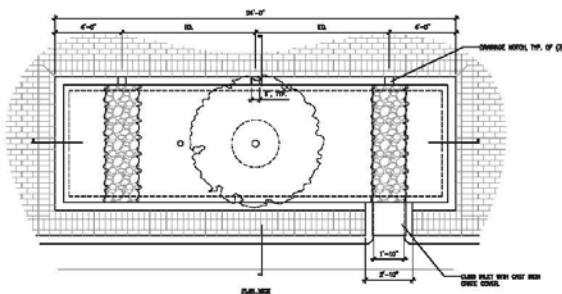


# WATER QUALITY PLANTERS (PROPOSED)

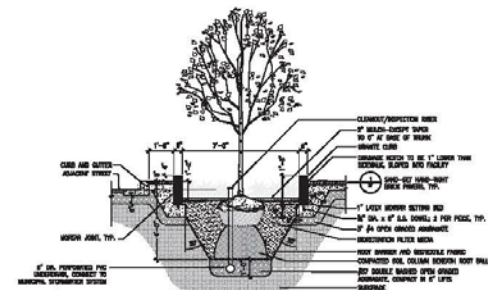


- 1 Rain water flows from the street and is collected in the gutters
- 2 The rain water flows into the sidewalk water quality planters and percolates through the soil media to the under drain system.
- 3 Overflow from inundated sidewalk water quality planters would bypass the planter inlets and travel to the nearest stormwater inlet.

STORMWATER FLOW DIAGRAM



SIDEWALK WATER QUALITY PLANTER LONGITUDINAL SECTION



SIDEWALK WATER QUALITY PLANTER - SECTION

SIDEWALK WATER QUALITY PLANTER DETAILS

# STREETSCAPE ENHANCEMENTS (PROPOSED)



Enhancement Examples

# WHAT TO EXPECT DURING CONSTRUCTION

- Construction Hours:
  - Monday – Friday: 9:00 AM to 3:30 PM
  - Saturday: 9:00 AM to 6:00 PM
- No impact to driveway or parking lot access
- Contractor will provide construction phasing and traffic control plans prior to start of construction

# WHAT TO EXPECT DURING CONSTRUCTION

- Construction Begins: Winter 2020
- Substantial Completion: Spring 2022
- *Dates subject to change due to COVID-19 and weather-related impacts*
- Contractor – Sagres Construction Corporation
- Construction Management and Inspections - Whitman, Requardt & Associates, LLP (WRA)



# QUESTIONS / COMMENTS



# THANK YOU

Demond Frazier, PE  
Department of Project Implementation  
703.746.4632

[demond.frazier@alexandriava.gov](mailto:demond.frazier@alexandriava.gov)