

St. Asaph Park

History and Character

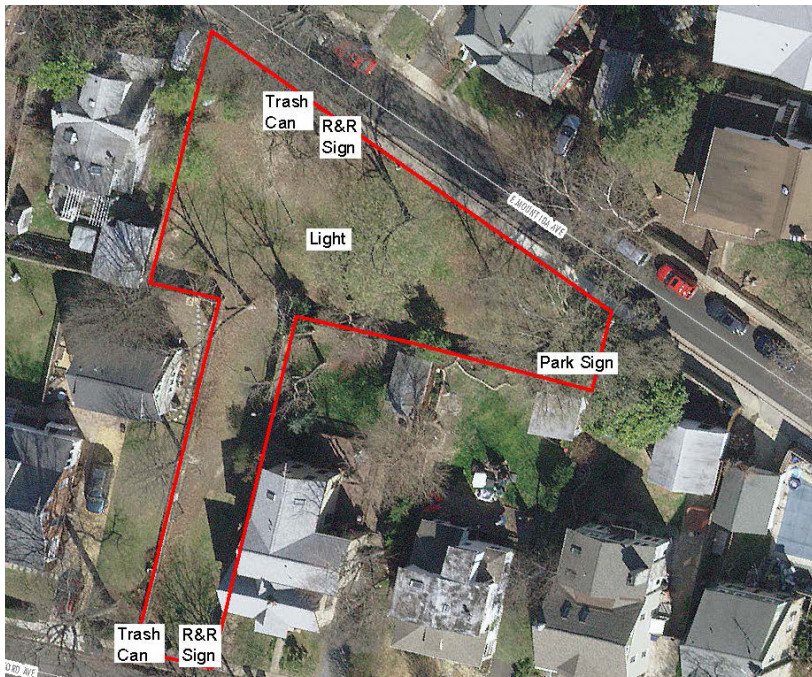
St. Asaph Park is located at 221 East Mount Ida Avenue in the Del Ray neighborhood. There are no documented historic sites within the park.

The Del Ray Citizen's Association has adopted St. Asaph Park.

The 0.26 acre park is located along East Mt. Ida Avenue with an additional entrance along East Oxford Avenue. The surrounding neighborhood includes residential homes, the Alexandria Department of Community and Human Service headquarters, Mount Vernon Community School, Mount Vernon Recreation Center, and the popular commercial area along Mount Vernon Avenue.

The park features large shade trees, grassy passive space, and small lights. The park is unprogrammed despite being located in an active neighborhood.

Existing Conditions Map



St. Asaph Park

Which of the following existing park elements would you like to preserve, enhance, or transform?					
Element	Park sign		Element	Pass through	
Number of responses	1		Number of responses	1	
Value	Count	Percent	Value	Count	Percent
Preserve it	0	0	Preserve it	0	0
Enhance it	1	100	Enhance it	1	100
Transform it	0	0	Transform it	0	0

Element	Open Area	
Number of responses	1	
Value	Count	Percent
Preserve it	0	0
Enhance it	0	0
Transform it	1	100

What is currently NOT in the park that you would like to see there?

1. Something that could be a gathering spot for neighbors - game table/bocce court/picnic table

St. Asaph

Preserve	Enhance	Transform
<p>1. open space</p>	<p>1. Picnic table 2. Get rid of swamp. 3. Public lot - to connect both sides</p>	<p>1. Remove center light that blocks the open space 2. Remove barberry bushes, replace with native plants. 3. Clean up road and remove weeds add street garden.</p>

The image above are the results from the open house used to feed the initial St. Asaph park plan community survey, which was then used to create the draft recommendations.

Community Feedback

In Fall 2018, staff collected community feedback to understand how the park is used and how it could be improved in the future. The following information summarizes what we heard through an online survey, community workshop, and community meeting. Over 400 people responded to the survey in total, 7 of which were specific to St. Asaph Park. Staff used the collected information to develop the draft park plans.

In 10 years, I would like this Park to...

(Top 3 rankings shown, based on a weighted score)

1. Be a safe place for children to explore
2. Be a place to relax
3. Be a place to create social connections with neighbors



The image above is an example of a traffic box that has a mylar wrap around it. The plan for St. Asaph Park recommends wrapping the existing utility box with a nature inspired, artistic mylar wrap.

Colorful mylar wraps, convert functional infrastructure into community art pieces.

St. Asaph Park

Which of the following existing proposed park elements do you love, like, or not like?					
Recommendation	Lights		Recommendation	Path	
Number of responses	34		Number of responses	33	
Value	Count	Percent	Value	Count	Percent
I love it!	20	59	I love it!	14	42
I like it	11	32	I like it	5	15
I don't like it	3	9	I don't like it	14	42
Recommendation	Native plant/pollinator		Recommendation	Picnic tables	
Number of responses	32		Number of responses	32	
Value	Count	Percent	Value	Count	Percent
I love it!	25	78	I love it!	14	44
I like it	5	16	I like it	5	16
I don't like it	2	6	I don't like it	13	41
Recommendation	Drainage		Recommendation	Signage	
Number of responses	34		Number of responses	33	
Value	Count	Percent	Value	Count	Percent
I love it!	28	82	I love it!	13	39
I like it	3	3	I like it	15	45
I don't like it	3	9	I don't like it	5	15
Recommendation	Utility box		Recommendation	Plantings & invasive	
Number of responses	34		Number of responses	33	
Value	Count	Percent	Value	Count	Percent
I love it!	14	41	I love it!	24	73
I like it	12	35	I like it	7	21
I don't like it	8	24	I don't like it	2	6

In the summer of 2019 RPCA staff collected community feedback on the draft recommendations for improving this pocket park. The following information summarizes what was heard through online surveys and community feedback (see appendix for full results). Over 700 responses were collected in total, 34 of which were specific to St. Asaph Park.

Based on information from the summer input phase, staff updated the plan to best represent current and future community needs. The changes to the draft plan support the preservation of the open space, by relocating the path to the edge of the park. Another change from the draft park plan is the replacement of the recommendation to add picnic tables and instead install movable seating so that the open space is maintained and seating is provided in the park.

Improvement Recommendations

- Upgrade and relocate the lights in the park**
The existing light fixtures are in poor condition and are located in areas that limit use of the park. Updating and relocating the lights would help create more space for park use.
- Install a walking path**
An accessible walking path through the park would connect the two park entrances. A loop through the open space would provide a defined social space and accessibility to the picnic tables.
- Provide a native plant/pollinator garden**
A native plant/pollinator garden will be visually pleasing and provide an area for natural habitat within a largely urban setting.
- Install picnic tables**
Community feedback indicated a desire to relax and create social connections in the park. Picnic tables would provide a place to relax, picnic, and socialize.
- Resolve drainage issues**
Rainwater and runoff causes ponding throughout the park. Study the drainage issues to determine the cause and implement an appropriate solution.
- Relocate the park sign**
The park sign is currently somewhat hidden and not near the most used entrance to the park. Additionally, community feedback indicated a desire to remove the barberry bushes along E. Mt. Ida Avenue. Placing an updated park sign where the barberry bushes are currently located, also near the new walking path, would provide a clearer entrance to the park.
- Cover utility box with mylar patterned cover**
Similar to the traffic control box wraps project conducted throughout the City in 2015 and 2016, cover the existing green utility box with a patterned wrap.
- Remove invasive species and preserve native plants**
Develop and implement a plan to remove invasive species, such as barberry bushes, throughout the park. Ensure that native plants in the park are identified and preserved.

St. Asaph Park

Improvement Recommendations

- 1 Upgrade and relocate the lights in the park**
The existing light fixtures are in poor condition and are located in areas that limit use of the park. Update and relocate the lights to create more space for park use.
- 2 Install a walking path**
An accessible walking path through the park connects the two park entrances. The path provides access to the picnic tables while maintaining open space in the center of the park. Evaluate future desire lines to determine if a second entrance is needed.
- 3 Provide a native plant/pollinator garden**
A native plant/pollinator garden is visually pleasing and provides an area for natural habitat within a largely urban setting.
- 4 Create a seating area**
Install moveable chairs to provide a place to relax and socialize.
- 5 Resolve drainage issues**
Rainwater and runoff causes ponding in the park. Evaluate drainage improvement options through the engineering and design process.
- 6 Relocate park sign and remove invasives**
The park sign is hidden and not near the most used entrance to the park. Remove barberry bushes and place an updated park sign where the barberry bushes are currently located to provide a clearer entrance to the park.
- 7 Cover utility box with mylar patterned cover**
Cover the existing green utility box with a natural-looking patterned wrap, similar to the traffic control box wraps project conducted throughout the City in 2015 and 2016.
- 8 Remove invasive species, preserve native plants, and develop a planting plan**
Develop and implement a plan to remove invasive species, such as barberry bushes, throughout the park. Develop a planting plan for the park identifying and preserving native plants as well as adding new plants.



Recommendations and Rankings				
#	Recommendation	Dept. Lead	Priority	Cost
1	Light fixtures	RPCA	Medium	\$16,400 - \$22,040
2	Walking path	RPCA	Medium	\$26,880 - \$36,124
3	Native plant/pollinator garden	RPCA	Low	\$3,200 - \$4,301
4	Seating area	RPCA	Medium	\$5,600 - \$7,526
5	Drainage	RPCA	Medium	\$24,000 - \$32,254
6	Park sign	RPCA	Medium	\$1,800 - \$2,419
7	Utility box	RPCA	Low	\$700 - \$941
8	Invasive species removal, native plant preservation, and develop planting plan	RPCA	High	\$3,600 - \$4,838