

# Pendleton Park

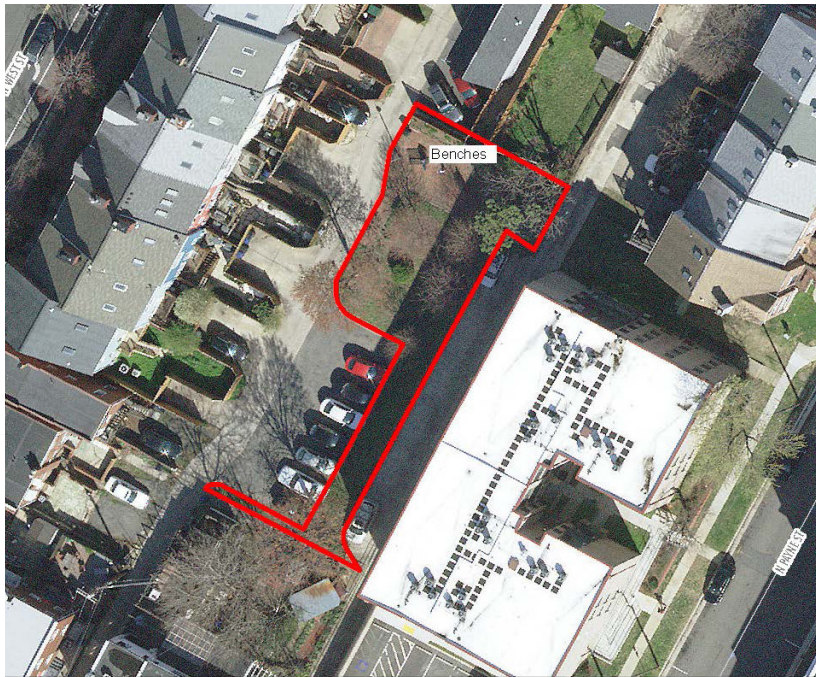
## History and Character

Pendleton Park is located at 1320 Wythe Street in the West Old Town neighborhood. There are no documented historic sites within the park.

The 0.38 acre park features passive area with shade and seating. The park is located in the middle of a block, with four alleyways leading up to the park. The park is surrounded by town homes and parking spaces. The alleyways from Interior Park lead to Pendleton Park. There is no official signage for the park from the street.



## Existing Conditions Map



# Pendleton Park

Which of the following existing park elements would you like to preserve, enhance, or transform?

Element	Landscaping		Element	Paths	
Number of responses	8		Number of responses	8	
Value	Count	Percent	Value	Count	Percent
Preserve it	1	13	Preserve it	3	37
Enhance it	4	50	Enhance it	0	0
Transform it	3	37	Transform it	5	63

Element	Benches	
Number of responses	8	
Value	Count	Percent
Preserve it	4	50
Enhance it	1	13
Transform it	3	37

What is currently NOT in the park that you would like to see there?

1. It doesn't feel like a park at all. But it could be really cool and a useful thing for the neighborhood!
2. Walking space example a lap walking track
3. Flowers and shrubs to attract bees and birds
4. Focal element to give the park a distinct identity vs just being left over space. I cannot do the drag and drop for question 7 but my two answer would be: --Help reduce environmental impacts from urban surroundings --Be a place to create social connections with neighbors

## Community Feedback

In Fall 2018, staff collected community feedback to understand how the park is used and how it could be improved in the future. The following information summarizes what we heard through an online survey and community workshop. Over 400 people responded to the survey in total, 16 of which were specific to Pendleton Park. Staff used the collected information to develop the draft park plans.

## In 10 years, I would like this Park to...

(Top 3 rankings shown, based on a weighted score)

1. *Help reduce environmental impacts from urban surroundings*
2. *Be a place to relax*
3. *Be a safe place for children to explore*



*The image above is an example of a pollinator garden. Pollinator gardens are planted predominately with flowers that provide nectar or pollen. Pollinator gardens support and maintain native pollinators (birds, bees, bugs, and bats) by supplying food in the form of pollen and nectar that ensure these pollinators stay in the area.*



# Pendleton Park

Which of the following existing proposed park elements do you love, like, or not like?					
Recommendation Park welcome sign			Recommendation Green systems		
Number of responses 18			Number of responses 18		
Value	Count	Percent	Value	Count	Percent
I love it!	6	33	I love it!	14	78
I like it	10	56	I like it	3	17
I don't like it	2	11	I don't like it	1	6

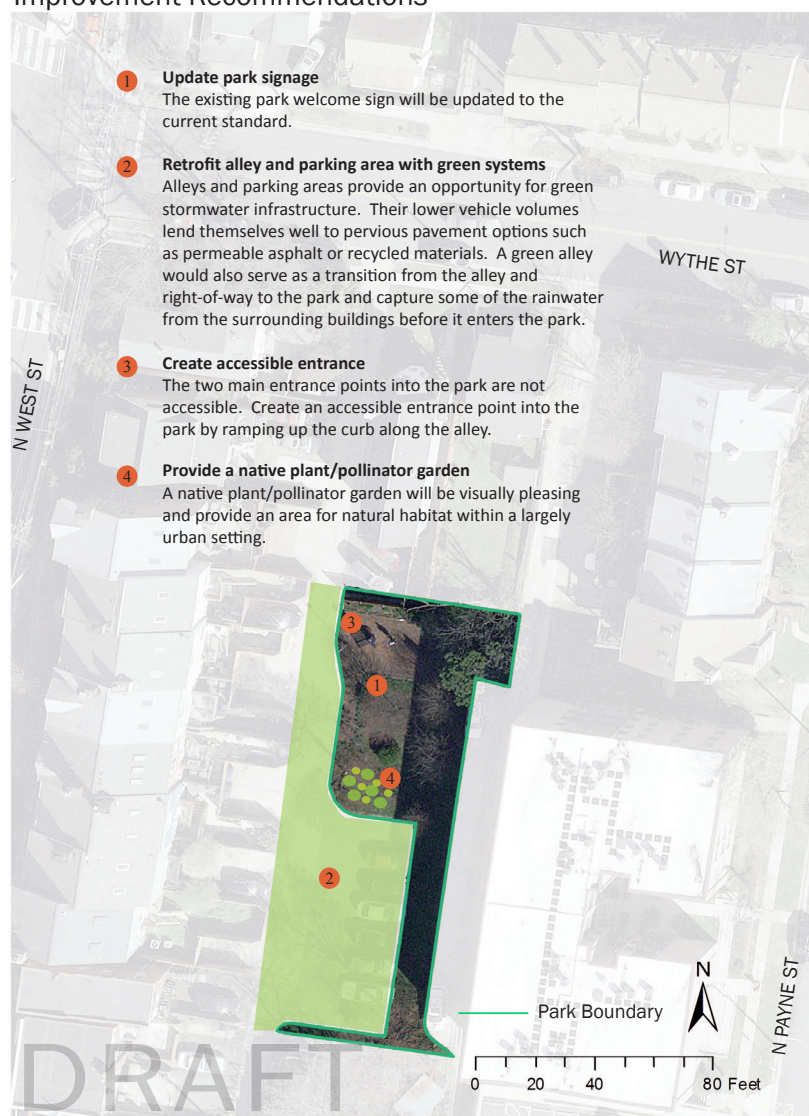
  

Recommendation Entrance			Recommendation Native plants		
Number of responses 18			Number of responses 18		
Value	Count	Percent	Value	Count	Percent
I love it!	7	39	I love it!	13	72
I like it	8	44	I like it	4	22
I don't like it	3	17	I don't like it	1	6

In the summer of 2019 RPCA staff collected community feedback on the draft recommendations for improving this pocket park. The following information summarizes what was heard through online surveys and community feedback (see appendix for full results). Over 700 responses were collected in total, 18 of which were specific to Pendleton Park.

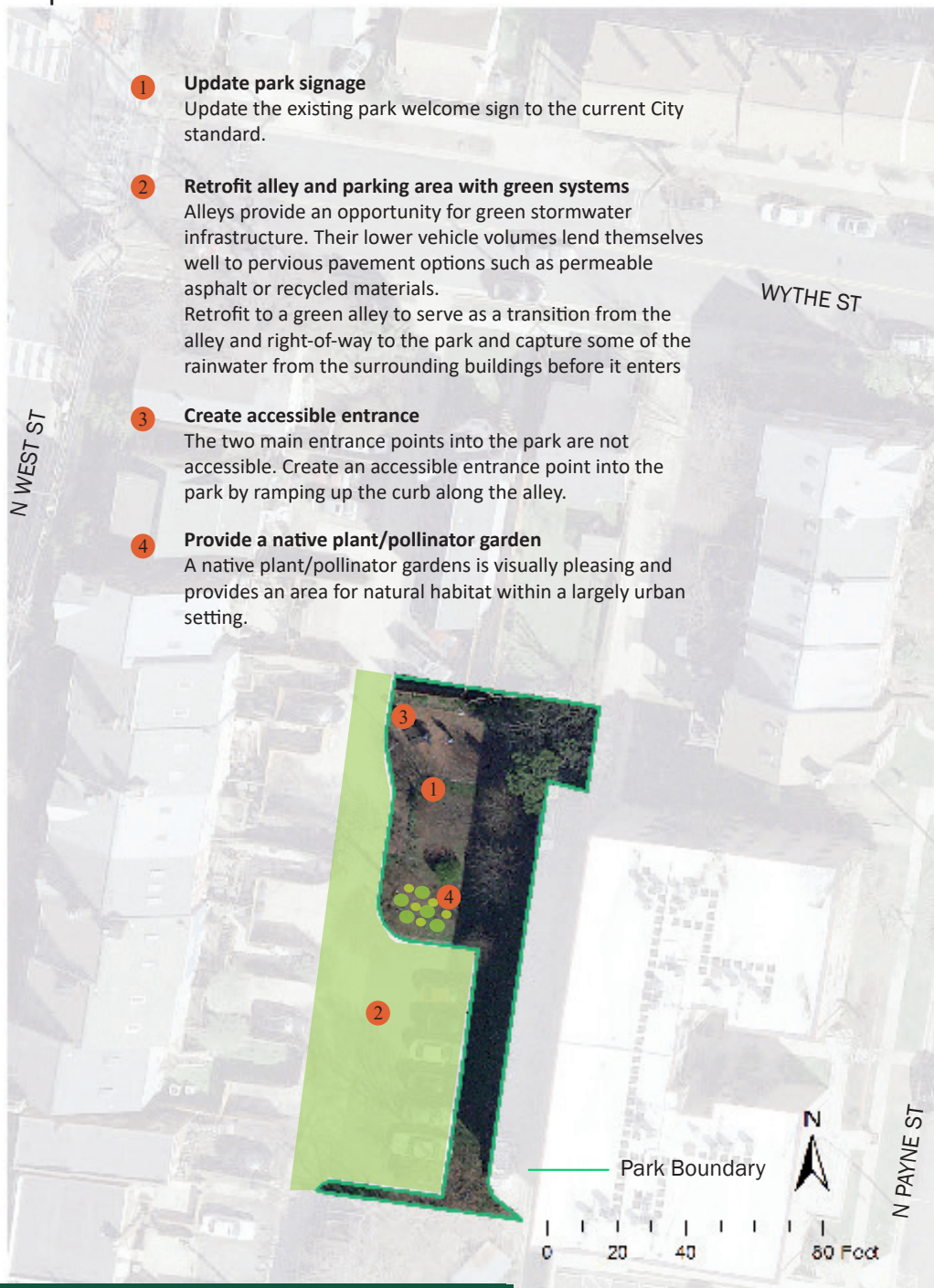
Based on information from the summer input phase, staff updated the plan to best represent current and future community needs. No major changes were made to the original draft plan.

## Improvement Recommendations



# Pendleton Park

## Improvement Recommendations



Recommendations and Rankings

#	Recommendation	Dept. Lead	Priority	Cost
1	Park signage	RPCA	Medium	\$1,800 - \$2,419
2	Retrofit alley and green systems	RPCA/TES	Low	\$69,000 - \$97,730
3	Accessible entrance	RPCA	High	\$4,900 - \$6,585
4	Native plant/pollinator garden	RPCA	Medium	\$3,500 - \$4,704