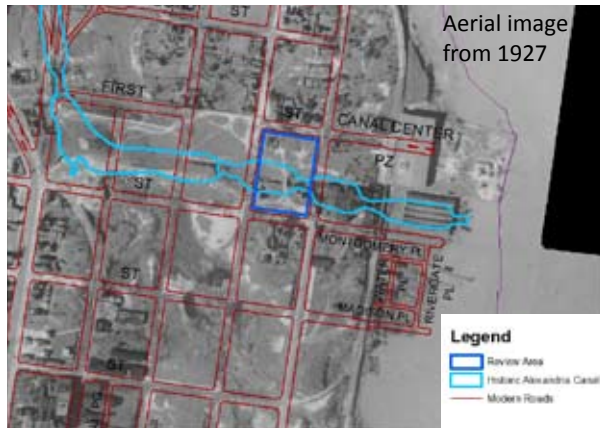


Montgomery Park

History and Character

Montgomery Park is 2-acre square block park in Old Town North. The site was part of John Alexander's 6,000 acre plat purchased in 1669. The Alexandria Canal ran through the square block and a lock and pool are located under the park (image below). The canal was in operation from 1845-1886 and connected Alexandria



with the Chesapeake and Ohio Canal at Georgetown. Stretching 7 miles, the canal crossed the Potomac on a 1,000-foot aqueduct bridge and at ground level from Alexandria to Rosslyn. The walls of the canal were made of Aquia Freestone with natural cement mortar and the floor lined with wood planking. Each lock was made of wooden timbers with iron fittings and iron wicket gates at the bottom. The locks would have been poled or towed by hand as no evidence of a mule path was found during excavation of Lock 1 and Pool 1 by Alexandria Archaeology and contracted archaeologists from the late 1970s through the mid-1980s. Large amounts of glass debris were found during excavations. The canal must have been used as a dumping ground, particularly from a glass factory that was located along North Fairfax Street from 1898 to 1927. Archaeological features and materials similar to those at the base of the canal would probably also be found at Montgomery Park.

By 1939, the site was one square block property. Tennis courts were installed in the park along Montgomery Street by 1977, though the rest of the park remained cleared open space until the playground and dog park were added between 1998 and 2002.

Today, the four lit tennis courts are the most popular in the City. There are frequent tennis meet-up groups and lessons throughout the week. Because there is still a canal running underneath the park, the courts frequently crack. Most recently, they were renovated in 2008 and had crack repairs after the earthquake in 2011.

The playground is used throughout the day, but its peak is weekday mornings and afternoons when St. Anthony's School uses the site. The playground is over 10 years old and the equipment is starting to reach the end of its useful life. The playground lacks shade. There are two entrances into the playground, but only one from a paved pathway. This is the only public playground within a 0.75-mile radius in a densely populated area of Old Town.

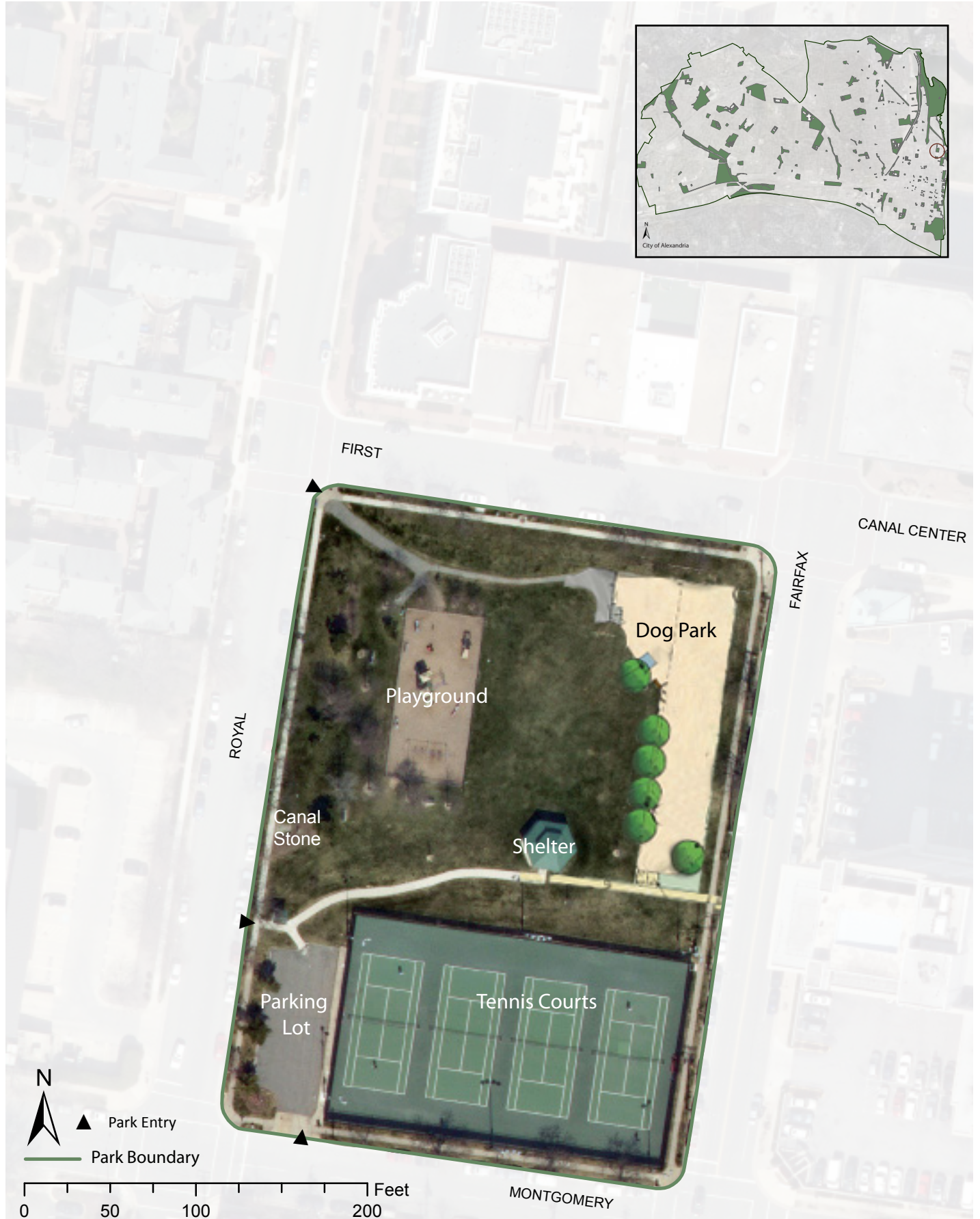
As recommended in the City's Dog Park Master Plan (2000), the dog park was enlarged in 2013 through development contributions. Benches, pathways and trees were also added to the site. The dog park is the only fenced dog area in Old Town.

The park also has a gazebo with electrical outlets, picnic tables and an open lawn. The turf itself is not in good condition and the gazebo does not attract a variety of uses, though it has the potential to be used more often for events and programs. In recent years a yoga group has used the space on weekends.

While there are pathways to each of the park features, the parkways do not connect, limiting circulation and multiple uses throughout the site. There are a number of retail establishments surrounding the park, including a sandwich and coffee shop, that could encourage great use of the site for picnicking and socializing.



Existing Conditions



Community Feedback

In Fall 2014, staff collected community feedback to understand how the Park is used and how it could be improved in the future. The following information summarizes what we heard through an online survey, community workshop, and “graffiti board” in the park. Over 270 people responded to the survey in total, forty-two of which were specific to Montgomery Park. Staff used the collected information to develop draft park plans.

What would you like done with the dog park?

Value	Count	Percent
Preserve it as is	28	80%
Enhance it	4	11%
Transform it	3	9%

Explain

Add trees.
Bigger and better
Ensure dogs cannot bite children; I've seen unleashed dogs chasing kids
The recent renovations are impressive.
Too big. Cuts out grass space
Unnecessarily enlarged and expanded.

What would you like done with the open lawn?

Value	Count	Percent
Preserve it as is	22	61%
Enhance it	12	33%
Transform it	2	6%

Explain

Claim some of this area for an expanded playground.
More frequently perform maintenance (e.g., mow).
More trees, etc. would be nice
No one uses it. Make it a flower garden maybe.
Open lawn space is great, please enhance.
Reduce the dog park!
The neighborhood benefits from wide open space for kids to run.
Open lawn is fine as is

What would you like done with the park shelter?

Value	Count	Percent
Preserve it as is	21	60%
Enhance it	10	29%
Transform it	4	11%

Explain

I would like to use the park shelter, but it is almost always occupied by a group of (possibly homeless/transient) men. They leave a lot of trash and curse in front of kids. I do not feel safe there. (x4)
Add a public bathroom

I never see anyone using this space. Could be transformed into a water feature/spray ground.
Serviceable water fountains
Would be nice to expand or have more tables

What would you like done with the parking?

Value	Count	Percent
Preserve it as is	22	69%
Enhance it	5	16%
Transform it	5	16%

Explain

Parking can be challenging at times since Fairfax has old style meters.
Paid parking is horrible; need more free parking.
Unpaid/free spots next to courts
The parking spaces seem to be underutilized and could be transformed to provide additional amenities to park goers.
No problem with parking but it is extremely hazardous to cross First St adjacent to N Royal since the Royal St traffic does not have a stop sign. Please work with Transportation to slow down or have a T intersection for cars to stop. Very dangerous as lots of people with dogs and kids walk to this park.

In 10 years I would like this Park to...

(Top 3 rankings shown; based on a weighted score)

1. Be safe place for children to explore
2. Be a place to create social connections with neighbors
3. Be a place to relax

What would you like done with the playground?

Value	Count	Percent
Preserve it as is	5	14%
Enhance it	26	70%
Transform it	6	16%

Explain

Add more elements
Greatly expand this area. Use rubber flooring. More challenging climbing structures.
More features (e.g. climbing structures and swings) for kids younger than 2 (x3)
More modern playground equipment. Lots outdated (x6)
My recollection is that the playground is fairly exposed to the sun. Add more shade/trees around playground (x2)
Would be great to have a shaded play and sitting area
It'd be good to see a swing added that can accommodate children with disabilities such as the one at Lyles-Crouch.
Kids love the playground; most important part! It's great for families; keep the fence for safety.
It would be great if you could replace the woodchips with the special turf used at other parks. (The kind that has some give in it and feels a bit bouncy).
The playground is very well-loved but offers little to do for the smaller kids so a separate area without mulch and more toddler level equipment would be great. Also more innovative equipment for the bigger kids. Maybe add a maze like the one at the new Potomac Yard park.
Replace mulch with rubber flooring, add a sandbox and more benches!
It is heavily used and it would be great to see it enlarged and with additional play structures.
Also would like to see improved soft ground surface.

What would you like done with the seating?

Value	Count	Percent
Preserve it as is	15	44%
Enhance it	18	53%
Transform it	1	3%

Explain

Add more benches within fenced playground area.
Add picnic tables and benches in shady areas where trees are.
Additional seating would be nice.
More benches at the playground and along the perimeter of the grass

What would you like done with the tennis courts?

Value	Count	Percent
Preserve it as is	30	94%
Enhance it	0	0%
Transform it	2	6%

Explain

It's great to have them on the occasions my kids want to play. I think they're in good shape.
More grass!
not always being used

What is currently NOT in the Park that you would like to see there?

Response

Bathrooms.
Better playground surface. The bark isn't good for small children.
Free parking next to tennis courts; bathroom facility
Good toilet facilities
I like it the way it is with the nice playground for kids.
More flowers.
More shaded areas.
Rubber on playground not mulch so babies can crawl without eating mulch
Shade covering for hot summer days and winter snow.
Toddler friendly equipment in a non-mulched area. Larger play area overall.
Young children specific areas
A spray ground for kids and a sandbox in the playground. Also, more trees along the fenced in playground to provide more shade during the warmer months. More benches within fenced area of playground for parents/caregivers.
As previously mentioned, a swing or other item for children with disabilities so they too can enjoy the park. A nicer pavilion.

Is there anything else you would like to tell us about the Park?

Response

Do not want to attract more homeless or questionable people who might hurt the children. It is a nice park and is kept well groomed by city workers and the neighborhood. It's great to have open space in the neighborhood. Keep the flat green space in the park. Great for tossing a frisbee or baseball. More shade. My family loves this park, and we thank you for all you do to take care of it! Too much emphasis on dog area. Improved access for all pedestrians. We visit the park nearly each day given our child is in school nearby. It is used by many folks during the week and it'd be great to see it used more on the weekends. It's great that this park serves so many diverse groups in the North Old Town area. I especially like that local schools make use of it during the week, while local residents use it actively on weekends.

How do you get to this Park?

Value	Count	Percent
Walk	29	69%
Bike (personal)	0	0%
Bike (Capital Bikeshare)	0	0%
Drive	12	29%
Public Transit	1	2%
Carpool	0	0%

How far do you typically travel to visit this park?

Value	Count	Percent
Less than 1/2 mile	21	50%
Between 1/2 mile to 1 mile	9	21%
Between 1-2 miles	5	12%
Over 2 miles	7	17%

Have any of the following circumstances prevented you from visiting this Park? (check all that apply)

Value	Count	Percent
I am physically limited from walking	0	0%
There is no pedestrian/bike friendly access to the park from where I live	2	15%
I have concerns about crime or personal safety	5	39%
There is not enough parking	6	46%
There is nothing in the Park that interests me	0	0%

How often do you visit this park?

Value	Count	Percent
Daily	25	60%
Weekly	12	29%
Monthly	4	10%
Yearly	1	2%

Graffiti Sign

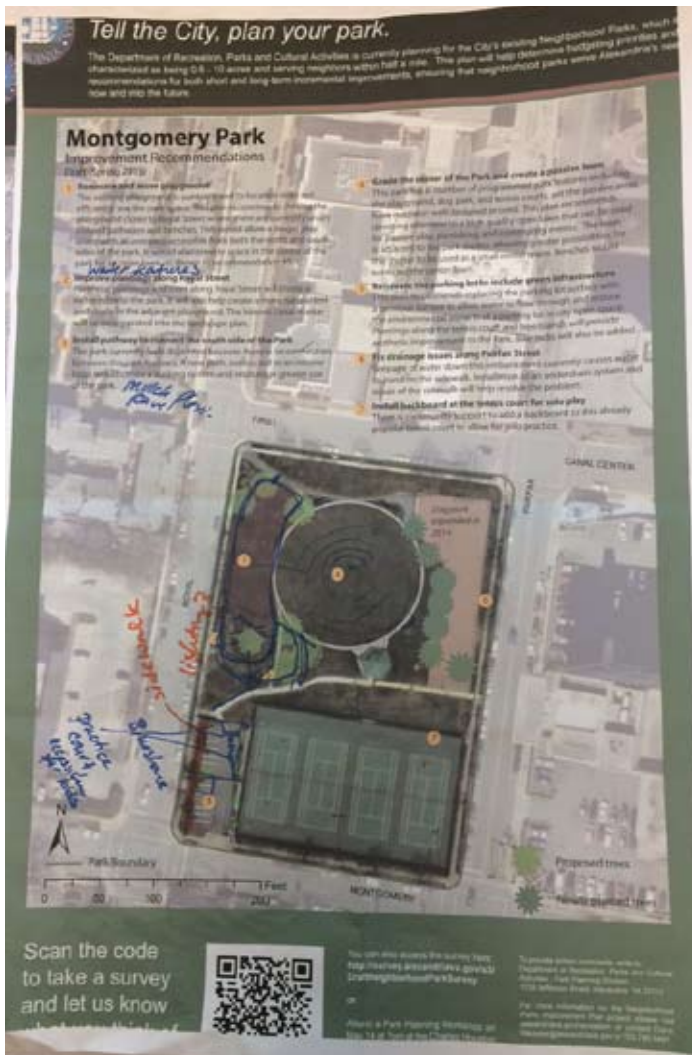
A "graffiti sign" in the Park had a marker attached and asked park users to write down what they would like their park to look like in the future. The sign was on site from September to November 2014. Comments included:

- Add a water fountain
- Tennis practice wall (x2)
- Swimming pool (x4)
- Fenced off area at dog park for small dogs
- Dog waste bags in the dog park
- Slides



Draft Plan Feedback

In Spring 2015, the community provided feedback on the draft park plan (below) through online surveys (see appendix for full results), park signs and public meetings (comments on the plan shown below). Staff also met with parents and administration from St. Anthony's School. Based on information from the Spring input phase, staff updated the plans to best represent current and future community needs.



In October 2015, Staff presented the Draft Neighborhood Parks Improvement Plan to the Park and Recreation Commission (PRC). Following the public comment period, which included concerns on the Montgomery Park Plan, the PRC asked staff to hold another community meeting. A meeting was held on November 17, 2015 at 8am at the park. Approximately 10-15 people, representing neighbors, St. Anthony's parents, local businesses, and tennis players. Meeting attendees raised the following concerns:

- Moving the playground closer to Royal may expose children to fumes from vehicles and foul language used on the adjacent sidewalk. May also invite strangers into the playground. A more open lawn adjacent to the playground may mean balls from sports use could fly into the playground.

- There is concern about what can be planted given the soil conditions.
- The recommendations, particularly the contentious ones, are a very high cost
- Moving the backboard out of the tennis court increases cost and removes parking. Increased development in the surrounding area will put added parking needs in the neighborhood.
- Not enough landscape and shade shown, the center oval does not meet this need.

The attendees reached consensus on making the following changes to the plan, as reflected in the recommendations.

- Clarify the text on tree locations
- Add lighting to the park
- Allow space for a farmers market/programmed activity in the parking lot
- Remove parking meters and replace with 2-3 hour limit parking
- Instead of showing the looped walkway, recommend a landscape plan that preserves an open lawn, planting beds, benches, shade, and a meandering path to connect north and south. The planting beds may provide an opportunity for stormwater capture.
- Emphasize the importance of beautification of the park and the related need for trees and other plantings that enhance what's there today.
- The water feature proposed within the playground may extend beyond the playground boundary and into the landscaped area (may be a multi-purpose water feature).
- Ensure the playground serves all ages and has shade. This may mean shade structure canopies until new trees mature.

- Revise the playground location on the plan to more accurately depict that the boundary would be at the top of the slope.
- Add a backboard to an existing court to allow for solo play with regulations that matches override solo practice. If the backboard becomes an issue, further explore other options.

Implementation Strategy

This plan uses citizen input and considers other external considerations to determine how to address park improvements incrementally over time. Most of the recommendations in the plan can be implemented independent of other projects as funding is available, whether through city or non-city funds. The cost estimates (in 2015 dollars) do not include operating costs. Prior to the implementation of any recommendation, operating costs, if any, must be considered.

The priority for each recommendation is shown as “low,” “medium,” or “high.” RPCA determined these rankings based upon (1) park user safety, (2) community prioritization feedback and the results of the 2011 and 2013 Parks and Recreation Needs Assessment, (3) life span of the existing conditions, (4) potential for non-city funding sources, (5) level of user impact, (6) relationship to other projects.

The Old Town North (OTN) Small Area Planning process began the same week as the final Montgomery Park community meeting. During the OTN plan process, staff conveyed that the concept plan for Montgomery Park is flexible. The community views Montgomery Park as a hub/node for the planning area, and if necessary, can bring the park plan back to update as the vision for OTN evolves and is implemented.

Montgomery Park					
#	Recommendation	Priority	Estimated Cost	Associated Recommendations	Dept Lead
1	Renovate, expand, and reconfigure the playground	Medium	500,000-800,000	Should be constructed at same time as passive lawn (recommendation #6 & 7). Cost will depend upon stormwater management needs.	RPCA
2	Improve plantings along Royal Street	Low	50,000-65,000	Should be constructed at same time as playground renovation (recommendation #1)	RPCA
3	Remove parking meters in the parking lot and replace them with 2-hour parking limit	Medium	N/A		TES
4	Renovate the parking lot and include green infrastructure	low	75,000-125,000		RPCA/TES
5	Fix drainage issues along Fairfax St	High	40,000 - 60,000		RPCA
6	Develop and Implement a detailed landscape plan for the passive use area in the center of the park	Medium	100,000 - 200,000	Should be constructed at same time as playground renovation (recommendation #1 & 6); range depends upon the extent of the water feature	RPCA
7	Add a backboard for solo play to tennis court	Medium	8,000 - 15,000	Cost depends upon need for stronger fence to withstand wind with backboard	RPCA

Improvement Recommendations

1 Renovate, expand, and reconfigure the playground

The existing playground is outdated and its location does not efficiently use the park space. This plan recommends shifting the playground closer to Royal Street where there are currently underutilized pathways and benches. This would allow a longer play space with an entrance accessible from both the north and south sides of the park. It would also provide space in the center of the park for a passive use lawn, as shown in recommendation #5. The playground design will incorporate the existing trees to provide shade. Additional shade on the east side of the playground may be accommodated by including shade canopies until new trees mature to the point of providing shade. A water feature may be added extend into the landscaped area outside the playground. The playground will be designed to have features for children of all ages.

2 Improve plantings along Royal Street

Perennial plantings and trees along Royal Street will create a softer edge to the park. It will also help create a more natural feel and shade in the adjacent playground. The historic canal marker will be incorporated into the landscape plan.

3 Remove parking meters in the parking lot and replace them with 2-hour parking limit

The parking lot is not as well used as it could be because it has parking meters while the adjacent streets do not and instead have 2 hour parking restrictions. It is currently the only parking lot within a park with meters. The parking lot may also be used on occasion for special events, such as a farmers market.

4 Renovate the parking lot and include green infrastructure

This plan recommends replacing half of the parking lot surface with a pervious surface to allow water to flow through and reduce the environmental impacts of a parking lot in city open space. Plantings along the tennis court and tree islands will provide aesthetic improvement to the Park. Bike racks will also be added.

5 Fix drainage issues along Fairfax St.

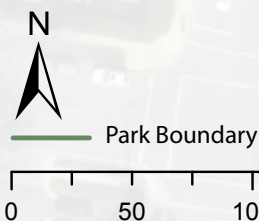
Seepage of water down this embankment currently causes water to pond on the sidewalk. Installation of an underdrain system and repair of the sidewalk will help resolve the problem.

6 Develop and implement a detailed landscape plan for the passive use area in the center of the park

This park has a number of programmed features including the playground, dog park, and tennis courts, yet the passive areas have not been well designed or used. This plan recommends devoting attention to a high quality passive use space that can be used for passive play, picnicking, and community events. The space will also include planting beds, benches, shade trees, and a meandering path to connect north and south. The landscape plan will emphasize the importance of beautification of the park and the related need for trees and other plantings that enhance what's there today. The planting beds may also provide an opportunity for stormwater capture or water feature. The water feature, to be designed as part of the landscape plan, may represent the historic canal that once ran through the park. The water feature proposed within the playground may extend beyond the playground boundary and into the landscaped area (may be a multi-purpose water feature). *(Note: all tree and pathways locations shown in the image below are conceptual only. A landscape plan will provide greater detail on location).*

7 Add a backboard for solo play to the tennis court fence

There is community support to add a backboard to this popular tennis court to allow for solo practice. To avoid use of the backboard from limiting full court use, regulations will be set in place to ensure that matches on the court override use of the backboard. *(Note: a previous version of the plan showed a separate court constructed in the parking lot for solo play. This idea was eliminated from the plan because it would potentially limit programmable space in the parking lot (farmer's market, etc.), reduce parking by 4-5 spaces, add additional chain link fence to the park, and have a high cost. If the backboard in the tennis court causes issue with full court use, other backboard locations may be further examined).*



2015 Neighborhood Parks Improvement Plan: Appendix



Neighborhood Parks Plan

Lockett Field/ Schuyler Hamilton Skate Park

Community Feedback, Fall 2014



The Division of Park Planning, Design, and Capital Development is currently planning for the City's existing Neighborhood Parks, which we characterize as being 0.5 - 10 acres with a service area of up to 0.5 miles. The results of this plan will help determine budgeting priorities and recommendations for both short and long-term incremental improvements, ensuring that neighborhood parks serve Alexandria's needs now and into the future.

In Fall 2014, Staff collected community feedback to understand how the Park is used and how it could be improved in the future. The following information summarizes what we heard through an online survey, community workshop, and "graffiti board" in the park. Over 270 people responded to the survey in total, fourteen of which were specific to Lockett Field/Schuyler Hamilton Skate Park.

In 10 years I would like this Park to...

(top 3 rankings shown; based on a weighted score)

1. Be a safe place for children to explore
2. Provide organized recreational opportunities
3. Have lots of activity

What would you like done with the skate park?

Value	Count	Percent
Preserve it as is	4	57%
Enhance it	3	43%
Transform it	0	0%

Explain

There is always a lot of trash in the park. It needs to be picked up every morning when it opens
Add to the park

What would you like done with the ballfield?

Value	Count	Percent
Preserve it as is	1	11%
Enhance it	6	67%
Transform it	2	22%

Explain

Batting cages.
Make it accessible without a permit.
Please consider creating a useful baseball facility here with turf entire facility. Add batting cages. make it a multi-purpose facility. add bathroom facility/Jiffy John.
This field is bigger than it needs to be for its typical uses--youth baseball/softball and adult softball. It could be transformed, along with changes to parking, into two fields--a 60' field with a mound and a softball/multi-use field. The city needs additional 60' fields with mounds, cages, and bullpens.
Playground and open space. Not useable by younger kids and more people seem to go to the baseball field near Monroe Ave

The field should be transformed into a multi-purpose facility that can be used for Little League Baseball, 50-70 baseball, softball, tee ball, coach pitch baseball and other rec. sports

What would you like done with the parking lot?

Value	Count	Percent
Preserve it as is	3	43%
Enhance it	2	29%
Transform it	2	29%

Explain

Could use an upgrade.

What would you like done with the seating?

Value	Count	Percent
Preserve it as is	1	14%
Enhance it	5	71%
Transform it	1	14%

Explain

Could use another bench inside the skatepark area.

How do you get to this Park?

Value	Count	Percent
Walk	2	15%
Bike (personal)	0	0%
Bike (Capital Bikeshare)	0	0%
Drive	11	85%
Public Transit	0	0%
Carpool	0	0%

How far do you typically travel to visit this park?

Value	Count	Percent
Less than ½ mile	1	8%
Between ½ mile to 1 mile	3	23%
Between 1-2 miles	5	39%
Over 2 miles	4	31%

Have any of the following circumstances prevented you from visiting this Park? (check all that apply)

Value	Count	Percent
I am physically limited from walking	2	40%
There is no pedestrian/bike friendly access to the park from where I live	2	40%
I have concerns about crime or personal safety	0	0%
There is not enough parking	0	0%
There is nothing in the Park that interests me	2	40%

How often do you visit this park?

Value	Count	Percent
Daily	0	0%
Weekly	5	39%
Monthly	6	46%
Yearly	2	15%

Is there anything else you would like to tell us about the Park?

Response

It needs more shade

The dugouts that were added are a welcome addition. Thank you. The grounds around the ball field need work, it's dangerous for little kids -- wooded area drops off and there's frequently marshy conditions. Overall, grounds are uneven, lots of flooding and pooling water.

It has lights which are at a premium on fields in Alexandria. The field should be transformed into a multi-purpose facility that can be used for Little League Baseball, 50-70 baseball, softball, tee ball, coach pitch baseball and other rec. sports. The entire facility should have field turf installed to cut down on rain outs and maintenance issues. With field turf this could be one of the premier multi-purpose fields in the City.

What is currently NOT in the Park that you would like to see there?

Response

Batting cages

Better ballfield

Open space!

Toddler/younger kids playground

more ramps or added structures for skateboarding

mound on ball field; batting cages; bullpen

Unstructured play by children of all ages. The city fails to provide baseball fields that can be accessed by the public. We need places for kids, including teens, to play baseball without coaches and parents supervising their every move.

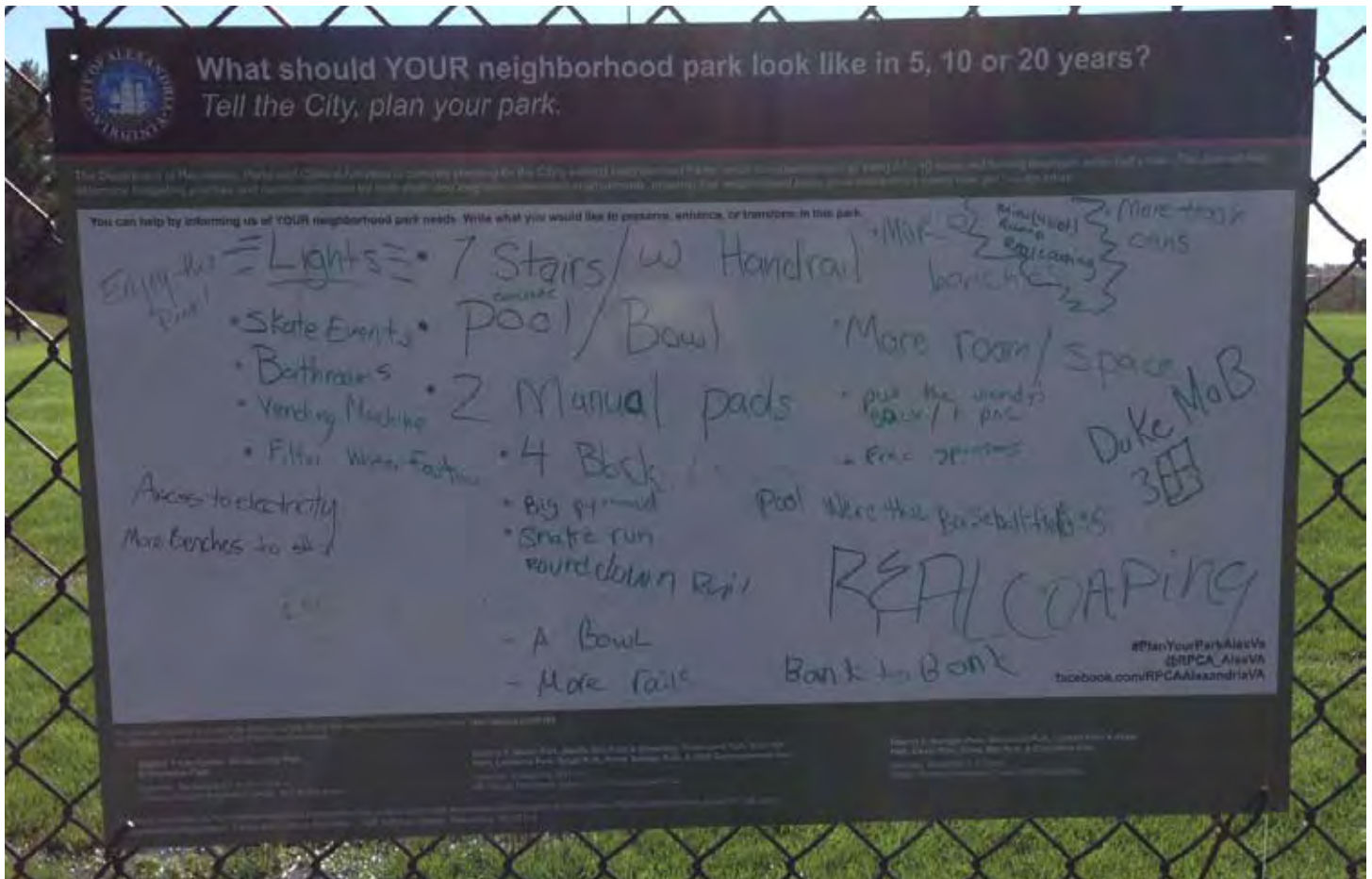
Batting Cages. Access to bathroom facility. The field does not drain well and is unplayable after a little bit of rain. Turf field would be fantastic - just played on one in DC yesterday, and the boys loved it.

The skate park is nice and has nice landscaping around it but there is always a lot of trash in the morning when we like to visit and it is less crowded.

There should be bathrooms, The back stop needs to be modified to stop foul balls being lost in the woods. The field does not drain. After a rain event it takes days for the field to dry out

Graffiti Sign

A "graffiti sign" in the Park had a marker attached and asked park users to write down what they would like their park to look like in the future. The sign was on site from September to November 2014 (image from October 27).





Lockett Ballfield & Schuyler Hamilton Jones Skate Park

Improvement Recommendations

Draft (Spring 2015)

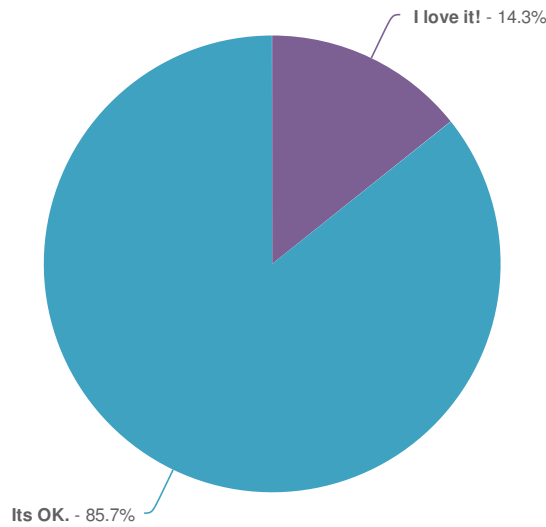
- 1 Route a bike path through the parking lot to Quaker Lane**
 The existing bike route from the city's east to west goes from Colvin St. up to Duke St. and down Wheeler Ave. By installing a bike path through the City-owned parking lot and parcel south of the ballfield, cyclists would be able to avoid the busy and dangerous section of Duke St.
- 2 Extend pathway and provide ADA access to dugouts and seating**
 There are currently no paths connecting the dugouts, bleachers and ballfield entrance. A new path will connect these features and be accessible from the parking lot.
- 3 Upgrade ballfield facilities**
 This ballfield needs upgraded dugouts, first base field access, bleachers, and a press box. There is also space to build batting cages to help meet a citywide need for this recreational feature.
- 4 Re-grade the ballfield and improve drainage**
 Following rain events there is often standing water in the outfield due to poor drainage. With standing water, games and practices are forced to be canceled. Re-grading the field and improving drainage will greatly improve the maintenance and usage of the park.
- 5 Replace the modular skate park features with a concrete design**
 The skate park was built in 2002 with modular features. These features have a life span of 15-20 years and will need replacement in the upcoming years. This plan recommends replacing the site with a the new industry standard of a concrete skate park, as shown in the image below. While more expensive to construct, concrete requires less maintenance and replacement overtime and is preferred by skate boarders. Concrete provides smoother and safer surfaces, seamless transitions, and design flexibility. The current site is 12,000 sq. ft. and there is room to expand up to 18,000 sq. ft.
- 6 Install new pathway from the east corner of the Park**
 Many skateboarders take the Duke St. bus to the Park, using the bus stop on the corner of Duke St. and South Quaker Lane. Yet, the entrance to the park is on the West side. There is a clear desire line from this pathway to the Skate Park, indicating where a pathway is needed for easier access.
- 7 Improve Plantings along Duke Street**
 The original plan for the site in 2002 intended for the Photinia plantings to be maintained at a height of 3'-4' ft. in order to maintain visibility into the park. A new planting plan and maintenance will help improve the attractiveness and surveillance of the site from Duke St.





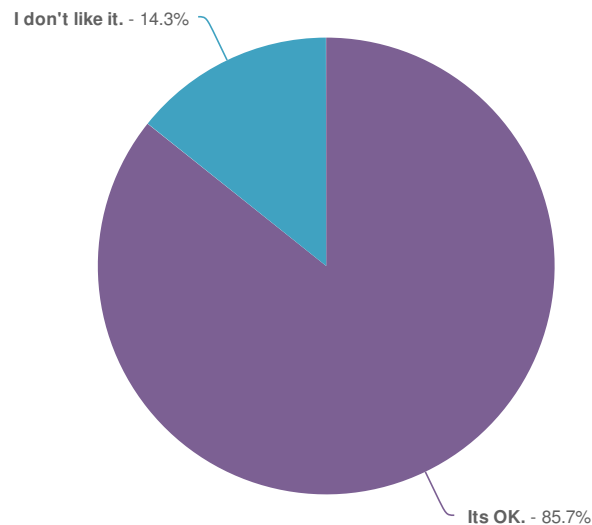
Luckett and Skate Park Draft Improvement Plan Survey Results, July 2015

What do you think of the following recommendations?-Extend pathway and provide ADA access to dugouts and seating



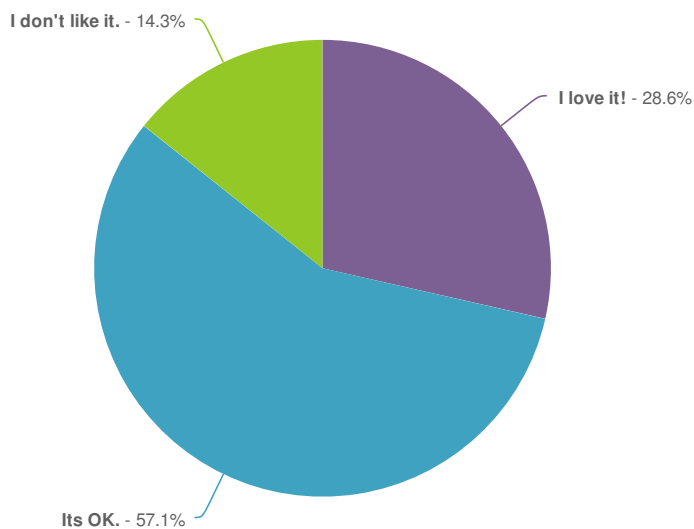
Value	Percent	Count
I love it!	14.3%	1
Its OK.	85.7%	6
Total		7

What do you think of the following recommendations?-Improve Plantings along Duke Street



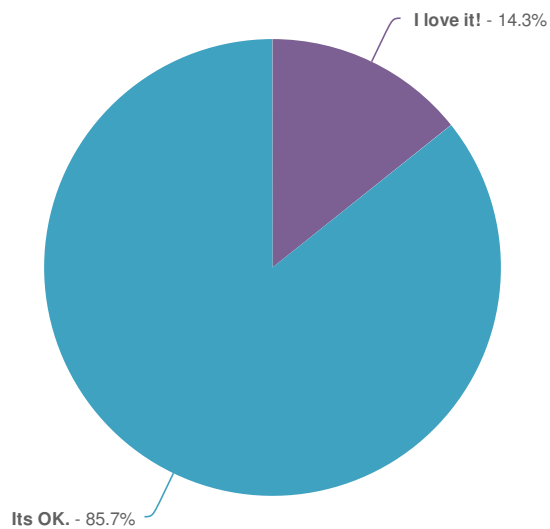
Value	Percent	Count
Its OK.	85.7%	6
I don't like it.	14.3%	1
Total		7

What do you think of the following recommendations?-Install new pathway from the east corner of the Park



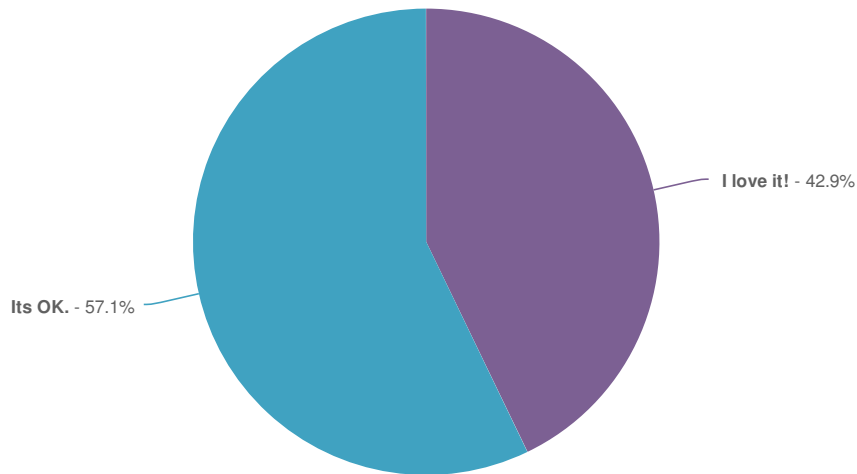
Value	Percent	Count
I love it!	28.6%	2
Its OK.	57.1%	4
I don't like it.	14.3%	1
Total		7

What do you think of the following recommendations?-Re-grade the ballfield and improve drainage



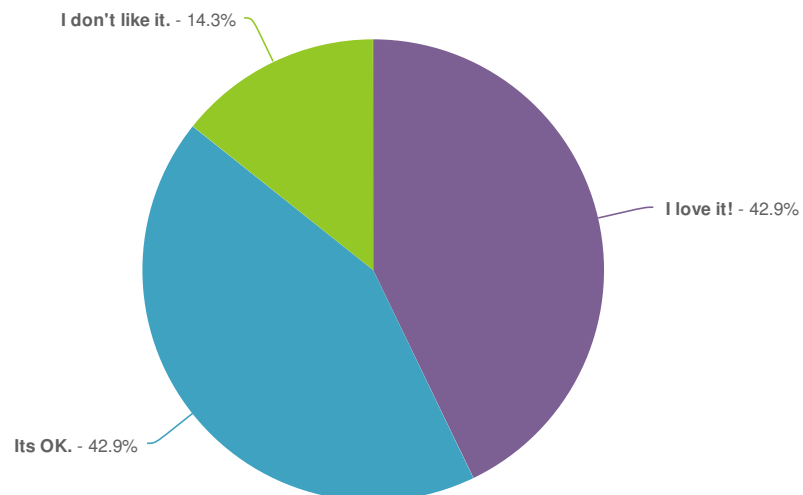
Value	Percent	Count
I love it!	14.3%	1
Its OK.	85.7%	6
Total		7

What do you think of the following recommendations?-Replace the modular skate park features with a concrete design



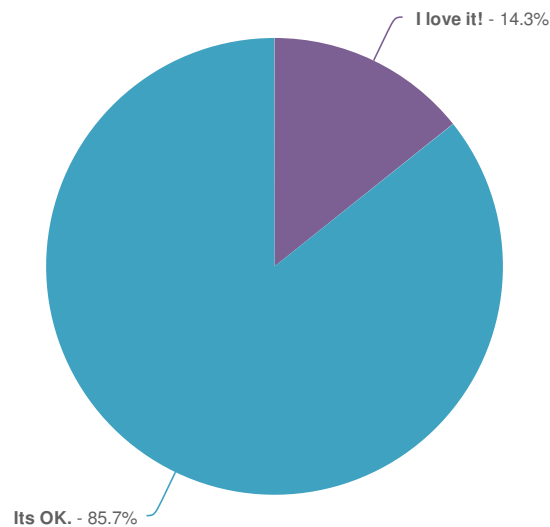
Value	Percent	Count
I love it!	42.9%	3
Its OK.	57.1%	4
Total		7

What do you think of the following recommendations?-Route a bike path through the parking lot to Quaker Lane



Value	Percent		Count
I love it!	42.9%		3
Its OK.	42.9%		3
I don't like it.	14.3%		1
Total			7

What do you think of the following recommendations?-Upgrade ballfield facilities

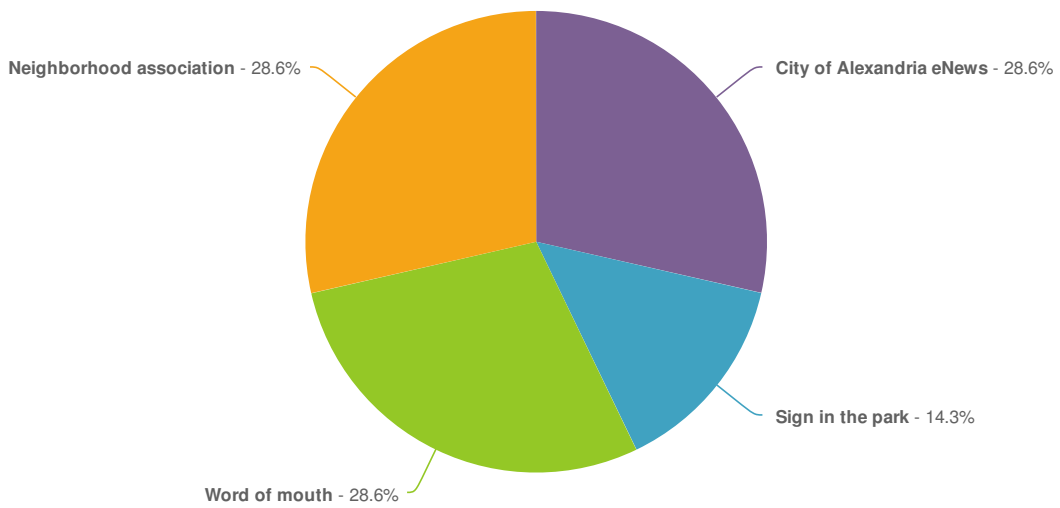


Value	Percent		Count
I love it!	14.3%		1
Its OK.	85.7%		6
Total			7

Do you feel all of the comments were heard and addressed in the draft Luckett Field/Skate Board Park plan? If not, what is missing and how can we make the plan better?

Count	Response
1	Yes
1	allow the skateboarders to have input in the skatepark design
1	The skatepark needs to have input from the local skateboarders who use the park every day. The new design needs to reflect the demand that is in place for skateboard parks of today, a balance between plaza/street skating and the other half of bowl/transition skateboarders. A true demographic study / poll should be done to which genre of skateboarding should be more focused on. i.e. who skates at the park the most, and what do they want to see done.
1	Yes everything has been heard but they do need to add a stair set , not too many bowls balance everything out

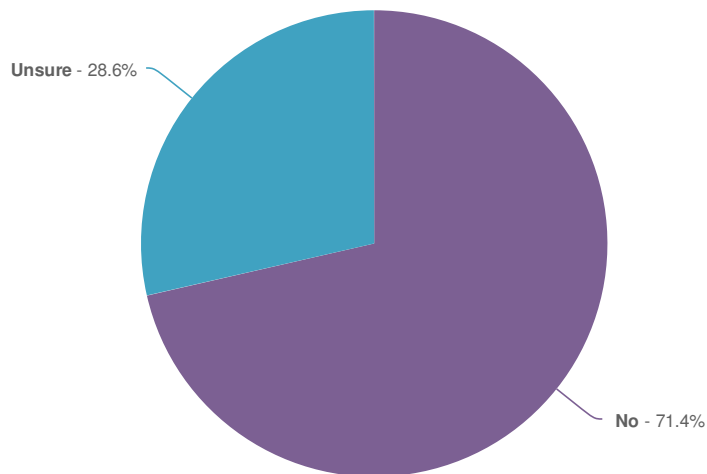
How did you learn about the Neighborhood Park Plan survey?



Value	Percent	Count
City of Alexandria eNews	28.6%	2
Sign in the park	14.3%	1
Word of mouth	28.6%	2
Neighborhood association	28.6%	2
Total		7

Responses "Other"	Count
Left Blank	7

Will you be attending the workshop on June 4 from 7pm-8:30pm at Patrick Henry Recreation Center to discuss the draft park plans?

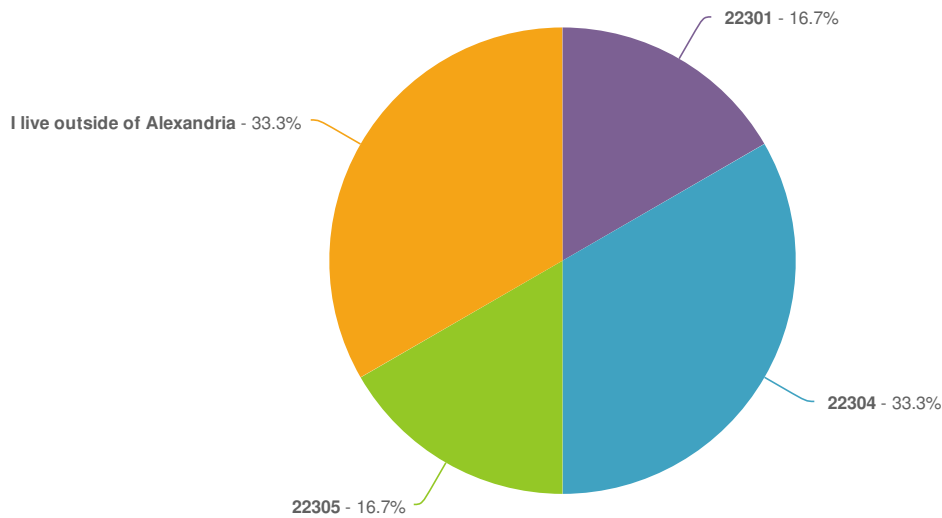


Value	Percent	Count
No	71.4%	5
Unsure	28.6%	2
Total		7

How many members of your household are in the following age groups?

	# in household	Responses
Under 5	4 100.0%	4
6-12	2 100.0%	2
13-18	3 100.0%	3
19-29	2 100.0%	2
30-49	6 100.0%	6
50-69	1 100.0%	1
70 or above	1 100.0%	1

What is your zip code?

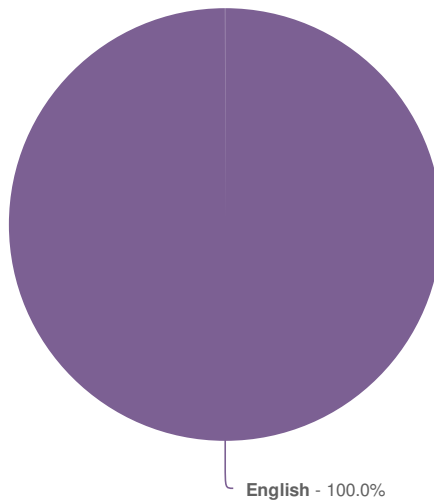


Value	Percent	Count	Statistics	
22301	16.7%	1	Sum	89,214.0
Total		6	Average	22,303.5

Value	Percent	Count	Statistics
22304	33.3%	2	StdDev 1.5
22305	16.7%	1	Max 22,305.0
I live outside of Alexandria	33.3%	2	
Total		6	

Responses "I live outside of Alexandria"	Count
Left Blank	7

What is the primary language spoken in your home?



Value	Percent	Count
English	100.0%	5
Total		5

Responses "other"	Count
Left Blank	7