

Chambliss Park

History and Character

Chambliss Park is an 8.08 acre park on the west end of Alexandria, adjacent to John Adams Elementary School and Dora Kelly Park. There are no known historical sites within the current park, however, there are two documented Civil War Era buildings to the south of the park, one of which may have been a stable.

Being in close proximity to Holmes Run (0.5 miles away on Civil War-Era map), the area would have been rich in game during prehistoric times. Native Americans likely would have used the area for hunting. As other hunting camps dating as far back as 10,000 years ago have been found in western Alexandria, there is the possibility archaeological evidence of hunting activities may be found within the park. This area of Alexandria was first settled by Europeans in the early 18th century and remained primarily agricultural until the early 20th century.



Today, the park is well used by the neighborhood as a place to walk dogs, play tennis, sled, and play baseball. It is also used by parents and students walking to John Adams Elementary School. The path from Chambliss street to the school is in poor condition and has a sharp corner that veers south and is hidden from view, raising a safety concern (below left). A dark pathway from private property (below right) connects to it.



There are two Resource Protection Areas (RPAs) in the park. RPAs are sensitive environmental corridors. The Commonwealth of Virginia requires that all City streams with perennial flow must be protected by a 100 foot Resource Protection Area buffer. This regulation was established after the City installed the tennis court in the park.

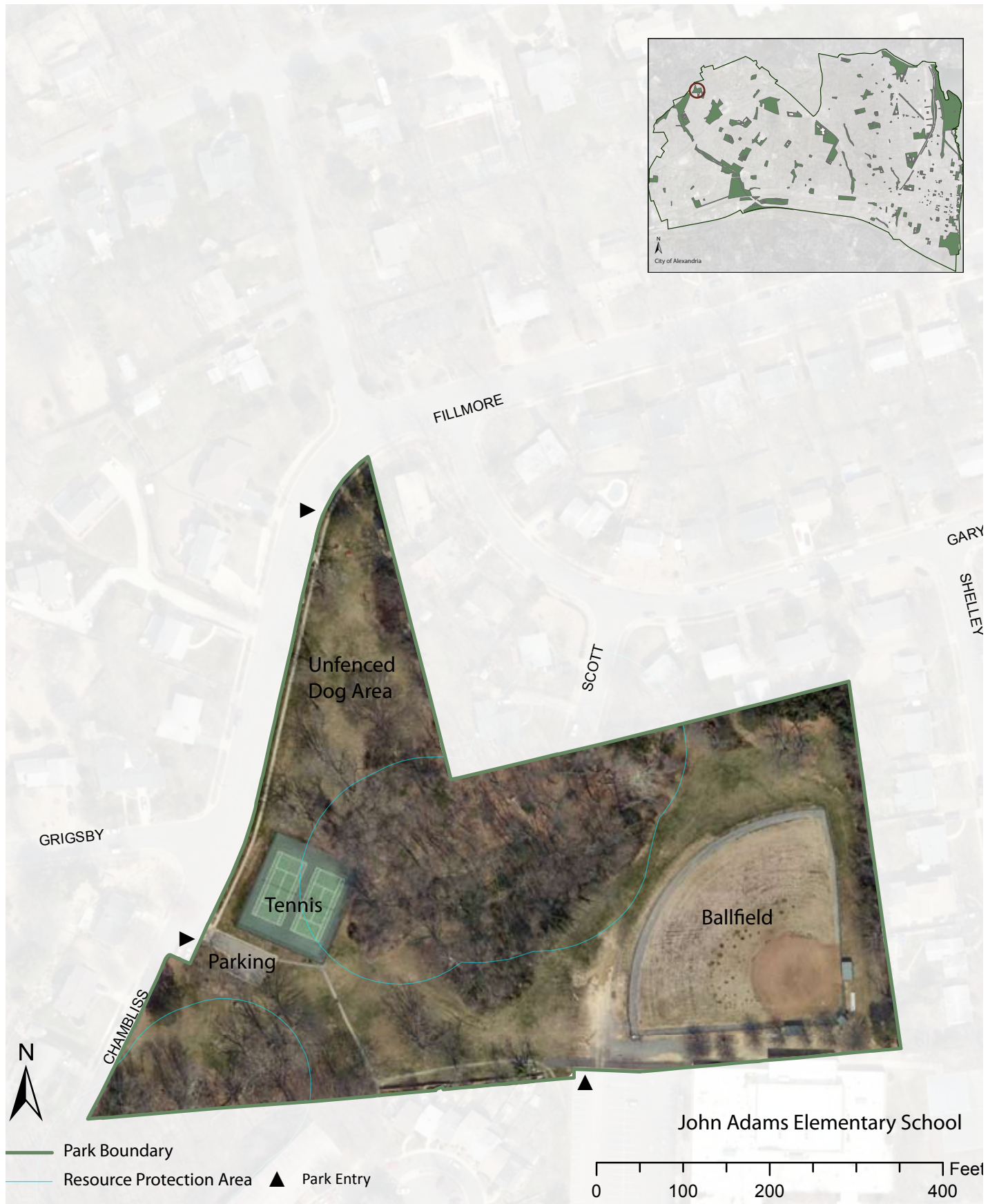
Much of the woodland is highly degraded with thick infestations of numerous species of non-native invasive plants. Nonetheless, small sections of relatively clean, intact woodland remain, including a remnant of Piedmont Acidic Oak - Hickory Forest on a southfacing knoll near N. Scott Street. A small, semi-open seep occurs at the northeastern edge of the woodland at the headwaters of the Chambliss tributary.

There is potential for increased use of the park when the Beauregard Small Area Plan is implemented and the site to the south (between Dora Kelley and John Adams Elementary School is re-developed). The site is slated to be mixed-use and residential.

John Adams Elementary School employees have used the area west of the baseball field (left) as an overflow parking area for the past few years. This is not a permitted use and has impeded upon the open space. A plan approved in Spring 2015 will expand the school's parking lot and restore this area of the park to open space.



Existing Conditions



Community Feedback

In Fall 2014, staff collected community feedback to understand how the park is used and how it could be improved in the future. The following information summarizes what we heard through an online survey, community workshop, and “graffiti board” in the park. Over 270 people responded to the survey in total, forty of which were specific to Chambliss Park. Staff used the collected information to develop draft park plans.

In 10 years I would like this Park to...

(Top 3 rankings shown; based on a weighted score)

1. Be a safe place for children to explore

2. Be a place to relax

3. Be a place to create social connections with neighbors

What would you like done with the ballfield?

Value	Count	Percent
Preserve it as is	15	47%
Enhance it	15	47%
Transform it	2	6%

Explain

Great exercise.
I do not like the fact that it is now locked and thus unavailable for general use.
Needs more frequent trash removal and maintenance.
No lights please!
The ballfield seems rarely used
Allow access
A lot more trashcans that actually get emptied and trash pickup on the grounds. Designated parking the doesn't interfere with the school pickup for after school programs

What would you like done with the natural area?

Value	Count	Percent
Preserve it as is	15	46%
Enhance it	15	46%
Transform it	3	9%

Explain

Beautify with landscaping and nice seating area. Nothing has been added to replace trees that have fallen.
Add paths for better access
Add picnic tables and water fountains.
I love natural settings.
Natural areas enhance the entire area.
Too much poison ivy that should be sprayed.

What would you like done with the off-leash dog park?

Value	Count	Percent
Preserve it as is	5	14%
Enhance it	21	57%
Transform it	11	30%

Explain

A fence would be great.
Add a fence
Dedicated fenced dog park is needed
Dog park is needed.
Enclose area
Enclose with fence.
Fenced area for off lead activities
Fence in. More frequent mowing.
Fence it - so that dogs can run and play off leash.
Fenced in area, and water for the dogs in summer
Gate the dog park so owners and dogs don't have to worry about traffic
Hardly ever used by dog owners. Add a fence to provide extra peace of mind.
Keep open but add a fence line to keep dogs away from chamiss.
Move the area to the correct side of the tennis courts. Add picnic tables and a water fountain.
Too many dogs loose outside boundaries.
Trim/prune trees and clear up broken branches.
Would be helpful to have water source for people and dogs.
add fence
dog area is unfenced, and does not seem like a dog focused area.
enclose it
Fence in the area. Street traffic passes closeand fencing would help secure animals from traffic flow. Add water fountain.
It's hilly, full of old tree stumps, not mown, and there are lots of holes. I rarely see off-leash dogs here!

What would you like done with the tennis courts?

Value	Count	Percent
Preserve it as is	28	80.0%
Enhance it	6	17.1%
Transform it	1	2.9%

Explain

Add lights
Add water fountain.
Add water fountain.
Back boards for solo practice
I see people regularly using these courts.
No lights, please!
Picnic area or seating area
Tennis is good exercise.
Some big cracks have appeared this year but so far are not affecting play. Hopefully, the city will monitor this

What would you like done with the open lawn?

Value	Count	Percent
Preserve it as is	15	46%
Enhance it	15	46%
Transform it	3	9%

Explain

Add a fence for a dog park
Add benches and nicer landscaping
Better maintenance and lighting!
Block it so that morons and idiots can't drive on it
Child friendly play area with equipment.
Keep.
More and better maintained picnic tables.
Surround with fence.
The open lawn is beautiful just as it is!
add a park bench
add baby playground
There is no playground anywhere near by for children except John Adams which is not supposed to be use outside of school hours. If your kids aren't school age they cant be there. All this space really should be useful for playing. You need to preserve the hill for sled riding though. the sidewalk through the open area needs to be refreshed. The mud piles at the bottom year after year and neighbors have to shovel it. It also needs to be shoveled when it snows to allow walking access to the school
Actually, the walkway from the tennis courts up the hill to the school need repair, and adding lighting would be welcome. Last fall, a neighbor was assaulted and robbed on the path at dusk; so lighting would help with safety.

What would you like done with the parking lot?

Value	Count	Percent
Preserve it as is	3	50.0%
Enhance it	3	50.0%
Transform it	0	0.0%

Explain

Maybe for 20.
Parking around John Adams is insufficient for the size of the school
Perhaps clean it up a bit. Tennis players use the parking lot and dog walkers as well.
Plenty of on-street parking already available.
Lights
No need to be bigger. the street parking is never ever used and there is a ton of it

How do you get to this Park?

Value	Count	Percent
Walk	38	95%
Bike (personal)	0	0%
Bike (Capital Bikeshare)	1	2.5%
Drive	1	2.5%
Public Transit	0	0%
Carpool	0	0%

How far do you typically travel to visit this park?

Value	Count	Percent
Less than ½ mile	30	75%
Between ½ mile to 1 mile	8	20%
Between 1-2 miles	2	5%
Over 2 miles	0	0%

Have any of the following circumstances prevented you from visiting this Park? (check all that apply)

Value	Count	Percent
I am physically limited from walking	0	0%
There is no pedestrian/bike friendly access to the park from where I live	0	0%
I have concerns about crime or personal safety	15	83%
There is not enough parking	1	6%
There is nothing in the Park that interests me	4	22%

How often do you visit this park?

Value	Count	Percent
Daily	21	53%
Weekly	15	38%
Monthly	3	8%
Yearly	1	3%

What is currently NOT in the Park that you would like to see there?

Response

A gated dog park
 A playground
 A playground area for children.
 A tot lot -- we are in need of a play area for young children in the neighborhood.
 Add a fence, so that dogs can run & play off leash.
 Add water fountain.
 Back boards in the tennis courts, and a fenced area in the off-lead Dog Park
 Dog park.
 Enclosed space for dogs to run. Water fountain. Benches.
 Fence around dog play area. Water fountains.
 Fenced dog area
 Fenced dog park Lights, neighbor was mugged, beaten & robbed there several months ago
 Fenced dog park, exercise area
 Identification of types of trees and other plants. More trash cans
 More seating
 Picnic tables and a water fountain
 Places to sit and enjoy the natural setting.
 Seating or picnic tables
 Well-marked and maintained pathways with lighting.
 a park bench or picnic table
 better maintained foot path to townhouses
 better path up the hill to JA
 more benches
 playground with baby swings
 water fountain for tennis players and other park visitors, including dogs
 A source of water, benches, and a fence (the park fronts on a street with a fair amount of traffic).
 A fence enclosure so dogs can run freely without concern for vehicle traffic. Water fountains for people & pets.

playground equipment of some kind. a fence for the dogs. a better sidewalk that gets cleared in the snow.

The large hill between the school and the tennis courts is eroding, and slants toward the woods. This area was the prime neighborhood sledding area, but erosion is making this a dangerous area to play around. This park, like the Dora Kelley Nature Park, is why most neighbors moved here in the first place. Please don't destroy it by "improving" it!

The path needs much improvement. Many children and adults use it. It needs light during winter months. Keep park open and spacious but add a perimeter fence to keep dogs away from Chambliss. Don't create a small fenced area for dogs, just keep them away from street. Add water fountain.
 As I noted in a comment above, lighting along the path from the tennis courts up the hill to the school. Also maybe more seating for socializing in both the dog walk area and on the other side of the tennis court. A trash can inside the tennis court may be a nice addition. Too many people leave empty water bottles, tennis cans tops, etc. on the court.

Is there anything else you would like to tell us about the Park?

Response

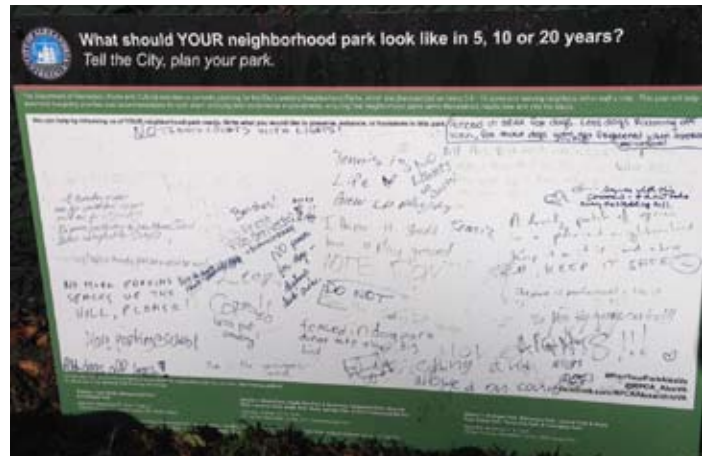
Could be maintained on a more regular basis and path from courts to school be redone
 Gate the dog park
 Greater little park with aforementioned improvements.
 I hope the expanded parking at John Adams School doesn't take park land.
 It is a perfect area for dogs.
 It is fabulous!
 It's a great green space!
 It's a lovely space that could be much nicer.
 Lovely space. Needs some sprucing. And sadly needs to keep the destructive folks out. Hard to do
 Needs better landscaping to beautify it, a seating area to sit and read.
 Night time lighting could be enhanced to provide extra sense of security.
 Off leash dogs can sometimes be a problem along the path.
 Please get rid of the poison ivy
TOO MUCH POISON IVY IN SURROUNDING AREA.
 Thanks for asking.
 add parking at top of hill behind ball field
 Adding a fence area with kissing gates to securely keep dogs apart from pedestrian foot traffic and car traffic flow.
 Install lights on the pathway to make it safer for commuters; fence in the dog part to make it a usable place to exercise your dog.
 The paved trail connecting the park with John Adams school is in very bad condition. It should be repaved with porous material.
 An Alexandria bike patrol officer presence would enhance our sense of security while using the park
 The baseball field around the school seems out of place, and under used. This area used to be a community field where games were played, dogs were walked and kids could play. Now it's fenced off from the community and only used on weekends by a handful of people during the spring and fall. This area could provide needed parking for the school, and open fields or a track for neighborhood use which would be much more useful.
 It's a great spot for those who live in the area. I use it almost daily walking my dog and playing with my son. It just needs beautification and more frequent upkeep.
 I love the space, sometimes stopping there in the colder months to read from my car; just a great place to be able to ponder nature, and enjoy the seasons.
 I DO NOT want to see organized activities. The kids and people need open space they can use as they want. There should be a sign with usage details. There is a neighbor who spends his time telling people they are not allowed to walk on the grass there and threatening to call the police. The tennis courts should be usable by small children riding ride on toys. There is no where in the neighborhood for them to do that. Or you could transform the parking lot area into a tot lot for that and make people park on the street where there is a ton of unused parking. the sidewalk on the street is also never shoveled out when it snows making the park unusable for many days/weeks.

The dog park should be on the other side of the tennis courts where it was meant to be originally. Open up rear portion for more use. Currently most of the accessible area is right next to the road. It's currently a social gathering place for everyone; parents with toddlers, parents with infants, dog walkers bicyclists, nature lovers and walkers. It's a gem!
 The makeshift paths from the apartments to this park need to be removed or made permanent. The stabbing incident here was scary!!

I have never seen tennis courts in use. This space could be something else. There are not really any signs explaining Dora Kelly nature preserve in this area. An exhibit (maybe just bulletin board) explaining wildlife, seasonal updates (including return of hunting season) would be nice to see. Play equipment would be great since there aren't any neighborhood playgrounds and school use is not allowed during school hours.

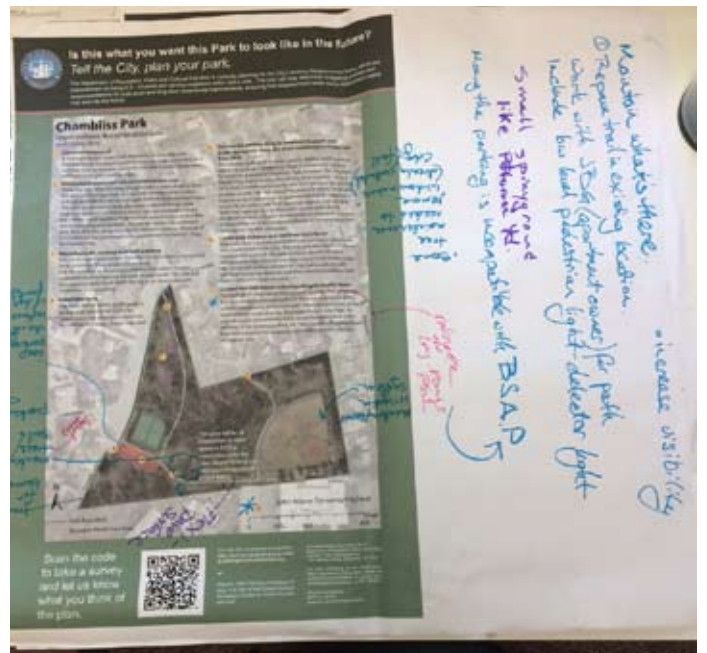
Graffiti Sign

A "graffiti sign" in the Park had a marker attached and asked park users to write down what they would like their park to look like in the future. Park users recorded the following comments between September to November 2014 (image shown below from October 27).



Draft Plan Feedback

In Spring 2015, the community provided feedback on the draft park plan through online surveys (see appendix for full results), park signs and public meetings (comments on the plan shown below). Based on information from the Spring input phase, staff updated the plans to best represent current and future community needs.



Improvement Recommendations

- 1 Construct mulched trail**
A new mulch trail, beginning at Chambliss and Fillmore would bring park users through the park, connecting to a pathway system. This path would follow the current informal path created by frequent use. Design of the path will not impact existing trees. Benches along the trail near the play equipment would provide quiet seating areas.
- 2 Install play features along mulch trail (recommendation #1)**
While the John Adams School playground is a short distance from this area of Chambliss Park, it is up a hill, making it inaccessible, and is not available to non-school aged children during school hours. This plan recommends small play areas scattered along the pathway. Some of the features would cater towards non-school age children and would include a nature-based theme to fit within the surrounding environment.
- 3 Reconfigure the existing east-west pathway**
The current path connecting Chambliss to John Adams School is in poor condition. Sharp angles create areas that are out of view. To increase visibility and safety, this plan recommends reconfiguring the path slightly north. The path will also require a switchback down the hill to be Americans with Disabilities Act compliant. The design will preserve the sledding hill and existing trees.
- 4 Install bike racks**
Bike racks will be added to the parking lot entrance and can be useful for cyclists using the park.

- 5 Re-examine the dog area location through updating the Dog Park Master Plan**
There is community interest in a fenced dog area in Chambliss Park, however, the Dog Park Master Plan states that a new fenced dog area must be minimum of 1/2 acre, 50 ft. from a residential property, and 60 ft from any stream bed or water source. While it is possible to meet these requirements in the northwest area of the park, it would commit the entire area to a singular use, not available to non-dog park users. This highly dedicated park use, in a location with passive and natural character, does not meet the broader needs of the neighborhood. An update to the Citywide Dog Park Master Plan (developed in 2000) will re-evaluate the dog area criteria described above.
- 6 Create park entrance and pervious trail from Scott Street**
Park users have created an informal path and opening in the woods from Scott Street to the park. This indicates the need to formally establish this as a pervious trail (such as mulch or gravel). The park entrance would include a refinished wooden fence at the dead end of Scott Street, a park sign, and trail. This trail would provide improved access for students and their parents to walk to John Adams School through the park.
- 7 Plant trees to serve as barrier**
Many neighbors have witnessed vehicles drive into the park from the street. Trees will serve as a natural barrier to the park border. An opening must still allow maintenance vehicles to enter the park.



Implementation Strategy

This plan uses citizen input and considers other external considerations to determine how to address park improvements incrementally over time. Most of the recommendations in the plan can be implemented independent of other projects as funding is available, whether through city or non-city funds. The cost estimates (in 2015 dollars) do not include operating costs. Prior to the implementation of any recommendation, operating costs, if any, must be considered.

The priority for each recommendation is shown as “low,” “medium,” or “high.” RPCA determined these rankings based upon (1) park user safety, (2) community prioritization feedback and the results of the 2011 and 2013 Parks and Recreation Needs Assessment, (3) life span of the existing conditions, (4) potential for non-city funding sources, (5) level of user impact, (6) relationship to other projects.

Chambliss Park					
#	Recommendation	Priority	Estimated Cost	Associated Recommendations	Dept Lead
1	Construct mulched trail	Medium	50,000-70,000		RPCA
2	Install play features along mulch trail (recommendation #1)	Medium	12,500-15,000	Should be installed after mulch trail or with trail design complete.	RPCA
3	Reconfigure the existing east-west pathway	High	30,000-40,000		RPCA
4	Install bike racks	Low	5,000-7,500		TES
5	Re-examine the dog area location through updating the Dog Park Master Plan	Medium	N/A at this time		RPCA
6	Create park entrance and pervious trail from Scott Street	Medium	25,000-35,000	Should be completed after John Adams parking lot improvements and re-establishment of grass space next to the baseball field.	RPCA
7	Plant trees to serve as barrier	Medium	1,500-2,500		RPCA

2015 Neighborhood Parks Improvement Plan: Appendix



Neighborhood Parks Plan

Chambliss Park

Community Feedback, Fall 2014



The Division of Park Planning, Design, and Capital Development is currently planning for the City's existing Neighborhood Parks, which we characterize as being 0.5 - 10 acres with a service area of up to 0.5 miles. The results of this plan will help determine budgeting priorities and recommendations for both short and long-term incremental improvements, ensuring that neighborhood parks serve Alexandria's needs now and into the future.

In Fall 2014, Staff collected community feedback to understand how the Park is used and how it could be improved in the future. The following information summarizes what we heard through an online survey, community workshop, and "graffiti board" in the park. Over 270 people responded to the survey in total, forty of which were specific to Chambliss Park.

In 10 years I would like this Park to... (top 3 rankings shown; based on a weighted score)

1. Be a safe place for children to explore
2. Be a place to relax
3. Be a place to create social connections with neighbors

What would you like done with the ballfield?

Value	Count	Percent
Preserve it as is	15	47%
Enhance it	15	47%
Transform it	2	6%

Explain

Great exercise.
I do not like the fact that it is now locked and thus unavailable for general use.
Needs more frequent trash removal and maintenance.
No lights please!
The ballfield seems rarely used
Allow access
A lot more trashcans that actually get emptied and trash pickup on the grounds. Designated parking that doesn't interfere with the school pick up for after school programs

What would you like done with the natural area?

Value	Count	Percent
Preserve it as is	15	46%
Enhance it	15	46%
Transform it	3	9%

Explain

Beautiful with landscaping and nice seating area. Nothing has been added to replace trees that have fallen.
Add paths for better access
Add picnic tables and water fountains.
I love natural settings.
Natural areas enhance the entire area.
Too much poison ivy that should be sprayed.

What would you like done with the off-leash dog park?

Value	Count	Percent
Preserve it as is	5	14%
Enhance it	21	57%
Transform it	11	30%

Explain

A fence would be great.
Add a fence
Dedicated fenced dog park is needed
Dog park is needed.
Enclose area
Enclose with fence.
Fenced area for off lead activities
Fence in. More frequent mowing.
Fence it - so that dogs can run and play off leash.
Fenced in area, and water for the dogs in summer
Gate the dog park so owners and dogs don't have to worry about traffic
Hardly ever used by dog owners. Add a fence to provide extra peace of mind.
Keep open but add a fence line to keep dogs away from chamiss.
Move the area to the correct side of the tennis courts. Add picnic tables and a water fountain.
Too many dogs loose outside boundaries.
Trim/prune trees and clear up broken branches.
Would be helpful to have water source for people and dogs.
add fence
dog area is unfenced, and does not seem like a dog focused area.
enclose it
Fence in the area. Street traffic passes close and fencing would help secure animals from traffic flow. Add water fountain.
It's hilly, full of old tree stumps, not mown, and there are lots of holes. I rarely see off-leash dogs here!

What would you like done with the open lawn?

Value	Count	Percent
Preserve it as is	15	46%
Enhance it	15	46%
Transform it	3	9%

Explain

Add a fence for a dog park
Add benches and nicer landscaping
Better maintenance and lighting!
Block it so that morons and idiots can't drive on it
Child friendly play area with equipment.
Keep.
More and better maintained picnic tables.
Surround with fence.
The open lawn is beautiful just as it is!
add a park bench
add baby playground
There is no playground anywhere near by for children except John Adams which is not supposed to be outside of school hours. If your kids aren't school age they can't be there. All this space really should be useful for playing. You need to preserve the hill for sled riding though. the sidewalk through the open needs to be refreshed. The mud piles at the bottom year after year and neighbors have to shovel it. It needs to be shoveled when it snows to allow walking access to the school
Actually, the walkway from the tennis courts up the hill to the school need repair, and adding lighting would be welcome. Last fall, a neighbor was assaulted and robbed on the path at dusk; so lighting would be safety.

What would you like done with the parking lot?

Value	Count	Percent
Preserve it as is	3	50.0%
Enhance it	3	50.0%
Transform it	0	0.0%

Explain

Maybe for 20.
Parking around John Adams is insufficient for the size of the school
Perhaps clean it up a bit. Tennis players use the parking lot and dog walkers as well.
Plenty of on-street parking already available.
Lights
No need to be bigger. the street parking is never ever used and there is a ton of it

What would you like done with the tennis courts?

Value	Count	Percent
Preserve it as is	28	80.0%
Enhance it	6	17.1%
Transform it	1	2.9%

Explain

Add lights
Add water fountain.
Add water fountain.
Back boards for solo practice
I see people regularly using these courts.
No lights, please!
Picnic area or seating area
Tennis is good exercise.
Some big cracks have appeared this year but so far are not affecting play. Hopefully, the city will mow this

What is currently NOT in the Park that you would like to see there?

Response

A gated dog park
 A playground
 A playground area for children.
 A tot lot -- we are in need of a play area for young children in the neighborhood.
 Add a fence, so that dogs can run & play off leash.
 Add water fountain.
 Back boards in the tennis courts, and a fenced area in the off-lead Dog Park Dog park.
 Enclosed space for dogs to run. Water fountain. Benches.
 Fence around dog play area. Water fountains.
 Fenced dog area
 Fenced dog park Lights, neighbor was mugged, beaten & robbed there several months ago
 Fenced dog park, exercise area
 Identification of types of trees and other plants. More trash cans
 More seating
 Picnic tables and a water fountain
 Places to sit and enjoy the natural setting.
 Seating or picnic tables
 Well-marked and maintained pathways with lighting.
 a park bench or picnic table
 better maintained foot path to townhouses
 better path up the hill to JA
 more benches
 playground with baby swings
 water fountain for tennis players and other park visitors, including dogs
 A source of water, benches, and a fence (the park fronts on a street with a fair amount of traffic).
 A fence enclosure so dogs can run freely without concern for vehicle traffic. Water fountains for people & pets.
 playground equipment of some kind. a fence for the dogs. a better sidewalk that gets cleared in the snow.

The large hill between the school and the tennis courts is eroding, and slants toward the woods. This area was the prime neighborhood sledding area, but erosion is making this a dangerous area to play around. This park, like the Dora Kelley Nature Park, is why most neighbors moved here in the first place. Please don't destroy it by "improving" it!

The path needs much improvement. Many children and adults use it. It needs light during winter months. Keep park open and spacious but add a perimeter fence to keep dogs away from chambliiss. Don't create a small fenced area for dogs, just keep them away from street. Add water fountain.
 As I noted in a comment above, lighting along the path from the tennis courts up the hill to the school. Also maybe more seating for socializing in both the dog walk area and on the other side of the tennis court. A trash can inside the tennis court may be a nice addition. Too many people leave empty water bottles, tennis can tops, etc. on the court.

Is there anything else you would like to tell us about the Park?

Response

Could be maintained on a more regular basis and path from courts to school be redone
 Gate the dog park
 Greater little park with aforementioned improvements.
 I hope the expanded parking at John Adams School doesn't take park land.
 It is a perfect area for dogs.
 It is fabulous!
 It's a great green space!
 It's a lovely space that could be much nicer.
 Lovely space. Needs some sprucing. And sadly needs to keep the destructive folks out. Hard to do
 Needs better landscaping to beautify it, a seating area to sit and read.
 Night time lighting could be enhanced to provide extra sense of security.
 Off leash dogs can sometimes be a problem along the path.
 Please get rid of the poison ivy
 TOO MUCH POISON IVY IN SURROUNDING AREA.
 Thanks for asking.
 add parking at top of hill behind ball field
 Adding a fence area with kissing gates to securely keep dogs apart from pedestrian foot traffic and car traffic flow.
 Install lights on the pathway to make is safer for commuters; fence in the dog part to make it a usable place to exercise your dog.
 The paved trail connecting the park with John Adams school is in very bad condition. It should be repaved with porous material.
 An Alexandria bike patrol officer presence would enhance our sense of security while using the park
 The baseball field around the school seems out of place, and under used. This area used to be a communia field where games were played, dogs were walked and kids could play. Now it's fenced off from the community and only used on weekends by a handful of people during the spring and fall. This area could provide needed parking for the school, and open fields or a track for neighborhood use which would be much more useful.
 It's a great spot for those who live in the area. I use it almost daily walking my dog and playing with my son.
 It just needs beautification and more frequent upkeep.
 I love the space, sometimes stopping there in the colder months to read from my car; just a great place to be able to ponder nature, and enjoy the seasons.
 I DO NOT want to see organized activities. The kids and people need open space they can use as they want. There should be a sign with usage details. There is a neighbor who spends his time telling people they are not allowed to walk on the grass there and threatening to call the police. The tennis courts should be usable by small children riding ride on toys. There is no where in the neighborhood for them to do that. Or you could transform the parking lot are into a tot lot for that and make people park on the street where there is a ton of unused parking. the sidewalk on the street is also never shoveled out when it snows making the park unusable for many days/weeks.
 The dog park should be on the other side of the tennis courts where it was meant to be originally.
 Open up rear portion for more use. Currently most of the accessible area is right next to the road.
 It's currently a social gathering place for everyone; parents with toddlers, parents with infants, dog walkers bicyclists, nature lovers and walkers. It's a gem!
 The makeshift paths from the apartments to this park need to be removed or made permanent. The stabbing incident here was scary!!
 I have never seen tennis courts in use. This space could be something else. There are not really any signs explaining Dora Kelly nature preserve in this area. An exhibit (maybe just bulletin board) explaining wildlife, seasonal updates (including return of hunting season) would be nice to see. Play equipment would be great since there aren't any neighborhood playgrounds and school use is not allowed during school hours.

How do you get to this Park?

Value	Count	Percent
Walk	38	95%
Bike (personal)	0	0%
Bike (Capital Bikeshare)	1	2.5%
Drive	1	2.5%
Public Transit	0	0%
Carpool	0	0%

How far do you typically travel to visit this park?

Value	Count	Percent
Less than ½ mile	30	75%
Between ½ mile to 1 mile	8	20%
Between 1-2 miles	2	5%
Over 2 miles	0	0%

Have any of the following circumstances prevented you from visiting this Park? (check all that apply)

Value	Count	Percent
I am physically limited from walking	0	0%
There is no pedestrian/bike friendly access to the park from where I live	0	0%
I have concerns about crime or personal safety	15	83%
There is not enough parking	1	6%
There is nothing in the Park that interests me	4	22%

How often do you visit this park?

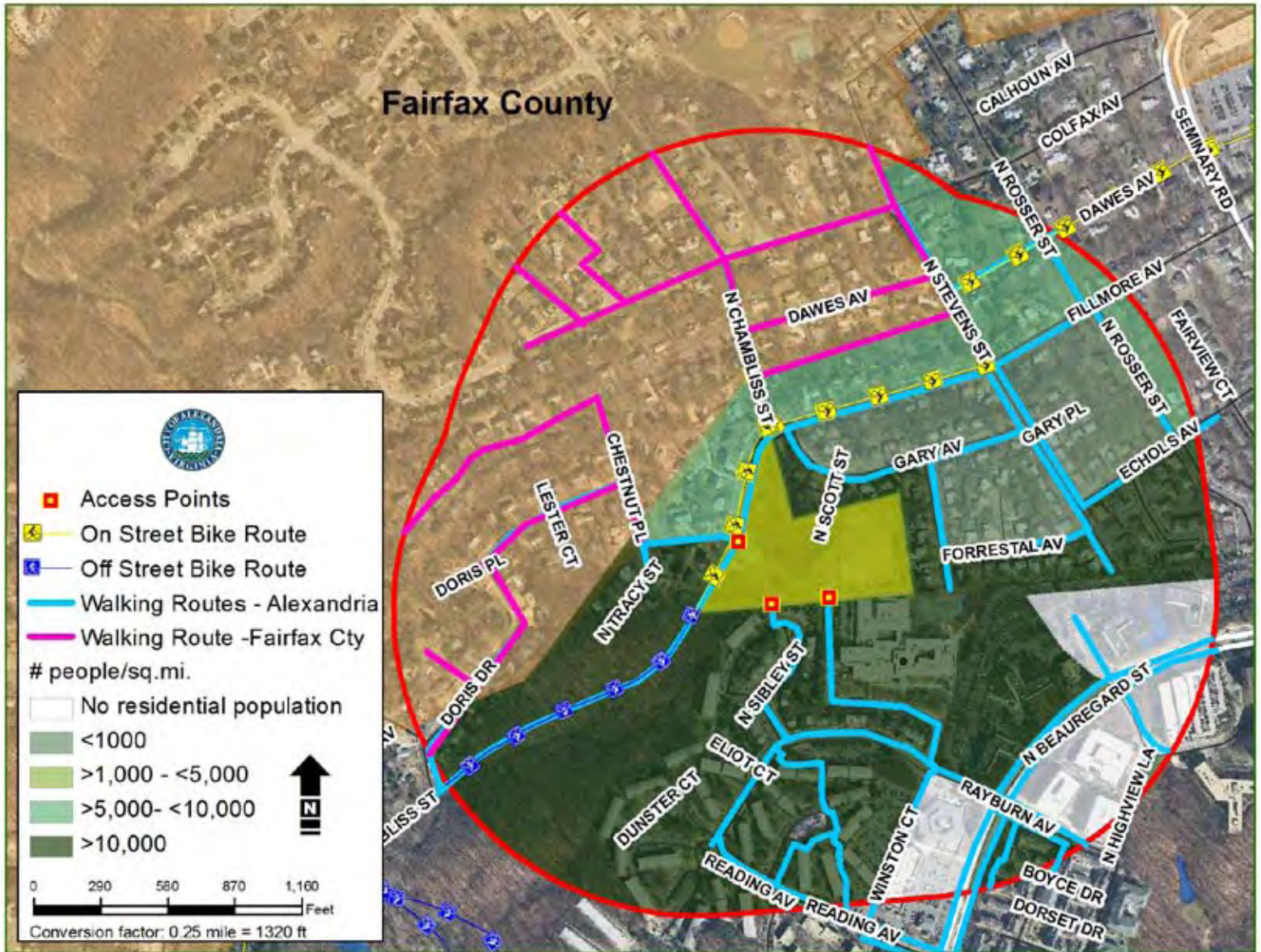
Value	Count	Percent
Daily	21	53%
Weekly	15	38%
Monthly	3	8%
Yearly	1	3%

Graffiti Sign

A "graffiti sign" in the Park had a marker attached and asked park users to write down what they would like their park to look like in the future. Park users recorded the following comments between September to November 2014 (image shown above from October 27).



- A lovely patch of green in a pleasant neighborhood. Keep it as is, and above all, keep it safe. The park is perfect and I like it. What sets this park apart from other parks is its feeling of open space (4x)
- Fenced in dog park (3x)
- No fenced-in dog park (2x) - same handwriting opposing previous comments
- Do not take away sledding hill
- Repave pathway to John Adams School
- Better entry/exit to Sibley St
- More baby/toddler play area would be nice
- Tennis courts with lights (3x)
- No tennis courts with lights (3x)- same handwriting opposing previous comments
- All this park needs are a couple of of benches
- No more parking spaces up the hill
- No dogs off-leash
- Dogs should remain off-leash (same handwriting opposing previous comments)
- Love tennis courts (2x)
- Add benches (2x)
- playground



Chambliss Park

Improvement Recommendations

Draft (Spring 2015)

1 Construct nature trail

A new soft surface nature trail, beginning at Chambliss and Fillmore would bring park users through the park, connecting to a pathway system. Benches along the trail near the play equipment would provide quiet seating areas.

2 Install play features and remove unfenced dog area

While the John Adams School playground is a short distance from this area of Chambliss Park, it is up a hill, making it inaccessible, and not available to non-school aged children during school hours. This plan recommends small play areas scattered along a new pathway. Some of the features would cater towards non-school age children and would include a nature-based theme to fit within the surrounding environment. This would replace the unfenced dog area, which is rarely used for its intended purpose. Removal of the unfenced dog area requires an amendment to the City's Dog Park Master Plan.

3 Reconfigure the existing east-west pathway

The current path connecting Chambliss to John Adams School is in poor condition. Sharp angles create areas that are out of view. To increase visibility and safety, this plan recommends reconfiguring the path slightly north. The path will also require a switchback down the hill to be Americans with Disabilities Act compliant.

4 Install bike racks

Bike racks will be added to the parking lot entrance and can be useful for cyclists using the adjacent entrance to the Holmes Run Valley Stream bike trail.

5 Convert the parking lot to an unfenced dog park with landscape barrier along the street and Resource Protection Area (RPA)

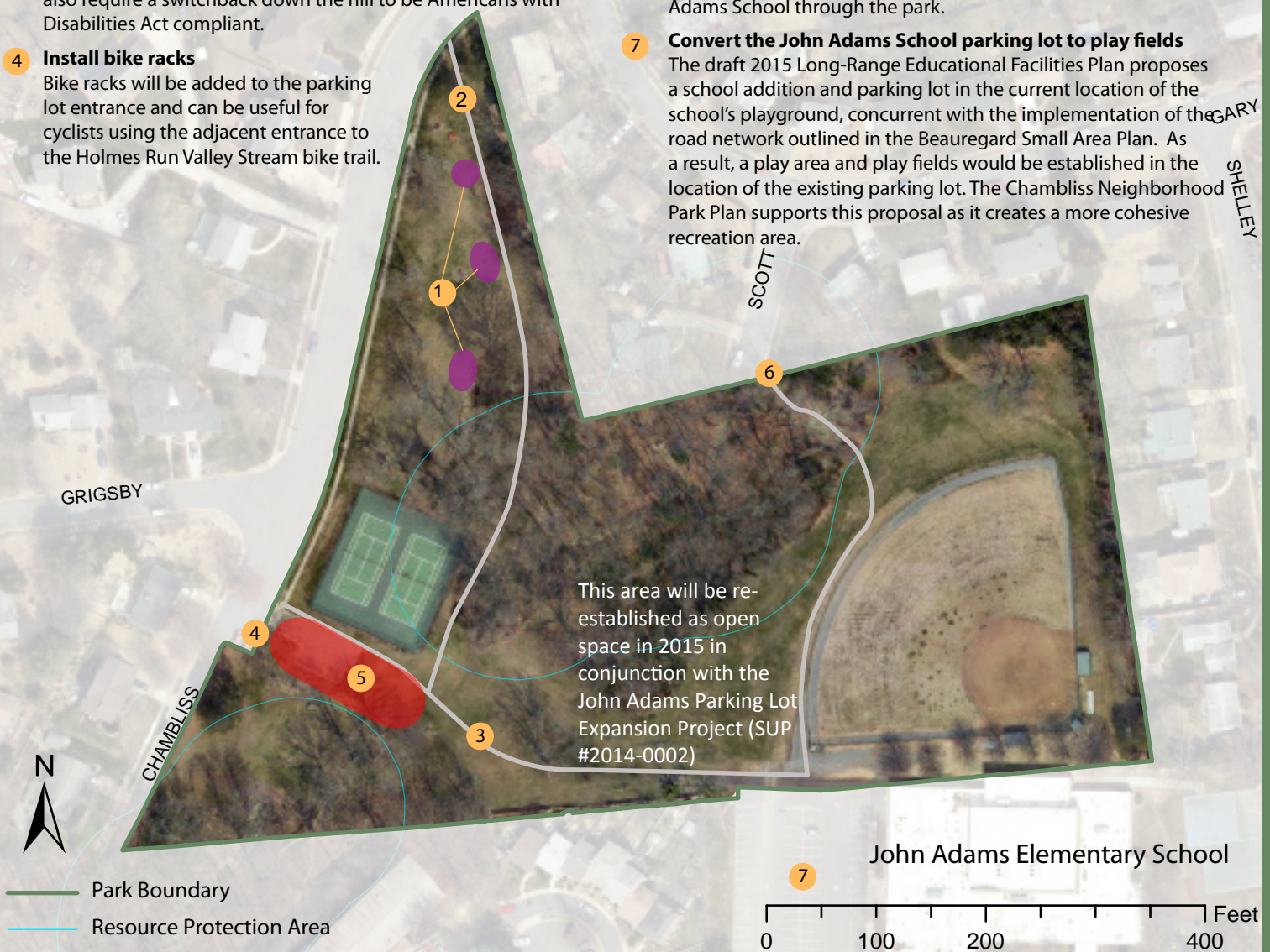
The existing parking lot is under used as there is street parking along the park on Chambliss St. There is community support for a fenced dog area in Chambliss Park, however, the Dog Park Master Plan stipulates that fenced dog areas must be 1/2 acre, 50 ft. from a residential property, and 60 ft from any stream bed or water source. The only area of the park that meets these size requirements is area shown in recommendation #1, however, it would fill the entire area. Staff does not support such a highly dedicated park use in a location with passive and natural character. Instead, this plan recommends an unfenced dog area at the parking lot with a landscape barrier to prevent dogs from running into the RPA and street.

6 Create park entrance and trail from Scott Street

Park users have created a desire line and opening in the woods from Scott Street to the park. This indicates the need to formally establish this as a trail. The park entrance would include a refinished wooden fence at the dead end of Scott Street, a park sign, and a soft surface nature trail. This trail would provide improved access for students and their parents to walk to John Adams School through the park.

7 Convert the John Adams School parking lot to play fields

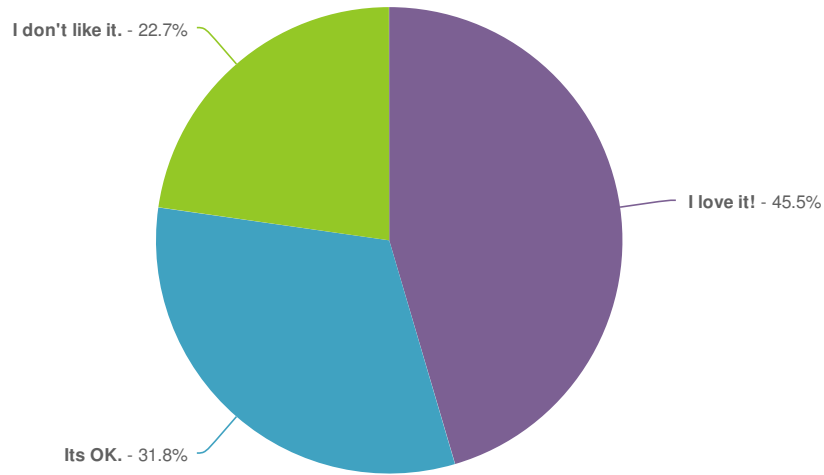
The draft 2015 Long-Range Educational Facilities Plan proposes a school addition and parking lot in the current location of the school's playground, concurrent with the implementation of the road network outlined in the Beauregard Small Area Plan. As a result, a play area and play fields would be established in the location of the existing parking lot. The Chambliss Neighborhood Park Plan supports this proposal as it creates a more cohesive recreation area.





Chambliss Park Draft Improvement Plan Survey Results, July 2015

What do you think of the following recommendations?-Construct nature trail

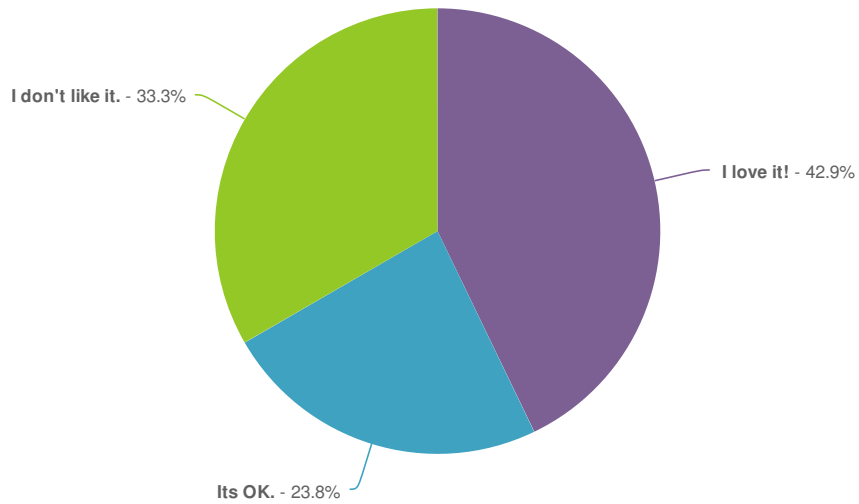


Value	Percent	Count
I love it!	45.5%	10
Its OK.	31.8%	7
I don't like it.	22.7%	5
Total		22

Explain-Construct nature trail

Count	Response
1	Its not really that large of an area so a trail would only take a minute or two to walk.
1	Should tie to The Dora Kelly trail at the end of Chambliss.
1	Would drive out wildlife
1	not necessary
1	As a life long resident of Alexandria I grew up exploring this area and a nature trail would be a great addition.
1	There's a nature trail a few feet from this proposed trail in the Dora Kelley Nature Park. This isn't necessary.
1	The trail is fine if it doesn't cost a lot, and it doesn't require the dog area to be relocated, and thus prevent it from being fenced.
1	There are many nature trails close by This is a waste of resources. We need a fenced dog area/park.

What do you think of the following recommendations?-Convert the John Adams School parking lot to play fields



Value	Percent	Count
I love it!	42.9%	9
Its OK.	23.8%	5
I don't like it.	33.3%	7
Total		21

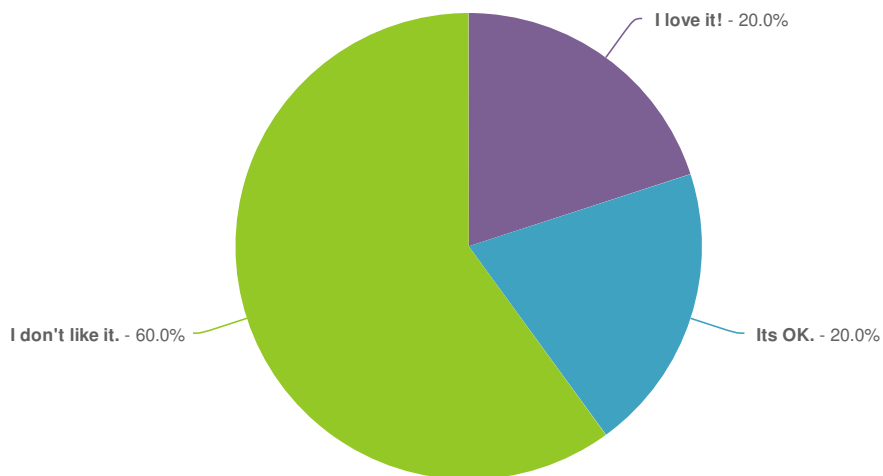
Explain-Convert the John Adams School parking lot to play fields

Count	Response
1	I don't want to lose John Adams playground. We use it every weekend.
1	already inadequate parking at school; why make it less
1	HATE THIS! JAES needs more play area, for sure, but if you are going to pull traffic around to the current playground you will have a HUGE negative impact on those neighbors who already deal with noise from the ballfield and huge # of people on the playground at all hours. Pease dont do this to them too? You could make better use of the playground area by flattening it out more to give more open space. If you do push the building back there, keep the rest of it open from traffic or parking.
1	Absolutely, absolutely not! There's already a parking problem at John Adams and now you propose to take parking away?? Incredibly bad idea.
1	Parking Lot: Leave it there. The city is mistaken to think it is poorly used. I live across the street from it. It is used by tennis players, parents delivering kids to John Adams, people hiking in Dora Kelley Nature Park, not to mention people who are turning around in their cars because they are lost. (Without it, as happens several times a year, cars will continue into the dead end, don't have the skills to back out, and so drive across the park land making ugly tire tracks in the ground and frequently getting stuck, requiring a tow truck.)
1	Due to the large school population it is imperative that we increase the amount of play fields available to the students and community.
1	Parking is already a huge problem at John Adams School. There isn't enough parking at all--and you want to REMOVE the parking lot???

Count Response

1 This is seriously the worst idea in your plan. The parking is a given for the neighbors, and it ultimately is more compatible with the neighbors than play field or the school playground. DO NOT relocated the school playground here. The BSAP calls for the area next to the playground to be open space ... that is smart, compatible planning. Not this idea, which is looking to fix something that is not broken.

What do you think of the following recommendations?-Convert the parking lot to an unfenced dog park with landscape barrier along the street and Resource Protection Area (RPA)



Value	Percent	Count
I love it!	20.0%	4
Its OK.	20.0%	4
I don't like it.	60.0%	12
Total		20

Explain-Convert the parking lot to an unfenced dog park with landscape barrier along the street and Resource Protection Area (RPA)

Count Response

1 Do we need a dog park. I live in the neighborhood. The whole area is a dog park.

1 Dog area needs to be unpaved

1 Only bad things happen in this parking lot. Thank you for doing this.

1 Parking lot is too small, just fence the current dog park.

1 Prefer FENCED Dog Park

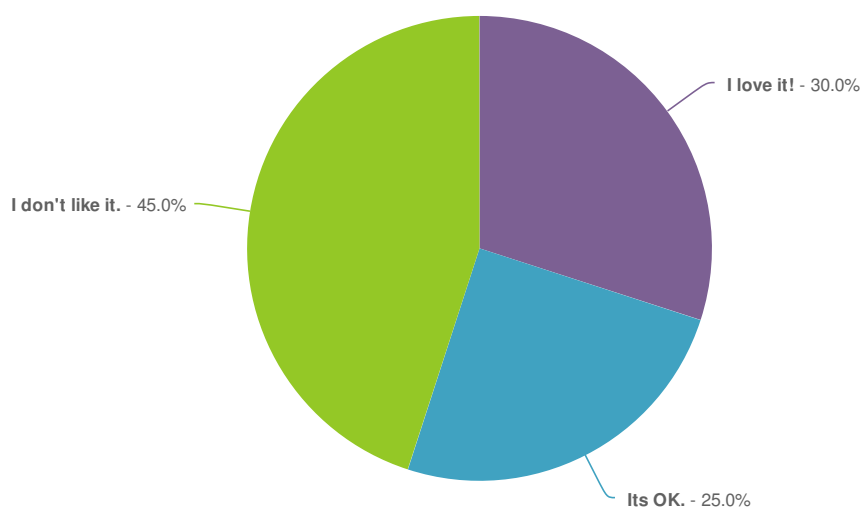
1 See #2. The area around the tennis courts need to be left alone!

1 The parking lot is needed. Please don't get rid of it.

1 much better location for a dog park. Street parking is adequate.

Count	Response
1	owners ddefinitely want to keep an unfenced dog park area.
1	We need a fenced dog area. Alexandria is SUPPOSED to be a dog friendly city. There is also a leash law in Alexandria. Residents need a fenced area where the dogs can be off leash. I have the impression you are not paying attention to the responses from the community.
1	the parking should remain. it is reasonably used for a park this size. this is NOT (nor will it become) a transit-accessible park. by placing the kiddie play area next to the parking, you can have a dog area large enough to meet your guidelines where it is today, and fence it in. We really need a fenced in one at this park, as there are frequent dog issues (dogs running loose in the exercise area, and confrontations with those on leash being walked along or through the park).
1	I would not want this to be the only place for dogs in this whole big space. We have a lot of dogs who need space to run and this small area is not it. Not really sure why this is needed at all. You could do lanscaping along that side of Chambill to make it more difficult to go into the street, but that has never been a big issue. Honestly, we could use a flat area for the kids to ride their ride on toys and use roller blades. A basketball hoop could be nice too.
1	Unleashed big dogs are already a problem here. This plan would make it impossible for children to access the tennis court without walking through an area with many off-leash big dogs. We have been "trapped" in the tennis courts because we have to wait for the dogs to leave. And walking through dog waste before getting to the courts is disgusting.
1	No strong opinion on this although I see no reason to take the parking lot away. It, like existing icons throughout the area, is used frequently, especially by tennis players.
1	This plan puts unleashed dogs in the same area as path users. The re must be a barrier between the dogs and the path because many dog owners do not keep control of their dogs.

What do you think of the following recommendations?-Create park entrance and trail from Scott Street

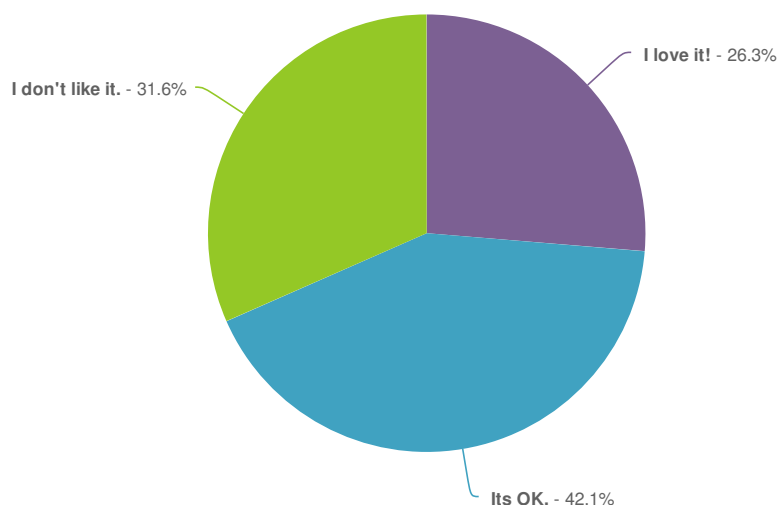


Value	Percent	Count
I love it!	30.0%	6
Its OK.	25.0%	5
I don't like it.	45.0%	9
Total		20

Explain-Create park entrance and trail from Scott Street

Count	Response
1	I don't know where this is.
1	Yet another great idea.
1	adverselyaffects wildlife
1	encourages students to walk to school. Supports Safe Routes to School program.
1	not necessary
1	I'm on the fence here. I would want the neighbors on that street to weigh in. This area is largely used by kids smoking in the woods. A trail might invite more nighttime traffic through there.
1	You need to talk to existing homeowners who border the property. Don't make the assumption that everyone wants this.

What do you think of the following recommendations?-Install bike racks



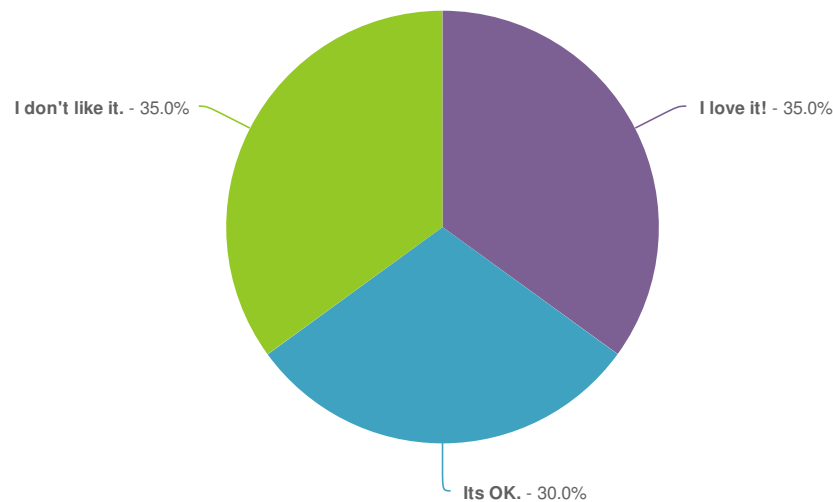
Value	Percent	Count
I love it!	26.3%	5
Its OK.	42.1%	8
I don't like it.	31.6%	6
Total		19

Explain-Install bike racks

Count	Response
1	Doesn't make sense
1	I doubt there will be any stopped bikes, but still a great idea.
1	Supports our bicycle master plan.

Count	Response
1	There doesn't seem to be a need for bike racks.
1	The bike riders who come through go straight through. I have never seen one stop at the park for a break. Given the steepness of the hill through Dora Kelly, kids generally never ride that path.
1	For whom?? Bicyclists use the area constantly. There's never been a request for bike racks since the bicyclists are riding them!
1	if you go to the park to bike, you do not need a rack, since you are riding. if you go to play tennis, play with the kids, or walk the dog, you do not need a rack since you are right there with your bike. another needless expenditure. Today, we lean our bikes up against the tennis court fence, or against a tree, or ... you get the picture.

What do you think of the following recommendations?-Install play features and remove unfenced dog area



Value	Percent	Count
I love it!	35.0%	7
Its OK.	30.0%	6
I don't like it.	35.0%	7
Total		20

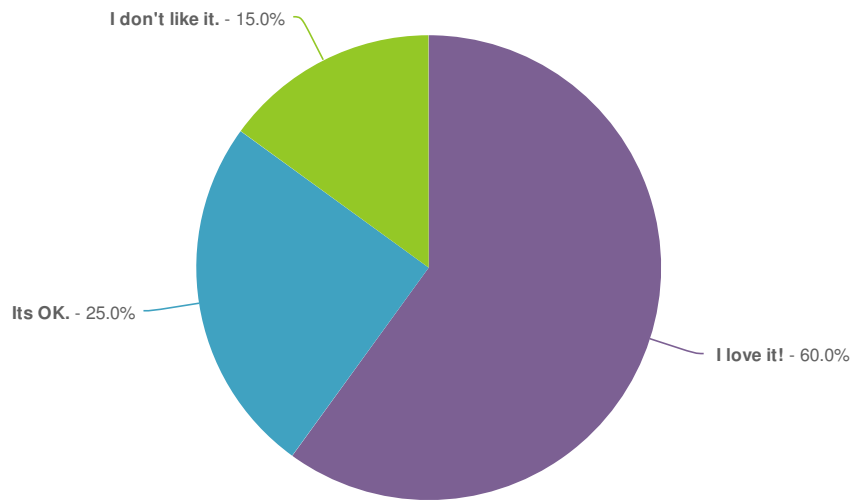
Explain-Install play features and remove unfenced dog area

Count	Response
1	Fence the dog area
1	HOORAY!!!!!!!!!!!!!!!!!!!!!!!!!!!!!! My children will be delighted!
1	Leave it as dog park but fence it.
1	This is a residential area. You need to check with homeowners whose property adjoin this area.
1	Your information is incorrect. This dog park is used extensively!!

Count Response

1	the play features should be placed "downstream" from the tennis courts and parking, as we truly need a fenced dog area in this park, and keep it where the unfenced one is.
1	I like the idea of having play features in here. Its a flatter area for the dogs than the hill but there are dog owners who prefer each. I would not want to see either become the exclusive area for dogs
1	A fenced dog area is more desirable than an unfenced area because many dog owners do not keep control of their dogs.
1	The current location is under utilized as a dog park. Play equipment would encourage more visits to the park.
1	I have a 2-year-old and we would love more play areas in the neighborhood that we can use during school hours.

What do you think of the following recommendations?-Reconfigure the existing east-west pathway



Value	Percent	Count
I love it!	60.0%	12
Its OK.	25.0%	5
I don't like it.	15.0%	3
Total		20

Explain-Reconfigure the existing east-west pathway

Count Response

1	See note above on Nature trail
1	Too hard to get a stroller up the hill.
1	Would increase safety and accessibility for visitors to the park.
1	add one street lamp
1	see no reason at all to spend money on relocating this. it simply needs maintenance.

Count Response

1	Will there be lighting on the path? Preferably motion-detector with lights facing away from the townhouses.
1	Yes, repave the path. Needs it badly. No, do not move it. That would destroy the sledding hill that hundreds of children play on every winter. And if trees are removed it could potentially destabilize the ground and endanger nearby townhouse structural soundness.
1	I appreciate the need to redo this path since we walk it every day to school. Given the steepness of the hill, even with a switch back, I would not expect too many people to use it who need that accomodation. I am concerned that the plan to move it farther north to do the switchback will impeded on a well-loved and well-used sledding hill, so please make sure the design leaves the bulk of that area alone
1	No! The current path needs to be resurfaced. Don't take trees that stand on the hill nor the hill itself! Children use that hill and the space around it all year long. It's one of the most popular sledding hills in West Alexandria! Please leave it alone!

Do you feel all of the comments were heard and addressed in the draft Chambliss Park plan? If not, what is missing and how can we make the plan better?

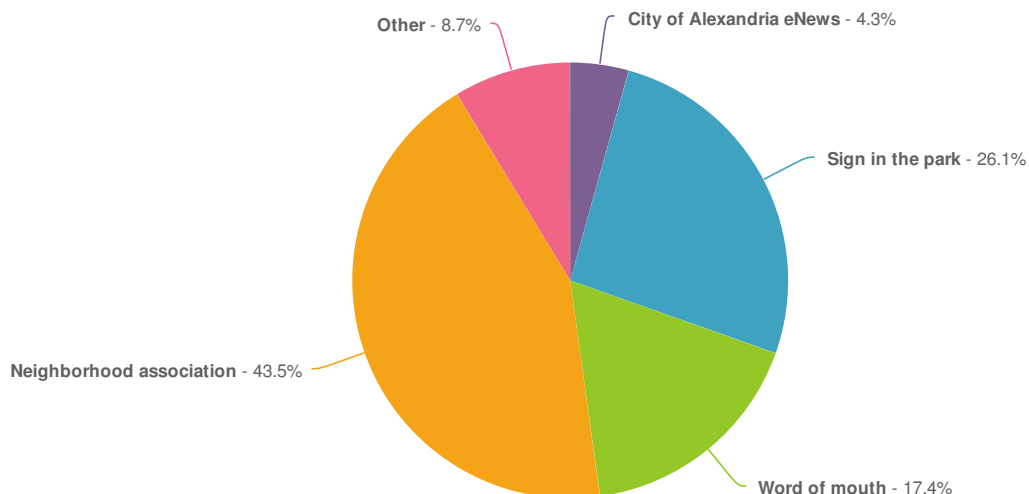
Count Response

1	Clearly, no. The dog area needs to be left alone.
1	Not sure what the comments are.
1	There was no discussion of possible timing.
1	yes
1	yes, very inclusive and transparent process
1	Dedicate the part of the park below the trail to John Adams to the Dora Kelly Nature Park and let it be returned to the natural state. This would help buffer the RPA and screen the park from the redeveloped hamlet area.
1	Maintenance: Maintain the current park. Repair the tennis courts and keep them up. Keep the grass cut regularly and the fallen dead limbs picked up. And to repeat, repave the path. 4. Leave the upper park (NE of the tennis courts) alone. The open grassy area is pleasant (when maintained). There is wooded area with fox dens and assorted other wildlife. It's already a dog exercise area. 5. Foresteing. I personally recommend that the field across from the houses on the dead end (including mine) be forested. Two large manholes and poor drainage after a rain make the field unusable as a ball field. A few extra trees in the city would be most welcome. I hope I have captured the thoughts of my neighbors who were with me. I have cc'd them in case I have misrepresented or omitted their views.
1	The area below the parking lot/ dog park and below the proposed walk to John Adams School should be transferred from Chambliss Park to Dora Kelley Nature Park and be returned to a natural area, This would work well with the projected redevelopment of the Hamlet Apartment area in the next few years. It would also help to screen the park from the construction noise, dust and other activity. The area is not planned to be improved in your present plan and is not utilized by people at the present time.
1	I do not feel my comments were heard. The plan can be made better by cutting back on any changes. The only true need here is for fencing in the dog area.
1	Insufficient space to fully comment on this plan. Comments should be limited to residents of City, and this survey provides comments from Fairfax county residents. How else may I comment. I have talked to park employees, but they don't seem responsive.
1	Lights are missing on the trail to the school. A neighbor was mugged on this trail. It gets dark early in the winter...we needs lights.

Count Response

1	Please make sure you address the need for sufficient safety lighting in any pathway created. We had a bad mugging in the last year. Also please make sure the ramp can accommodate ADA walkers and wheelchairs -- meaning the slope is not too steep. Please also don't remove all parking at John AdAms school because many of us have to park there for voting.
1	NO The community wants & needs a fenced dog park/area. We love our nature trails and nature area and we have plenty fortunately. Now we need a fenced dog park. Thank you for taking this seriously
1	I do not see the plan for electric lighting along the paths. Lighting is necessary during the winter months.
1	No. City parks are closed from sunset to sunrise, yet one plan calls for lights to be installed. Why waste limited city funds on installing and maintaining lights in a closed park? Comments in my neighborhood came mostly from Fairfax county residents, not City residents --- these should be ignored.
1	The one thing missing is lighting and possibly CCTV cameras to keep the area safe at night. There have been criminal incidents along that path between the tennis courts and John Adams and it needs much better lighting and, if possible, CCTV cameras.
1	I think some of the comments that you collected earlier were made by people who don't live in the area. I've lived here for more than 30 years, and Chambliss Park has been used constantly during that time, by kids in the summer and especially in the winter, making the hill one of the most popular sledding spots in W. Alexandria. Dog owners also love to exercise their dogs here--it doesn't need to be fenced in. That would spoil it for everyone. And please, please leave the trees in the center where they are! The existing path (which started as a dirt path) needs to be resurfaced, preferably with the same material used as a study in Dora Kelley Park. Lights facing away from the townhouses, but not shining into the homes further down the hill, should also be installed, with a sensor. The hill is also great for watching fireflies at night (they congregate in the many trees near the tennis court) as well as stars. Too much light would destroy both of those activities and not contribute to anything. The suggestion that I've heard over and over is leave things as they are, but MAINTAIN them! The tennis court could really use re-surfacing (no lights, please). This is a residential area bordering a Nature Park. Why are you trying to make this beautiful little park one that you might see in the heart-of-the City? It's beautiful as it is--it complements the Nature Park. Please don't destroy it!
1	YES! THIS IS THE BEST PLAN. So far above my expectations. Love, love, love it. You have thought of every user here and the changes will make this a better, less dangerous place to play for adults, children, and dogs.
1	Not sure of all comments you received. Those that I gave were mostly addressed except for lighting on the path which I think is important for people coming from bus stop/the school/shopping after dark.

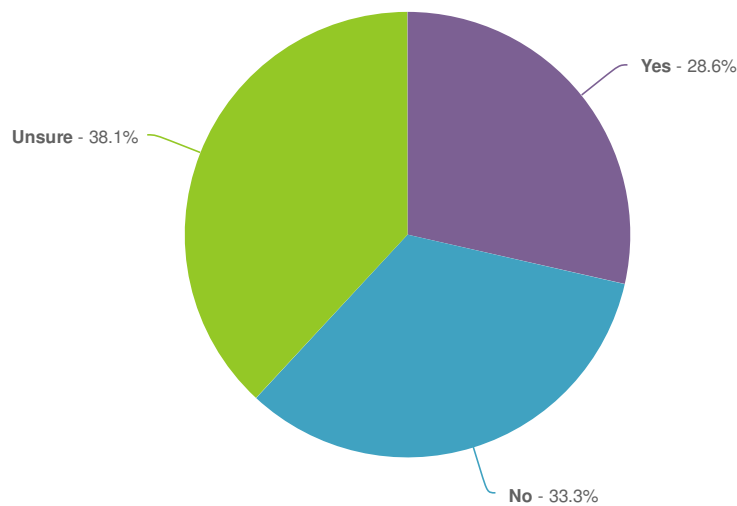
How did you learn about the Neighborhood Park Plan survey?



Value	Percent	Count
City of Alexandria eNews	4.4%	1
Sign in the park	26.1%	6
Word of mouth	17.4%	4
Neighborhood association	43.5%	10
Other	8.7%	2
Total		23

Responses "Other"	Count
Left Blank	23
Fellow dog owners	1
I live in this area	1

Will you be attending the workshop on June 4 from 7pm-8:30pm at Patrick Henry Recreation Center to discuss the draft park plans?



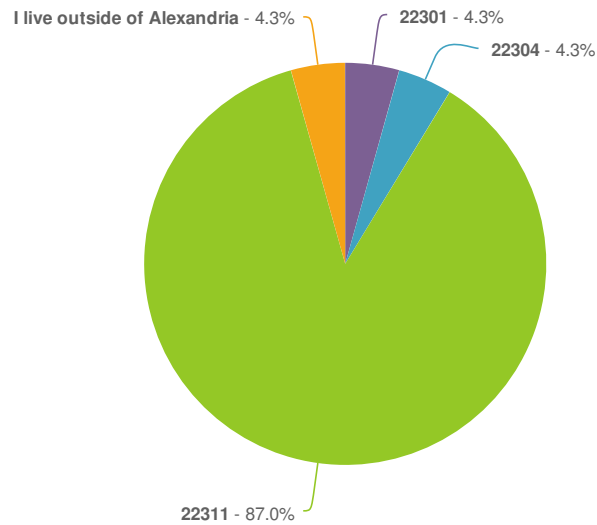
Value	Percent	Count
Yes	28.6%	6
No	33.3%	7
Unsure	38.1%	8
Total		21

How many members of your household are in the following age groups?

	# in household	Responses
Under 5	5 100.0%	5

	# in household	Responses
6-12	2 100.0%	2
13-18	2 100.0%	2
19-29	3 100.0%	3
30-49	10 100.0%	10
50-69	11 100.0%	11
70 or above	7 100.0%	7

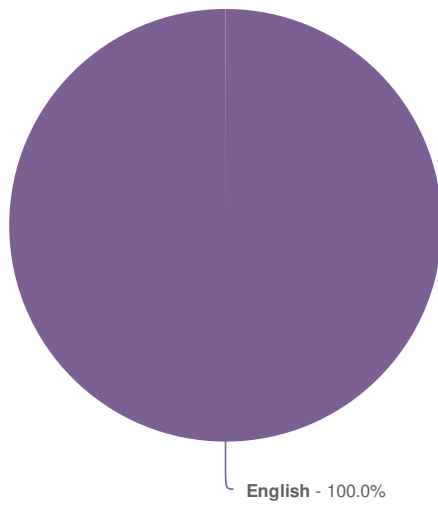
What is your zip code?



Value	Percent	Count	Statistics
22301	4.4%	1	Sum 490,825.0
22304	4.4%	1	Average 22,310.2
22311	87.0%	20	StdDev 2.5
I live outside of Alexandria	4.4%	1	Max 22,311.0
Total		23	

Responses "I live outside of Alexandria"	Count
Left Blank	25

What is the primary language spoken in your home?



Value	Percent	Count
English	100.0%	22
Total		22

Responses "other"	Count
Left Blank	25