

Beach Park

History and Character



Beach Park is a 1.4 acre area in the Rosemont neighborhood. There are no known archeological sites within the park.

City Council appropriated \$2,400 in 1943 to purchase lots adjacent to the Maury School for playground purposes. The playground was built the following year (though children over 13 years old were banned from using it for some time following accounts of vandalism).

In 1944, Rucker Place between Maury School and Beach Park was an Alexandria street that had been reserved for sledding with police stationed to caution motorists. The Chief of Police also warned that children seen hitching a ride by grabbing the back of a car would have their sleds confiscated until the snow melted. Following many incidents involving children playing in the street, Council voted to close Rucker Place to vehicular traffic in 1954 to allow safe passage for children between two playgrounds. This plan was never implemented and Rucker has remained open to vehicles since.

In 1974, City Council renamed the park in honor of a beloved retiring Maury School Principal, Lillian E. Beach.

Today, the park is very well used by the community and serves as a social meeting place for neighbors and families. It also hosts the annual Rosemont Citizens Associations events.



Rucker Street is an active road dividing the Maury School and playground and Beach Park.

The open lawn is used for both passive play and for tot soccer programs. The high use of the lawn and drainage issues have continued to deteriorate the green space with an often muddy patch in the center. The open space is often used for off-leash dogs, also leading towards the poor grass condition.



The City installed the wooden stairs in the center of the park to serve as amphitheater seating, however, the stairs are rarely used as such and are in dilapidated condition. The slope is more often known as the sledding hill of the neighborhood and is just as popular today as it was in the 1940's during snow events.



There are two pathways into the park, one at the northwest corner and one at North View Terrace. Otherwise, it is porous along the edges and there is not a clear entrance into the park. The south and east edge is marked by wooden bollards in poor condition.

The park is one of the few neighborhood parks in the City with ample lawn space for multiple passive and active uses and also has plenty of shade from surrounding trees. Several stately, native canopy trees occur throughout the site – all relics of pre-development - including two large, old Pin Oak (*Quercus palustris*), a large Silver Maple (*Acer saccharinum*), and a City co-champion Persimmon (*Diospyros virginiana*).

Existing Conditions



Community Feedback

In Fall 2014, staff collected community feedback to understand how the park is used and how it could be improved in the future. The following information summarizes what we heard through an online survey, community workshop, and “graffiti board” in the park. Over 270 people responded to the survey in total, forty-one of which were specific to Beach Park. Staff used the collected information to develop draft park plans.

Comments from Community Workshop held on October 25, 2014

Playground	Preserve	Keep mulch surface and sand box
Playground	Preserve	Keep grass and natural feel
Playground	Preserve	Maintain ADA Routes
Amphitheater	Enhance	Investigate school use of amphitheater
		-Causes flooding in neighborhood basements. - Needs engineering study. - Discuss system solution with Dr. Singh (18 W. Masonic)
Various	Transform	- Park must be planned after drainage has been fixed.

What would you like done with the amphitheater stairs?

Value	Count	Percent
Preserve it as is	8	25%
Enhance it	10	31%
Transform it	14	44%

Explain

Clean it up
Fix (x2)
Get rid of them!!! They are awful and mess up sledding (x3)
I had wondered if that's what it was.
Needs some drainage. It gets swampy when it rains
Not used at all and is a safety hazard
Part of park history; fits in nicely with terrain; hope you can keep
Seems like something better could be done here.
The space seems to be under-used. Can it be more active? Rope climbing? Sledding?
Other ideas?
A nice historical piece but not sure if this could be used in a better way?
The amphitheater is a neat idea, but it is overgrown. It would be great to clean it up and have better seating for watching games.
These don't seem to have a purpose. It'd be cool if the city made use of the stairs, but it doesn't, and the wood is rotting and it takes up what could be usable green space.
If rehabbed, the amphitheater could provide a neighborhood venue for local music groups, plays, etc.
Some of the wood planks have large nails sticking out, which pose a danger to kids, especially when they are sledding in winter.
These are so deteriorated as to be dangerous now. The space has never been actually used as an amphitheater in the 10 years I've lived in Rosemont. This is one of the only contained spaces where kids in the neighborhood can go sledding in the winter, and the steps impede that and can cause injuries especially when just covered enough with snow as to be hidden.

What would you like done with the open lawn?

Value	Count	Percent
Preserve it as is	15	44%
Enhance it	14	41%
Transform it	5	15%

Explain

Alexandria needs more open space like this!
Can include some native wildflowers and meadow area.
Drainage and lack of grass are problem.
Drainage could be better (x3)
Great space kids to run on, Have played a lot of soccer there.
Mini turf field
This is a much-needed open space for kids to run, play soccer, etc.
Add more opportunities for soccer
Close the park to be able to sod until it's strong enough for soccer, etc.
Great for kids running around/playing sports/soccer etc.
Periodically needs upgrade; dog owners run and play with dogs all the time and I see poop not cleaned up

In 10 years I would like this Park to...

(Top 3 rankings shown; based on a weighted score)

1. Be a safe place for children to explore
2. Be a place to create social connections with neighbors
3. Be a place to relax

What would you like done with the playground?

Value	Count	Percent
Preserve it as is	16	46%
Enhance it	15	43%
Transform it	4	11%

Explain

Remove
Haven't used it much but kids seem to enjoy it.
More wood and natural elements would be great. More "movable parts"
We need new climbing facilities
It'd be great if there was more playground equipment. The offerings for really young kids (ages 6 mos-3 years) is pretty paltry.
Add elements that interest 3-5th graders. Add building materials like logs, increase the stream so they can play in the water.
The play space for little ones has old equipment and isn't as nice as the equipment for bigger kids
The small wooden climbing structure is slippery for kids, especially when covered in sand. Does not seem safe.

What would you like done with the seating?

Value	Count	Percent
Preserve it as is	8	25%
Enhance it	20	63%
Transform it	4	13%

Explain

A designated picnic area would be great, with some picnic tables.
Artistic benches could be a great addition.
There is not enough seating
There's not enough seating for adults near the playground, and no place for family picnics, etc.
There's seating?
add some benches
but get rid of the railroad ties!!!!!!!
more interested in opportunities for kids to be active than for parents to sit :-)
one more bench under the tree
very limited
An overhang/trellis with picnic benches would be lovely and the city can charge for renting this space for birthday parties, etc.!!! Look at new Rocky Run Park in Arlington for ideas

How often do you visit this park?

Value	Count	Percent
Daily	8	20%
Weekly	18	44%
Monthly	13	32%
Yearly	2	5%

Is there anything else you would like to tell us about the Park?

Response

Dog owners use the park extensively. The lawn is usually smelly and unhygienic. Small children, who spend a lot of time on the ground, also use the lawn for organized soccer. Drainage issues plague that Park and the Maury school yard. Great park, but I do feel it has more bugs and is an issue getting bit during the summer. Green space needs improving. Bike run?
I love the trees and the big open spaces.
It is generally very well kept.
Keep the trees! Maybe add more benches, space to hang out and socialize.
Love the big tree at the top of the amphitheater.
Needs some stormwater controls
This is a pretty passive park (there's a small playground and lots of just open space) and that's ok, if we could just have some upgrades/better use of the land.
This is one of the few good-size and contained (i.e., safe, not right next to a busy road) open spaces where children in the Rosemont/Del Ray/Old Town area can run and explore freely. To me it is most important to preserve that, not by adding more equipment but by focusing on making it safe for free play and to shore up its infrastructure so that it protects the Maury playground below, which is a very important play space not just for the school but the entire community.
There is a need for more space for soccer practice. Also help alleviate the stormwater issues so that the great work for the Maury schoolyard can move ahead. Thanks!
I don't want to see anything changed with this park. I can't believe this park is on the list when you have Maury slated to be renovated based on all the fund raising. There needs to be a park that services older kids not just preschool age. Something similar to rocky run park in Arlington should be created. The Mvcs playgrounds should be looked at based on the amount if non school use and foot traffic it brings to the del ray businesses. I also think the empty pool space at the corner of mt Vernon and del ray is a complete waste and should be addressed prior to beach park.
We have so many kids that play soccer but no futsal courts. It would be great to have one of these.
There is way too much wasted space at Beach Park. The amphitheater steps need to go. They are not used and a safety hazard. Poor rainwater management makes the Maury fields a mess
I have lived nearby for 15 years and am always surprised how little care it receives. The playground is now in good shape, but it seems to be ignored by Parks & Rec for maintenance.
It is a safe, enjoyable space. We like the trees that provide greenery and privacy for the homes along its border. It's great for sledding so if there was a way to build up the hill that would be great!
We live nearby and love to hear the sounds of the little kids playing Tball and soccer on Sat morning, and the families paying touch football on the weekends and holidays.

I love being able to walk there with my kids (and dog, who loves the pomegranate tree). Maybe actually labeling what the tree species are could add some educational elements.

What is currently NOT in the Park that you would like to see there?

Response

A turf field for recreational usage.
Activities. Nature walks. Playground for older kids (9 and 10 years). Baseball field.
Activities/play for older kids (10+); adult exercise equipment (bars for pull-ups, etc.)
Additional trash cans for trash and pet waste.
Better drainage from run off
Grass!
I love it! Please repair it but don't tear it all open and build.
More for older children
Needs more shade!
Picnic Tables
Play equipment for older kids, accessible equipment, rainwater management
Running water in the stream bed, climbing trees
Seating/picnic space
Shade on the main playground areas
The lousy rotten railroad ties and the amphitheater. Get rid of them, please!
drinking fountain on lower end
more seating including so you can have a small group talking with each other
I don't want to see anything changed with this park. I can't believe this park is on the list when you have Maury slated to be renovated based on all the fund raising. There needs
Would be great to have breech park combined with Maury park so that it would be a bigger green space
Activities for older children and adults, more trees and wildflowers, maybe a native garden. Large boulders, logs and natural elements to explore. Climbable trees. Movable
Please no dog parks. When I see owners running their dogs in the area kids play soccer I cringe. this is typically at dusk and mid-day when there is no enforcement (is There is plenty there. Just a different climbing structure for smaller children that is less slippery.
better drainage. kids take the rocks and play with them and that doesn't help the little drainage help there is there. Also would like to see "no using the bushes as a bathroom sign". Would love to see a dog play area too

How do you get to this Park?

Value	Count	Percent
Walk	35	85%
Bike (personal)	3	7%
Bike (Capital Bikeshare)	0	0%
Drive	3	7%
Public Transit	0	0%
Carpool	0	0%

How far do you typically travel to visit this park?

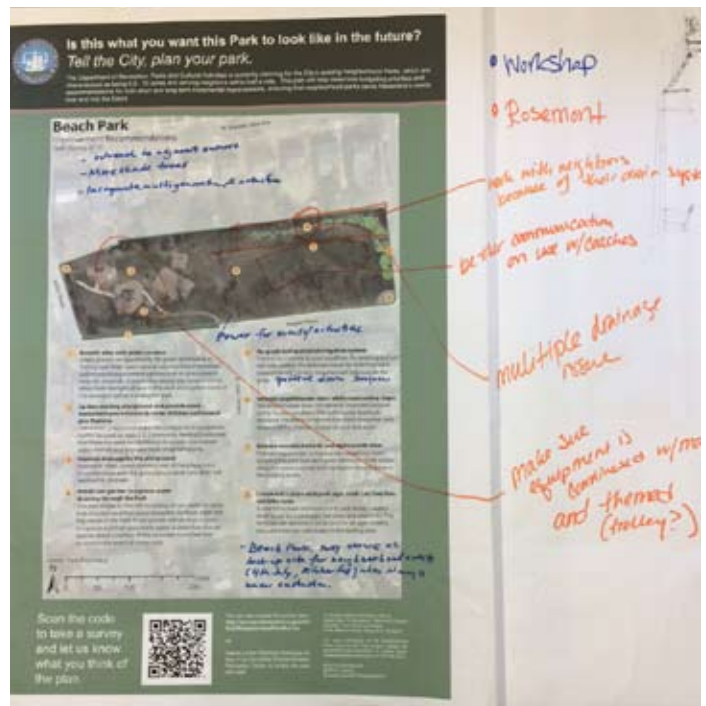
Value	Count	Percent
Less than 1/2 mile	25	61%
Between 1/2 mile to 1 mile	12	29%
Between 1-2 miles	3	7%
Over 2 miles	1	2%

Have any of the following circumstances prevented you from visiting this Park? (check all that apply)

Value	Count	Percent
I am physically limited from walking	1	20%
There is no pedestrian/bike friendly access to the park from where I live	1	20%
I have concerns about crime or personal safety	0	0%
There is not enough parking	1	20%
There is nothing in the Park that interests me	3	60%

Draft Plan Feedback

In Spring 2015, the community provided feedback on the draft park plan (below) through online surveys (see appendix for full results), park signs and public meetings. Based on information from the Spring input phase, staff updated the plans to best represent current and future community needs.

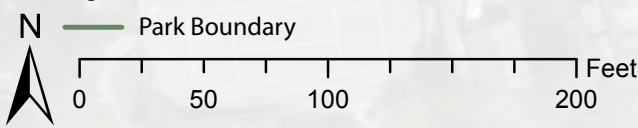


Improvement Recommendations



- 1 Retrofit alley with green systems**
Alleys provide an opportunity for green stormwater infrastructure. Their lower vehicle volumes lend themselves well to pervious pavement options such as grass-pave or recycled materials. A green alley would also serve as a transition from the right-of-way to the park and capture some of the rainwater before it enters the park.
- 2 Update existing playground and provide more imaginative and natural play features, incorporating a theme based on history of the Rosemont neighborhood**
The current playground is outdated standard playground equipment, mainly focused on ages 2-5. Community feedback indicated that there is a need for additional structures that interest multiple ages and promote more imaginative play. Features will be coordinated with the proposed Maury Schoolyard Initiative.
- 3 Improve drainage by the playground**
Rainwater often causes ponding east of the playground. In combination with the green alley, a small yard drain is recommended to resolve this problem.
- 4 Install vegetated swale to capture water draining through the Park**
The park slopes to the north causing all rain water to move that direction and then pond along the northern edge and the center of the field. A vegetated swale including trees, shrubs, and grasses will serve as a basin to capture and then absorb the water. A drain may also be used to direct a portion of the rainwater to an overflow location in the event of heavy rains. Any drainage improvements will be coordinated with the adjacent neighbors.

- 5 Re-grade turf, amend soil, and install water management system**
The turf is currently in poor condition. Re-grading and amending the soil will help control the drainage issues by diverting water toward the swale. A quick coupler will serve as a water source for maintenance, as needed.
- 6 Remove center amphitheater stairs while maintaining slope and refurbish the stairs on the sides**
The amphitheater does not serve its intended purpose and is in poor condition. Removing the center area of stairs will enhance the hill for children to play on and sled down. Repairing the stairs on either side provides seating in the park.
- 7 Remove wooden bollards and replace with trees**
The existing wooden bollards prevent vehicles from entering the park but are in poor condition. Trees would serve the same purpose and also better absorb water in the existing swale. Trees will be limbed to maintain visibility to Maury School.
- 8 Create entry plaza with park sign, trash can, benches, and bike racks**
A new formalized entrance to the park would create a small space for a park sign, benches, and bike racks. The benches can become a social spot for all ages to relax. Adjacent trees can add shade to the seating area.
- 9 Install a power source**
The community has a long history of using this park for neighborhood events. A power source will provide electricity for the events.
- 10 Make Johnston Place more pedestrian oriented**
As proposed in the Maury Schoolyard Initiative and the Long Range Educational Facilities Plan (2015), pedestrian oriented enhancements, such as a raised crosswalk, will improve the safety and connection between Beach Park and Maury School.



Cost Estimates and Implementation

This plan uses citizen input and considers other external considerations to determine how to address park improvements incrementally over time. Most of the recommendations in the plan can be implemented independent of other projects as funding is available, whether through city or non-city funds. The cost estimates (in 2015 dollars) do not include operating costs. Prior to the implementation of any recommendation, operating costs, if any, must be considered.

The priority for each recommendation is shown as “low,” “medium,” or “high.” RPCA determined these rankings based upon (1) park user safety, (2) community prioritization feedback and the results of the 2011 and 2013 Parks and Recreation Needs Assessment, (3) life span of the existing conditions, (4) potential for non-city funding sources, (5) level of user impact, (6) relationship to other projects.

Beach Park					
#	Recommendation	Priority	Estimated Cost	Associated Recommendations	Dept Lead
1	Retrofit alley with green systems	Low	75,000-100,000		TES
2	Update existing playground and provide more imaginative and natural play features, incorporating a theme based on history of the Rosemont neighborhood	Low	200,000 - 350,000	Play elements should be coordinated with Maury School Initiative to ensure they are not too similar.	RPCA
3	Improve drainage by the playground	High	3,500-5,000	Should be implemented at the same time as vegetaged swale (recommendation #4)	RPCA
4	Install vegetated swale to capture water draining through the Park	High	50,000-75,000	Should be implemented at the same time as vegetaged swale (recommendation #7)	RPCA
5	Re-grade turf, amend soil, and install water management system	Medium	50,000-80,000		RPCA
6	Remove center amphitheater stairs while maintaining slope and refurbish the stairs on the sides	High	20,000-30,000		RPCA
7	Remove wooden bollards and replace with trees	Medium	7,500-10,000	Should be implemented at the same time as vegetaged swale (recommendation #4)	RPCA
8	Create entry plaza with park sign, trash can, benches, and bike racks	Low	50,000-75,000		RPCA
9	Install a power source	Low	20,000-30,000		RPCA
10	Make Johnston Place more pedestrian oriented	Medium	12,500-15,000		TES/ACPS/RPCA

2015 Neighborhood Parks Improvement Plan: Appendix



Neighborhood Parks Plan

Beach Park

Community Feedback, Fall 2014



The Division of Park Planning, Design, and Capital Development is currently planning for the City's existing Neighborhood Parks, which we characterize as being 0.5 - 10 acres with a service area of up to 0.5 miles. The results of this plan will help determine budgeting priorities and recommendations for both short and long-term incremental improvements, ensuring that neighborhood parks serve Alexandria's needs now and into the future.

In Fall 2014, Staff collected community feedback to understand how the Park is used and how it could be improved in the future. The following information summarizes what we heard through an online survey, community workshop, and "graffiti board" in the park. Over 275 people responded to the survey in total, forty-one of which were specific to Beach Park.

In 10 years I would like this Park to...

(top 3 rankings shown; based on a weighted score)

1. Be a safe place for children to explore
2. Be a place to create social connections with neighbors
3. Be a place to relax

What would you like done with the amphitheater stairs?

Value	Count	Percent
Preserve it as is	8	25%
Enhance it	10	31%
Transform it	14	44%

Explain

Clean it up.
Fix (x2)
Get rid of them!! They are awful and mess up sledding (x3)
I had wondered if that's what it was.
Needs some drainage. It gets swampy when it rains.
Not used at all and is a safety hazard.
Part of park history; fits in nicely with terrain; hope you can keep.
Seems like something better could be done here.
The space seems to be under-used. Can it be more active? Rope climbing? Sledding?
Other ideas?
A nice historical piece but not sure if this could be used in a better way?
The amphitheater is a neat idea, but it is overgrown. It would be great to clean it up, and have better seating for watching games.
These don't seem to have a purpose. It'd be cool if the city made use of the stairs, but it doesn't, and the wood is rotting and it takes up what could be usable green space.
If rehabbed, the amphitheater could provide a neighborhood venue for local music groups, plays, etc.
Some of the wood planks have large nails sticking out, which pose a danger to kids, especially when they are sledding in winter.
These are so deteriorated as to be dangerous now. The space has never been actually used as an amphitheater in the 10 years I've lived in Rosemont. This is one of the only contained spaces where kids in the neighborhood can go sledding in the winter, and the steps impede that and can cause injuries especially when just covered enough with snow as to be hidden.

What would you like done with the open lawn?

Value	Count	Percent
Preserve it as is	15	44%
Enhance it	14	41%
Transform it	5	15%

Explain

Alexandria needs more open space like this!
Can include some native wildflowers and meadow area.
Drainage and lack of grass are problem.
Drainage could be better (x3)
Great space kids to run in. Have played a lot of soccer there.
Mini turf field.
This is a much-needed open space for kids to run, play soccer, etc.
Add more opportunities for soccer.
Close the park to be able to sod until it's strong enough for soccer, etc.
Great for kids running around/playing sports/soccer etc.
Periodically needs upgrade, dog owners run and play with dogs all the time and I see poop not cleaned up.

What would you like done with the playground?

Value	Count	Percent
Preserve it as is	16	46%
Enhance it	15	43%
Transform it	4	11%

Explain

Remove.
Haven't used it much but kids seem to enjoy it.
More wood and natural elements would be great. More "movable parts".
We need new climbing facilities.
It'd be great if there was more playground equipment. The offerings for really young kids (ages 6 mos-3 years) is pretty paltry.
Add elements that interest 3-5th graders. Add building materials like logs, increase the stream so they can play in the water.
The play space for little ones has old equipment and isn't as nice as the equipment for bigger kids.
The small wooden climbing structure is slippery for kids, especially when covered in sand. Does not seem safe.

What would you like done with the seating?

Value	Count	Percent
Preserve it as is	8	25%
Enhance it	20	63%
Transform it	4	13%

Explain

A designated picnic area would be great, with some picnic tables.
Artistic benches could be a great addition.
There is not enough seating.
There's not enough seating for adults near the playground, and no place for family picnics, etc.
There's seating?
add some benches
but get rid of the railroad ties!!!!!!
more interested in opportunities for kids to be active than for parents to sit :-)
one more bench under the tree
very limited.
An overhang/trellis with picnic benches would be lovely and the city can charge for renting this space for birthday parties, etc.!!! Look at new Rocky Run Park in Arlington for ideas.

Is there anything else you would like to tell us about the Park?

Response

Dog owners use the park extensively. The lawn is usually smelly and unhygienic. Small children, who spend a lot of time on the ground, also use the lawn for organized soccer. Drainage issues plague that Park and the Maury school yard
Great park, but I do feel it has more bugs and is an issue getting bit during the summer.
Green space needs improving. Bike run?
I love the trees and the big open spaces.
It is generally very well kept.
Keep the trees! Maybe add more benches, space to hang out and socialize.
Love the big tree at the top of the amphitheater.
Needs some stormwater controls
This is a pretty passive park (there's a small playground and lots of just open space) and that's ok, if we could just have some upgrades/better use of the land.
This is one of the few good-size and contained (i.e., safe, not right next to a busy road) open spaces where children in the Rosemont/Del Ray/Old Town area can run and explore freely. To me it is most important to preserve that, not by adding more equipment but by focusing on making it safe for free play and to shore up its infrastructure so that it protects the Maury playground below, which is a very important play space not just for the school but the entire community.
There is a need for more space for soccer practice. Also help alleviate the stormwater issues so that the great work for the Maury schoolyard can move ahead. Thanks!
I don't want to see anything changed with this park. I can't believe this park is on the list when you have Maury slated to be renovated based on all the fund raising. There needs to be a park that services older kids not just preschool age. Something similar to rocky run park in Arlington should be created. The Mvcs playgrounds should be looked at based on the amount of non school use and foot traffic it brings to the del ray businesses. I also think the empty pool space at the corner of mt Vernon and del ray is a complete waste and should be addressed prior to beach park.
We have so many kids that play soccer but no futsal courts. It would be great to have one of these.
There is way too much wasted space at Beach Park. The amphitheater steps need to go. They are not used and a safety hazard. Poor rainwater management makes the Maury fields a mess
I have lived nearby for 15 years and am always surprised how little care it receives. The playground is now in good shape, but it seems to be ignored by Parks & Rec for maintenance.
It is a safe, enjoyable space. We like the trees that provide greenery and privacy for the homes along its border. It's great for sledding so if there was a way to build up the hill, that would be great!
We live nearby and love to hear the sounds of the little kids playing Tball and soccer on Sat morning, and the families paying louch football on the weekends and holidays.

I love being able to walk there with my kids (and dog, who loves the pomegranate tree). Maybe actually labeling what the tree species are could add some educational elements.

What is currently NOT in the Park that you would like to see there?

Response

A turf field for recreational usage.
Activities. Nature walks. Playground for older kids (9 and 10 years). Baseball field.
Activities/play for older kids (10+); adult exercise equipment (bars for pull-ups, etc.)
Additional trash cans for trash and pet waste.
Better drainage from run off
Grass!
I love it! Please repair it but don't tear it all open and build.
More for older children
Needs more shade!
Picnic Tables
Play equipment for older kids, accessible equipment, rainwater management
Running water in the stream bed, climbing trees
Seating/picnic space
Shade on the main playground areas
The lousy rotten railroad ties and the amphitheater. Get rid of them, please!
drinking fountain on lower end
more seating including so you can have a small group talking with each other
I don't want to see anything changed with this park. I can't believe this park is on the list when you have Maury slated to be renovated based on all the fund raising. There needs to be a bigger green space
Would be great to have breech park combined with Maury park so that it would be a bigger green space
Activities for older children and adults, more trees and wildflowers, maybe a native garden. Large boulders, logs and natural elements to explore. Climbable trees. Movable
Please no dog parks. When I see owners running their dogs in the area kids play soccer I cringe. This is typically at dusk and mid-day when there is no enforcement (is there is plenty there. Just a different climbing structure for smaller children that is less slippery.
better drainage, kids take the rocks and play with them and that doesn't help the little drainage help there is there. Also would like to see "no using the bushes as a bathroom sign". Would love to see a dog play area too

How do you get to this Park?

Value	Count	Percent
Walk	35	85%
Bike (personal)	3	7%
Bike (Capital Bikeshare)	0	0%
Drive	3	7%
Public Transit	0	0%
Carpool	0	0%

How far do you typically travel to visit this park?

Value	Count	Percent
Less than 1/2 mile	25	61%
Between 1/2 mile to 1 mile	12	29%
Between 1-2 miles	3	7%
Over 2 miles	1	2%

Have any of the following circumstances prevented you from visiting this Park? (check all that apply)

Value	Count	Percent
I am physically limited from walking	1	20%
There is no pedestrian/bike friendly access to the park from where I live	1	20%
I have concerns about crime or personal safety	0	0%
There is not enough parking	1	20%
There is nothing in the Park that interests me	3	60%

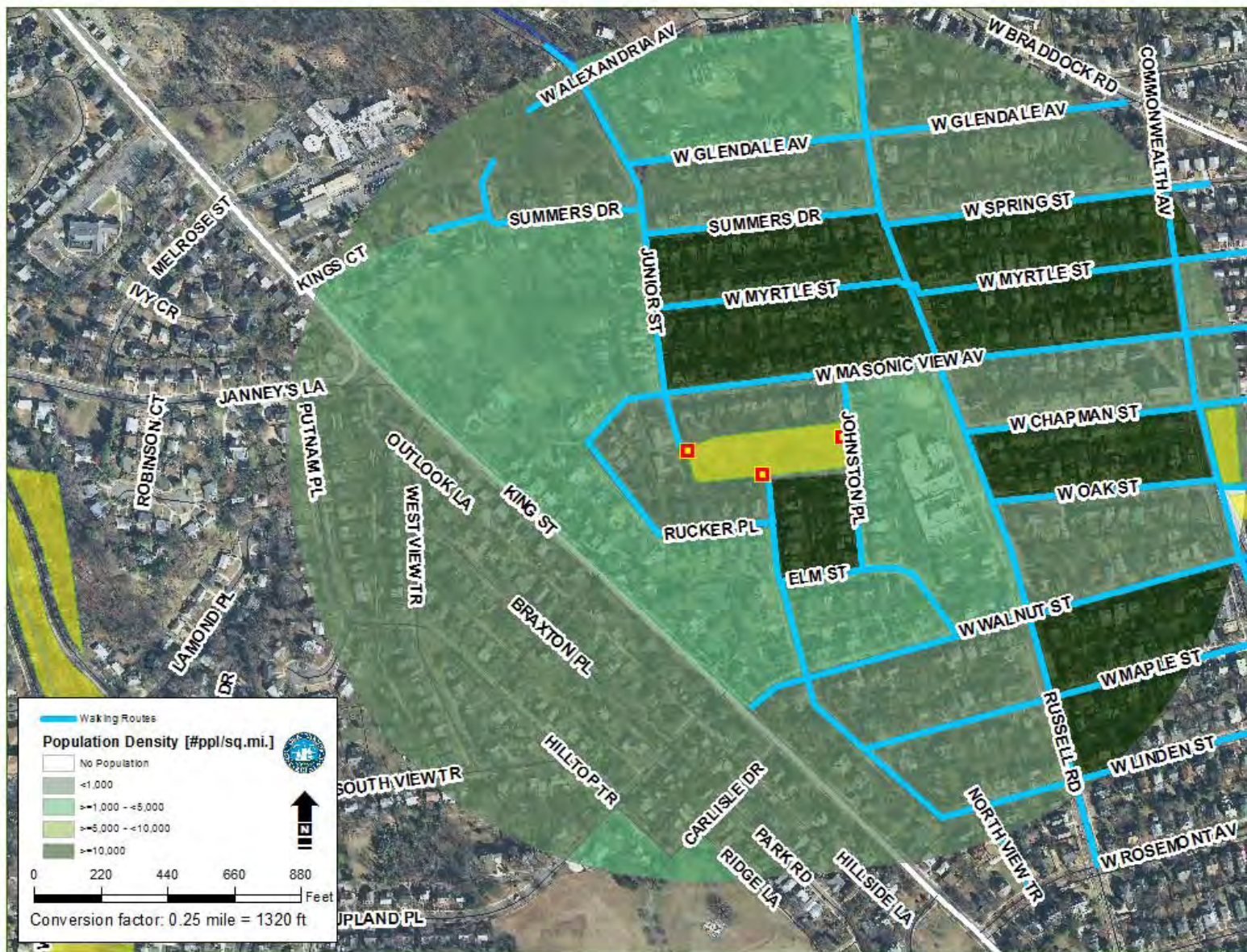
How often do you visit this park?

Value	Count	Percent
Daily	8	20%
Weekly	18	44%
Monthly	13	32%
Yearly	2	5%

Comments from Community Workshop held on October 25, 2014

Playground	Preserve	Keep mulch surface and sand box
Playground	Preserve	Keep grass and natural feel
Playground	Preserve	Maintain ADA Routes
Amphitheater	Enhance	Investigate school use of amphitheater
		-Causes flooding in neighborhood basements. - Needs engineering study. - Discuss system solution with Dr. Singh (18 W. Masonic) - Park must be planned after drainage has been fixed.
Various	Transform	fixed.



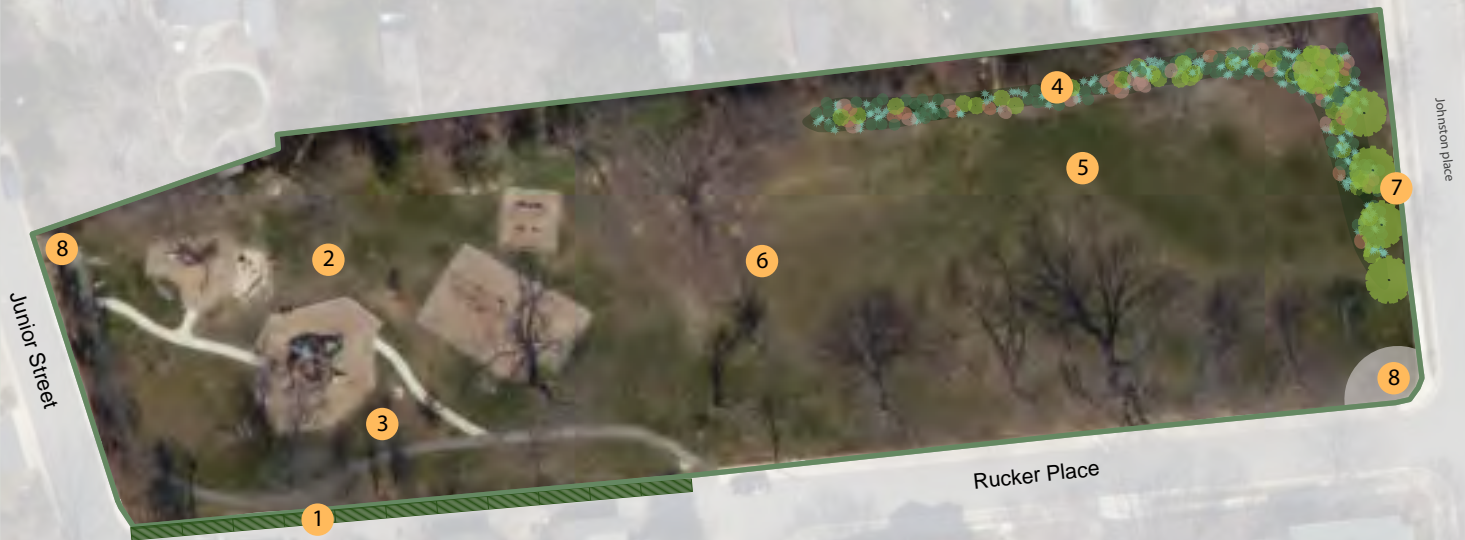


Beach Park

Improvement Recommendations

Draft (Spring 2015)

Commission endorsed on November 10, 2015
W. Masonic View Ave



1 Retrofit alley with green systems

Alleys provide an opportunity for green stormwater infrastructure. Their lower vehicle volumes lend themselves well to pervious pavement options such as grass-pave or recycled materials. A green alley would also serve as a transition from the right-of-way to the park and capture some of the rainwater before it enters the park.

2 Update existing playground and provide more equipment geared towards older children and natural play features

The current playground is standard playground equipment, mainly focused on ages 2-5. Community feedback indicated that there is a need for additional structures that interest older children and promote more imaginative play.

3 Improve drainage by the playground

Rainwater often causes ponding east of the playground. In combination with the green alley, a small yard drain will resolve this problem.

4 Install rain garden to capture water draining through the Park

The park slopes to the north causing all rain water to move that direction and then pond along the northern edge and the center of the field. A rain garden will serve as a basin to capture and then absorb the water. A drain may also be used to direct a portion of the rainwater to an overflow location in the event of heavy rains.

5 Re-grade turf and install irrigation system

The turf is currently in poor condition. Re-grading and soil will help control the drainage issues by diverting water toward the rain garden. Irrigation will help sustain the grass.

6 Remove amphitheater stairs while maintaining slope

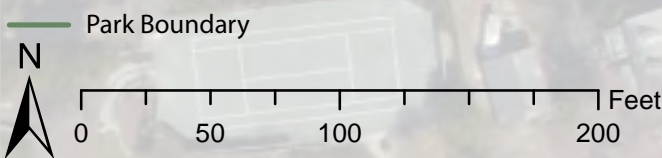
The amphitheater does not serve its intended purpose and is in poor condition. The community feedback indicated the desire to remove the stairs altogether and retain a hill for children to play on and sled down.

7 Remove wooden bollards and replace with trees

The existing wooden bollards prevent vehicles from entering the park but are in poor condition. Trees would serve the same purpose and also better absorb water in the existing swale.

8 Create entry plaza with park sign, trash can, benches, and bike racks

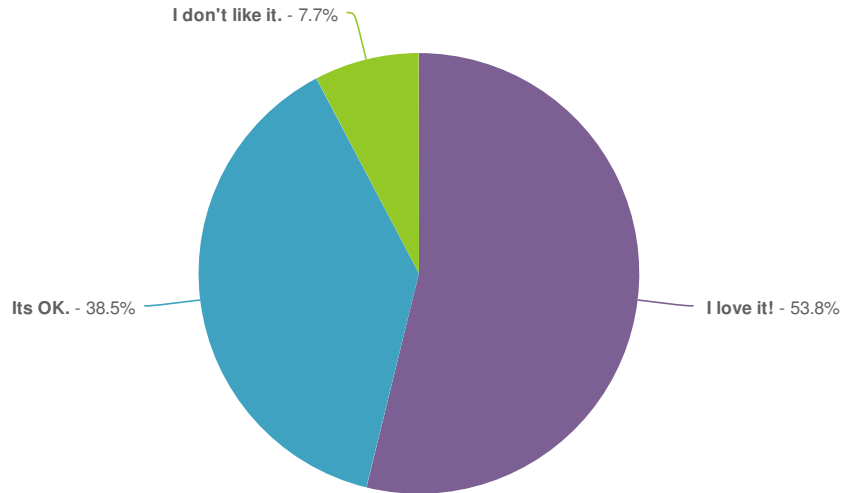
A new formalized entrance to the park would create a small space for a park sign, benches, and bike racks. The benches can become a social spot for all ages to relax. adjacent trees can add shade to the seating area.





Beach Park Draft Improvement Plan Survey Results, July 2015

What do you think of the following recommendations?-Create entry plaza with park sign, trash can, benches, and bike racks



Value	Percent	Count
I love it!	53.9%	28
Its OK.	38.5%	20
I don't like it.	7.7%	4
Total		52

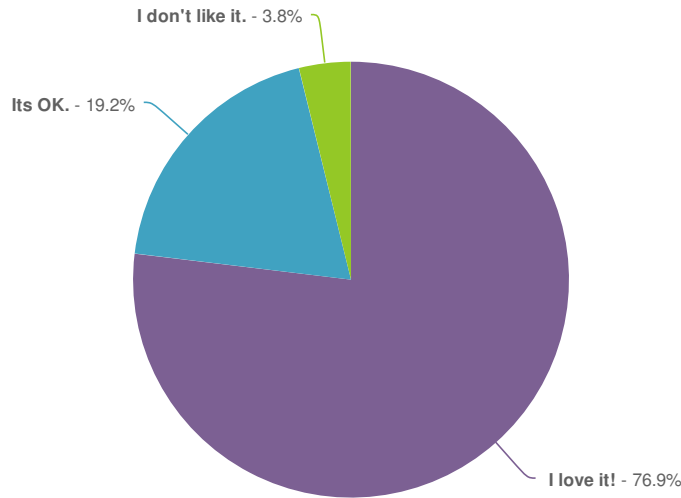
Explain-Create entry plaza with park sign, trash can, benches, and bike racks

Count	Response
1	Benches would be nice if new trees are maintained by the city, which I doubt.
1	Recycling cans, too!
1	Sounds very, very nice.
1	only lacks bike rack. trash rarely picked up
1	Would prefer benches further into the park (to watch the kids practicing soccer/sledding/ etc and to enjoy the park. Seems like potentially unused space
1	let us make it more friendly for pets as well. It makes no sense to me to have a child park with equipment next to a school with similar equipment
1	If you are attracting older children you need to consider how they might arrive - bikes, scooters and the like.

Count Response

1 Comment for beach park, and for parks in general-consideration to have benches situated so that they are conducive to conversation (two benches at 90 degree angles for instance, or facing each other) and under shade.

What do you think of the following recommendations?-Improve drainage by the playground



Value	Percent	Count
I love it!	76.9%	40
Its OK.	19.2%	10
I don't like it.	3.9%	2
Total		52

Explain-Improve drainage by the playground

Count Response

- 1 All drainage needs to be improved for the benefit of the community

- 1 Please do this. All of the runoff drains towards the Maury Playground

- 1 Problem not as bad as the whole sidewalk in front of Maury

- 1 The water issue is the most important factor in this park.

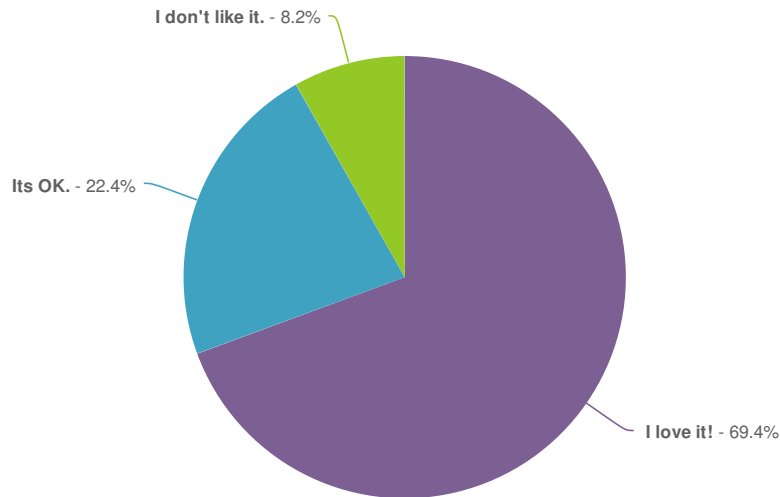
- 1 Would not want to see a grated storm drain

- 1 the playground is awful. plant trees!

- 1 The drainage problem is not confined to the playground; the whole park needs to be evaluated for drainage challenges; though they are worst around the children's areas.

- 1 Yes! The water run-off from Beach Park flows across the road at the bottom and floods the Maury Elementary school playground.

What do you think of the following recommendations?-Install rain garden to capture water draining through the park

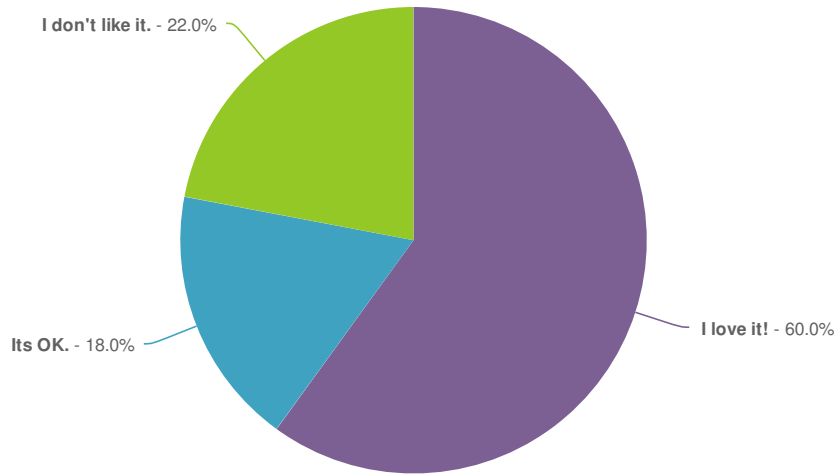


Value	Percent	Count
I love it!	69.4%	34
Its OK.	22.5%	11
I don't like it.	8.2%	4
Total		49

Explain-Install rain garden to capture water draining through the park

Count	Response
1	This is a great way to help drainage and educate
1	What will this do to drainage for homes?
1	Who will maintain the rain garden?
1	not sure what this means
1	yes but maintain the culvert, drainage intake and park in general
1	The city installed a swale. It does drain the water. . Maury School efforts were to incorporate pervious drainage on johnston street. The water does not flow over the curb into the johnston street. The Maury school project was to involve water features, and a rain garden on the slope to the playground.The swale is not a place for young children to play.
1	The plantings in the park, including the proposed rain garden and existing swales, would be good opportunities to remove invasive and add native plantings and signs.

What do you think of the following recommendations?-Re-grade turf an install irrigation system

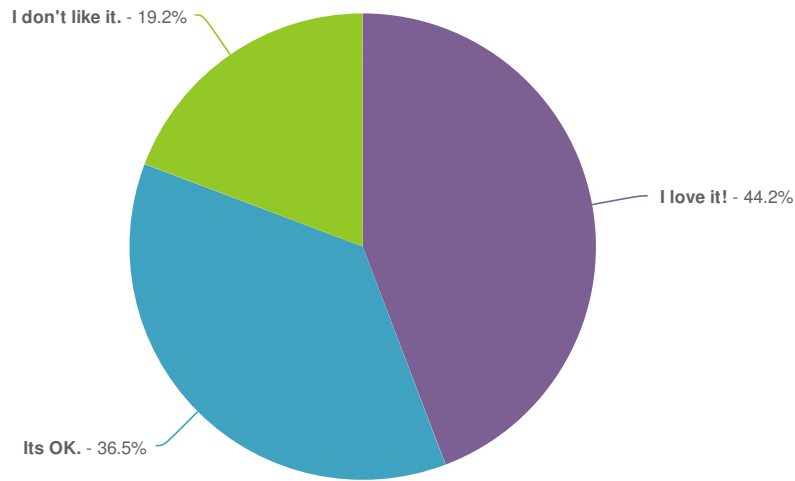


Value	Percent	Count
I love it!	60.0%	30
Its OK.	18.0%	9
I don't like it.	22.0%	11
Total		50

Explain-Re-grade turf an install irrigation system

Count	Response
1	Beach Park is popular for soccer and it needs better drainage and irrigation
1	Concerned an irrigation system would be a tripping hazard
1	Lets have a conversation of a dog park in Beach park.
1	Seems too expensive.
1	This park already has too much water!
1	do we really need to waste water that way
1	leave enough flat space for Alex Soccer mini u-5/6 field
1	Re turf, but we already have a problem with water issues in the park, and school yard. Beach park, is not a regulation soccer field.
1	irrigation really, RCPA can not even maintain the culvert let alone add a water source and maintain an irrigation system
1	Not sure if an irrigation system is needed; maybe yes, maybe no. Just mow it more regularly please during May-September.
1	Not sure irrigation is needed for turf to be OK. proper mowing height, and regrading to get rid of ponding water, should be sufficient once established.
1	Irrigation system sounds like something that will need to be maintained and is prone to breaking. Would prefer approach where rainwater provides natural irrigation but maybe that's not possible, hence the system suggestion.

What do you think of the following recommendations?-Remove amphitheater stairs while maintaining slope



Value	Percent	Count
I love it!	44.2%	23
Its OK.	36.5%	19
I don't like it.	19.2%	10
Total		52

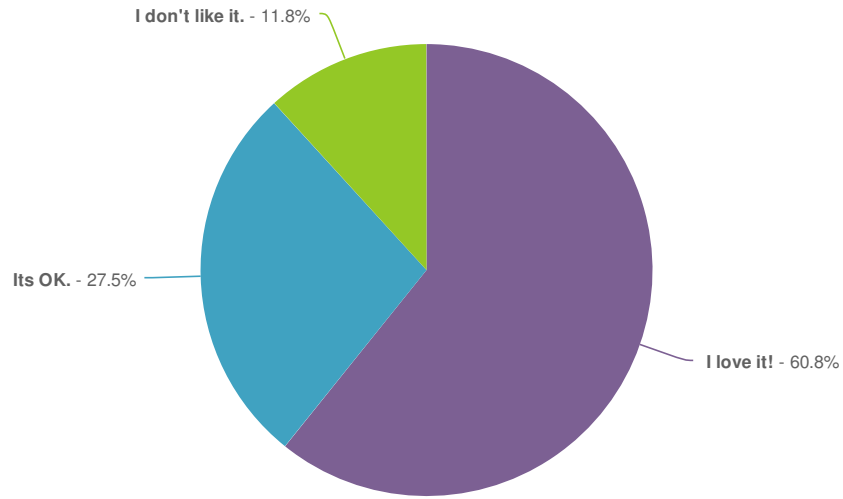
Explain-Remove amphitheater stairs while maintaining slope

Count	Response
1	As long as the slope remains for sledding!
1	Safer for winter sledding.
1	The amphitheater seats are useful during soccer games and other events.
1	When has the amphitheater been used - not since I have lived here (13 years and counting).
1	Yes, they have not had ANY repairs in 10 years. What is the deal.
1	if you keep the amphitheater we need programming for it
1	The cost to keep the amphitheater is not warranted for a few neighborhood activities that have not taken place for decades. People can sit on a hill.
1	I definitely recommend keeping the slope, but I would like the steps to be re-installed. The large steps make a fun seating area, and possibly would again be used as an outdoor theatre if it was redone. There is still opportunity to keep part of the slope without steps - like it is now, that can be used for playing/sledding.
1	This is a unique feature of the Neighborhood park. Yes, I do agree that the steps should be made safe, but they do provide a convenient seating area for groups. The boy scouts/Cub scouts utilize the area, as well as it could have been used by the Movie nights that the area does provide.
1	Also fine to leave some steps on area not used by kids for sledding, so have both amphitheatre (even if limited) and sledding area.

Count Response

1 Yes, thank you! Nobody uses the amphitheater to my knowledge, and kids get hurt on the stairs during te winter when sledding.

What do you think of the following recommendations?-Remove wooden bollards and replace with trees



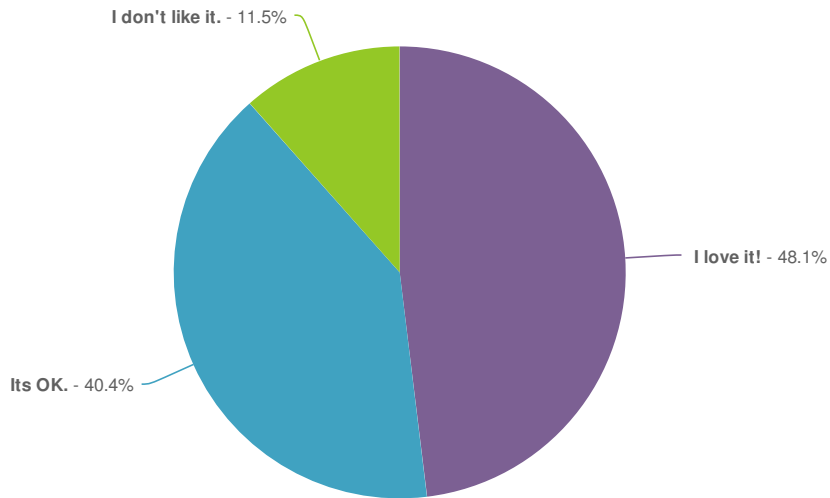
Value	Percent	Count
I love it!	60.8%	31
Its OK.	27.5%	14
I don't like it.	11.8%	6
Total		51

Explain-Remove wooden bollards and replace with trees

Count Response

- 1 Not sure if trees would help or complicate the already existing drainage / run-off problem?
- 1 Try to retain visibility to/from Maury to some extent.
- 1 there are only a few that have not rotted away.
- 1 City doesn't care for new trees, many die the first year or two. Witness across the street from Beach Park.
- 1 Yes, that area needs shade desperately (will also probably help the turf from drying out so quickly/negate need for add'l irrigation?)

What do you think of the following recommendations?-Retrofit alley with green systems

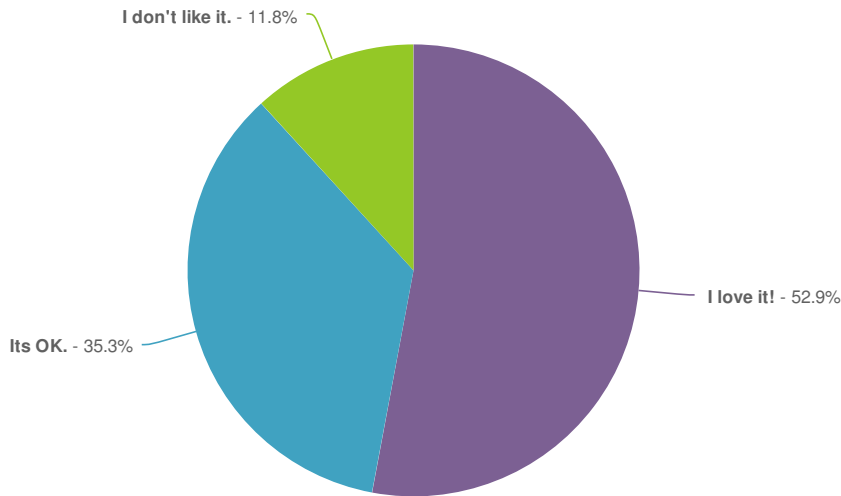


Value	Percent	Count
I love it!	48.1%	25
Its OK.	40.4%	21
I don't like it.	11.5%	6
Total		52

Explain-Retrofit alley with green systems

Count	Response
1	Alley is super ugly and takes away from park. Great ideas suggested here
1	Alleys are part of the charm of our neighborhood
1	As long as it does not interfere with vehicular traffic
1	General rerouting of downspouts would help tremendously. maybe a trench drain.
1	I think this will be too expensive...
1	Need to add in a walkway
1	Important to still have signage/differentiation that this is vehicular so children do not assume it is completely safe and free of cars
1	retrofi Johnston place street with the same qualities. Since the survey mentions eco friendly then may we also discuss the englis http://www.fairfaxcounty.gov/nvswcd/newsletter/englishivy.htm . https://www.alexandriava.gov/uploadedFiles/recreation/parks/Ins
1	There's too much cut through traffic; the alleyway retrofit should be done with the expressed aim to discourage such cut through. interface between public and private property.

What do you think of the following recommendations?-Update existing playground and provide more equipment geared towards older children and natural play features



Value	Percent	Count
I love it!	52.9%	27
Its OK.	35.3%	18
I don't like it.	11.8%	6
Total		51

Explain-Update existing playground and provide more equipment geared towards older children and natural play features

Count Response

- 1 Big kids have the school playground. Little kids need this more.

- 1 I don't feel this is critical.

- 1 PLEASE review the plans of Maury Elementary that include playspace for older kids.

- 1 Please keep the sandbox!!!

- 1 Mainly I would prefer that the placement of the/any equipment not be arbitrary but rather placed smartly and unlike an alien spaceship random landing site. To that point, can we have aesthetically appealing equipment such as what now is alongside the RR tracks along the perimeter park south of Potomac Yards?

- 1 Maury's Park is right there. Even though my son will outgrow Beach Park soon it has been wonderful for the younger kids. The older kids can play right at Maury.

- 1 I second the appeal of a zip line for older kids. we could really use one in the city. and the net climbing structures are pretty good as well, if they are high enough, for older children. it would be great to have some options like that for children who age out of playgrounds....

- 1 This is more important since the refurbishment of Blue Park (Hooffs Run) which is now more younger.

- 1 OK but would also like to see add'l trees in the mix to provide shade. Problem with most parks are lack of shade. New park by Potomac Yard? Nice equipment: zero shade. New park @ Hoofs Run? Nice equipment: nice shade by benches, no shade for children playing on equipment.

Count	Response
1	Keep the sandbox! Take advantage of the large spaces near the play equipment, perhaps have different play "stations"
1	older kids above 12 do not spend much time at playgrounds. Natural feature would appeal to ALL ages. Logs, boulders, stepping stones.
1	I think the playground equipment is fine and provides plenty of options for kids of all ages. Use all the money toward the horrible drainage issues!
1	The Maury Schoolyard will have a plaza, and lots more space for people of all ages, including walking path, shade areas, rain gardens. The current Rosemont Citizens Association members are turning over the 4th of July this year. We have found a replacement at this last minute, but there is not a group of local organizers in place to manage other events. Oktoberfest has not taken place for the 15 years I have lived here adjacent to the park. I agree that the schoolyard will change the nature of the property and that it should be considered when making changes to Beach Park. Older children do not generally enjoy "play equipment" Put in soccer goals or lacrosse nets or a zip line or tire swing. But thinking play equipment for the tween and teen crowd is really not an answer. The play equipment at Beach Park is not inspiring or particularly fun. For the smallest kids 5 and under its a popular meeting place. But beyond that its mostly used by kids when there is a sibling in an organized activity on the lower Beach Park Field. The culvert is in terrible shape, there has been virtually NO Maintenance on the park for 10 years since the pay equipment was replaced. Two tree planting have happened after I worked with the city arborist directly and watered them myself through two different summers.

Do you feel all of the comments were heard and addressed in the draft Beach Park plan? If not, what is missing and how can we make the plan better?

Count	Response
1	Appreciate the opportunity to commen
1	Dog parks, in connection with hoofs run
1	Education plan on invasive ivy, along with some of the magnificent trees in place.
1	Enclosed area for toddlers
1	I would like more details about how the play structures will be changed.
1	Indeed! This has been a well-organized, communitive and communal venture!
1	Install benches facing west so we can get afternoon and evening sun.
1	Unsure
1	Water drainage into Maury's playground is the most pressing concern
1	Why not rebuild the amphitheater for local use?
1	Yes! Please make these changes! Thanks!
1	Yes, thank you
1	You're doing great.
1	lack or recognition of the great number of neighbors who use the park with their pets
1	APPEARS TO BE A DEMAND FOR AN OUTDOOR COMMUNITY SETTING/PLAYSPACE FOR ADULTS WHICH THE CITY SHOULD FIND A WAY TO MEET

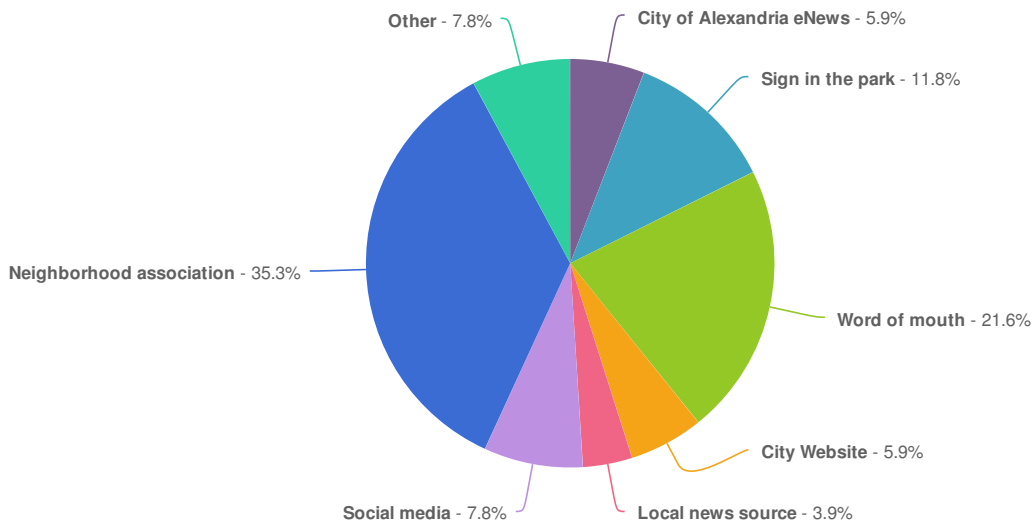
Count Response

-
- 1 I would also like to see more sun and shade coverage and playground equipment for infant and toddlers. Also water fountains for drinking water and maybe recycling and composting bins in addition to trash. It would also be great to add a small children's natural habitat area like a butterfly garden and other outdoor learning areas. Also places to sit for caregivers or a picnic area.
-
- 1 I would make sense for Beech Park to be connected to Maury Playground in some way. It would be much larger neighborhood park.
-
- 1 Care should be taken to ensure that the French drain system at the bottom of the park is redesigned to improve its function with the proposed rain garden.
-
- 1 It's okay...the drainage / storm water run-off seems to be the greatest problem at Beach Park to my knowledge.
-
- 1 There was also a suggestion to add electricity to the park so that the Rosemont Fourth of July Festival and other events could use amplified sound and/or moon bounces, etc. when there was an event. (The person making this suggestion did note that the immediate neighbors might object to this, and suggested that Parks & Rec contact the neighbors before acting on this.) Yes Electricity would be nice but there is not any parking or restrooms or other services that would make it a good location for anything but a small neighbor gathering.
-
- 1 One thing that could be done in lieu of replacing the amphitheatre which appears to engender minimal usage, is to do what was done at the BHCP playground, which is to place medium-sized boulders embedded in the hillside on which folks could sit. If there aren't that many events, maybe 2 or 3 rows would be sufficient. Older kids might enjoy that natural feature in an open-ended way. You can also place downed trees, hollow tree sections, and as Sue mentioned, things that offer more adventure such as zip lines and trapeze nets – if you felt there were a need. I saw features like these at an eco lodge where we stayed in Yosemite and they looked very appealing. I think I sent Judy those images. But for kids much older than 10 or 11, they really need an adventure playground. Woo hoo let's do it in Alexandria – just not at Beach Park!
-
- 1 For the most part I thought the comments were pretty comprehensive. I'd add that there are opportunities to remove invasive plants along the drainage swale and replace with native plantings and/or a rain garden. I enjoyed efforts to add some signage about ground bees for education - - I think that could be done with plantings so folks can learn about native plants and wildlife habitat. maintenance of trees/plants is also needed. if city can't do it, maybe ask for neighbors to team up, possibly we could get some help from city? Second, I have a dog and the park space is essential. some separate dog waste trash cans would be good, and possibly bags when people forget. but good to have turf and edge the park with shrubs, etc. so that there are some spaces where they can play off lead when people aren't there (such as early morning).
-
- 1 RCA sent the wrong url a couple of times but w/out them I wouldn't have known about this survey. I saw the plan posted in the park but didn't see the survey opportunity.
-
- 1 need photo of play equipment - coordinate with the play equipment at Maury Elem and their const schedule so both sites are closed at the same time
-
- 1 The water drainage from this park is a huge issue for the area, particularly the Maury playground. All resources for this park should focus on fixing this problem so no water ends up leaving the park and destroying the surrounding areas and the school below it.
-
- 1 Signs for children not to use wooded areas for bathroom purposes. Signs to dispose of dirty diapers in trash cans. Dog play area.
-
- 1 Toddler appropriate equipment is still needed There should be plenty of older childrens equipment available at the new Maury playground. Little ones not in school yet need something to play with during school hours
-
- 1 Appreciate responsiveness to the drainage issues, which are the main problem and currently make more than half the park unusable. Play ground equipment is in ok shape as is.
-
- 1 One problem with this park is that a number of people use it as an off-leash dog exercise area. Please discourage that. Also, the path is nice, perhaps add a few more.

Count Response

1	PLEASE look at the neighborhood as a whole. Beach Park abuts Maury Elementary. Please be sure not to duplicate the spaces with climbing structures, Make use of Beach Park as a Park. Natural Play space with shade and slope and place to relax. NO need for disneyland at every park. Remove the climbing structure, plant some gardens and trees and maintain the culvert. That would be a significant improvement.
1	MAINTENANCE! Please do not spend money on water management and drainage without then maintaining the park. The culvert is entirely overgrown, trees not maintained, the amphitheater rotten, field never aerated or overseeded....MAINTENANCE
1	I use Beach Park a lot to walk through, but am not familiar with specifics re: drainage/alley issues. I think draft plan does fabulous job of keeping what most persons love about park (big green open space).

How did you learn about the Neighborhood Park Plan survey?



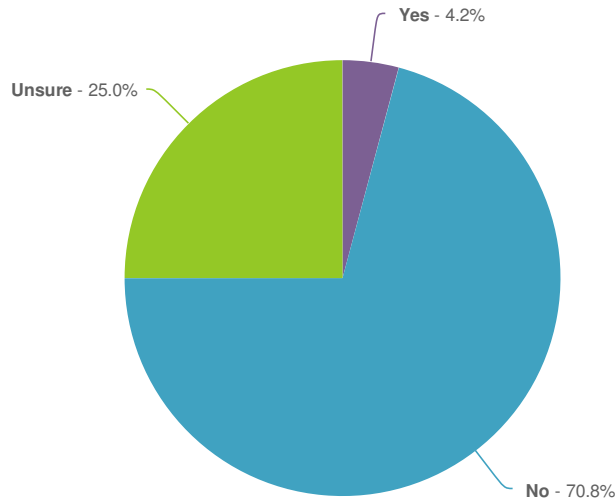
Value	Percent	Count
City of Alexandria eNews	5.9%	3
Sign in the park	11.8%	6
Word of mouth	21.6%	11
City Website	5.9%	3
Local news source	3.9%	2
Social media	7.8%	4
Neighborhood association	35.3%	18
Other	7.8%	4
Total		51

Responses "Other"	Count
Left Blank	54
Maury PTA meeting	1

Maury school listserv

1

Will you be attending the workshop on May 27 from 7pm-8:30pm at the Mount Vernon Recreation Center to discuss the draft plan?



Value	Percent	Count
Yes	4.2%	2
No	70.8%	34
Unsure	25.0%	12
Total		48

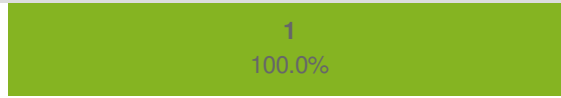
How many members of your household are in the following age groups?

	# in household	Responses
Under 5	20 100.0%	20
6-12	19 100.0%	19
13-18	7 100.0%	7
19-29	2 100.0%	2
30-49	35 100.0%	35
50-69	17 100.0%	17

in household

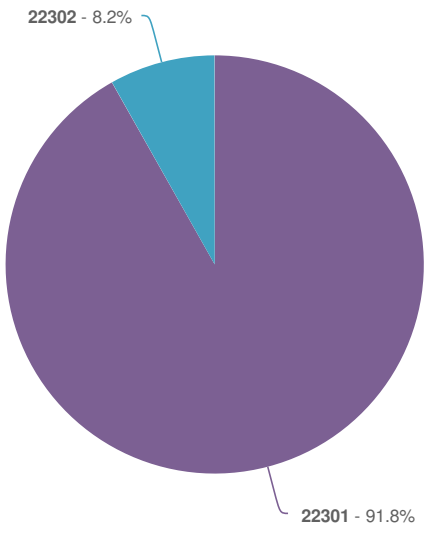
Responses

70 or above



1

What is your zip code?



Value	Percent	Count
22301	91.8%	45
22302	8.2%	4
Total		49

Statistics	
Sum	1,092,753.0
Average	22,301.1
StdDev	0.3
Max	22,302.0

Responses "I live outside of Alexandria"

Left Blank

Count

56

What is the primary language spoken in your home?