

Lynhaven Gateway Park

History and Character

Lynhaven Gateway Park is located at 101 Lynhaven Drive in the Lynhaven neighborhood. There are no documented

The park is 0.12 acres and is best identified by the stone studded mounds that line the path that stretches throughout the park. The community commonly calls this park "Rock Park". The park also features benches, a Little Free Library, and a number of shade trees. There is a small amount of grass and landscaping along the edges of the park. The park has been adopted by the Lynhaven Civic Association, who also maintain the Little Free Library. The park is a popular community gathering spot for neighbors and families.

Tree roots have created some uneven portions of the concrete sidewalk. There are small lights in the park that are owned and maintained by Dominion Virginia Power. The rock mounds are difficult to maintain and can make the park space limited for community gatherings.

Existing Conditions Map



Lynhaven Gateway Park

Which of the following existing park elements would you like to preserve, enhance, or transform?

Element	Park sign		Element	Lights	
Number of responses	36		Number of responses	36	
Value	Count	Percent	Value	Count	Percent
Preserve it	14	39	Preserve it	12	35
Enhance it	17	47	Enhance it	18	53
Transform it	5	14	Transform it	4	12

Element	Benches		Element	Paths	
Number of responses	36		Number of responses	36	
Value	Count	Percent	Value	Count	Percent
Preserve it	11	30	Preserve it	10	30
Enhance it	19	53	Enhance it	11	33
Transform it	6	17	Transform it	12	37

Element	Landscaping		Element	Little Free Library	
Number of responses	38		Number of responses	35	
Value	Count	Percent	Value	Count	Percent
Preserve it	3	8	Preserve it	28	80
Enhance it	10	26	Enhance it	6	17
Transform it	25	66	Transform it	1	3

Element	Rock area	
Number of responses	38	
Value	Count	Percent
Preserve it	5	13
Enhance it	5	13
Transform it	28	74

What is currently NOT in the park that you would like to see there?

1. Grass, safe space for children to play
2. Green space
3. Drinking water fountain
4. Community bulletin board and green space. Additionally – BIG deal – safe access. At minimum, painted crosswalks at the intersection leading to the park. There are none and while sitting in the park we see motorists barely roll stop at the intersection.
5. Some covered/sheltered area, more green space in middle not just edges
6. Landscaping, specifically in the way of a natural pollinator flower garden. Not just standard landscaping to make it look pretty. But to both look pretty and to help pollinators.
7. Grass,
8. A gazebo
9. Better seating for community gatherings
10. Green space
11. It's so strange...just big rock mounts. We have such an eclectic neighborhood with 8-10 events a year, but the rock mounds don't seem like a great use of space?
12. Benches, picnic table or two

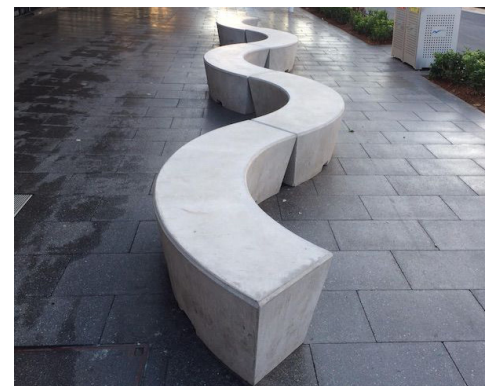
Community Feedback

In Fall 2018, staff collected community feedback to understand how the park is used and how it could be improved in the future. The following information summarizes what we heard through an online survey and community workshop. Over 400 people responded to the survey in total, 42 of which were specific to Lynhaven Gateway Park. Staff used the collected information to develop the draft park plans.

In 10 years, I would like this Park to...

(Top 3 rankings shown, based on a weighted score)

1. *Be a place to create social connections with neighbors*
2. *Help reduce environmental impacts from urban surroundings*
3. *Be a safe place for children to explore*



The image on the right is an example of a curved bench. Curved benches allow users to face each other when talking instead of sitting side-by-side, this helps facilitate social interactions and aids in the communications of people with hearing impairments.

Lynhaven Gateway Park

Which of the following existing proposed park elements do you love, like, or not like?

Recommendation Park welcome sign			Recommendation Kiosk		
Number of responses 26			Number of responses 25		
Value	Count	Percent	Value	Count	Percent
I love it!	13	50	I love it!	8	32
I like it	11	42	I like it	9	36
I don't like it	2	8	I don't like it	8	32

Recommendation Rubberized mounds			Recommendation Rocks around park		
Number of responses 25			Number of responses 26		
Value	Count	Percent	Value	Count	Percent
I love it!	11	44	I love it!	9	35
I like it	11	44	I like it	9	35
I don't like it	3	12	I don't like it	8	31

Recommendation Little Free Library			Recommendation Story time area		
Number of responses 26			Number of responses 24		
Value	Count	Percent	Value	Count	Percent
I love it!	12	46	I love it!	6	25
I like it	9	35	I like it	14	58
I don't like it	5	19	I don't like it	4	17

Recommendation Power source			Recommendation String lights		
Number of responses 26			Number of responses 25		
Value	Count	Percent	Value	Count	Percent
I love it!	16	61	I love it!	16	64
I like it	8	31	I like it	4	16
I don't like it	2	8	I don't like it	5	20

In the summer of 2019 RPCA staff collected community feedback on the draft recommendations for improving this pocket park. The following information summarizes what was heard through online surveys and community feedback (see appendix for full results). Over 700 responses were collected in total, 26 of which were specific to Lynhaven Gateway Park.

Based on information from the summer input phase, staff updated the plan to best represent current and future community needs. The community outreach for Lynhaven Gateway Park resulted in an unclear direction for what the community wanted to see done for the park. RPCA staff attended a Lynhaven Gateway Civic Association meeting and held a work session to identify a path forward for the park plan. The work session resulted in several changes to the draft plan. These include preserving some of the rock mounds, while removing others to create an open space for community events; removing the boulder border and replacing it with landscaping making the park feel less sterile; removing the story time area and adding movable seating, as well as curved benches to encourage social interactions; and removing the shade structure because the park has enough shade with the existing trees.

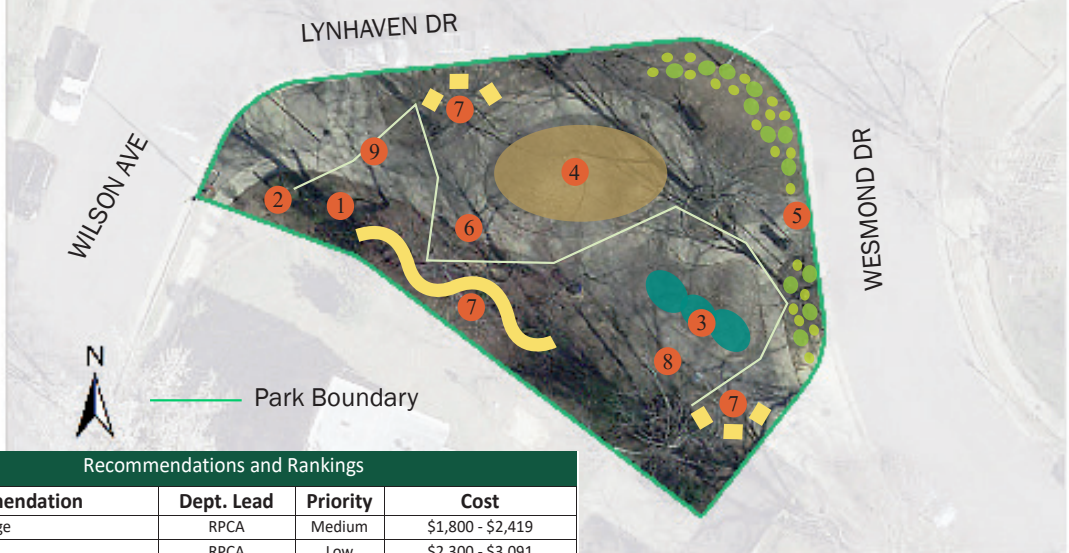
Improvement Recommendations

- Update park signage**
The existing park welcome sign will be updated to the current standard.
- Add a kiosk**
A kiosk will provide space for community and park notices.
- Install rubberized play surface mounds**
This plan recommends removing the 5 existing rock mounds and in place of 3 of the existing rock mounds installing 3 rubberized play surface mounds. These rubberized play surface mounds will continue to provide a play area for children in the park on a safer play surface.
- Create an open plaza area**
This plan recommends removing the 5 existing rock mounds and in place of 2 of the rock mounds creating an open plaza with a shade/rain cover to be used during community gatherings.
- Install rocks/boulders around the park**
The community calls this park "Rock Park". Installing rocks or small boulders around the edge of the park will help define the space, create additional seating opportunities during community gatherings, and maintain rocks in the park.
- Add a second Little Free Library**
There is an existing Little Free Library in the park that is very popular. Community feedback indicated that a second Little Free Library focused on children's books.
- Create a story time area**
This plan recommends creating a space with small boulder or tree stump seating to be used for story time. The features are meant to be used by both children and adults located near the fence and away from roads.
- Install a power source**
The community has a long history of using this park for neighborhood events. A power source will provide electricity for the events.
- Add string lights**
Community feedback indicated a desire to have more lights in the park during the winter, to ensure these lights aren't too bright, and to enhance the park as a community gathering spot. Installing string lights would provide additional lighting, particularly in the winter months when the sun sets earlier, without creating bright light that would disturb neighbors. The string lights would also enhance the appearance of the park for community gatherings.

Lynhaven Gateway Park

Improvement Recommendations

- 1 Update park signage**
Update the existing park welcome sign to the current City standard.
- 2 Add a kiosk**
Add a kiosk. A kiosk provides a space for community and park notices.
- 3 Update surface mounds**
Remove two existing rock mounds and preserve three existing rock mounds, in a line, forming one ripple through the park. These surface mounds will continue to provide a play area for children and a community gathering space in the park.
- 4 Create an open plaza area**
Level central area of the park to create an open plaza area. Repair sidewalks and surrounding area.
- 5 Install landscaping and rocks/boulders around the park**
Create a landscaped border around the edge of part of the park to help define the space.
- 6 Add a second Little Free Library**
Add a second Little Free Library focused on children's books.
- 7 Create multi-generational social seating**
Create multi-generational social seating using moveable chairs and curved benches to create a social spot for all ages.
- 8 Install a power source**
The community has a long history of using this park for neighborhood events. Install a power source to provide electricity for the events.
- 9 Add string lights**
Community feedback indicated a desire to have more lights in the park during the winter. Install string lights to provide additional lighting without creating bright light that would disturb neighbors. The string lights enhance the appearance of the park for community gatherings and are on a timer that corresponds with the park hours.



Recommendations and Rankings

#	Recommendation	Dept. Lead	Priority	Cost
1	Park signage	RPCA	Medium	\$1,800 - \$2,419
2	Kiosk	RPCA	Low	\$2,300 - \$3,091
3	Surface mounds	RPCA	Medium	\$800 - \$1,075
4	Open plaza area	RPCA	High	\$19,200 - \$25,285
5	Landscaping and boulders	RPCA	Medium	\$4,000 - \$5,376
6	Little Free Library	RPCA	Low	\$1,600 - \$2,150
7	Multi-generational social seating	RPCA	High	\$28,000 - \$38,000
8	Power source	RPCA	Medium	\$20,000 - \$26,878
9	String lights	RPCA	Low	\$2,800 - \$3,763