

# Interior Park

## History and Character

Interior Park is located at 1321 Oronoco Street in the West Old Town neighborhood. There are no documented historic sites within the park.

The 0.39 acre park features an asphalt slab in the center of the park which is surrounded by benches, small trees, grass, and some planting beds. The park is located in the middle of a city block, with four alleyways leading up to the park, surrounded by town homes and parking. The alleyways from Pendleton Park lead to Interior Park. There is no official signage for the park from the street.



## Existing Conditions Map



# Interior Park



*The image above is an example of a green alley. Green alleys are a form of green infrastructure that uses permeable pavement that mimics natural conditions to capture, filter, and slow down stormwater runoff before it enter the sewer system.*

## Community Feedback

In Fall 2018, staff collected community feedback to understand how the park is used and how it could be improved in the future. The following information summarizes what we heard through an online survey and community workshop. Over 400 people responded to the survey in total, 5 of which were specific to Interior Park. Staff used the collected information to develop the draft park plans.

## In 10 years, I would like this Park to...

(Top 3 rankings shown, based on a weighted score)

*\*survey responses were limited for this park*



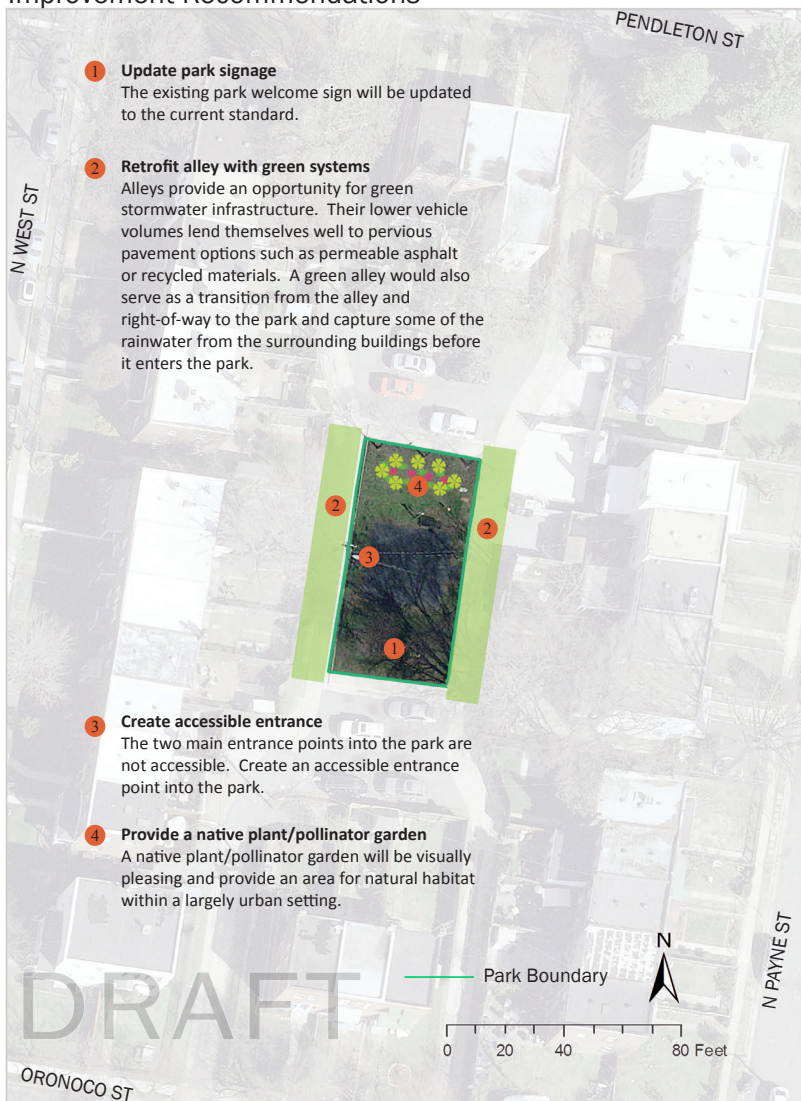
# Interior Park

Which of the following existing proposed park elements do you love, like, or not like?					
<b>Recommendation</b>	<b>Park welcome sign</b>		<b>Recommendation</b>	<b>Green systems</b>	
Number of responses	5		Number of responses	6	
<b>Value</b>	<b>Count</b>	<b>Percent</b>	<b>Value</b>	<b>Count</b>	<b>Percent</b>
I love it!	4	80	I love it!	4	67
I like it	1	20	I like it	2	33
I don't like it	0	0	I don't like it	0	0
<b>Recommendation</b>	<b>Entrance</b>		<b>Recommendation</b>	<b>Native plants/garden</b>	
Number of responses	5		Number of responses	6	
<b>Value</b>	<b>Count</b>	<b>Percent</b>	<b>Value</b>	<b>Count</b>	<b>Percent</b>
I love it!	3	60	I love it!	6	100
I like it	2	40	I like it	0	0
I don't like it	0	0	I don't like it	0	0

In the summer of 2019 RPCA staff collected community feedback on the draft recommendations for improving this pocket park. The following information summarizes what was heard through online surveys and community feedback (see appendix for full results). Over 700 responses were collected in total, six of which were specific to Interior Park.

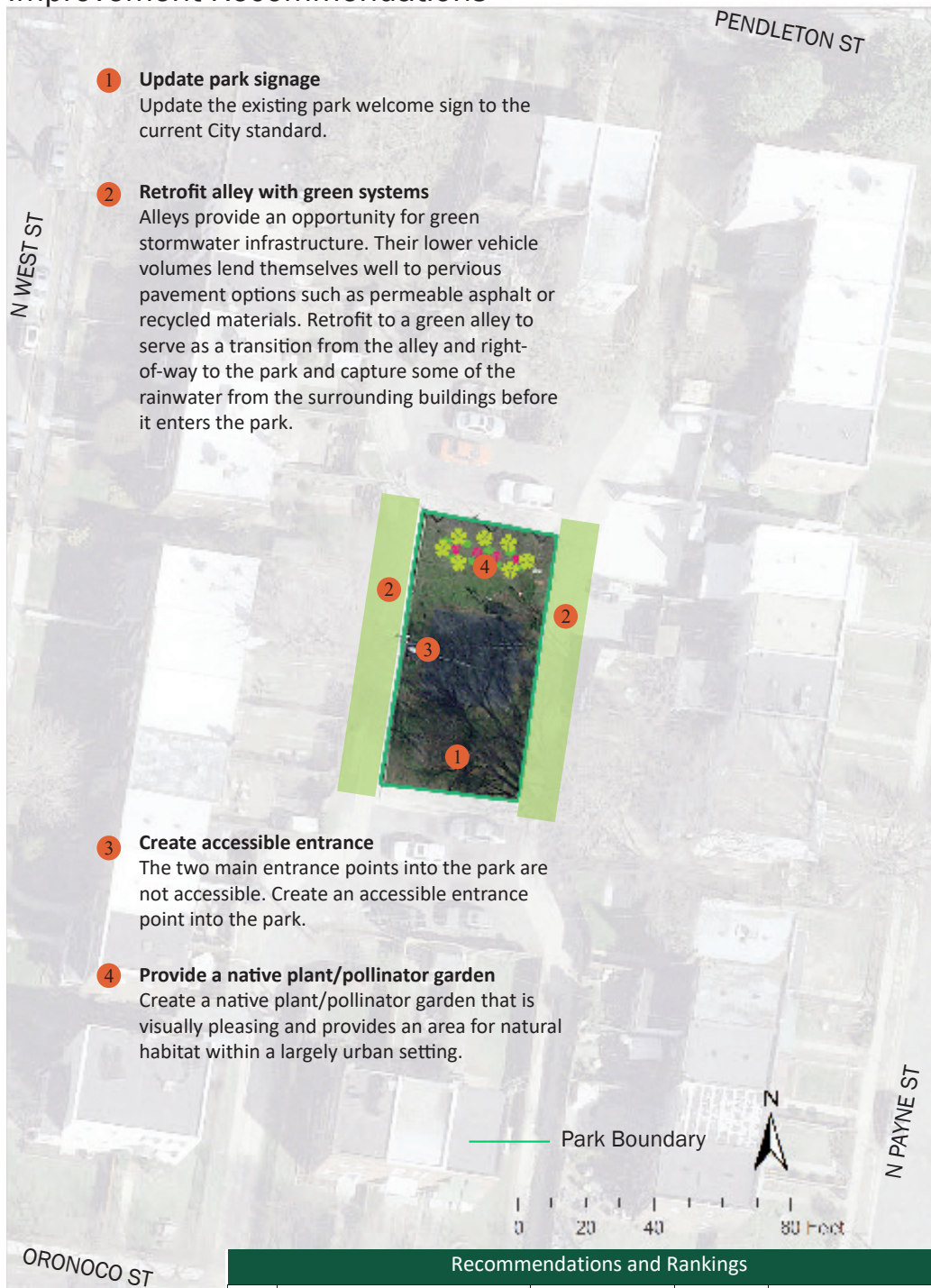
Based on information from the summer input phase, staff updated the plan to best represent current and future community needs. No major changes were made to the original draft plan.

## Improvement Recommendations



# Interior Park

## Improvement Recommendations



- 1 Update park signage**  
Update the existing park welcome sign to the current City standard.
- 2 Retrofit alley with green systems**  
Alleys provide an opportunity for green stormwater infrastructure. Their lower vehicle volumes lend themselves well to pervious pavement options such as permeable asphalt or recycled materials. Retrofit to a green alley to serve as a transition from the alley and right-of-way to the park and capture some of the rainwater from the surrounding buildings before it enters the park.
- 3 Create accessible entrance**  
The two main entrance points into the park are not accessible. Create an accessible entrance point into the park.
- 4 Provide a native plant/pollinator garden**  
Create a native plant/pollinator garden that is visually pleasing and provides an area for natural habitat within a largely urban setting.

Recommendations and Rankings				
#	Recommendation	Dept. Lead	Priority	Cost
1	Park signage	RPCA	Medium	\$1,800 - \$2,419
2	Green systems	RPCA/TES	Low	\$28,800 - \$38,705
3	Accessible entrance	RPCA	High	\$4,900 - \$6,585
4	Native plant/pollinator garden	RPCA	Medium	\$3,500 - \$4,704