

**Fort Ward Archaeology**  
**Stage I and IIA Excavations for Grave Identification**

**Conceptual Maps--**  
**To be finalized with survey data**

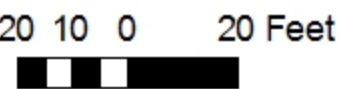
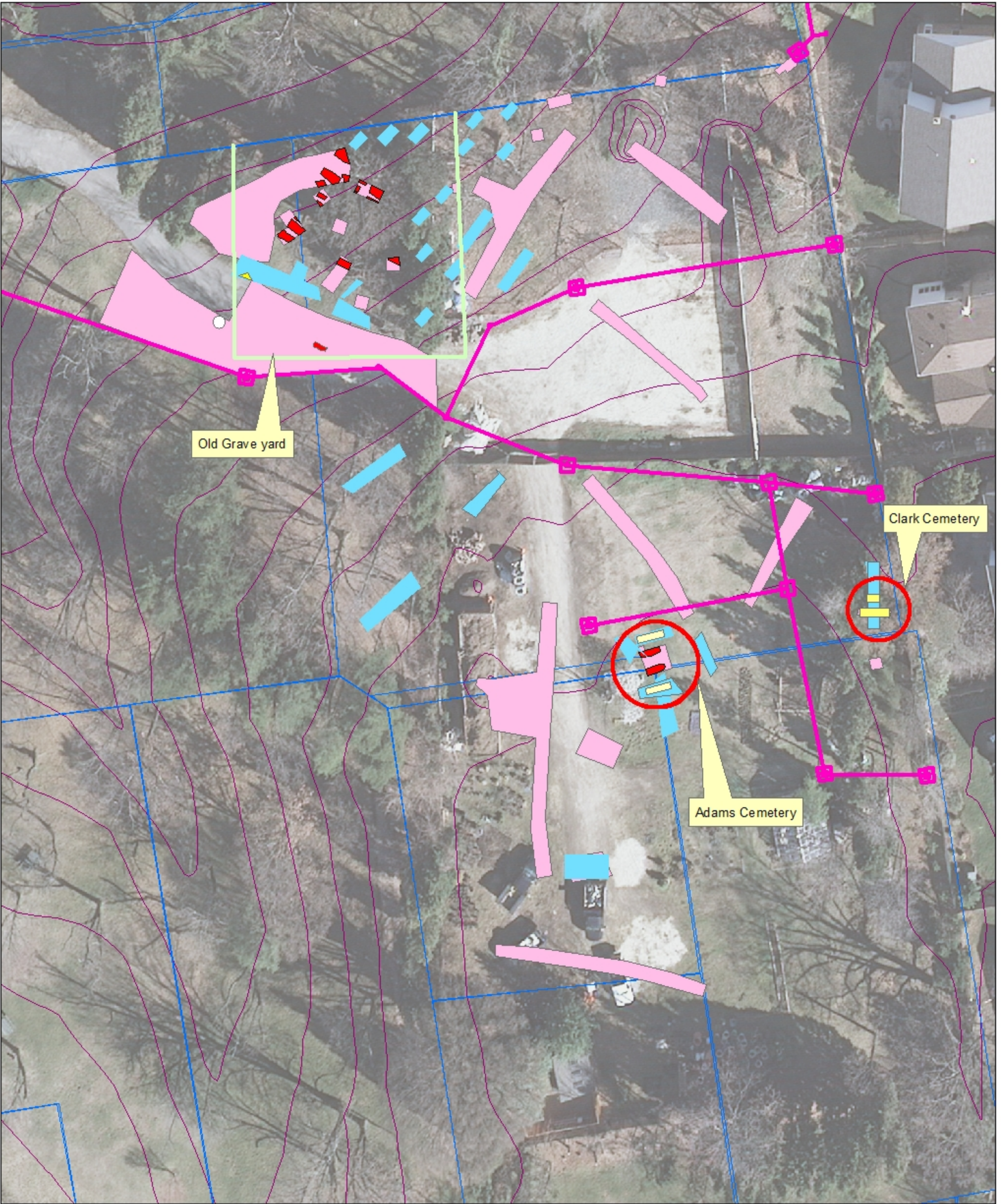
Prepared by Alexandria Archaeology  
City of Alexandria/Office of Historic Alexandria

Presented at the Fort Ward  
Stakeholders Advisory Group Meeting  
September 12, 2012





Old Grave Yard,  
Adams and Clark Cemeteries  
Grave Identification Excavations



- Stage I Trenches
- Stage IIA Trenches
- Stage I/IIB Burials
- Stage IIA Burials
- Dog Burial
- Excavation to Clear Area for Cemetery Fence or Demarcation
- Grave Areas
- Archaeological Research Lots
- Two-foot contour

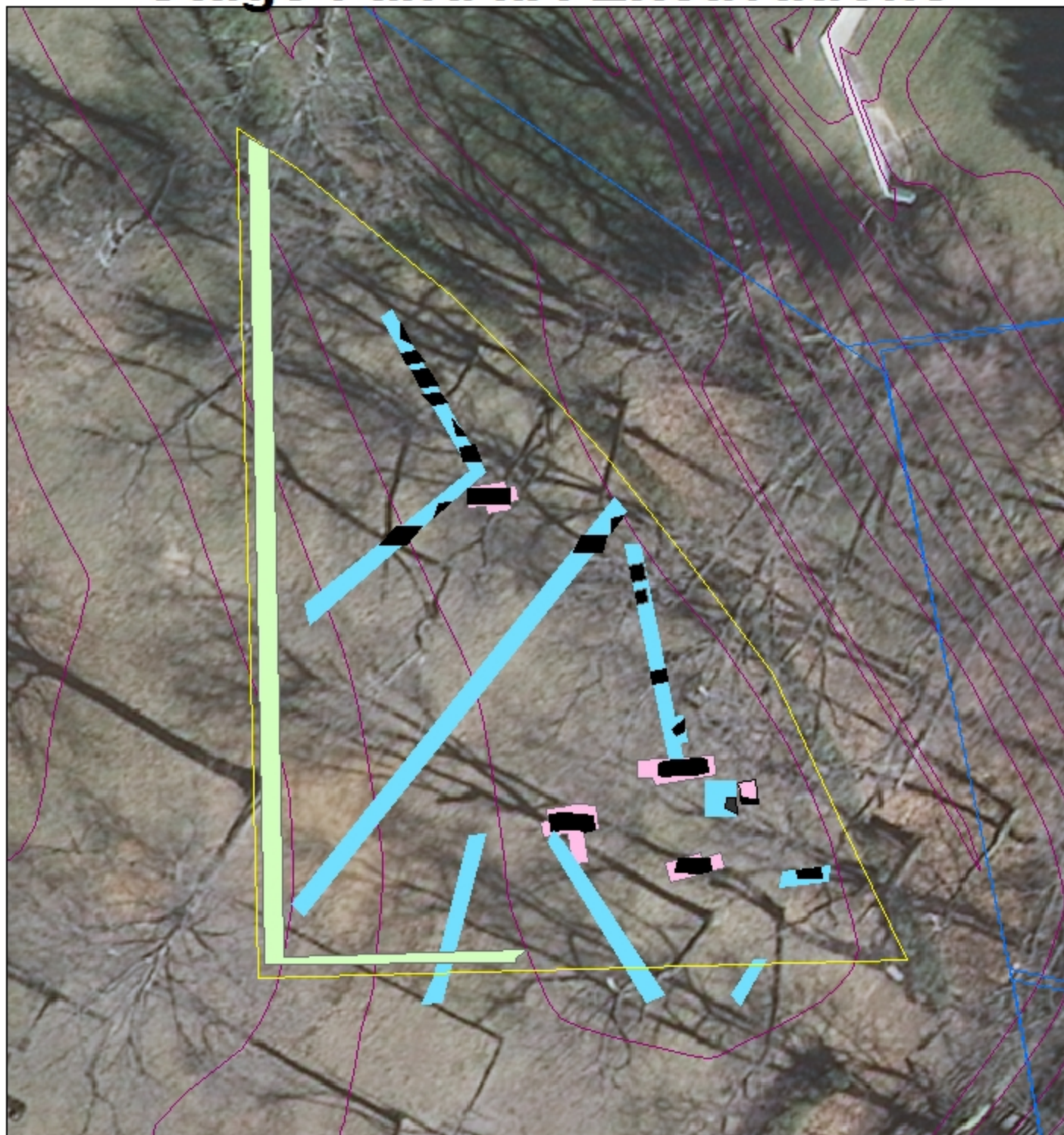
Source: City of Alexandria 2009 Aerial  
GIS Layers Created by Alexandria Archaeology and The Ottery Group, Inc.  
City of Alexandria, Office of Historic Alexandria/Alexandria Archaeology

Conceptual Map-- To be finalized with survey data



# Jackson Cemetery

## Stage I and IIA Excavations



10 5 0 10 Feet



Source: City of Alexandria 2009 Aerial  
GIS Layers Created by Alexandria Archaeology and The Ottery Group, Inc.

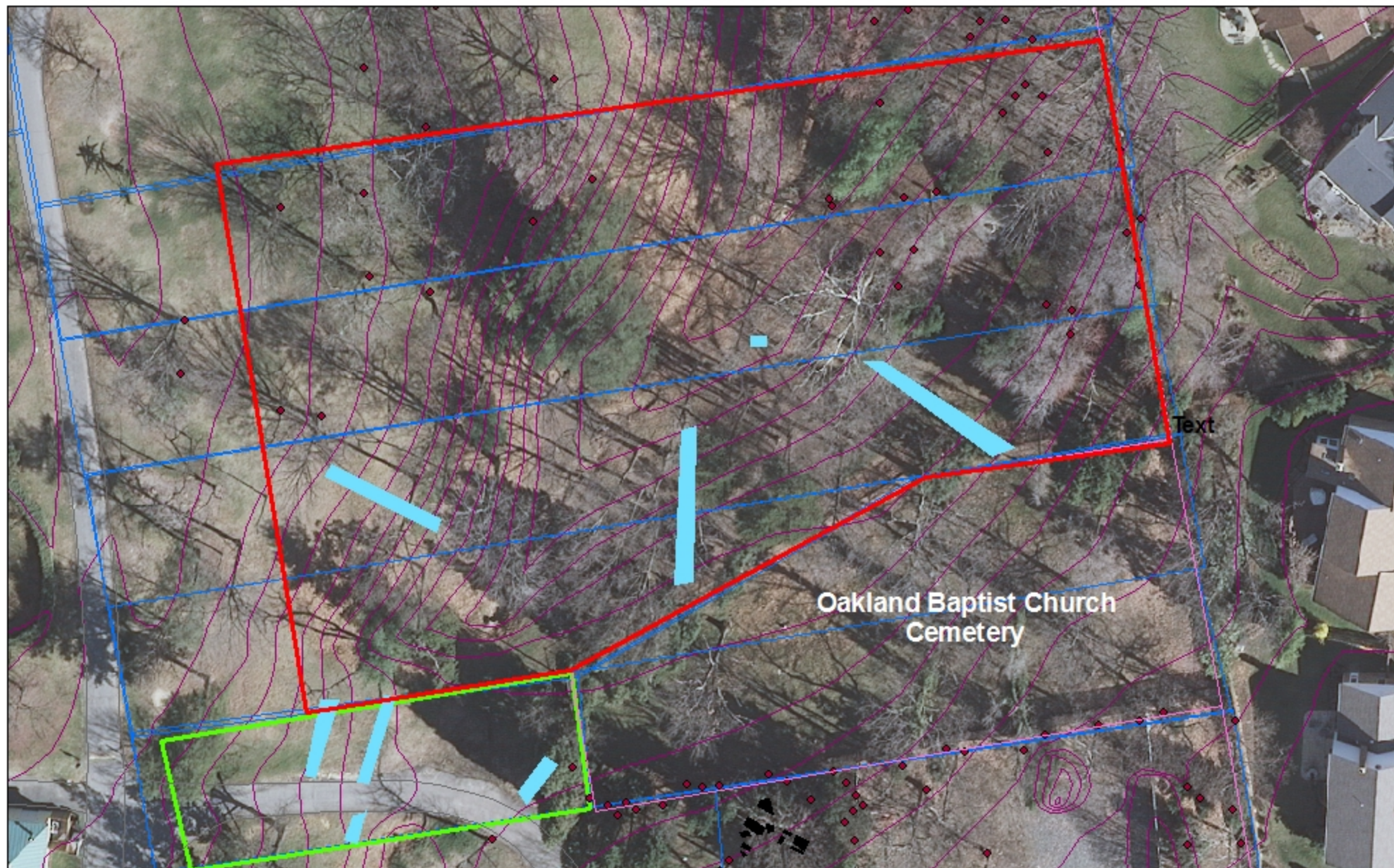
City of Alexandria/Office of Historic Alexandria/Alexandria Archaeology

**Conceptual Map-- To be finalized with survey data**

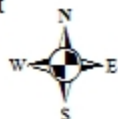
	Cemetery Identification Area
	Stage I Trenches
	Stage IIA Trenches
	Identified Grave Locations
	SAT Excavation to Clear Area for Cemetery Fence or Demarcation
	Archaeological Research Lots
	Two-foot Contour



# Lots North and West of Oakland Cemetery Excavations for Grave Identification



30 15 0 30 Feet



Conceptual Map—  
To be finalized with survey data

<span style="border: 2px solid red; display: inline-block; width: 20px; height: 10px;"></span>	North of Oakland Grave Identification Area—potential based on oral history accounts
<span style="border: 2px solid green; display: inline-block; width: 20px; height: 10px;"></span>	West of Oakland Grave identification Area—part of Javins lot deeded to Oakland for cemetery use
<span style="border: 2px solid blue; display: inline-block; width: 20px; height: 10px;"></span>	Stage IIA Trenches
<span style="border: 2px solid lightblue; display: inline-block; width: 20px; height: 10px;"></span>	Archaeological Research Lots

Source: City of Alexandria 2009 Aerial  
GIS Layers Created by Alexandria Archaeology  
and The Ottery Group, Inc.

City of Alexandria/Office of Historic Alexandria/  
Alexandria Archaeology



# McKnight/Good Samaritant Lot

## Stage IIA Excavations for Grave Identification



10 5 0 10 Feet



Source: City of Alexandria 2009 Aerial

GIS Layers Created by Alexandria Archaeology and The Ottery Group, Inc.

City of Alexandria/Office of Historic Alexandria/Alexandria Archaeology

	Stage IIA Trenches
	Potential Structure Locations
	Archaeological Research Lots
	Fort Ward Boundaries

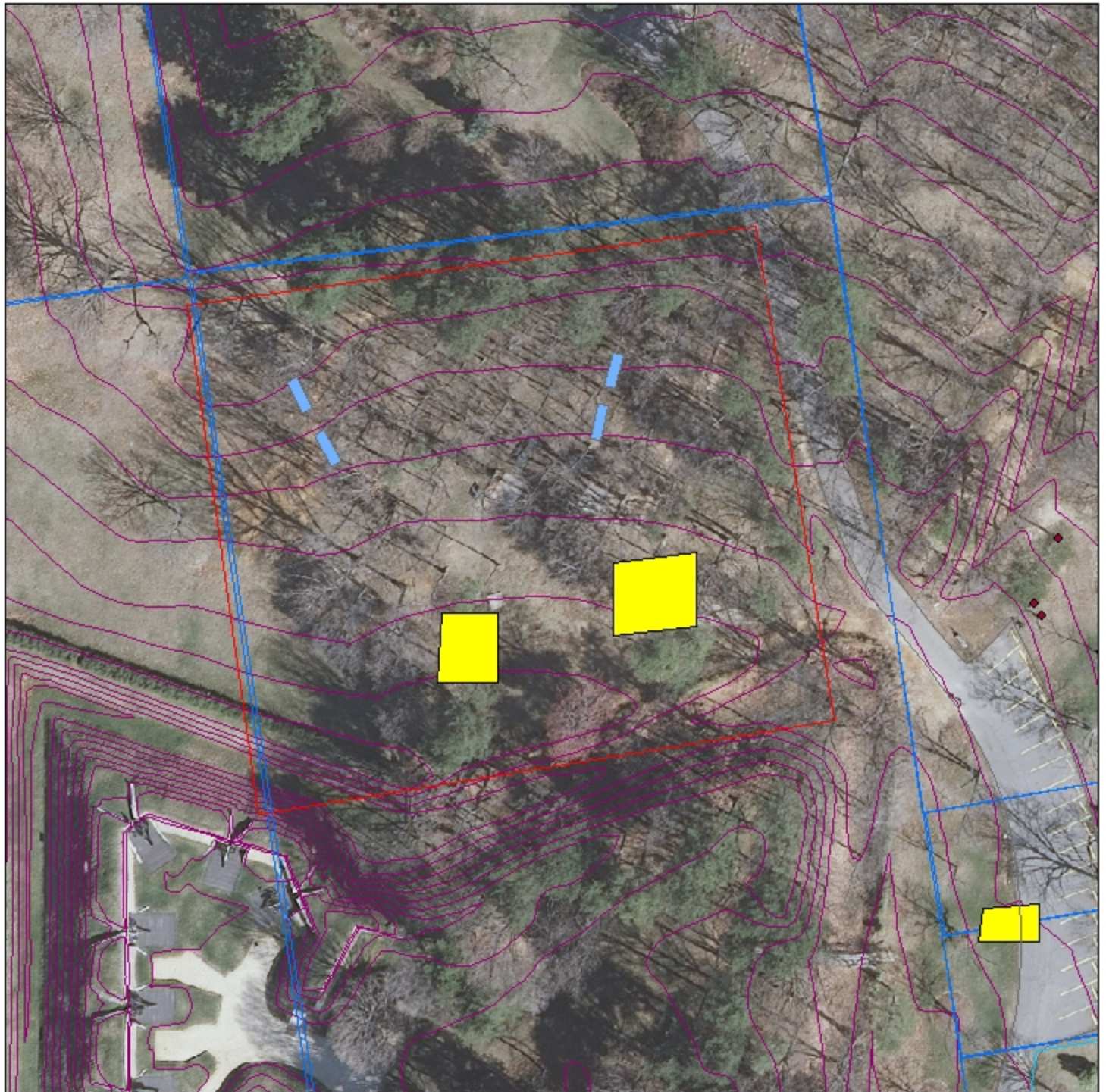


**Conceptual Map-- To be finalized with survey data**







# Craven Lot

## Stage IIA Excavations for Grave Identification



30 15 0 30 Feet



-  Stage IIA Trenches
-  Potential Structure Locations
-  Archaeological Research Lots
-  Two-Foot Contour

Source: City of Alexandria 2009 Aerial  
GIS Layers Created by Alexandria Archaeology and The Ottery Group, Inc.

**Conceptual Map--to be finalized with survey data**