



Fort Ward Park Accessibility Improvements Playground Concept Design

June 15, 2019
Virtual Public Meeting #2

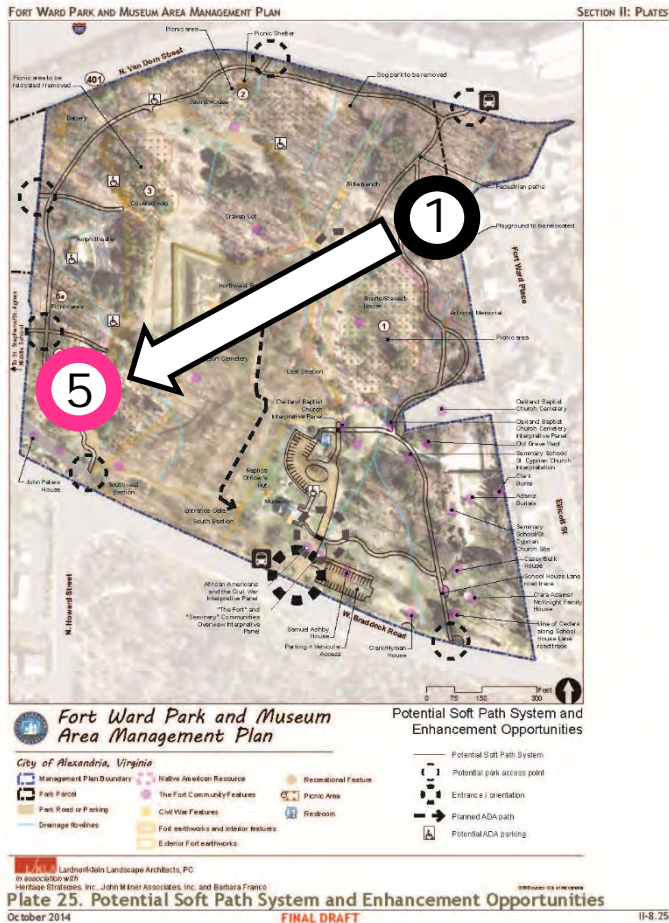
Agenda

- June 15-26 Public Review and Comment Period
- 20-minute Pre-recorded Presentation
- Review of Project Scope*
 - Playground Design Approach*
 - Site Constraints*
 - Review of Playground Design*
 - Next Steps*
- July Follow-up responses posted to project website



Fort Ward Park Accessibility Improvements

Relocation of Existing Playground



- Fort Ward Management Plan recommends relocation of existing playground to Area 5
- Some existing playground equipment will be re-installed in Area 5
- Concept design Spring/Summer 2020
- Construction anticipated Spring 2021

Fort Ward Park Accessibility Improvements

Relocation of Existing Playground



- ADA compliant seating, picnic tables, and drinking fountain will be added
- 1 standard ADA space and 1 van ADA space
- Accessible route to connect ADA parking with playground
- Existing trees to be preserved, with exception of dying or invasive species

Fort Ward Park Accessibility Improvements

Relocation of Existing Playground



- Playground location is responsive to known archaeological resources
- Two concepts were developed
 - Elevated playground to minimize ground disturbance and to protect in place cultural resources
 - At-grade placement, requiring more significant excavation
- The elevated playground concept design will move forward and will be reviewed during this presentation

Fort Ward Park Accessibility Improvements

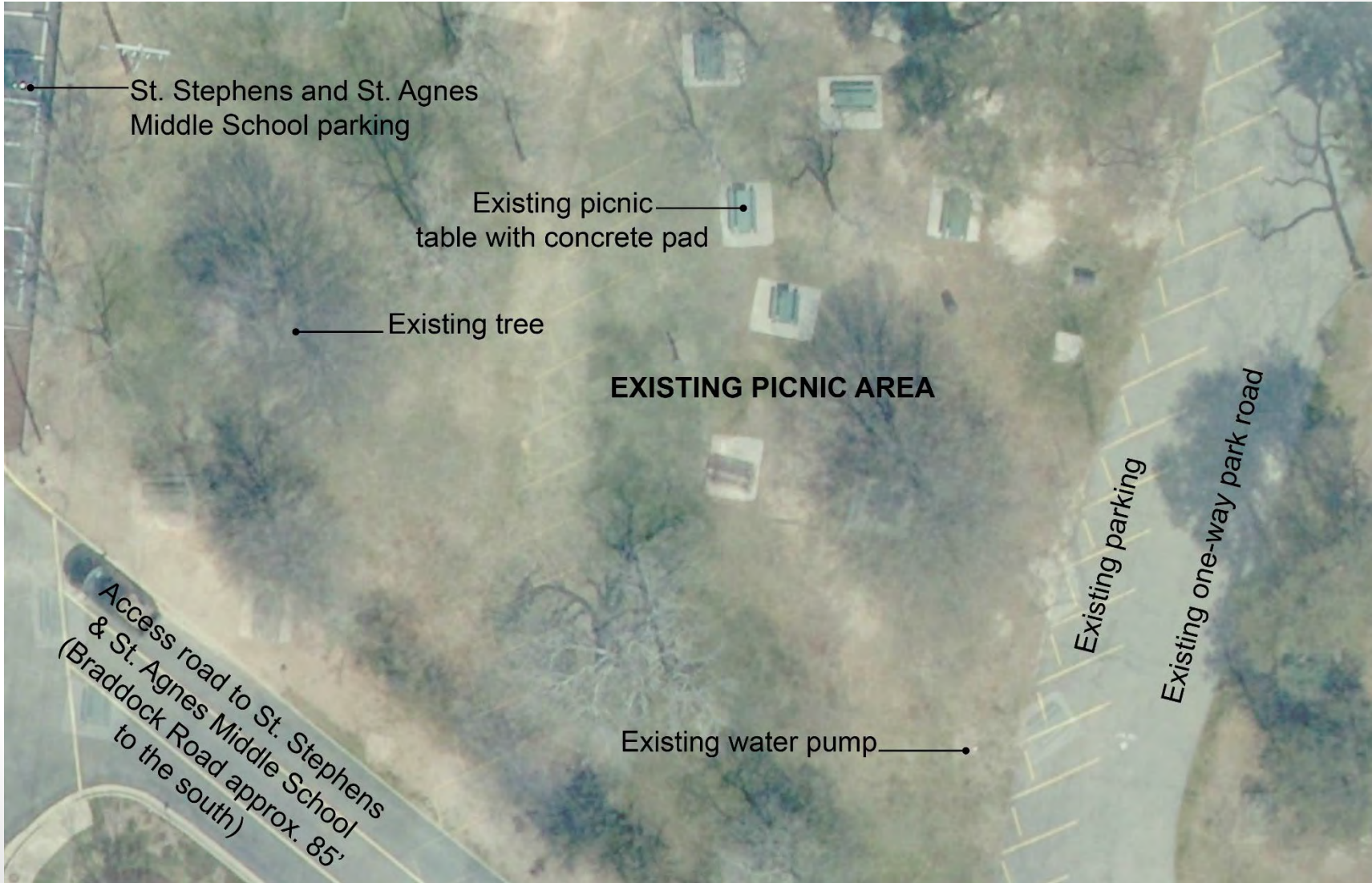
Archaeological Approach to Playground



- The site of the playground's new location is within several house lots (Research Lots 32, 33 and 34) that were once the home sites of the John Peters family (ca. 1912-1960), and for a short period of time the Frank Lewis family (ca. 1922-1935) before selling to Peters (Lot 34).
- To prevent a significant amount of disturbance to the archaeological resources, instead of removing soil to level the area for the playground, the playground design team will build the playground on top of several feet of fill soil. By raising the playground above grade, the archaeological resources will be preserved for future research.
- Some of the playground equipment will need to be deeply anchored in the ground. Archaeologists will excavate those locations to recover any artifacts and investigate any buried features that might be impacted.
- Community members have expressed a concern that family cemeteries may be located on the proposed site of the playground. In response, Alexandria Archaeology conducted extensive research on both research lots and found no evidence that the Peters or Lewis families used the lots to bury deceased family members. Alexandria Archaeology can provide any interested parties the full report of the research.

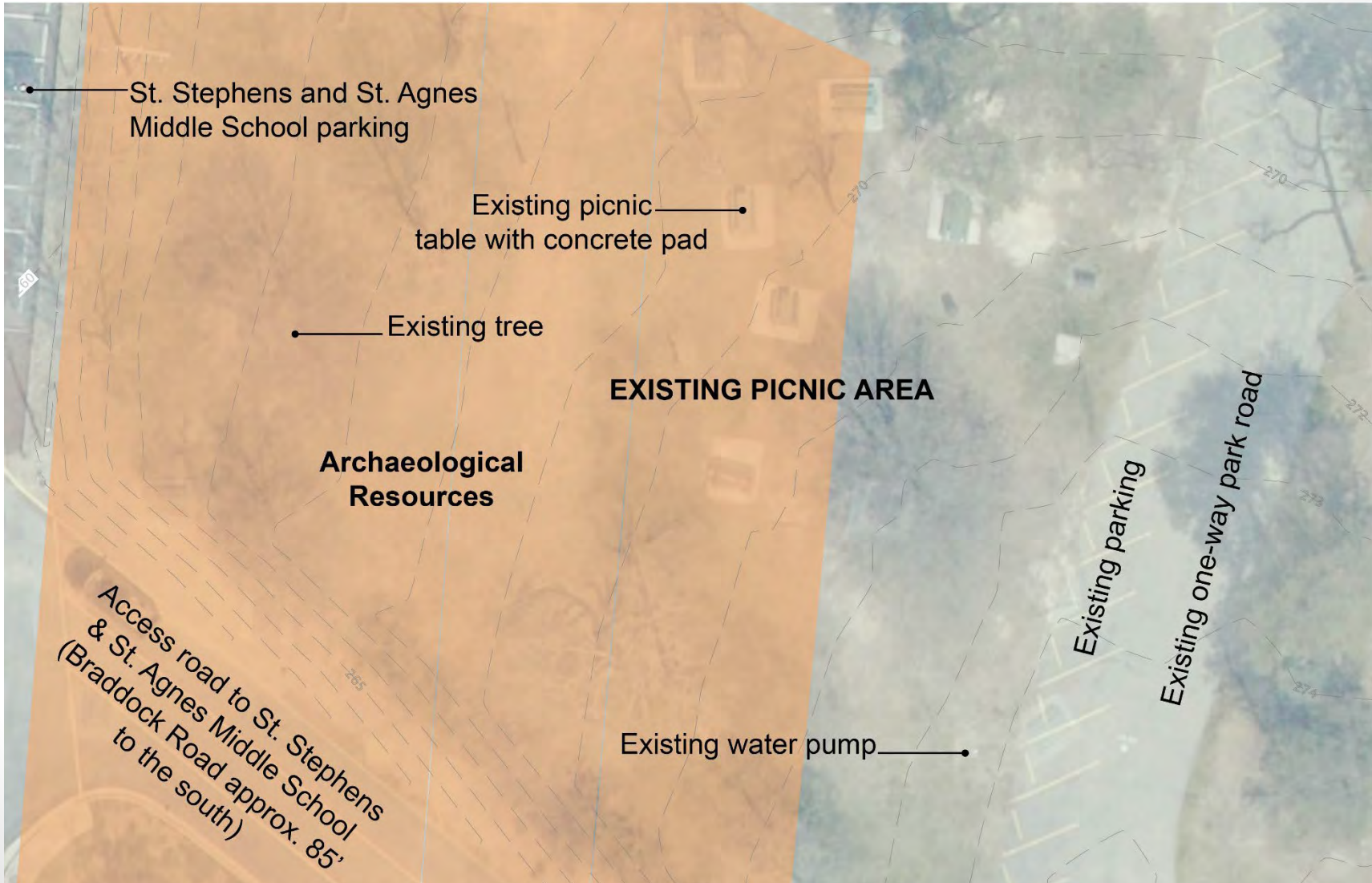
Fort Ward Park Accessibility Improvements

Site Constraints – Existing Conditions



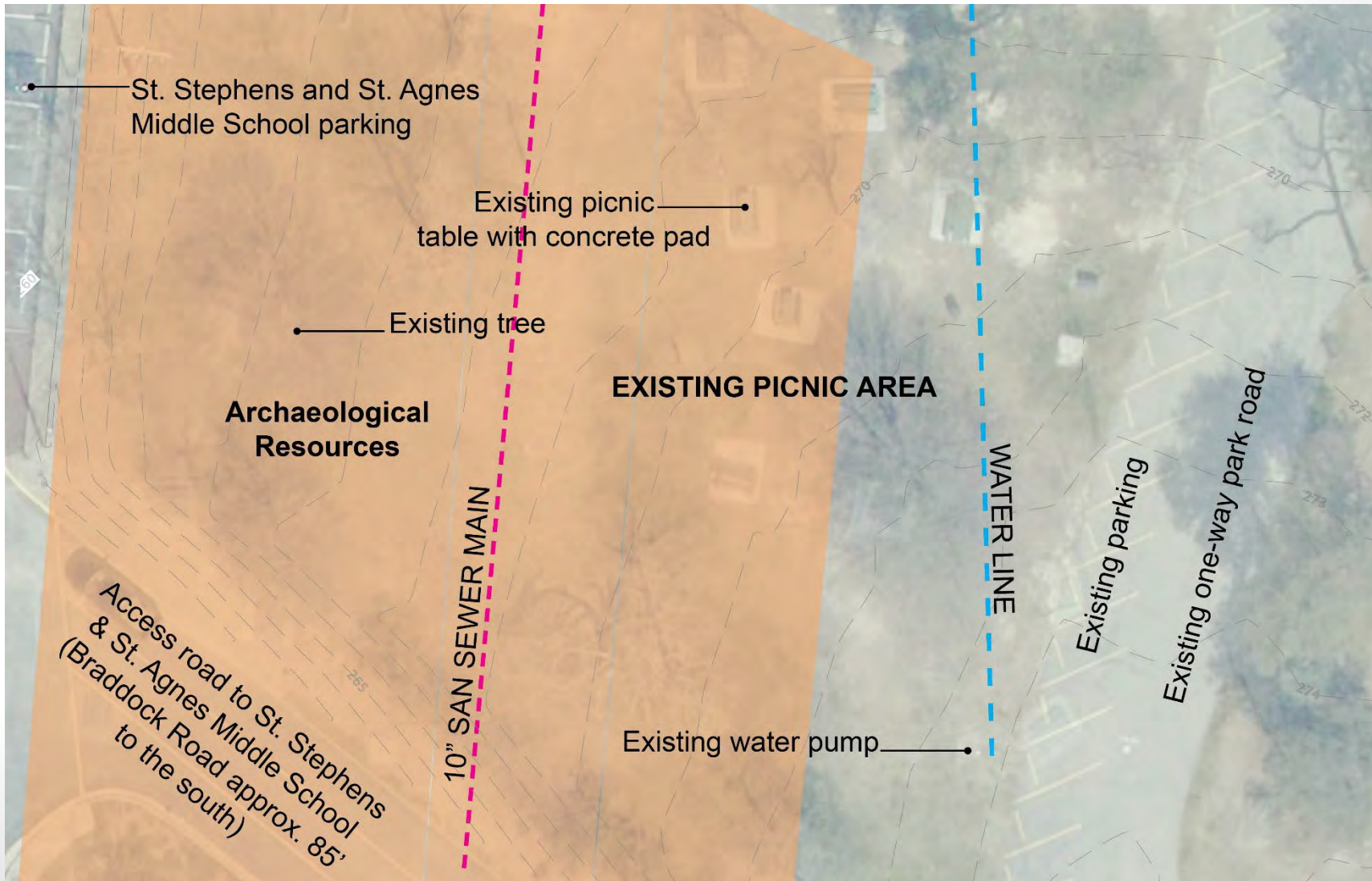
Fort Ward Park Accessibility Improvements

Site Constraints – Archaeological



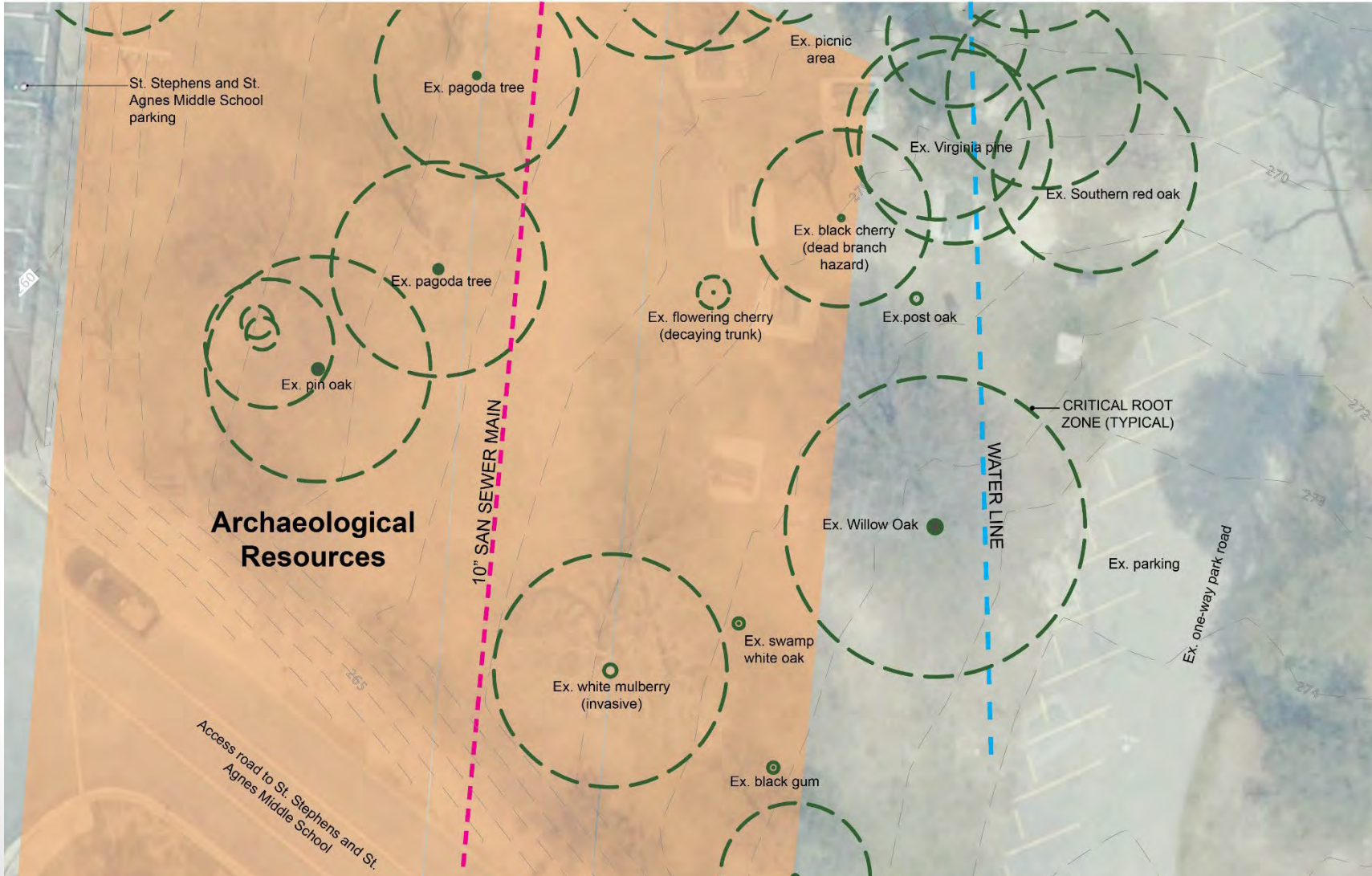
Fort Ward Park Accessibility Improvements

Site Constraints – Utilities



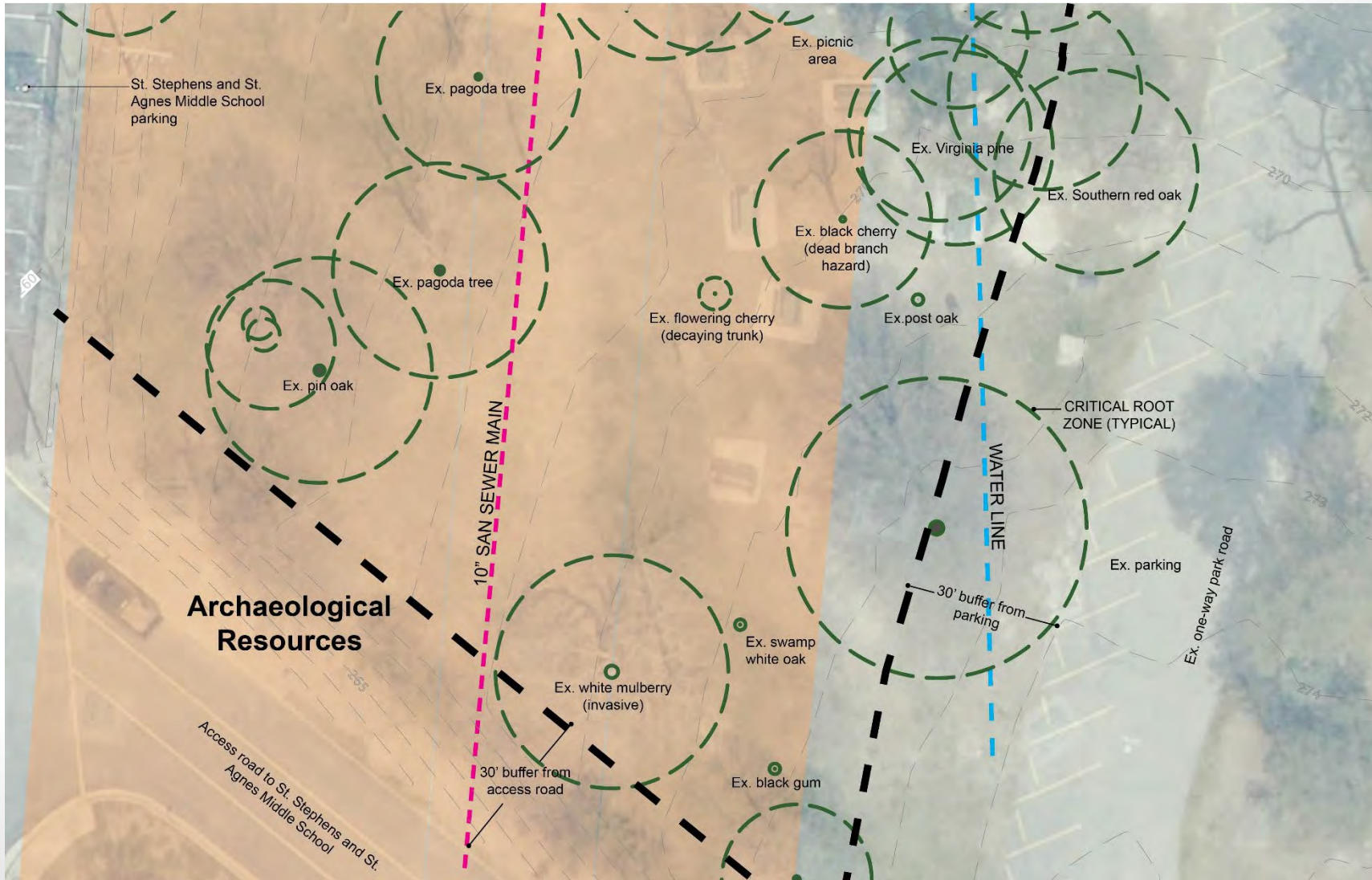
Fort Ward Park Accessibility Improvements

Site Constraints – Critical Root Zones



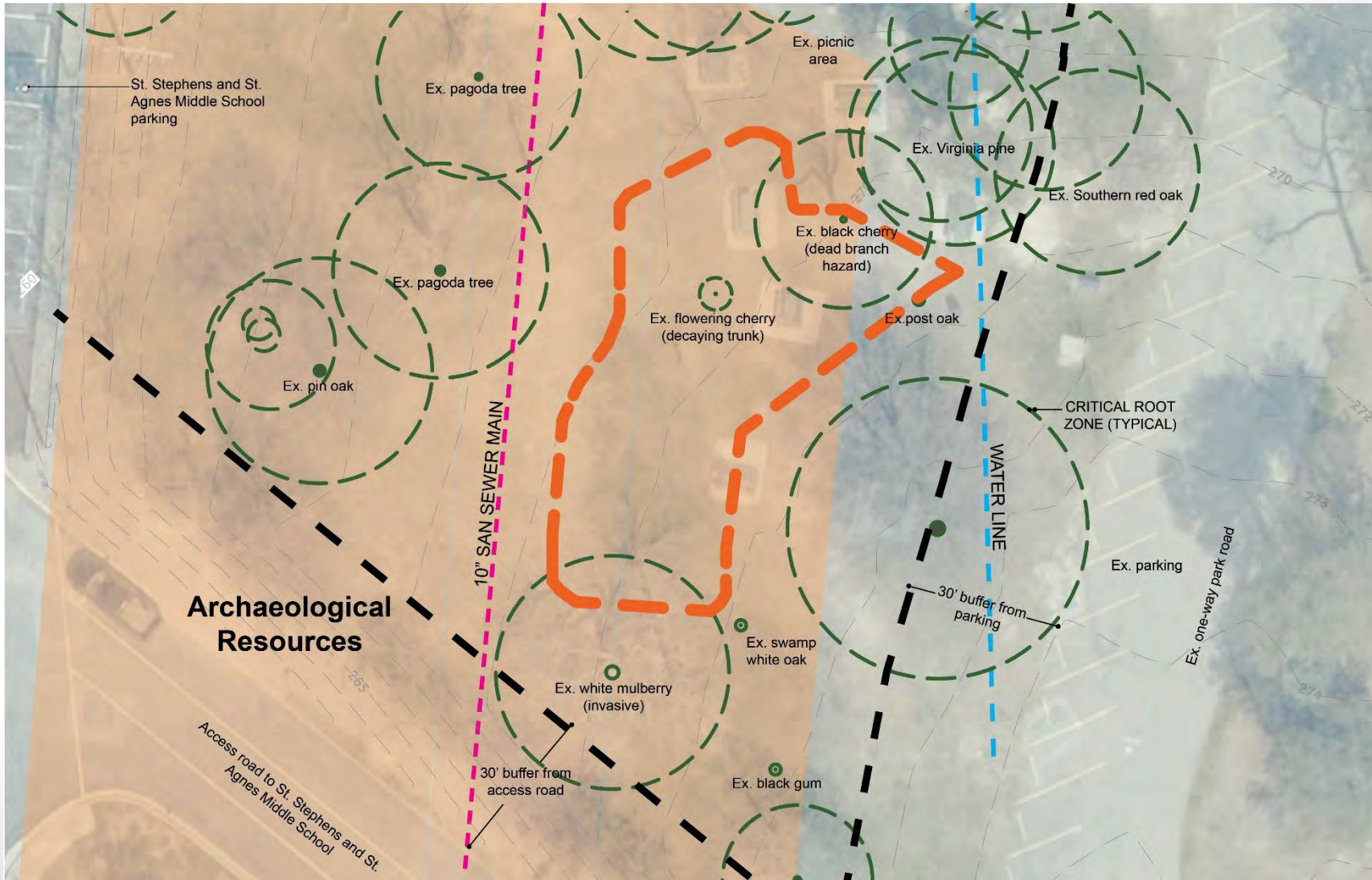
Fort Ward Park Accessibility Improvements

Site Constraints – 30' Buffers



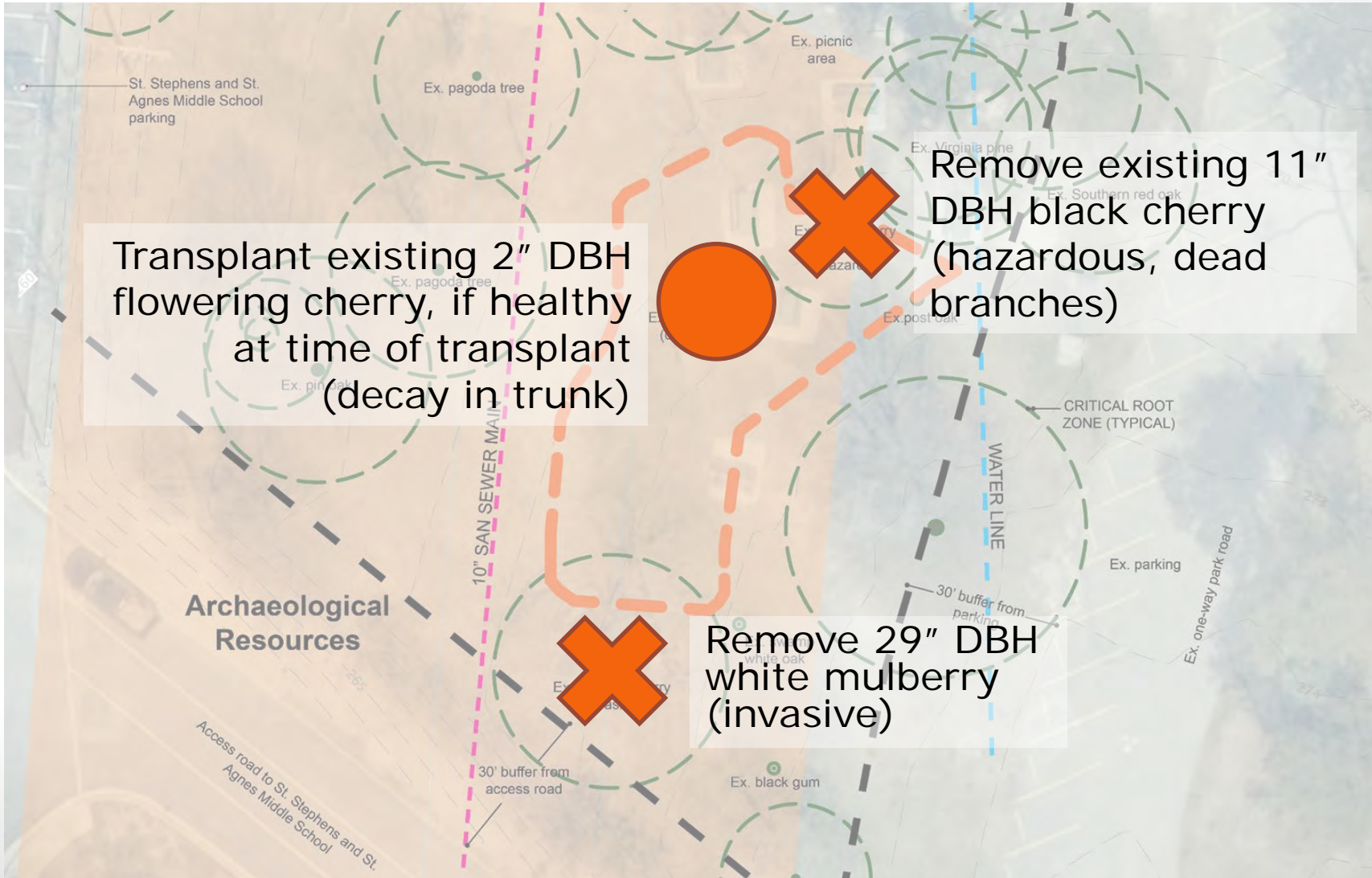
Fort Ward Park Accessibility Improvements

Site Constraints – Playground Limits

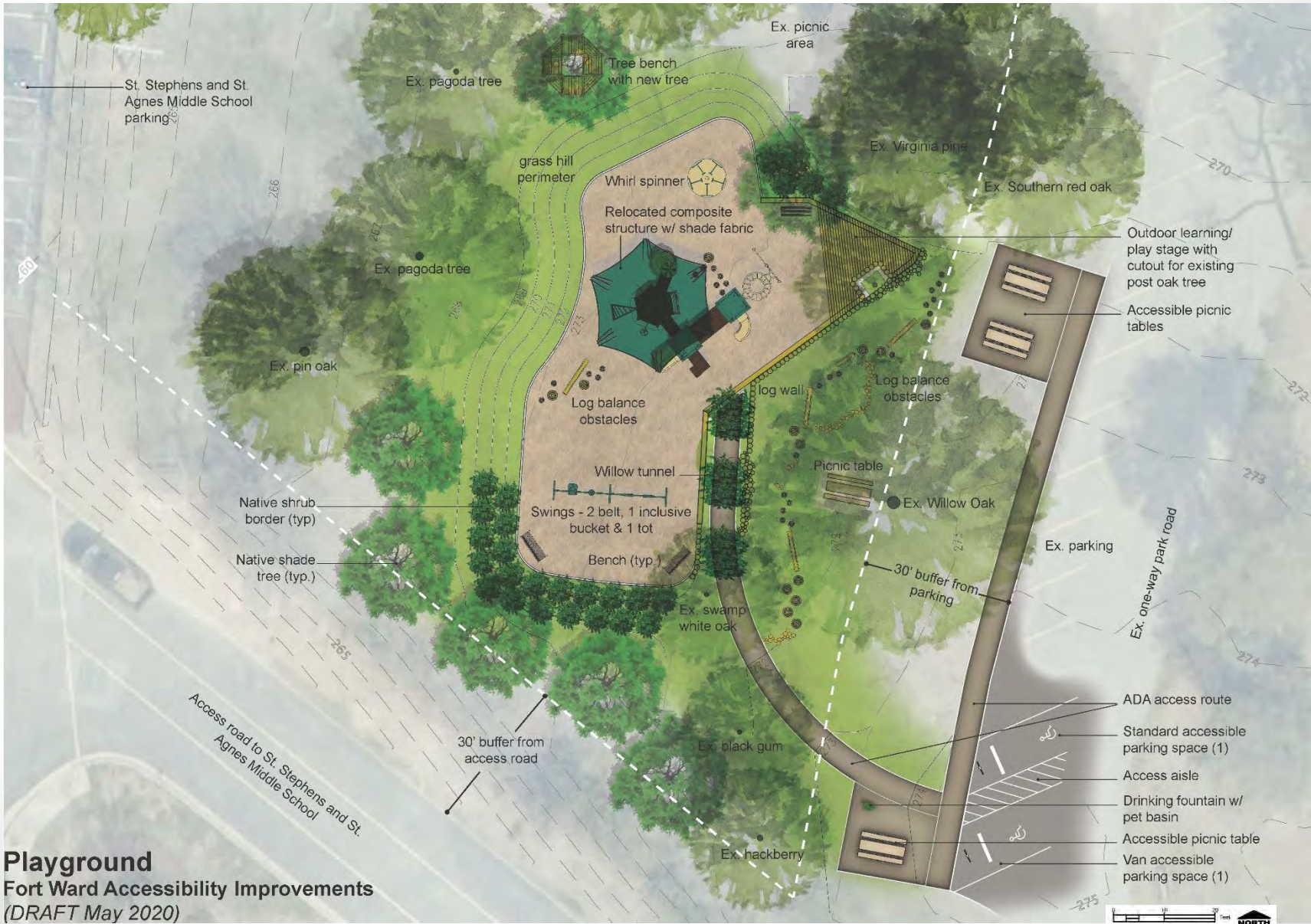


Fort Ward Park Accessibility Improvements

Site Constraints – Existing Trees



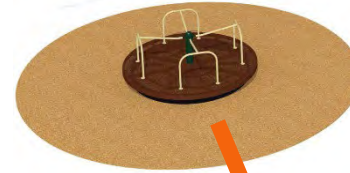
Fort Ward Park Accessibility Improvements Playground Concept Design



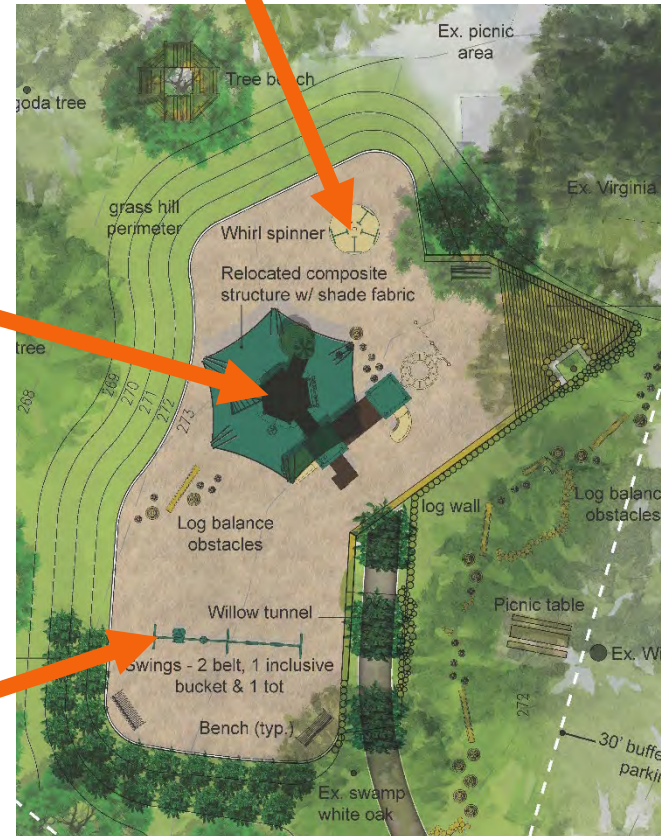
Playground
Fort Ward Accessibility Improvements
(DRAFT May 2020)

Fort Ward Park Accessibility Improvements Playground Concept Design

Existing Structure with
Shade Fabric Addition
(Ages 5-12)

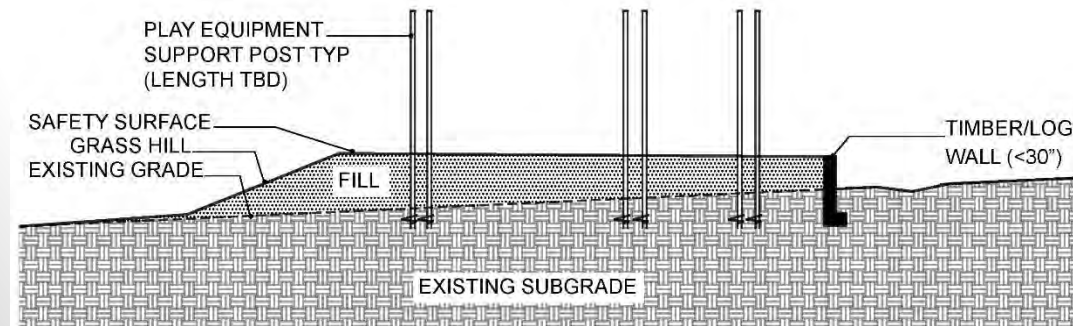
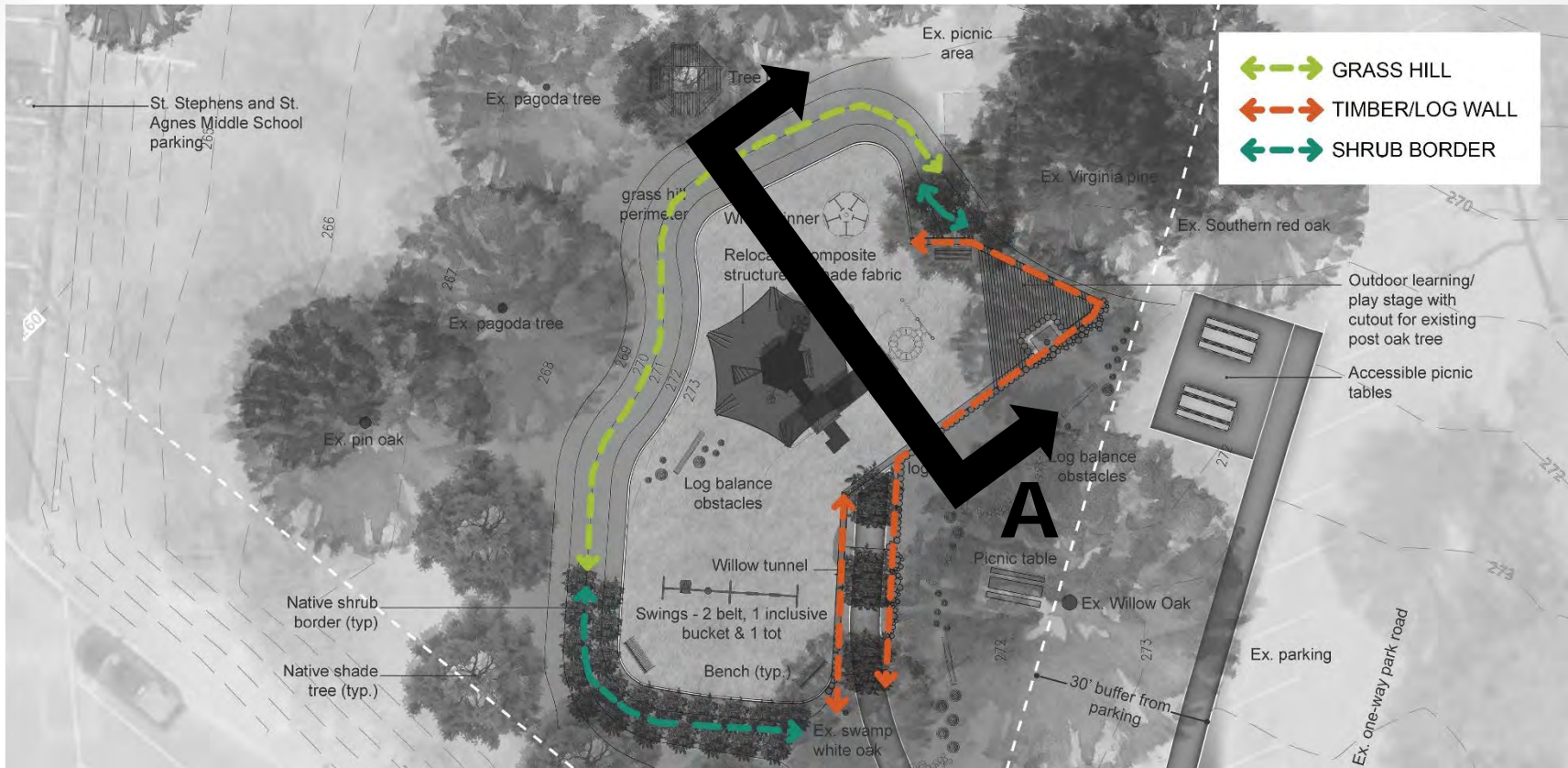
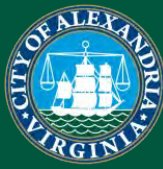


Whirl spinner
(Ages 5-12)

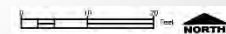


Swings
(Ages 2-12)

Fort Ward Park Accessibility Improvements Playground Concept Design

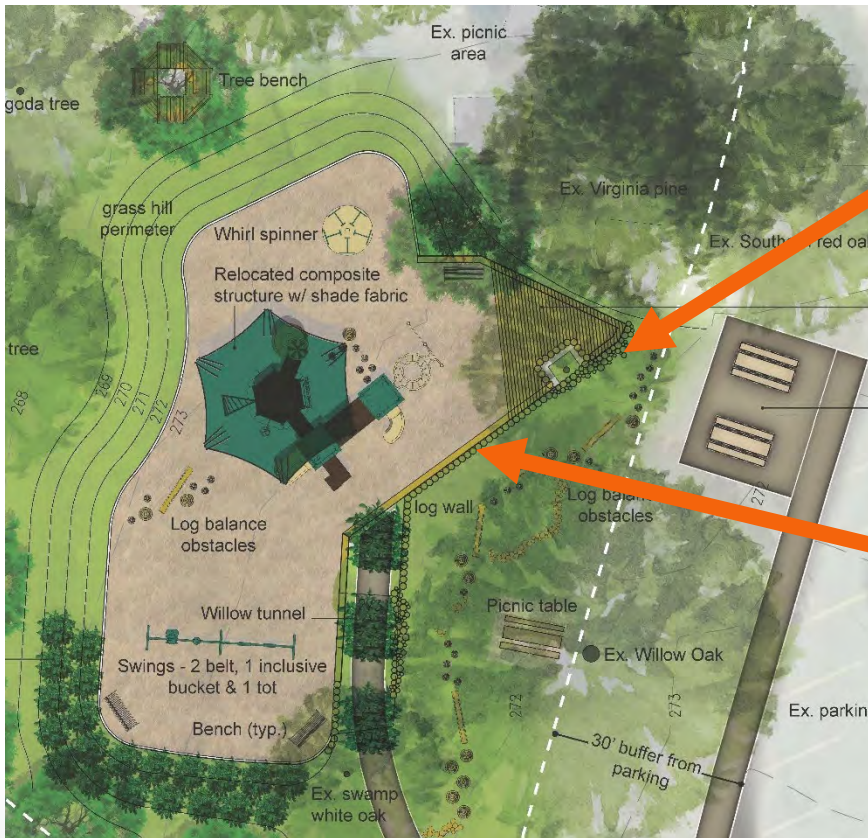


Section A



Fort Ward Park Accessibility Improvements Playground Concept Design

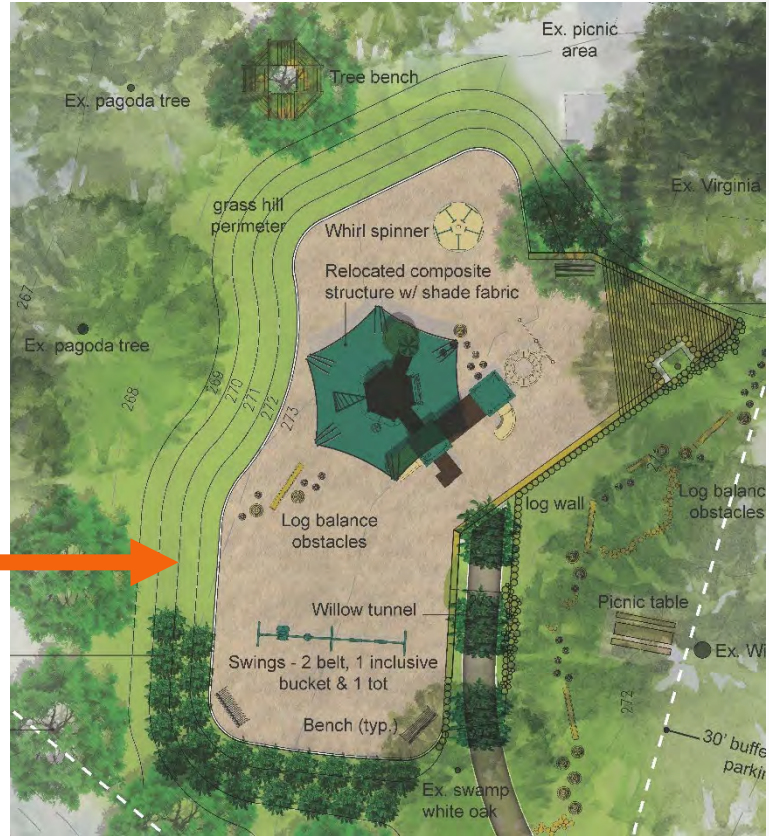
Log steppers
(Ages 2+)



Timber/log border wall

Fort Ward Park Accessibility Improvements Playground Concept Design

Grass hill perimeter



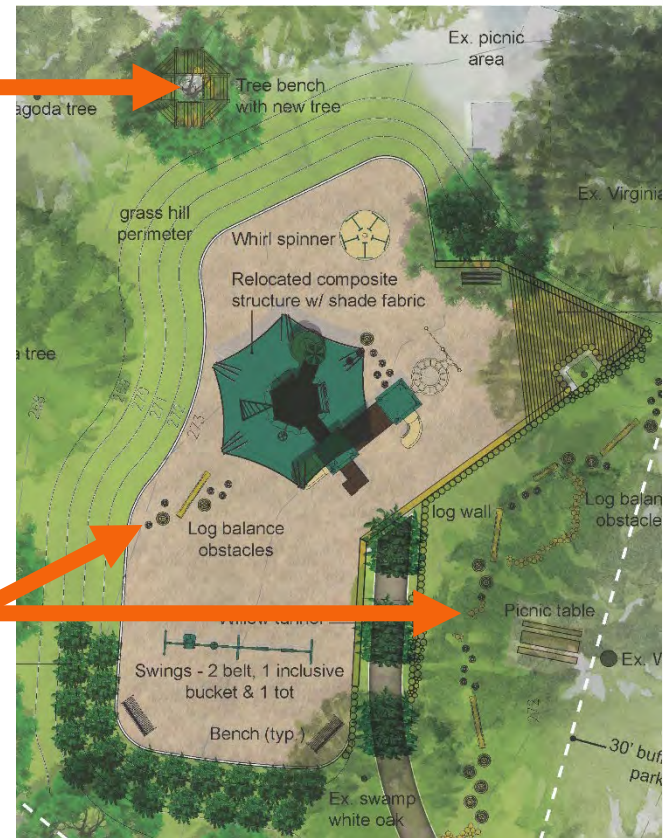
Fort Ward Park Accessibility Improvements Playground Concept Design



Tree bench
with new tree
(Ages 2+)

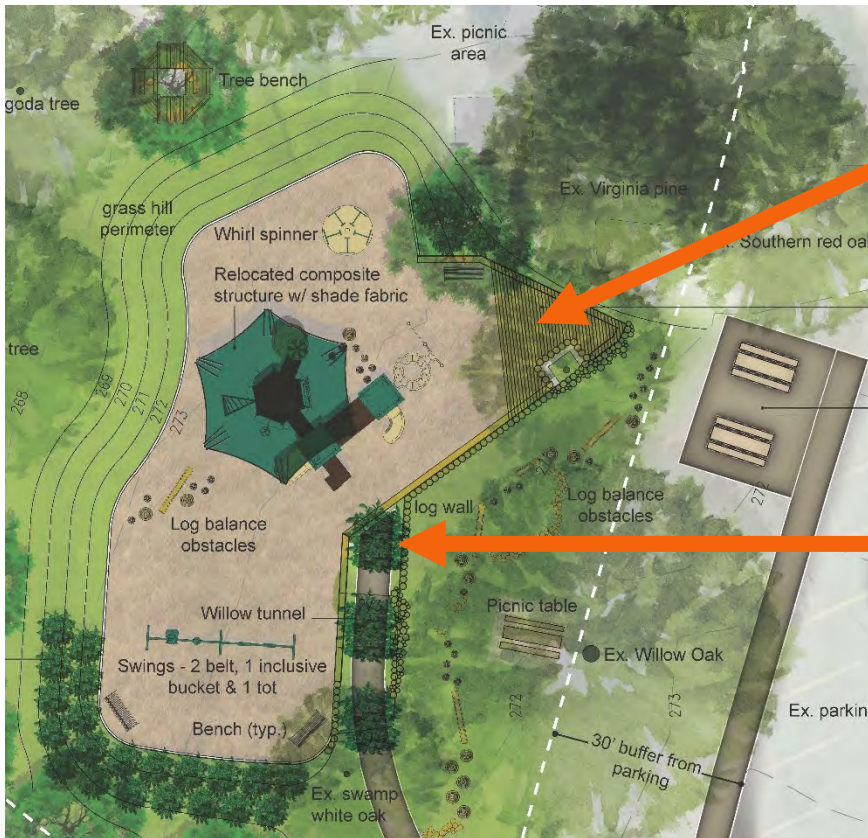


Wood log obstacle course
(Ages 2+)



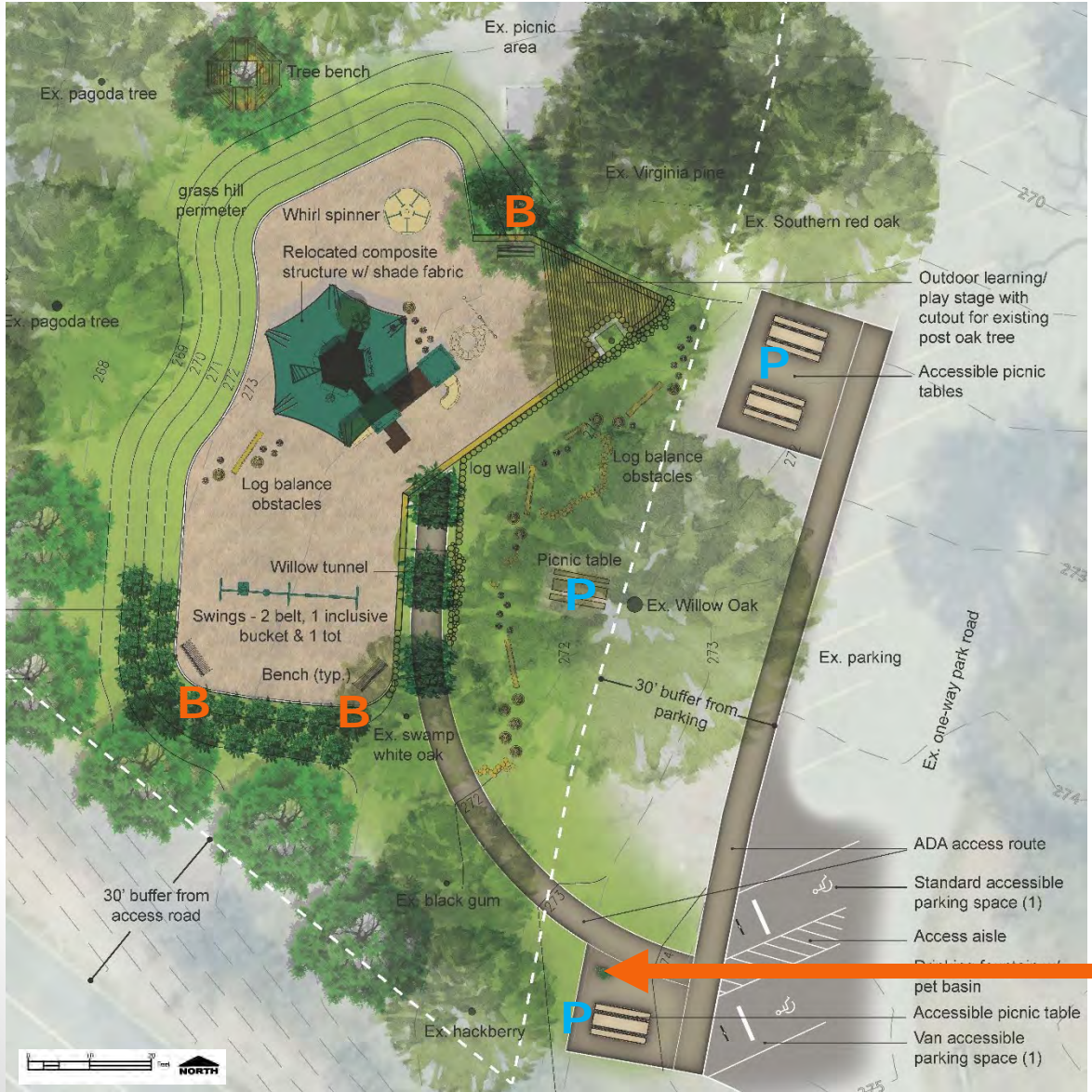
Fort Ward Park Accessibility Improvements Playground Concept Design

Outdoor learning/
play stage with cutout
for existing post oak
(Ages 2+)



Willow Tunnel (Ages 2+)

Fort Ward Park Accessibility Improvements Playground Concept Design



Benches (B)



Picnic tables (P)



Drinking Fountain with pet basin

Credit: Most Dependable Fountains

Fort Ward Park Accessibility Improvements
Playground Concept Design



Fort Ward Park Accessibility Improvements
Playground Concept Design



Fort Ward Park Accessibility Improvements
Playground Concept Design



Fort Ward Park Accessibility Improvements
Playground Concept Design



Fort Ward Park Accessibility Improvements
Playground Concept Design



Fort Ward Park Accessibility Improvements
Playground Concept Design



Fort Ward Park Accessibility Improvements

Playground Concept Design



Fort Ward Park Accessibility Improvements
Playground Concept Design





Fort Ward Park Accessibility Improvements
Playground Concept Design

Next Steps:

June 15-26 **Public Review &
Comment Period**

Please provide comments at the
Project Website:

<https://www.alexandriava.gov/recreation/info/default.aspx?id=29638>

July **Follow-up responses**
posted to project website



Fort Ward Park Accessibility Improvements
Playground Concept Design

THANK YOU!

Please direct questions to:

Judy Lo, RLA, ASLA

Division of Park Planning, Design + Capital Development

Department of Recreation, Parks and Cultural Activities

Lee Center, 1108 Jefferson Street, 2nd Floor

Alexandria, VA 22314

Office: 703.746.5490

Fax: 703.838.6344

Email: Judy.Lo@alexandriava.gov

judy.lo@alexandriava.gov