

Chetworth Place Park

History and Character

Chetworth Place Park is located at 810 Chetworth Place in the Northeast Old Town neighborhood. The park is located in the middle of a very active community amongst the townhouses of Michigan Court and Chetworth Place near Bashford Lane.

The Northeast Citizens' Association has adopted the park.

The 0.28 acre park features a passive lawn, seating, shade trees, and a playground. The playground, renovated in 2002 and is intended for ages 2-5. The playground consists of standard play equipment, swings, a drinking fountain, and wood chip surface.

Existing Conditions Map



Chetworth Place Park

Which of the following existing park elements would you like to preserve, enhance, or transform?					
Element Number of responses	Park sign 18		Element Number of responses	Kiosk 16	
Value	Count	Percent	Value	Count	Percent
Preserve it	14	78	Preserve it	9	56
Enhance it	4	22	Enhance it	3	19
Transform it	0	0	Transform it	4	25
Element Number of responses	Playground 18		Element Number of responses	Benches 19	
Value	Count	Percent	Value	Count	Percent
Preserve it	6	33	Preserve it	6	32
Enhance it	6	33	Enhance it	9	47
Transform it	6	33	Transform it	4	21
Element Number of responses	Picnic tables 20		Element Number of responses	Landscaping 20	
Value	Count	Percent	Value	Count	Percent
Preserve it	5	25	Preserve it	5	25
Enhance it	11	55	Enhance it	9	45
Transform it	4	20	Transform it	6	30
Element Number of responses	Open lawn 20		Element Number of responses	Fence 19	
Value	Count	Percent	Value	Count	Percent
Preserve it	9	45	Preserve it	14	74
Enhance it	6	30	Enhance it	4	21
Transform it	5	25	Transform it	1	5
Element Number of responses	Fountain 17		Element Number of responses	Trashcan 19	
Value	Count	Percent	Value	Count	Percent
Preserve it	11	65	Preserve it	15	79
Enhance it	4	23	Enhance it	4	21
Transform it	2	12	Transform it	0	0

What is currently NOT in the park that you would like to see there?

1. "Big kid swings"
2. More equipment/spaces for older children. The play structure is small and geared towards the very young as are the swings. Would be great to add equipment for older kids- zip line, ropes course, seesaw, monkey bars. Also the large lawn goes unused and could make a great half basketball court or tennis court that would bring more neighbors to the park
3. A seesaw
4. Park has what it needs. But better maintenance and updated equipment would transform it.
5. Half basketball court Playground equipment for older children
6. Lighting, amenities for adults/teens, public art, recreation, exercise,
7. It'd be nice if there was also a big kid swing. Even if the set isn't changed, there could be one baby swing and one more big kid swing.
8. Play structures for tots, rubberized play flooring, innovative play structures
9. It isn't well maintained and attractive. My neighbors like to gather on occasion and could use more tables and flexible seating.
10. Better plants. It could be so much more pleasant

Community Feedback

In Fall 2018, staff collected community feedback to understand how the park is used and how it could be improved in the future. The following information summarizes what we heard through an online survey and community workshop. Over 400 people responded to the survey in total, 21 of which were specific Chetworth Place Park. Staff used the collected information to develop the draft park plans.

In 10 years, I would like this Park to...

(Top three rankings shown, based on a weighted score)

1. *Be a place to create social connections with neighbors*
2. *Be a safe place for children to explore*
3. *Have lots of activity*



Chetworth Place Park

Which of the following existing proposed park elements do you love, like, or not like?

Recommendation Park welcome sign			Recommendation Path		
Number of responses 24			Number of responses 23		
Value	Count	Percent	Value	Count	Percent
I love it!	16	67	I love it!	8	35
I like it	8	33	I like it	5	22
I don't like it	0	60	I don't like it	10	43

Recommendation Seating			Recommendation Game tables & seating		
Number of responses 23			Number of responses 24		
Value	Count	Percent	Value	Count	Percent
I love it!	13	54	I love it!	9	38
I like it	8	33	I like it	7	29
I don't like it	3	13	I don't like it	8	33

Recommendation Playground			Recommendation Fence		
Number of responses 23			Number of responses 21		
Value	Count	Percent	Value	Count	Percent
I love it!	19	83	I love it!	12	57
I like it	14	17	I like it	6	29
I don't like it	0	0	I don't like it	3	14

Recommendation Park entrance			Recommendation Kiosk		
Number of responses 23			Number of responses 23		
Value	Count	Percent	Value	Count	Percent
I love it!	13	57	I love it!	11	48
I like it	9	39	I like it	11	48
I don't like it	1	4	I don't like it	1	4

In the summer of 2019 RPCA staff collected community feedback on the draft recommendations for improving this pocket park. The following information summarizes what was heard through online surveys and community feedback (see appendix for full results). The city received 716 responses in total, 24 of which were specific to Chetworth Place Park.

Based on information from the summer input phase, staff updated the plan to best represent current and future community needs. A major change to the draft park plan is the removal of the path through the park based on community feedback received. The community wants to preserve the existing open lawn and the proposed path would preclude this. The final plan was updated to reflect this.

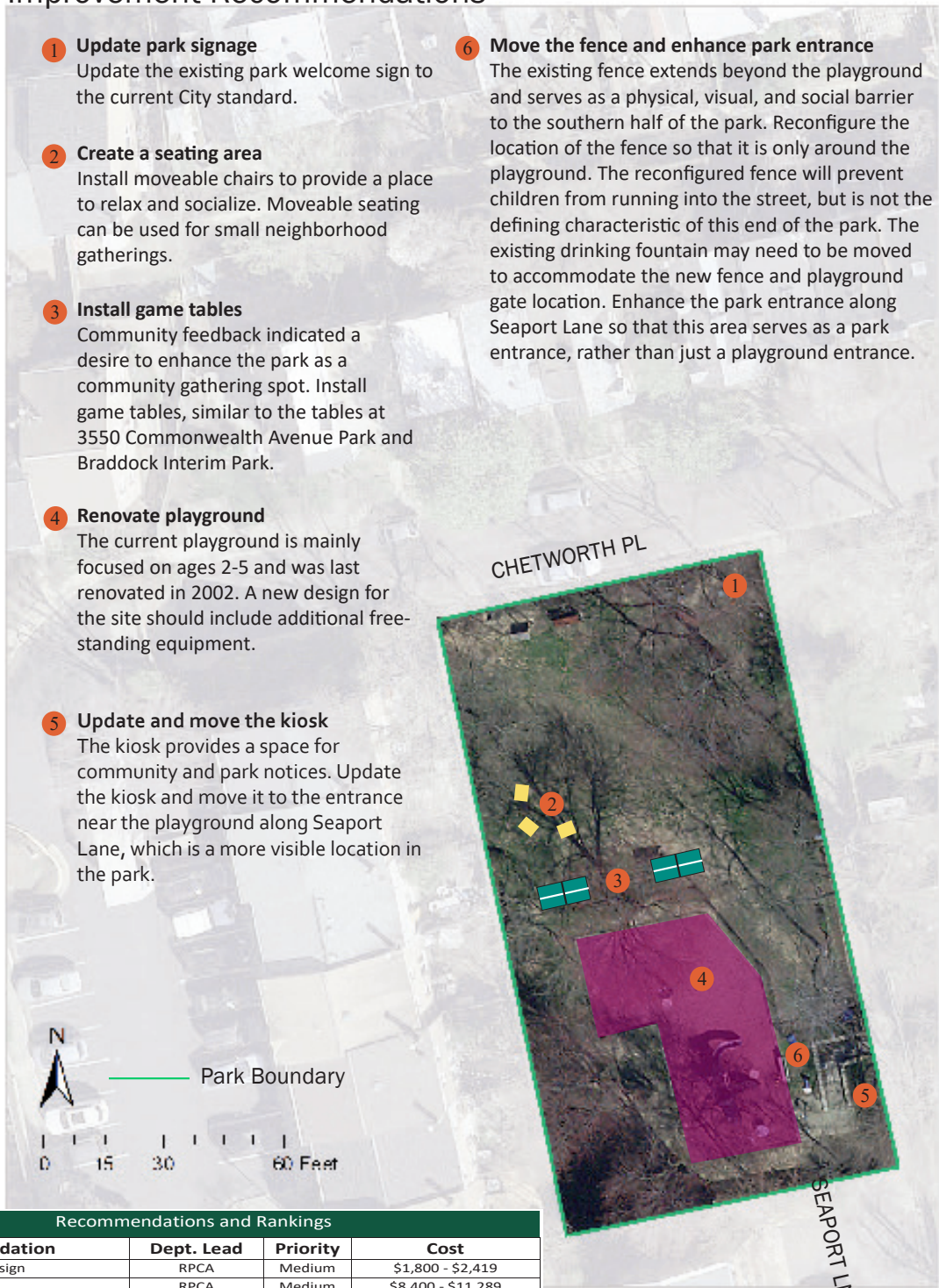
Improvement Recommendations

- Update park signage**
The existing park welcome sign will be updated to the current standard.
- Add a path connecting the two park entrances**
Install a path through the park to connect the two entrances to the park from Chetworth Place and Seaport Lane. This pathway would provide an accessible way to access and experience the park.
- Add social seating areas**
Install round tables with seating to provide places to relax, picnic, and socialize. They can also be used as seating for neighborhood events and gatherings.
- Install game tables and seating**
Community feedback indicated a desire to enhance the park as a community gathering spot. Install game tables and seating, similar to the tables at 3550 Commonwealth Avenue Park and Braddock interim park.
- Renovate the playground**
The current playground is mainly focused on ages 2-5 and was last renovated in 2002. A new design for the site should include additional structures that interest all ages.
- Move the fence and enhance park entrance**
The existing fence extends beyond the playground and serves as a physical, visual, and social barrier to the southern half of the park. Reconfigure the location of the fence so that it is only around the playground. The fence will prevent children from running into the street, but will not be the defining characteristic of this end of the park. The existing drinking fountain may need to be moved to accommodate the new fence and playground gate location. Enhance the park entrance along Seaport Lane so that this area serves as a park entrance, rather than just a playground entrance.
- Update and move the kiosk**
The kiosk provides a space for community and park notices. Update the kiosk and move it to the entrance near the playground along Seaport Lane, which is a more visible location in the park.

Chetworth Place Park

Improvement Recommendations

- 1 Update park signage**
Update the existing park welcome sign to the current City standard.
- 2 Create a seating area**
Install moveable chairs to provide a place to relax and socialize. Moveable seating can be used for small neighborhood gatherings.
- 3 Install game tables**
Community feedback indicated a desire to enhance the park as a community gathering spot. Install game tables, similar to the tables at 3550 Commonwealth Avenue Park and Braddock Interim Park.
- 4 Renovate playground**
The current playground is mainly focused on ages 2-5 and was last renovated in 2002. A new design for the site should include additional free-standing equipment.
- 5 Update and move the kiosk**
The kiosk provides a space for community and park notices. Update the kiosk and move it to the entrance near the playground along Seaport Lane, which is a more visible location in the park.
- 6 Move the fence and enhance park entrance**
The existing fence extends beyond the playground and serves as a physical, visual, and social barrier to the southern half of the park. Reconfigure the location of the fence so that it is only around the playground. The reconfigured fence will prevent children from running into the street, but is not the defining characteristic of this end of the park. The existing drinking fountain may need to be moved to accommodate the new fence and playground gate location. Enhance the park entrance along Seaport Lane so that this area serves as a park entrance, rather than just a playground entrance.



Recommendations and Rankings

#	Recommendation	Dept. Lead	Priority	Cost
1	Park welcome sign	RPCA	Medium	\$1,800 - \$2,419
2	Seating area	RPCA	Medium	\$8,400 - \$11,289
3	Game tables & seating	RPCA	Low	\$12,800 - \$17,202
4	Playground	RPCA	Medium	\$105,000 - \$141,111
5	Kiosk	RPCA	Low	\$1,900 - \$2,553
6	Reconfigure fence	RPCA	Medium	\$9,500 - \$12,767