

Braddock & Commonwealth Park

History and Character

Braddock & Commonwealth Park is located at the corner of Braddock Road and Commonwealth Avenue in the Rosemont neighborhood.

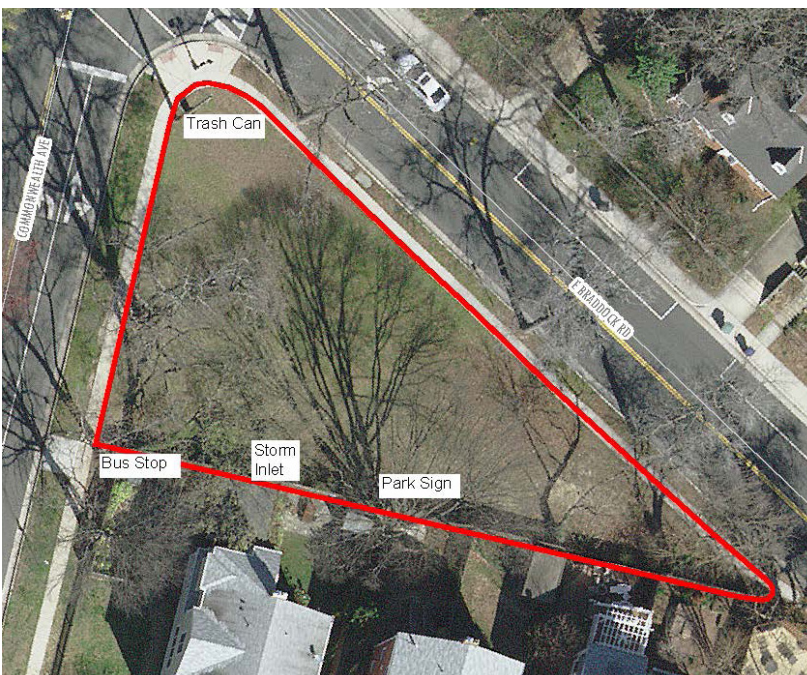
Braddock Road and Commonwealth Avenue are two very busy roads and the community has expressed concerns about pedestrian and dog safety in this neighborhood. In order to address pedestrian safety within the area, the Department of Transportation and Environmental Services has implemented several traffic calming measures, including leading pedestrian intervals that provide pedestrians with more conflict free time to cross the streets and no right on red turn restrictions.

The 0.22 acre park features large shade trees, a storm drain, and open turf and is currently designated as an unfenced, off-leash dog area.

The site was included in the Dog Park Master Plan in 2002, because of its use at the time. However, it does not meet the City's dog park standards that state dog parks and dog exercise areas in the city must be at least 0.5 acres or 21,789 square feet, and they must be at least 50 feet from a residential property line.



Existing Conditions Map



Braddock & Commonwealth Park

Which of the following existing park elements would you like to preserve, enhance, or transform?

Element Number of responses	Park sign 15		Element Number of responses	Open lawn/Dog exercise area 17	
Value	Count	Percent	Value	Count	Percent
Preserve it	8	53	Preserve it	2	12
Enhance it	6	40	Enhance it	9	53
Transform it	1	7	Transform it	6	35

Element Number of responses	Storm inlet 15		Element Number of responses	Trashcan 16	
Value	Count	Percent	Value	Count	Percent
Preserve it	9	60	Preserve it	12	75
Enhance it	5	33	Enhance it	3	19
Transform it	1	7	Transform it	1	6

What is currently NOT in the park that you would like to see there?

1. Fenced area for dogs. Two parks on Commonwealth don't protect dogs from chasing squirrels across the street.
2. Something to invite users to the space—focus on community building
3. Fence for dogs
4. Natural-looking structures for kids to play on, and a fence!! This is at a dangerous intersection – even if it stays a dog park instead of becoming a kids' are, there should be a fence around it.
5. A fence
6. Benches
7. As a dog park, it needs a fence. It would also be nice to have a bubbler.
8. Fence
9. A short but attractive fence
10. I like it the way it is
11. Fence
12. Natural landscaping to create border around the park and a seating area for it to be more useable space.

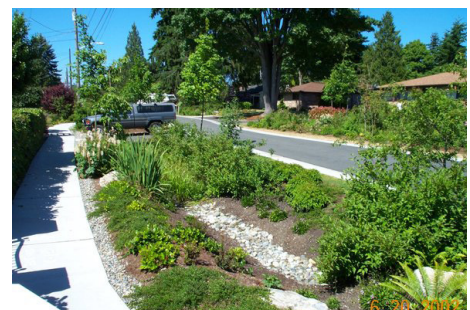
Community Feedback

In Fall 2018, RPCA staff collected community feedback to understand how the park is used and how it could be improved in the future. The following information summarizes what was heard through an online survey and community workshop. Over 400 people responded to the survey in total, 25 of which were specific to Braddock & Commonwealth Park. RPCA staff used the collected information to develop the draft park plans.

In 10 years, I would like this Park to...

(Top three rankings shown, based on a weighted score)

1. *Be a place to create social connections with neighbors*
2. *Be a space to go exercise on my own*
3. *Help reduce environmental impacts from urban surroundings*



The image above is an example of a vegetative swale. A vegetative swale is a shallow stormwater channel that is densely planted with a variety of grasses, shrubs, and/or trees to slow, filter, and infiltrate stormwater runoff.

A vegetative swale will relieve the drainage issues in the park.

Braddock & Commonwealth Park

Which of the following existing proposed park elements do you love, like, or not like?					
Recommendation	Park welcome sign		Recommendation	Benches	
Number of responses	37		Number of responses	36	
Value	Count	Percent	Value	Count	Percent
I love it!	15	41	I love it!	21	58
I like it	18	49	I like it	12	33
I don't like it	4	11	I don't like it	3	8
Recommendation	Path connection		Recommendation	Vegetated swale	
Number of responses	33		Number of responses	35	
Value	Count	Percent	Value	Count	Percent
I love it!	19	58	I love it!	24	69
I like it	8	24	I like it	9	26
I don't like it	6	18	I don't like it	2	6
Recommendation	Open lawn/dog exercise		Recommendation	Naturalistic parkour/exercise	
Number of responses	36		Number of responses	35	
Value	Count	Percent	Value	Count	Percent
I love it!	18	50	I love it!	11	31
I like it	9	25	I like it	4	11
I don't like it	9	25	I don't like it	20	57

In the summer of 2019 RPCA staff collected community feedback on the draft recommendations for improving this pocket park. The following information summarizes what was heard through online surveys and community feedback (see appendix for full results). The city received 716 responses in total, 37 of which were specific to Braddock & Commonwealth Park.

Based on information from the summer input phase, staff updated the plan to best represent current and future community needs. A major change to the draft park plan is that the recommendation for parkour and exercise equipment was removed. Community feedback indicated that this was not an amenity the community wanted in this park. Another change to the draft plan was the path connection was relocated to maintain the existing open space while providing a path to bring people in and through the park, and away from the busy street. The change was made based on community concerns about the need to preserve the existing open space.

Improvement Recommendations

- Add a park welcome sign**
Add a park welcome sign to meet the City's wayfinding standards and invite park users into the park.
- Provide benches**
Community feedback indicated a need for benches in the park. Install benches near Commonwealth Avenue and along the back edge of the park to create a social spot for park users of all ages to relax.
- Install a path connection through the park**
Install a path through the park to connect the sidewalks along Braddock Road and Commonwealth Avenue through an additional trail connection. This pathway would provide an accessible way to access and experience the park.
- Plant shrubs and native plants**
Planting shrubs and native plants around the perimeter of the park will help define the edges of the park and create a natural boundary to the park border. The native plants will also provide an area for natural habitat within a largely urban setting.
- Install a vegetated swale to capture water draining through the park**
The park drains east to west and there is a storm drain in the southeast corner of the park. A vegetated swale planted with shrubs and grasses will serve as a basin to capture and then adsorb rain water. The existing storm drain may be used as an overflow in the event of heavy rains. Any drainage improvements will be coordinated with the adjacent neighbors.
- Re-examine the dog area location through updating the Dog Park Master Plan**
There is community interest in a fenced dog area at Braddock & Commonwealth Park, however, the Dog Park Master Plan states that a fenced dog area must be a minimum of 1/2 acre and 50 ft. from a residential property. It is not possible to meet these requirements in this park. An update to the Citywide Dog Park Master Plan (developed in 2000) will re-evaluate the dog area criteria described above and whether this is an appropriate location.
- Install naturalistic parkour/exercise equipment**
Community feedback indicated a desire to use this park for exercise opportunities. Install naturalistic parkour and/or exercise equipment along the new path through the park.

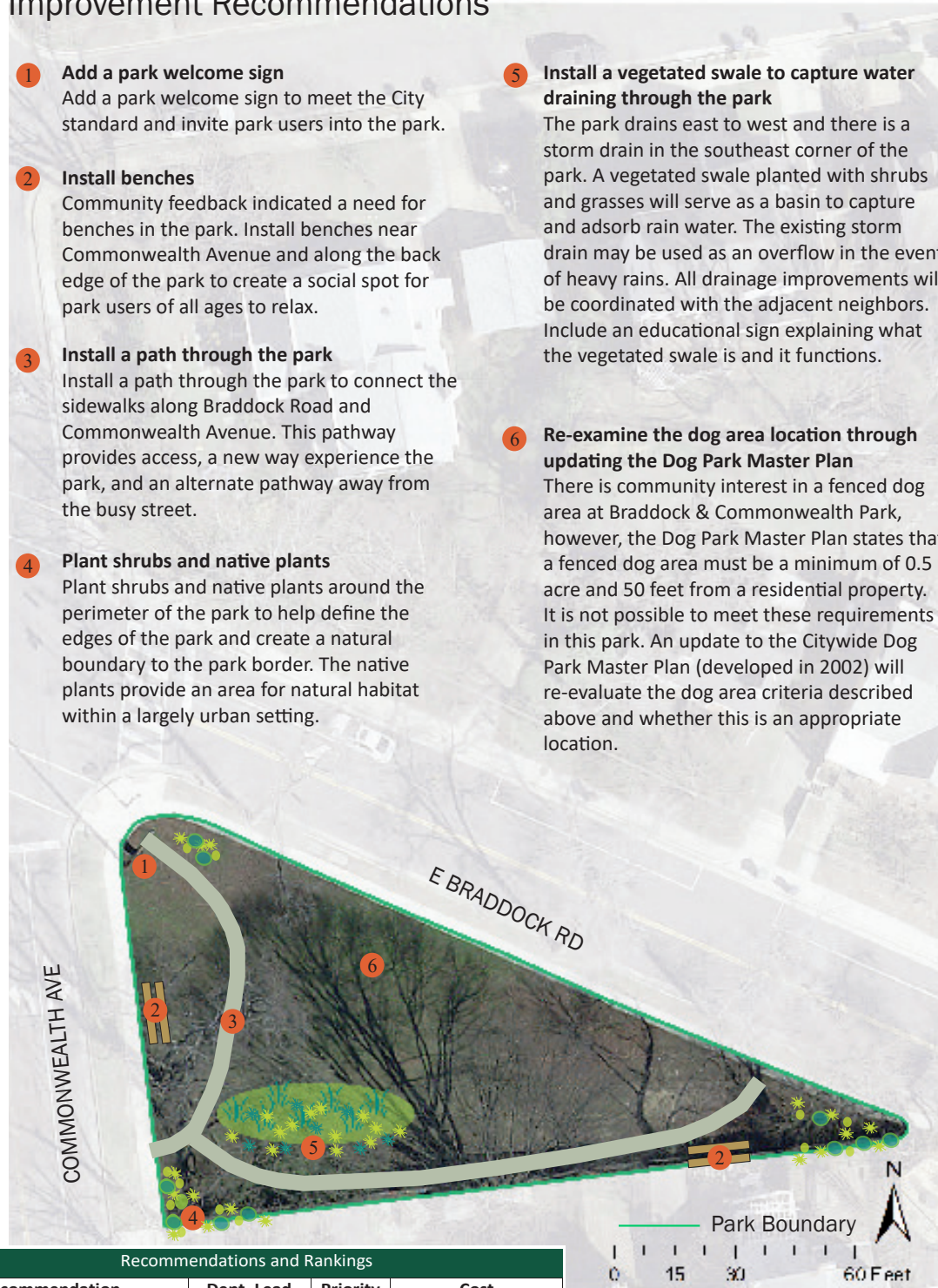
DRAFT

0 15 30 60 Feet

Braddock & Commonwealth Park

Improvement Recommendations

- 1 Add a park welcome sign**
 Add a park welcome sign to meet the City standard and invite park users into the park.
- 2 Install benches**
 Community feedback indicated a need for benches in the park. Install benches near Commonwealth Avenue and along the back edge of the park to create a social spot for park users of all ages to relax.
- 3 Install a path through the park**
 Install a path through the park to connect the sidewalks along Braddock Road and Commonwealth Avenue. This pathway provides access, a new way experience the park, and an alternate pathway away from the busy street.
- 4 Plant shrubs and native plants**
 Plant shrubs and native plants around the perimeter of the park to help define the edges of the park and create a natural boundary to the park border. The native plants provide an area for natural habitat within a largely urban setting.
- 5 Install a vegetated swale to capture water draining through the park**
 The park drains east to west and there is a storm drain in the southeast corner of the park. A vegetated swale planted with shrubs and grasses will serve as a basin to capture and adsorb rain water. The existing storm drain may be used as an overflow in the event of heavy rains. All drainage improvements will be coordinated with the adjacent neighbors. Include an educational sign explaining what the vegetated swale is and it functions.
- 6 Re-examine the dog area location through updating the Dog Park Master Plan**
 There is community interest in a fenced dog area at Braddock & Commonwealth Park, however, the Dog Park Master Plan states that a fenced dog area must be a minimum of 0.5 acre and 50 feet from a residential property. It is not possible to meet these requirements in this park. An update to the Citywide Dog Park Master Plan (developed in 2002) will re-evaluate the dog area criteria described above and whether this is an appropriate location.



Recommendations and Rankings				
#	Recommendation	Dept. Lead	Priority	Cost
1	Park welcome sign	RPCA	Medium	\$1,800 - \$2,419
2	Benches	RPCA	Low	\$7,280 - \$9,784
3	Path	RPCA	Medium	\$20,160 - \$27,093
4	Plant shrubs and natives	RPCA	High	\$4,500 - \$6,048
5	Vegetated swale	RPCA/TES	Medium	\$9,450 - \$12,700
6	Reexamine dog area	RPCA	High	TBD