

# 2304 East Randolph Avenue Park

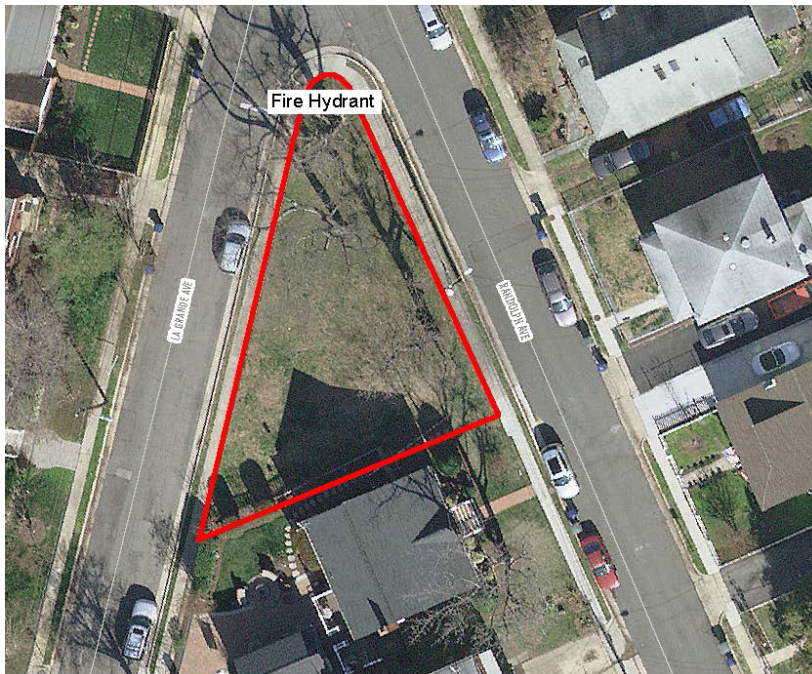
## History and Character

2304 East Randolph Avenue Park is in the Del Ray neighborhood.

The park is 0.09 acres and is bounded by sidewalks along East Randolph Avenue and La Grande Avenue, and by a private residence. The park features three large shade trees and open turf for active play. There is also a fire hydrant at the corner of East Randolph Avenue and La Grande Avenue.



## Existing Conditions Map



Note: Any new park or facility is referred to by the site's address until a name has been reviewed and approved through the City naming process.



# 2304 East Randolph Avenue Park

## Community Feedback

In Fall 2018, RPCA staff collected community feedback to understand how the park is used and how it could be improved in the future. The following information summarizes what was heard through an online survey and community workshop. Over 400 people responded to the survey in total, eight of which were specific to 2304 East Randolph Avenue Park. RPCA staff used the collected information to develop the draft park plans.

### What is currently NOT in the park that you would like to see there?

1. There is a lovely tree there (catalpa) that should stay, but it is otherwise grass. A more natural, vegetated landscape would be good. It might provide cover for small animals, such as rabbits, that share our urban environment.
2. Desirable trees - ones that do not create hazardous, nuisance debris
3. Ping pong, pickle ball, bocce ball some types of activities. More seating
4. Something, didn't even know it was a park



Above is a picture of the green Adirondack chairs with survey flyers attached. These chairs were placed in the pocket parks where seating was a recommendation of the plan.

Which of the following existing park elements would you like to preserve, enhance, or transform?

Element	Open Lawn	
Number of responses	4	
Value	Count	Percent
Preserve it	0	0
Enhance it	2	50
Transform it	2	50

## In 10 years, I would like this Park to...

(Top three rankings shown, based on a weighted score)

1. Help reduce environmental impacts from urban surroundings
2. Be a place to create social connections with neighbors
3. Provide organized recreational space

# 2304 East Randolph Avenue Park

Which of the following existing proposed park elements do you love, like, or not like?

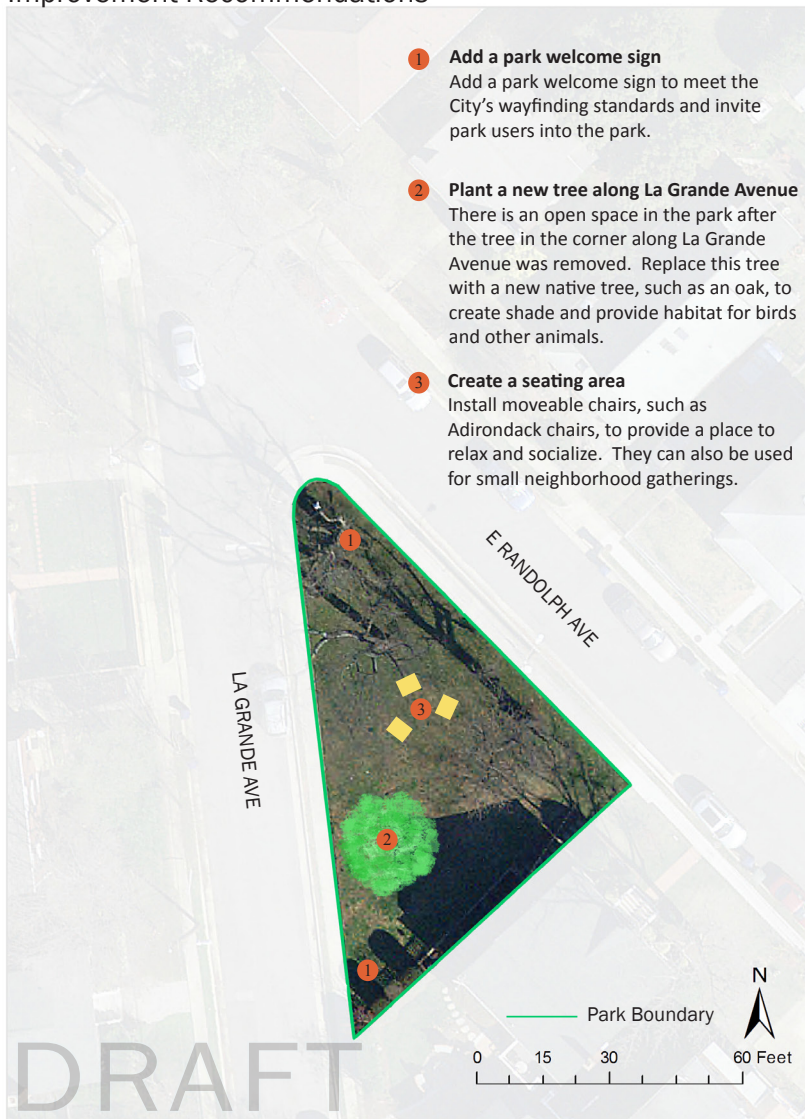
Park Welcome Sign			Trees		
Recommendation	Count	Percent	Recommendation	Count	Percent
I love it!	12	34	I love it!	20	59
I like it	17	49	I like it	7	21
I don't like it	6	17	I don't like it	7	21

Seating area		
Recommendation	Count	Percent
I love it!	11	32
I like it	10	29
I don't like it	13	38

In the summer of 2019 RPCA staff collected community feedback on the draft recommendations for improving this pocket park. The following information summarizes what was heard through online surveys and community feedback (see appendix for full results). The city received 716 responses in total, 35 of which were specific to 2304 East Randolph Avenue Park.

## Improvement Recommendations



Based on information from the summer input phase, staff updated the plan to best represent current and future community needs. A major change to the draft park plan is the location of the seating and the switch to movable seating. Community feedback indicated a desire for an open field. Movable seating allows for both seating and open space.

# 2304 East Randolph Avenue Park

## Improvement Recommendations

- 1 Add a park welcome sign**  
 Add a park welcome sign to meet the City standard and invite park users into the park.
- 2 Plant a new tree along La Grande Avenue**  
 A tree in the corner along La Grande Avenue was recently removed. Replace this tree with a new native tree, such as an oak, to create shade and provide habitat for birds and other animals.
- 3 Create a seating area**  
 Install moveable chairs to provide a place to relax and socialize. Chairs will be located in the northern corner to maintaining open space in throughout the rest of the park.



Recommendations and Rankings				
#	Recommendation	Dept. Lead	Priority	Cost
1	Add a park welcome sign	RPCA	Medium	\$1,800 - \$2,419
2	Plant a new tree along La Grande Avenue	RPCA	High	\$780 - \$1,048
3	Create a seating area	RPCA	Medium	\$2,800 - \$3,763