

## Fort Ward Park and Museum Area Management Plan



The City of Alexandria, Virginia

October 2014

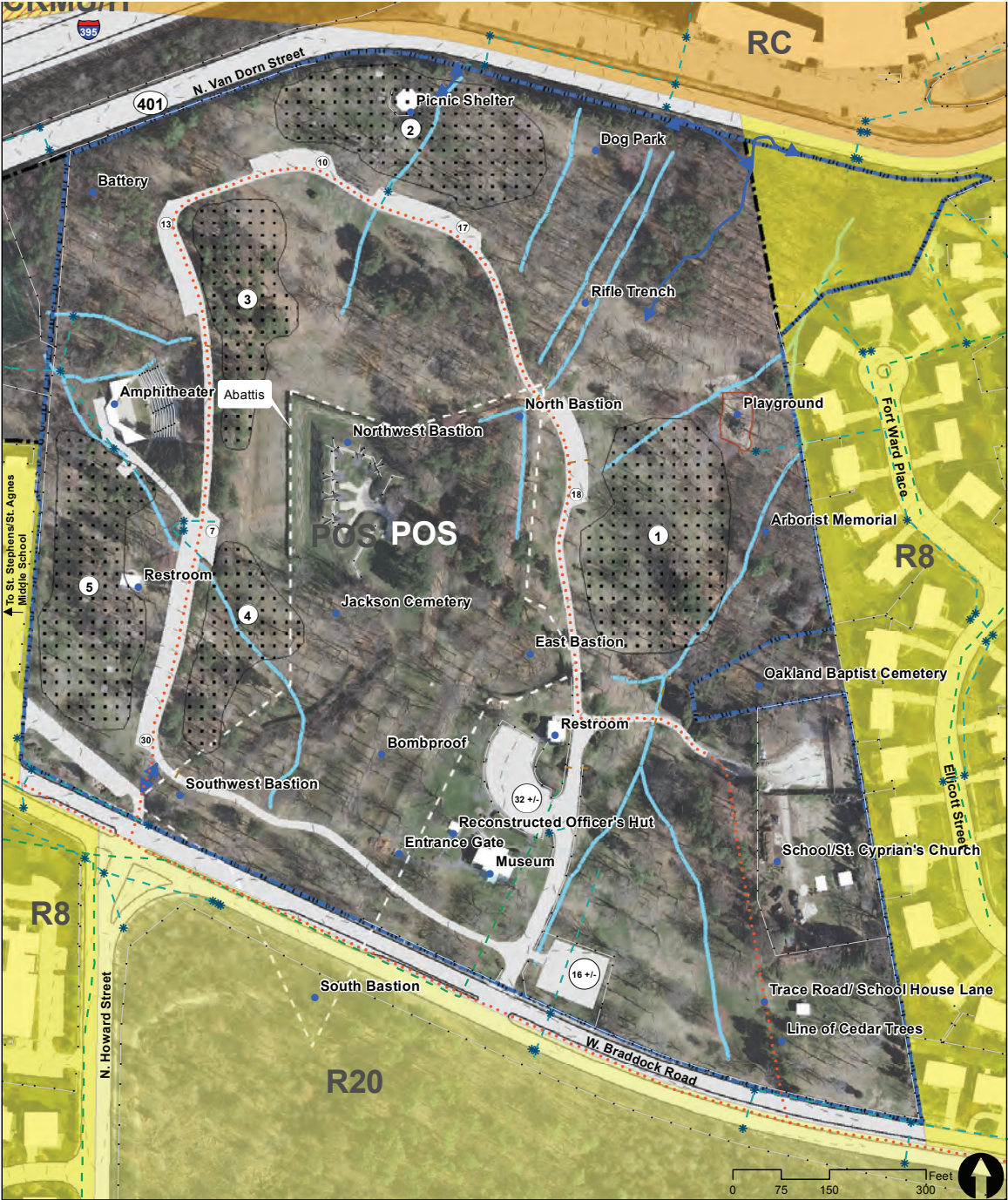
**FINAL DRAFT**

## SECTION II 8. PLATES

# Table of Contents

<b>8. Plates</b>	<b>II.8-i</b>
Plate 1. Existing Conditions/Adjacent Land Use	II-8.1
Plate 2. Synthesis of Archaeological Resources + ORAR Slope Intervals	II-8.2
Plate 3. Summary of Existing Natural Resource Conditions	II-8.3
Plate 4. Existing Drainage Patterns + Watersheds	II-8.4
Plate 5. ORAR Slope Intervals	II-8.5
Plate 6. Aerial Photograph 1937	II-8.6
Plate 7. Aerial Photograph 1949	II-8.7
Plate 8. OHA Mapping - Fort Ward Cultural Resources - Native American	II-8.8
Plate 9. OHA Mapping - Fort Ward Cultural Resources - Civil War	II-8.9
Plate 10. OHA Mapping - Fort Ward Cultural Resources - "The Fort Community"	II-8.10
Plate 11. OHA Mapping - Fort Ward Cultural Resources - Identified and Potential Cemeteries	II-8.11
Plate 12. OHA Mapping - Fort Ward Cultural Resources - Cultural Resource Protection Levels	II-8.12
Plate 13. Native American Resource Areas (drawn from OHA data)	II-8.13
Plate 14. Civil War Features (drawn from OHA data)	II-8.14
Plate 15. "The Fort" Community Features (drawn from OHA data)	II-8.15
Plate 16. Recreational Features	II-8.16
Plate 17. Natural Features	II-8.17
Plate 18. Composite of Features	II-8.18
Plate 19. MOU Boundaries - Proposed for 2015	II-8.19
Plate 20. Management Zones Land Cover Definition	II-8.20
Plate 21. Aeration	II-8.21
Plate 22. Ground Disturbing Activities	II-8.22
Plate 23. Leaf Litter Disposal Management Areas	II-8.23
Plate 24. Soft Path System	II-8.24
Plate 25. Potential Soft Path System and Enhancement Opportunities	II-8.25





Fort Ward Park and Museum  
Area Management Plan

City of Alexandria, Virginia

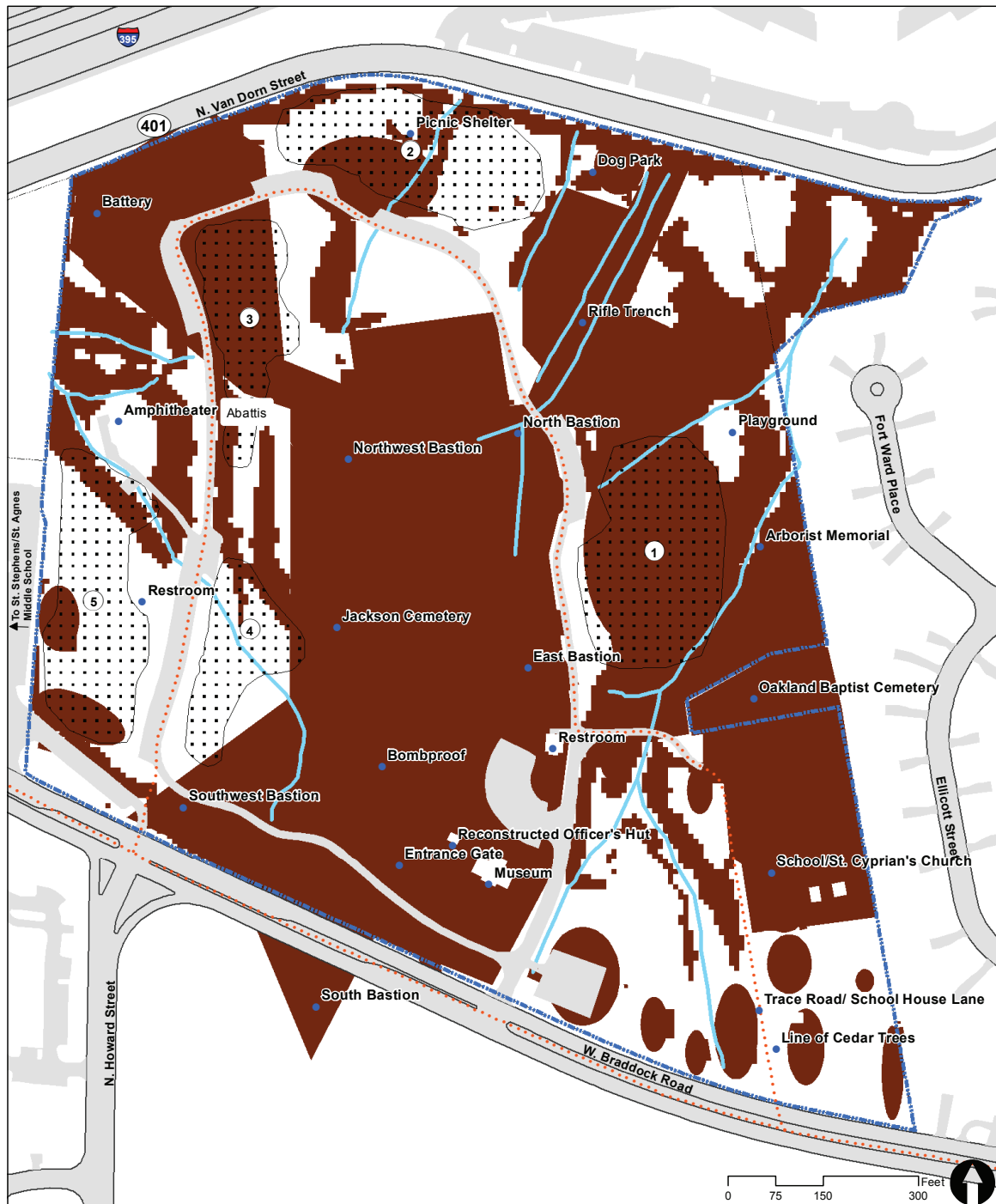
Existing Conditions/  
Adjacent Land Use

- |                          |                                     |                       |                       |               |
|--------------------------|-------------------------------------|-----------------------|-----------------------|---------------|
| Management Plan Boundary | Park Feature                        | <b>Drainage lines</b> | <b>Sanitary lines</b> | <b>Zoning</b> |
| Park Parcel              | Picnic Area                         | Culvert               | Collector             | CRMU/H        |
| Road or pavement         | Alexandria Heritage Trail           | Traditional Pipe      | Interceptor           | R20           |
| Number of parking spaces | Pedestrian access &/or social trail | Drainage inlet        | Drainage flowlines    | R8            |
| Parcel                   | Play ground                         |                       |                       | RC            |
| Contour 2'               | Fence, Wall, Retaining Wall         |                       |                       |               |

Lardner/Klein Landscape Architects, PC  
in association with  
Heritage Strategies, Inc., John Milner Associates, Inc. and Barbara Franco

GIS Sources: City of Alexandria

Plate 1. Existing Conditions/Adjacent Land Use



## Fort Ward Park and Museum Area Management Plan

City of Alexandria, Virginia

## Synthesis of Archaeological Resources + ORAR\* Slope Intervals

- Management Plan Boundary
- Park Feature
- Park Parcel
- Road or pavement
- Drainage flowlines
- Picnic Area
- Alexandria Heritage Trail
- Archaeological Resources + Slopes over 10%\*

\*Slopes greater than 1:10 (10%) are too steep for outdoor recreation access routes.

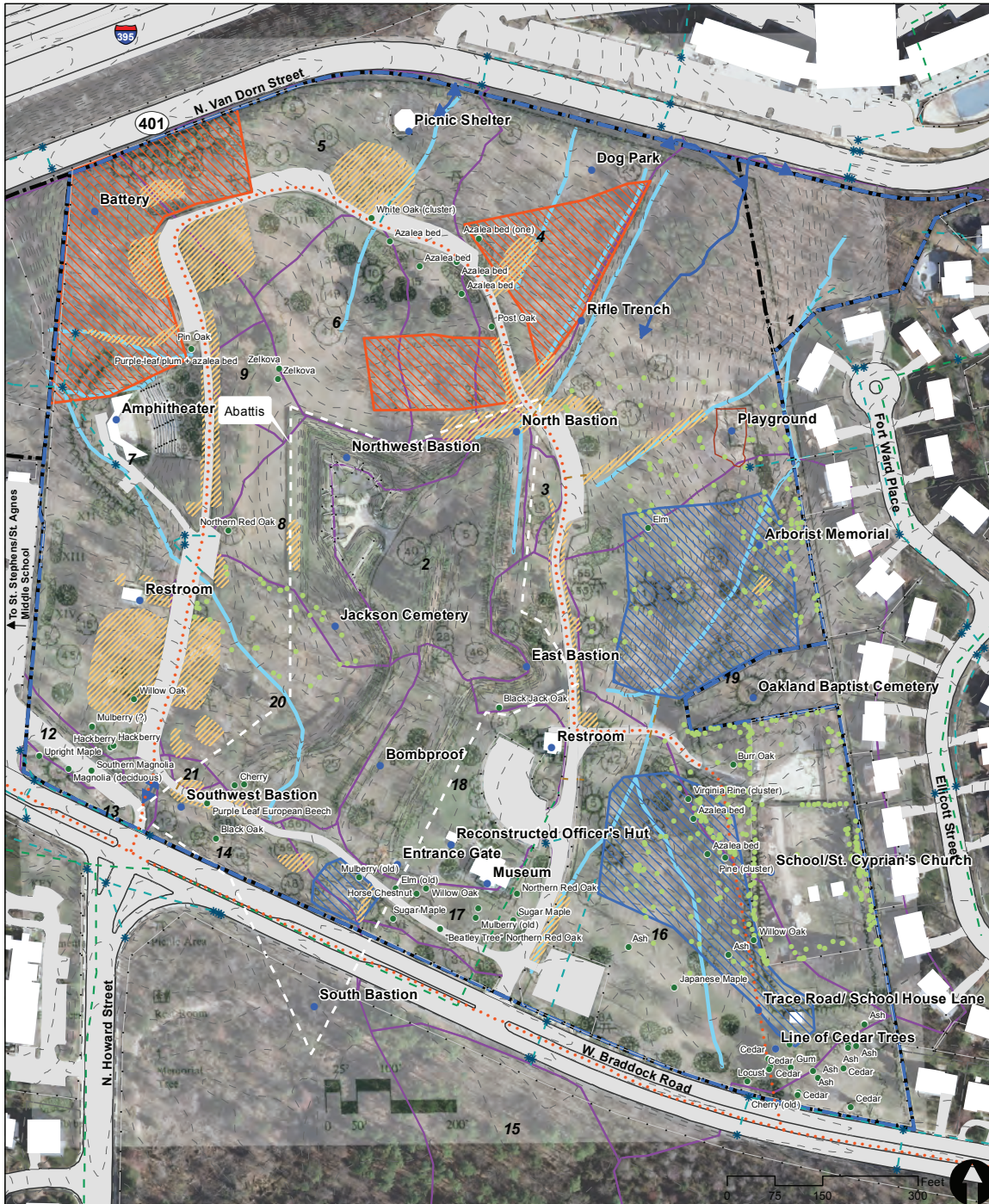


Lardner/Klein Landscape Architects, PC  
in association with  
Heritage Strategies, Inc., John Milner Associates, Inc. and Barbara Franco

GIS Sources: City of Alexandria

## Plate 2. Synthesis of Archaeological Resources + ORAR Slope Intervals





## Fort Ward Park and Museum Area Management Plan

City of Alexandria, Virginia

## Summary of Existing Natural Resource Conditions

Management Plan Boundary	Park Feature	Drainage flowlines	Drainage lines	Woodland Glade (mowed annually in fall)*
Park Parcel	Alexandria Heritage Trail	Drainage area	Culvert	Meadows (mowed annually in fall)*
Road or pavement	Pedestrian access &/or social trail	Sanitary lines	Traditional Pipe	<b>Tree Inventory</b>
Parcel	Play ground	Collector	Drainage inlet	Tree or Azalea bed (LKLA inventory 6/2013)***
Contour 2'	Fence, Wall, Retaining Wall	Interceptor	Erosion and/or compacted soil**	Tree (Archeology-City of Alexandria)

NOTE: City of Alexandria Arboretum Map Brochure is overlaid on aerial photo for reference.

**LKLA** Lardner/Klein Landscape Architects, PC  
in association with  
Heritage Strategies, Inc., John Milner Associates, Inc. and Barbara Franco

\*Woodland glade, meadows, and management source: X  
\*\*Erosion and/or compacted soil layer was generated from a field inventory by LKLA in June of 2013.  
\*\*\*Points indicate the general locations (hand-held GPS) of trees and azalea beds.

GIS Sources: City of Alexandria

## Plate 3. Summary of Existing Natural Resource Conditions

October 2014

**FINAL DRAFT**

II-8.3





## Fort Ward Park and Museum Area Management Plan

City of Alexandria, Virginia

## Existing Drainage Patterns + Watersheds

Management Plan Boundary	Play ground	Sanitary lines	Drainage lines	Drainage inlet
Park Parcel	Fence, Wall, Retaining Wall	Collector	Culvert	Erosion and/or compacted soil**
Road or pavement	Stream centerline (approximate)*	Interceptor	Traditional Pipe	Management Plan Boundary
Contour 2'				



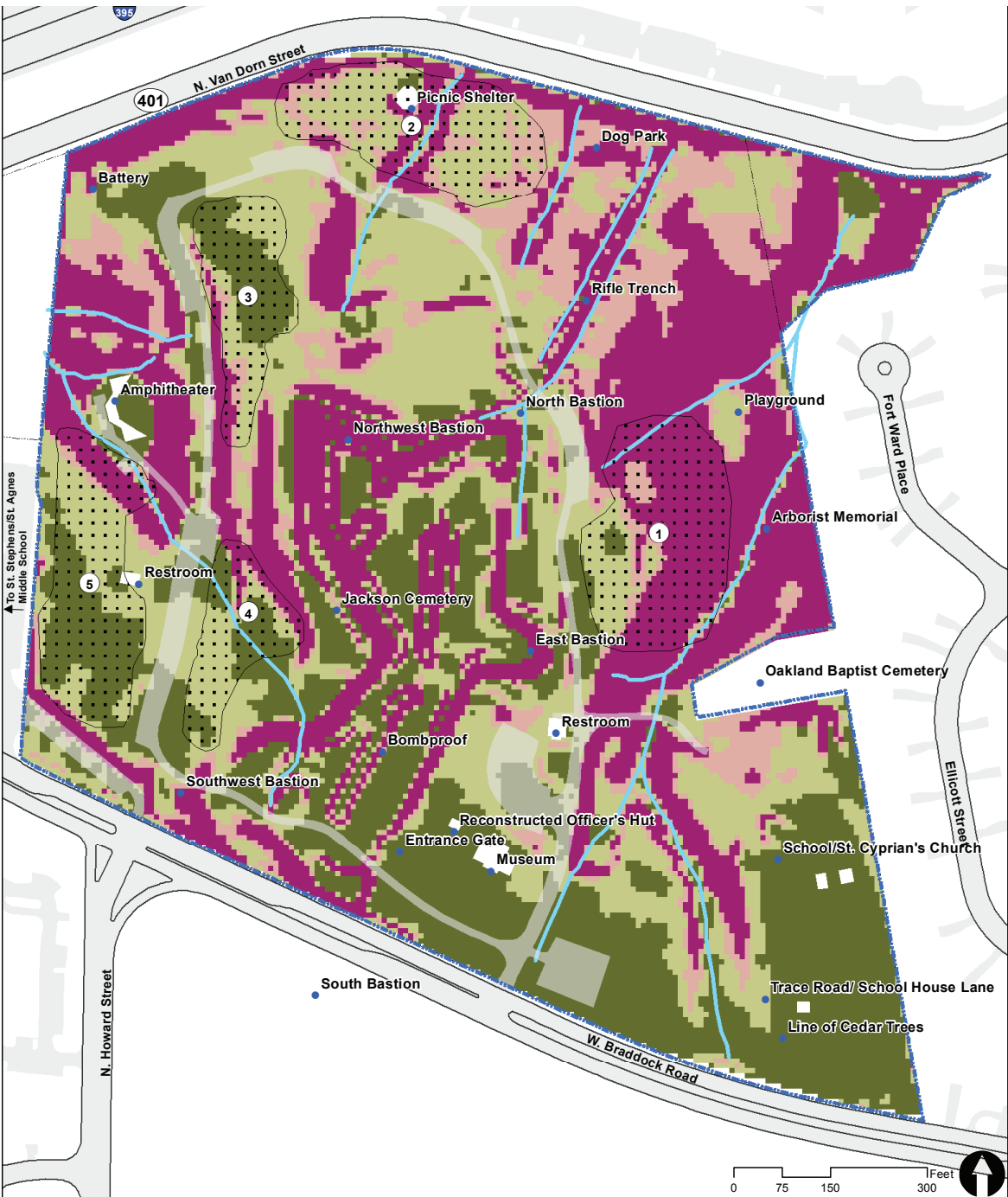
Lardner/Klein Landscape Architects, PC  
in association with  
Heritage Strategies, Inc., John Milner Associates, Inc. and Barbara Franco

NOTES:  
\*Stream centerline layer was traced from the map, "Fort Ward Park - Native American Cultural Resources" from the Inventory of Historical Resources - Fort Ward Park WORKING DRAFT - 9/10/09.  
\*\*Erosion and/or compacted soil layer was generated from a field inventory by L/KLA in June of 2013.

GIS Sources: City of Alexandria, USDA

## Plate 4. Existing Drainage Patterns + Watersheds





# Fort Ward Park and Museum Area Management Plan

City of Alexandria, Virginia

- |  |                          |  |                                     |
|--|--------------------------|--|-------------------------------------|
|  | Management Plan Boundary |  | Percent Slope (per ORAR guidelines) |
|  | Road or pavement         |  | 0% - 5%                             |
|  | Drainage flowlines       |  | 5.000000001% - 8.3%                 |
|  | Park Feature             |  | 8.300000001% - 10%                  |
|  | Picnic Area              |  | 10.000000001% - 80%                 |
|  | Contour 2'               |  |                                     |

## ORAR\* Slope Intervals

\* According to the Access Board Outdoor Recreation Access Route (ORAR) Guidelines for Outdoor Developed Areas (Oct. 19, 2009): "1016.7.1 Running Slope. The running slope of any segment of an outdoor recreation access route shall not be steeper than 1:10. Where the running slope of a segment of an outdoor recreation access route is steeper than 1:20, the maximum length of the segment shall be in accordance with Table 1016.7.1, and a resting interval complying with 1016.8 shall be provided at each end of the segment." Slope intervals shown on this map correspond with the slope guidelines for Outdoor Recreation Access Routes indicated above. Slopes steeper than 1:20 (5%) but not steeper than 1:12 (8.3%) can have a maximum segment length of 50 feet. Slopes steeper than 1:12 (8.3%) but not steeper than 1:10 (10%) can have a maximum segment length of 30 feet. Slopes greater than 1:10 (10%) are too steep for outdoor recreation access routes.

Lardner/Klein Landscape Architects, PC  
in association with  
Heritage Strategies, Inc., John Milner Associates, Inc. and Barbara Franco

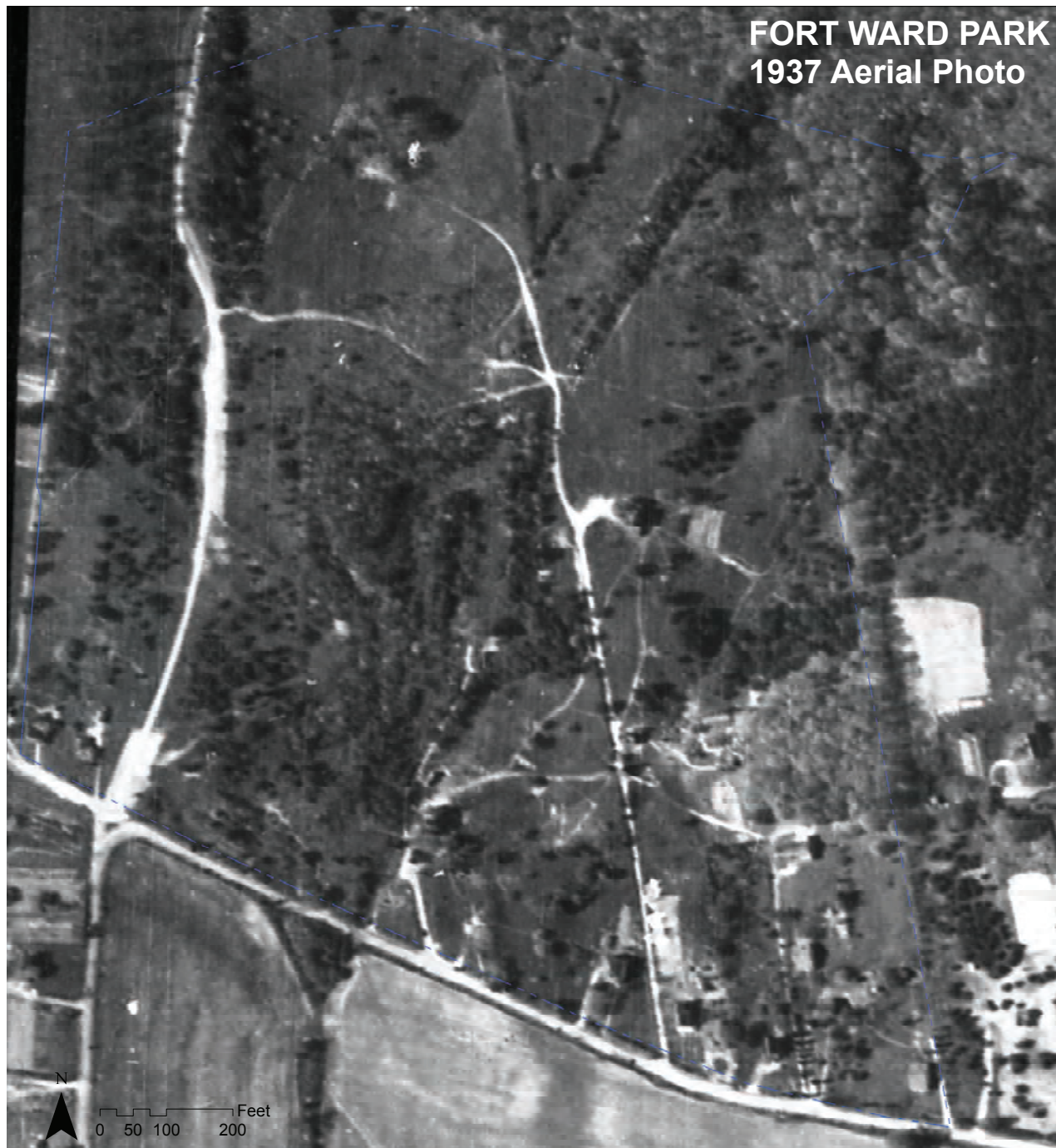
GIS Sources: City of Alexandria

## Plate 5. ORAR Slope Intervals

October 2014

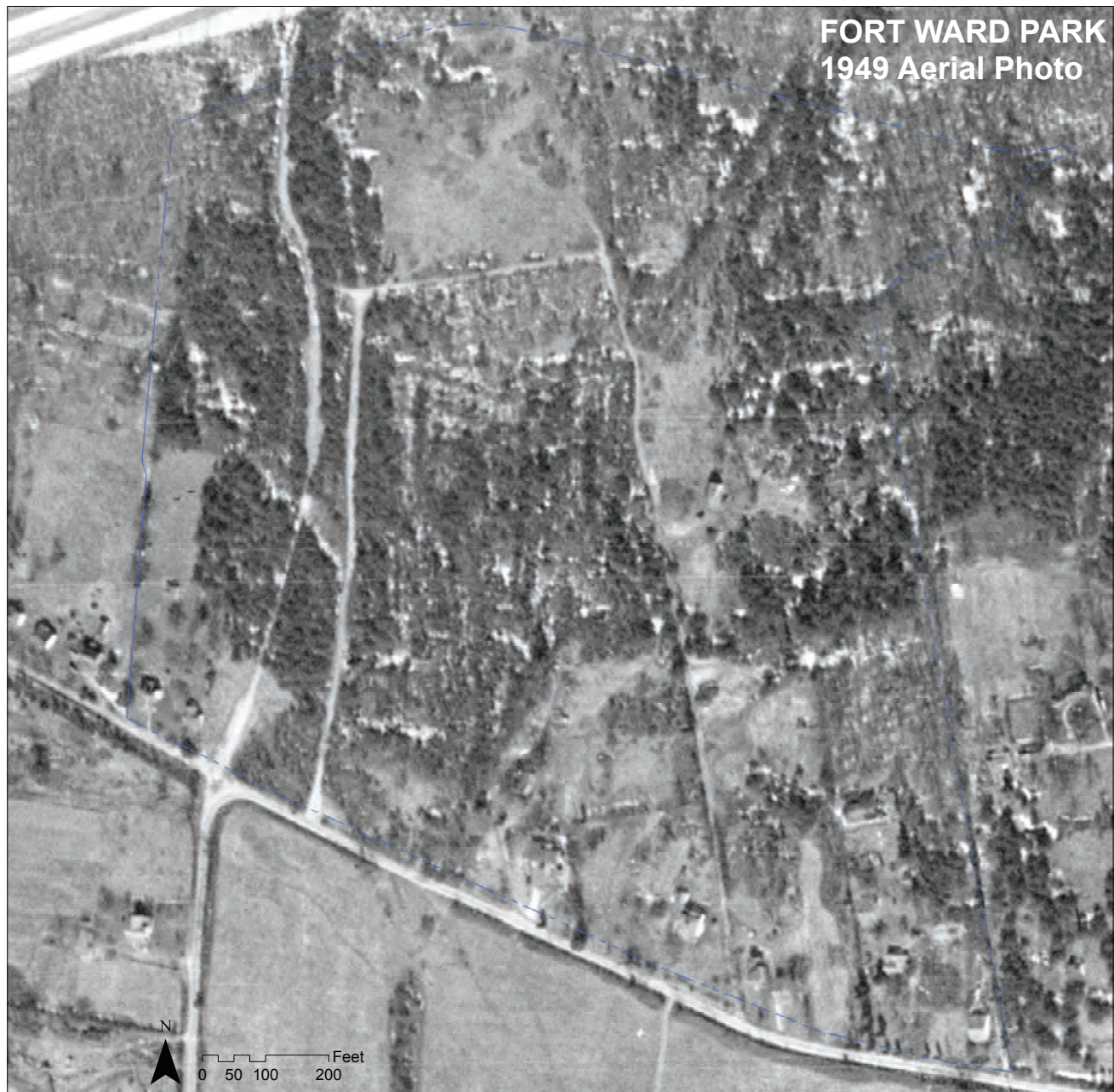
FINAL DRAFT

II-8.5



Aerial Photo of Fort Ward Park 1937





Aerial Photo of Fort Ward Park 1949

## Plate 7. Aerial Photograph 1949

October 2014

FINAL DRAFT

II-8.7





Plate 8. OHA Mapping - Fort Ward Cultural Resources - Native American



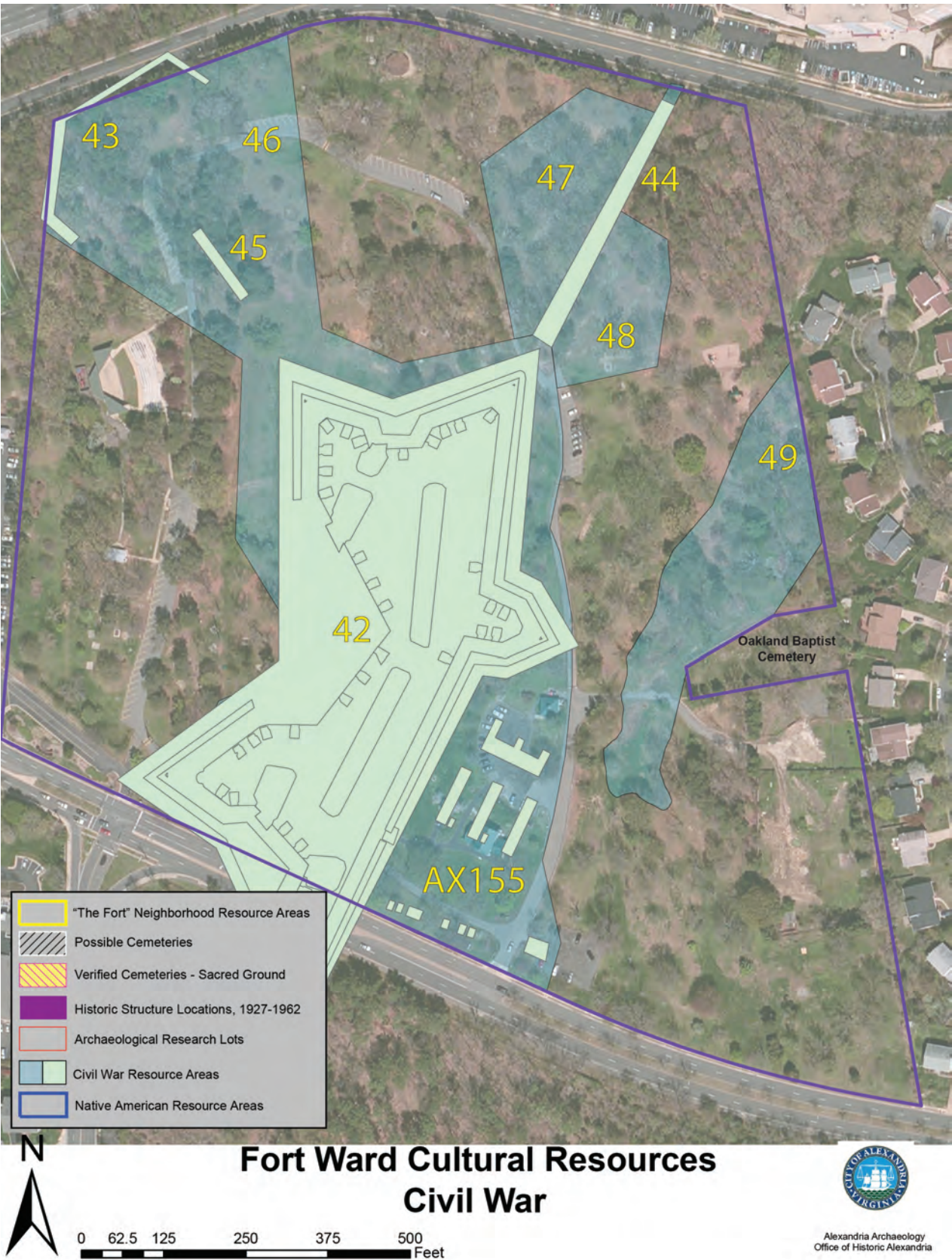


Plate 9. OHA Mapping - Fort Ward Cultural Resources - Civil War



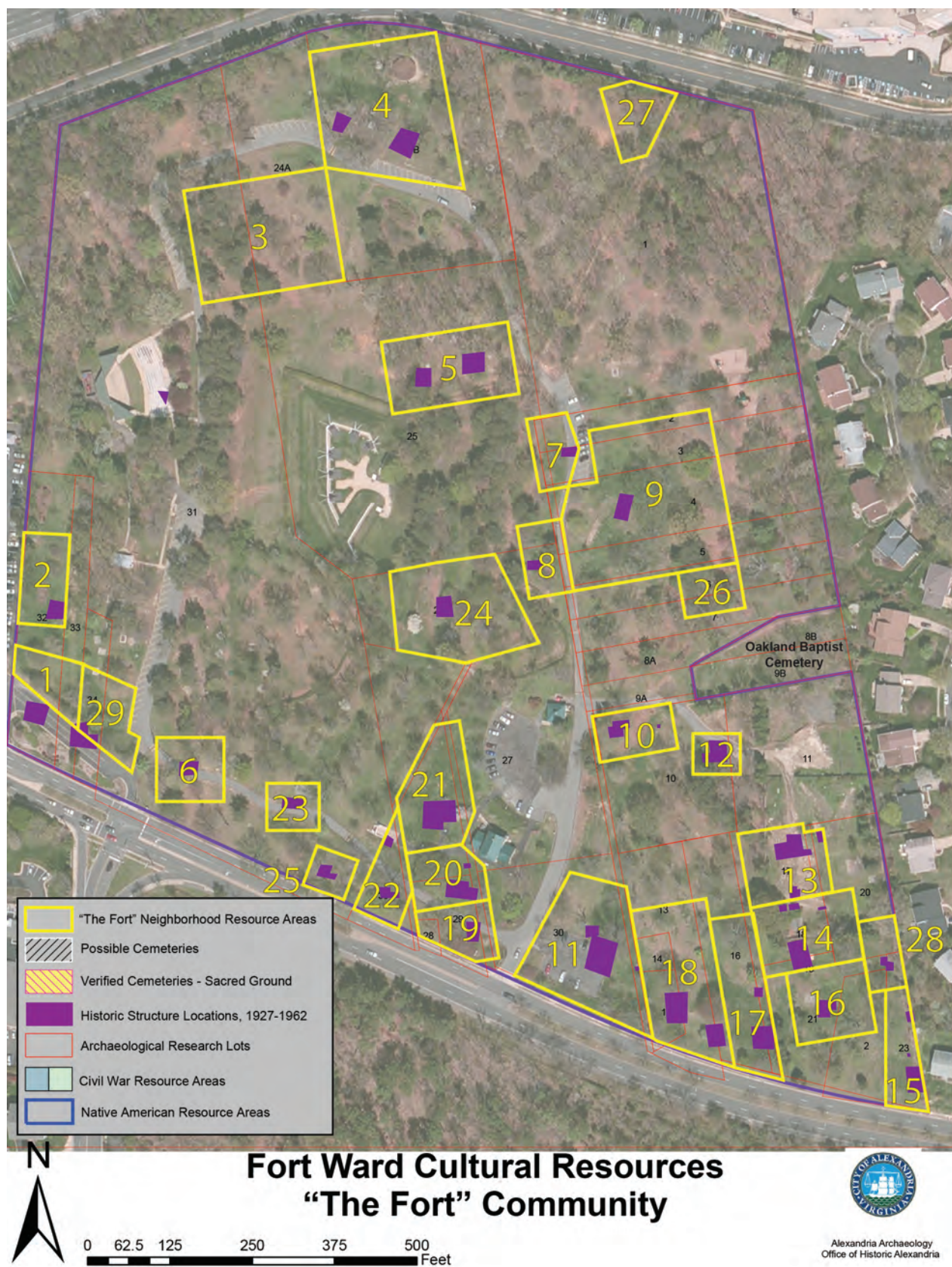


Plate 10. OHA Mapping - Fort Ward Cultural Resources -  
"The Fort Community"



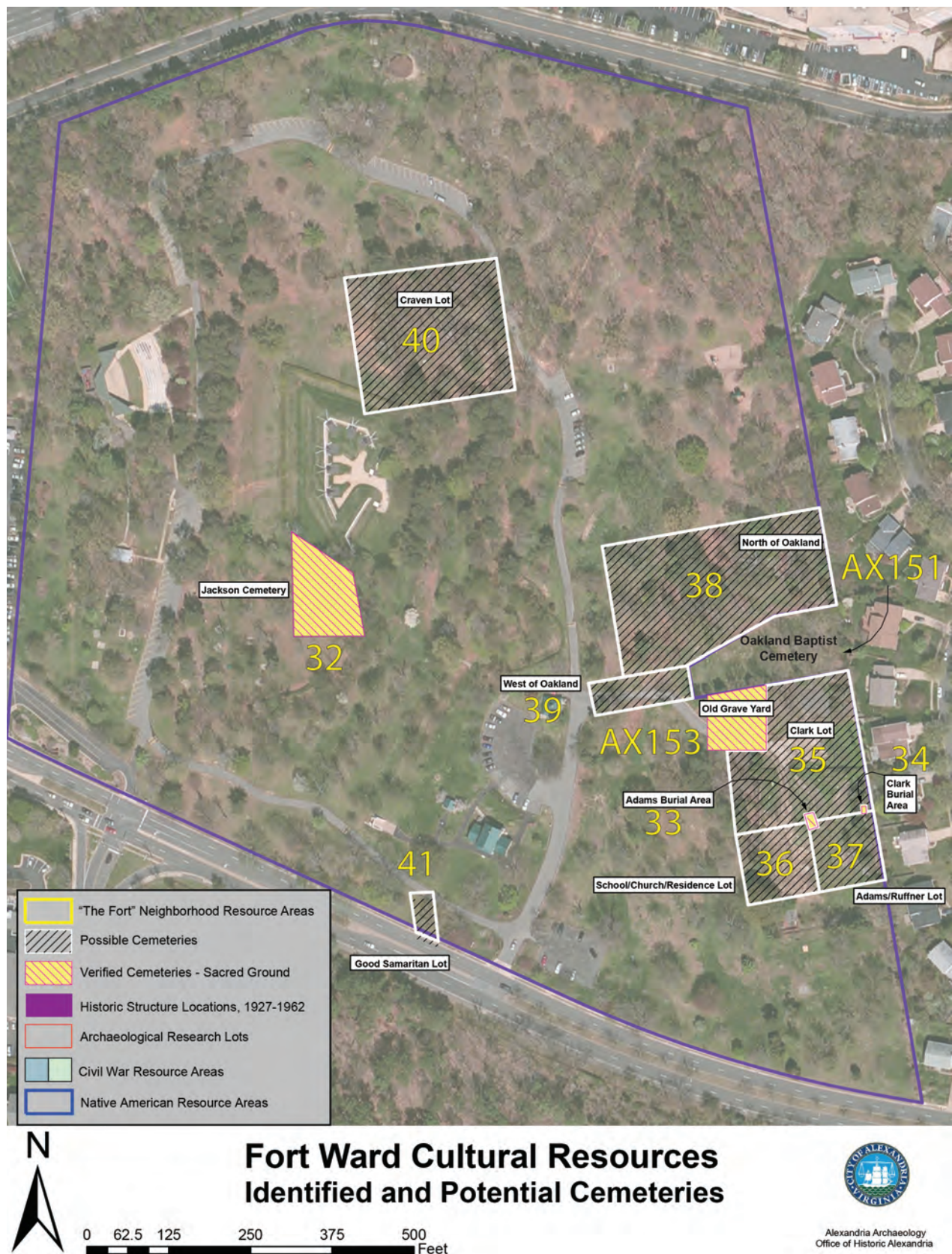


Plate 11. OHA Mapping - Fort Ward Cultural Resources - Identified and Potential Cemeteries



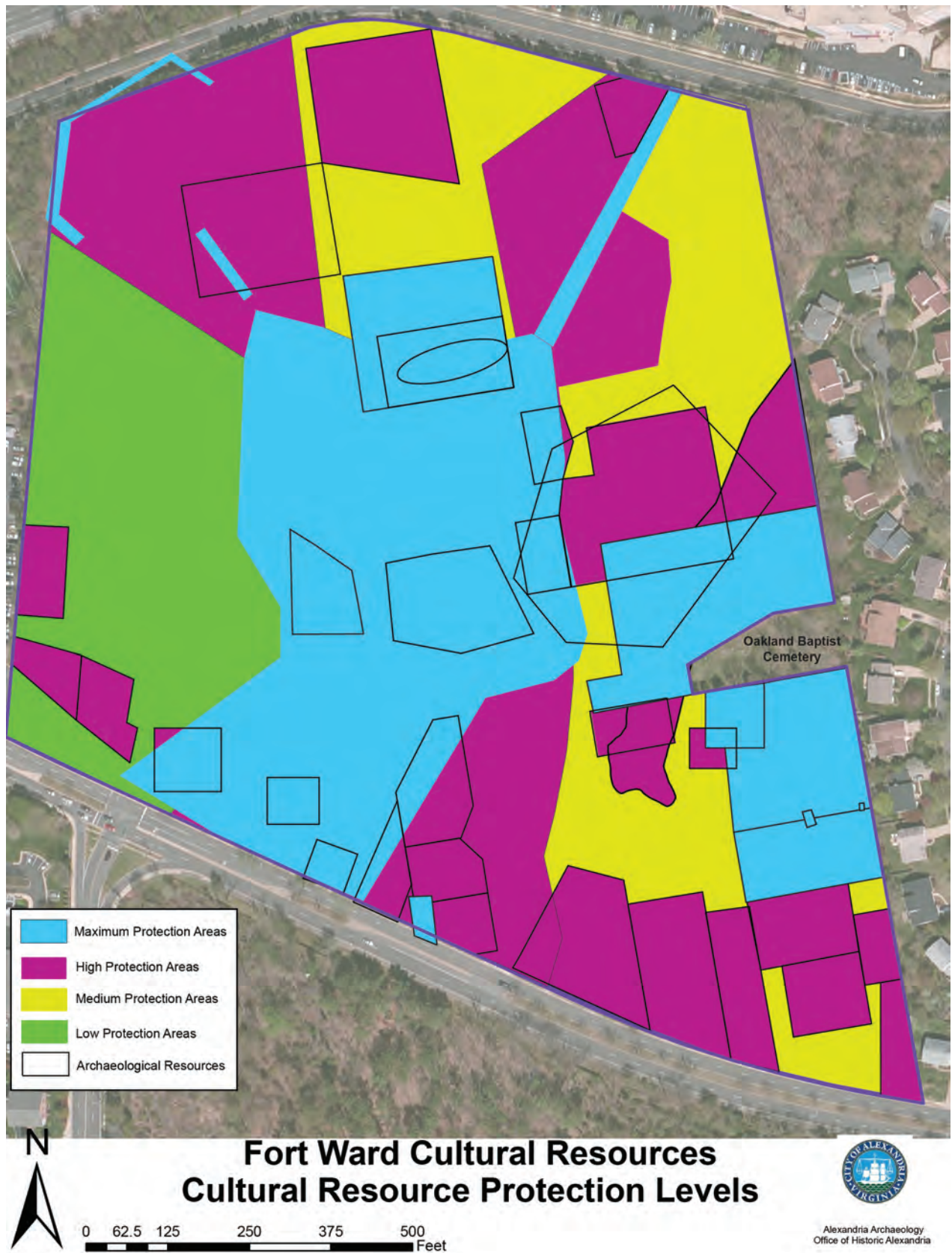
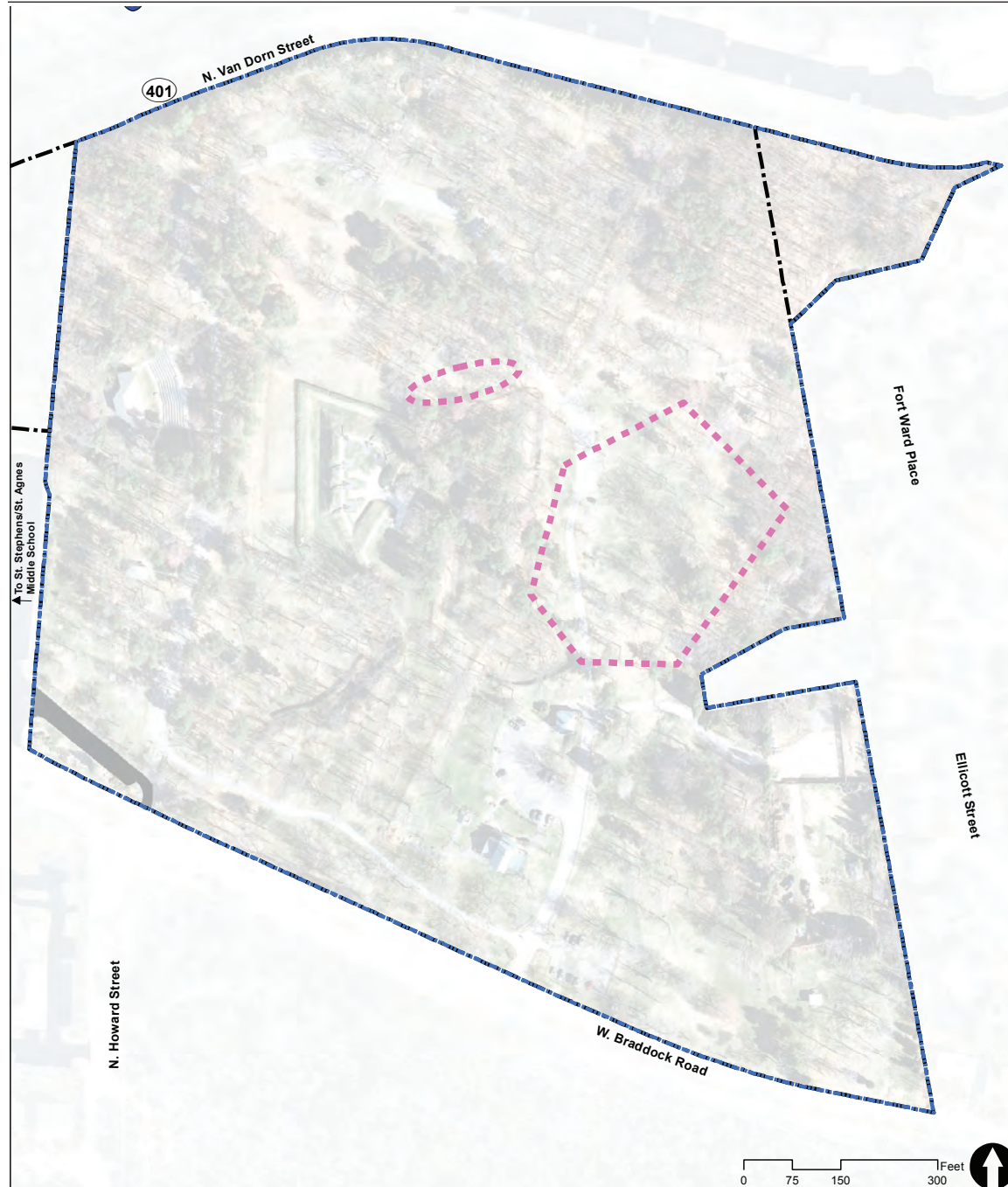


Plate 12. OHA Mapping - Fort Ward Cultural Resources -  
Cultural Resource Protection Levels





## Fort Ward Park and Museum Area Management Plan

City of Alexandria, Virginia



Management Plan Boundary



Park Parcel



Native American Resource Area

## Native American Resource Areas



Lardner/Klein Landscape Architects, PC  
in association with  
Heritage Strategies, Inc., John Milner Associates, Inc. and Barbara Franco

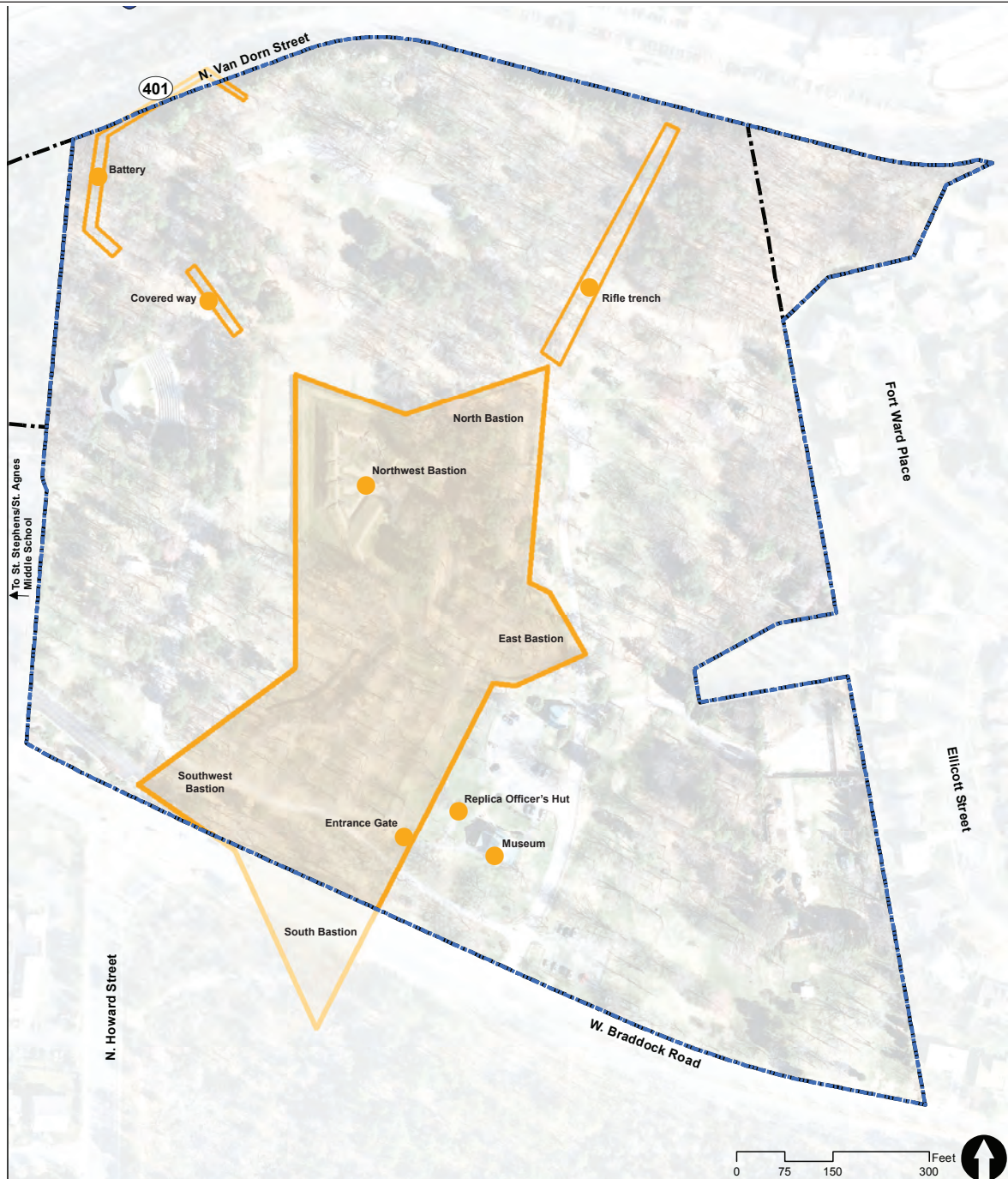
GIS Sources: City of Alexandria

## Plate 13. Native American Resource Areas (drawn from OHA data)

October 2014

FINAL DRAFT

II-8.13



## Fort Ward Park and Museum Area Management Plan

## Civil War Features

City of Alexandria, Virginia

- Management Plan Boundary
- Park Parcel
- Civil War Features
- Fort earthworks and interior features
- Exterior Fort earthworks

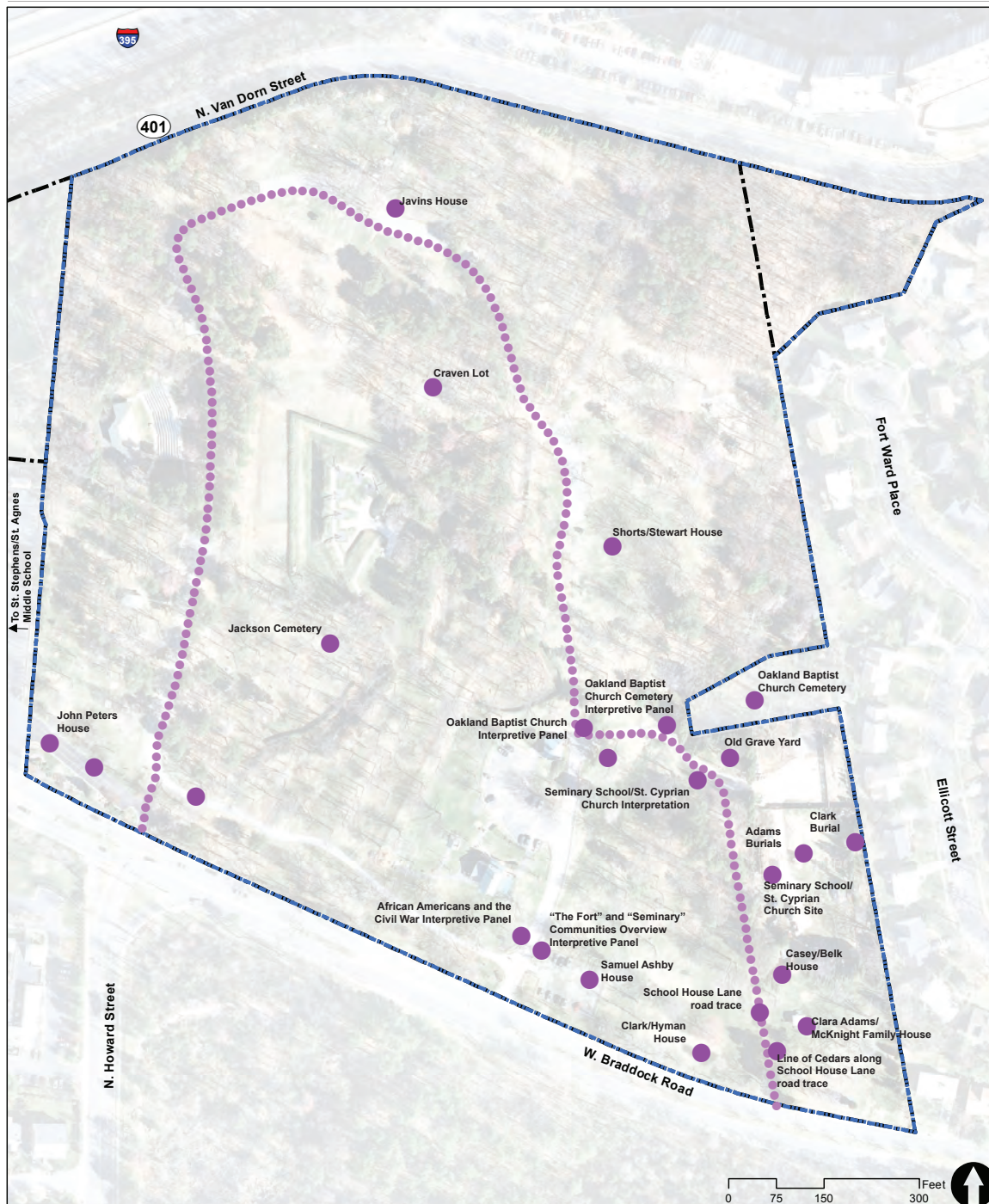


LKLA Lardner/Klein Landscape Architects, PC  
in association with  
Heritage Strategies, Inc., John Milner Associates, Inc. and Barbara Franco

GIS Sources: City of Alexandria

## Plate 14. Civil War Features (drawn from OHA data)





## Fort Ward Park and Museum Area Management Plan

## Fort Community Features

City of Alexandria, Virginia

Management Plan Boundary

Park Parcel

The Fort Community Features

"The Fort" Heritage Trail



Lardner/Klein Landscape Architects, PC

in association with

Heritage Strategies, Inc., John Milner Associates, Inc. and Barbara Franco

GIS Sources: City of Alexandria

## Plate 15. "The Fort" Community Features (drawn from OHA data)

October 2014

**FINAL DRAFT**

II-8.15



## Fort Ward Park and Museum Area Management Plan

## Recreational Features

City of Alexandria, Virginia

- Management Plan Boundary
- Park Parcel
- Park Road or Parking
- Number of parking spaces
- Recreational Feature
- Picnic Area
- Restroom



Lardner/Klein Landscape Architects, PC  
in association with  
Heritage Strategies, Inc., John Milner Associates, Inc. and Barbara Franco

GIS Sources: City of Alexandria





# Fort Ward Park and Museum Area Management Plan

## Natural Features

City of Alexandria, Virginia

- Management Plan Boundary
- Park Parcel
- Drainage flowlines
- Contour 2'

- Tree Inventory
  - Tree or Azalea bed (LKLA inventory 6/2013)\*
  - Tree (Archeology-City of Alexandria)

- Woodland Glade (mowed annually in fall)\*\*
- Meadows (mowed annually in fall)\*\*

\*Points indicate the general locations (hand-held GPS) of trees and azalea beds.  
\*\*Woodland glade and meadows polygons are in draft form--an update is forthcoming.  
Only one meadow remains as of 2013.



Lardner/Klein Landscape Architects, PC  
in association with  
Heritage Strategies, Inc., John Milner Associates, Inc. and Barbara Franco

NOTE: City of Alexandria Arboretum Map Brochure is overlaid on aerial photo for reference.

GIS Sources: City of Alexandria

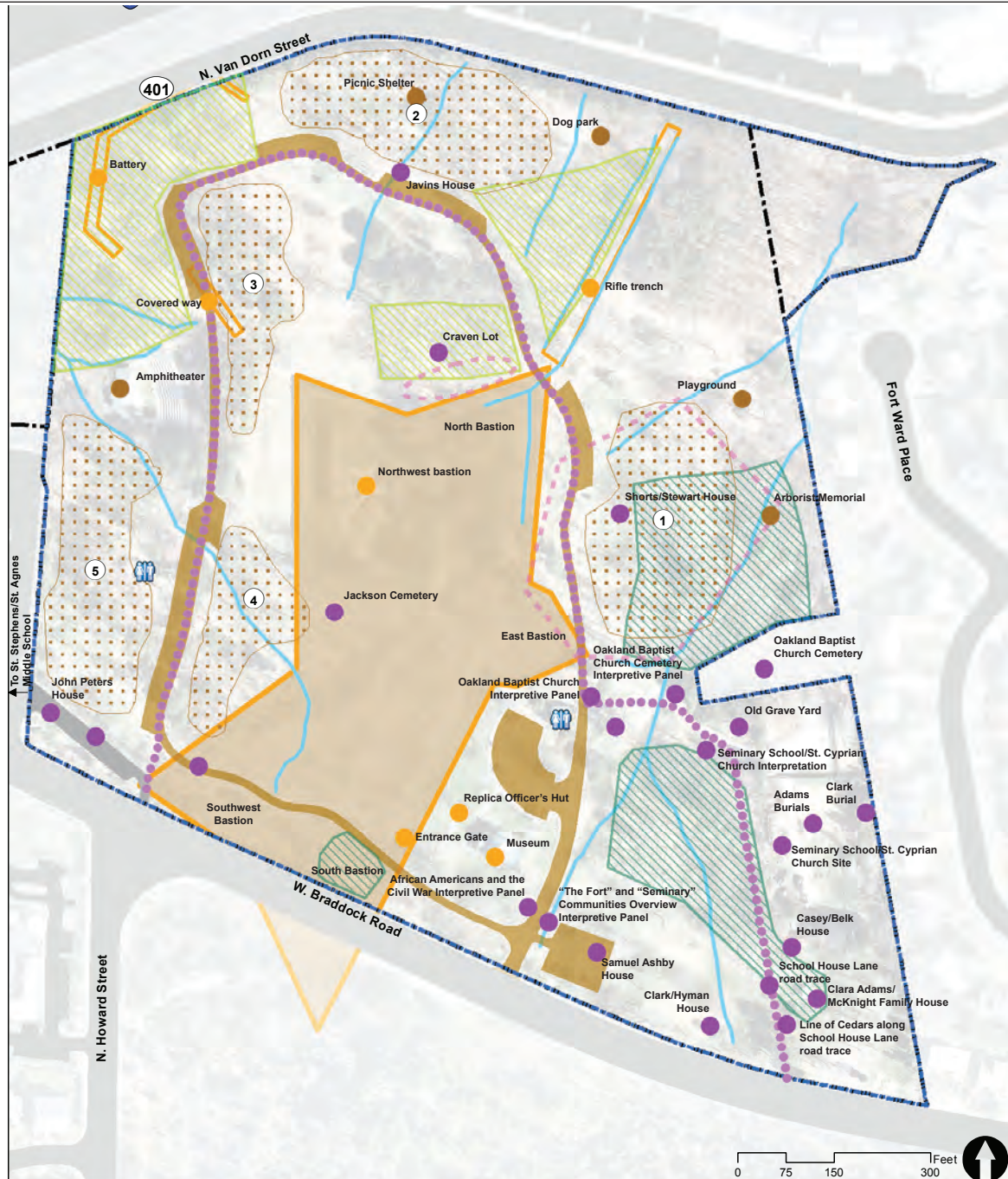
## Plate 17. Natural Features

October 2014

FINAL DRAFT

II-8.17





## Fort Ward Park and Museum Area Management Plan

## Composite of Features

City of Alexandria, Virginia

- Management Plan Boundary
- Park Parcel
- Park Road or Parking
- Drainage flowlines

- Tree Inventory
- Tree or Azalea bed (LKLA inventory 6/2013)\*
- Tree (Archeology-City of Alexandria)
- Woodland Glade (mowed annually in fall)\*\*
- Meadows (mowed annually in fall)\*\*

- The Fort Community Features
- The Fort Heritage Trail
- Civil War Features
- Fort earthworks and interior features
- Exterior Fort earthworks
- Native American Resource
- Recreational Feature
- Picnic Area
- Restroom



Lardner/Klein Landscape Architects, PC  
in association with  
Heritage Strategies, Inc., John Milner Associates, Inc. and Barbara Franco

\*Points indicate the general locations (hand-held GPS) of trees and azalea beds.

\*\*Woodland glade and meadows polygons are in draft form--an update is forthcoming.  
GIS Sources: City of Alexandria





*Fort Ward Park and Museum  
Area Management Plan*

**MOU Boundaries**

*City of Alexandria, Virginia*

- Management Plan Boundary
- MOU Boundary OHA responsibility\*
- Park Parcel
- Contour 2'
- Potential Soft Path

\*NOTE: All other areas RPCA responsibility

Lardner/Klein Landscape Architects, PC  
in association with  
Heritage Strategies, Inc., John Milner Associates, Inc. and Barbara Franco

GIS Sources: City of Alexandria

**Plate 19. MOU Boundaries - Proposed for 2015**





## Fort Ward Park and Museum Area Management Plan

City of Alexandria, Virginia

## Management Zones Land Cover Definition

- |                          |                |                     |
|--------------------------|----------------|---------------------|
| Management Plan Boundary | Woodlands      | Turf not irrigated  |
| Park Parcel              | Meadows        | Arborist's Memorial |
| Contour 2'               | Irrigated turf |                     |
| Potential Soft Path      |                |                     |

**LKLA** Lardner/Klein Landscape Architects, PC  
in association with  
Heritage Strategies, Inc., John Milner Associates, Inc. and Barbara Franco

GIS Sources: City of Alexandria

## Plate 20. Management Zones Land Cover Definition





*Fort Ward Park and Museum  
Area Management Plan*

**Aeration**

City of Alexandria, Virginia

- Management Plan Boundary
- Park Parcel
- Contour 2'
- No Aeration Area\*

\*NOTE: "No Aeration Areas" were identified in a sketch by Fran Bromberg 01/10/14 via email. No Aeration Areas at the battery would have to be surveyed for a more accurate location. Aeration is not allowed on the elevated areas of the fort, rifle trench, battery, nor the old grave yard, Adams burial area or Clark burial area.

Lardner/Klein Landscape Architects, PC  
in association with  
Heritage Strategies, Inc., John Milner Associates, Inc. and Barbara Franco

GIS Sources: City of Alexandria

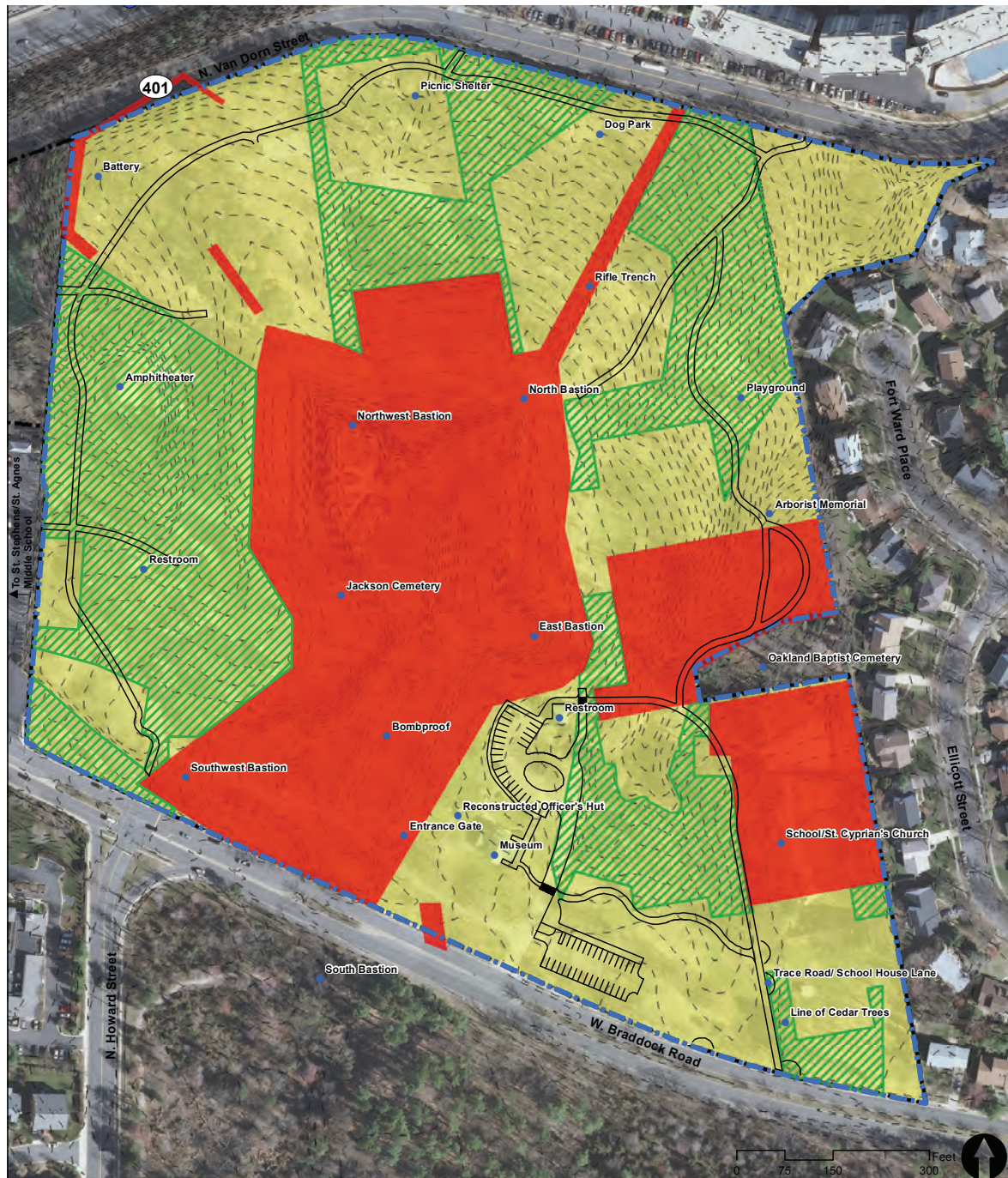
**Plate 21. Aeration**

October 2014

**FINAL DRAFT**

II-8.21





## Fort Ward Park and Museum Area Management Plan

City of Alexandria, Virginia

Management Plan Boundary

Park Parcel

Potential Soft Path

Minimal Ground Disturbing Activities (such as aeration, stump grinding, tree planting, and soft path construction)\*

No Ground Disturbing Activities Allowed without further review by OHA

No Ground Disturbing Activities Allowed except for placement of formal interpretive elements with archaeological review and investigation by OHA

Lardner/Klein Landscape Architects, PC  
in association with

Heritage Strategies, Inc., John Milner Associates, Inc. and Barbara Franco

## Ground Disturbing Activities

\*Minimal Ground Disturbing Activities source: Draft Summary - Archaeological Investigations Fort Ward Park spreadsheet, Fran Bromberg, Jan. 2013.

General Note: Areas denoted as "Minimal Ground Disturbing Activities" may contain impervious surfaces such as concrete or asphalt.

GIS Sources: City of Alexandria

## Plate 22. Ground Disturbing Activities





*Fort Ward Park and Museum  
Area Management Plan*

*City of Alexandria, Virginia*

**Leaf Litter Disposal  
Management Areas**

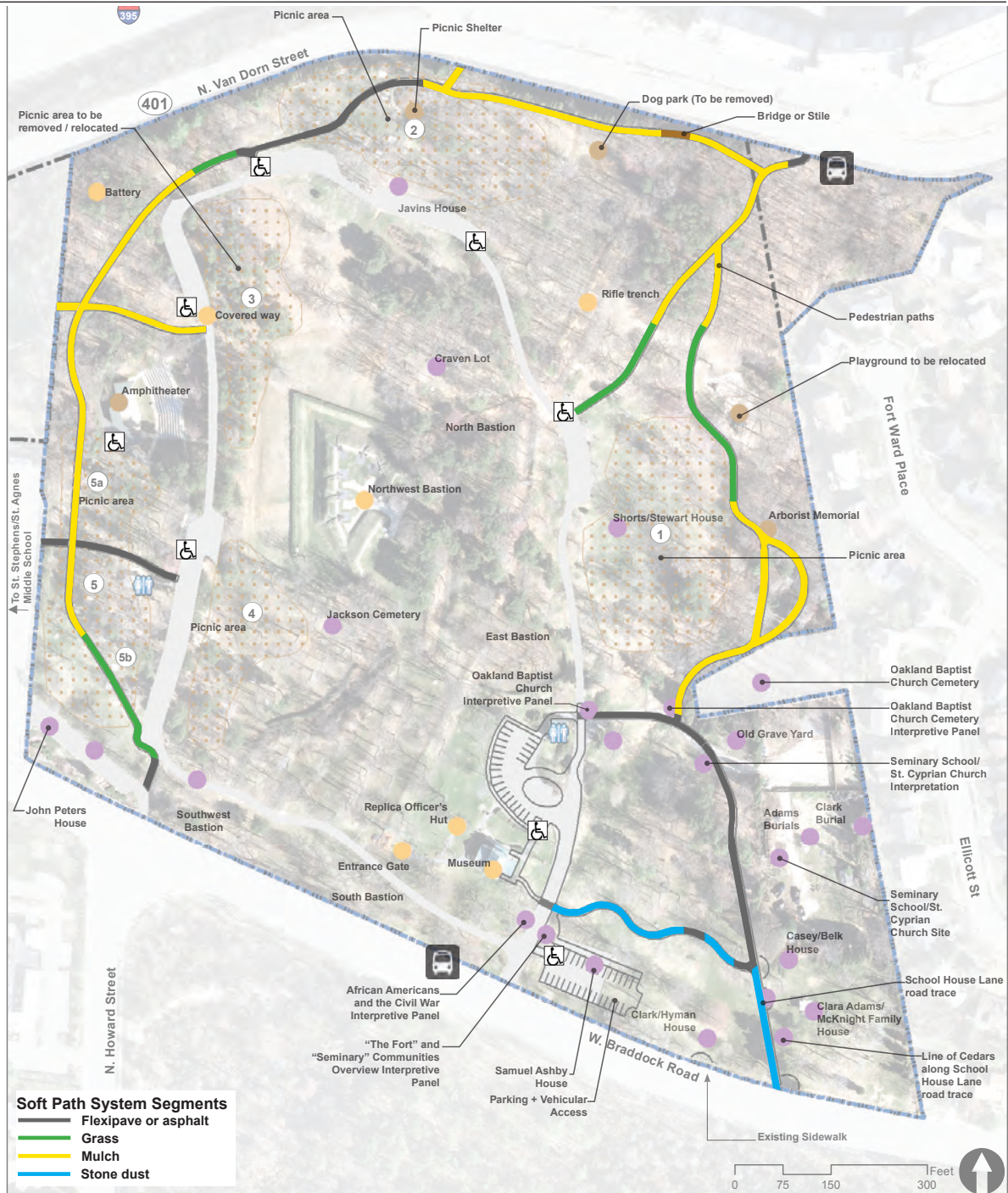
- |                          |  |
|--------------------------|--|
| Management Plan Boundary | Area 1 - Leaf litter to remain in place  |
| Park Parcel              | Area 2 - Leaf litter to be vacuumed except for final fall and then mulch mowed |
| Contour 2'               | Area 3 - Leaf litter to be mowed, mulched and left in place                    |
| Potential Soft Path      |  |

**L/KLA** Lardner/Klein Landscape Architects, PC  
in association with  
Heritage Strategies, Inc., John Milner Associates, Inc. and Barbara Franco

GIS Sources: City of Alexandria

**Plate 23. Leaf Litter Disposal Management Areas**





Soft Path System



## Fort Ward Park and Museum Area Management Plan

City of Alexandria, Virginia

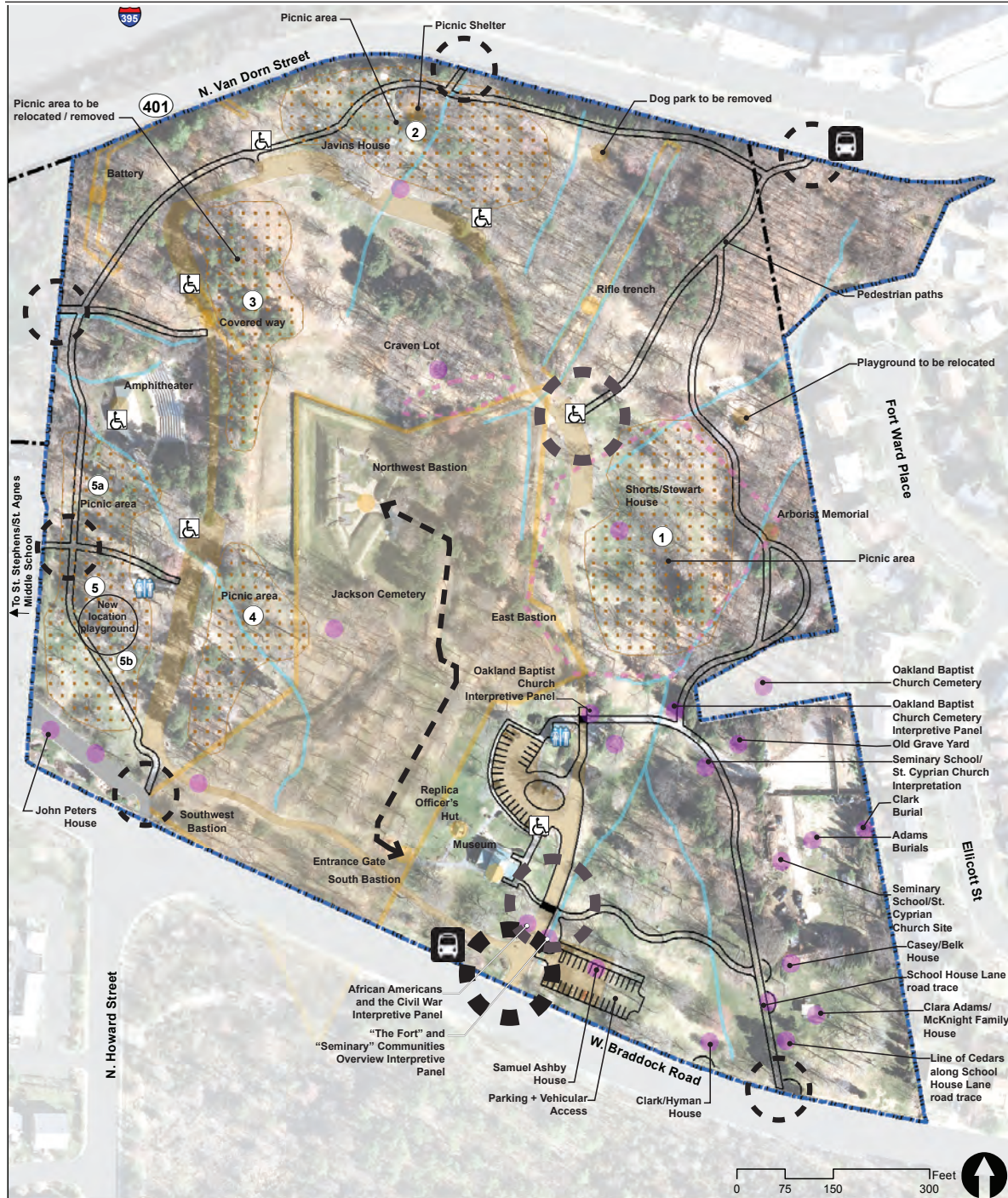
- Management Plan Boundary
- Park Parcel
- Park Road or Parking
- The Fort Community Features
- Civil War Features
- Recreational Feature
- Picnic Area
- Restroom



Lardner/Klein Landscape Architects, PC  
in association with  
Heritage Strategies, Inc., John Milner Associates, Inc. and Barbara Franco

GIS Sources: City of Alexandria





## Fort Ward Park and Museum Area Management Plan

City of Alexandria, Virginia

- |                          |                                       |                      |
|--------------------------|---------------------------------------|----------------------|
| Management Plan Boundary | Native American Resource              | Recreational Feature |
| Park Parcel              | The Fort Community Features           | Picnic Area          |
| Park Road or Parking     | Civil War Features                    | Restroom             |
| Drainage flowlines       | Fort earthworks and interior features |                      |
|                          | Exterior Fort earthworks              |                      |

## Potential Soft Path System and Enhancement Opportunities

- |  |                             |
|--|-----------------------------|
|  | Potential Soft Path System  |
|  | Potential park access point |
|  | Entrance / orientation      |
|  | Planned ADA path            |
|  | Potential ADA parking       |



Lardner/Klein Landscape Architects, PC  
in association with  
Heritage Strategies, Inc., John Milner Associates, Inc. and Barbara Franco

GIS Sources: City of Alexandria

## Plate 25. Potential Soft Path System and Enhancement Opportunities

October 2014

FINAL DRAFT

II-8.25

This page intentionally left blank.