



City of Alexandria  
Department of Recreation,  
Park & Cultural Activities

Park Plan Amendment

*Park & Recreation Commission Date:*

- September 20, 2018

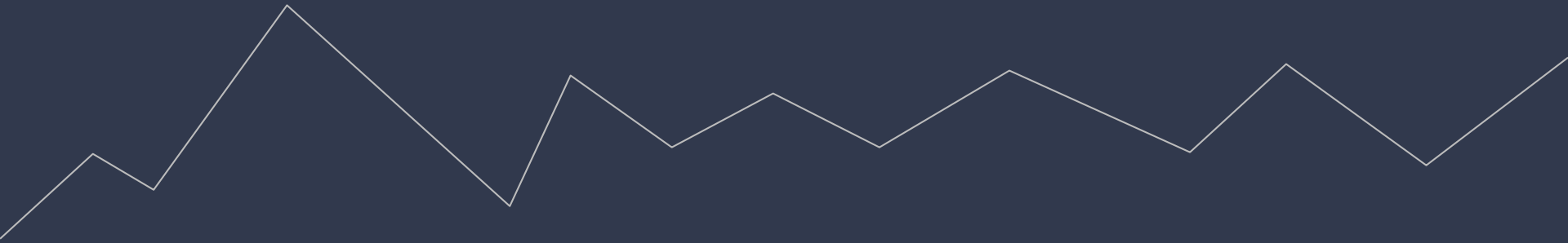
*Park Plan under Consideration:*

- Neighborhood Park Improvement Plan – Ewald Park



# Parkour Park Ewald

Parks and Recreation Committee Presentation



# Overview: Parkour

Physical Discipline

Adapting and  
overcoming obstacles  
in one's path

Jumping, climbing,  
swinging, landing,  
vaulting, balancing,  
flipping

Mastering the mind and  
body and using both to  
move creatively,  
efficiently, and safely



# Benefits of Park and Parkour

Multigenerational playspace

Promotes general fitness in an exciting and unique way

Catalyst for further renovation of Ewald Park

Activates space that has been unused for around 20 years

Opens up new opportunities for the community



## Ewald Park - Proposed Site Improvements

# Location and Layout



\*Parkour is only proposed change from 2016 Neighborhood Parks Improvement Plan

# Park Design (Main)

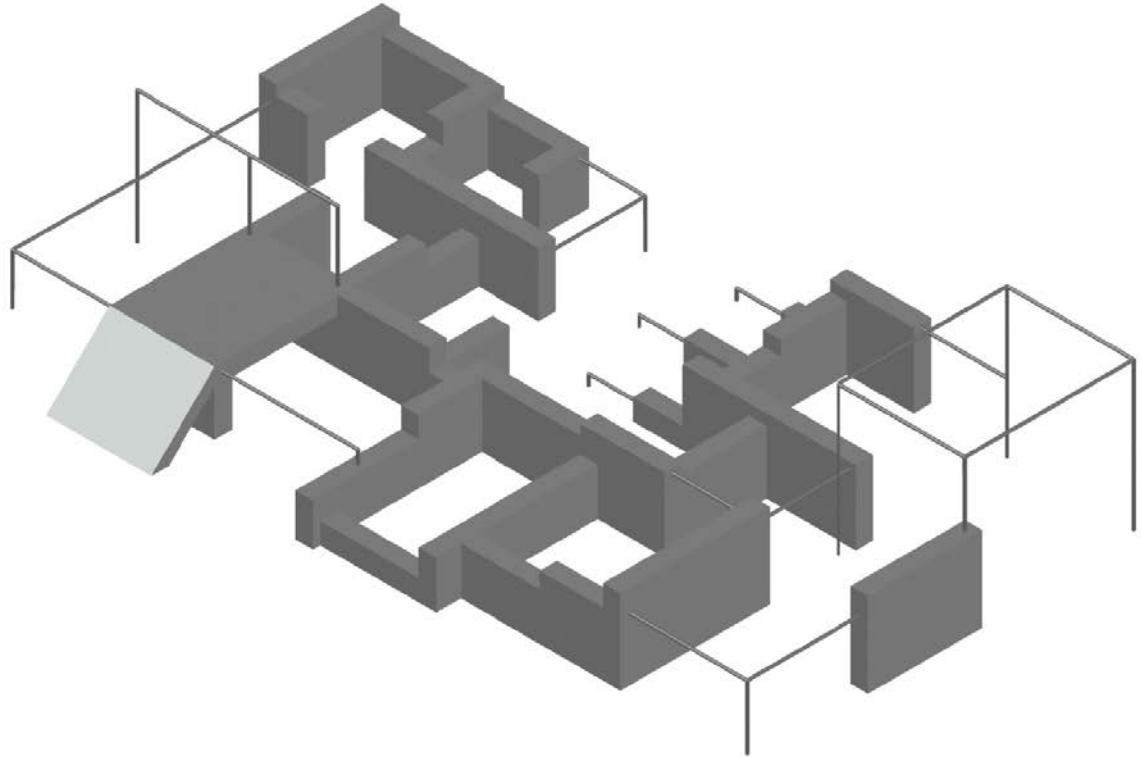
All walls 4 ft and  
below

No completely  
enclosed areas

Tallest point (rail):  
7.5 ft

38' x 23' - 3"

874 sq. ft



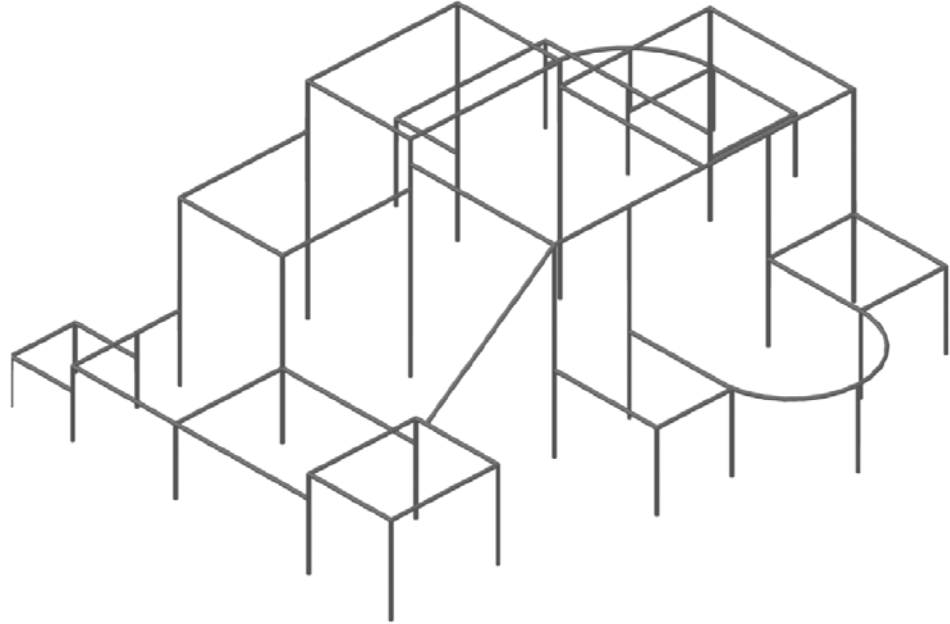
# Park Design (Alternative)

Tallest point: 9'6"

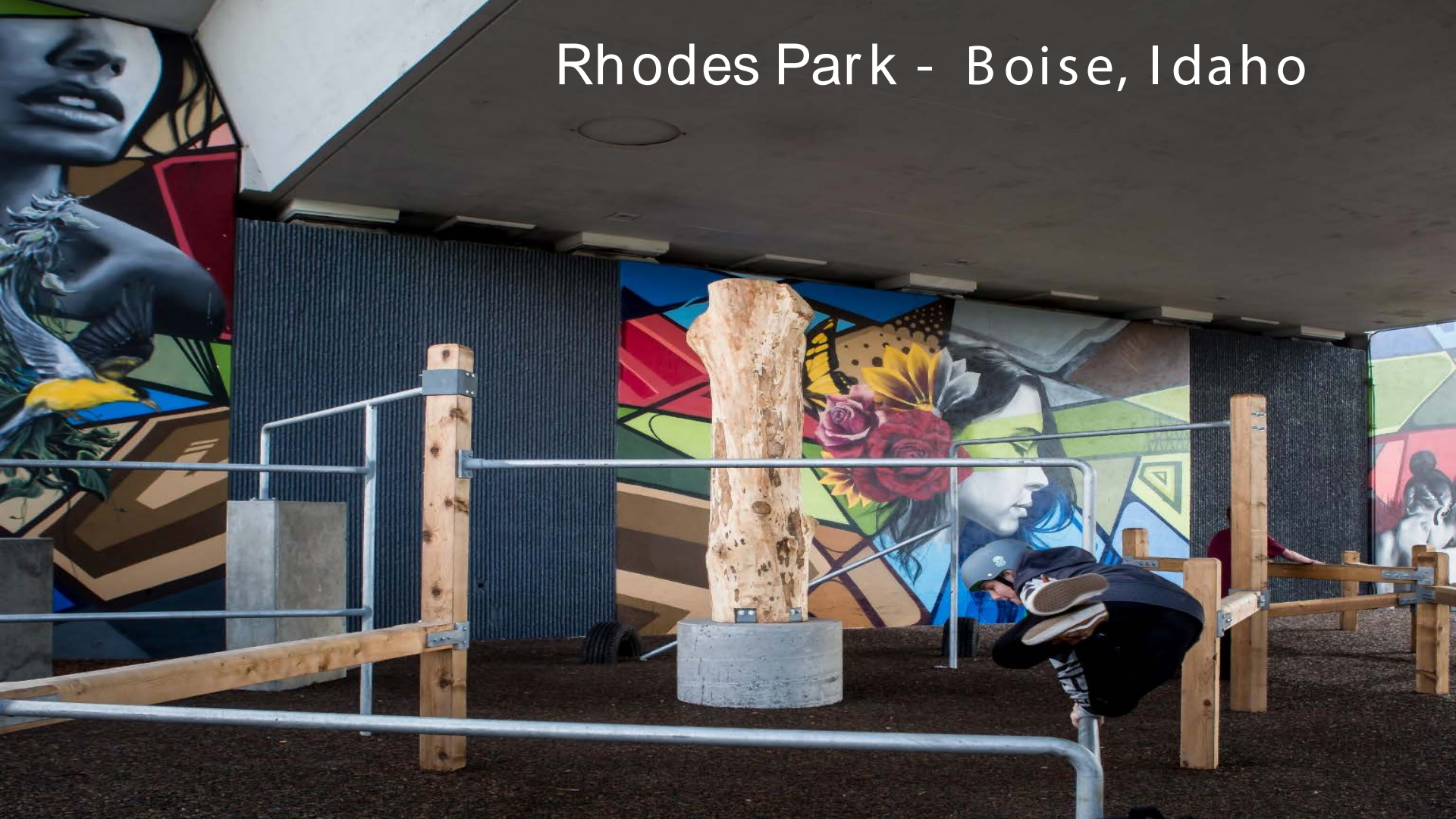
No concrete  
platforms or walls

26' - 9' x 33'

882.75 sq. ft



# Rhodes Park - Boise, Idaho







Langley Action Park - B.C., Canada



TraceSpace™

Trace Space - Berlin, Germany



Slough Parkour Park - Slough,  
Berkshire UK

# Cost Estimate Breakdown

1. Materials
2. Installation
3. Site Preparation



~ \$25,000

Material Cost for Large  
Design



~ \$35,000

Cost of Installation



~ \$1,500

~ \$8,000

Cost of Site Preparation



~ \$61,500

~ \$68,000

Total Cost of Project





# Fundraising Opportunities

RunningBrooke

West End Business Association

Corporate Entities (Geico, Red Bull)

Local Alexandria Businesses

(Lorraine Aprile Salon)





**City of Alexandria**  
**Department of Recreation, Park &**  
**Cultural Activities**

**Park Plan Amendment**

*Does this Amendment interfere with implementation of outstanding plan elements:*

- While the proposed amendment may reduce the size of the playground shown in the park plan, the proposed use compliments the playground and provides an activity to diversify ages and activate the park.

*Does this Amendment add additional maintenance costs from original endorsed plan?*

- No – maintenance costs would be the same as play features.

**Staff Recommendation: Approval**

