



Preliminary Enrollment Information- October 2014

The preliminary school year 2014-2015 enrollment numbers indicate that the total ACPS student enrollment has increased 4.4% compared to school year 2013-2014. The total average annual growth between September 2006 (FY 2007) and September 2014 (FY 2015) for the division is 4.13%. The highest percentage increase is seen in middle school at 6.0% followed by high school at 5.8% and elementary school at 3.2%.

Actuals vs. Projected

The two charts below show actual enrollment compared to the projected enrollment for that fiscal year.

Actual vs. Projected By Grade (FY 2012-2015)

For the current school year (FY 2015), elementary projections were lower than fall enrollment in 2nd and 5th grades. Elementary projections were higher than fall enrollment in kindergarten, 1st, 3rd and 4th grades.

Secondary projections were lower than fall enrollment 6th, 7th, 8th and 9th grades. Secondary projections were higher than fall enrollment in 10th, 11th, and 12th grades.

The biggest differences were in the over-projection at kindergarten and the under-projection at 9th grade.

Grade	FY2012 Final Projected	FY2012 10/1/2011	Projection Error	FY2013 Final Projected	FY2013 10/1/2012	Projection Error	FY2014 Final Projected	FY2014 10/1/2013	Projection Error	FY2015 Final Projected	FY2015 10/1/2014	Projection Error
PK	236	283	+19.9%	295	276	-6.4%	295	285	-3.4%	287	310	+8.8%
K	1,294	1,361	+5.2%	1,407	1,490	+5.9%	1,578	1,418	-10.1%	1,551	1,423	-8.3%
1	1,275	1,285	+8%	1,362	1,354	-6%	1,484	1,462	-1.5%	1,404	1,390	-1%
2	1,135	1,107	-2.5%	1,238	1,237	-1%	1,270	1,255	-1.2%	1,391	1,412	+1.5%
3	1,077	1,066	-1%	1,073	1,096	+2.1%	1,212	1,181	-2.6%	1,229	1,207	-1.8%
4	1,037	1,030	-.7%	1,043	1,052	+9%	1,085	1,063	-2%	1,162	1,143	-1.6%
5	945	954	+1%	999	999	+	1,013	1,013	+	1,030	1,041	+1.1%
6	785	804	+2.4%	870	871	+1%	897	946	+5.5%	923	947	+2.6%
7	761	753	-1.1%	750	775	+3.3%	828	872	+5.3%	908	941	+3.6%
8	736	739	+4%	713	765	+7.3%	758	784	+3.4%	861	870	+1%
9	747	785	+5.1%	760	813	+7%	807	892	+10.5%	872	1,028	+17.9%
10	794	803	+1.1%	814	847	+4.1%	861	846	-1.7%	945	916	-3.1%
11	770	714	-7.3%	788	789	+1%	809	832	+2.8%	804	795	-1.1%
12	721	655	-9.2%	617	683	+10.7%	716	714	-.3%	744	734	-1.3%
Grand Total	12,313	12,339	+2.1%	12,729	13,047	+2.5%	13,613	13,563	-.37%	14,111	14,157	+3.3%

Actual vs. Projected By Grade (FY 2012-2015)

For the current school year (FY 2015), the biggest differences in actual enrollment versus projected enrollment were all at elementary schools on the east side: Jefferson-Houston (+15%), Cora Kelly (-12.1%) and Lyles-Crouch (-10.2%). Actual enrollment at Francis C. Hammond MS was over projection while actual enrollment at George Washington MS was under projected. Combined middle school grades (6th, 7th, and 8th) were under projected by 7.3%. T.C. Williams Main Campus was under projected by almost 100 students (+4.1%).

The 9th grade class is divided between T.C. Williams Minnie Howard Campus and the King Street Campus. Those that attend the King Street Campus are enrolled in the International Academy which serves students who entered the country less than three years ago and whose English language skills are below grade 3 level.

School Name	FY2012 Final Projected	FY2012 10/1/2011	Projection Error	FY2013 Final Projected	FY2013 10/1/2012	Projection Error	FY2014 Final Projected	FY2014 10/1/2013	Projection Error	FY2015 Final Projected	FY2015 10/1/2014	Projection Error
Charles Barrett	360	389	+8.1%	416	402	-3.4%	442	446	+9%	482	458	-5%
Cora Kelly	375	353	-5.9%	404	365	-9.7%	367	373	+1.6%	388	341	-12.1%
Douglas MacArthur	644	643	-.2%	646	693	+7.3%	715	704	-1.5%	727	708	-2.6%
George Mason	457	472	+3.3%	466	495	+6.2%	525	512	-2.5%	533	541	+1.5%
James K. Polk	620	628	+1.3%	675	656	-2.8%	708	690	-2.5%	713	704	-1.3%
Jefferson Houston	362	364	+6%	389	372	-4.4%	385	356	-7.5%	386	444	+15%
John Adams	862	818	-5.1%	871	820	-5.9%	883	874	-1%	895	944	+5.5%
Lyles-Crouch	369	415	+12.5%	422	427	+1.2%	457	437	-4.4%	441	396	-10.2%
Matthew Maury	374	396	+5.9%	404	422	+4.5%	461	418	-9.3%	448	441	-1.6%
Mount Vernon	736	713	-3.1%	763	774	+1.4%	836	768	-8.1%	820	817	-.4%
Patrick Henry	491	531	+8.1%	601	586	-2.5%	621	586	-5.6%	651	596	-8.4%
Samuel Tucker	676	692	+2.4%	674	722	+7.1%	729	740	+1.5%	751	750	-.1%
William Ramsay	758	741	-2.2%	778	831	+6.8%	870	831	-4.5%	876	885	+1%
ES Total	7,084	7,155	+1%	7,509	7,565	+7%	7,999	7,735	-3.3%	8,111	8,025	-1.1%
Francis Hammond MS	1,263	1,274		1,340	1,303		1,341	1,386		1,179	1,436	21.8%
George Washington MS	934	968		901	1,047		1,080	1,158		1,456	1,223	-16.0%
MS Total	2,197	2,242	+2%	2,241	2,350	+4.9%	2,421	2,544	+5.1%	2,635	2,659	+9%
Minnie Howard Center	689	701	+1.7%	680	700	+2.9%	695	714	+2.7%	751	751	+%
TC Williams HS	2,343	2,254	-3.8%	2,299	2,422	+5.4%	2,498	2,570	+2.9%	2,614	2,722	+4.1%
HS Total	3,032	2,955	-2.5%	2,979	3,122	+4.8%	3,193	3,284	+2.8%	3,365	3,473	+3.2%
Grand Total	12,313	12,352	+3.2%	12,729	13,037	+2.42%	13,613	13,563	-.37%	14,111	14,157	+3.3%

Births and Kindergarten Capture

Of the live births to Alexandria residents in 2009 reported by the Virginia Department of Vital Statistics, 56% enrolled in ACPS in 2014. This continues the decline in kindergarten capture and represents a departure from the upward trend we had experienced 2005-2013.

FY	Total Births 5 Yrs Before	Kindergarten Enrollment	K Capture
2009	2,126	1,179	55.5%
2010	2,277	1,236	54.3%
2011	2,133	1,313	61.6%
2012	2,129	1,364	64.1%
2013	2,289	1,516	66.2%
2014	2,442	1,418	58.1%
2015	2,546	1,425	56.0%

Actual Enrollment Comparison

Growth was seen at every grade level between FY 2014 and FY 2015 except two grades- 1st grade declined by 70 students (-4.8%) and 11th grade declined by 40 students (-4.8%). Growth over ten percent was seen at three grade levels- 2nd grade increased by 158 students (12.6%), 8th grade increased by 86 students (11.0%) and 9th grade increased by 132 students (14.8%).

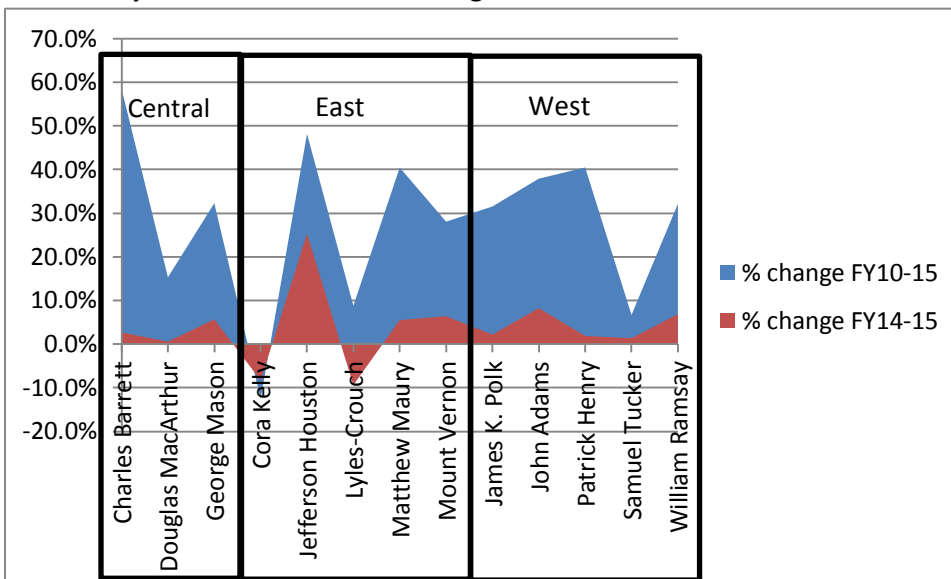
School Level	Grade	FY2010	FY2011	FY2012	FY2013	FY2014	FY 2015 10/1/2014	Change # of Students (15-14)	% Change (15-14)	% Change (10-15)
ES	PK	116	183	283	276	285	310	25	8.8%	167.2%
	K	1,236	1,301	1,361	1,490	1,418	1,423	5	0.4%	15.1%
	1	1,184	1,175	1,285	1,354	1,462	1,390	(72)	-4.9%	17.4%
	2	1,093	1,120	1,107	1,237	1,255	1,412	157	12.5%	29.2%
	3	999	1,047	1,066	1,096	1,181	1,207	26	2.2%	20.8%
	4	879	983	1,030	1,052	1,063	1,143	80	7.5%	30.0%
	5	810	842	954	999	1,013	1,041	28	2.8%	28.5%
ES Total		6,317	6,651	7,086	7,504	7,677	7,926	249	3.2%	25.5%
MS	6	767	782	804	871	946	947	1	0.1%	23.5%
	7	753	756	753	775	872	941	69	7.9%	25.0%
	8	725	738	739	765	784	870	86	11.0%	20.0%
MS Total		2,245	2,276	2,296	2,411	2,602	2,758	156	6.0%	22.9%
HS	9	741	758	785	813	892	1,028	136	15.2%	38.7%
	10	813	782	803	847	846	916	70	8.3%	12.7%
	11	766	786	714	789	832	795	(37)	-4.4%	3.8%
	12	616	726	655	683	714	734	20	2.8%	19.2%
HS Total		2,936	3,052	2,957	3,132	3,284	3,473	189	5.8%	18.3%
Grand Total		11,498	11,979	12,339	13,047	13,563	14,157	594	4.4%	-95.8%

ACPS Elementary Schools % Change in Enrollment

- Central Region (CB, DM, GM) overall 2.7% growth with highest at George Mason (5.7%).
- East Region (CK, JH, LC, MM, MV) overall 3.7% growth with highest at Jefferson-Houston with 24.7% growth (grades PK-8th) and declines in enrollment at Cora Kelly (-8.6%) and Lyles-Crouch (-9.4%).
- West Region (JKP, JA, PH, ST, WR) saw the highest overall growth (4.2%) of the three regions. The highest growth of the west region was John Adams (8.0%) and William Ramsay (6.5%).

Region	School	FY2010	FY2011	FY2012	FY2013	FY2014	FY 2015 10/1/2014	% change FY10-15	% change FY14-15	# of students change FY14-15
Central	Charles Barrett	289	319	389	402	446	458	58.5%	2.7%	12
	Douglas MacArthur	614	625	643	693	704	708	15.3%	0.6%	4
	George Mason	409	439	472	495	512	541	32.3%	5.7%	29
	Central Total	1,312	1,383	1,504	1,590	1,662	1,707	30.1%	2.7%	45
East	Cora Kelly	391	367	353	365	373	341	-12.8%	-8.6%	(32)
	Jefferson Houston	301	334	364	372	356	444	47.5%	24.7%	88
	Lyles-Crouch	364	356	415	427	437	396	8.8%	-9.4%	(41)
	Matthew Maury	314	348	396	422	418	441	40.4%	5.5%	23
	Mount Vernon	638	701	713	774	768	817	28.1%	6.4%	49
East Total	2,008	2,106	2,241	2,360	2,352	2,439	21.5%	3.7%	87	
West	James K. Polk	536	583	628	656	690	704	31.3%	2.0%	14
	John Adams	686	811	818	820	874	944	37.6%	8.0%	70
	Patrick Henry	425	437	531	586	586	596	40.2%	1.7%	10
	Samuel Tucker	703	683	692	722	740	750	6.7%	1.4%	10
	William Ramsay	672	702	741	831	831	885	31.7%	6.5%	54
West Total	3,022	3,216	3,410	3,615	3,721	3,879	28.4%	4.2%	158	
ES Total		6,342	6,705	7,155	7,565	7,735	8,025	26.5%	3.7%	290

Elementary School Enrollment % Change



ACPS Secondary Schools % Change in Enrollment

- All secondary schools grew more than 3.5% between school year 13-14 and 14-15. The smallest growth was at Francis C. Hammond MS (3.6%) and the highest at T.C. Williams King Street Campus (5.9%).

	FY2010	FY2011	FY2012	FY2013	FY2014	FY 2015 10/1/2014	% change FY10-15	% change FY14-15	# of students change FY14-15
Francis Hammond MS	1,255	1,263	1,271	1,303	1,386	1,436	14.4%	3.6%	50
George Washington	965	959	956	1,047	1,158	1,223	26.7%	5.6%	65
Minnie Howard Center	685	699	701	700	714	751	9.6%	5.2%	37
TC Williams HS	2,251	2,353	2,256	2,432	2,570	2,722	20.9%	5.9%	152
Total	5,156	5,274	5,184	5,482	5,828	6,132	18.9%	5.2%	304

