

Educational Specifications Community Meeting #2 March 18, 2014

ACPS & City of Alexandria

Agenda

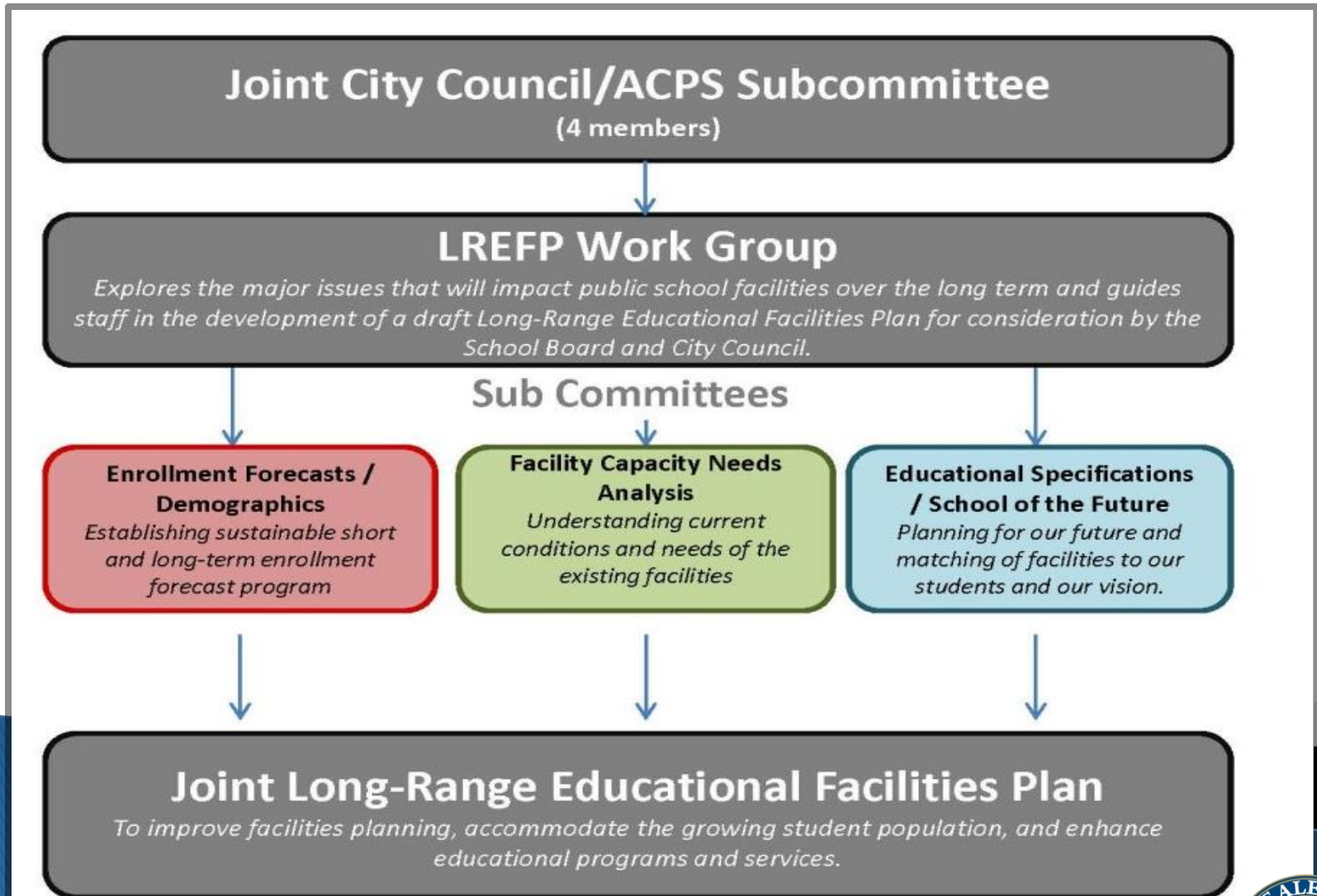
- ▶ Welcome and Introductions
- ▶ Project Overview
- ▶ Progress Update
 - Schedule Review
 - Review of first meeting – results of visioning sessions
 - Summary of Stakeholder Feedback
- ▶ Visualizing a 21st Century School
 - Classrooms
 - Corridors & Public Spaces
 - Shared Spaces
 - Outdoor Spaces & Site Considerations
- ▶ Next Steps
- ▶ Question & Answer Session

Long Range Educational Facilities Plan

- ▶ 19-member Work Group jointly created by ACPS and City Leadership
- ▶ 15-18 months timeline



Long Range Educational Facilities Plan



Overview of Educational Specifications

- ▶ Educational Specification Document
 - Summary of Planning Concepts
 - Facility Space Requirements
 - Program Area Detail
- ▶ Development Process
 - Technical expertise input
 - Community and stakeholder input
- ▶ Project Schedule

Schedule

- 1/16: Project Initiation
- 2/3: Community Meeting 1
- 2/3 – 3/10: Technical Interviews
- 3/18: Community Meeting 2
- 3/11 – 4/2: Document Drafting
- Mid April: Public Posting of Draft
- 4/24: Community Meeting 3
- Late May: Issue Final Document

Words & Phrases

What a School Facility Should Be

Words & Phrases



Visioning Results

- ▶ Schools should be designed to facilitate learning wherever and whenever
- ▶ ACPS should continue to strive to better integrate the use of technology
- ▶ Interior and exterior architectural quality is important to student achievement
- ▶ Facilities should encourage spontaneous interactions between teachers and students
- ▶ Community use of school buildings is a high priority
- ▶ Going above and beyond baseline environmental guidelines is an expectation

Technical Interviews

- ▶ Administration – Meeting Pending
- ▶ CTE
- ▶ Early Childhood
- ▶ Food Services
- ▶ General Academic
- ▶ Head Start/Campagna
- ▶ Health Services
- ▶ IT/AV
- ▶ Facilities Department
 - Operations
 - Security
- ▶ Media Center – Meeting Pending
- ▶ Partnerships
- ▶ Performing Arts
- ▶ Physical Education
- ▶ PTA's
- ▶ RPCA
- ▶ Science – Meeting Pending
- ▶ Special Education
- ▶ Student Services – Meeting Pending
- ▶ Transportation
- ▶ Visual Arts

Summary of Feedback

▶ General Academic

- Natural light with bright and welcoming colors with flexible furniture conducive to small group work
- Provide display and teaching areas on multiple walls
- Provide science lab functionality at the elementary level
- Provide shared areas for teachers and classes to collaborate with age appropriate furniture
- Provide adequate space in classrooms for teachers and students to move around comfortably and to accommodate needs of special education students.

Summary of Feedback

▶ CTE

- Provide flexible spaces to accommodate learning for business, FACS, and Technology
- FACS seeks kitchen studios in all middle schools with an adjacent herb garden
- CTE utilizes advanced computer workstations to support CAD drawing software
- CTE plans to utilize unique equipment including a laser engraver and a dynamic flexible workbench

Summary of Feedback

▶ IT/AV

- Provide maximum flexibility and functionality for students and teachers via a robust wireless network.
- Expand infrastructure to support a one to one device ratio at all levels.
- Provide adequate power in multiple locations to support charging and flexible room arrangements

Summary of Feedback

▶ Security

- Access to schools during school hours should be controlled via a single point that utilizes a double perimeter arrangement routing all guests through the main office.
- Shared use spaces operated by non ACPS programs should be co-located to maximize access control.
- All-digital, HD, security cameras and supporting infrastructure.

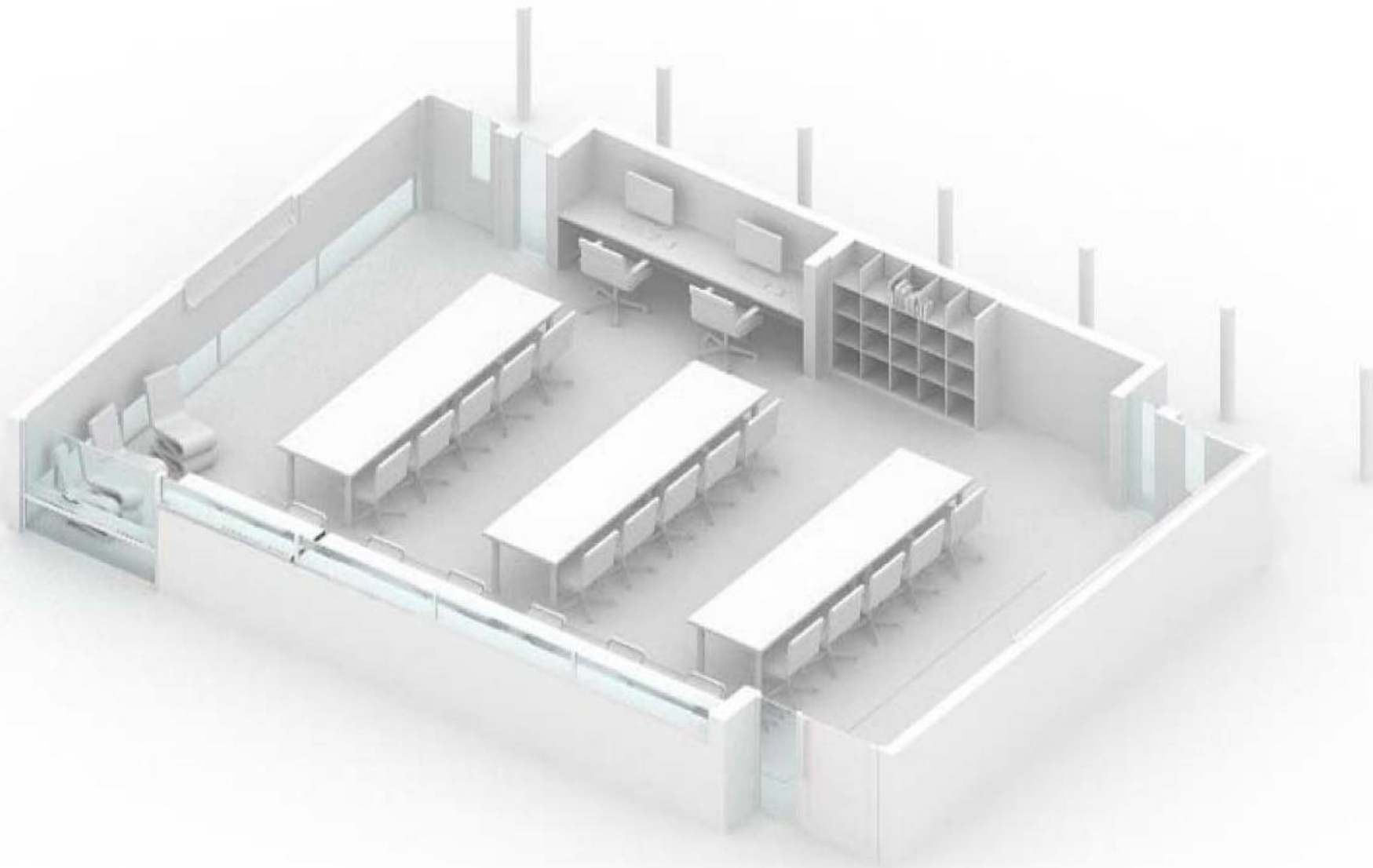
Visualizing a 21st Century School

Visualizing a 21st Century School

- ▶ What should a 21st Century School look like?
- ▶ What kind of environment to parents and the community in general expect?
- ▶ How should students, parents, and community members interact with the facility?

Visualizing a 21st Century School

Classrooms







new furnishings
and casework

suspended act
ceiling to conceal
new and old
wiring

new windows,
white aluminum
with existing trim
painted out white,
with shades

typical classroom view
1908 building
west view 3rd grade



new upright
pendant fixtures

new prometheum
board

new floor finish
with pattern that
unites entire
school

new plasma
TV

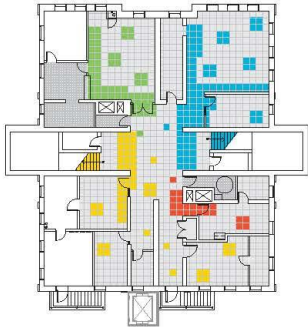
typical classroom view
1908 building
east view 3rd grade



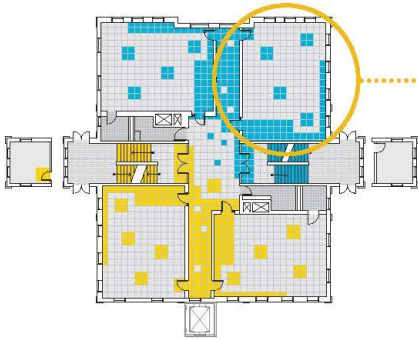
first floor corridor perspective



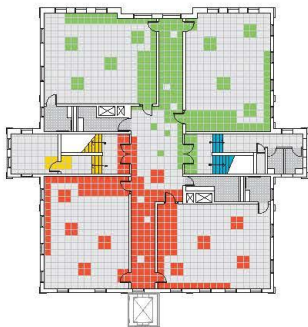
blue corridor classroom



basement floor finishes



first floor floor finishes



second floor floor finishes



blue corridor classroom

Visualizing a 21st Century School

Corridors & Public Spaces



directory

display, recessed into new drywall

suspended drywall ceiling

reception window, connecting to admin

mission statement



main entry view
1908 building

display, new casework

front desk, semi-recessed

suspended ac ceiling, new uplight pendant fixtures

new tack-boards



first floor corridor view
1908 building
west view toward gymnasium and main entry



Visualizing a 21st Century School

Shared Spaces







BRENT

elementary school library
capitol hill, washington, dc

Existing skylights in the Brent School Library were underutilized. In the renovated library the skylights are emphasized through the use of dynamically shaped and colored frames to become "light monitors" that reflect luminous colored light. The light from the skylights works to define space and celebrate the different areas of the library. The architects added new interior windows to visually connect the library to the rest of the school. A new computer work space for students was added to the plan.



before



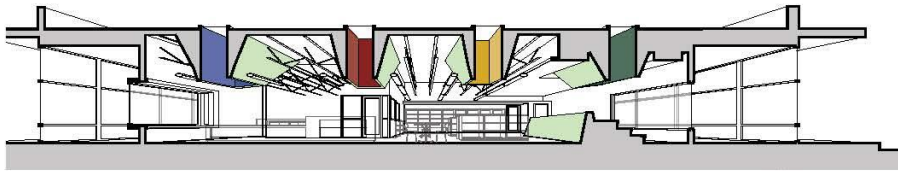
before



after



skylight detail



section



reading theater



PEABODY

early learning center **library**
capitol hill, washington, dc

The Peabody School Library occupied a large two-story space that was out of scale for the inhabitants of an elementary school library. The goal of the renovation was to modulate this large space to a more appropriate scale. Through the use of color and texture, floor, walls and timbered truss elements are delineated to articulate place. By placing light fixtures seven to eight feet off the floor, the ceiling level is lowered from two stories to a height more comfortable for kindergarten students. To divide the large floor plate into three teaching areas, large canvases are mounted on the existing heavy timbered wood trusses. Each year, each class will paint a canvas as a gift to next year's students.



before



before



after

Visualizing a 21st Century School

Site and Outdoor Spaces



Bioretention Garden



Forest Court Installation



Forest Courtyard



Spring Planting

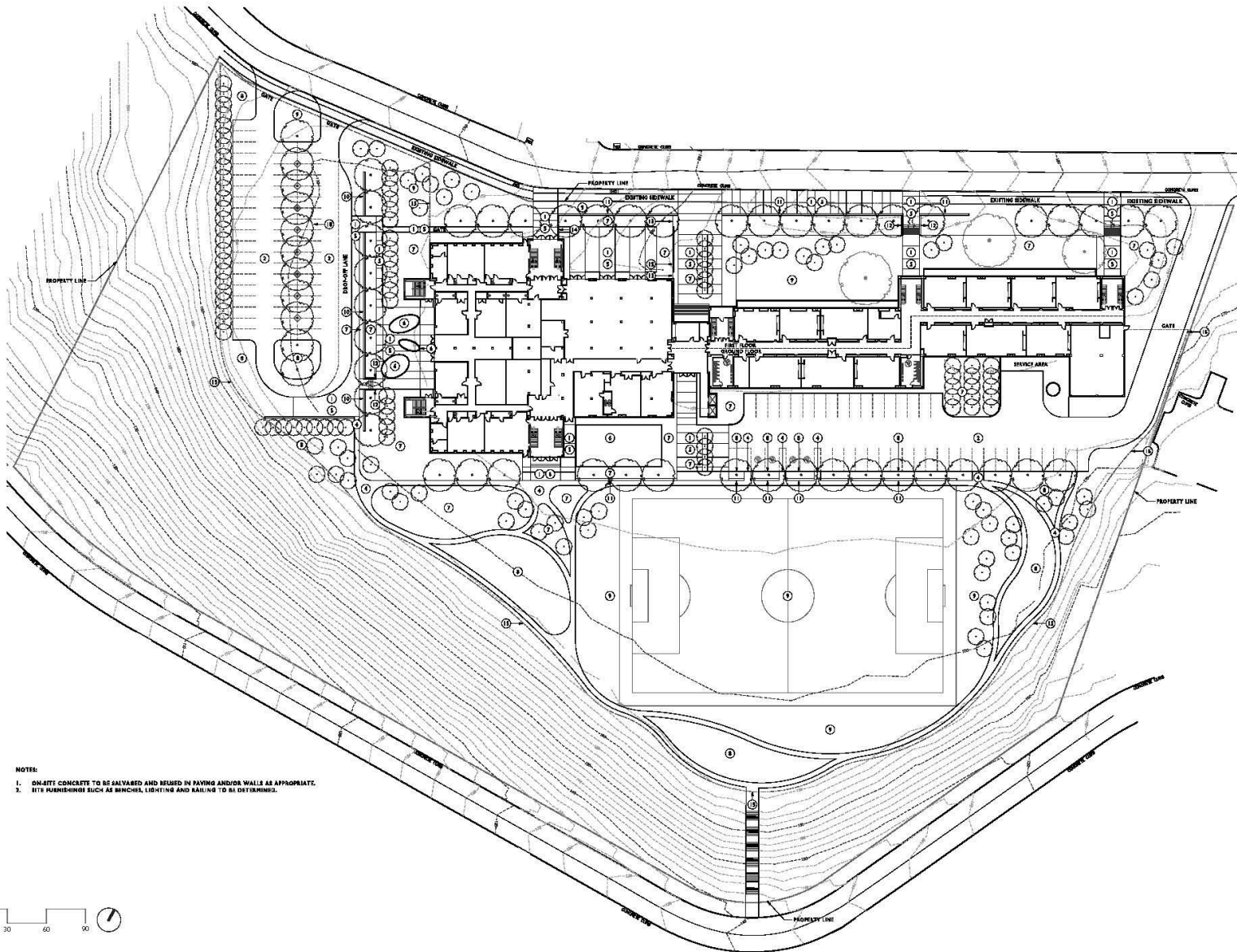


Bench Wall

Manassas Park Elementary School (MPES) and Kindergarten
Manassas Park, VA





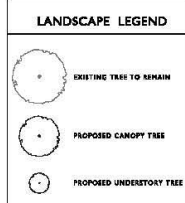
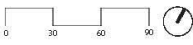


- ### KEYNOTES
- ① C/P CONCRETE WITH SAWCUT JOINTS AND FINISH FINISHES
 - ② ASPHALT PARKING LOT
 - ③ STONE DIRT
 - ④ STABILIZED STONE DIRT OR C/P CONCRETE
 - ⑤ SALVAGED INVADED CONCRETE PAVING TO BE USED AS ACTIVITY PAVING
 - ⑥ PAVED IN PLACE INSET PLAY SURFACE WITH C/P CONCRETE CURB
 - ⑦ SPECIAL PLANTING AREA
 - ⑧ BIORETENTION AREA
 - ⑨ TWP
 - ⑩ TREE IN STRUCTURAL SOIL IN PARKING AREA
 - ⑪ SAWCUT SALVAGED CONCRETE WALL (SP)
 - ⑫ C/P CONCRETE RETAINING WALL
 - ⑬ C/P CONCRETE RETAINING WALL WITH SOFTSCALE
 - ⑭ GATE
 - ⑮ FENCE

ZONING SUMMARY

squares:	5872
lot:	0660
zone:	P-S-X
year built:	1920
land area:	386,597 sf
building gross floor area:	13,7015 sf
lot occupancy:	60%
allowable:	231,255 sf
current:	49,800 sf (13%)
available:	182,055 sf
floor area ratio:	1.8 max
allowable:	694,075 sf
current:	13,7015 sf (1% 36)
available:	553,755 sf
building height:	
allowable:	30 feet
current:	50 feet
setbacks:	
front yard:	0 feet
side yard:	5 feet min
rear yard:	(or 7' per story building height) 0 feet
parking:	
elementary & junior high:	2 spaces for each 2 teacher/sten/teacher
high school & accessory uses:	2 spaces for each 2 teacher/sten/teacher + other 1 space for each 20 classroom seats + 1 space for each 10 seats in the largest auditorium/gymnasium/public assembly space
96 teachers:	65 spaces
300 seat auditorium:	30 spaces
open air:	95 spaces
total provided:	190 spaces
landings:	
1 loading berth @ 30 feet deep	
1 loading berth @ 100 sq ft	
1 service/vehicle loading space @ 20 ft deep	

- NOTE:
1. QUALITY CONCRETE TO BE SALVAGED AND REUSED IN PAVING AND/OR WALLS AS APPROPRIATE.
 2. FITS FURNISHINGS SUCH AS BENCHES, LIGHTING AND RAILING TO BE DETERMINED.



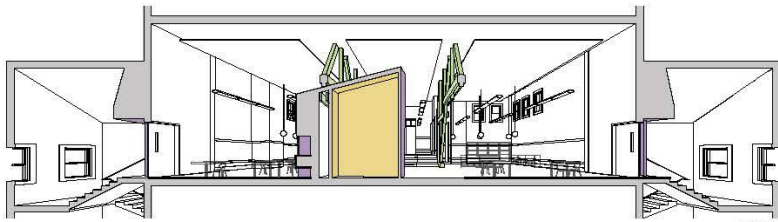
Douglass Junior High School
 2620 douglass rd se
 Site Plan

studio27architecture
 t:202.939.0027
 www.studio27arch.com





layering detail



section



library area



circulation desk



section



© Tony Greig



Next Steps

- ▶ 3rd Community Meeting
April 24, 2014
T.C. Williams High School Cafeteria
7:00–8:30pm

For more information and to stay in touch...

CITY OF Alexandria VIRGINIA
ALEXANDRIAVA.GOV

Home | Residents | Visitors | Business | City Departments ▾ | Contact Us | Search

▶ Home ▶ Planning & Zoning ▶ Long Range Educational Facilities Work Plan

Tuesday, January 15 • 42° Air Quality: Green

Planning & Zoning

Page updated Jan 14, 2013 9:31 AM

Share RSS Print

Long-Range Educational Facilities Plan

The City of Alexandria and the Alexandria City Public School System (ACPS) are jointly developing a work program for a Long Range Educational Facilities Plan to improve facilities planning, accommodate the growing student population, and enhance educational programs and services.

As part of the program, a 19 member work group was established and is comprised of members from the community, ACPS School Board, City Council, Campagna Center, and the PTA Council, supported by ACPS and City staff. The workgroup meets on a regular basis, generally quarterly, to explore the major issues that will impact public school facilities over the long term and to guide staff in the development of a draft Long Range Educational Facilities Plan for consideration by the School Board and City Council.

The public is invited to all meetings of the work group and is encouraged to stay informed about upcoming meetings through eNews.

- [Work Group Members](#)
- [Joint COA/ACPS Work Program](#)
- [LREFP Work Program Supplement](#)
- [LREFP](#)



www.alexandriava.gov/68540

For more information, contact the Long Range Educational Facilities Planner & GIS Specialist, ACPS, 703/461-4168 or Karl Moritz, Deputy Director, Planning and Zoning, City of Alexandria, 703/746-3804.

QUICK LINKS

- ▶ About Planning & Zoning
- ▶ Development
- ▶ GIS & Maps
- ▶ Historic Preservation
- ▶ Neighborhood Planning
- ▶ Planning Commission
- ▶ Plans, Projects & Initiatives
- ▶ Statistics & Demographics
- ▶ Zoning Services

RESOURCES

- ▶ Administrative Special Use Permits
- ▶ Alexandria Master Plan & Citywide Chapters
- ▶ Applications & Forms
- ▶ Design Guidelines
- ▶ Development Viewer
- ▶ Frequently Asked Questions
- ▶ P&Z Dockets & Webcasts
- ▶ SUP Viewer
- ▶ Zoning Ordinance

Obtain and review public documents and records?

Questions?