

Educational Specifications Community Meeting #3 June 24, 2014

Alexandria City Public Schools & City of Alexandria

Learning to Live • Loving to Learn



Agenda

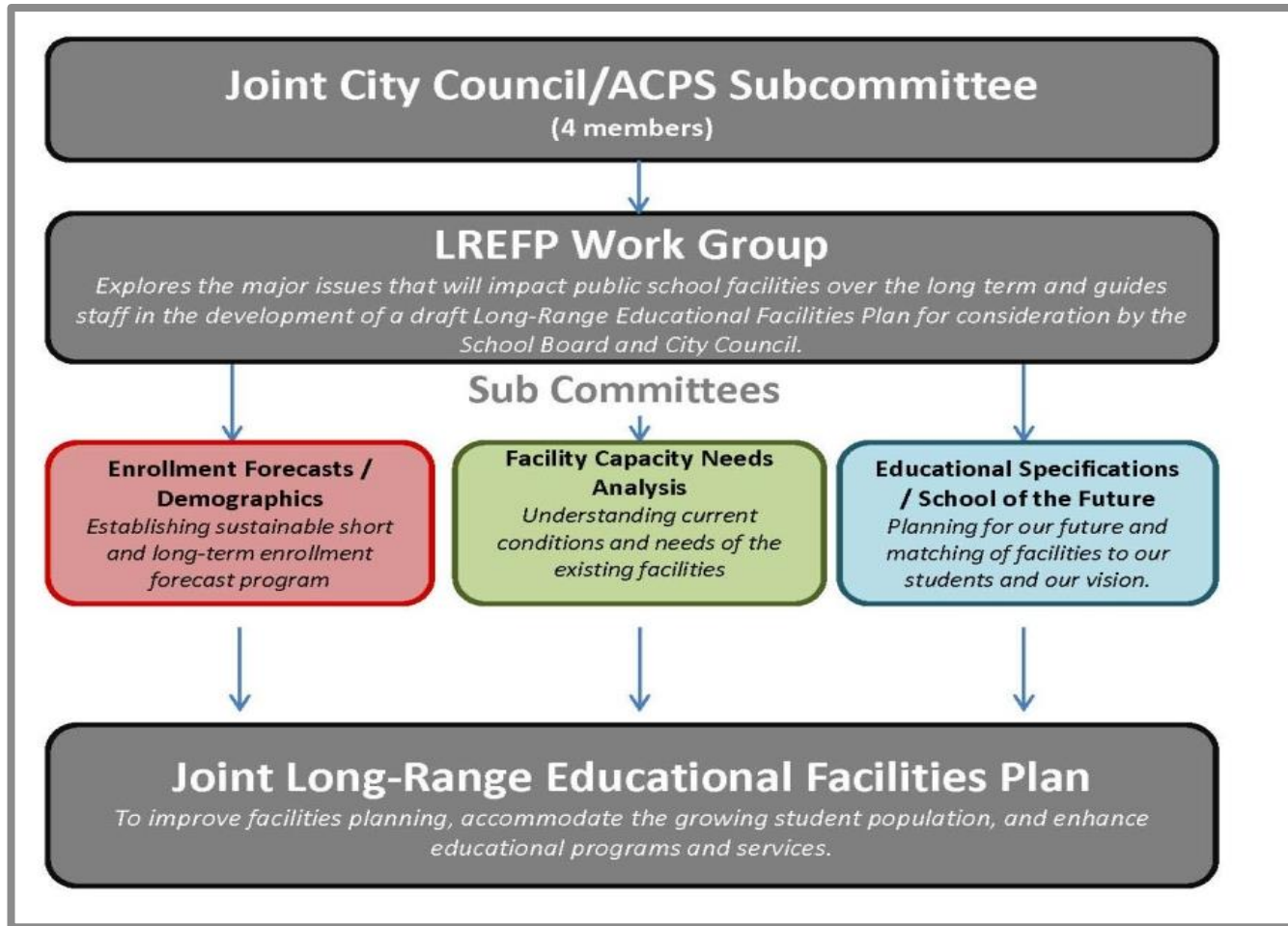
- ▶ Welcome and Introductions
- ▶ Project Overview
 - Schedule
 - Process
 - Vision
 - Student Feedback
 - Planning Concepts
- ▶ 21st Century ACPS Schools – Project Findings
 - Organizational Arrangements
 - Key Spaces
 - Spaces Unique to ACPS
 - Outdoor Spaces & Site Considerations
- ▶ Next Steps
- ▶ Question & Answer Session

Long Range Educational Facilities Plan

- ▶ 19 member Work Group jointly created by ACPS and City Leadership
- ▶ 15–18 months timeline



Long Range Educational Facilities Plan

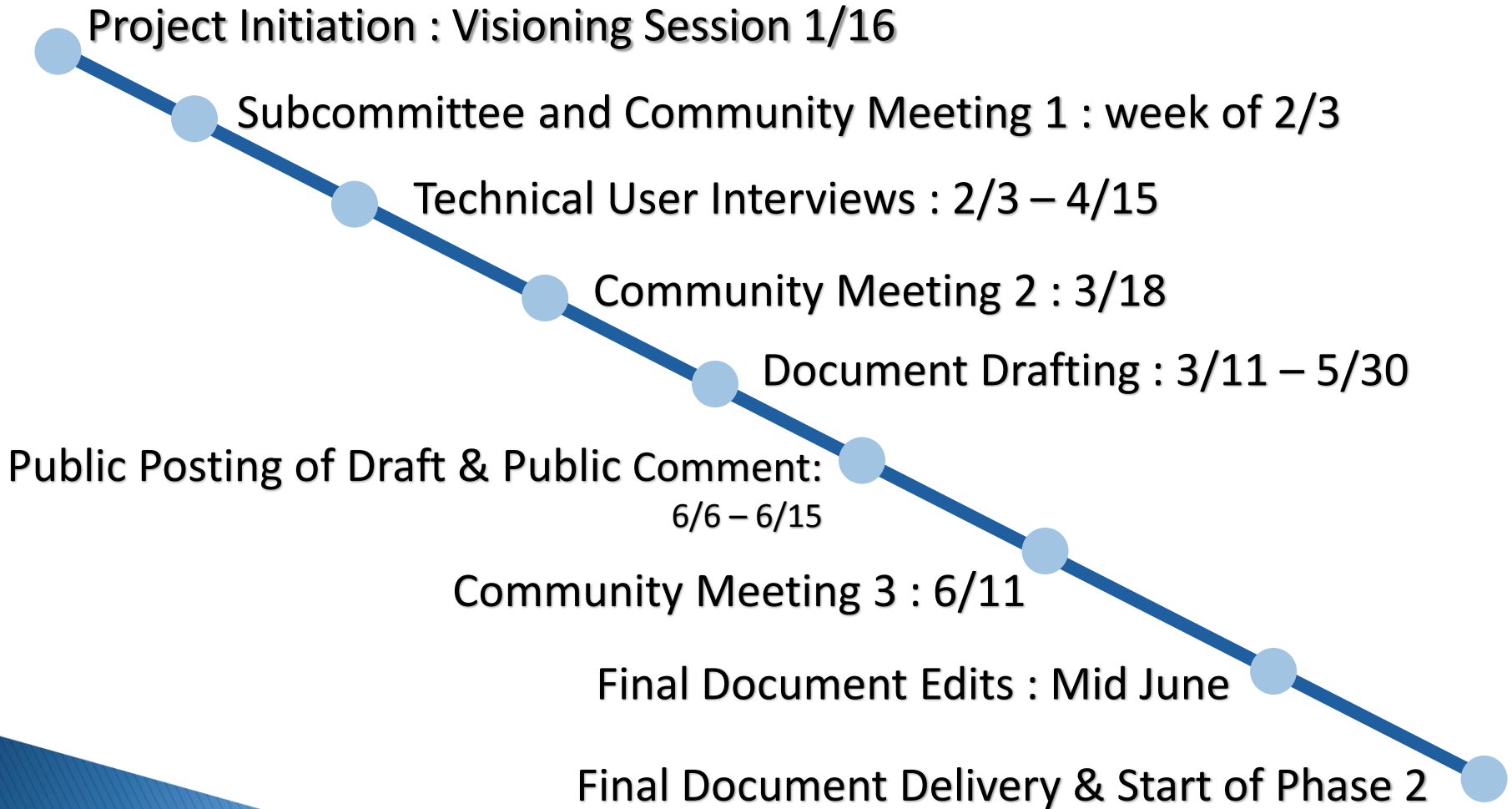


Overview of Educational Specifications

- ▶ What's included?
 - Summary of Planning Concepts
 - Facility Space Requirements
 - Program Area Detail

- ▶ How are they used?
 - A guideline for future construction
 - Capital Planning

Schedule



Visioning Results

- ▶ **Building Concepts**
 - Teach whenever and wherever
 - Collaborative and adaptable learning spaces
 - Seamless integration of technology

- ▶ **Community Context**
 - Student and Family focused
 - Schools are neighborhood assets
 - Provide space for after school programming

Visioning Results

- ▶ Organizational and Operational Paradigm
 - Small learning communities
 - Increase student collaboration
 - Learn with your peers – push-in approach
- ▶ Architectural and Construction Quality
 - Architectural Quality Prioritized
 - Emphasize impact on learning environment
 - Sustainable facilities
 - Respectful to the neighborhood context

Interview Groups

- ▶ **Administration/Front Office/Main Office**
 - Tammy Ignacio
- ▶ **Security**
 - Chris Flood/ACPS Facilities
- ▶ **Student Services**
 - Margaret Walsh
- ▶ **Transportation**
 - David Rose
- ▶ **Partnerships/Joint Use**
 - Shanna Sampson
- ▶ **Foodservices**
 - Beck Domokos-Bays
- ▶ **IT**
 - Elizabeth H/John Crites
- ▶ **RPCA**
 - Ron K/Dana W/David M
- ▶ **Head Start**
 - Tammy Mann
- ▶ **Early Childhood**
 - ▶ Stacey Joyner
- ▶ **Maintenance**
 - ▶ ACPS Facilities
- ▶ **Health Services**
 - ▶ Nancy Runton
- ▶ **Core Academics**
 - ▶ Vertical Alignment Team
- ▶ **Science**
 - ▶ Daniel A
- ▶ **Special & Alternative Ed**
 - ▶ Jane Quenneville
- ▶ **Visual Arts**
 - ▶ Luisa Tio
- ▶ **Performing Arts**
 - ▶ Anne Provencher
- ▶ **Phys. Ed.**
 - ▶ Kaitlin McMurdy
- ▶ **CTE**
 - ▶ Sherri Chapman
- ▶ **Family & Consumer Science**
 - ▶ Sherri Chapman
- ▶ **Media Center**
 - ▶ Lagina Gross/Beth Ebenstein
- ▶ **Curriculum Design**
 - ▶ John Brown
- ▶ **Math**
 - ▶ Kim Pettig
- ▶ **English/LA**
 - ▶ Suzanne Lank
- ▶ **Social Studies**
 - ▶ Sarah Whelan
- ▶ **World Languages**
 - ▶ Sarah Whelan
- ▶ **PTAs**
 - ▶ Melynda Wilcox
- ▶ **AVID/TAG**
 - ▶ Jodie Peters/Donna Brearley

Student Focus Group

▶ Students...

- Desire for choices for how/when they learn
 - Understand everyone learns different
 - Desire for high quality educational environments
-
- ▶ Students feel high quality environments are spaces with:
 - Engaging and varying learning spaces
 - Natural daylight
 - Acoustic control
 - Ergonomic furniture
 - Group and individual work areas
 - Break out spaces

Planning Concepts

► Capacity

- Desirable class size :
 - 18–24 students (elementary)
 - 20–25 students (middle)
- Buildings sized to support enrollment
- Number of rooms based on staffing formulas

GRADE	# OF CLASSROOMS	CAPACITY	TOTAL
Pre-K / Pre-S	5	18	90
Kindergarten	5	20	100
Grade 1	5	22	110
Grade 2	5	22	110
Grade 3	4	25	100
Grade 4	4	25	100
Grade 5	4	25	100
Total	32		710

GRADE	# OF CLASSROOMS	CAPACITY	TOTAL
Academic Classrooms (four teams per grade)	36	20	720
Science	12	20	240
Foreign Language / Electives	7	20	140
CTE	3	20	60
Visual Art	1	25	25
Performing Arts (Music Drama)	4	25	100
Physical Education	7	25	175
Special / Alternative (Reading, ELL)	3	15	45
Total	73		1505
@ 80% Utilization			1208

FIG. 3.2 // CLASSROOM CAPACITY

FIG. 3.2 // CLASSROOM CAPACITY

Building Organization

- ▶ Academic Cluster Concepts
- ▶ Decentralized administration (middle school)
- ▶ Break out and itinerant spaces for collaboration
- ▶ Separation of community use spaces
- ▶ Enhanced security and visibility

Elementary School Building Organization

"PRIVATE SIDE" = SERVICE ACCESS / ALLEY

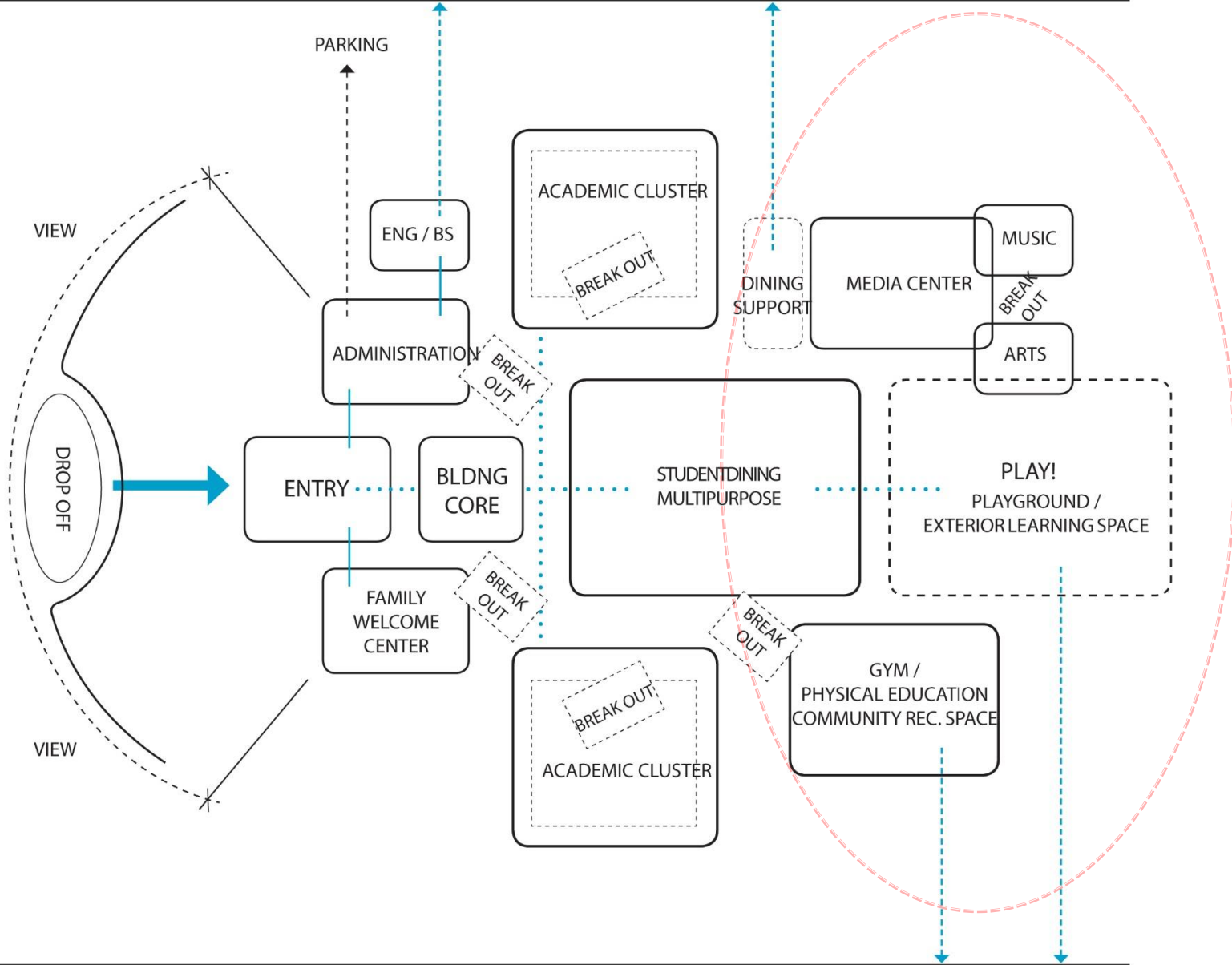
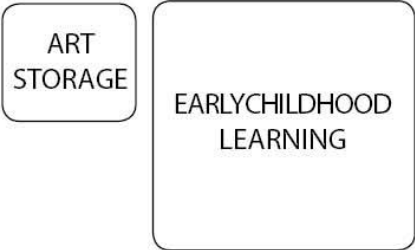
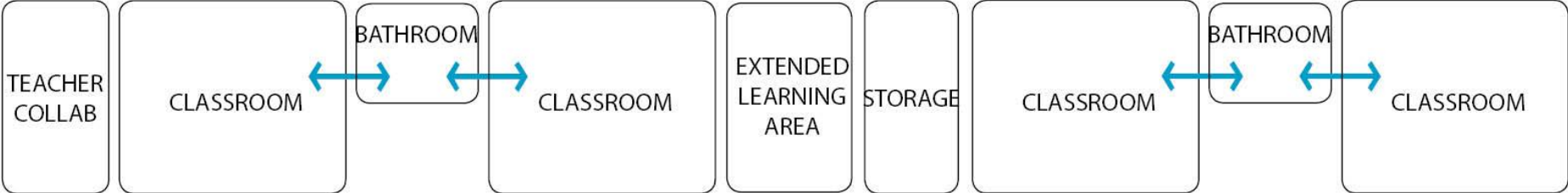
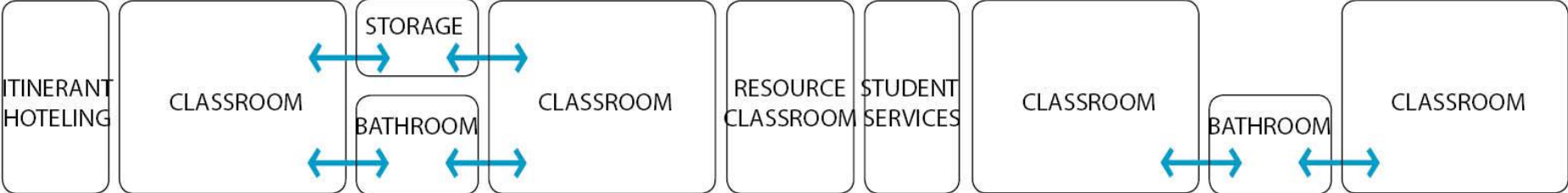


FIG. 5.0 /// ADJACENCY DIAGRAM

"PUBLICSIDE" = STREET PRESENCE, COMMUNITY ACCESS

Elementary Classroom Organization



Middle School Building Organization

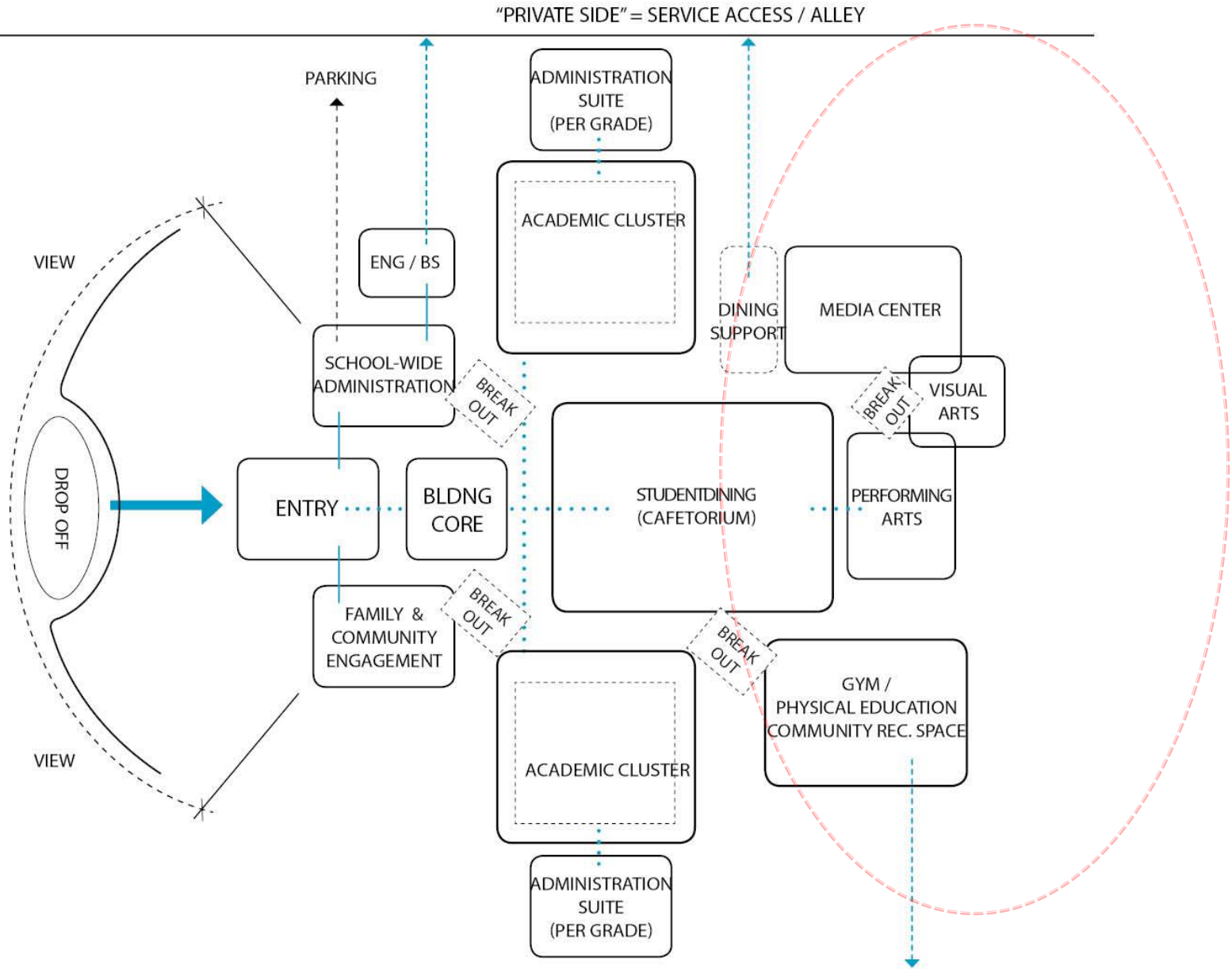


FIG. 5.0 /// ADJACENCY DIAGRAM

Middle Classroom Organization

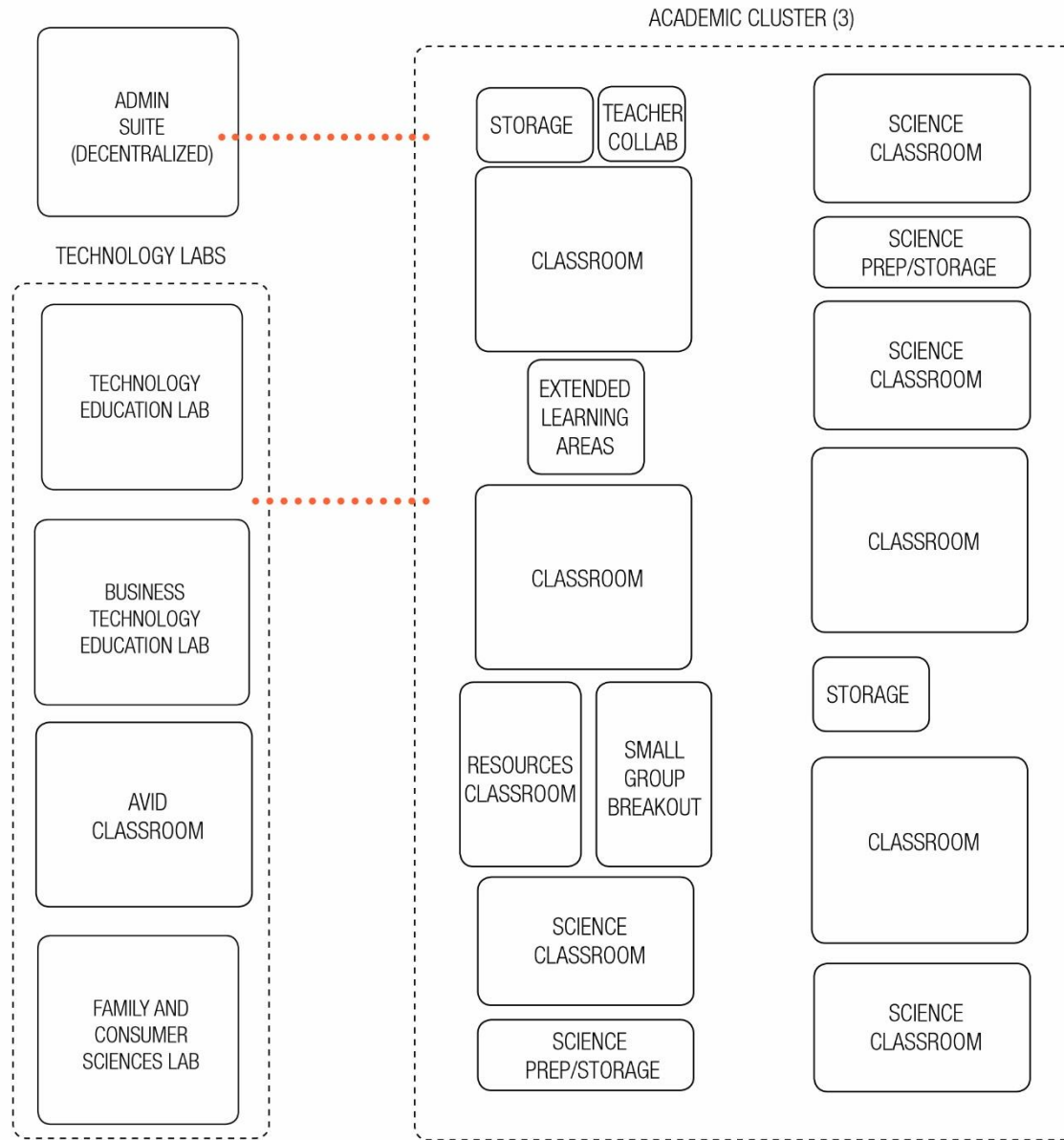


FIG. __ // CORE ACADEMIC ADJACENCY DIAGRAM

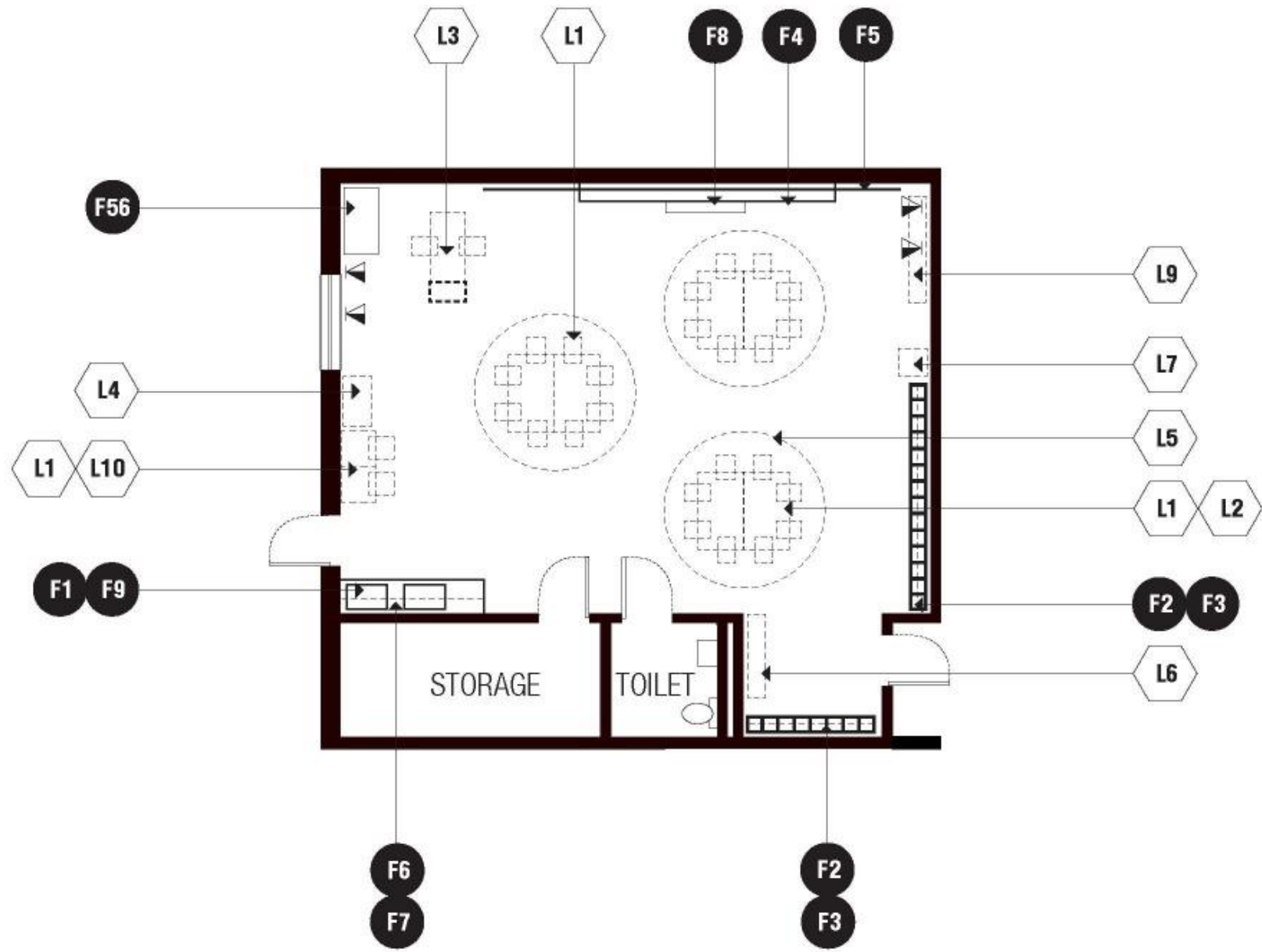
Academic Spaces

Learning to Live • Loving to Learn



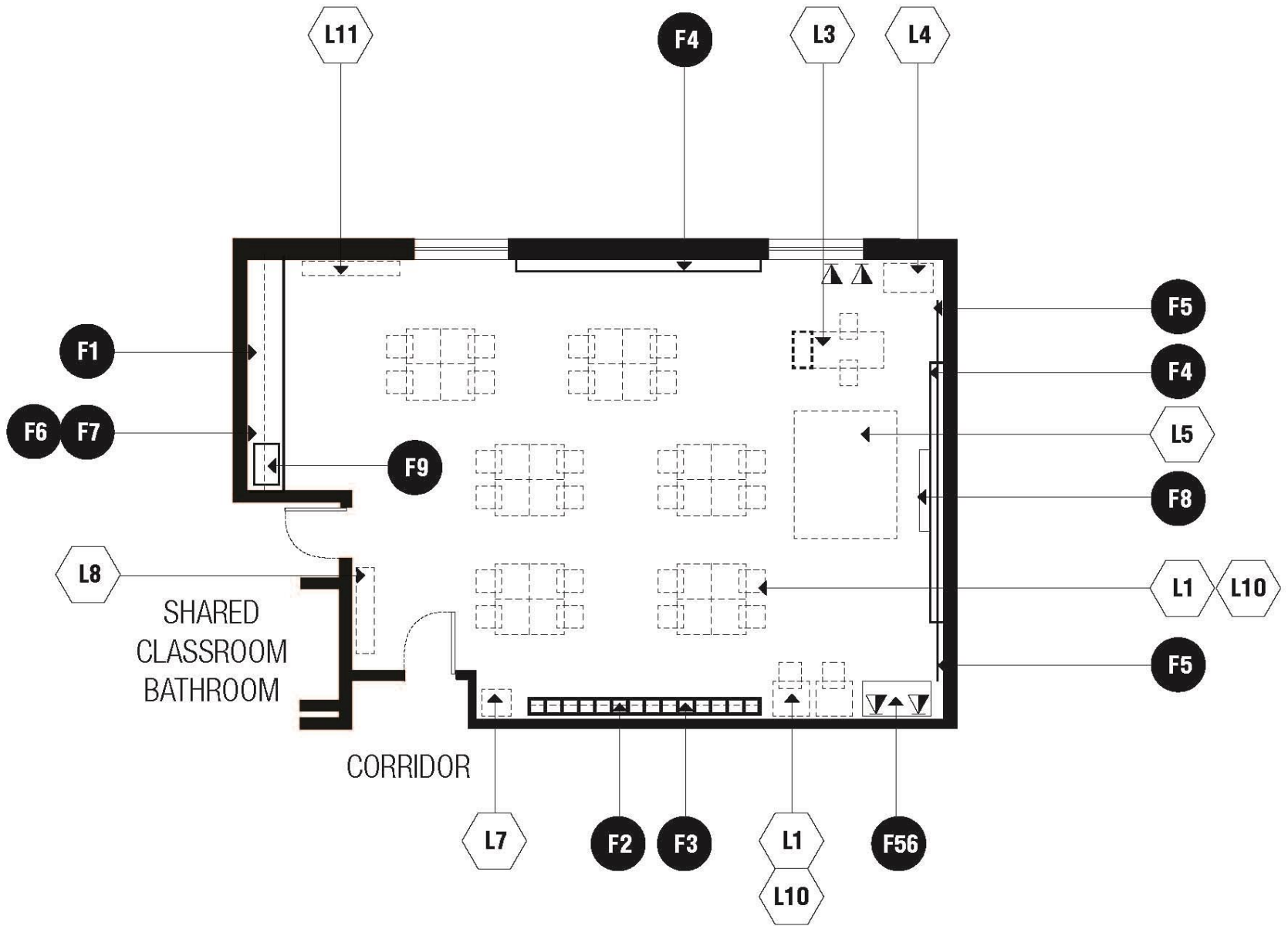
Academic Classrooms

- ▶ Flexibility
- ▶ Small collaborative groupings (Elementary Schools)
- ▶ Restrooms adjoin classrooms (Elementary school)
- ▶ Multiple teaching walls
- ▶ Breakout spaces

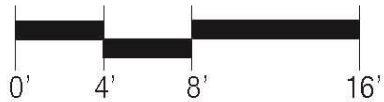


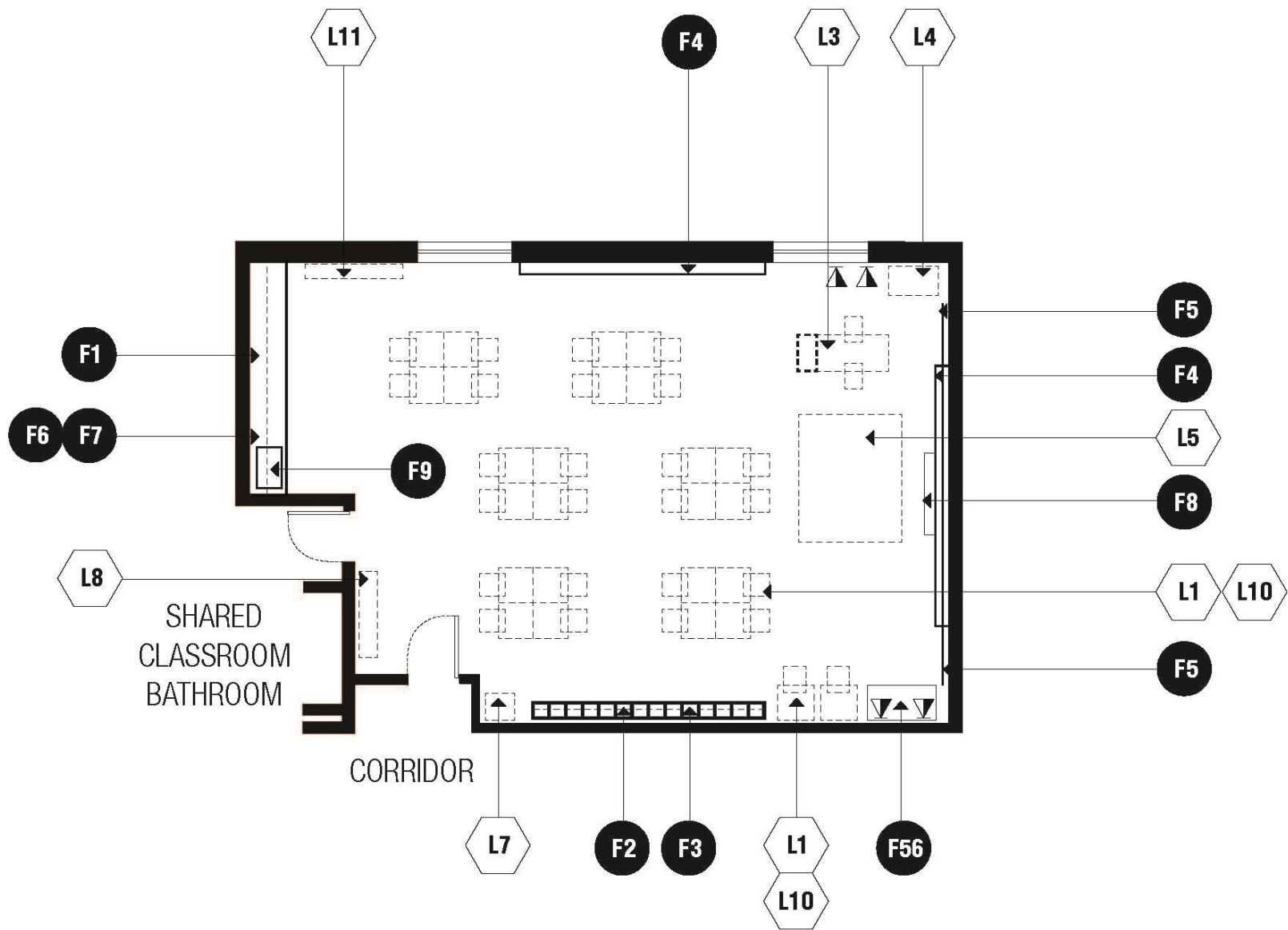
E-ACA /// PRE-K/ KINDERGARTEN CLASSROOM



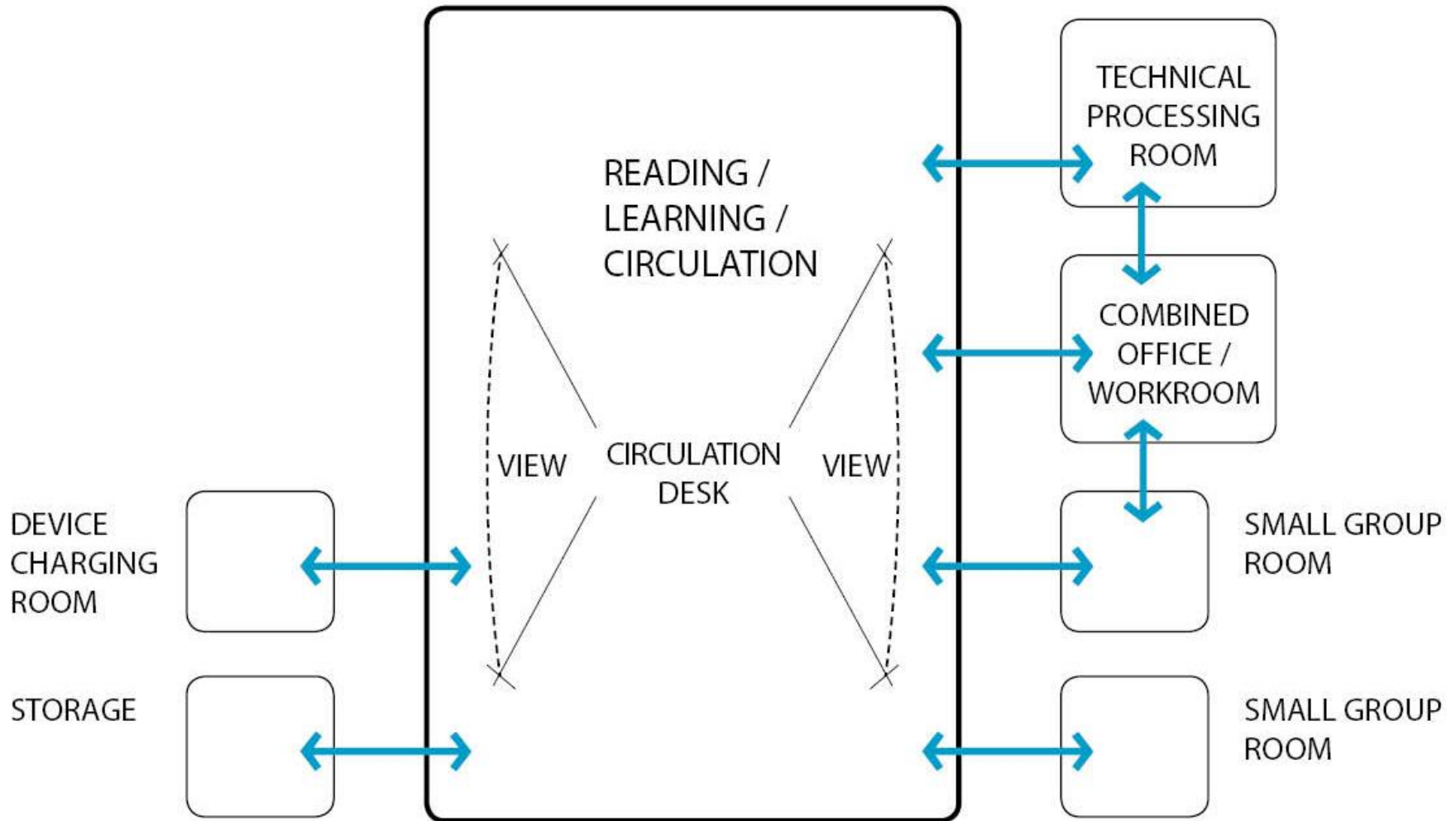


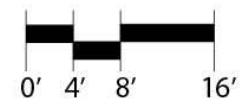
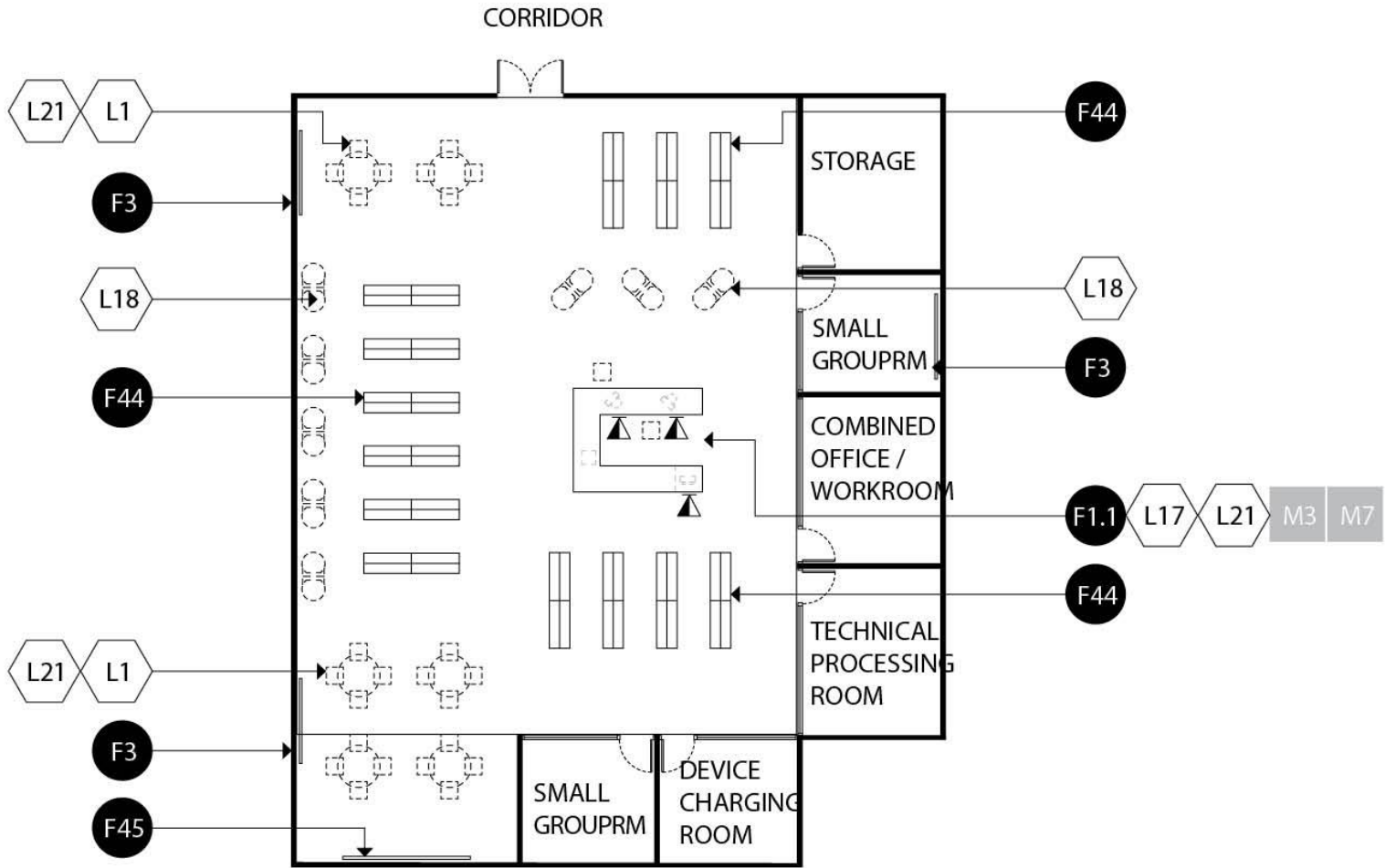
E-ACA /// GRADES 1 - 5 CLASSROOM



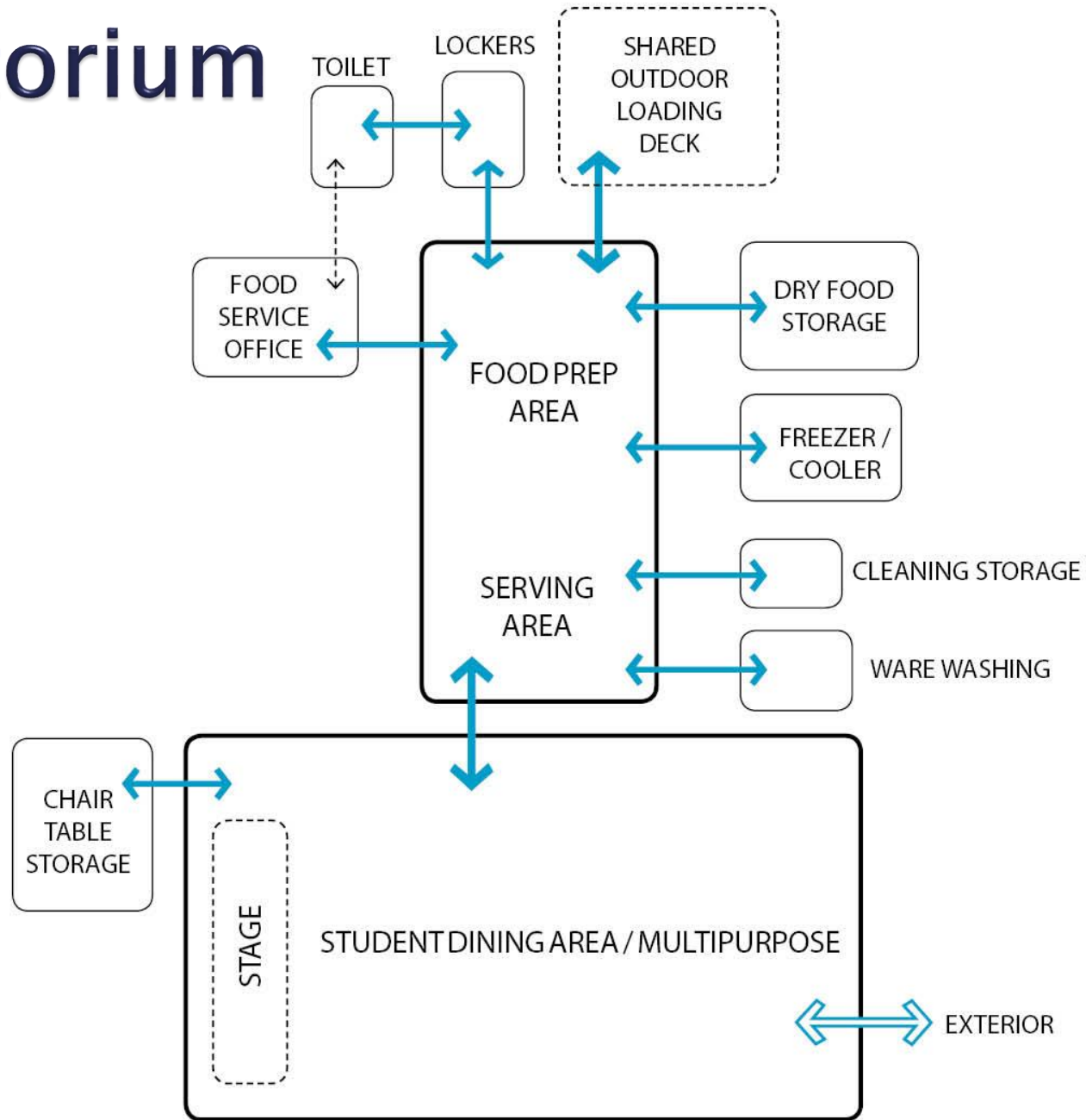


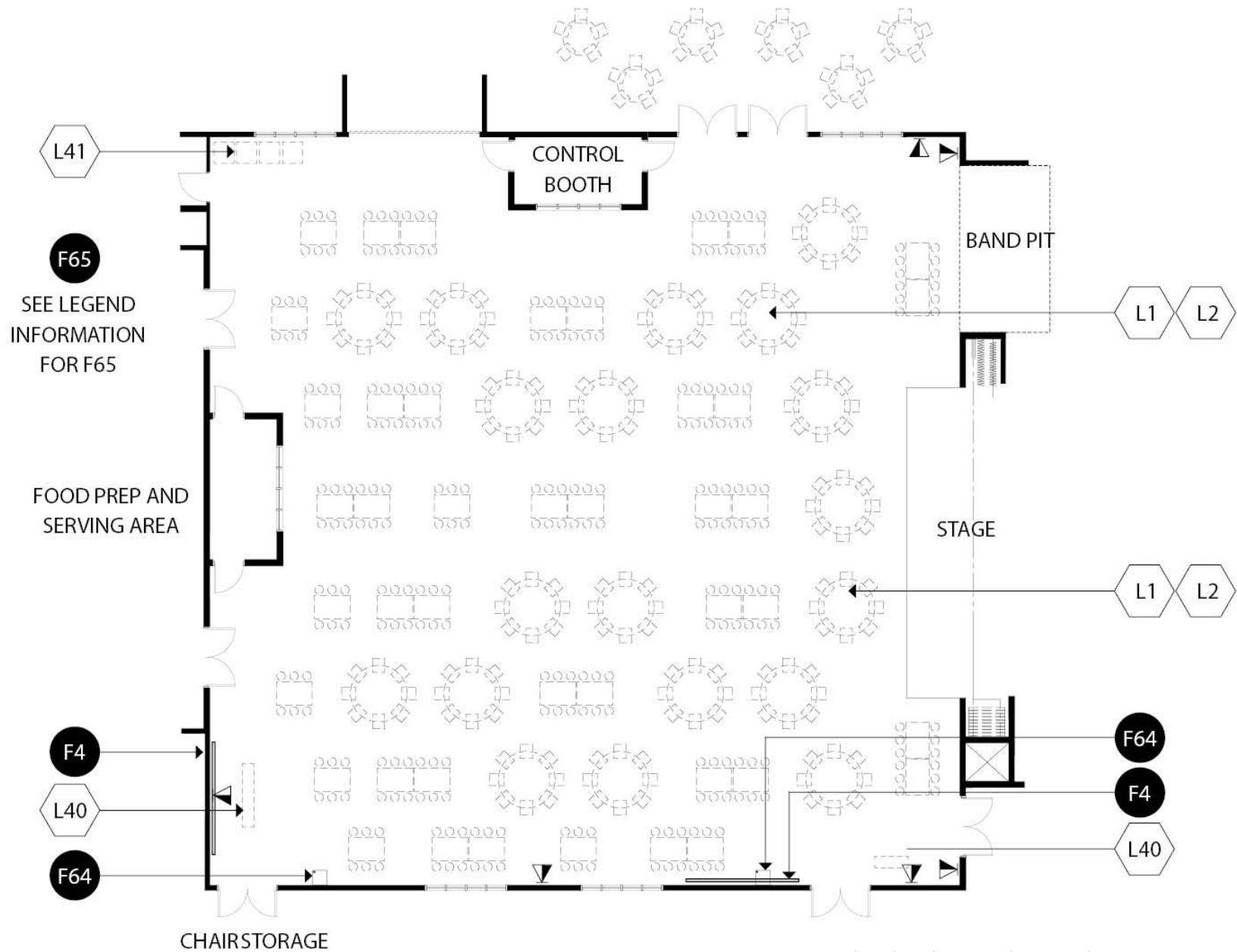
Media Center Adjacencies



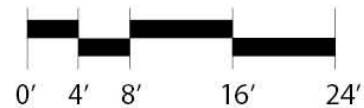


Cafetorium



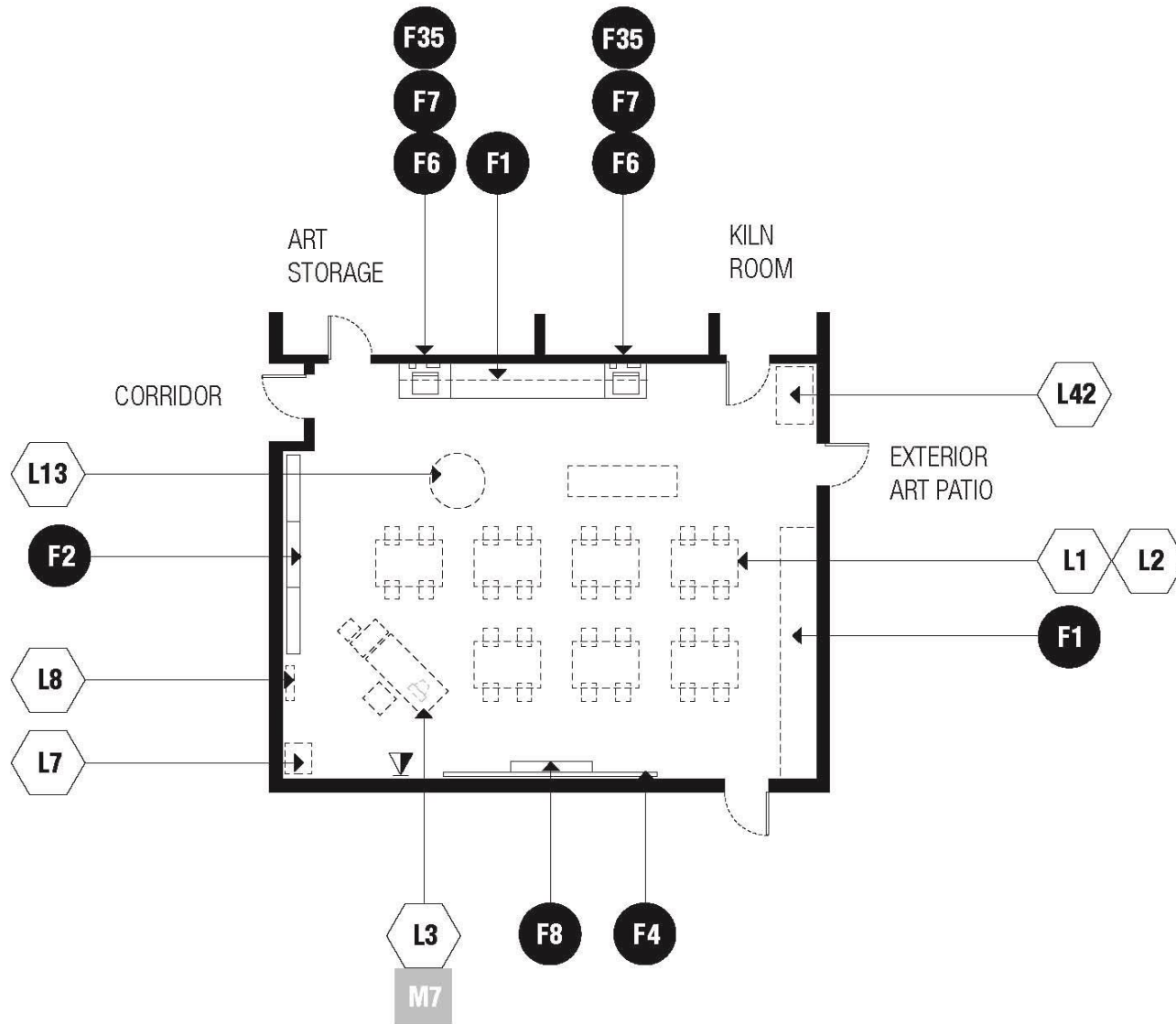


M-SD /// DINING / MULTIPURPOSE (GRADES 6-8)

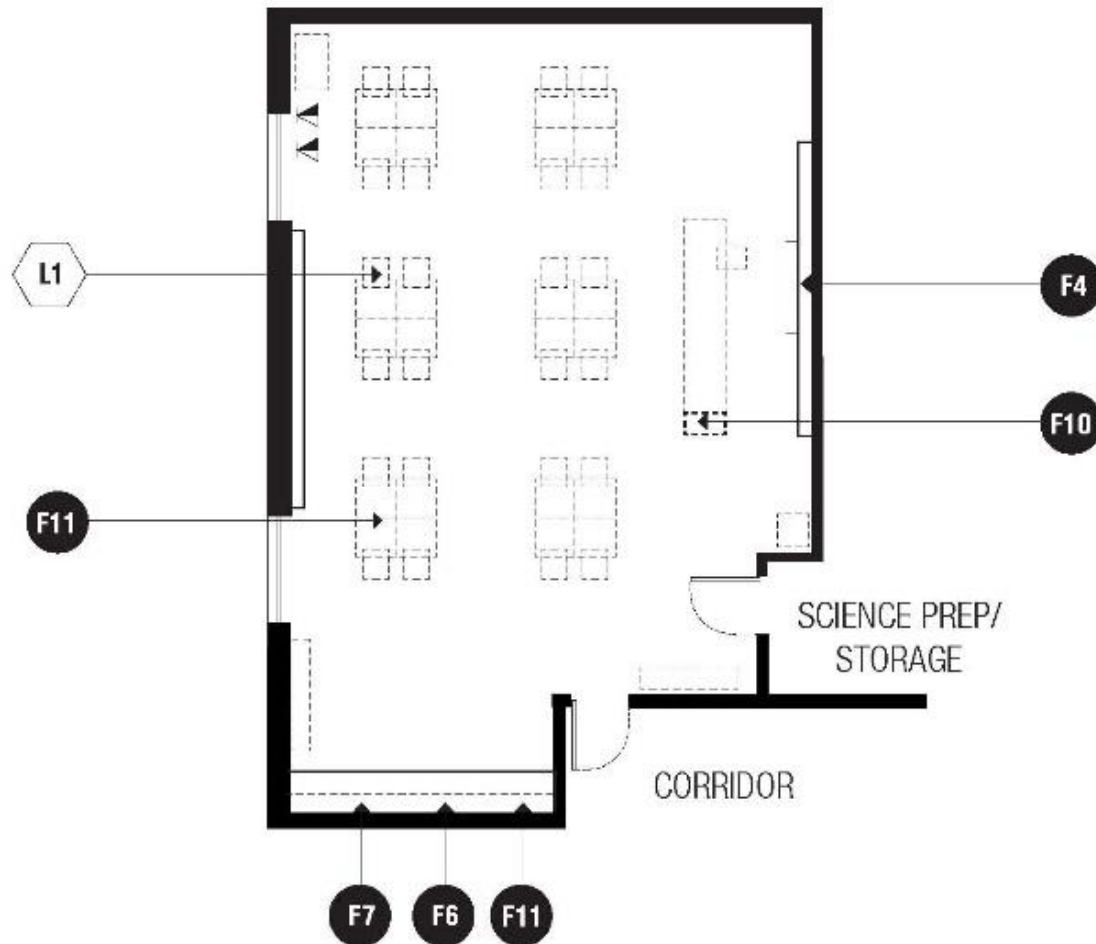




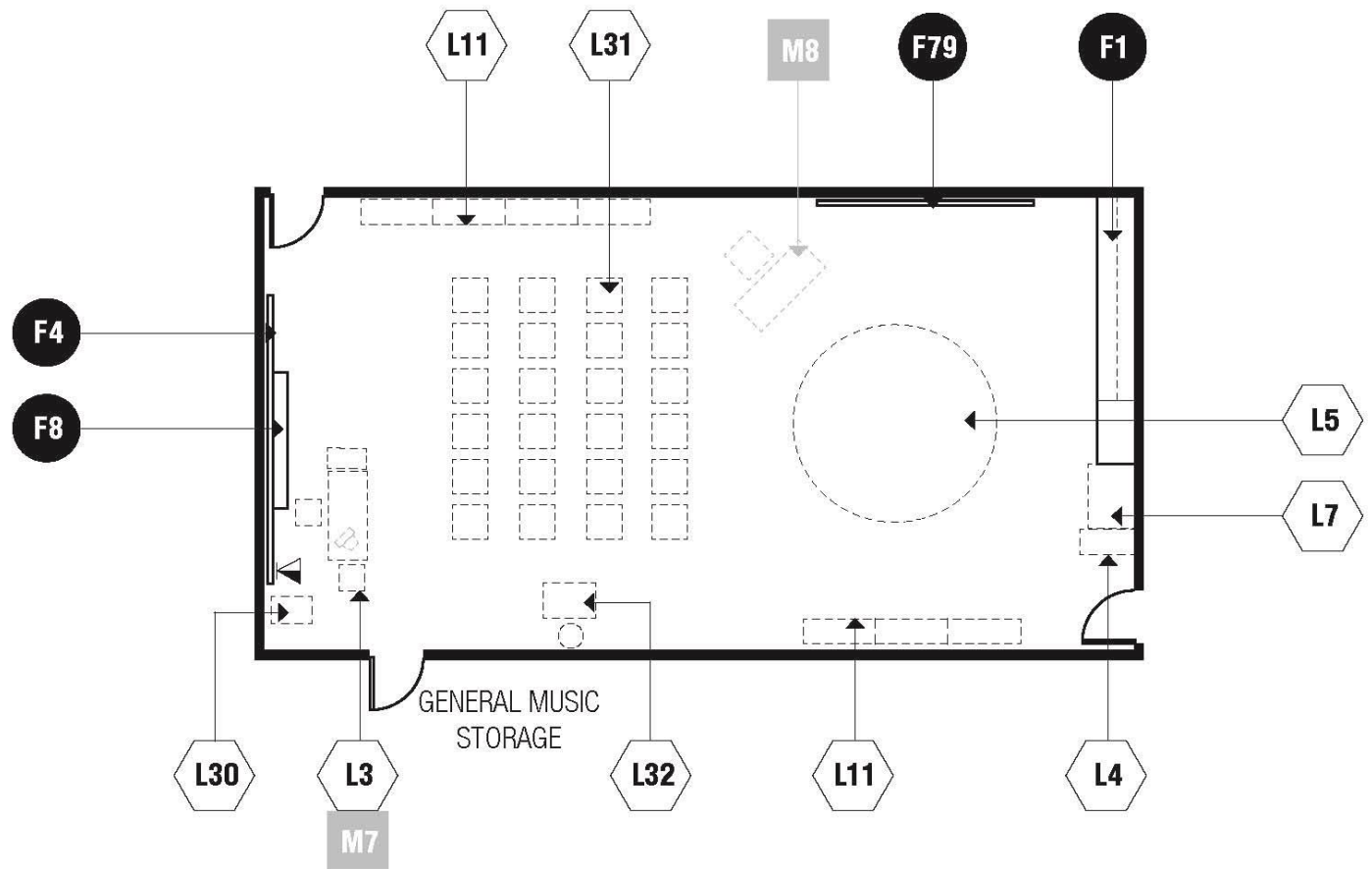
Typical Art Room



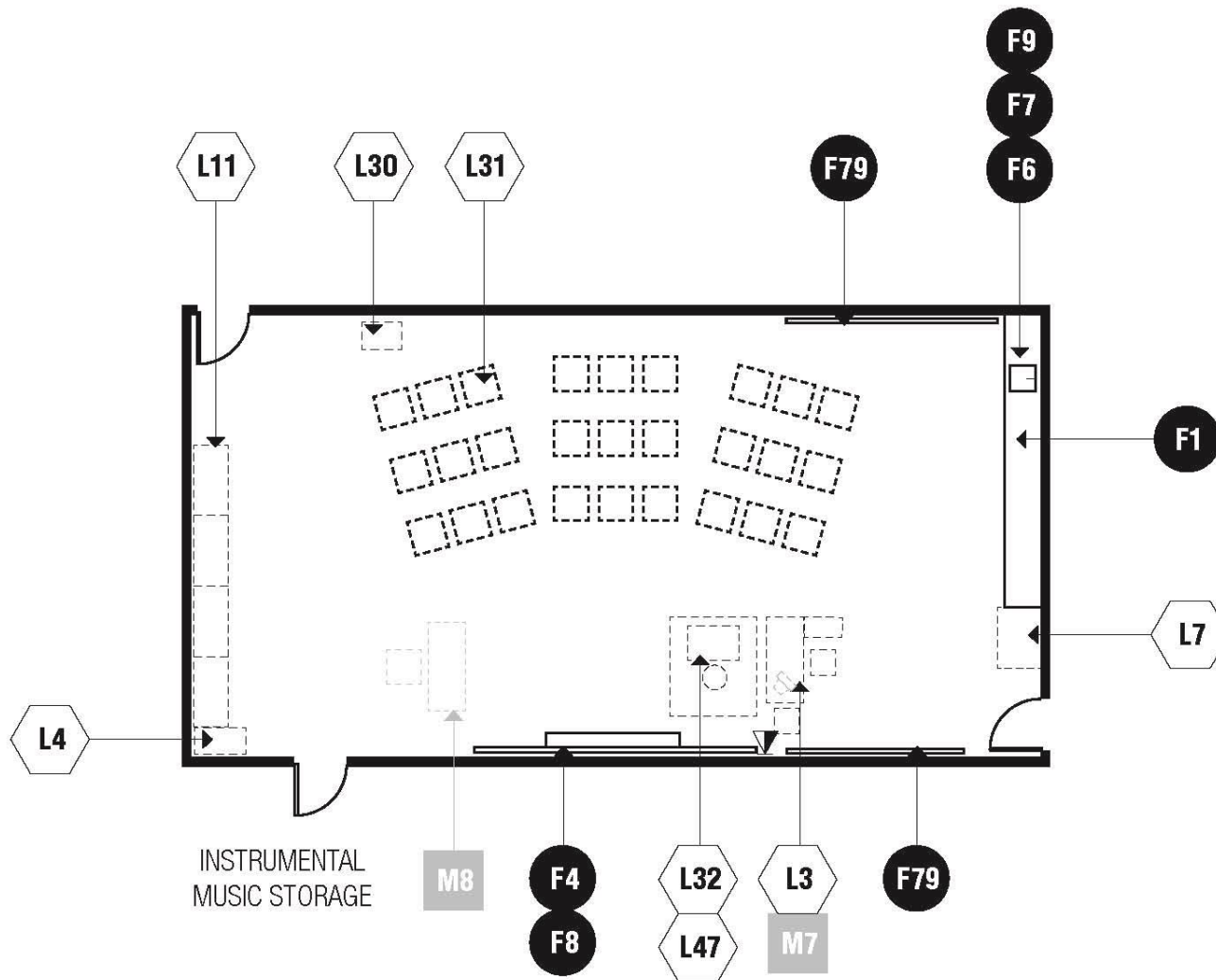
Science Room- Middle School



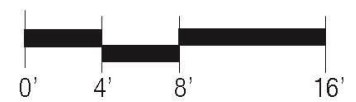
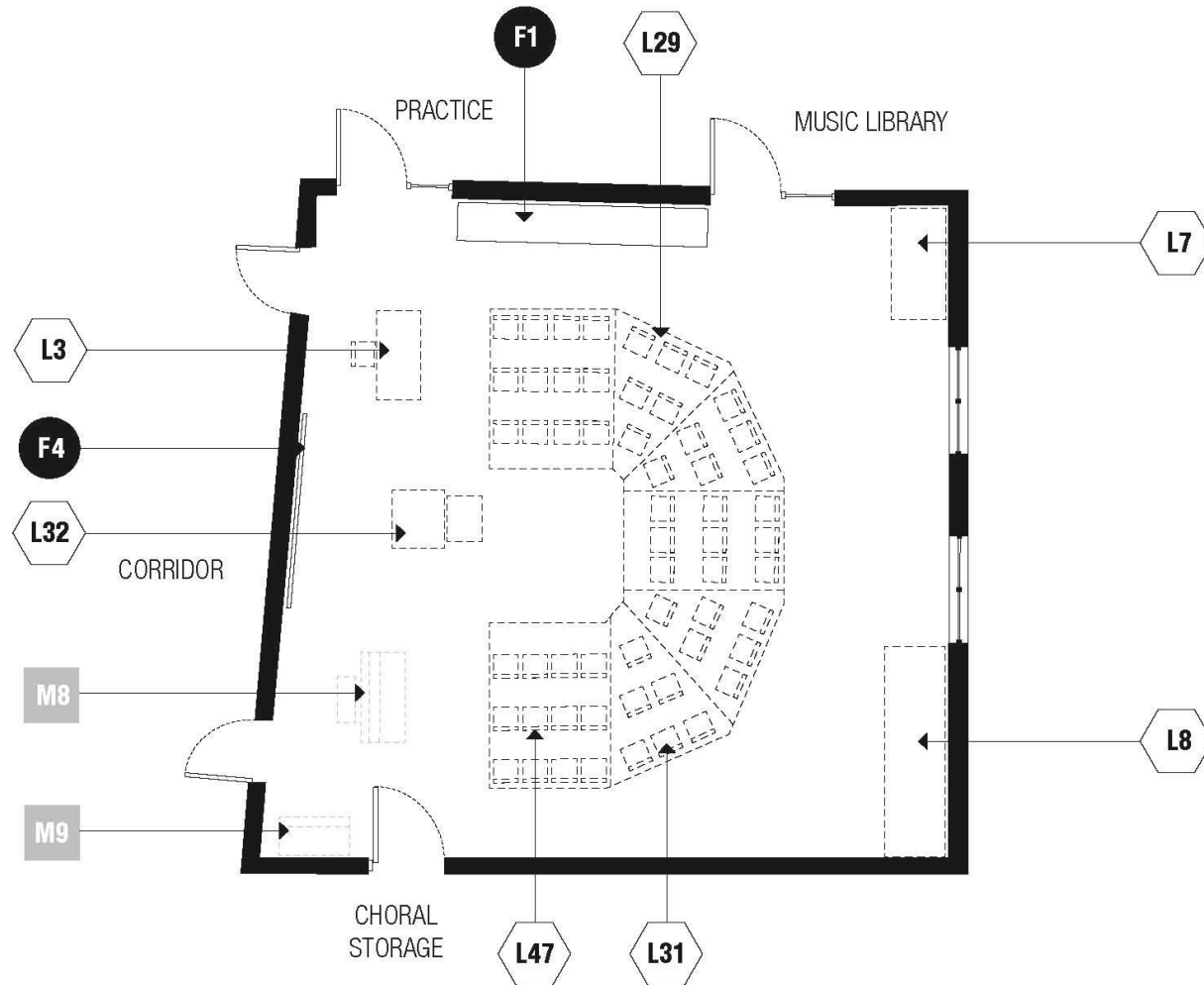
Elementary General Music



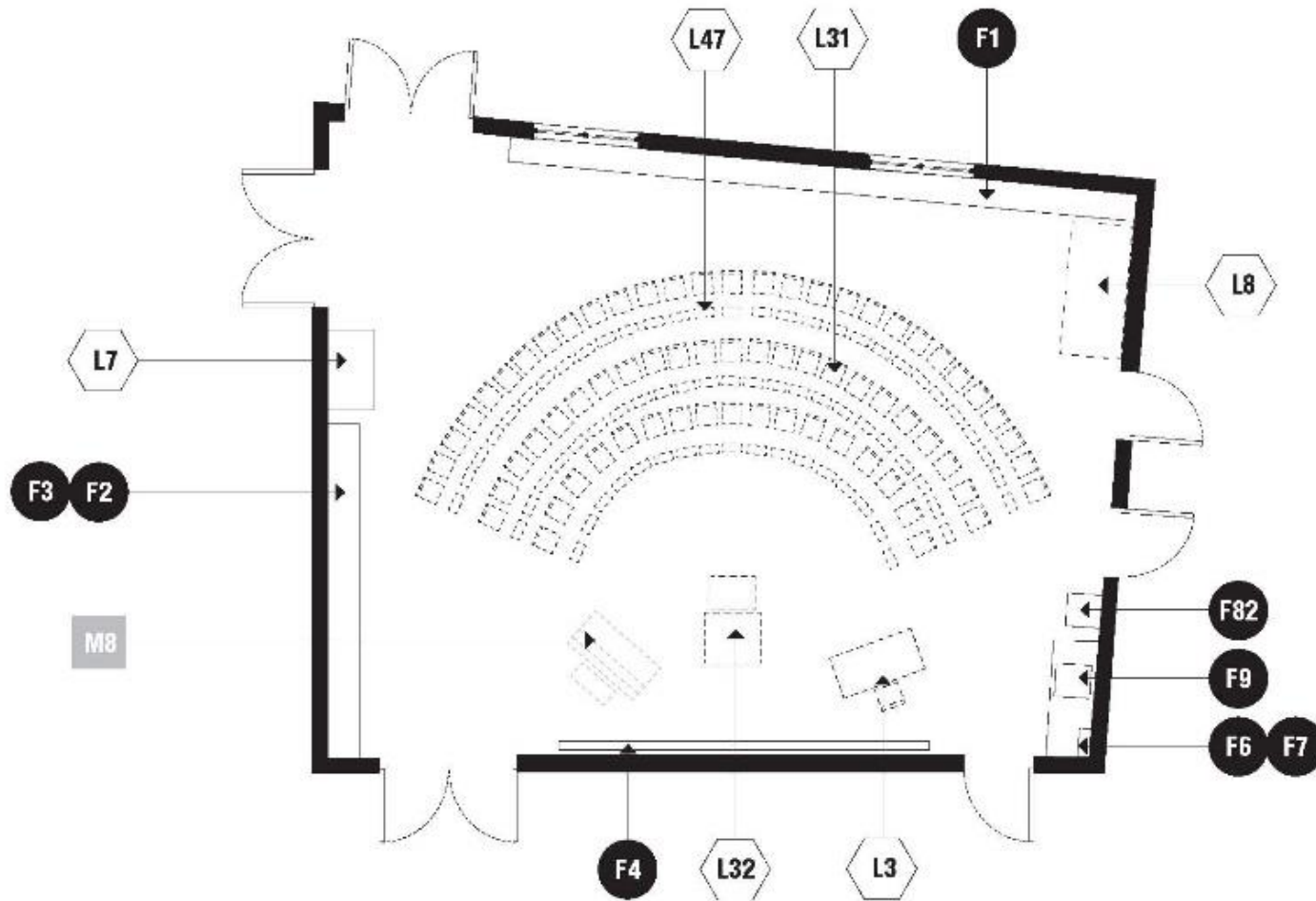
Elementary Instrumental Music



Middle Choral Room

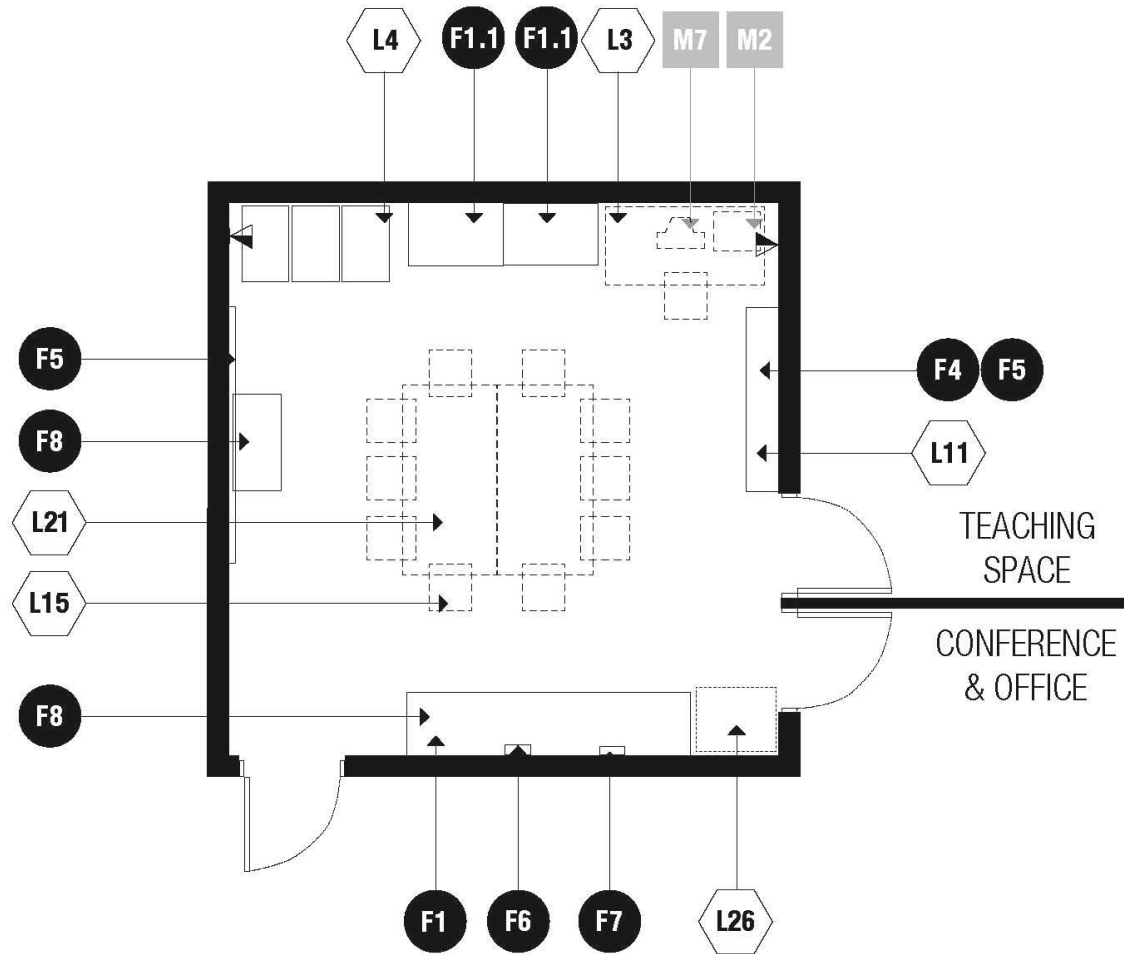


Middle Instrumental Room

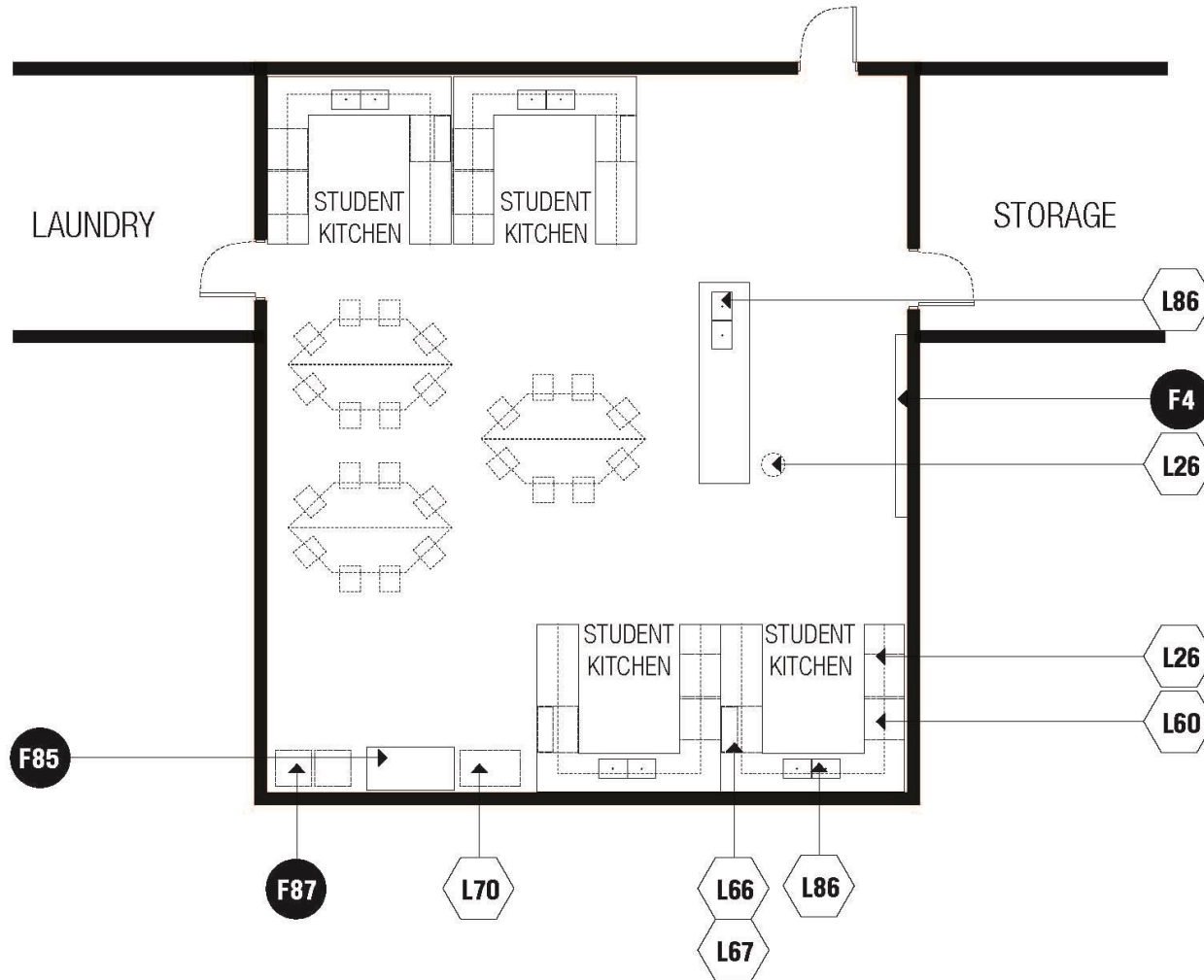


ACPS Unique Spaces

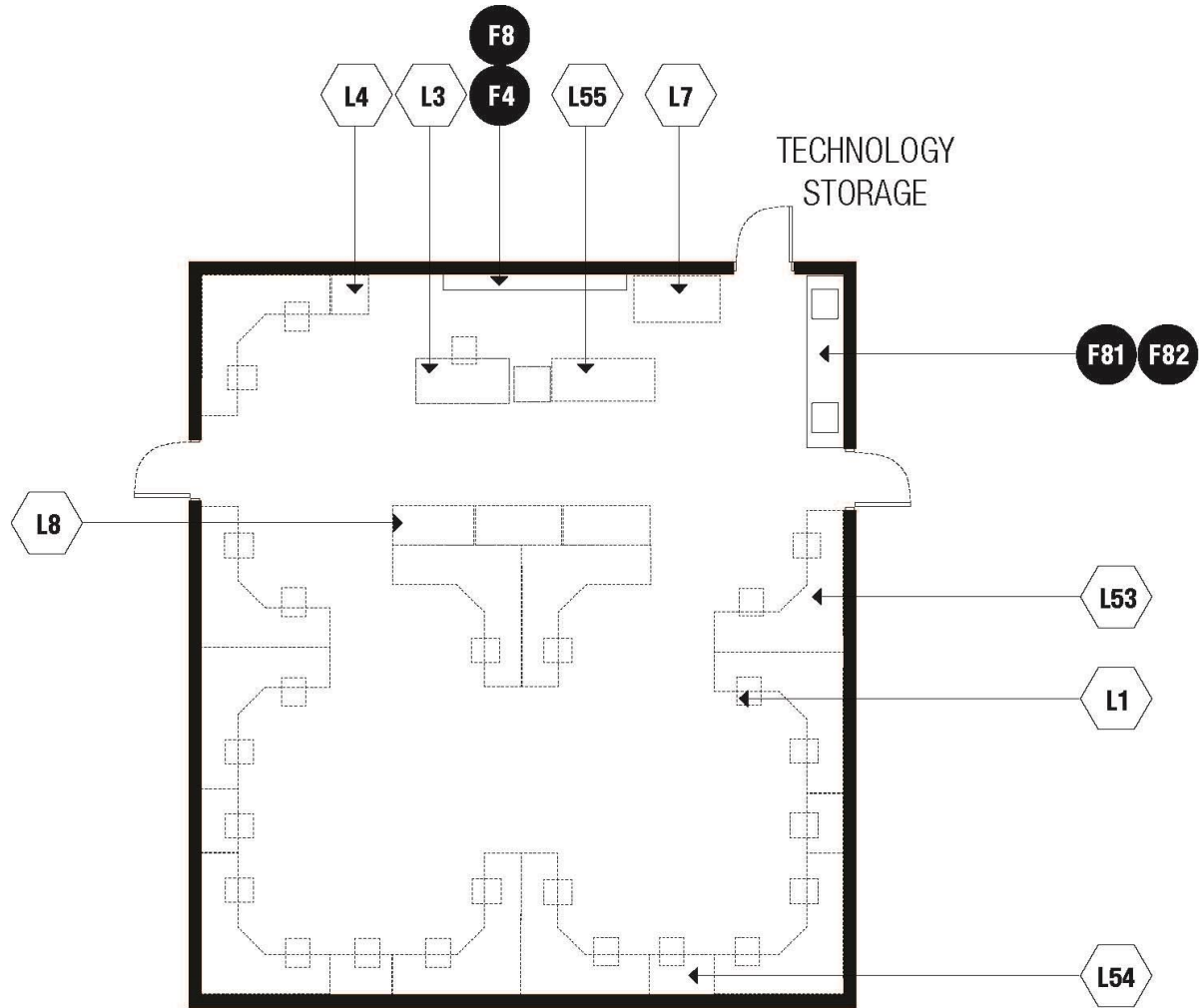
F.A.C.E. Center



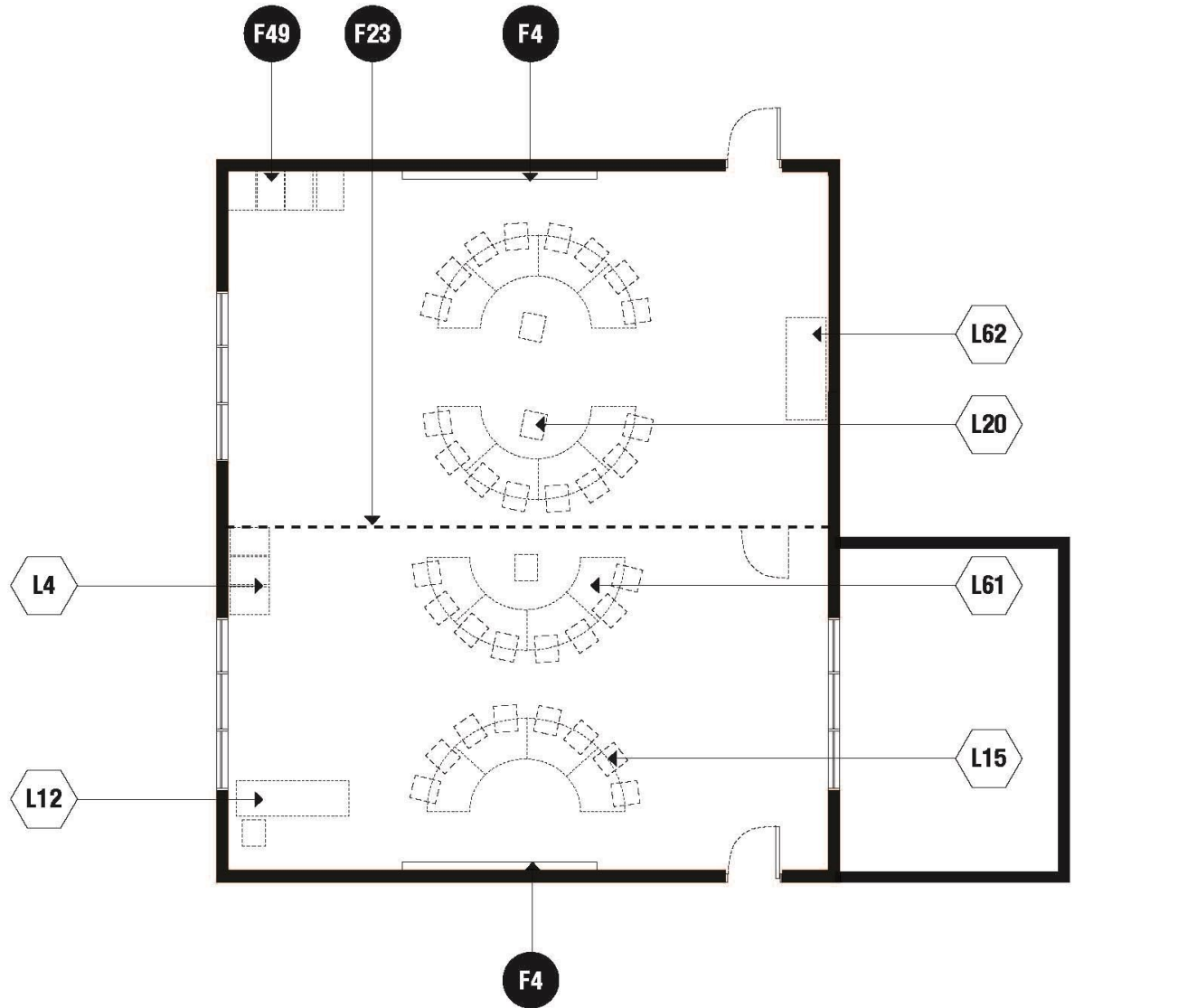
Career Technology – Consumer Science



Career Technology – Computer Technology



A.V.I.D. Classroom



Next Steps

- ▶ Existing Conditions Inventory
 - Building interiors completed
- ▶ Utilization Patterns
- ▶ Draft long-range plan



Planning & Zoning

Page updated Mar 10, 2014 9:55 AM

Share RSS Print

Long Range Educational Facilities Plan

The City of Alexandria and the Alexandria City Public School System (ACPS) are jointly developing a work program for a Long Range Educational Facilities Plan to improve facilities planning, accommodate the growing student population, and enhance educational programs and services.

As part of the program, a 19 member work group was established and is comprised of members from the community, ACPS School Board, City Council, Campagna Center, and the PTA Council, supported by ACPS and City staff. The workgroup meets on a regular basis, generally quarterly, to explore the major issues that will impact public school facilities over the long term and to guide staff in the development of a draft Long Range Educational Facilities Plan for consideration by the School Board and City Council.

The public is invited to all meetings associated with the project and is encouraged to stay informed about upcoming meetings through [eNews](#).

- [Work Group Members](#)
- [Joint COA/ACPS Work Program](#)
- [LREFP Work Program Supplement](#)
- [LREFP Update - October 15, 2012](#)



Please visit the links below for information presented during previous work group and subcommittee meetings.

For more information, please contact Laurel Hammig, Facilities Planner & GIS Specialist, ACPS, 703/461-4168 or Karl Moritz, Deputy Director, Planning and Zoning, City of Alexandria, 703/746-3804.

What's New?

- **The first of three community meetings** was held on February 19th at GW Middle School to kick-off the Ed Specs/School of the Future Subcommittee of the LREFP. Community members were introduced to the [subcommittee's workplan](#) to update educational specifications for elementary and middle schools. Future community meeting dates will be posted below. For more information on this work, please visit the [subcommittee's webpage](#).
- **UPDATED May 24, 2013: Recent Growth in Alexandria's School Enrollment: The New Normal?** This Powerpoint presentation summarizes information the LREFP Work Group has reviewed to date. The group will continue to conduct the research and analysis necessary to accurately forecast student enrollment in the city. We will update this presentation as more information becomes available.



Upcoming Meetings

- **Ed Specs/School of the Future Subcommittee Meeting - Thursday, March 13, 2014, 6:00pm**, Sister Cities Conference Room 1101, City Hall, 301 King Street.
- **2nd Community Meeting hosted by the Ed Specs/School of the Future Subcommittee - Tuesday, March 18, 2014, 7:00pm, T.C. Williams High School Cafeteria, 3330 King Street.** Join fellow community members in learning about the [subcommittee's workplan](#) to update educational specifications for elementary and middle schools, **and how you can participate in the process.** Childcare, pizza and simultaneous Spanish, Arabic and Amharic translation provided.
 - **Meeting Flyer**
 - [English/Spanish](#)
 - [English/Arabic](#)
 - [English Amharic](#)

The public is invited to all meetings associated with the project and is encouraged to stay informed about upcoming meetings through [eNews](#).

QUICK LINKS

- ▶ [About Planning & Zoning](#)
- ▶ [Development](#)
- ▶ [GIS & Maps](#)
- ▶ [Historic Preservation](#)
- ▶ [Neighborhood Planning](#)
- ▶ [Planning Commission](#)
- ▶ [Plans, Projects & Initiatives](#)
- ▶ [Statistics & Demographics](#)
- ▶ [Zoning Services](#)

RESOURCES

- ▶ [Administrative Special Use Permits](#)
- ▶ [Alexandria Master Plan & Citywide Chapters](#)
- ▶ [Applications & Forms](#)
- ▶ [Design Guidelines](#)
- ▶ [Development Viewer](#)
- ▶ [Frequently Asked Questions](#)
- ▶ [P&Z Dockets & Webcasts](#)
- ▶ [SUP Viewer](#)
- ▶ [Zoning Ordinance](#)

HOW DO I...

- [Find neighborhood parks?](#)
- [Start a small business?](#)
- [Learn about new development?](#)
- [Pay my taxes or parking citation?](#)
- [Report fraud, waste and abuse?](#)
- [Speak at a City Council meeting?](#)
- [Apply for a marriage license?](#)
- [Find information for retired City employees?](#)
- [Get information about permits?](#)
- [Search property and sales data?](#)
- [Find visitor information?](#)
- [Find volunteer opportunities?](#)
- [Obtain and review public](#)



Questions?

Learning to Live • Loving to Learn

