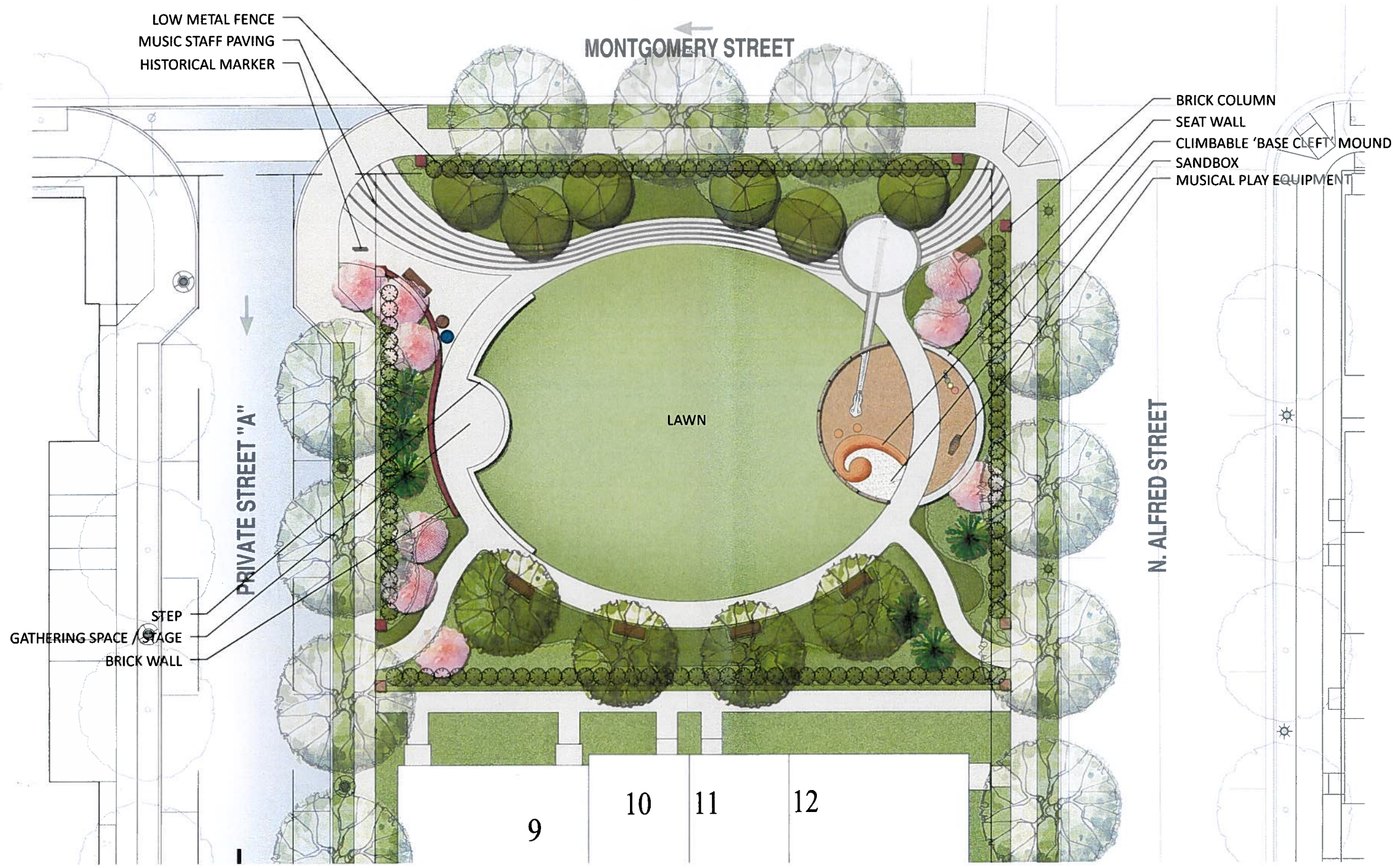


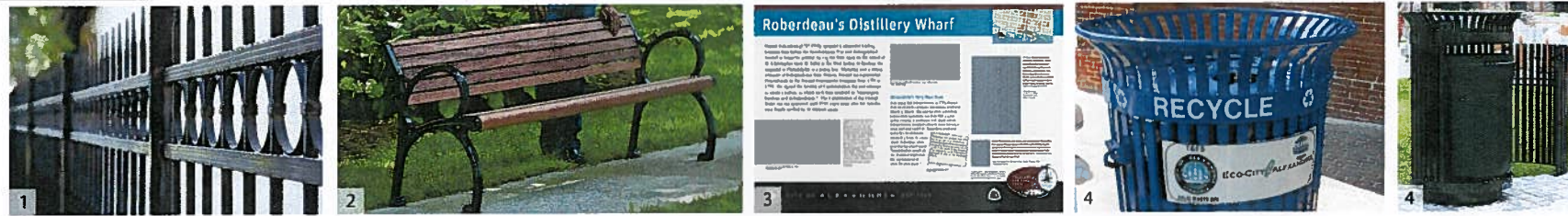


*Construction is anticipated to begin in the 4th quarter of 2013 or 1st quarter of 2014, and be complete in the 1st or 2nd quarter of 2014.



SITE FURNISHINGS

1. Ornamental metal fence
2. Bench
3. Historical marker
(location and content to be coordinated with City Staff)
4. Trash & Recycle Receptacle



PLAYGROUND

5. Concrete curb and mulch play surface
6. Low metal fence
7. Sandbox
8. Climbable 'base cleft' mound w/ rubberized surface
9. Musical play equipment
10. Seatwall



PAVING

11. Permeable pavers
12. Permeable paving (stone dust)
13. Gathering space / stage
14. Sandblasted / stained concrete



*The images above represent the type of materials, site furnishings and equipment to be used but are not the final product selections

NATIVE PLANT PALETTE

- LARGE DECIDUOUS TREES**
- Acer rubrum
 - Betula nigra
 - Platanus occidentalis
 - Quercus rubra
 - Quercus palustris
- MEDIUM DECIDUOUS TREES**
- Cornus florida
 - Chionanthus virginicus
 - Hamamelis virginiana
- EVERGREEN TREES**
- Ilex opaca
 - Tsuga caroliniana
- SHURBS, GRASSES, FORBES**
- Carex sp.
 - Eragrostis spectabilis
 - Hydrangea spp.
 - Ilex verticillata
 - Polystichum acrostichoides
 - Polygonatum biflorum
 - Rudbeckia hirta
 - Viburnum spp.

*This plant palette is intended to convey the type of material anticipated. Additional species may be incorporated in the final design.