

Style Guide

Old & Historic Alexandria District

City of Alexandria

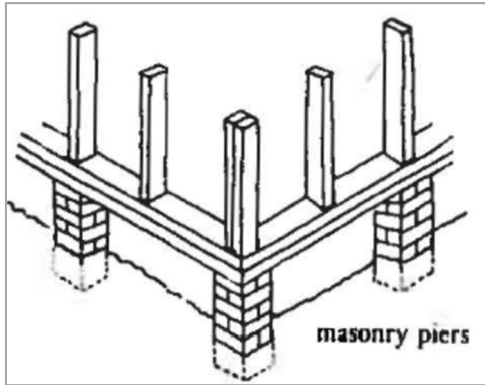
Massing



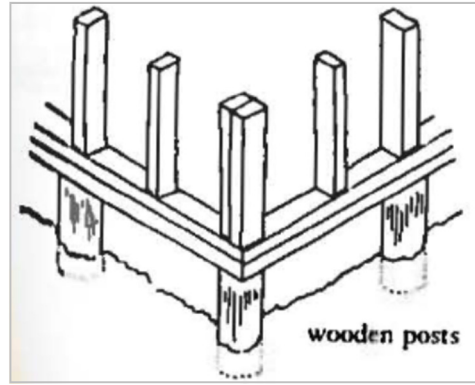
Be sure to distinguish the different massing on a structure. Additionally, ensure that all elevations/locations facing a public right-of-way are surveyed for each element (or 'tab').

- When surveying the foundation, survey all visible foundations for each massing, whether or not it is street facing.
- When surveying chimneys, count all visible chimneys—regardless if it is street facing or not.
- Under the 'Window' tab, list the elevation of windows surveyed under 'Window Notes'.

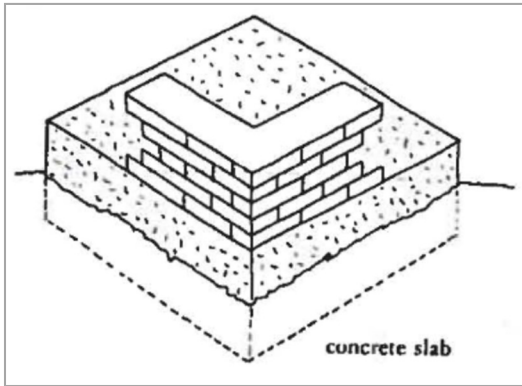
Foundation



Piers



Post-In-Ground

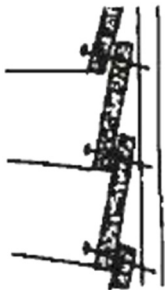


Slab



Solid/Continuous

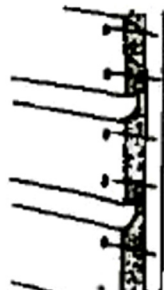
Wood



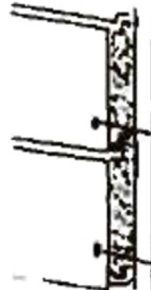
Lapped



Beveled



Drop (Novelty)



Shiplap-



Wood



Horizontal
Tongue & Groove



Channel



Shiplap
Vertical

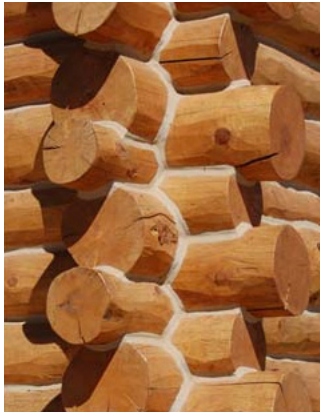


Board on
Board



Vertical
Tongue &
Groove

Wood



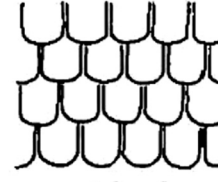
Log



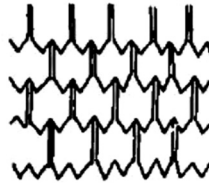
coursed



staggered



fishscale



sawtooth



diamond



chisel

Shingle

Exterior Finishes

Synthetic



Asphalt



Asbestos



Fiber Cement



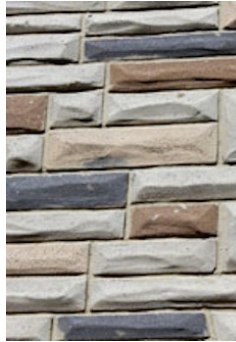
Composite



T-111



Masonite



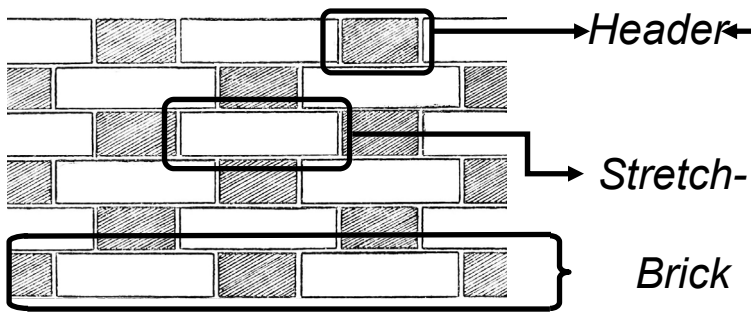
Formston



Vinyl

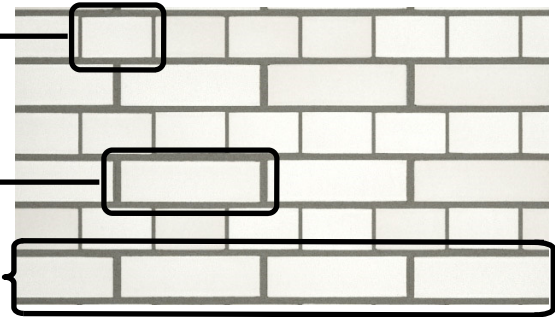
Exterior Finishes

Unpainted & Painted



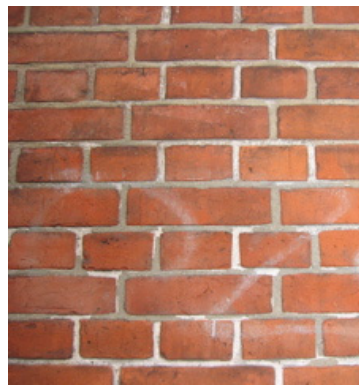
Flemish Bond:

Headers and stretchers alternate in each course with the center of each header over the center of the stretcher di-

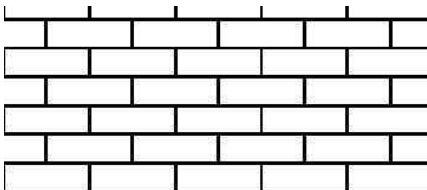


English Bond:

Alternating courses of headers and stretchers; the bricks in all stretcher courses line up verti-

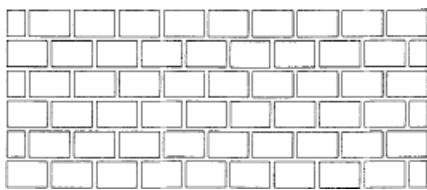
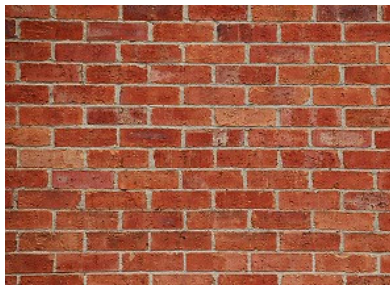


Unpainted & Painted Brick



Stretcher Bond:

Consisting of only stretchers, each alternate course of stretchers is moved over half the length of a brick



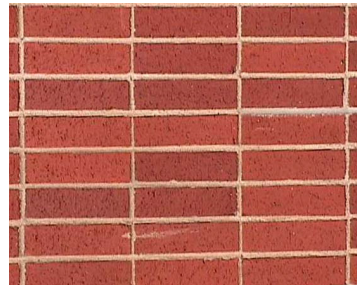
Header Bond:

Consisting of only headers, each alternate course of headers is moved over half the width of a brick

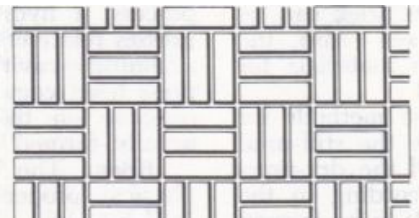


Stack Bond:

Consisting of only vertically aligned bricks.

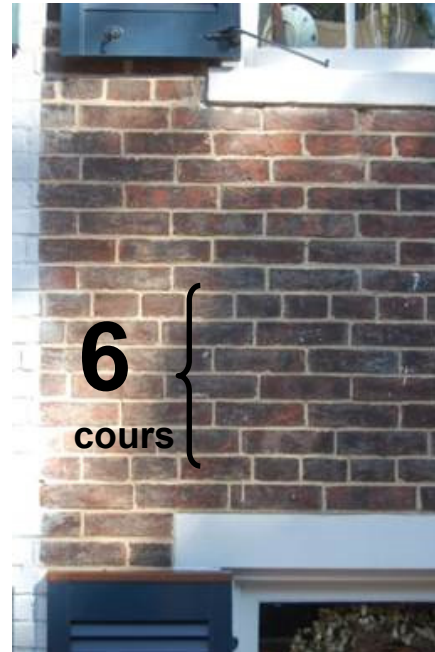
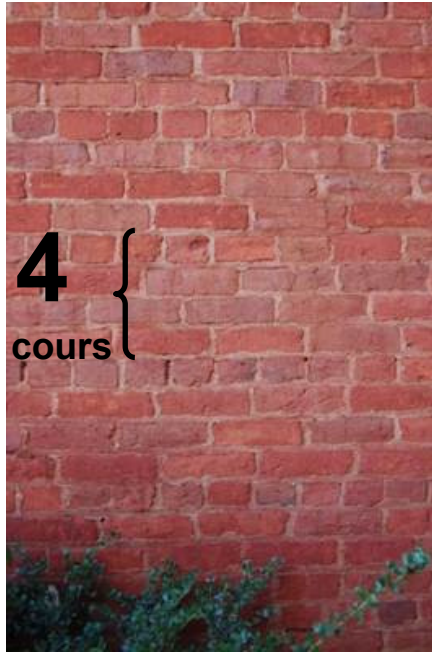


Unpainted & Painted

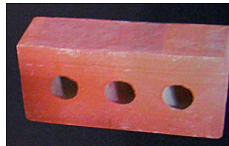


Basket Weave:

Composed of groups of two or three bricks laid perpendicular to all surrounding group.



Handmade Bricks: bricks molded by hand through the use of a wooden box, then fired. Popular up until the mid to late-1800s



Machine Made Bricks: bricks made with machinery, tend to be much more uniform than handmade bricks

Stucco



Stucco:

“An exterior wall covering consisting of a mixture of cement, sand, lime, and water; sometimes fiber or crushed stones are added for texture

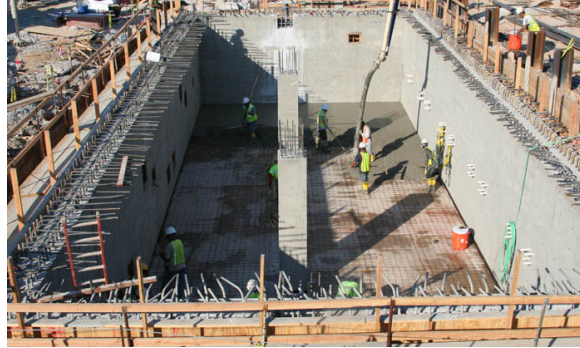


Exterior Finishes

Concrete



Precast Concrete



Poured in Place Concrete



Concrete Blocks



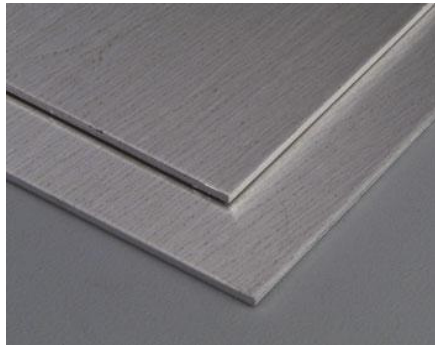
Dressed/Imitation Stone



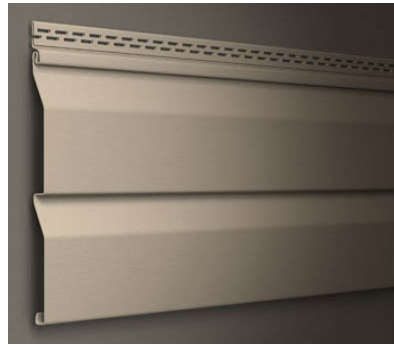
Metal



Corrugated Metal



Metal Sheet



Aluminum



Metal Shingle



Cast Iron



Copper

Stone



Fieldstone/Rubble



Dressed Stone



Slate



Marble



Sandstone/Limestone

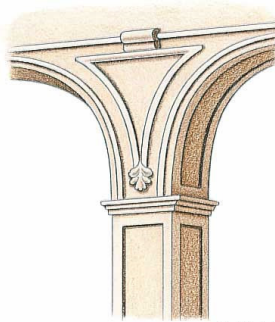


Granite

Wall Features



Engaged Columns/
Pilasters



Pier & Spandrel



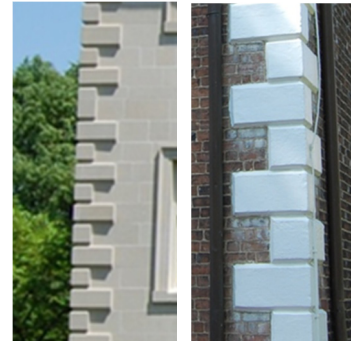
Tower or Turret



Belt/String Course



Water Table



Quoins

Exterior Finishes

Wall Features



Decorative or Carved Panels/Plaques



Date Stones



Vent

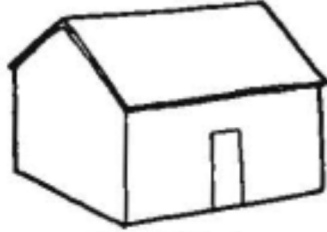


Exterior Finishes

Roof Type



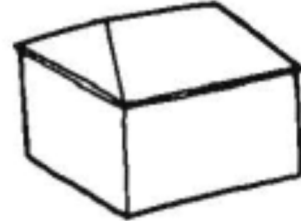
Gable (Front)



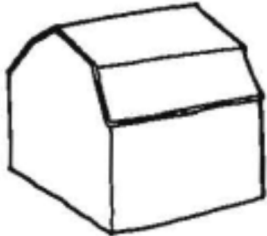
Gable (Side)



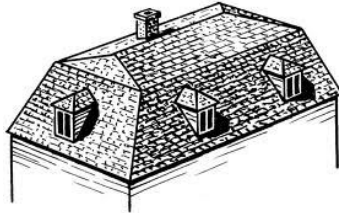
Flounder



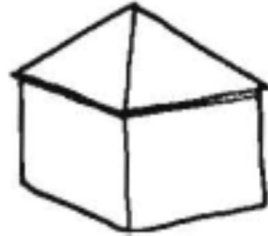
Hipped



Gambrel



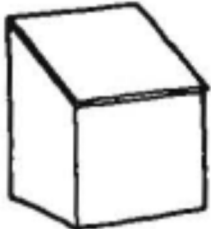
Mansard



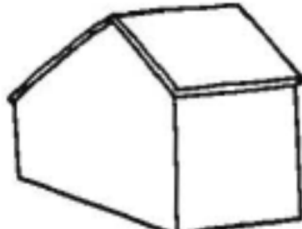
Pyramidal



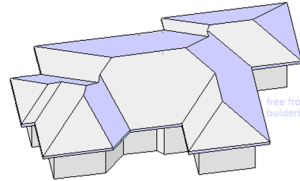
Conical



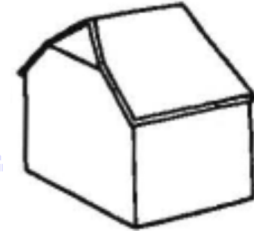
Shed



Saltbox



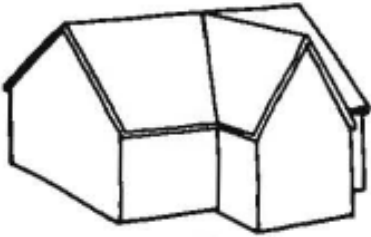
Complex



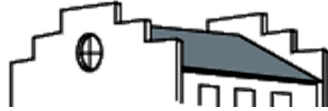
Clipped-Gable
(Jerkinhead)

Roof

Roof Type



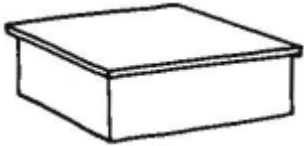
Cross Gable



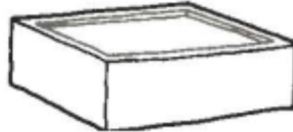
Stepped Gable



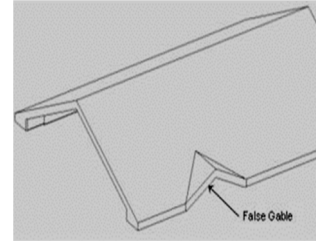
False Mansard



Flat/Low Slope



Flat/Low Slope
with Parapet



False Gable

Roof Materials



Ceramic Tile



Metal Shingle



Standing Seam
Metal



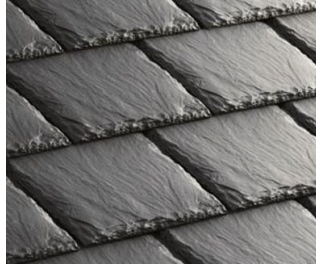
Slate



Living Roof



Built-Up Roofing
(EPDM,
TPO)



Synthetic Slate



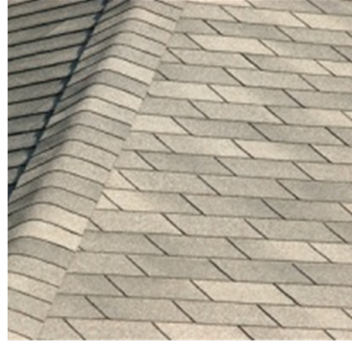
Tar & Gravel

Roof

Roof Materials



Corrugated Metal



Composition (3
Tab)



Composition (Rolled)



Composition
(Architectural
Grade)



Wood Shingles or
Shakes

Roof

Roof Architectural Fea-



Cupola/Lantern



Dome



Monitor



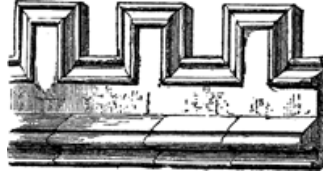
Belvedere



Finial



Cresting



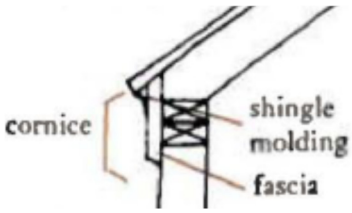
Crenellation



Pendant

Roof

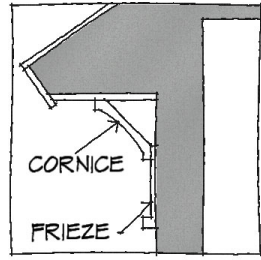
Cornice & Eave Types



Closed Eave



Exposed Raft-



Plain or Decorated



Bargeboard



Brackets



Cornice/Fascia

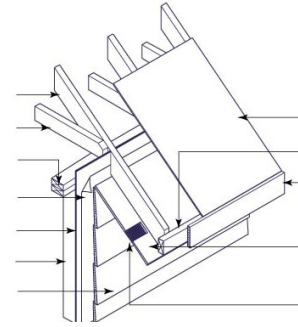
Cornice & Eave Types



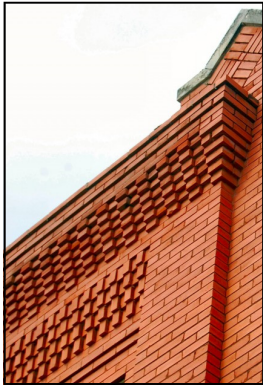
Parapet



Balustrade



Sloped Soffit



Corbeled Brick
Cornice



Molded Brick
Cornice



Plain
Boxed Cor-

Chimney Features



Chimney Hood

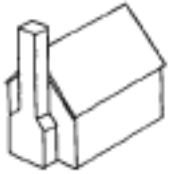
Corbelled

Flue/Vent

Decorative

Chimney

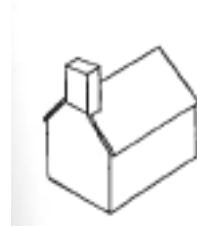
Chimney Location



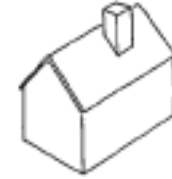
Exterior Gable
Wall



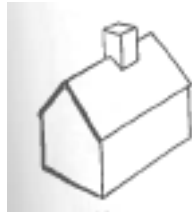
Exterior Eave



Interior End



Interior Slope



Interior Ridge



Central

Chimney

Light Configurations



12/12



9/9



6/6



6/9



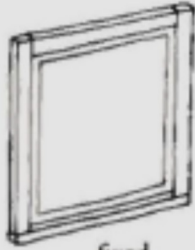
2/2



9/1

Windows

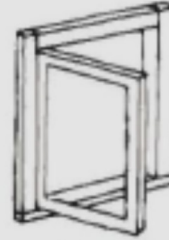
Window Operations



fixed



double- or single-hung
(upper sash may be fixed in early examples)



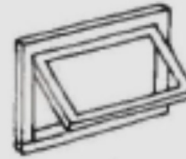
casement



sliding



hopper



awning



pivot



louver

Windows

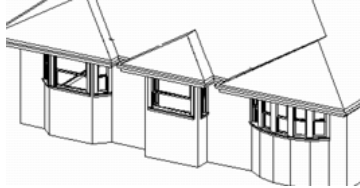
Windows—

- Under the 'Window' tab, list the elevation of windows surveyed under 'Window Notes'.

Decorative Windows



Oculus (Bull's Eye)



Bay/Box/Bow



Oriel



Palladian/
Venetian



Queen Anne Sash



Lattice



Lancet



Tracery

Windows

Decorative Windows



Round/Elliptical



Lunette

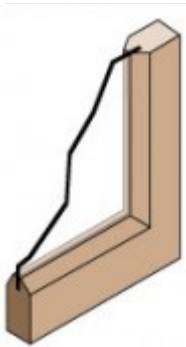


Arched



Foil

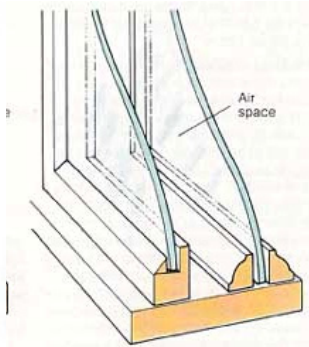
Window Glazing



Single



Double



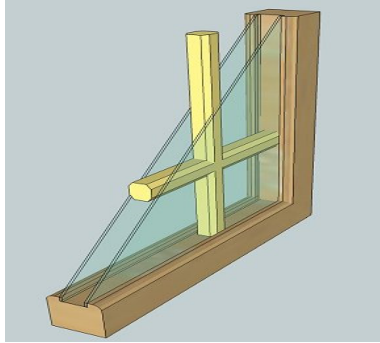
Single with Storm Window

Wavy/Cylinder



Windows

Window Muntin Style



Sandwich Muntins



Snap-In-Grids



SDL (simulated divid-
ed light)



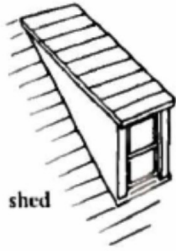
TDL (true divided)

Windows

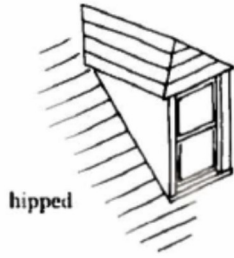
Dormer Window Types



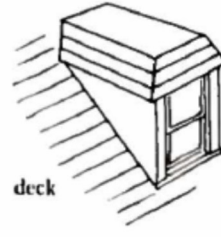
gabled



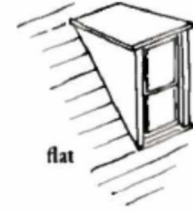
shed



hipped



deck



flat



eyebrow



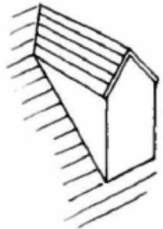
segmental



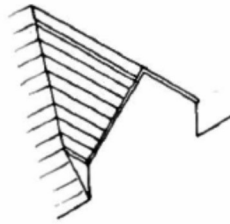
arched



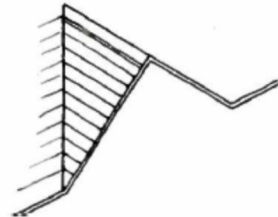
inset



roof dormer,
with or without
side walls



wall dormer,
always with
side walls



cross gable,
always without
side walls

Windows

Door Type



Single Panel



Two-Panel



Four-Panel



Six-



Flush



Multi- Light
Glazed (French)



Modern/Contemporary



Doors

Porch Type



Stoop/Platform



Portico/Entry
Porch



Overhang/
Awning



Balcony
(Cantilevered)



Pent Roof

Porch

Georgian



Wood, Fishscale Shingles Stained Red



400 Prince St., c. 1797

Flush, wide-board siding
painted white or oxide red,
typ.

517-519 Duke St.
c. 1786

General

Georgian



General

Federal

- Lunette Window
- Side Gable Roof w/
Front Gable
- Simplified Stone Lintel
Over 6/6 Window Sash
- Flemish Bond Brick
- Palladian Window
- Elliptical Arch Above
6-Panel Door w/
Sidelights
- Slender Colonettes
- 5-bay Center Hall Plan



General

Greek Revival

Classical Entablature
on elevated wall

Cast Iron (?) Window Hood

6/6 & 9/9 Windows
in new locations

Classical Entablature &
Ionic Columns on Porch

4-panel Door w/
Transom & Sidelights



General

Greek Revival



Side Gable Roof w/
lower slope

Molded Brick
Classical Cornice

Stone Lintels

Extruded Brick in
Running Bond

Windows Become Smaller
At Each Floor

Door Surround w/ Full
NeoClassical Entablature
& Pilasters

Use of Octagon Form

Cast Iron Balcony Rail

Simple Granite, Marble or
Seneca Sandstone Steps



General

Greek Revival

Windows in Frieze



General

Gothic Revival



General

Italianate

Bracketed, Dentiled Cornice & Frieze

Low Slope Roof Sheds to Rear

Cast Iron Head & Sill
with 1/1 Windows



Incorrect 6
panel door

General

Romanesque



Polychrome Slate

Semicircular Arch

Slate or Tile Roof

Molded Copper Trim

Copper Window Bay

Visually Heavy Massing
& Dark, Earth-Tone Colors

Rusticated Seneca
Sandstone Base



General

Second Empire

Mansard Roof w/ Slate
Fancy Cut Shingles

Bracketed Cornice

Segmental Arch over Windows

Original 2/2 Windows

Inappropriate 6/6
replacement windows

Bracketed
Entry Architrave

2/2 windows



General

Queen Anne

Fishscale Shingle Siding

Knob & Spool Fretwork Porch

Corbeled Brick Cornice
w/ Low Slope Shed Roof

Molded Brick Segmental Arch
Over 1/1 Windows



General

Queen Anne



Decorative Brick Patterns

Front Gable & Bay
Provide Vertical
Expression

Corbeled Brick Cornice

Molded Brick
Segmental Arch

1/1 Windows

Patterned Brick Panel

Brick String Course



General

Beaux Arts



General

Colonial Revival



General

Moderene



General

Art Deco



General

International



General

Notes