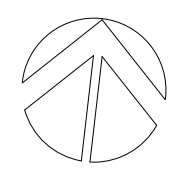


SEAL



Perkins Eastman

1100 LIBERTY AVENUE
PITTSBURGH, PA 15222
T: 412.456.0900
F: 412.456.0906

Owner:
GOODWIN HOUSE INCORPORATED
4800 FILLMORE AVENUE
ALEXANDRIA, VA 22311 TEL: (703) 820-1488

Construction Manager:
ADVANCED PROJECT MANAGEMENT, INC.
4530 WALNEY ROAD, SUITE 202
CHANTILLY, VA 20151 TEL: (703) 263-3100

Civil / Site:
BOWMAN CONSULTING
2121 EISENHOWER AVE, SUITE 302
ALEXANDRIA, VA 22314 TEL: (703) 548-2188

Landscape:
MICHAEL VERGASON
LANDSCAPE ARCHITECTS, LTD.
1102 KING STREET, 2ND FLOOR
ALEXANDRIA, VA 22314 TEL: (703) 836-5557

Structural:
TADJER-COHEN-EDELSON ASSOCIATES
1109 SPRING STREET, FIFTH FLOOR
SILVER SPRING, MD 20910 TEL: (301) 587-1820

MEP:
ALLEN & SHARIFF ENGINEERING, LLC
7061 DEEPAE DRIVE
COLUMBIA, MD 21045 TEL: (410) 381-7100

Food Service:
FOOD FACILITIES CONCEPTS, INC.
1100 WASHINGTON AVE, SUITE 302
CARNEGIE, PA 15106 TEL: (412) 276-9093

Low Voltage:
CONVERGENT TECHNOLOGIES
DESIGN GROUP, INC.
6501 YORK ROAD
BALTIMORE, MD 21212 TEL: (410) 532-2395

PROJECT TITLE:
**GOODWIN HOUSE
ALEXANDRIA
SMALL HOUSE**

4800 Fillmore Ave. Alexandria, VA 22311

PROJECT No: 47151.00
DRAWING TITLE:

**EXTERIOR
ELEVATIONS**

SCALE: 1/8" = 1'

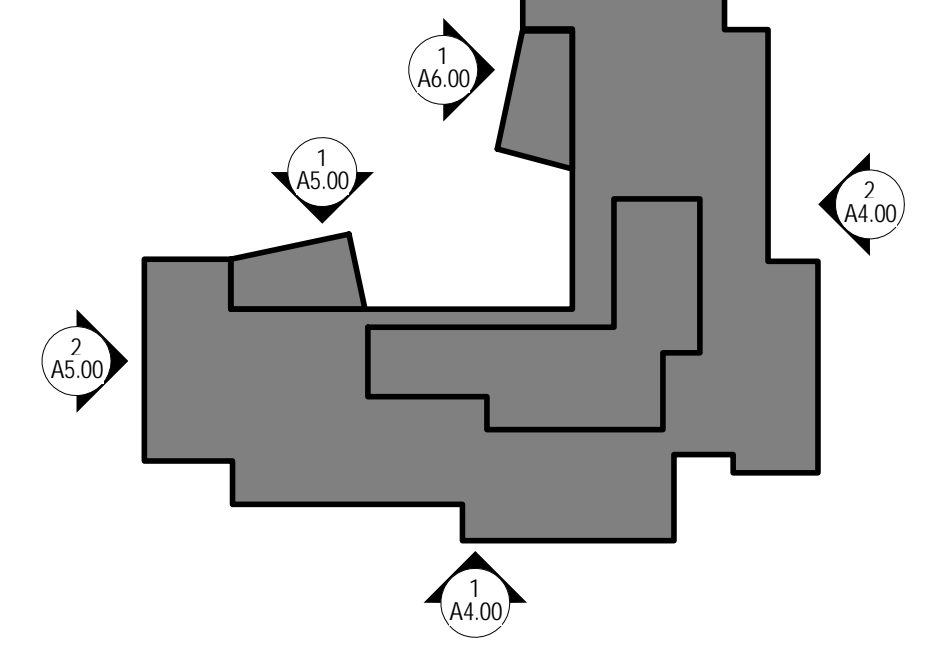
A4.00

PRELIMINARY DEVELOPMENT
SPECIAL USE PERMIT
SEPTEMBER 5, 2014

EXTERIOR MATERIAL KEY

B1	BRICK VENEER COLOR 1, RUNNING BOND	M1	METAL PANEL SYSTEM
B2	BRICK VENEER COLOR 2, RUNNING BOND WITH RECESSED TIE BACK COURSING EVERY 6 COURSES	M2	COMPOSITE METAL CANTILEVERED CORNICE / CANOPY
PC1	12" TALL PRECAST CONCRETE ACCENT BAND	M3	PREFINISHED ALUMINUM COPING SYSTEM
PC2	12" TALL PRECAST WINDOW LINTELS	M4	PRESSED METAL PANEL GLAZED INTO WINDOW SYSTEM
PC3	12" X 24" GROUND FACE CONCRETE BLOCK UNITS	M5	PREFINISHED ALUMINUM SCUPPERS, DOWNSPOUTS AND CONDUCTOR HEADS
RC1	GFRC COLUMN ENCLOSURES	M6	METAL LOUVERED SCREEN WALL
W1	PREFINISHED ALUMINUM WINDOW SYSTEM WITH INTEGRAL SILL	MG1	PAINTED GALVANIZED METAL PIPE RAILING SYSTEM
W2	PREFINISHED ALUMINUM WINDOW SYSTEM. 50% OF GLAZING IS FRITTED.	MG2	PAINTED GALVANIZED PREMANUFACTURED ROOF ACCESS LADDER AND SAFETY CAGE
W4	PREFINISHED ALUMINUM EXTERIOR STOREFRONT SYSTEM	AL	PREFINISHED ARCHITECTURAL LOUVER
LT1	DECORATIVE WALL SCONCE	D1	PREFINISHED ALUMINUM EXTERIOR INSULATED STILE AND RAIL INSULATED GLASS DOOR
		D2	PREFINISHED ALUMINUM EXTERIOR INSULATED FLUSH DOOR

KEY PLAN



2 EAST ELEVATION 01
1/8" = 1'-0"

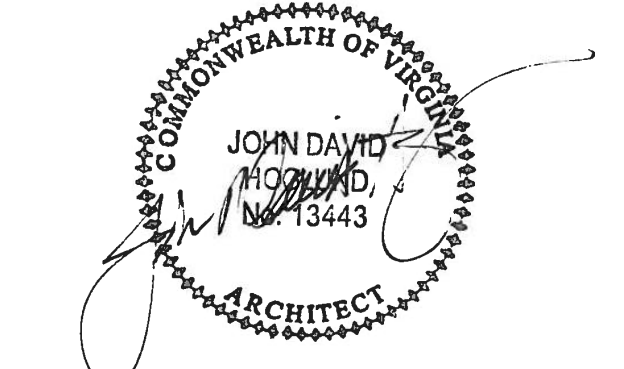


1 SOUTH ELEVATION 01
1/8" = 1'-0"

APPROVED
SPECIAL USE PERMIT NO. _____
DEPARTMENT OF PLANNING & ZONING

DIRECTOR _____ DATE _____
DEPARTMENT OF TRANSPORTATION & ENVIRONMENTAL SERVICES
SITE PLAN NO. _____

DIRECTOR _____ DATE _____
CHAIRMAN, PLANNING COMMISSION _____ DATE _____
DATE RECORDED _____
INSTRUMENT NO. _____ NEED BROW. NO. _____ PAGE NO. _____

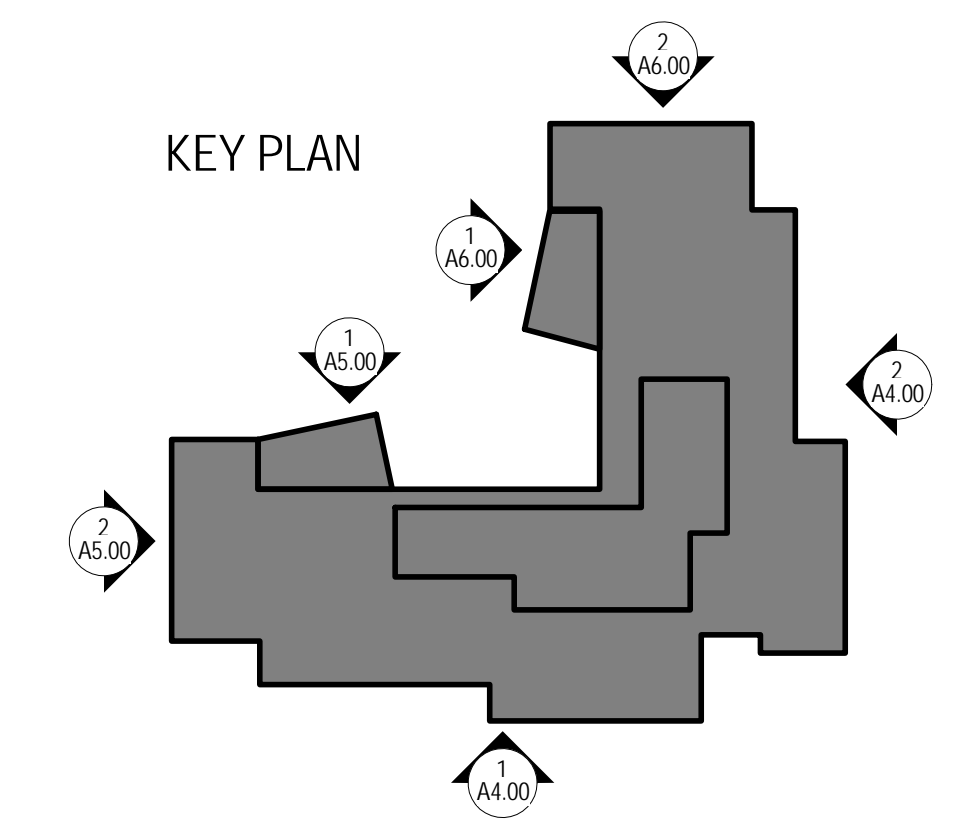


EXTERIOR MATERIAL KEY

B1	BRICK VENEER COLOR 1, RUNNING BOND	M1	METAL PANEL SYSTEM
B2	BRICK VENEER COLOR 2, RUNNING BOND WITH RECESSED TIE BACK COURSING EVERY 6 COURSES	M2	COMPOSITE METAL CANTILEVERED CORNICE / CANOPY
PC1	12" TALL PRECAST CONCRETE ACCENT BAND	M3	PREFINISHED ALUMINUM COPING SYSTEM
PC2	12" TALL PRECAST WINDOW LINTELS	M4	PRESSED METAL PANEL GLAZED INTO WINDOW SYSTEM
PC3	12" X 24" GROUND FACE CONCRETE BLOCK UNITS	M5	PREFINISHED ALUMINUM, SCUPPERS, DOWNSPOUTS AND CONDUCTOR HEADS
RC1	GFRG COLUMN ENCLOSURES	M6	METAL LOUVERED SCREEN WALL
W1	PREFINISHED ALUMINUM WINDOW SYSTEM WITH INTEGRAL SILL	MG1	PAINTED GALVANIZED METAL PIPE RAILING SYSTEM
W2	PREFINISHED ALUMINUM WINDOW SYSTEM, 50% OF GLAZING IS FRITTED.	MG2	PAINTED GALVANIZED PREMANUFACTURED ROOF ACCESS LADDER AND SAFETY CAGE
W4	PREFINISHED ALUMINUM EXTERIOR STOREFRONT SYSTEM	AL	PREFINISHED ARCHITECTURAL LOUVER
LT1	DECORATIVE WALL SCOFFCE	D1	PREFINISHED ALUMINUM EXTERIOR INSULATED STILE AND RAIL INSULATED GLASS DOOR
		D2	PREFINISHED ALUMINUM EXTERIOR INSULATED FLUSH DOOR



2 WEST ELEVATION 01
1/8" = 1'-0"



KEY PLAN



1 COURTYARD SOUTH ELEVATION 01
1/8" = 1'-0"

APPROVED

SPECIAL USE PERMIT NO. _____

DEPARTMENT OF PLANNING & ZONING

DIRECTOR _____ DATE _____

DEPARTMENT OF TRANSPORTATION & ENVIRONMENTAL SERVICES

SITE PLAN NO. _____

DIRECTOR _____ DATE _____

COURTIAL PLANNING COMMISSION _____ DATE _____

DATE RECORDED _____

INSTRUMENT NO. _____ NEED BROW. NO. _____ PAGE NO. _____



Perkins Eastman

1100 LIBERTY AVENUE
PITTSBURGH, PA 15222
T. 412.456.0900
F. 412.456.0906

Owner:
GOODWIN HOUSE INCORPORATED
4800 FILLMORE AVENUE
ALEXANDRIA, VA 22311 TEL: (703) 820-1488

Construction Manager:
ADVANCED PROJECT MANAGEMENT, INC.
4530 WALNEY ROAD, SUITE 202
CHANTILLY, VA 20151 TEL: (703) 263-3100

Civil / Site:
BOWMAN CONSULTING
2121 EISENHOWER AVE, SUITE 302
ALEXANDRIA, VA 22314 TEL: (703) 548-2188

Landscape:
MICHAEL VERGASON
LANDSCAPE ARCHITECTS, LTD.
1102 KING STREET, 2ND FLOOR
ALEXANDRIA, VA 22314 TEL: (703) 836-5557

Structural:
TADJER-COHEN-EDELSON ASSOCIATES
1109 SPRING STREET, FIFTH FLOOR
SILVER SPRING, MD 20910 TEL: (301) 587-1820

MEP:
ALLEN & SHARIFF ENGINEERING, LLC
7061 DEEPAGE DRIVE
COLUMBIA, MD 21045 TEL: (410) 381-7100

Food Service:
FOOD FACILITIES CONCEPTS, INC.
1100 WASHINGTON AVE, SUITE 302
CARNEGIE, PA 15106 TEL: (412) 276-9093

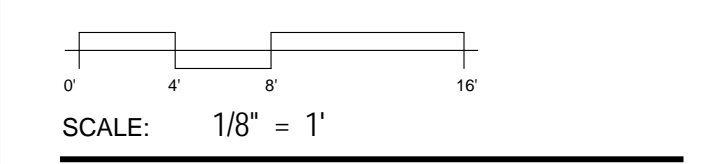
Low Voltage:
CONVERGENT TECHNOLOGIES
DESIGN GROUP, INC.
6501 YORK ROAD
BALTIMORE, MD 21212 TEL: (410) 532-2395

PROJECT TITLE:
**GOODWIN HOUSE
ALEXANDRIA
SMALL HOUSE**

4800 Fillmore Ave. Alexandria, VA 22311

PROJECT No: 47151.00
DRAWING TITLE:

EXTERIOR ELEVATIONS



SCALE: 1/8" = 1'

A5.00

PRELIMINARY DEVELOPMENT
SPECIAL USE PERMIT
SEPTEMBER 5, 2014

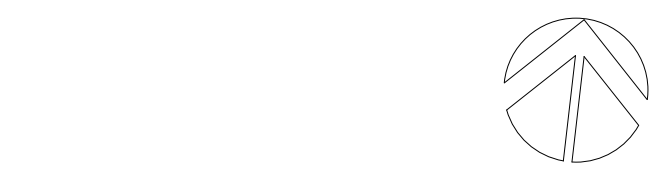
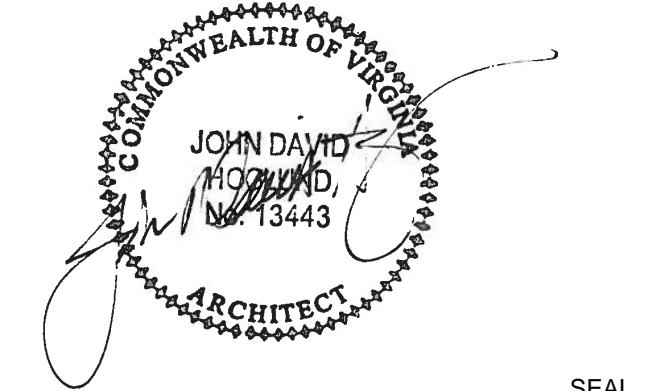
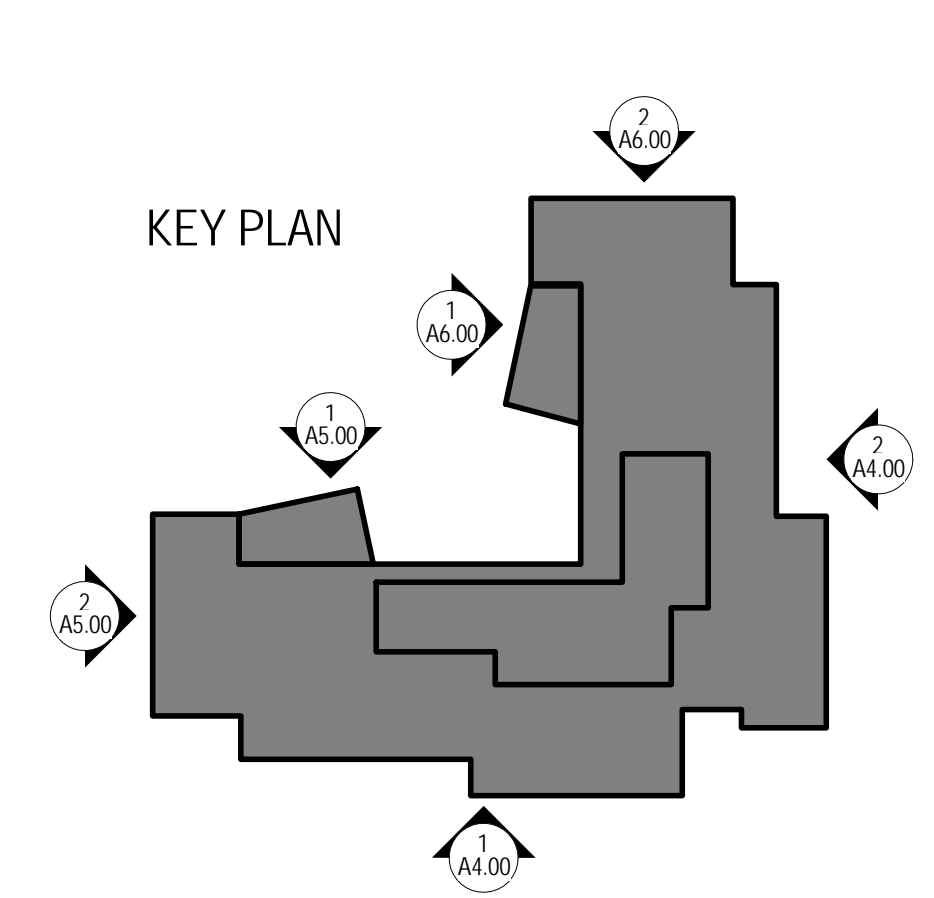


2 NORTH ELEVATION 01
1/8" = 1'-0"



1 COURTYARD EAST ELEVATION 01
1/8" = 1'-0"

EXTERIOR MATERIAL KEY			
B1	BRICK VENEER COLOR 1, RUNNING BOND	M1	METAL PANEL SYSTEM
B2	BRICK VENEER COLOR 2, RUNNING BOND WITH RECESSED TIE BACK COURSING EVERY 6 COURSES	M2	COMPOSITE METAL CANTILEVERED CORNICE / CANOPY
PC1	12" TALL PRECAST CONCRETE ACCENT BAND	M3	PREFINISHED ALUMINUM COPING SYSTEM
PC2	12" TALL PRECAST WINDOW LINTELS	M4	PRESSED METAL PANEL, GLAZED INTO WINDOW SYSTEM
PC3	12" X 24" GROUND FACE CONCRETE BLOCK UNITS	M5	PREFINISHED ALUMINUM, SCUPPERS, DOWNSPOUTS AND CONDUCTOR HEADS
RC1	GFRG COLUMN ENCLOSURES	M6	METAL LOUVERED SCREEN WALL
W1	PREFINISHED ALUMINUM WINDOW SYSTEM WITH INTEGRAL SILL	MG1	PAINTED GALVANIZED METAL PIPE RAILING SYSTEM
W2	PREFINISHED ALUMINUM WINDOW SYSTEM. 50% OF GLAZING IS FRITTED.	MG2	PAINTED GALVANIZED PREMANUFACTURED ROOF ACCESS LADDER AND SAFETY CAGE
W4	PREFINISHED ALUMINUM EXTERIOR STOREFRONT SYSTEM	AL	PREFINISHED ARCHITECTURAL LOUVER
LT1	DECORATIVE WALL SCIENCE	D1	PREFINISHED ALUMINUM EXTERIOR INSULATED STILE AND RAIL INSULATED GLASS DOOR
		D2	PREFINISHED ALUMINUM EXTERIOR INSULATED FLUSH DOOR



Perkins Eastman
1100 LIBERTY AVENUE
PITTSBURGH, PA 15222
T. 412.456.0900
F. 412.456.0906

Owner:
GOODWIN HOUSE INCORPORATED
4800 FILLMORE AVENUE
ALEXANDRIA, VA 22311 TEL: (703) 820-1488

Construction Manager:
ADVANCED PROJECT MANAGEMENT, INC.
4530 WALNEY ROAD, SUITE 202
CHANTILLY, VA 20151 TEL: (703) 263-3100

Civil / Site:
BOWMAN CONSULTING
2121 EISENHOWER AVE, SUITE 302
ALEXANDRIA, VA 22314 TEL: (703) 548-2188

Landscape:
MICHAEL VERGASON
LANDSCAPE ARCHITECTS, LTD.
1102 KING STREET, 2ND FLOOR
ALEXANDRIA, VA 22314 TEL: (703) 836-5557

Structural:
TADJER-COHEN-EDELSON ASSOCIATES
1109 SPRING STREET, FIFTH FLOOR
SILVER SPRING, MD 20910 TEL: (301) 587-1820

MEP:
ALLEN & SHARIFF ENGINEERING, LLC
7061 DEEPAE DRIVE
COLUMBIA, MD 21045 TEL: (410) 381-7100

Food Service:
FOOD FACILITIES CONCEPTS, INC.
1100 WASHINGTON AVE, SUITE 302
CARNEGIE, PA 15106 TEL: (412) 276-9093

Low Voltage:
CONVERGENT TECHNOLOGIES
DESIGN GROUP, INC.
6501 YORK ROAD
BALTIMORE, MD 21212 TEL: (410) 532-2395

PROJECT TITLE:
**GOODWIN HOUSE
ALEXANDRIA
SMALL HOUSE**
4800 Fillmore Ave. Alexandria, VA 22311

PROJECT No: 47151.00

DRAWING TITLE:
**EXTERIOR
ELEVATIONS**

SCALE: 1/8" = 1'

A6.00

PRELIMINARY DEVELOPMENT
SPECIAL USE PERMIT
SEPTEMBER 5, 2014

APPROVED	
SPECIAL USE PERMIT NO. _____	
DEPARTMENT OF PLANNING & ZONING	
_____ DIRECTOR	_____ DATE
DEPARTMENT OF TRANSPORTATION & ENVIRONMENTAL SERVICES	
SITE PLAN NO. _____	
_____ DIRECTOR	_____ DATE
CHAIRMAN, PLANNING COMMISSION	
_____ DATE RECORDED	_____ DATE
INSTRUMENT NO. _____	PAGE NO. _____