

CARLYLE SOUTH RESIDENTIAL

Alexandria | Virginia

PREPARED FOR:

Hines  **JM-ZELL**

DRB Design Presentation

PREPARED BY:

ARQUITECTONICA

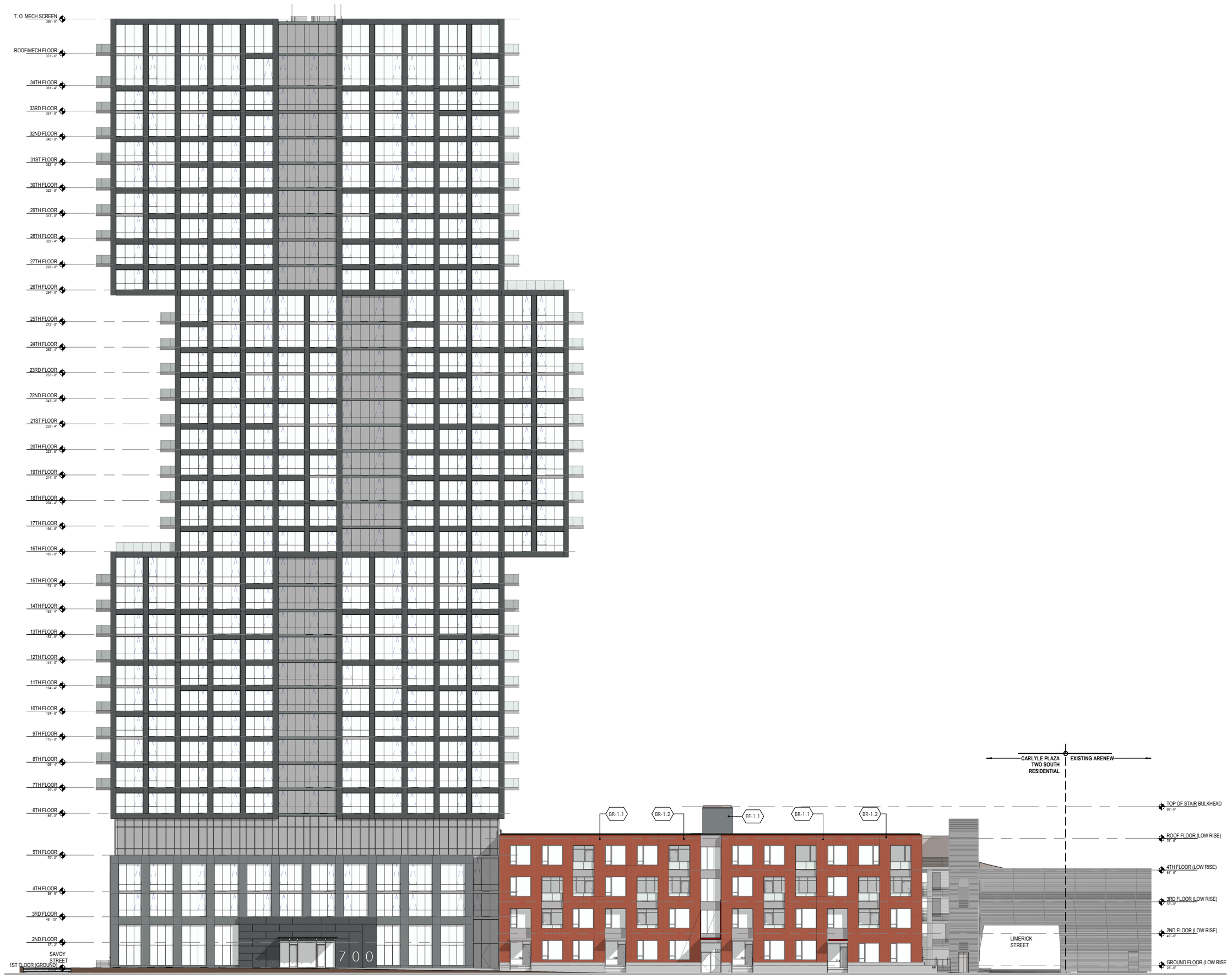
O C U L U S

2018-03-15

CARLYLE SOUTH

Alexandria | Virginia

LINER BUILDING



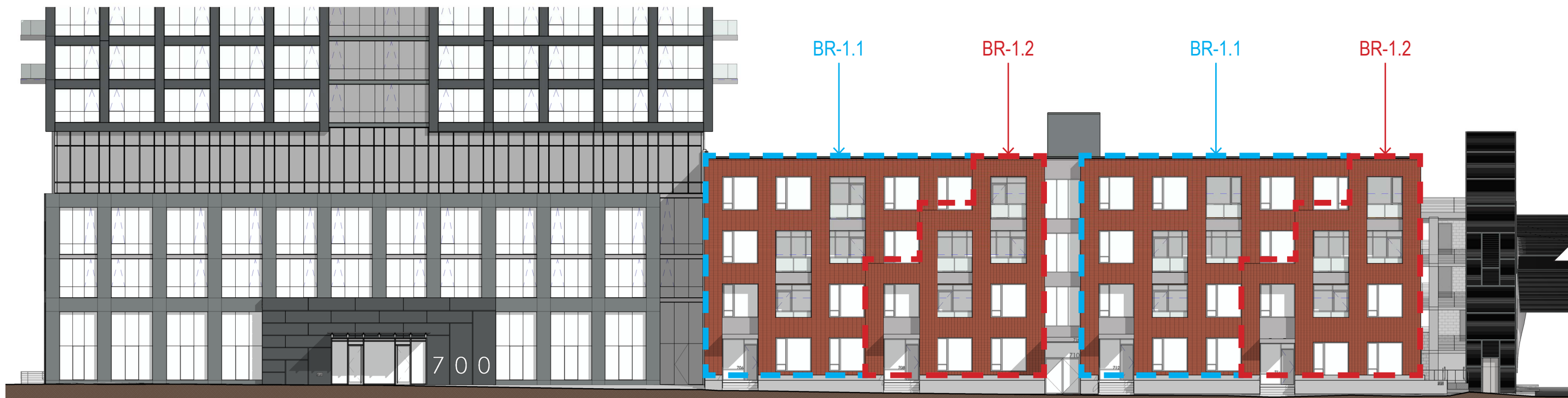
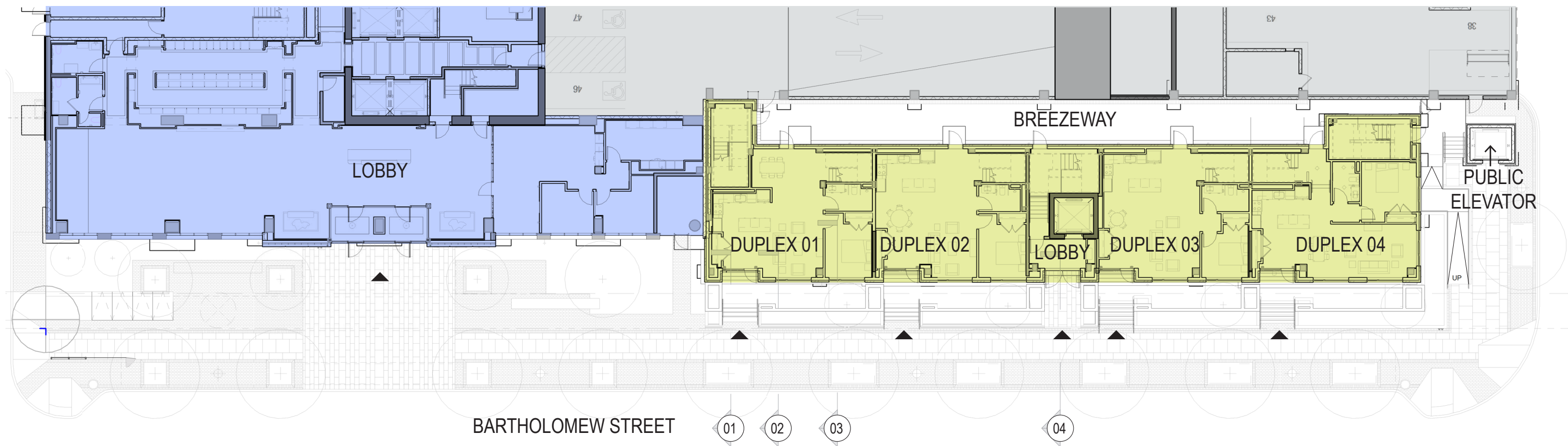
ARQUITECTONICA

PREPARED FOR:
Hines 

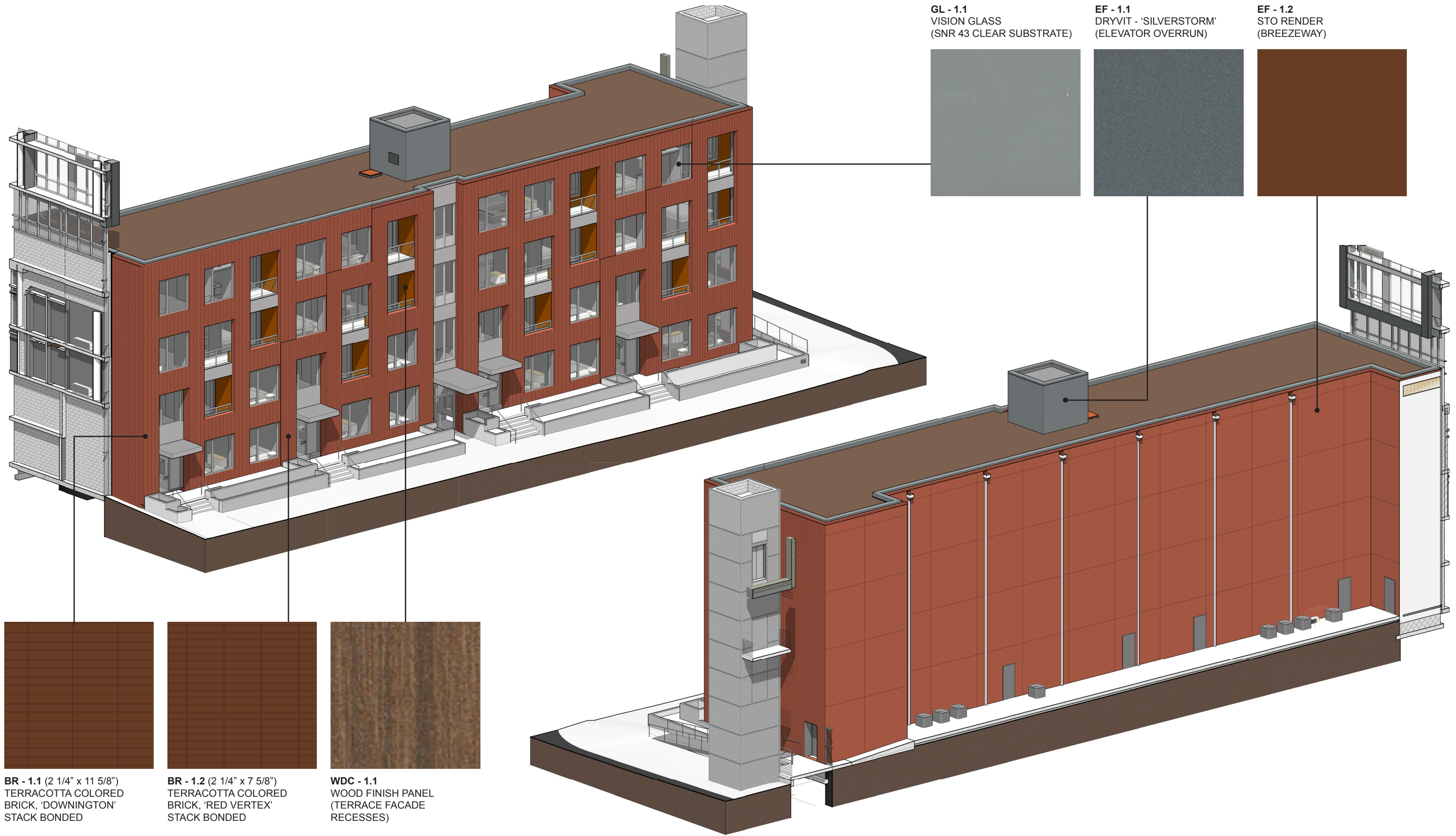
PROJECT:
CARLYLE SOUTH
 ALEXANDRIA, VIRGINIA

DRAWING:
OVERALL - WEST ELEVATION

2018-03-15



ARQUITECTONICA



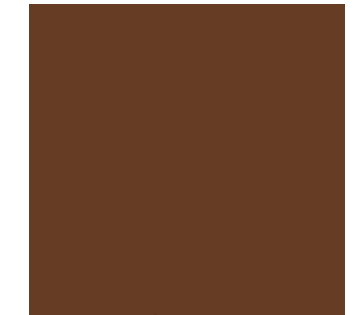
GL - 1.1
VISION GLASS
(SNR 43 CLEAR SUBSTRATE)



EF - 1.1
DRYVIT - 'SILVERSTORM'
(ELEVATOR OVERRUN)



EF - 1.2
STO RENDER
(BREEZEWAY)



BR - 1.1 (2 1/4" x 11 5/8")
TERRACOTTA COLORED
BRICK, 'DOWNINGTON'
STACK BONDED

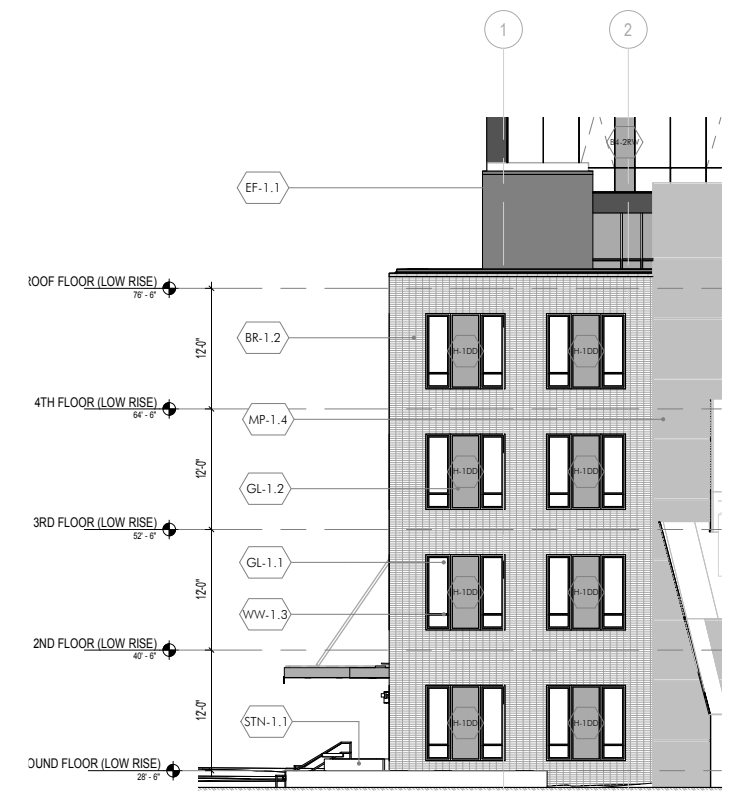
BR - 1.2 (2 1/4" x 7 5/8")
TERRACOTTA COLORED
BRICK, 'RED VERTEX'
STACK BONDED

WDC - 1.1
WOOD FINISH PANEL
(TERRACE FACADE
RECESSES)

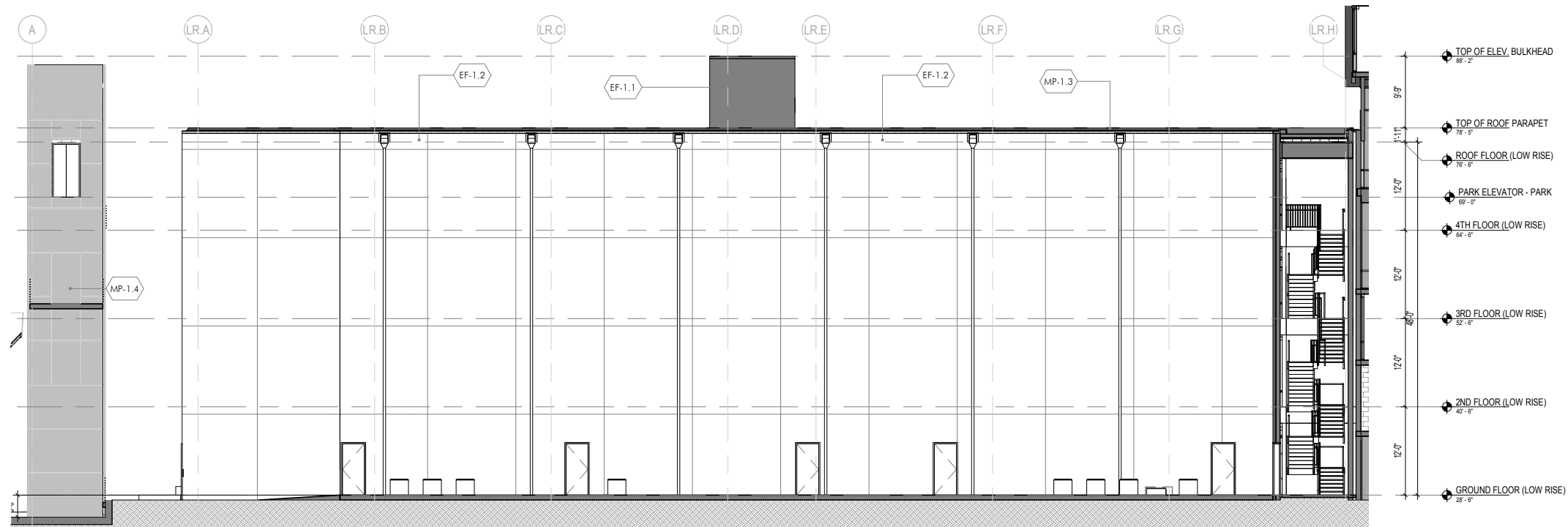
ARQUITECTONICA



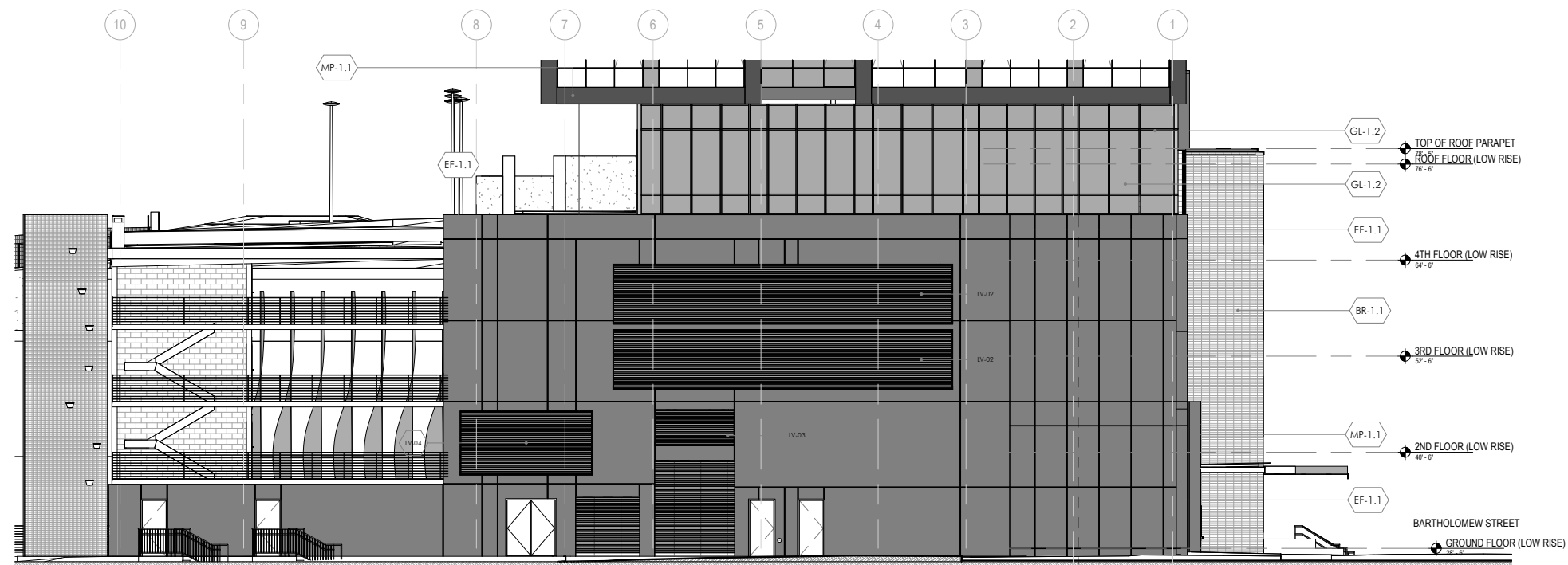
WEST ELEVATION



SOUTH ELEVATION



EAST ELEVATION - BREEZEWAY



NORTH ELEVATION (SHOWN WITHOUT SCRIM COVERING)

ARQUITECTONICA

PREPARED FOR:



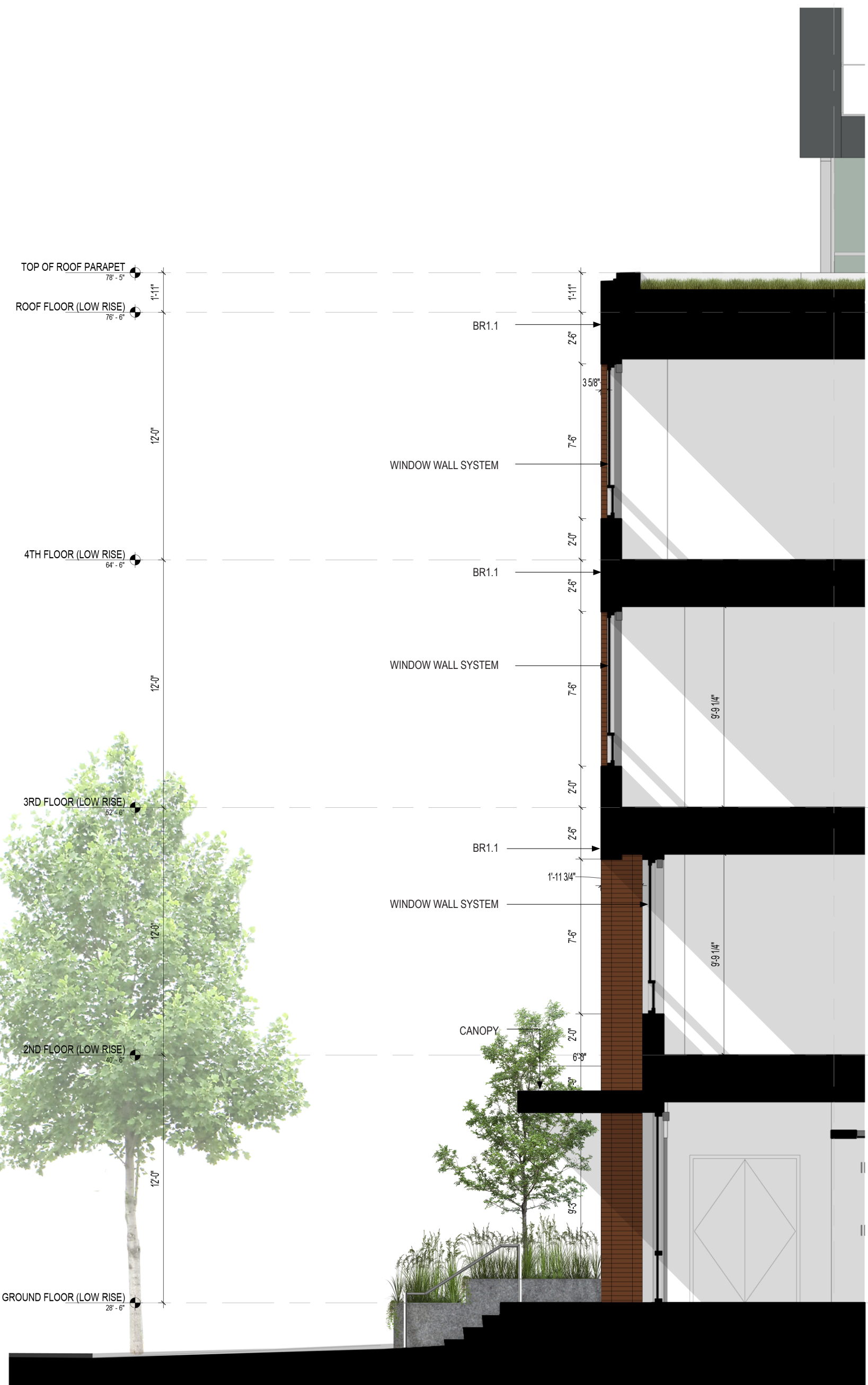
PROJECT:

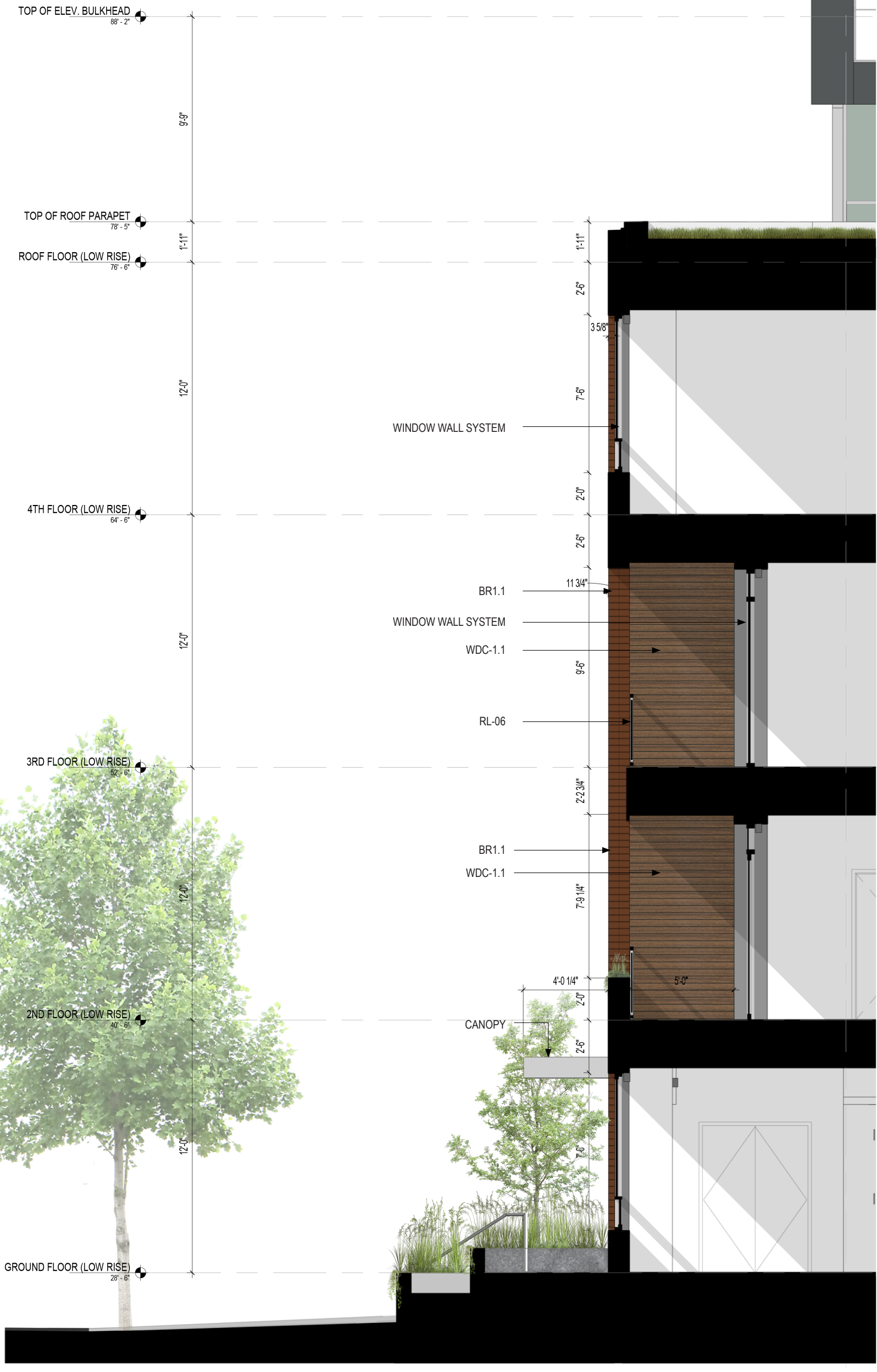
CARLYLE SOUTH
ALEXANDRIA, VIRGINIA

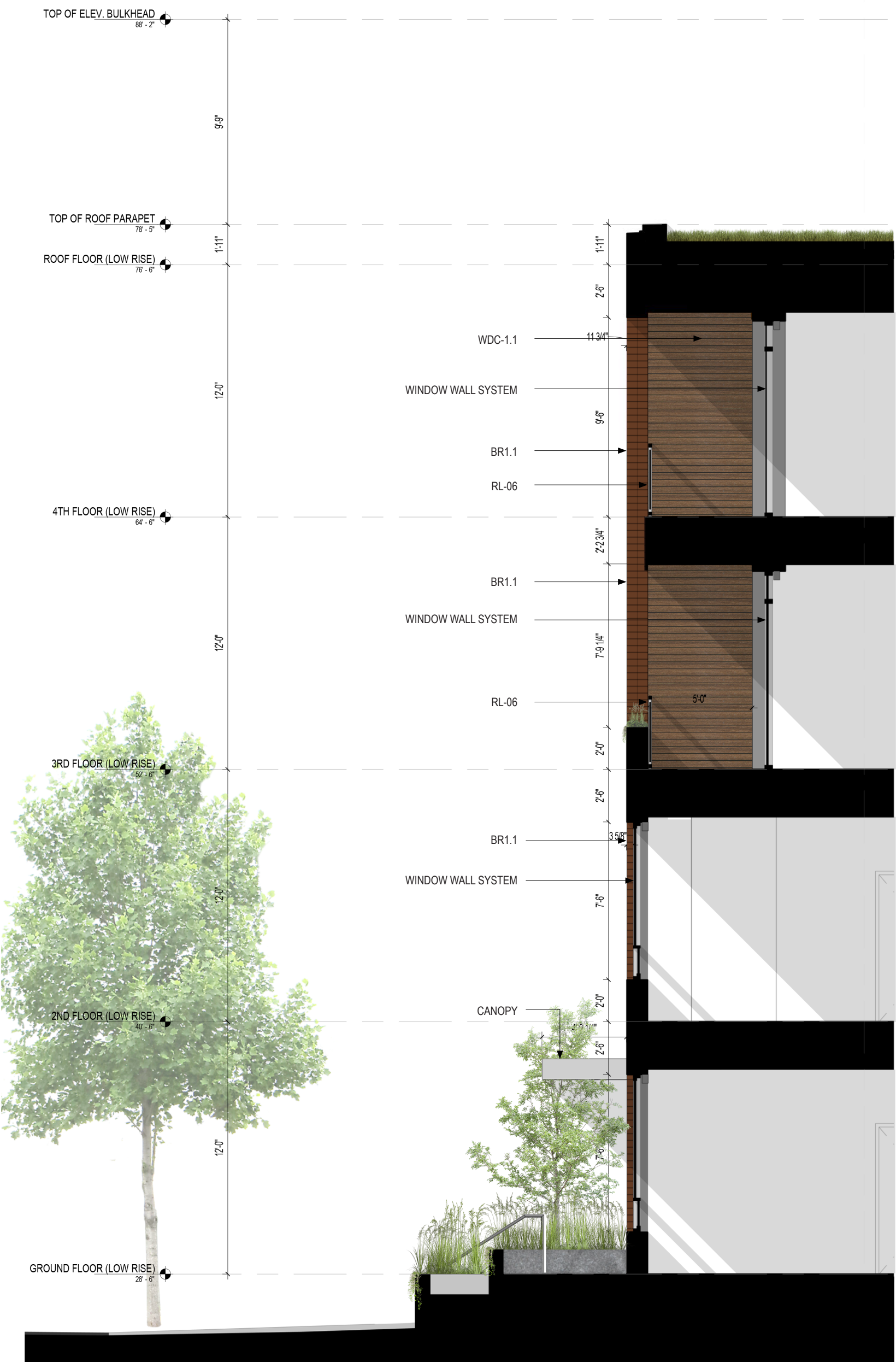
DRAWING:

LINER BUILDING - EAST & NORTH ELEVATIONS

2018-03-15







PREPARED FOR:

Hines **JM-ZELL**

PROJECT:

CARLYLE SOUTH
ALEXANDRIA, VIRGINIA

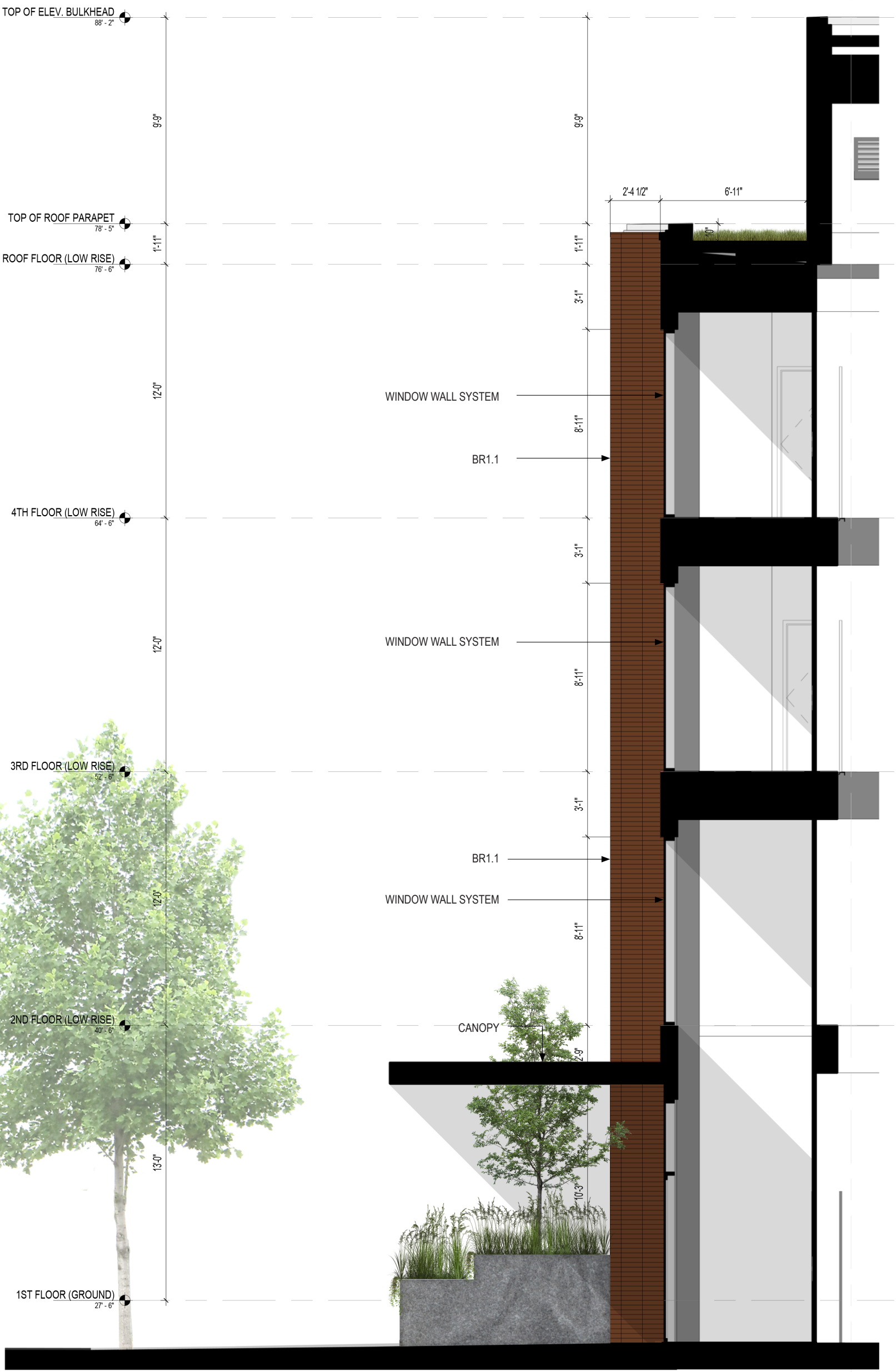
DRAWING:

SECTION 03 - DUPLEX BALCONY 2

ARQUITTECTONICA

2018-03-15

No copies, transmission, reproduction or electronic manipulation of any portion of these drawings in whole or in part are to be made without the express written permission of ARQUITTECTONICA International. All designs in these drawings are the property of ARQUITTECTONICA International. All copyrights reserved (c) 2018



PREPARED FOR:

Hines **JM-ZELL**

PROJECT:

CARLYLE SOUTH
ALEXANDRIA, VIRGINIA

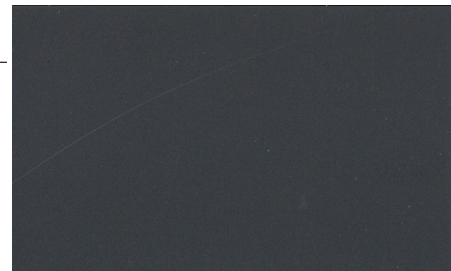
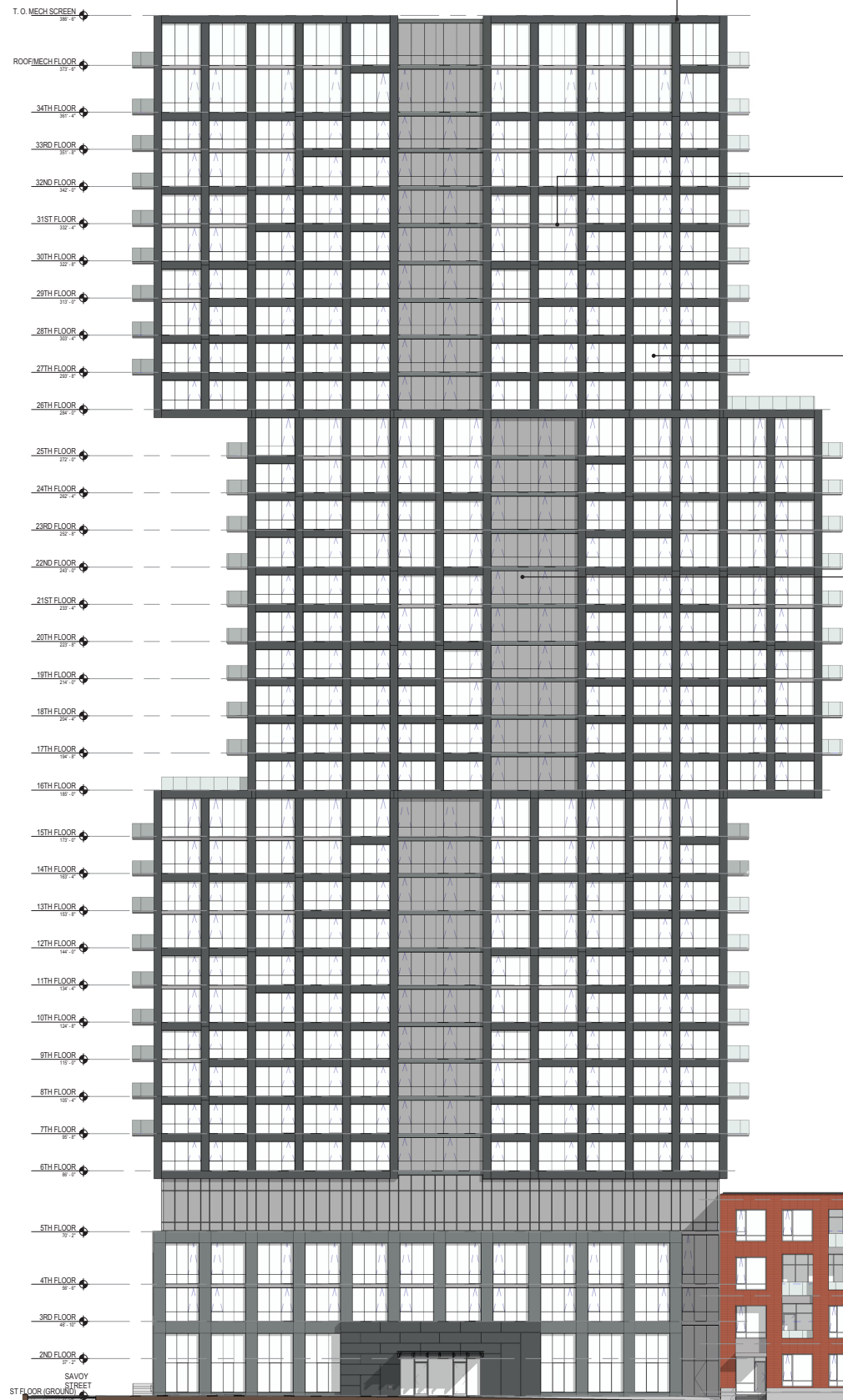
DRAWING:

SECTION 04 - LOBBY ENTRANCE

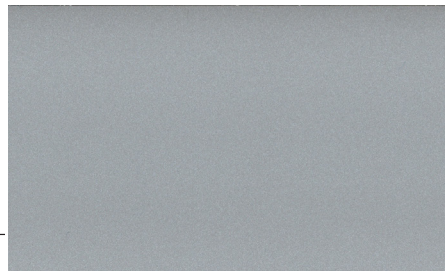
ARQUITECTONICA

2018-03-15

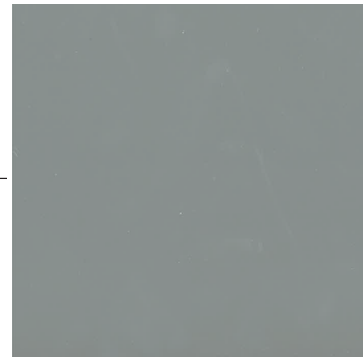
No copies, transmission, reproduction or electronic manipulation of any portion of these drawings in whole or in part are to be made without the express written permission of ARQUITECTONICA International. All designs in these drawings are the property of ARQUITECTONICA International. All copyrights reserved (c) 2018



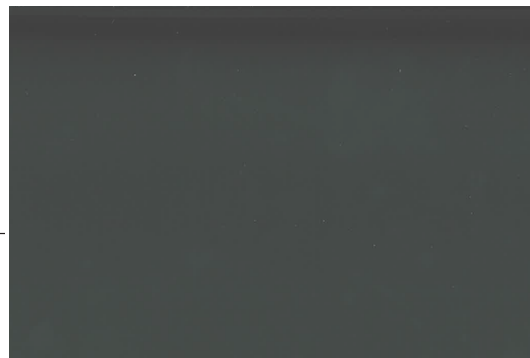
MP - 1.1
METAL PANEL
CHARCOAL



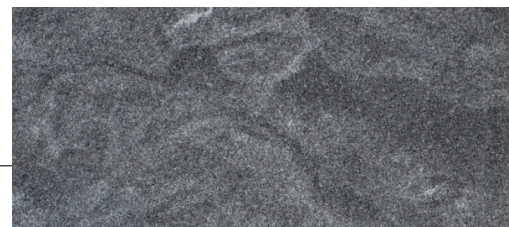
MP - 1.2
METAL PANEL
SILVERSMITH



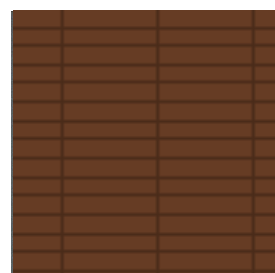
GL - 1.1
VISION GLASS
SNR 43 CLEAR SUBSTRATE



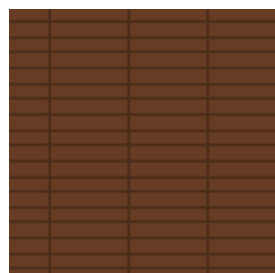
GL - 1.2
VISION GLASS
SOLARBAN 60 - SOLARGRAY



STN - 1.1
BASE STONE
GRANITE



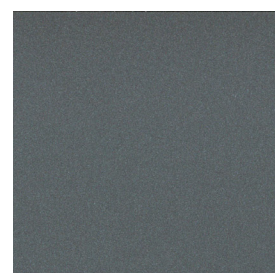
BR - 1.1 (2 1/4" x 11 5/8")
TERRACOTTA COLORED
BRICK, 'DOWNINGTON'
STACK BONDED



BR - 1.2 (2 1/4" x 7 5/8")
TERRACOTTA COLORED BRICK
'RED VERTEX,' STACK BONDED



EF - 1.1
EIFS DRYVIT
SILVERSTORM



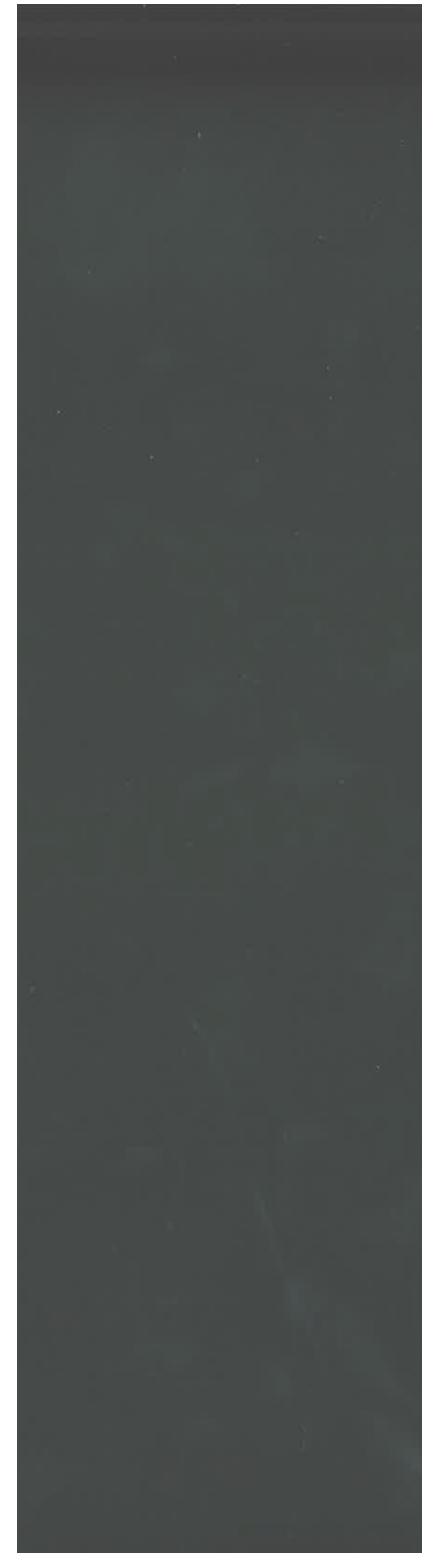
MP - 1.3
METAL PANEL
SILVERSTORM



WEST ELVATION

NORTH ELEVATION

ARQUITECTONICA



MP - 1.1
"CHARCOAL"
(TOWER METAL
PANEL FINISH)

MP - 1.2
"SILVERSMITH"
(TOWER METAL
PANEL FINISH)

MP - 1.3
"SILVERSTORM"
(TOWER METAL
PANEL FINISH)

STN - 1.1
STONE
(GROUND FLOOR
LANDSCAPE AREAS)

GL - 1.1
VISION GLASS
(SNR 43 CLEAR SUBSTRATE)

GL - 1.2
VISION GLASS
(SOLARBAN 60 - SOLARGRAY)

EF - 1.1
DRYVIT - 'SILVERSTORM'
(PODIUM - MECHANICAL EIFS)

NOTE:

- 1. MATERIAL IMAGES ARE PROVIDED TO DESCRIBE GENERAL DESIGN INTENT ONLY
- 2. THE APPEARANCE OF MATERIAL IMAGES WILL VARY WHEN DISPLAYED ON OR PRINTED BY DIFFERENT DEVICES
- 3. PRELIMINARY MATERIAL SELECTIONS ARE SUBJECT TO CHANGE DUE TO ONGOING PERFORMANCE CRITERIA EVALUATION, BUILDING SYSTEMS COORDINATION, CODE COMPLIANCE REVIEW, ETC.

ARQUITECTONICA

PREPARED FOR:



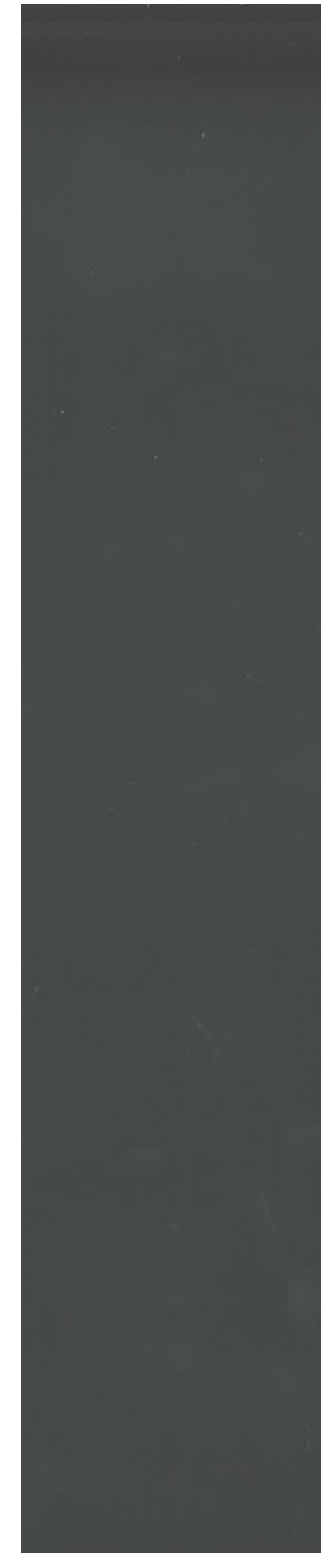
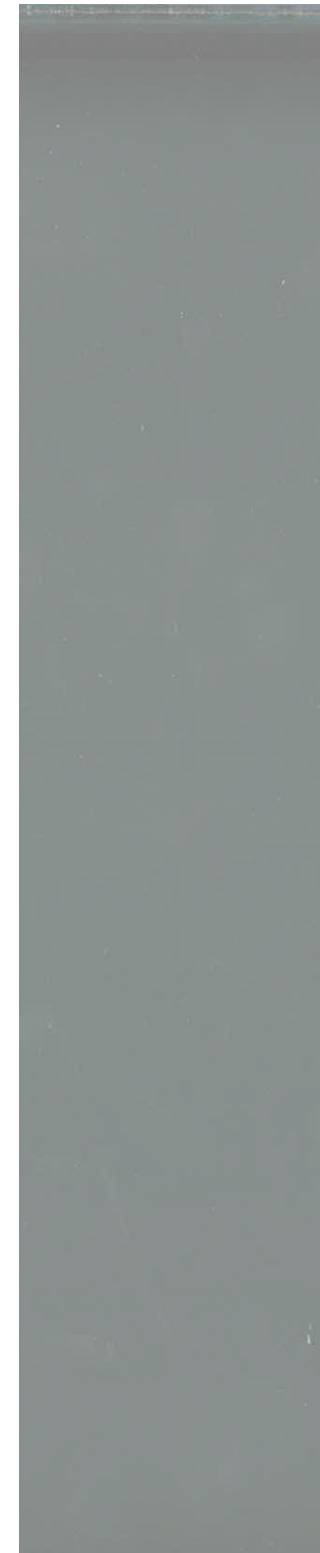
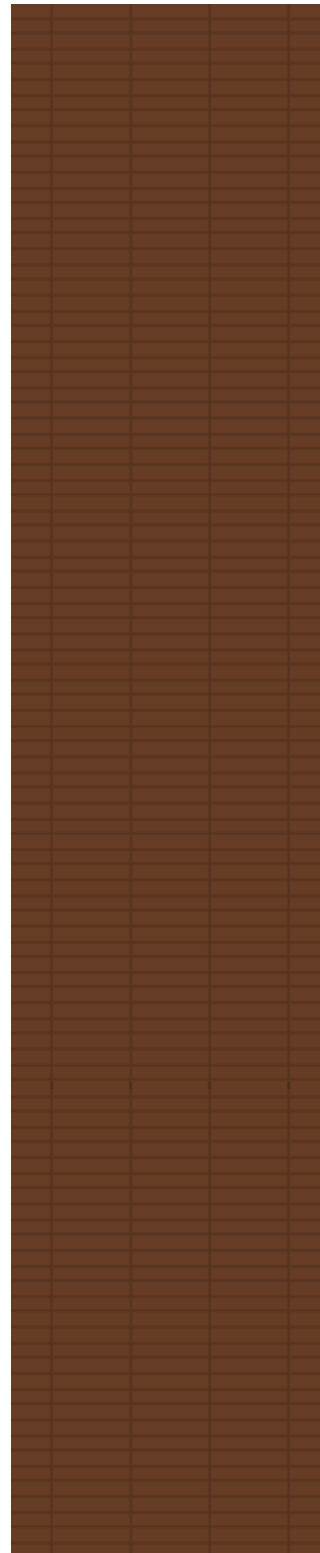
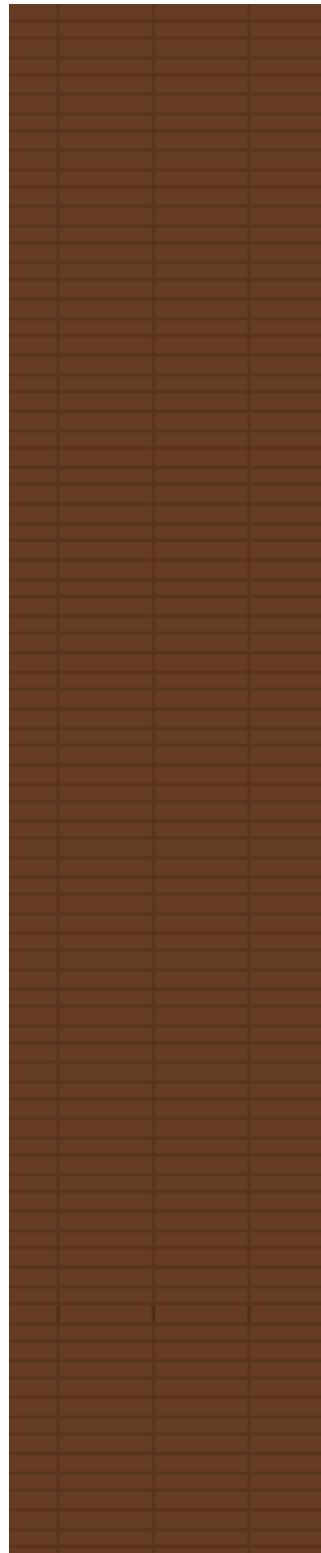
PROJECT:

CARLYLE SOUTH
ALEXANDRIA, VIRGINIA

DRAWING:

TOWER - MATERIAL PALETTE

2018-03-15



BR - 1.1 (2 1/4" x 11 5/8")
TERRACOTTA COLORED
BRICK, 'DOWNINGTON'
STACK BONDED

BR - 1.2 (2 1/4" x 7 5/8")
TERRACOTTA COLORED
BRICK, 'RED VERTEX'
STACK BONDED

WDC - 1.1
WOOD FINISH PANEL
(TERRACE FACADE
RECESSES)

STN - 1.1
STONE
(GROUND FLOOR
LANDSCAPE AREAS)

GL - 1.1
VISION GLASS
(SNR 43 CLEAR SUBSTRATE)

GL - 1.2
VISION GLASS
(SOLARBAN 60 - SOLARGRAY)

MP - 1.2
"SILVERSMITH"
(TERRACE SLAB EDGES)

EF - 1.1
DRYVIT - 'SILVERSTORM'
(ELEVATOR OVERRUN)

EF - 1.2
STO RENDER
(BREEZEWAY)

NOTE:

1. MATERIAL IMAGES ARE PROVIDED TO DESCRIBE GENERAL DESIGN INTENT ONLY
2. THE APPEARANCE OF MATERIAL IMAGES WILL VARY WHEN DISPLAYED ON OR PRINTED BY DIFFERENT DEVICES
3. PRELIMINARY MATERIAL SELECTIONS ARE SUBJECT TO CHANGE DUE TO ONGOING PERFORMANCE CRITERIA EVALUATION, BUILDING SYSTEMS COORDINATION, CODE COMPLIANCE REVIEW, ETC.

ARQUITECTONICA

PREPARED FOR:



PROJECT:

CARLYLE SOUTH
ALEXANDRIA, VIRGINIA

DRAWING:

LINER BUILDING - MATERIAL PALETTE

2018-03-15



ARQUITECTONICA

PREPARED FOR:

Hines  **JM·ZELL**

PROJECT:

**CARLYLE SOUTH
ALEXANDRIA, VIRGINIA**

DRAWING:

TOWER ENTRY

2018-03-15



ARQUITECTONICA

PREPARED FOR:

Hines  **JM·ZELL**

PROJECT:

CARLYLE SOUTH
ALEXANDRIA, VIRGINIA

DRAWING:

VIEW DOWN BARTHOLOMEW ST.

2018-03-15



ARQUITECTONICA

PREPARED FOR:

Hines  **JM·ZELL**

PROJECT:

CARLYLE SOUTH
ALEXANDRIA, VIRGINIA

DRAWING:

VIEW LOOKING NORTH EAST

2018-03-15



OCULUS **ARQUITECTONICA**

PREPARED FOR: PROJECT: PAGE NO. DRAWING:

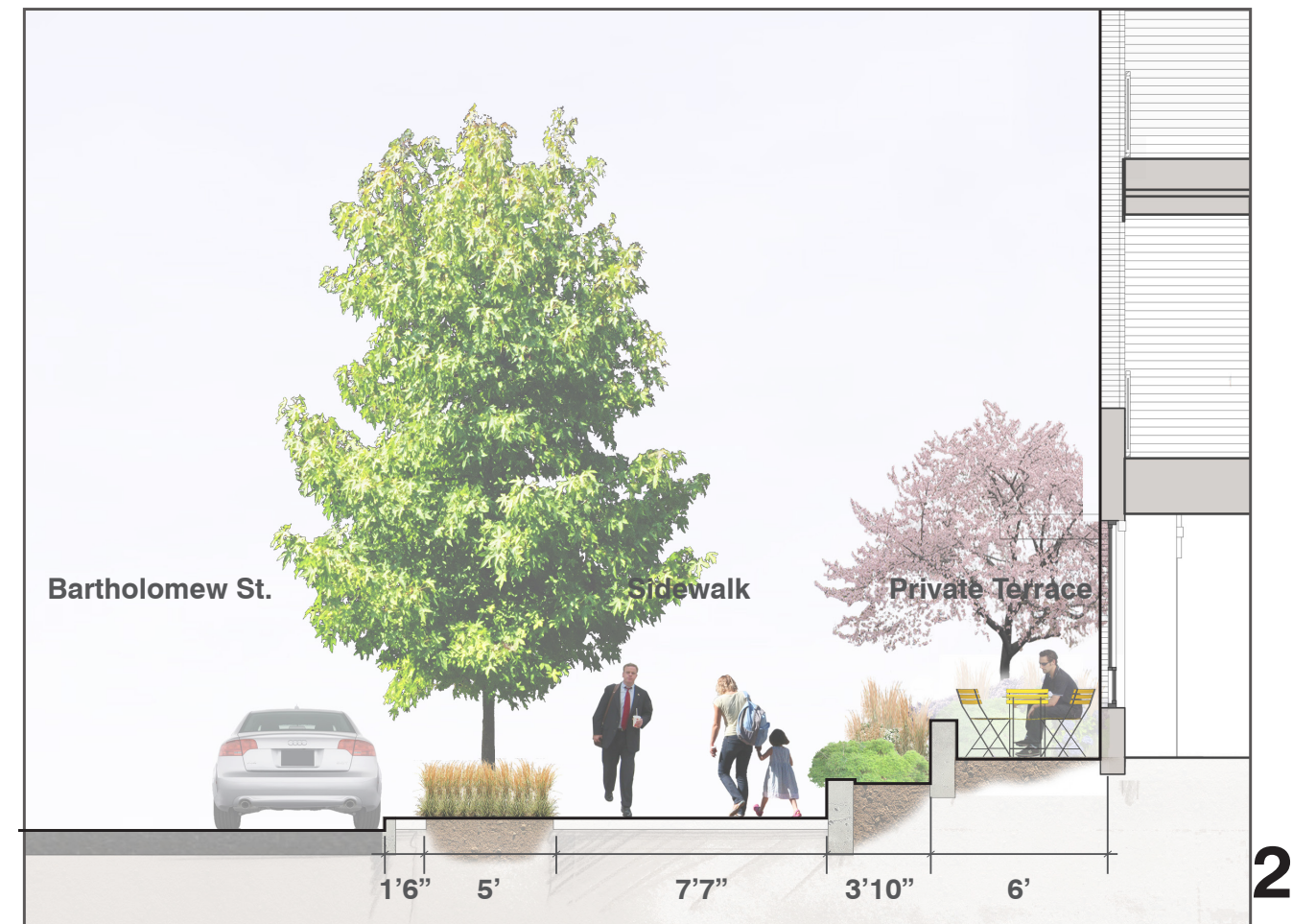
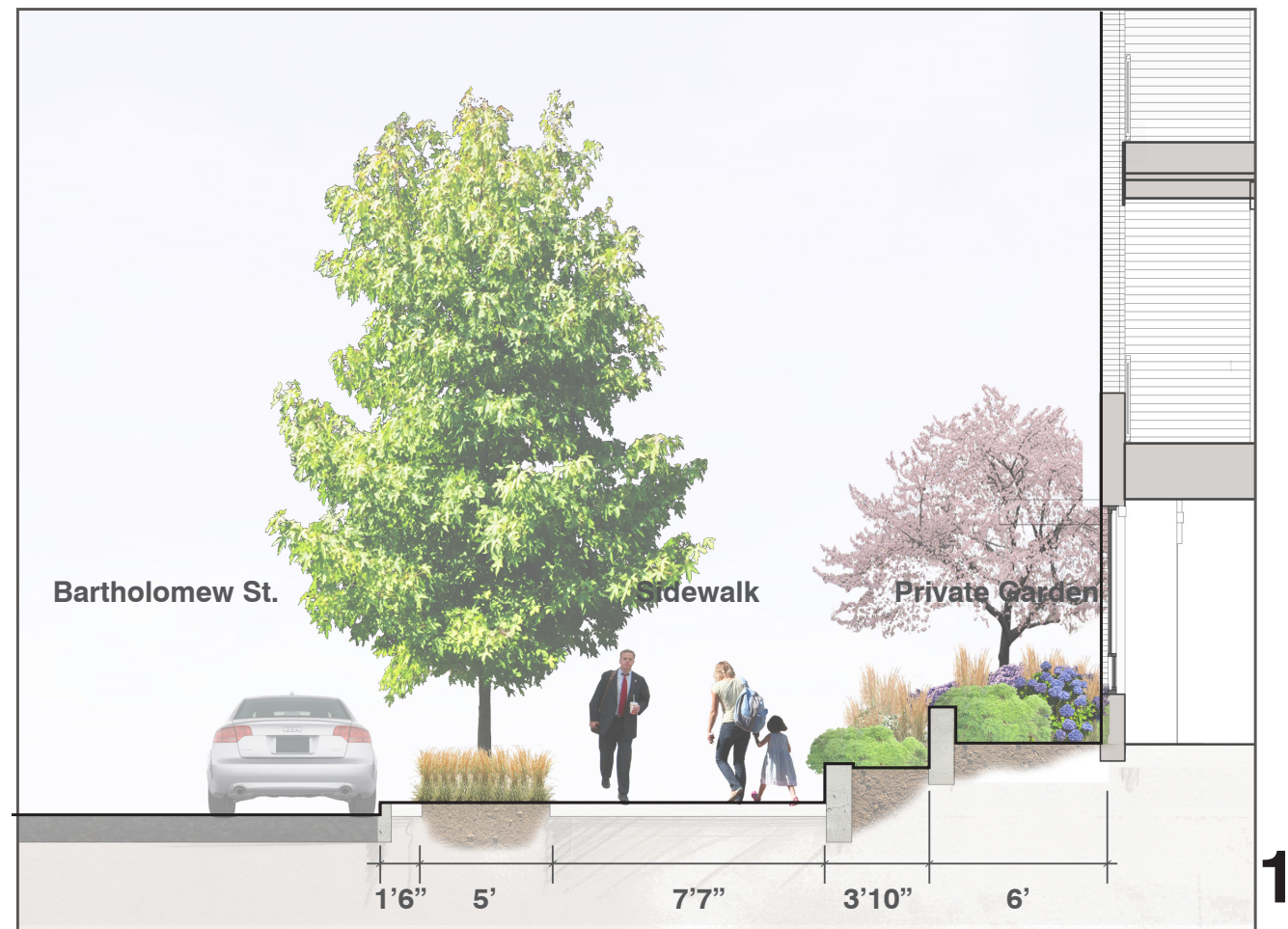
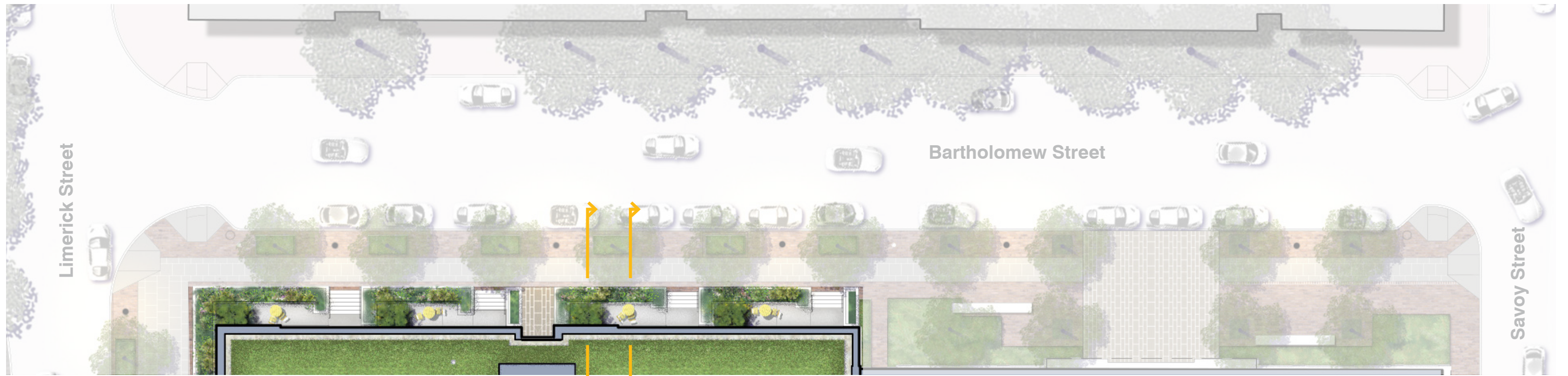


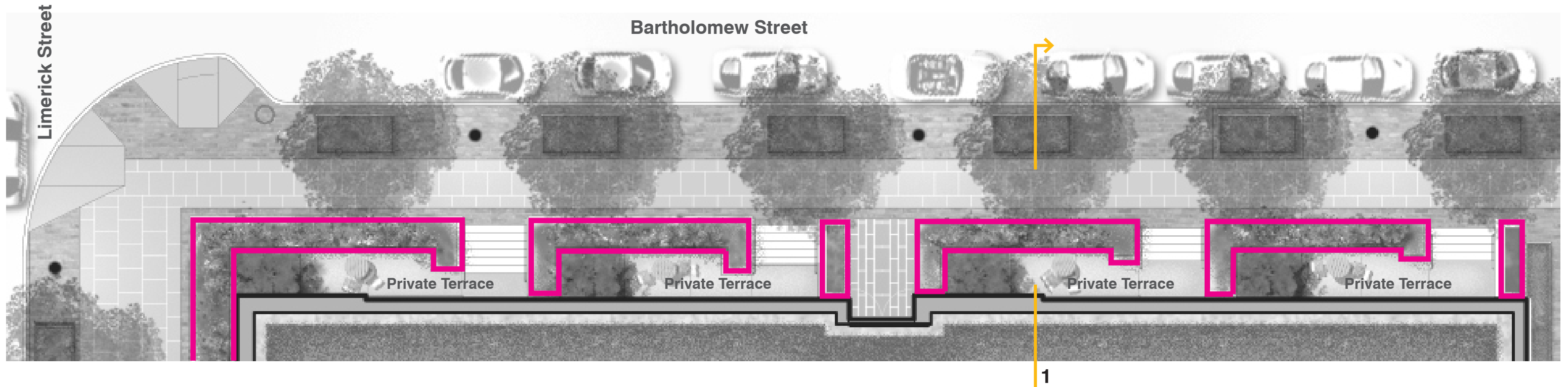
CARLYLE SOUTH
ALEXANDRIA, VIRGINIA **Interim Landscape - Eisenhower Circle**

SCALE: NTS

DATE: 2017-08-21

NO COPIES, TRANSMISSION, REPRODUCTIONS OR ELECTRONIC MANIPULATION OF ANY PORTION OF THESE DRAWINGS IN WHOLE OR IN PART ARE TO BE MADE WITHOUT THE EXPRESS WRITTEN PERMISSION OF ARQUITECTONICA INTERNATIONAL. ALL DESIGNS INDICATED IN THESE DRAWINGS ARE PROPERTY OF ARQUITECTONICA INTERNATIONAL. ALL COPYRIGHTS RESERVED (C) 2016.

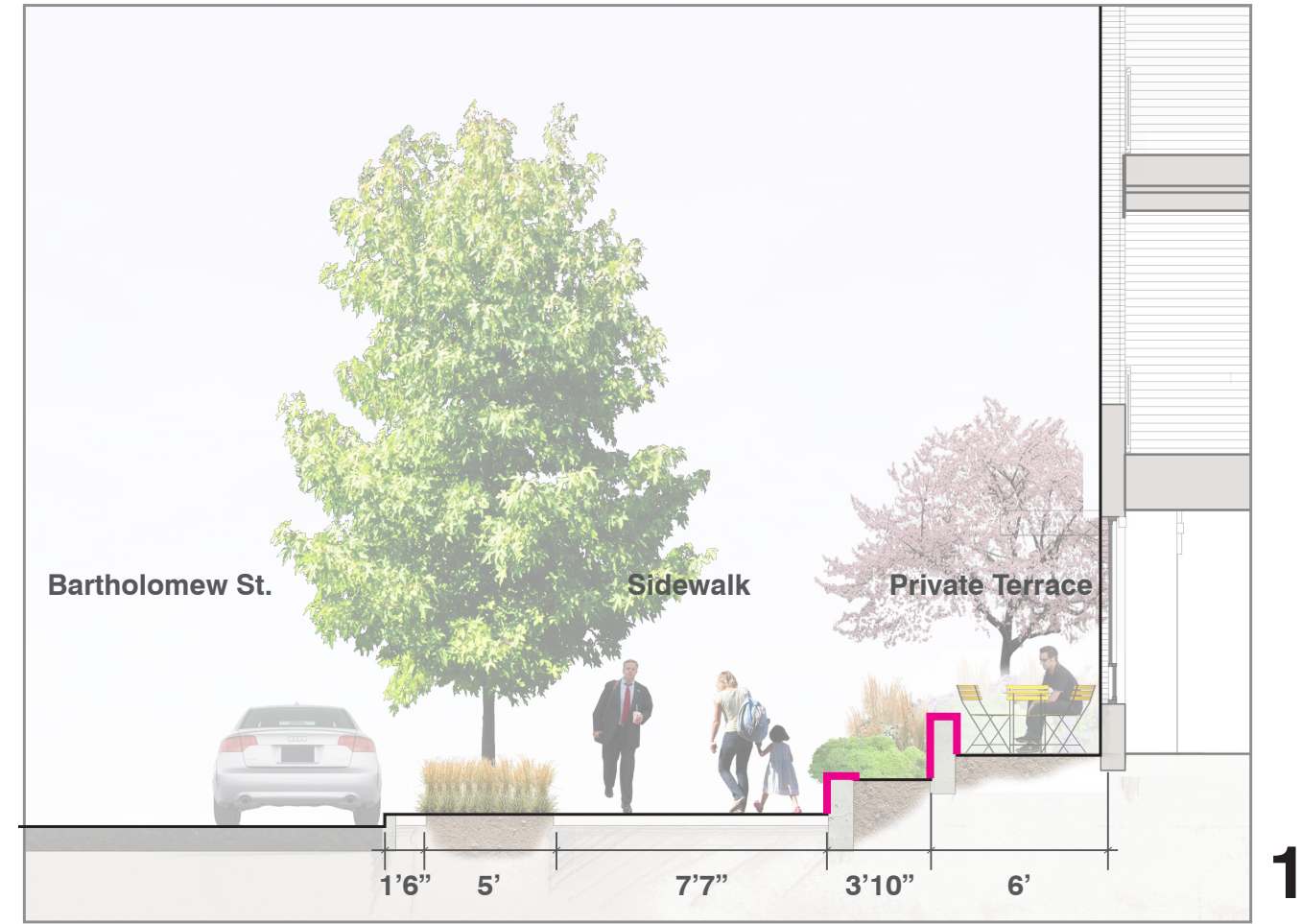
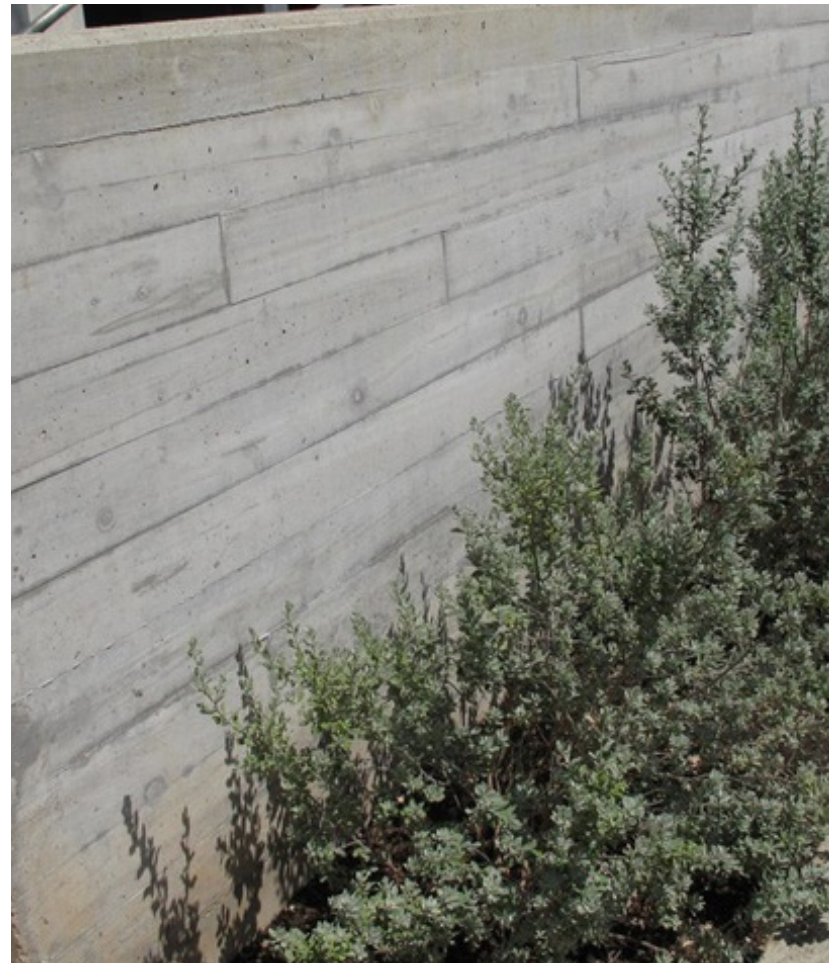




Private Terrace and Stairs - Poured concrete w/ saw-cut joints, med gray



Planter Walls - Poured concrete w/board finish, light gray



OCULUS **ARQUITECTONICA**

Liner Building

Private Gardens

- Intimate
- Complex composition
- Seasonal color
- "Cottage Garden"

Roof Garden

- 'Wind-Swept Landscape'

Primary Plants

Street Tree:

Tilia cordata

Private Garden Trees:

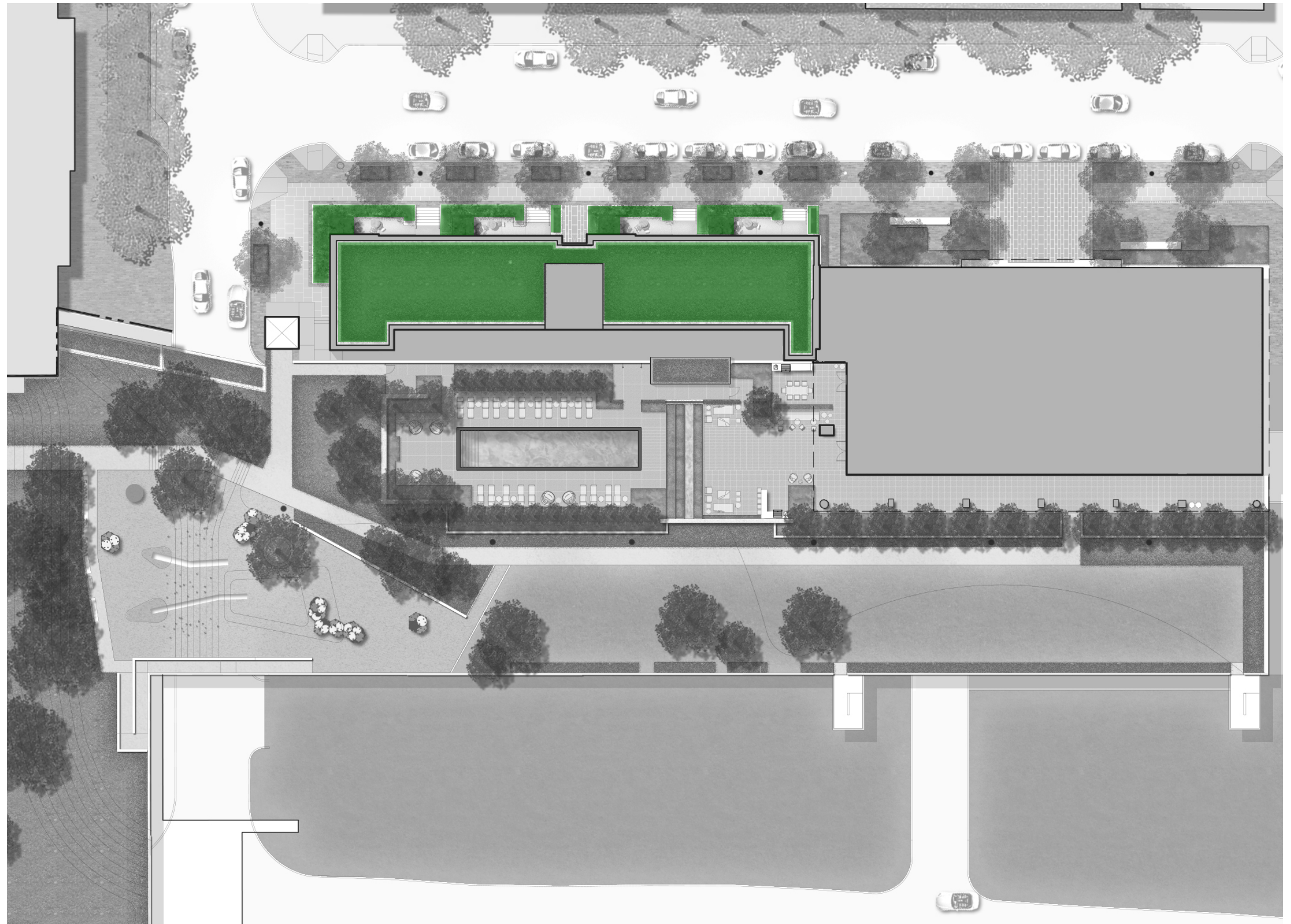
Amelanchier x grandiflora 'Autumn
Brilliance'
Cercis canadensis

Private Garden:

Ajuga reptans 'Burgundy Glow'
Cotoneaster salicifolius 'Repens'
Liriope spicata
Nandina domestica 'Gulf Stream'
Nandina domestica 'Moon Bay'
Nandina domestica 'Sienna
Sunrise'
Perennial mix for each of the four
gardens

Roof Garden:

Sedum species (various)



OCULUS **ARQUITECTONICA**

PREPARED FOR:

Hines  **JM-ZELL**

PROJECT:

CARLYLE SOUTH
ALEXANDRIA, VIRGINIA

PAGE NO.

DRAWING:

Liner Building Planting Materials

SCALE:

NTS

DATE:

2017-08-21

PREPARED BY:

ARQUITECTONICA

O C U L U S

2018-03-15