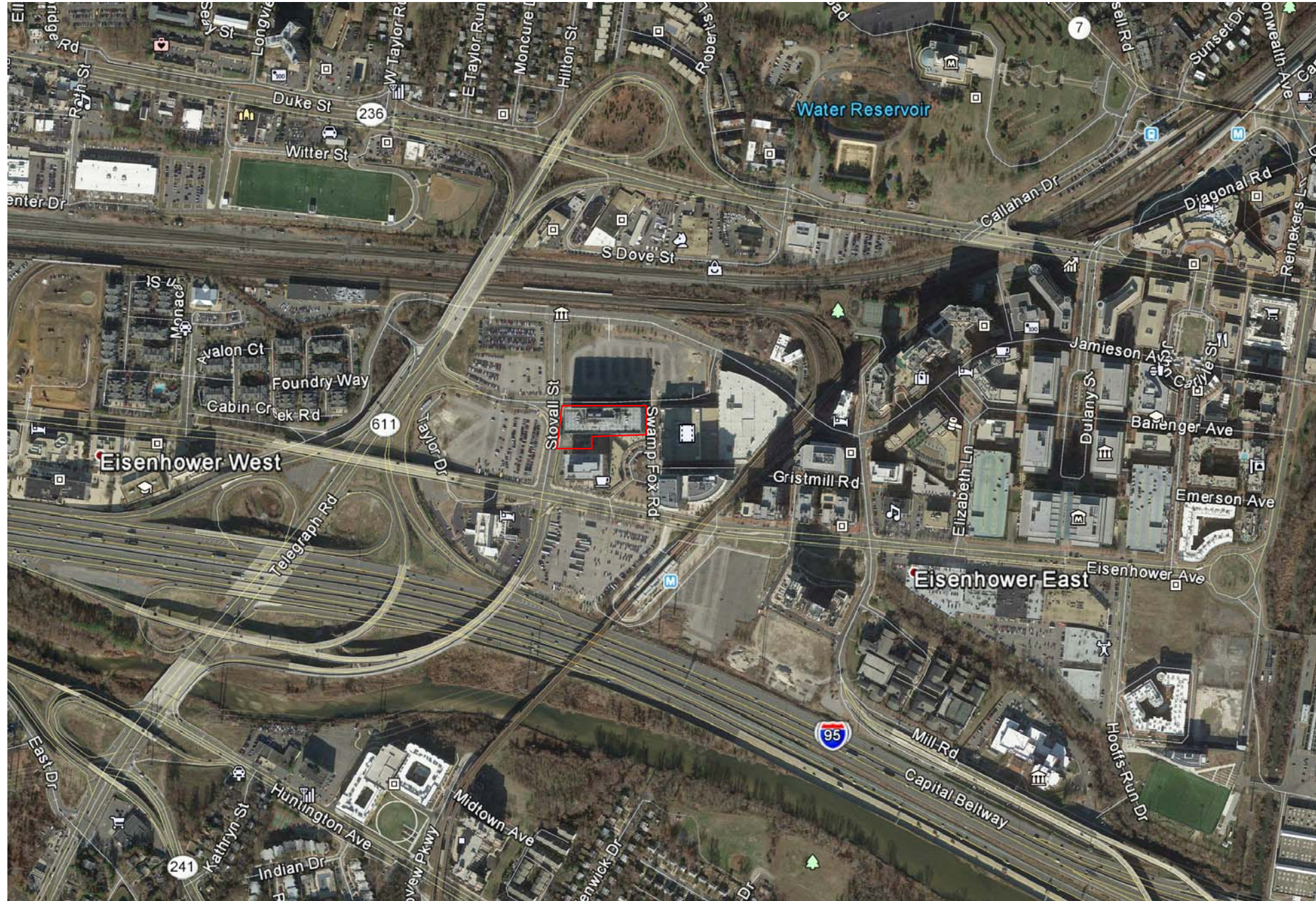


# 200 STOVALL STREET - RESIDENTIAL CONVERSION

200 STOVALL STREET, ALEXANDRIA, VA 22314



PROJECT N° 20170012

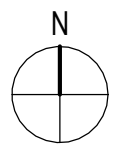
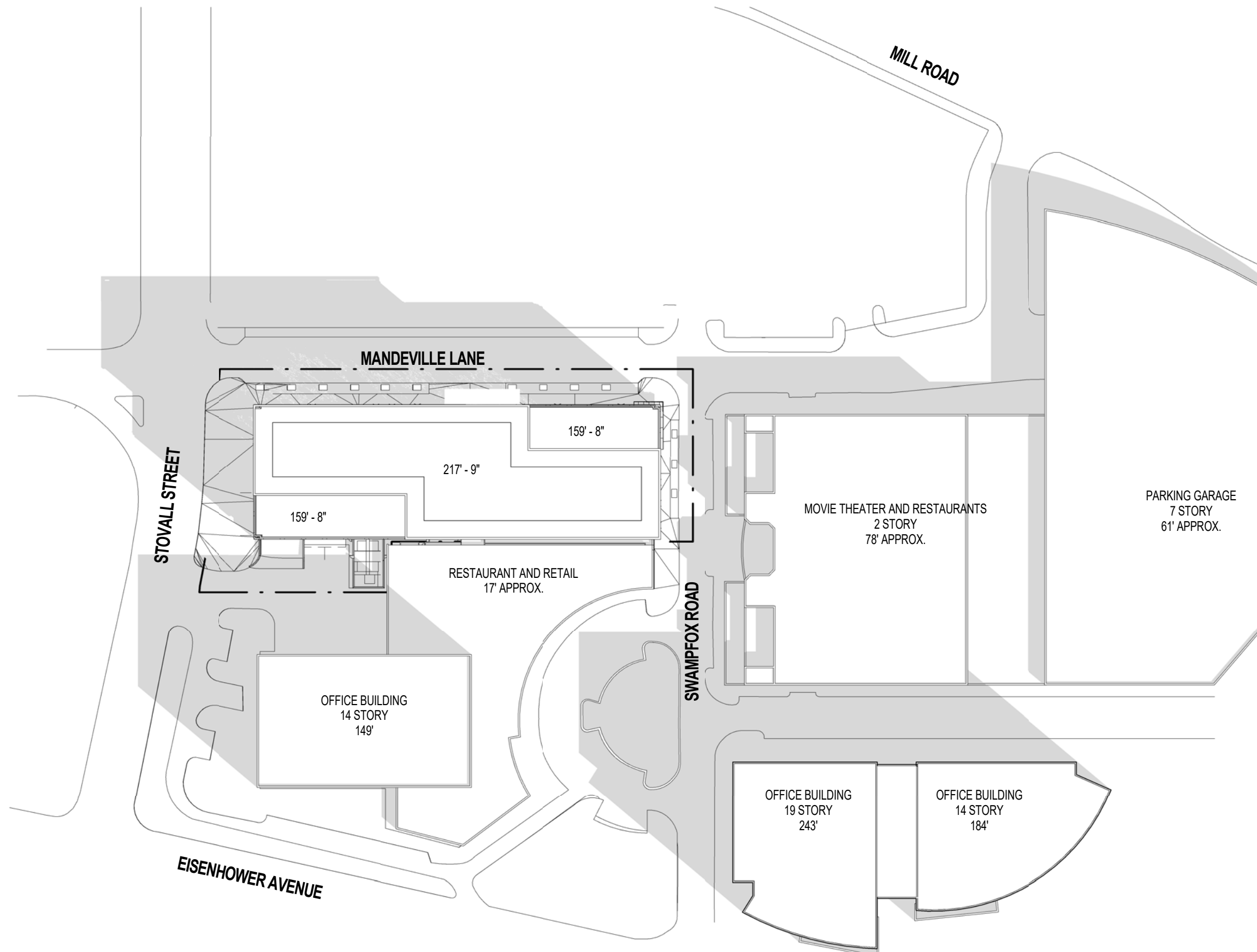
03/15/2018

N.T.S.

LOCATION MAP

200 Stovall Street Conversion  
Alexandria, VA 22314



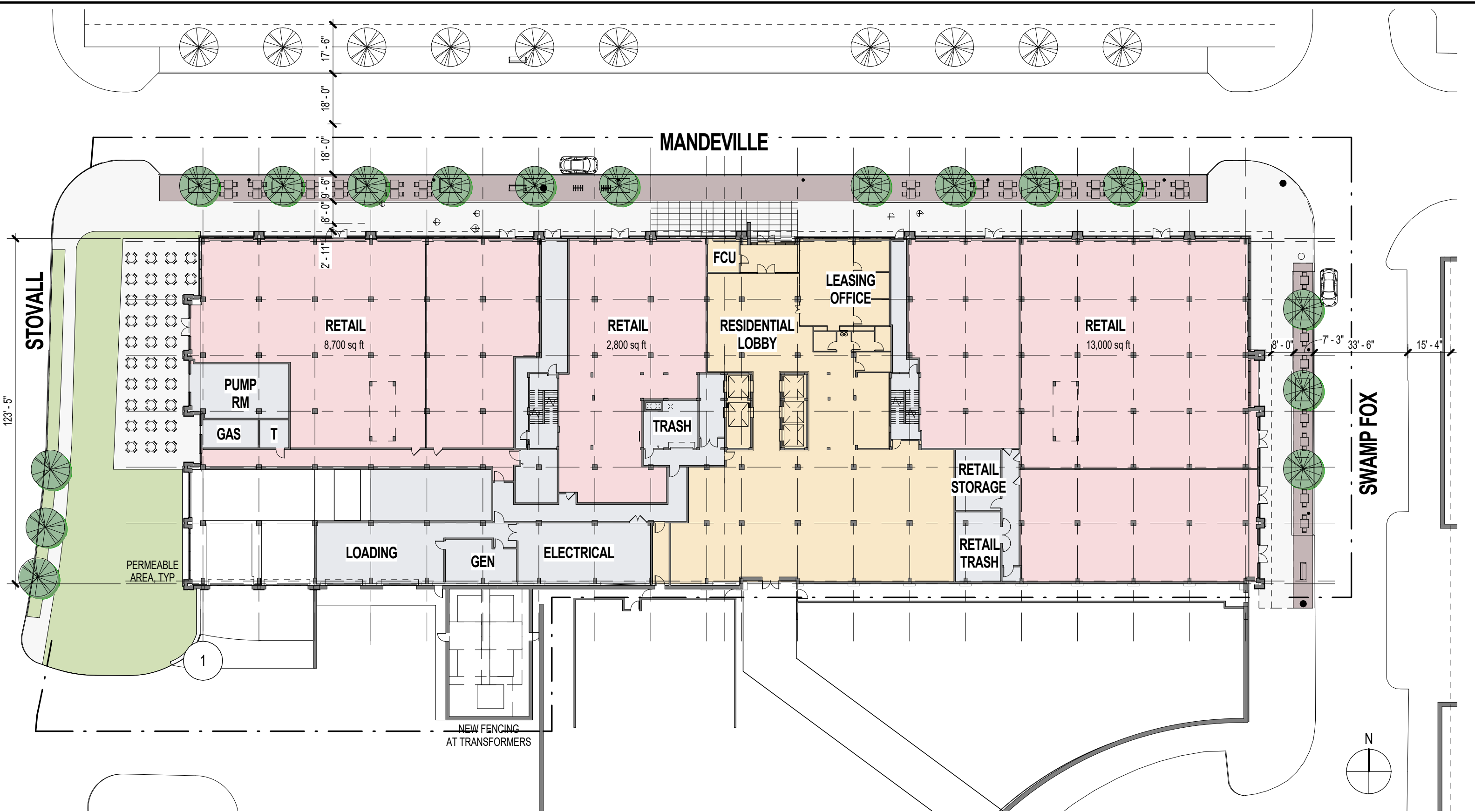


PROJECT N° 20170012 | 03/15/2018 | SCALE: 1'-0" = 100'-0"

**SITE PLAN**

200 Stovall Street Conversion  
Alexandria, VA 22314





PROJECT N° 20170012

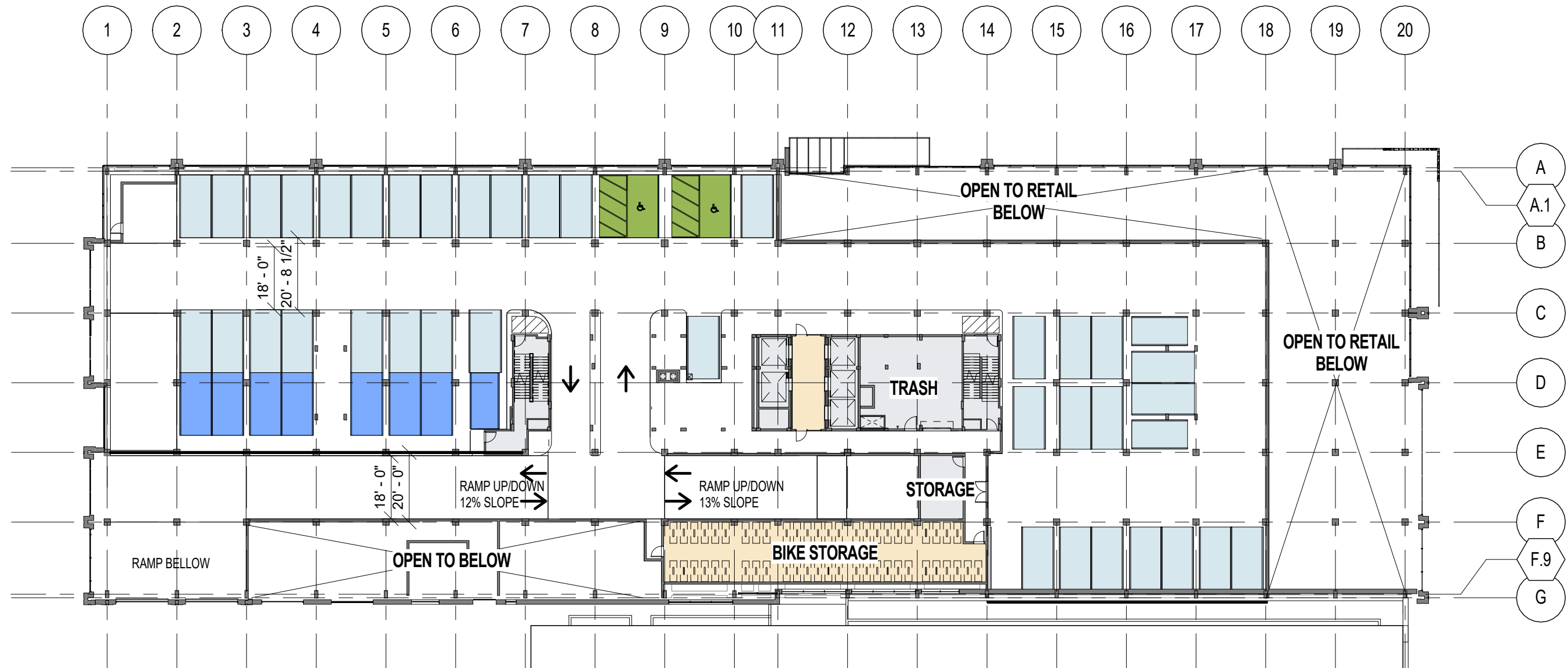
03/15/2018

SCALE: 1/32" = 1'-0"

PLAN - LEVEL 1 RETAIL AND LANDSCAPE

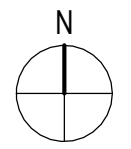
200 Stovall Street Conversion  
Alexandria, VA 22314





### PARKING LEGEND

- STANDARD RESIDENTIAL SPACE
- TANDEM RESIDENTIAL SPACE
- ADA RESIDENTIAL SPACE
- ADA VAN RESIDENTIAL SPACE

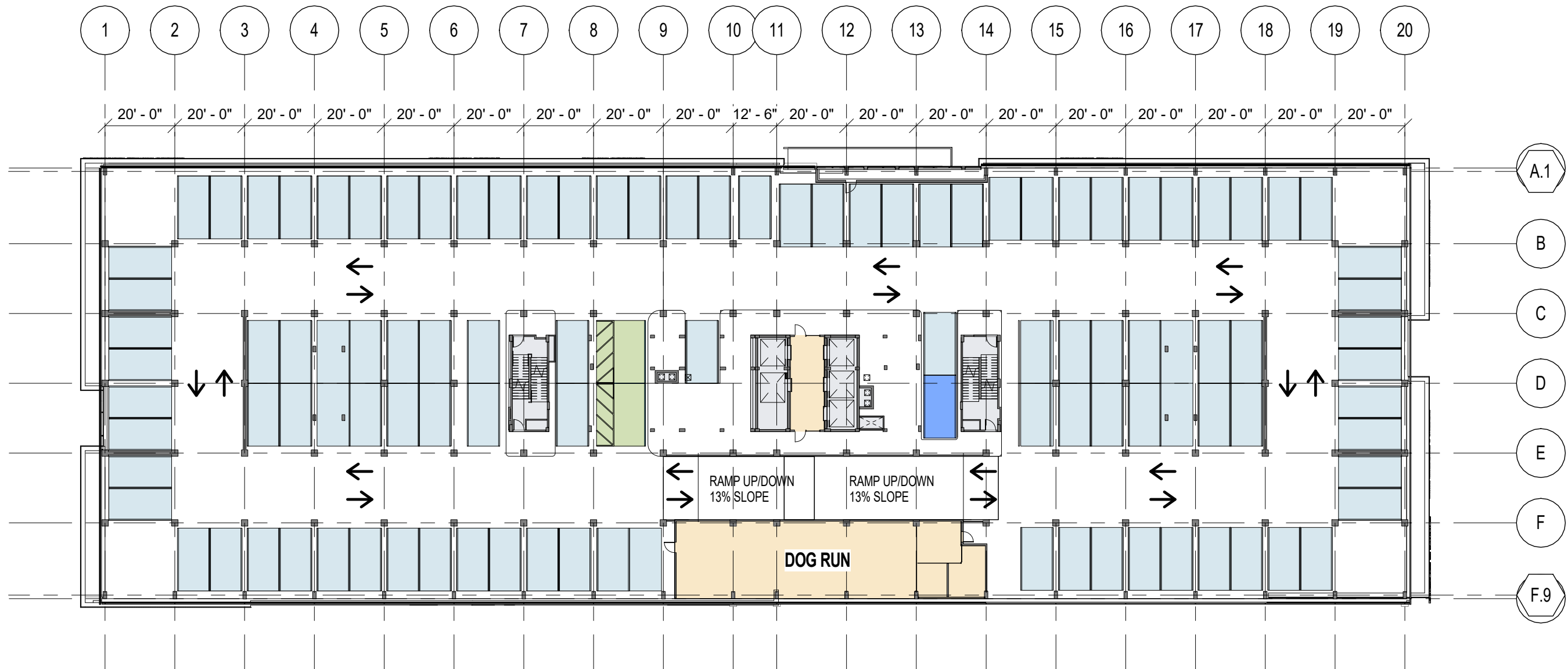


PROJECT N° 20170012 | 03/15/2018 | SCALE: 1/32" = 1'-0"

PLAN - LEVEL 2 PARKING

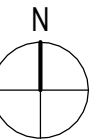
200 Stovall Street Conversion  
Alexandria, VA 22314





### PARKING LEGEND

- STANDARD RESIDENTIAL SPACE
- TANDEM RESIDENTIAL SPACE
- ADA RESIDENTIAL SPACE
- ADA VAN RESIDENTIAL SPACE



PROJECT N° 20170012

03/15/2018

PLAN - LEVEL 3 & 4 PARKING

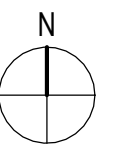
200 Stovall Street Conversion  
Alexandria, VA 22314





### UNIT MATRIX

- 3 BED OUTBOARD
- 2 BED OUTBOARD
- 2 BED INBOARD
- 2 BED IN & OUT
- 1 BED INBOARD
- 1 BED OUTBOARD
- ALCOVE
- 1 BED - JR



PROJECT N° 20170012

03/15/2018

PLAN - LEVEL 5- 12 - TYPICAL RES. LAYOUT

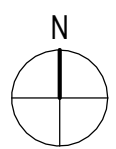
200 Stovall Street Conversion  
Alexandria, VA 22314





### UNIT MATRIX

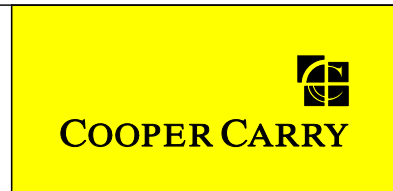
- 3 BED OUTBOARD
- 2 BED OUTBOARD
- 2 BED INBOARD
- 2 BED IN & OUT
- 1 BED INBOARD
- 1 BED OUTBOARD
- ALCOVE
- 1 BED - JR

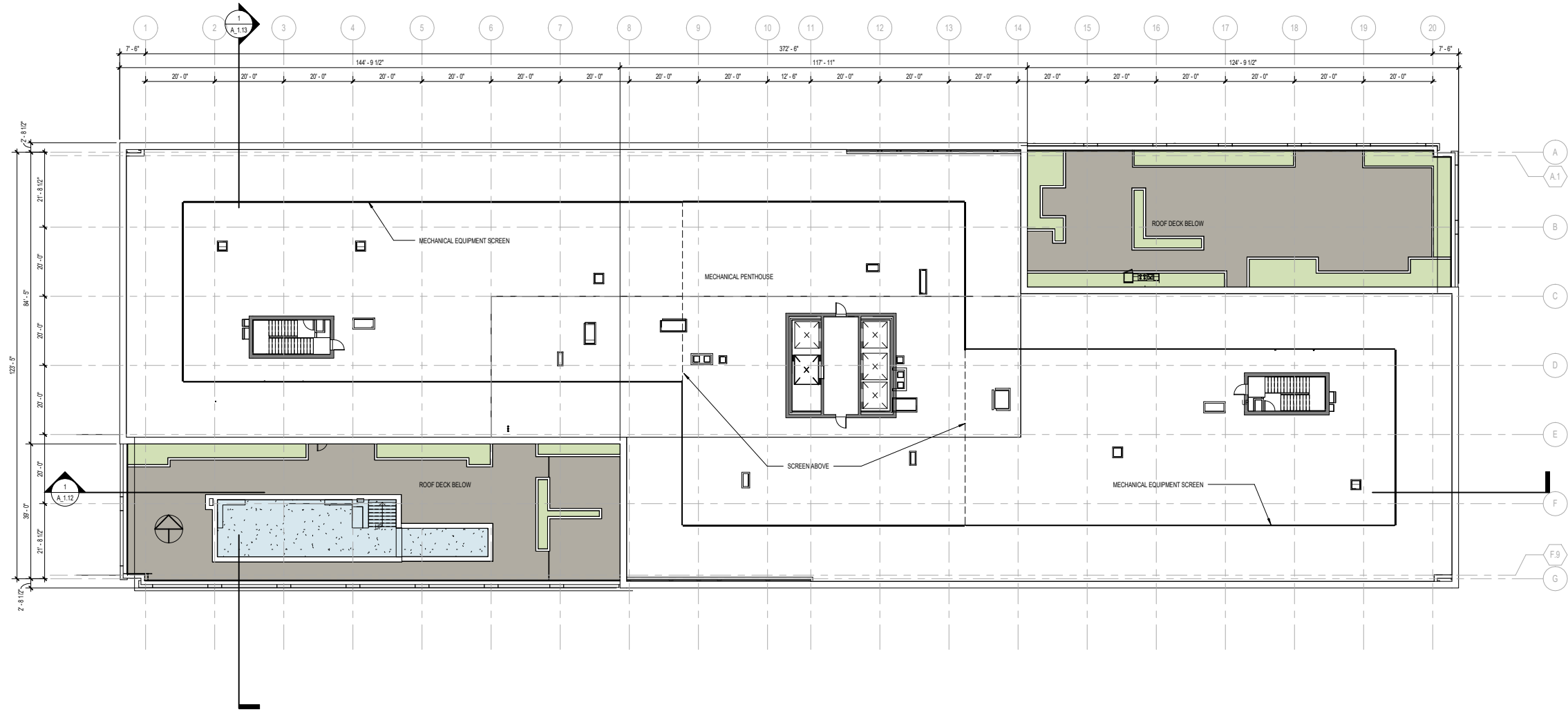


PROJECT N° 20170012 | 03/15/2018

PLAN - LEVEL 15 & 16

200 Stovall Street Conversion  
Alexandria, VA 22314





1 ROOF PLAN - DRB  
 A\_1.08 SCALE: 1/16" = 1'-0"





PROJECT N° 20170012

03/15/18

POOL DECK

200 Stovall Street Conversion  
Alexandria, VA 22314

EXISTING VIEW FROM NORTHEAST



PROPOSED VIEW FROM NORTHEAST

PROJECT N° 20170012

03/15/2018 N.T.S.

PERSPECTIVES - NORTHEAST

200 Stovall Street Conversion  
Alexandria, VA 22314





PROJECT N° 20170012

03/15/18

NE RETAIL CORNER

200 Stovall Street Conversion  
Alexandria, VA 22314



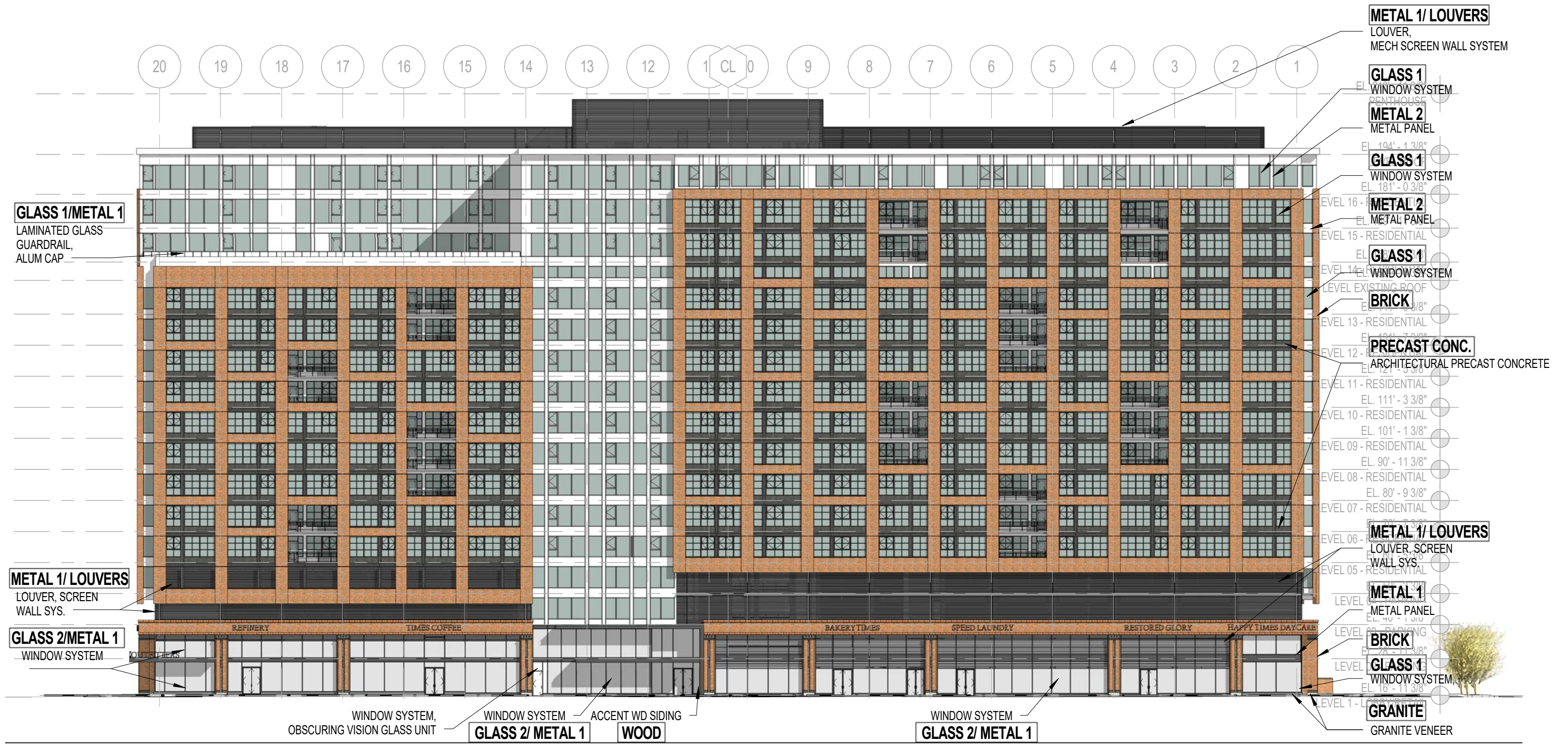
2 ENLARGED ELEVATION - NORTH RETAIL  
 A\_1.20 SCALE: 1/8" = 1'-0"



3 SIDEWALK PERSPECTIVE AT MANDEVILLE LANE  
 A\_1.20 SCALE:



1 NE RETAIL CORNER PERSPECTIVE  
 A\_1.20 SCALE:

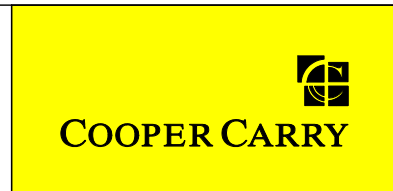


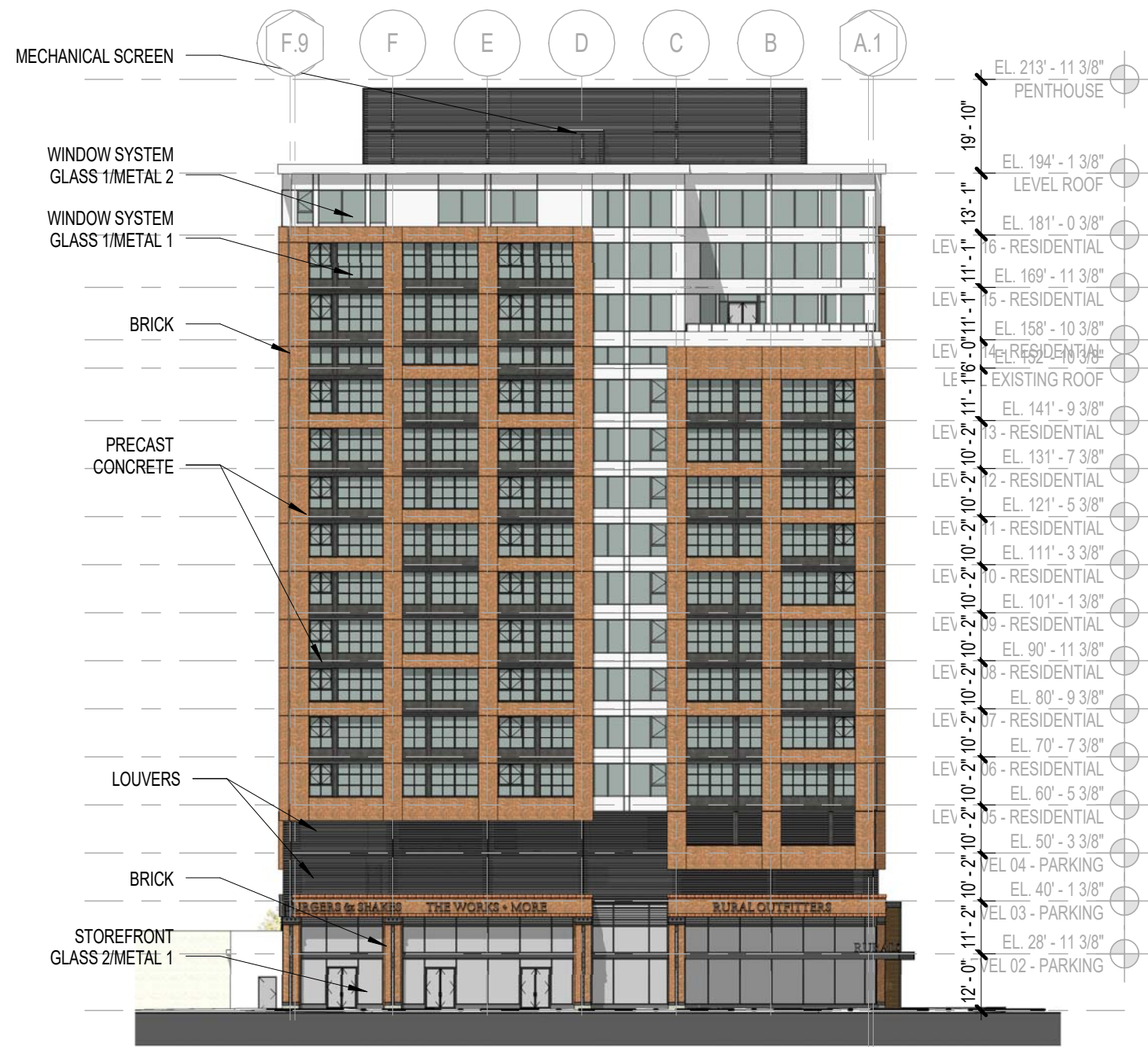
PROJECT N° 20170012

03/15/2018

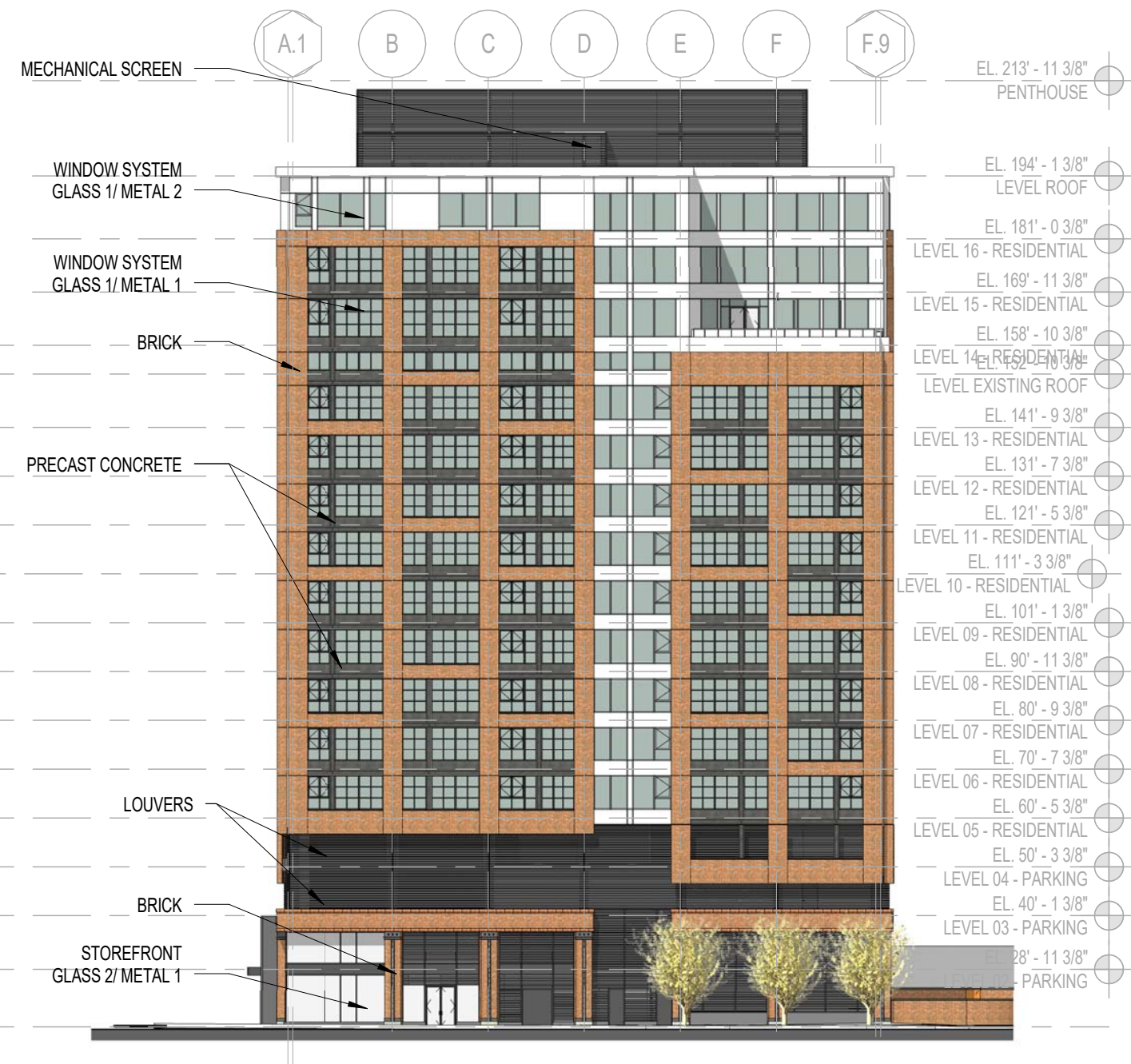
ELEVATION - NORTH

200 Stovall Street Conversion  
Alexandria, VA 22314





EAST ELEVATION



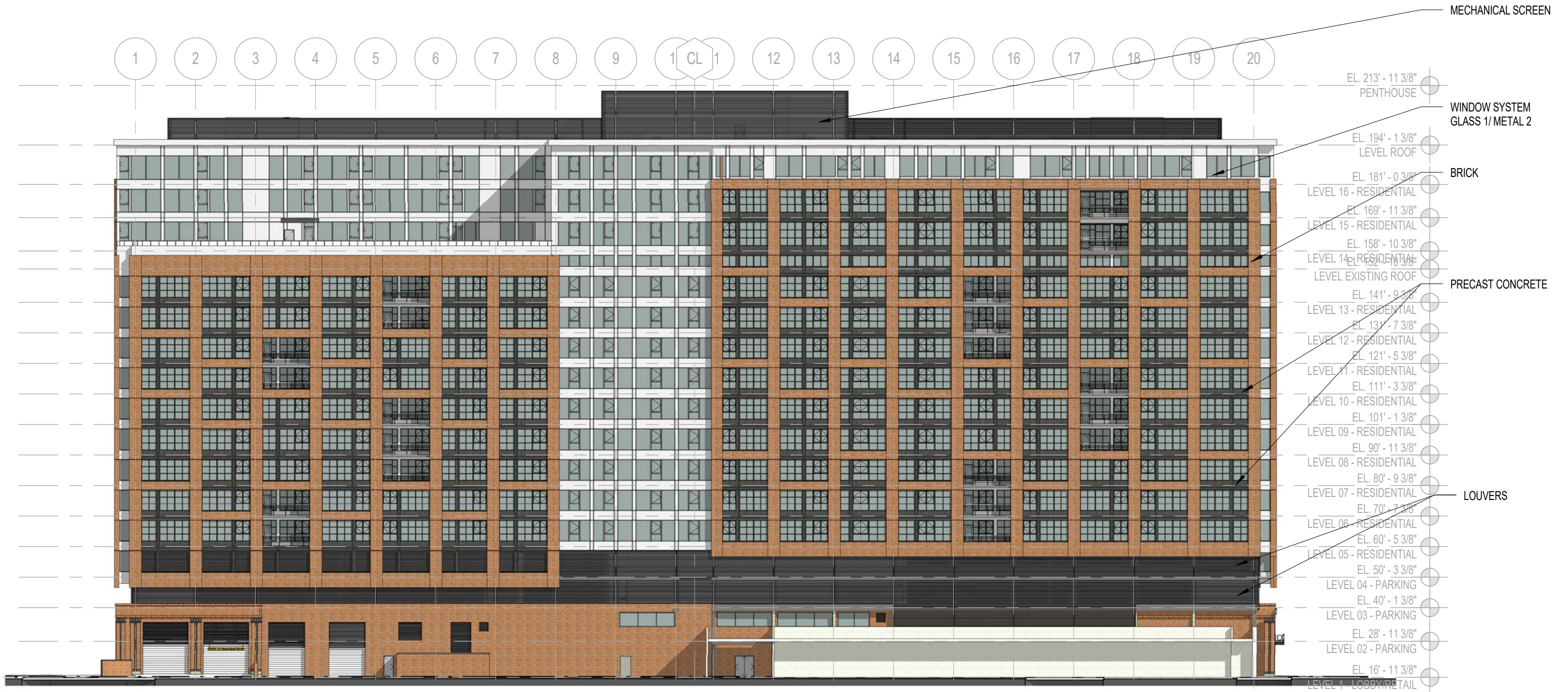
WEST ELEVATION

PROJECT N° 20170012 | 03/15/2018 | SCALE: 1/32" = 1'-0"

ELEVATIONS - EAST & WEST

200 Stovall Street Conversion  
Alexandria, VA 22314





PROJECT N° 20170012

03/15/2018

SCALE: 1/32" = 1'-0"

ELEVATION - SOUTH

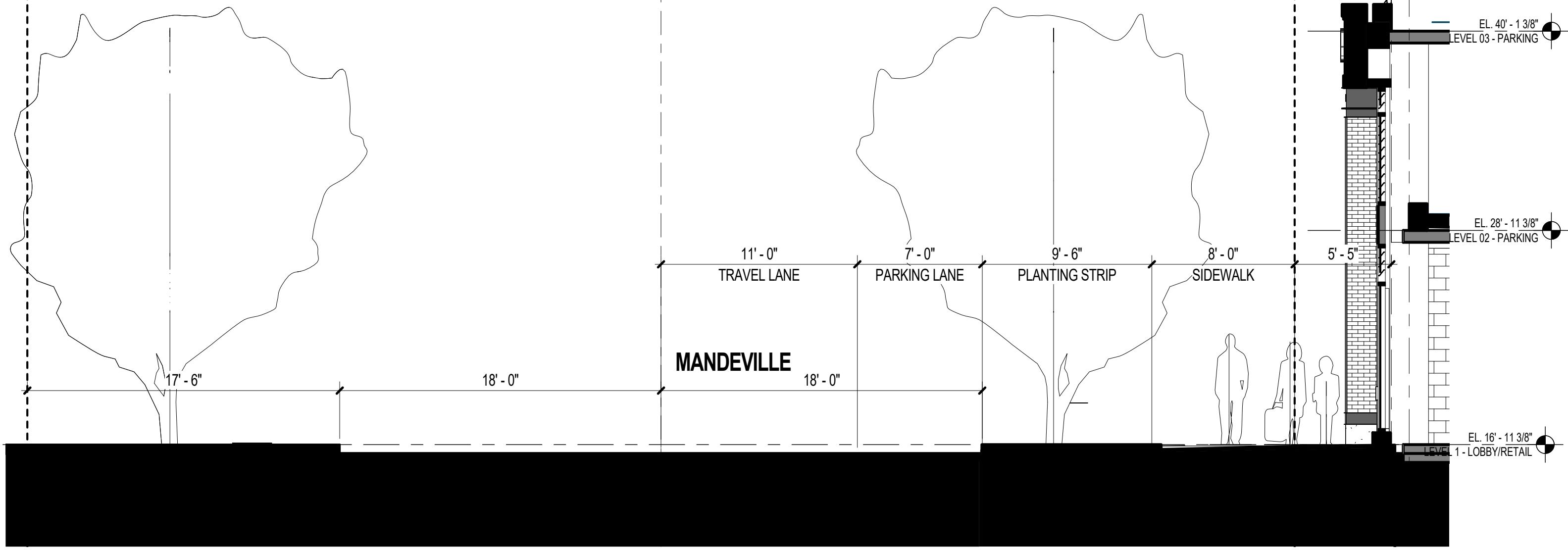
200 Stovall Street Conversion  
Alexandria, VA 22314



R.O.W./BUILD-TO LINE

PROPERTY LINE

R.O.W./BUILD-TO LINE



PROJECT N° 20170012 | 07/20/17 | SCALE: 3/16" = 1'-0"

STREET SECTION - MANDEVILLE

SHEET 5

200 Stovall Street Conversion  
Alexandria, VA 22314

