

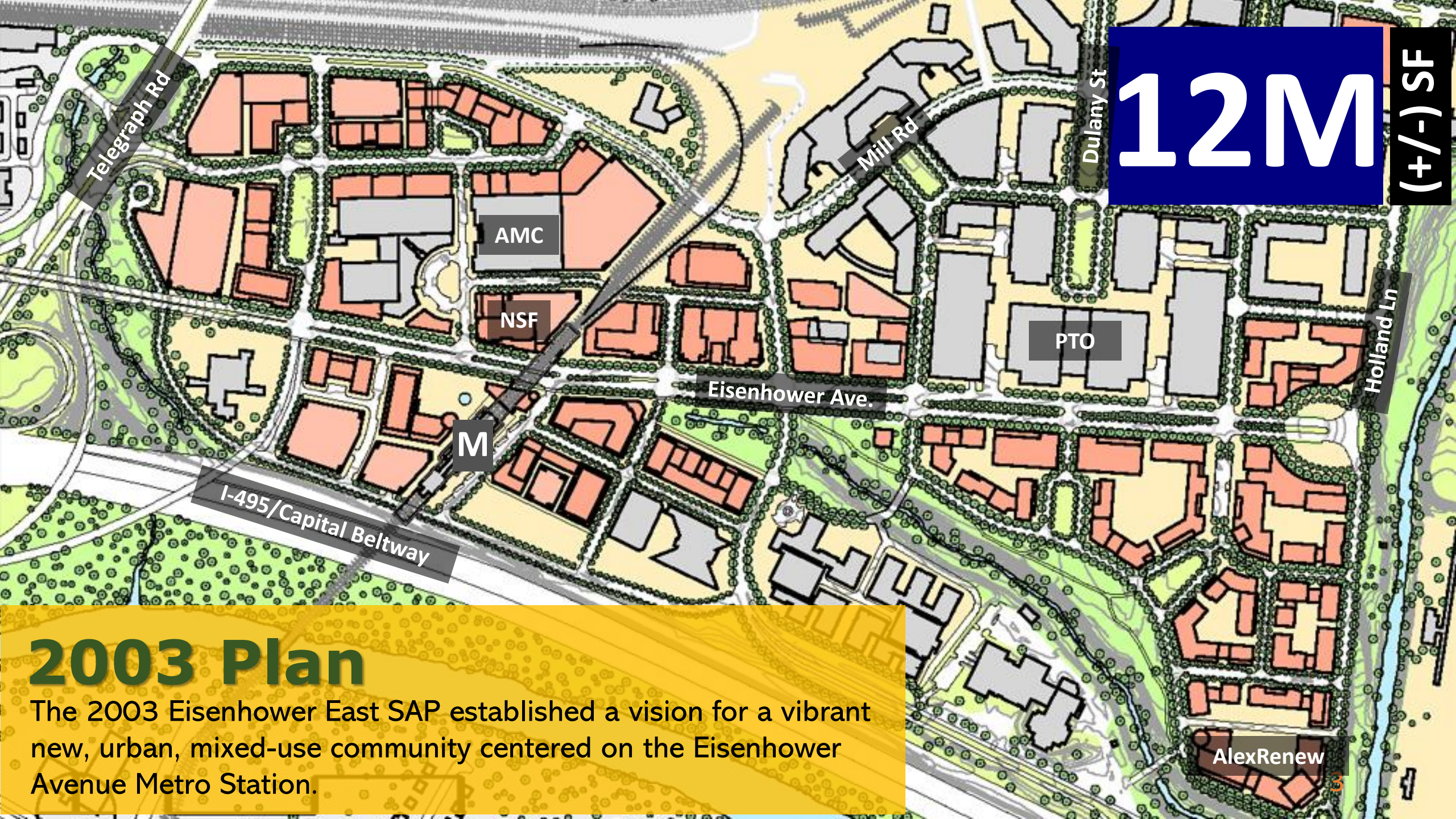


eisenhower **east**

Transportation Commission 05.15.2019



Planning and Zoning is asking the Transportation Commission to provide feedback on the proposed Eisenhower East Small Area Plan Mobility principles.



12M
(+/-) SF

I-495/Capital Beltway

M

Eisenhower Ave.

AMC

NSF

PTO

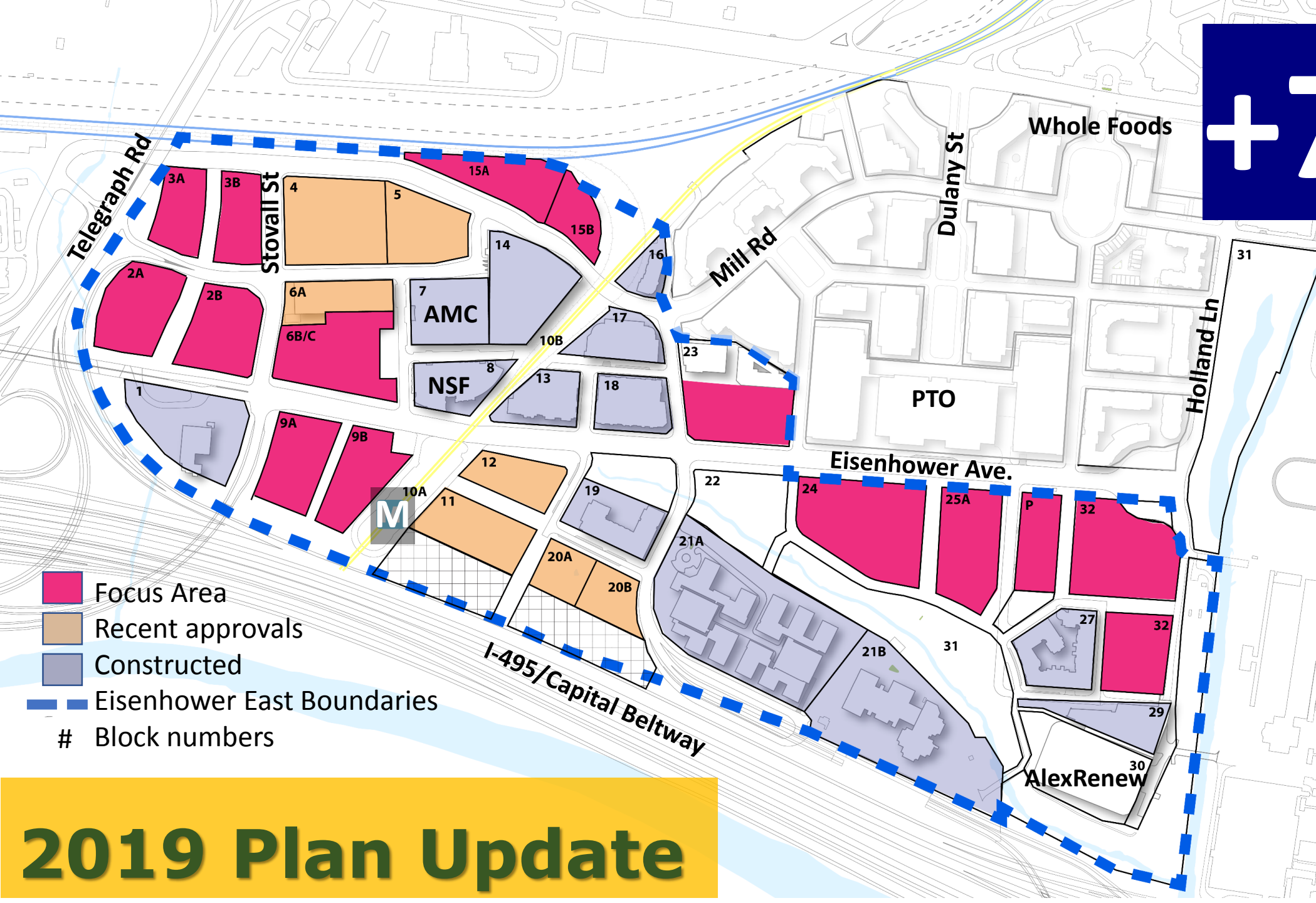
AlexRenew

2003 Plan

The 2003 Eisenhower East SAP established a vision for a vibrant new, urban, mixed-use community centered on the Eisenhower Avenue Metro Station.

+7M

(+/-) SF



- Focus Area
- Recent approvals
- Constructed
- Eisenhower East Boundaries
- # Block numbers



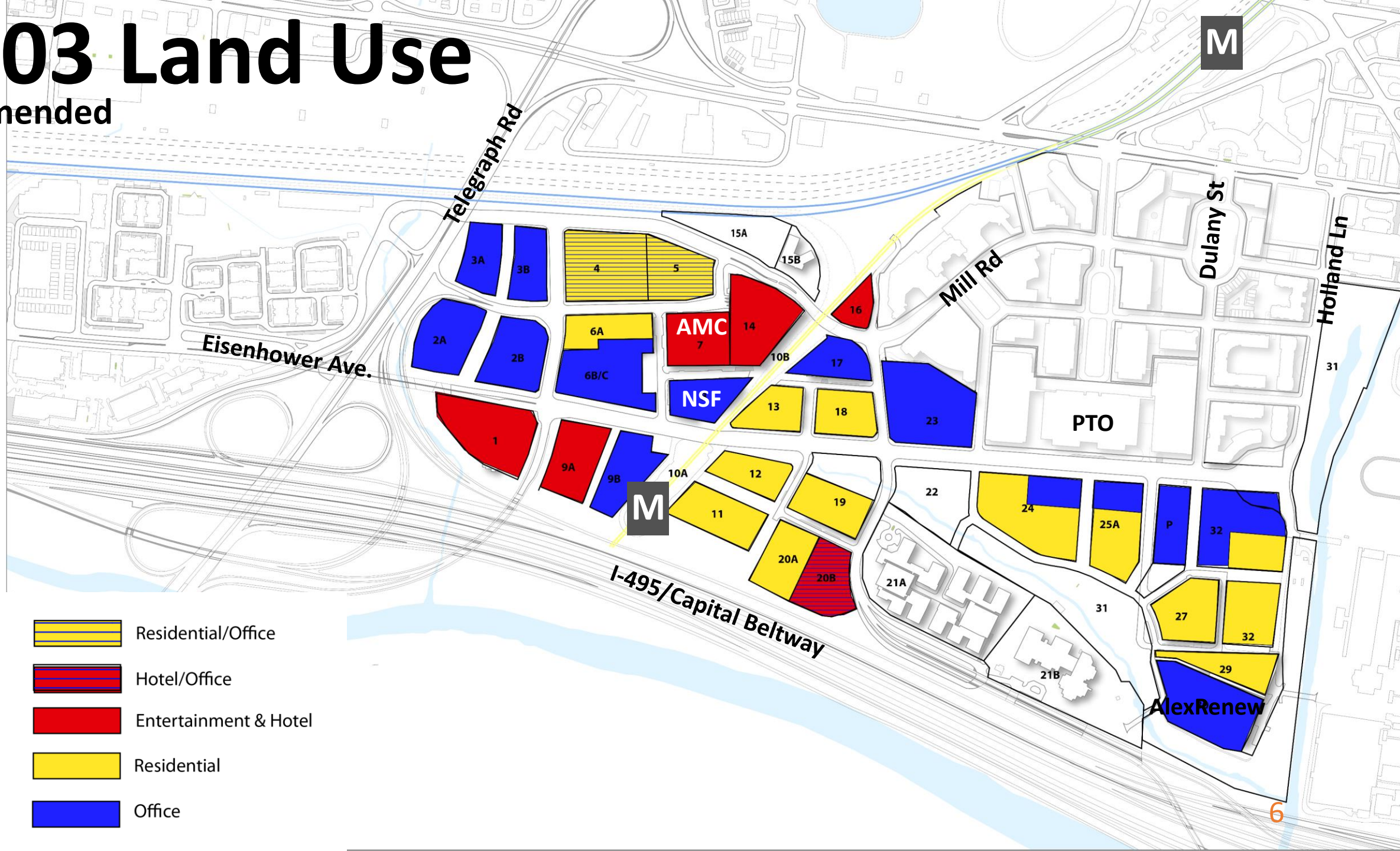
2019 Plan Update

Land Use



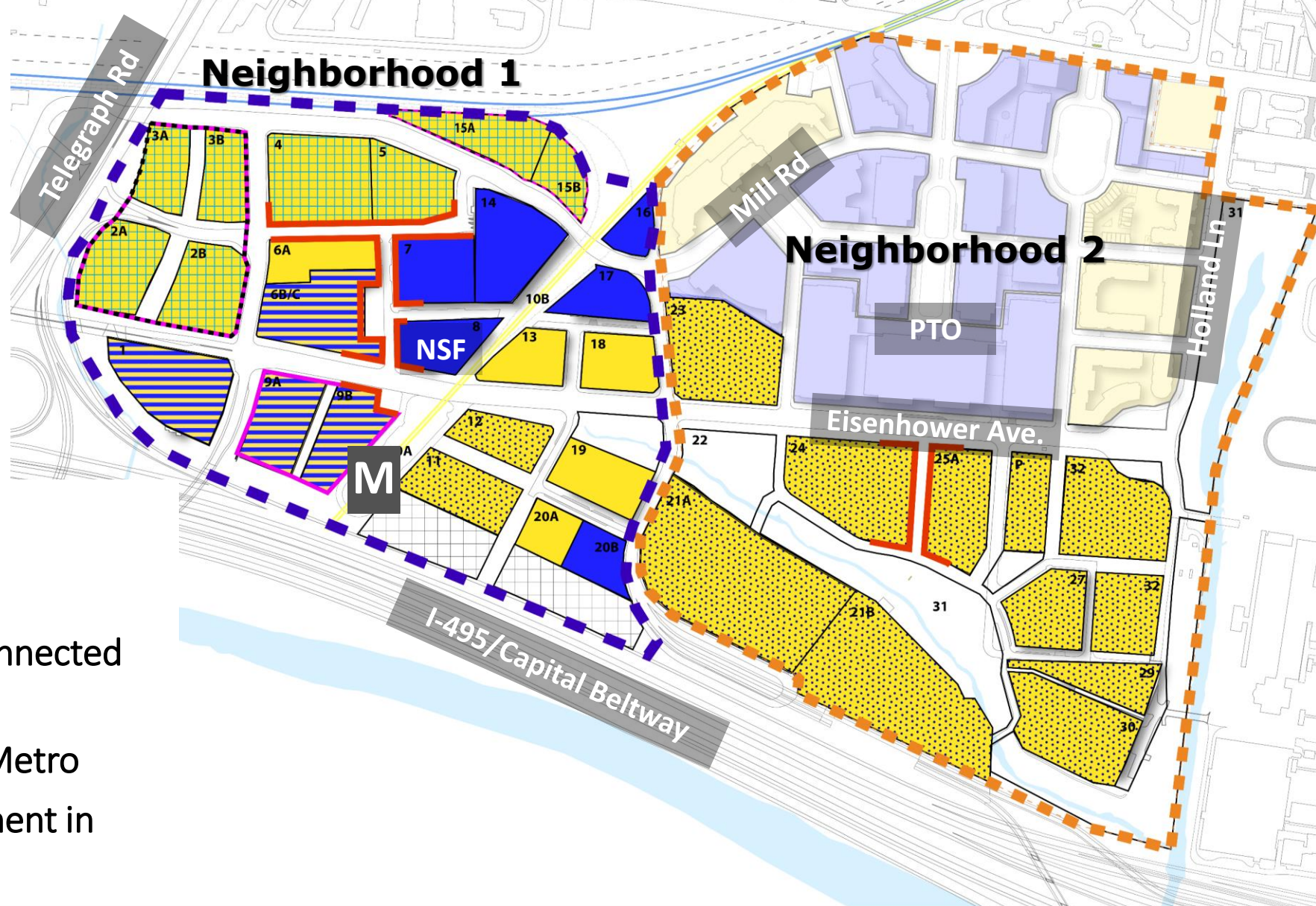
2003 Land Use

As Amended



-  Residential/Office
-  Hotel/Office
-  Entertainment & Hotel
-  Residential
-  Office

Proposed 2019 Land Use



THEMES:

1. Enhance Land Use Flexibility
2. Plan Area as two complete/connected Neighborhoods
3. Focus Commercial uses near Metro
4. Concentrate Retail/Entertainment in Neighborhood Districts

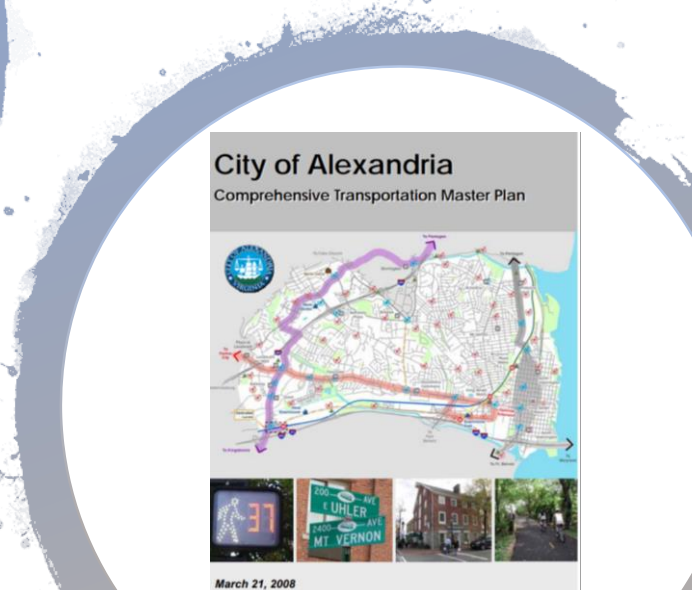


Mobility

Building on...

- Transportation Master Plan;
- Complete Street Design Guidelines;
- Vision Zero Action Plan;
- Environmental Action Plan;
- Feedback from community.

The plan will include recommendations prioritizing a safe environment for all **people** moving in and around Eisenhower East and beyond.







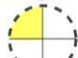

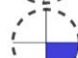


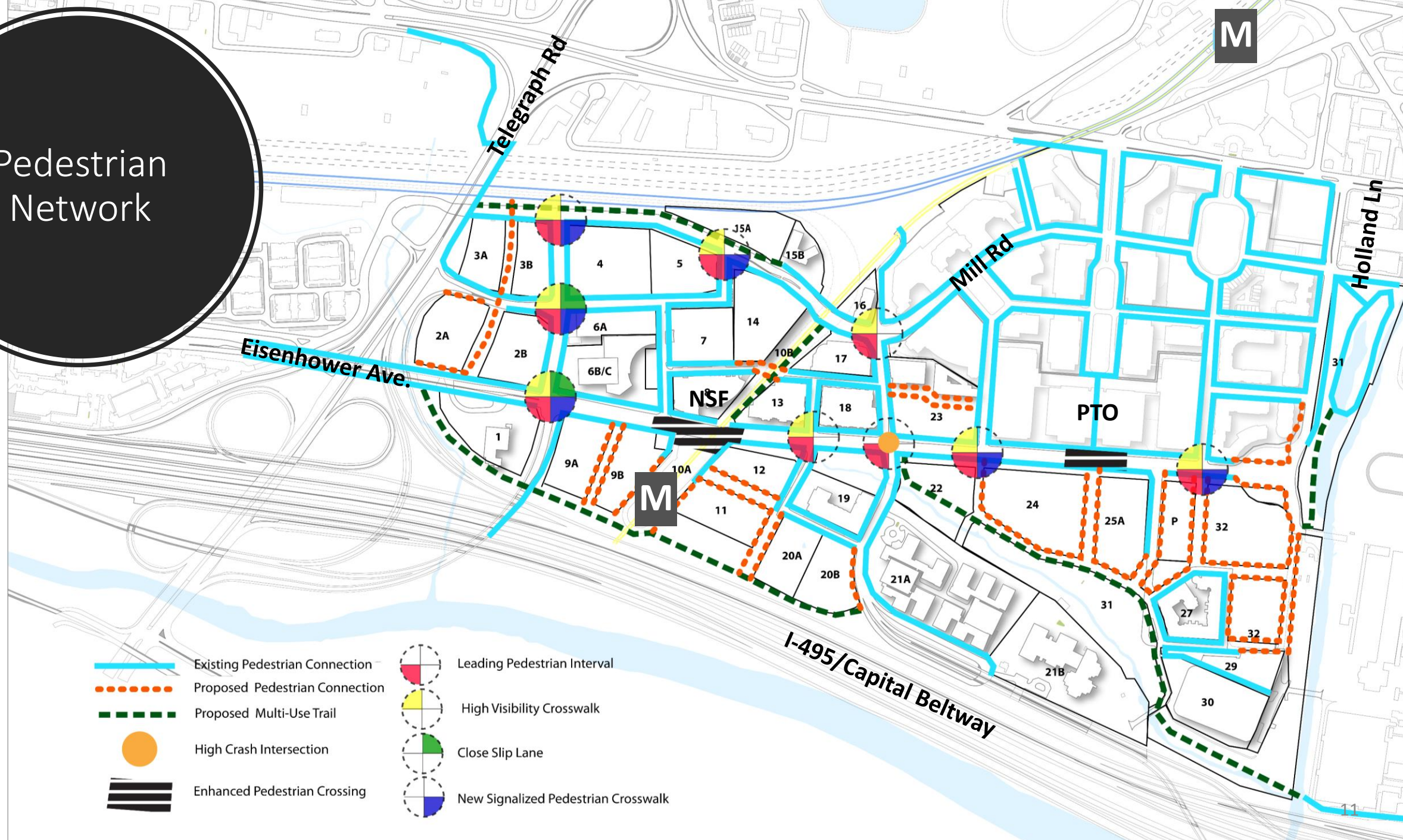


Existing Street Network

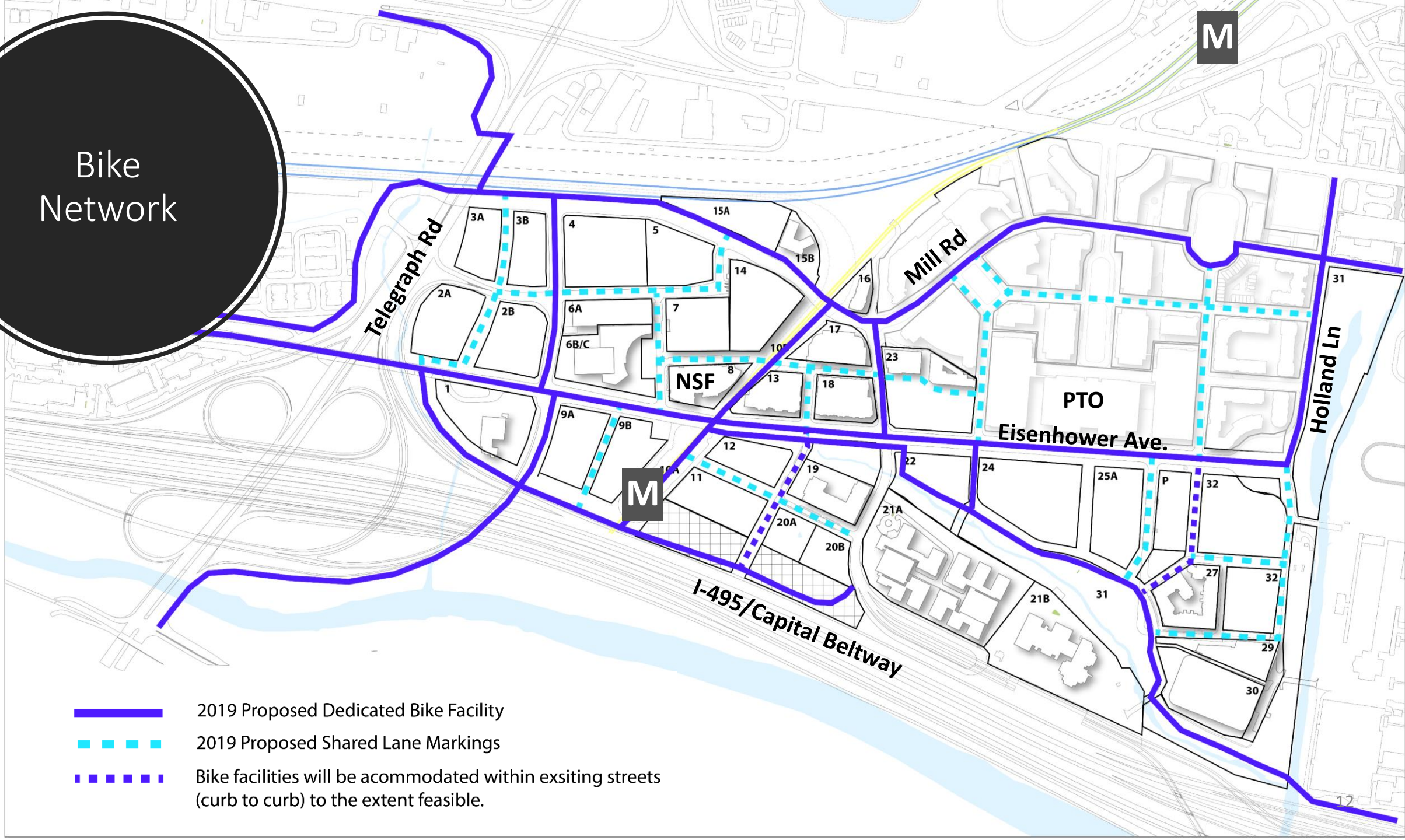
- Complete street-grid
- Transportation study underway
- Recommendations for all modes of transportation

Pedestrian Network

-  Existing Pedestrian Connection
-  Proposed Pedestrian Connection
-  Proposed Multi-Use Trail
-  High Crash Intersection
-  Enhanced Pedestrian Crossing
-  Leading Pedestrian Interval
-  High Visibility Crosswalk
-  Close Slip Lane
-  New Signalized Pedestrian Crosswalk

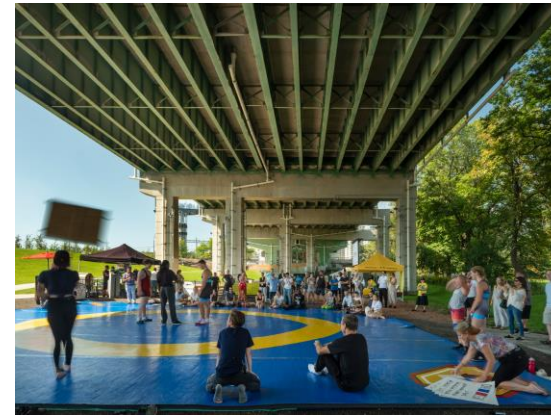
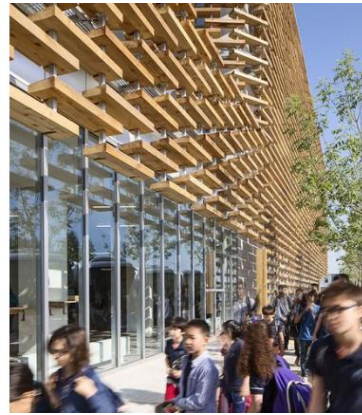


Bike Network



Eisenhower East Small Area Plan - Priorities

- Affordable housing
- Schools
- Pedestrian Bike Safety/Access
- New/Improved Open Spaces
- Enhance Metro Access- Eisenhower Avenue Crossing
- Improved pedestrian connections under railroad tracks
- Open Space Under Metrorail Tracks

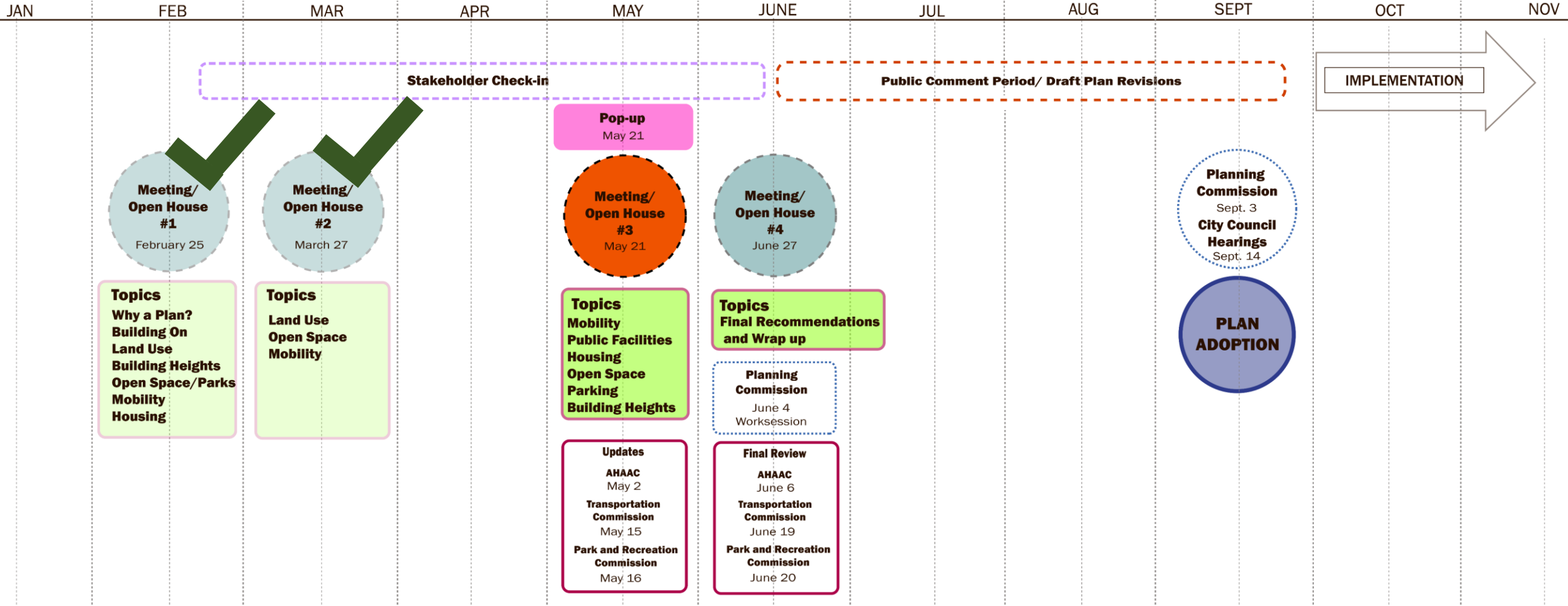


PROJECT SCHEDULE

EISENHOWER EAST PHASE 2 PLAN UPDATE


05/02/2019

2019



Proposed Mobility Themes

- 1. Recommend land use and density** to maximize the benefits of the Metrorail Station.
- Explore a potential northern Metrorail Station entrance to **enhance access to the blocks north of Eisenhower Avenue.**
- 3. Improve internal circulation** with a framework plan that completes an interconnected street grid.
- 4. Enhance the pedestrian crossing at the Metrorail Station** with an interim improvement in the near-term and a permanent improvement in the longer-term.
- 5. Upgrade pedestrian and bike facilities** to be consistent with the City's Complete Streets Guidelines, Vision Zero Action Plan and the 2016 Bicycle and Pedestrian Plan update to the Transportation Master Plan.
- 6. Expand bike facilities within the area and connecting to the broader network outside of the plan area.**
- 7. Integrate bus transit** consistent with the recommendations of the Transit Vision Plan and best practices for safe, accessible, and efficient bus service.
- Explore **expanding the existing tunnel** into a concourse connection at Mill Road under the rail line.



Jose Carlos Ayala, CNUA
Project Manager
Department of Planning and Zoning
jose.ayala@alexandriava.gov

Carrie S. Beach
NPCD Division Chief
Department of Planning and Zoning
carrie.beach@alexandriava.gov

eisenhower **east**

Transportation Commission 05.15.2019