

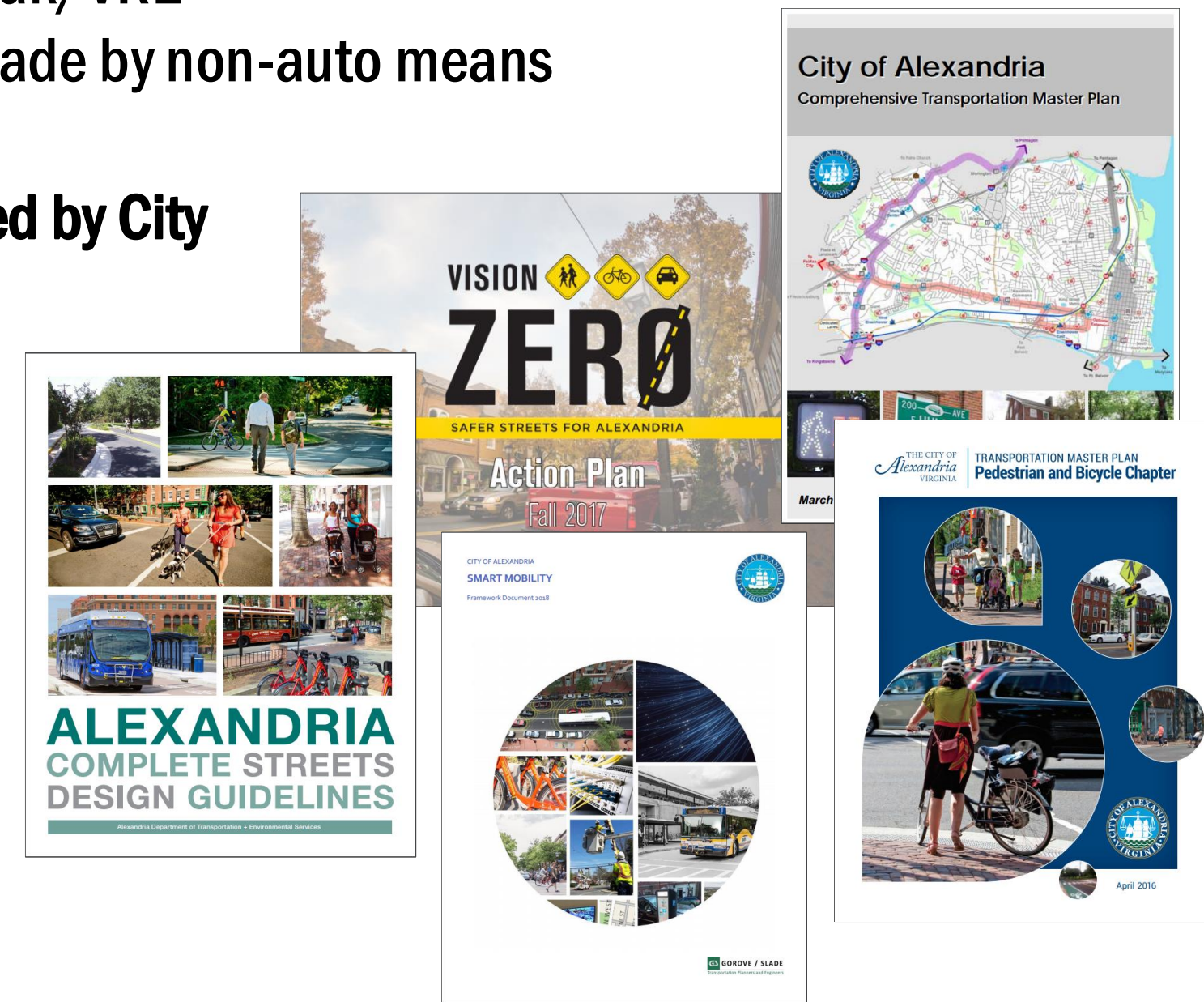
Factors Considered in Preliminary Analysis

- **Mixed-Use, Transit Oriented Development**

- Area is served by two Metro Stations and Amtrak/VRE
- Trips to and from destinations can easily be made by non-auto means

- **Multimodal Transportation Improvements Planned by City**

- Complete Streets
- Vision Zero
- Transportation Master Plan
- Bicycle and Pedestrian Master Plan
- Smart Mobility



- **Changes in Transportation since 2003 Plan was Approved**

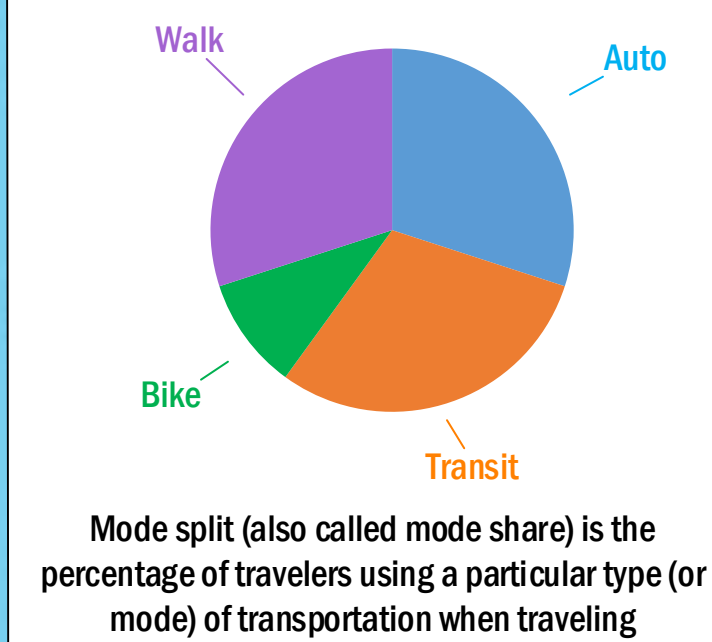
- Parking Standards for New Developments
- Capital Bikeshare
- Transportation Network Companies (TNCs)
Uber, Lyft, Via, etc.
- Car-Sharing
Zipcar, Maven, Car2Go, Free2Move, etc.
- Dockless Mobility
Lime, Lyft, Jump, Bird, Bolt, etc.



Travel Assumptions used in Preliminary Analysis

- **Mode Splits Assumed in Preliminary Study**

- Based data collected at comparable sites in Northern Virginia (including Eisenhower East) and Washington DC, Census data, and WMATA Ridership Survey



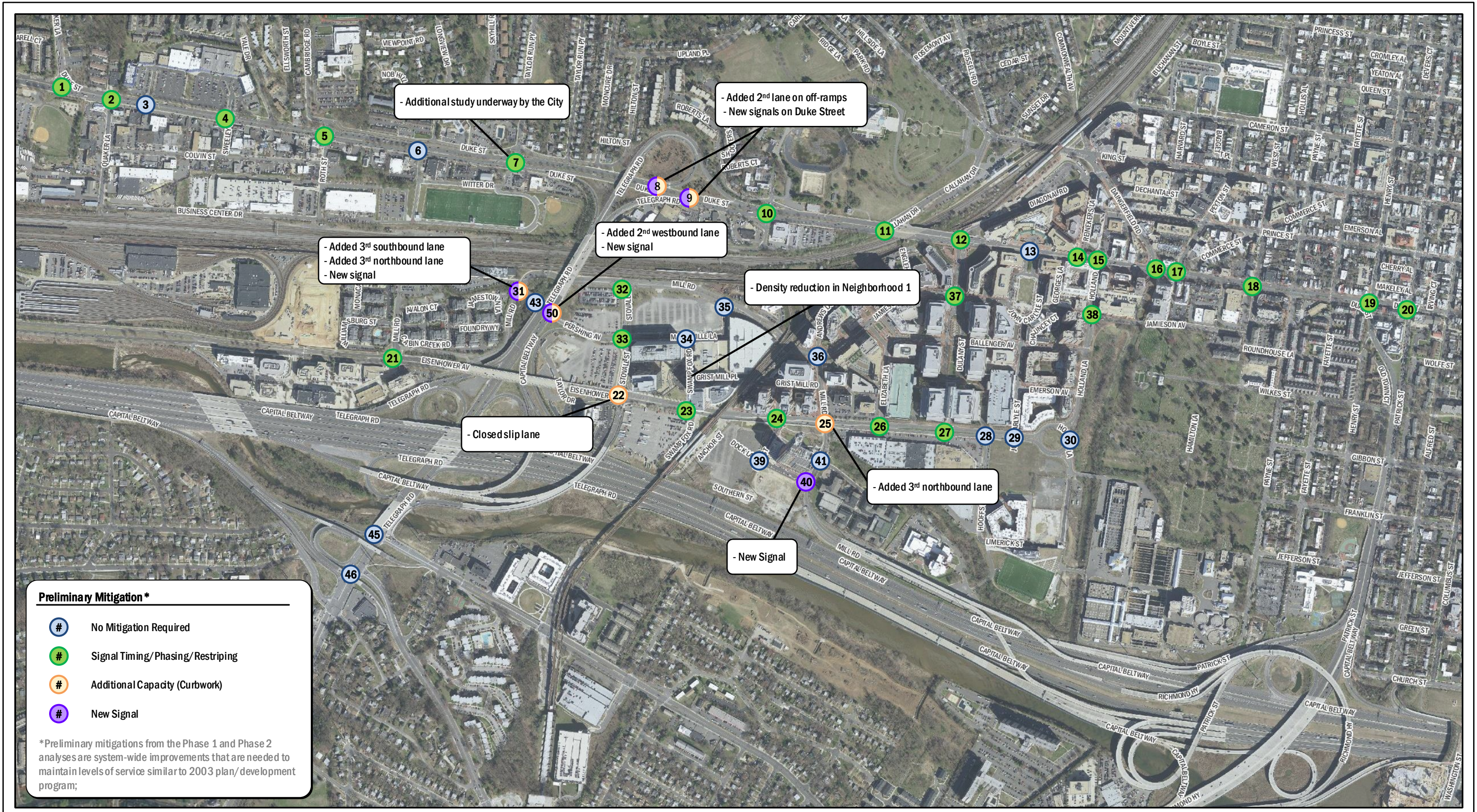
Land Use	Proximity to Metro/Type	Auto	Transit	Bike	Walk
Residential	Adjacent to Metro	30%	55%	5%	10%
	<1/4 Mile to Metro	35%	50%	5%	10%
	>1/4 Mile and <1/2 Mile	40%	45%	5%	10%
Office	Adjacent to Metro	30%	60%	5%	5%
	<1/4 Mile to Metro	35%	55%	5%	5%
	>1/4 Mile and <1/2 Mile	40%	50%	5%	5%
Retail	Neighborhood Serving Retail	10%	10%	5%	75%
	Destination Retail	50%	10%	5%	35%
	Grocery Store	65%	5%	5%	25%
Hotel	All	20%	55%	1%	24%

Findings from Preliminary Analysis

Increase in density and changes in uses will have a manageable impact on the surrounding transportation network, assuming recommendations and mitigation measures are implemented (*Preliminary Mitigations are shown on accompanying board*)

Recommendations from Preliminary Analysis

- . Complete Grid of Streets
- . Standardization of Signals
- . Study Feasibility of Implementing Increased Bus Service
- . Provide Parking Ratios to Encourage Non-Auto Use
- . Implement Transportation Demand Management (TDM) Plans
- . Improved Bicycle Infrastructure
- . Implement Transportation Technologies



Preliminary Mitigation*

- # No Mitigation Required
- # Signal Timing/Phasing/Restriping
- # Additional Capacity (Curbwork)
- # New Signal

*Preliminary mitigations from the Phase 1 and Phase 2 analyses are system-wide improvements that are needed to maintain levels of service similar to 2003 plan/development program;

