

ALBERT V. BRYAN UNITED STATES COURTHOUSE



A. V. Bryan Courthouse
Perimeter Security Improvements
Concept Design Package

February, 2012

PROPERTY OF UNITED STATES GOVERNMENT
COPYING, DISSEMINATION, OR DISTRIBUTION OF THESE DRAWINGS,
PLANS, OR SPECIFICATIONS TO UNAUTHORIZED USERS IS PROHIBITED



AECOM

Legend

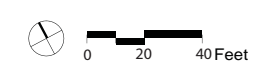
-  Permanent Perimeter Security Line
-  Property Line

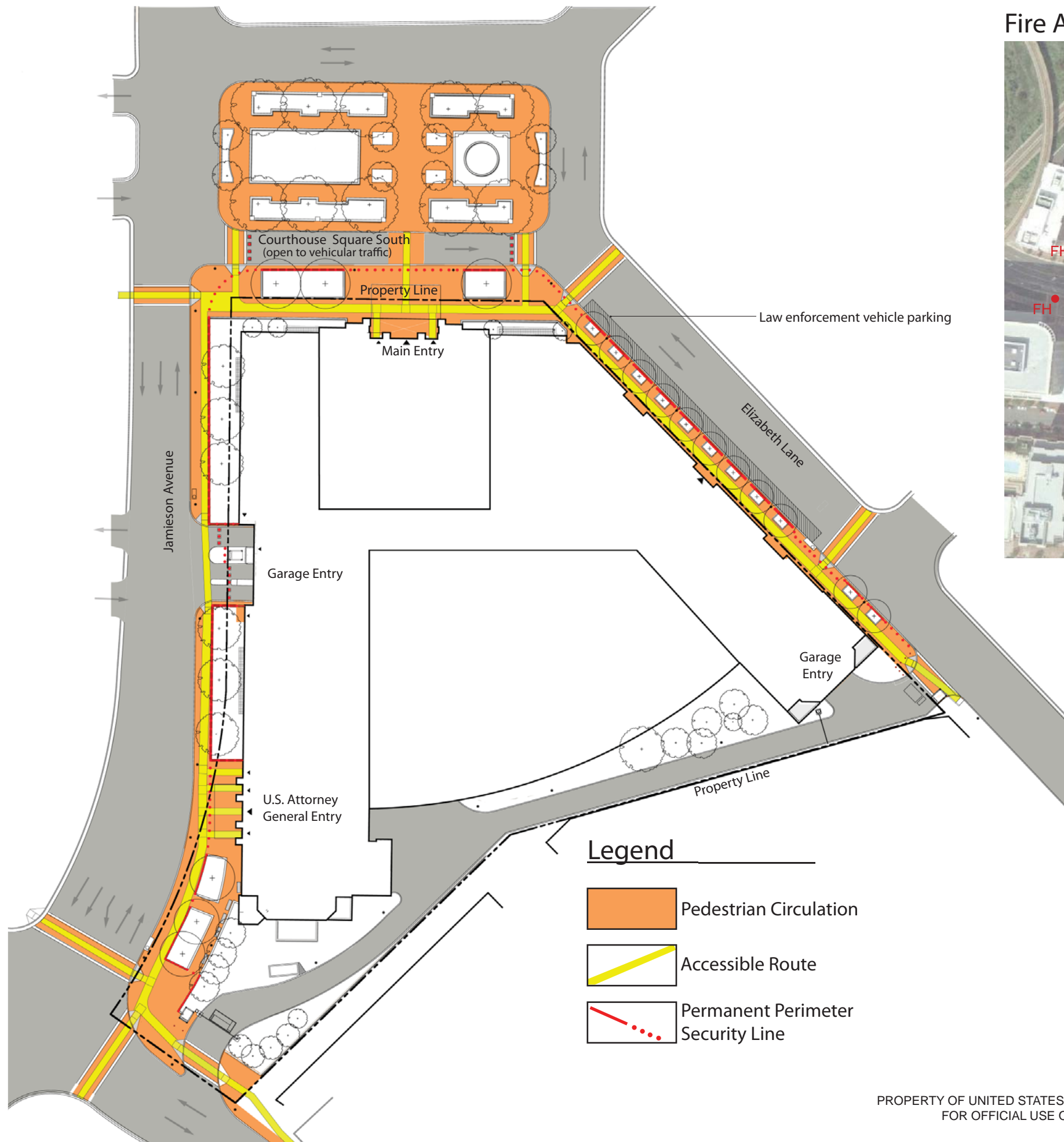


A. V. Bryan Courthouse Illustrative site plan

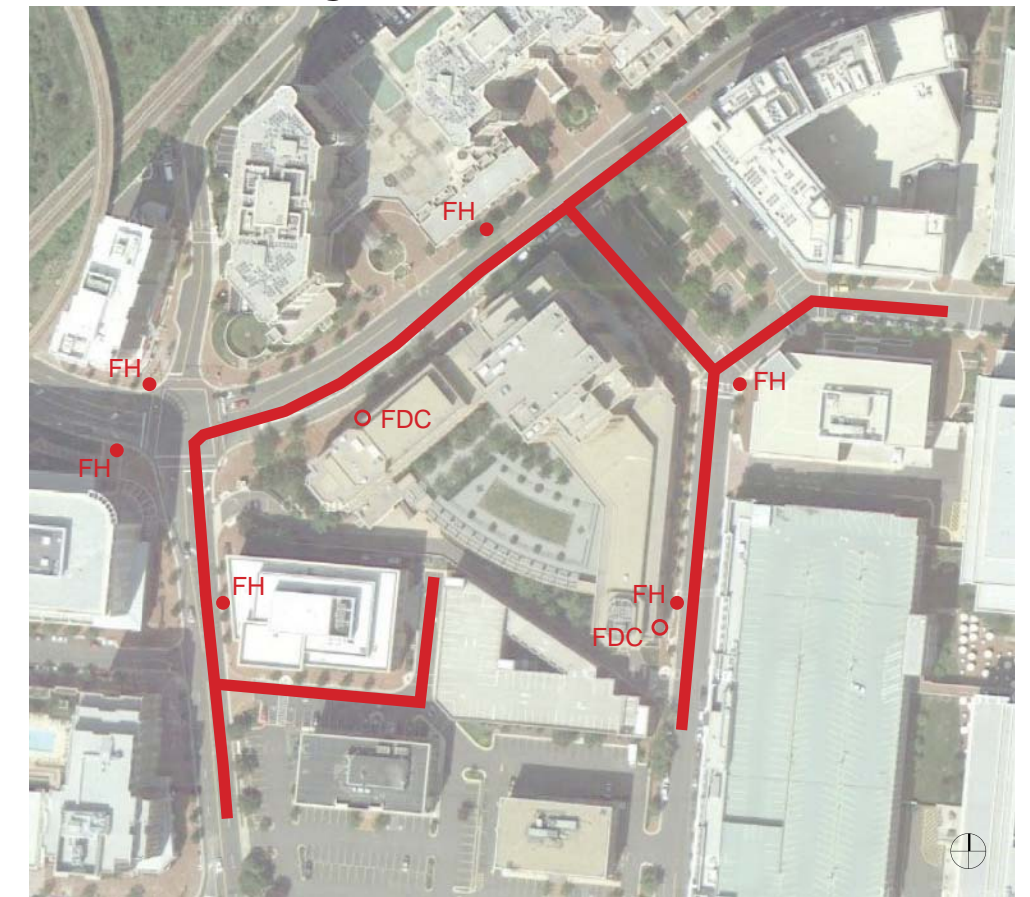
February, 2012

PROPERTY OF UNITED STATES GOVERNMENT
FOR OFFICIAL USE ONLY





Fire Access Diagram



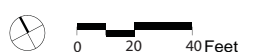
FDC: Fire Department Connection
FH: Fire Hydrant

Albert V. Bryan Courthouse

Perimeter Security Improvements

February, 2012

PROPERTY OF UNITED STATES GOVERNMENT
FOR OFFICIAL USE ONLY





Jamieson Avenue - Overall Elevation



Elizabeth Lane - Overall Elevation

A. V. Bryan Courthouse

Perimeter Security Improvements

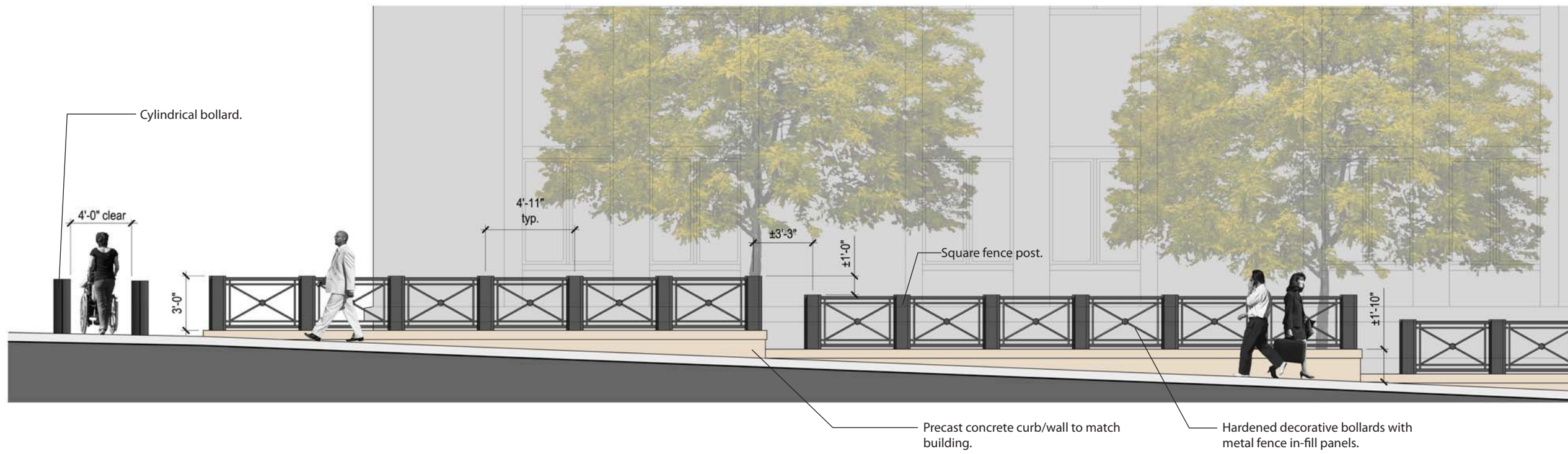
February, 2012

PROPERTY OF UNITED STATES GOVERNMENT
FOR OFFICIAL USE ONLY

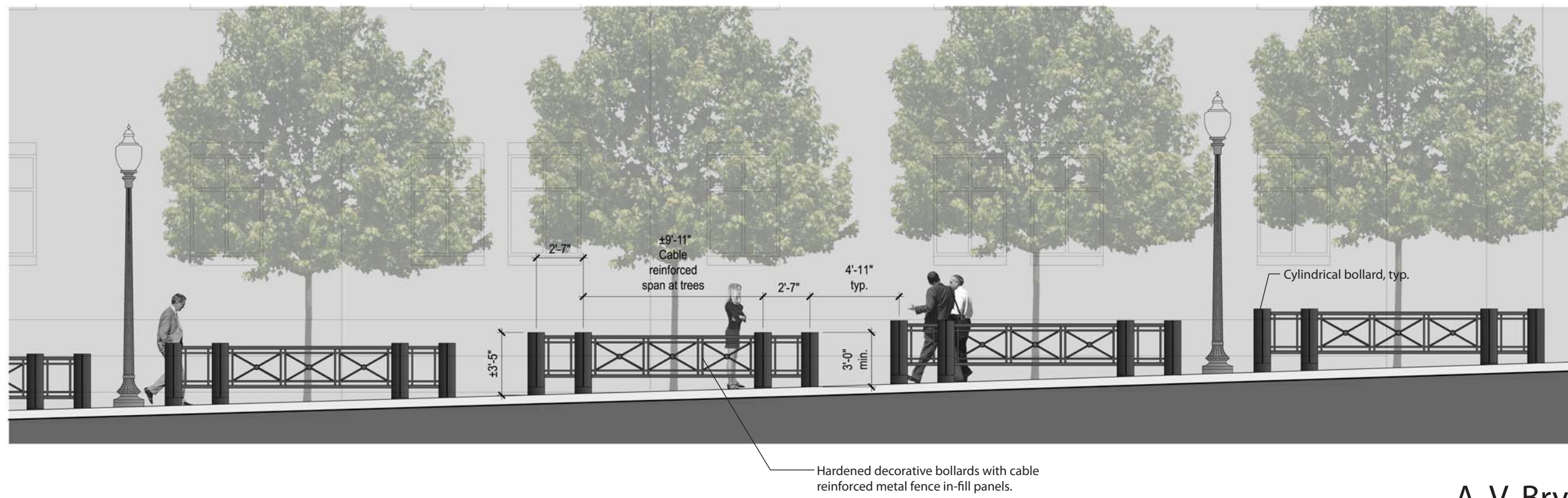


AECOM





Jamieson Avenue - Elevation Enlargement



Elizabeth Lane - Elevation Enlargement

A. V. Bryan Courthouse
Perimeter Security Improvements

February, 2012

PROPERTY OF UNITED STATES GOVERNMENT
FOR OFFICIAL USE ONLY



AECOM





Courthouse Square South- Elevation

0 4 8 Feet



Courthouse Square South - Elevation Enlargement

Precast concrete curb/wall to match building.

Hardened decorative bollards with metal fence in-fill panels.

0 2 4 Feet

A. V. Bryan Courthouse

Perimeter Security Improvements

February, 2012

PROPERTY OF UNITED STATES GOVERNMENT
FOR OFFICIAL USE ONLY





Courthouse Square South

A. V. Bryan Courthouse

Perimeter Security Improvements

February, 2012

PROPERTY OF UNITED STATES GOVERNMENT
FOR OFFICIAL USE ONLY





Jamieson Avenue

A. V. Bryan Courthouse

Perimeter Security Improvements

February, 2012

PROPERTY OF UNITED STATES GOVERNMENT
FOR OFFICIAL USE ONLY



AECOM