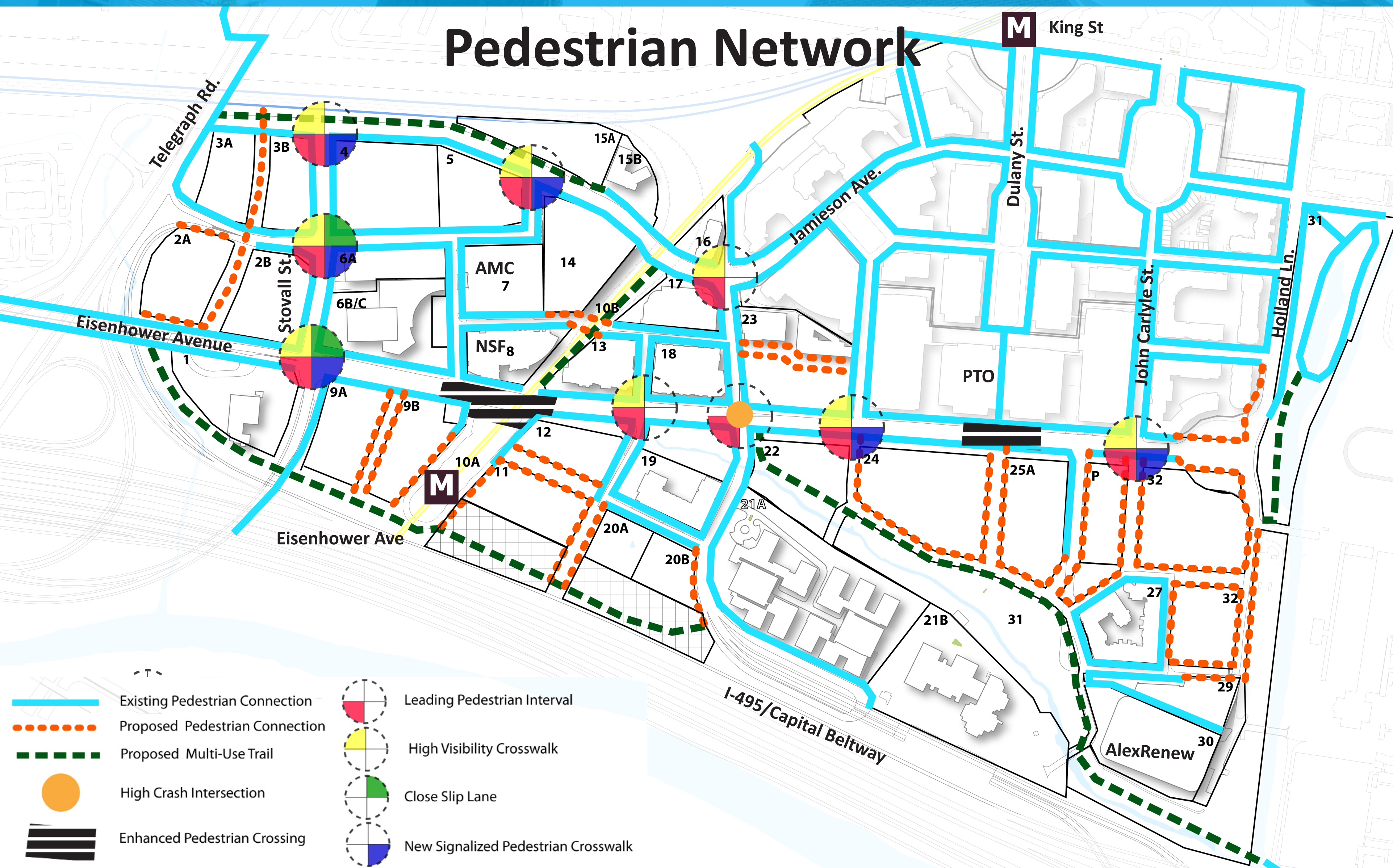
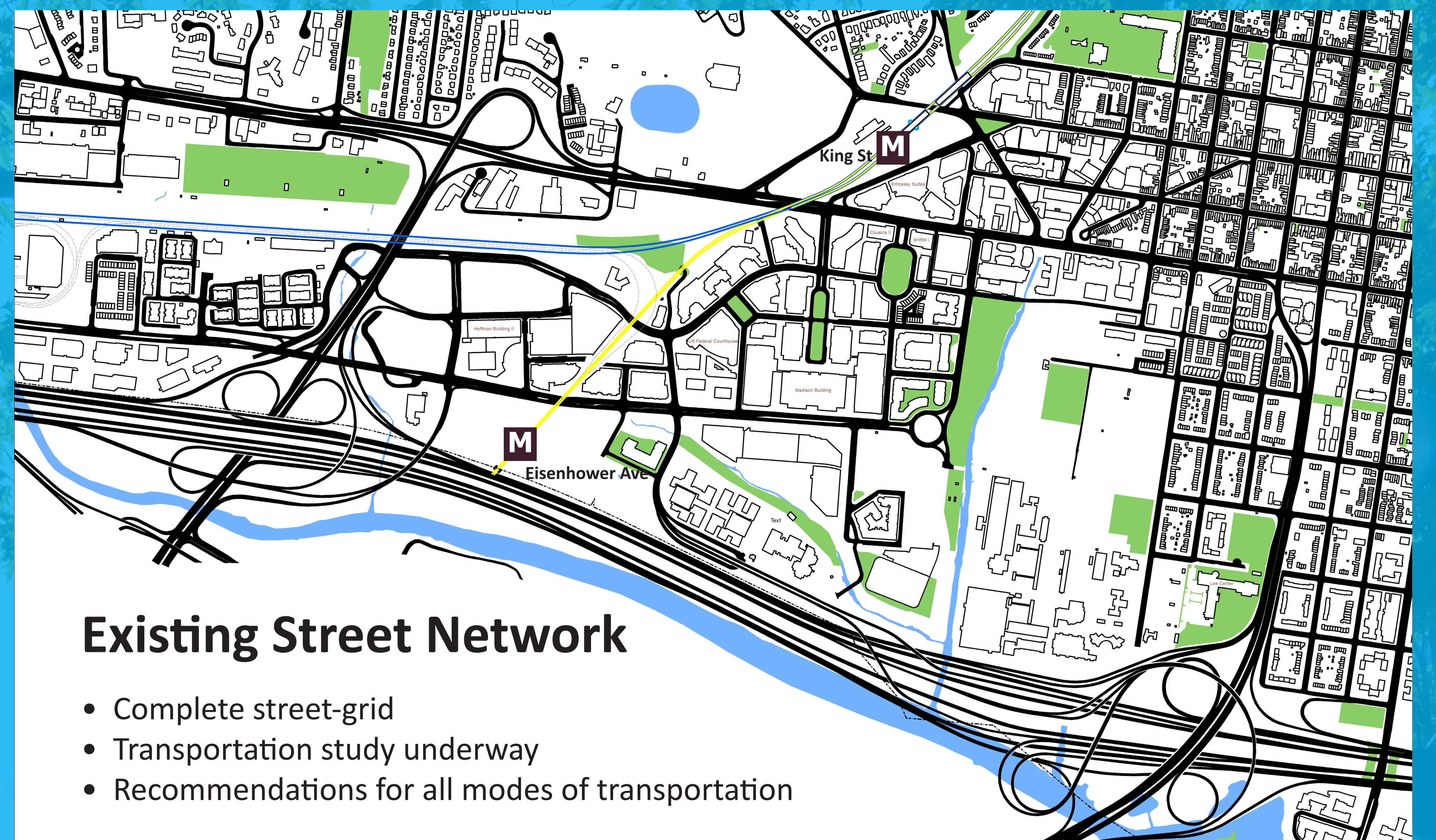
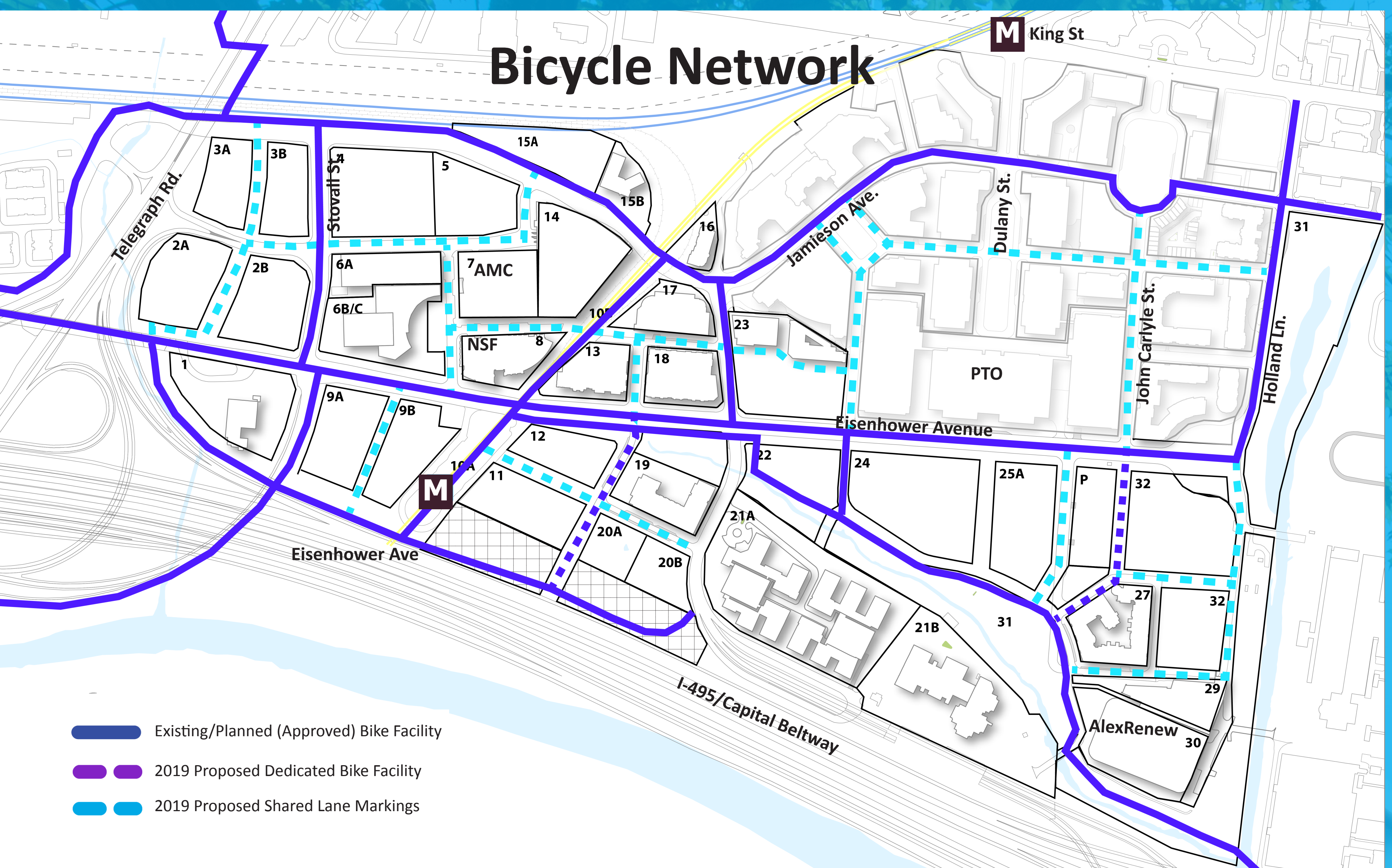


# Proposed Bike + Ped Network



## 2019 Plan Recommendations

- Land use and density designed to maximize benefits of Metrorail
- Explore potential northern Metrorail entrance
- Improve internal circulation with interconnected street grid
- Enhance pedestrian crossing at Metrorail station
- Upgrade pedestrian and bike facilities consistent with City policies
- Expand bike facilities within area and improve connections to adjacent neighborhoods
- Integrate bus transit
- Explore expanding and enhancing existing tunnel at Mill Road



Community Open House #3  
5.21.2019

eisenhower east