

# Historical Cohort Survival Rates

- Cohort survival rate tracks the number of students continuing from one grade to the next.
- By Region of Attending School
  - Variability among regions, More stability in upper elem. versus lower
- By Grade
  - Above 1.0 for 8-9 and 9-10, Lowest 11-12
- By Home School
  - Neighborhoods have grown differently FY2010-2013
  - Capacity excess on east and central & deficit on the west side
- By Individual Student
  - Majority are 2nd or 5th grade, minority & eligible for F/R lunch
- Further Work
  - August- continue tracking individual students: look at moves between FY2011-2012, individuals who are no longer in the system, new students to the system
  - Beyond- conduct same individual student analysis with additional years of data; use home school & individual analysis to create CSR to use in projections

Grade	2011	2012
K	118	121
1	110	110
Cohort Survival from K to 1 <sup>st</sup>		98%

7/18/2013 97

1

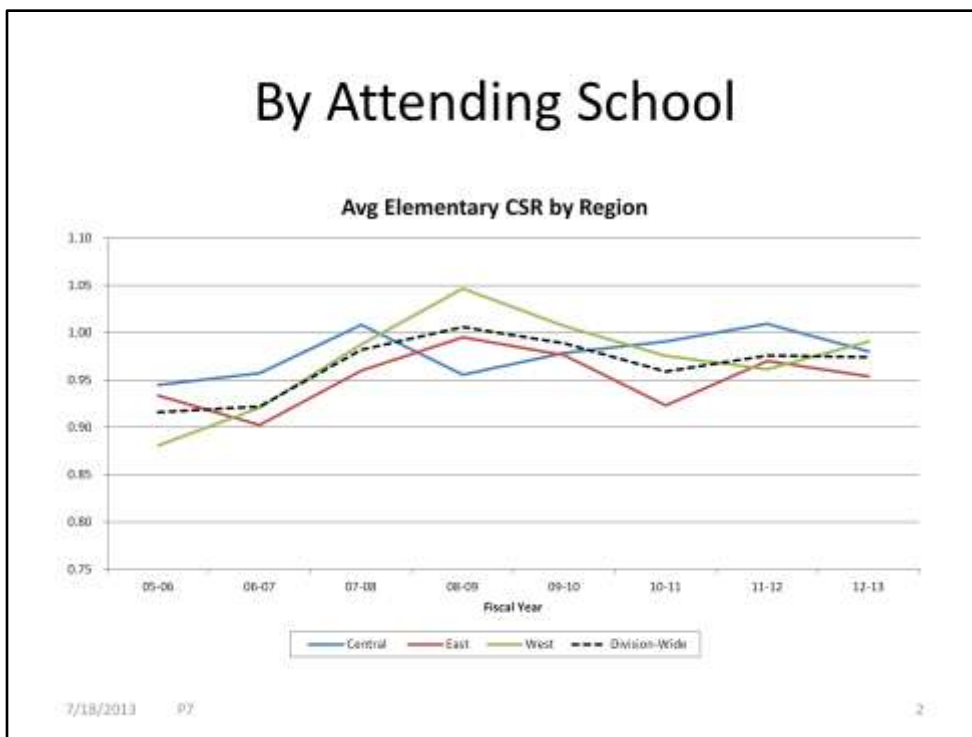
## Historical CSR

-Industry standard for enrollment projections

Info provided shows CSR 4 different ways:

1. Attending School- averages by region, lower & upper elementary, MS & HS
2. By Grade- elementary, MS & HS
3. By Home or Neighborhood School at elementary level
4. First 3 are by aggregate numbers, then #4 is Individual elementary school student by region

# By Attending School

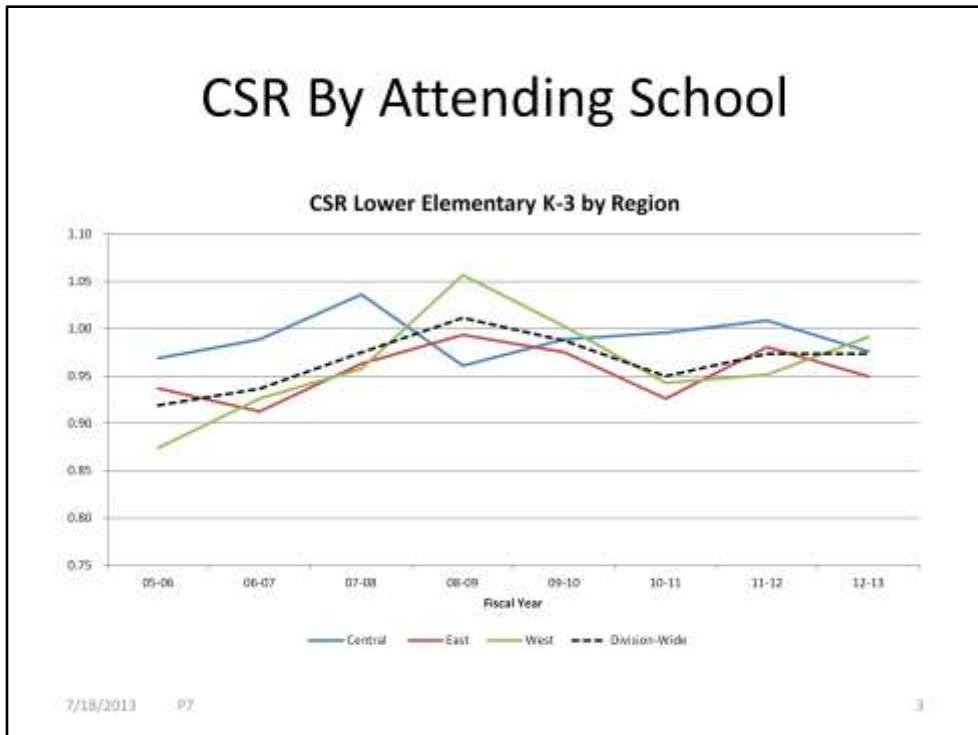


-Shows average CSR, less than 1 means losing kids, above 1 means gaining kids

-Averaged by region + division-wide average

-Division average peaked in 08/09 which is SY07/08

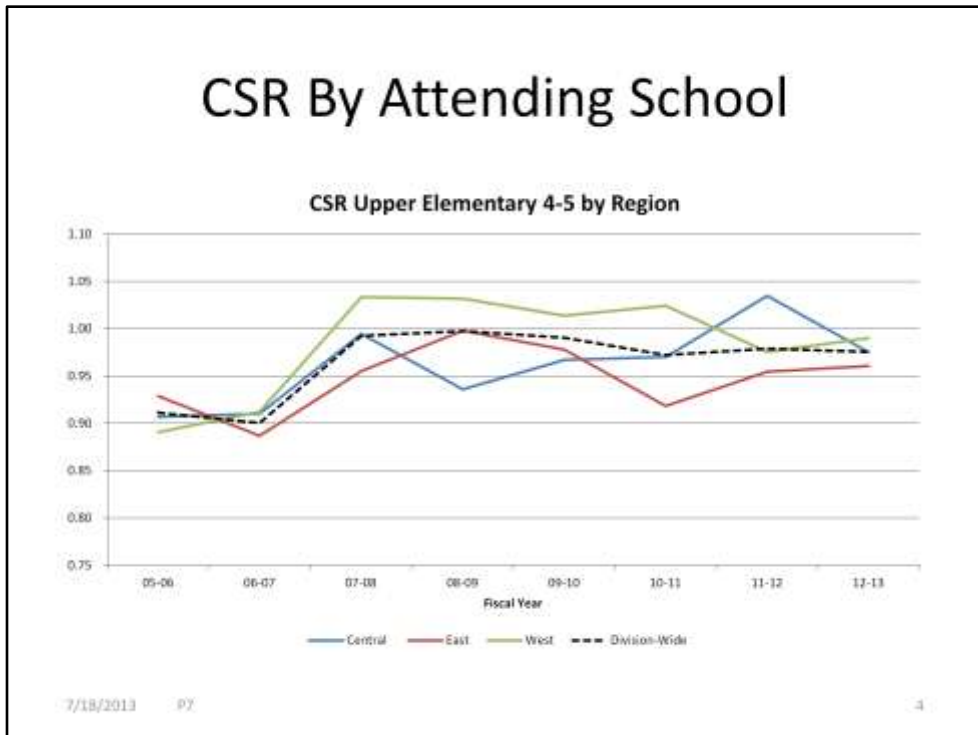
# CSR By Attending School



Lower Elementary: K-1, 1-2, 2-3

See volatility and change in lower elementary when compared to upper elementary on next page

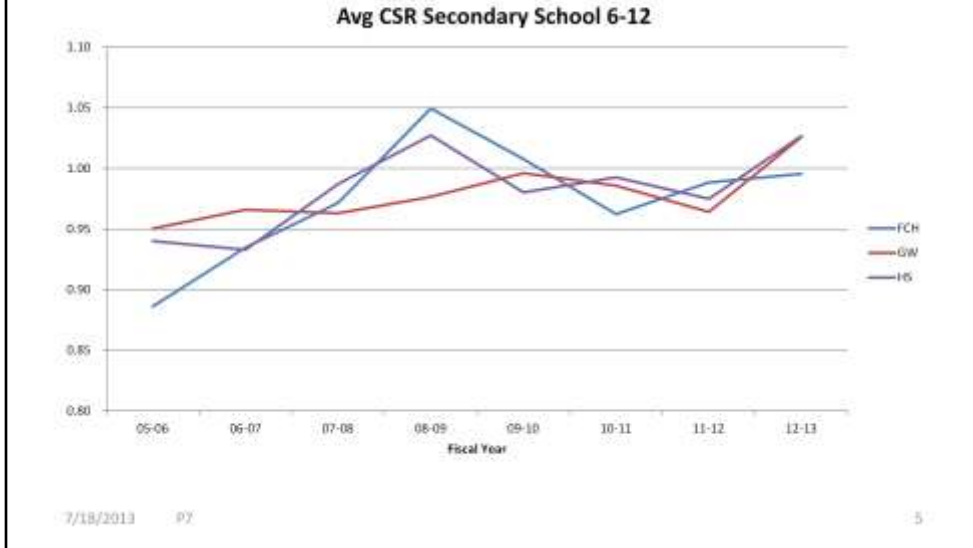
# CSR By Attending School



Upper Elementary: 3-4,4-5

Gaining students on west side for several years until a couple years ago but fairly stable since FY2007 compared to younger students

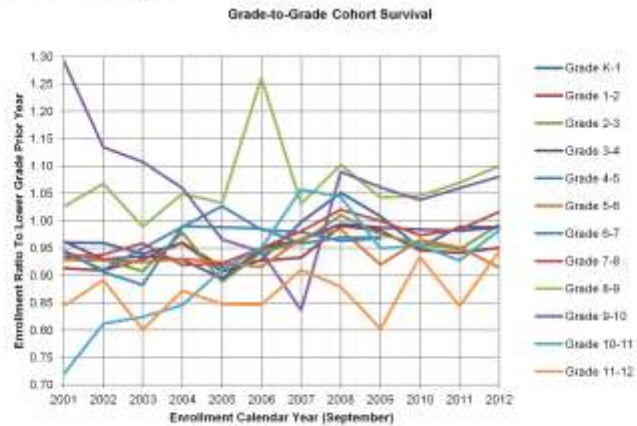
# CSR By Attending School



Average CSR between FCH, GW & HS

# CSR By Grade

- Division-Wide



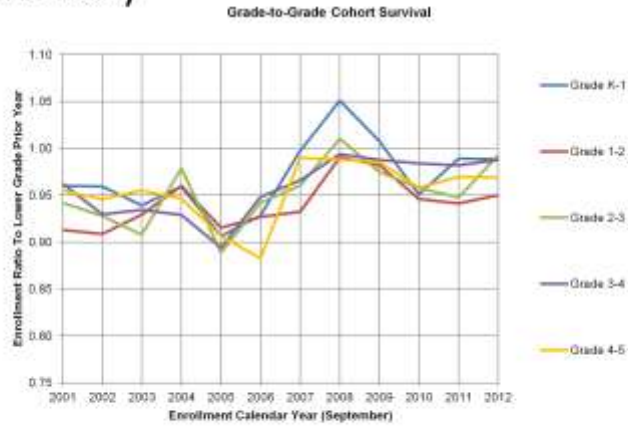
7/18/2013 97

6

- Green line at 1.03 is 8-9 up because of private school as a theory
- purple line at 1.3 is 9-10, fell until 2007, back above 1 = more kids
- Orange line at .85 is 11-12 is lowest CSR of all grades

# CSR By Grade

- Elementary



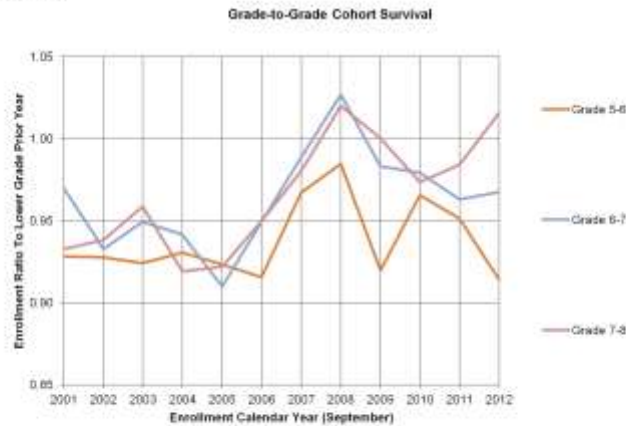
7/18/2013 97

7

-Change starting in 2007 at all levels for the most part

# CSR By Grade

- Middle



7/18/2013 97

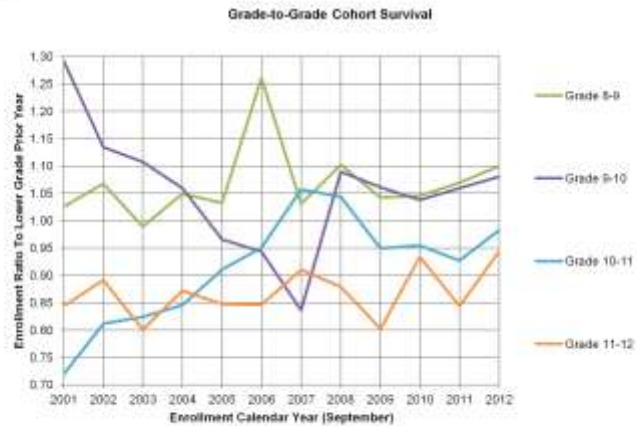
2012 7-8 is adding kids ex: more 8<sup>th</sup> graders in 2012 than 7<sup>th</sup> graders in 2011, only happened twice in study period so we'll see if this is blip or if the trend continues.

Wide swings but have never seen more 6<sup>th</sup> graders than 5<sup>th</sup> graders supporting our theory that families move out of Alexandria as their children get older.= a trend to review with our neighbors to see if Arlington, Fairfax see similar trends



# CSR By Grade

- High



7/18/2013 97

9

8-9 almost always above 1

9-10 big swing but above 1 last 5 years

11-12 calculated differently from the drop-out rate because that follows actual children but unique ID.

# Neighborhood School

## # Neighborhood Students vs. Students Enrolled

- Number of neighborhood students calculated based on home address, not school attended
- Compared to number of students enrolled

	FY2010			FY2011			FY2012			FY2013		
	Neighborhood Count	Actual K-5 Enrollm.	Read Enrollm.	Neighborhood Count	Actual K-5 Enrollm.	Read Enrollm.	Neighborhood Count	Actual K-5 Enrollm.	Read Enrollm.	Neighborhood Count	Actual K-5 Enrollm.	Read Enrollm.
Central	1,338	1,338	93.8%	1,270	1,370	92.0%	1,340	1,483	90.4%	1,313	1,572	89.9%
East	1,830	1,935	94.0%	1,940	1,969	97.7%	2,094	2,104	99.5%	2,145	2,204	96.2%
West	3,015	2,910	96.5%	3,187	3,113	97.4%	3,415	3,205	93.8%	3,533	3,425	96.8%
No address or not in area	140			108			14			24		
Total	6,323	6,223	100.0%	6,514	6,461	100.0%	6,863	6,796	100.0%	7,117	7,220	99.9%

7/18/2013 97

10

-Compares number of students living in an attendance area (neighborhood) versus those enrollment in those schools  
Elementary Level Only

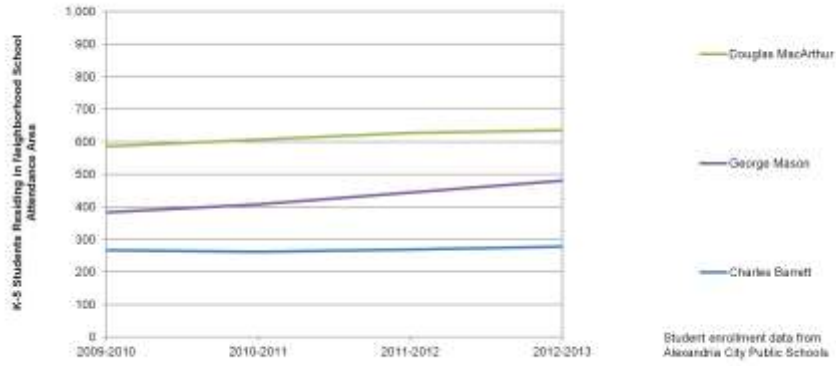
School enrollment % compared to neighborhood students

Green & yellow mean more student enrollment than neighborhood students, less neighborhood #s in central than east  
See change over time, Central enrollment has increased but % decr.  
Compared to # of neighborhood students

West Region is red because more neighborhood students than students enrollment in west schools

# # Neighborhood Students Change FY2010-2013

- Central Region



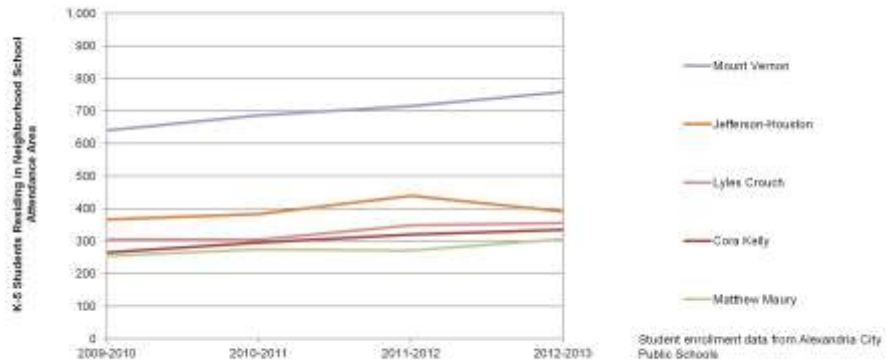
7/18/2013 PZ

11

Compares actual numbers by neighborhood and can see change over time

# # Neighborhood Students Change FY2010-2013

- East Region



Student enrollment data from Alexandria City Public Schools

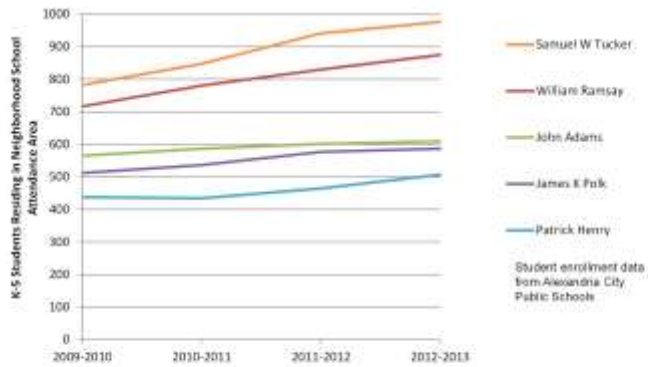
7/18/2013 PZ

12

All increased 2009-2012

# # Neighborhood Students Change FY2010-2013

- West Region



7/18/2013 97

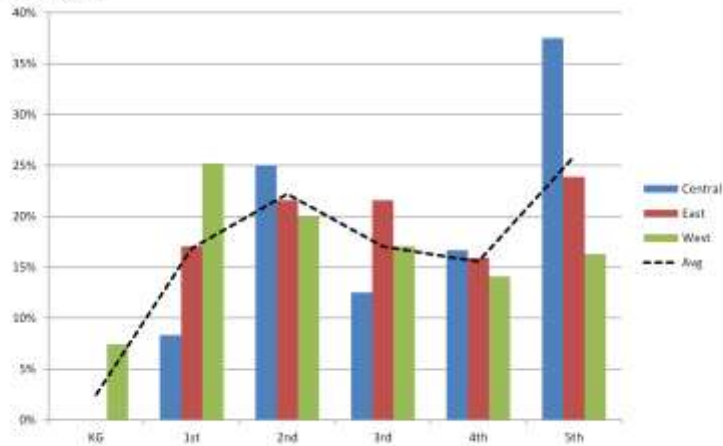
13

Biggest increase at ST & WR

-project for the future is to break these down by grade to apply to projections to see neighborhood's true need

## Individual Students Moved FY2012-2013

- Grade



7/18/2013 97

14

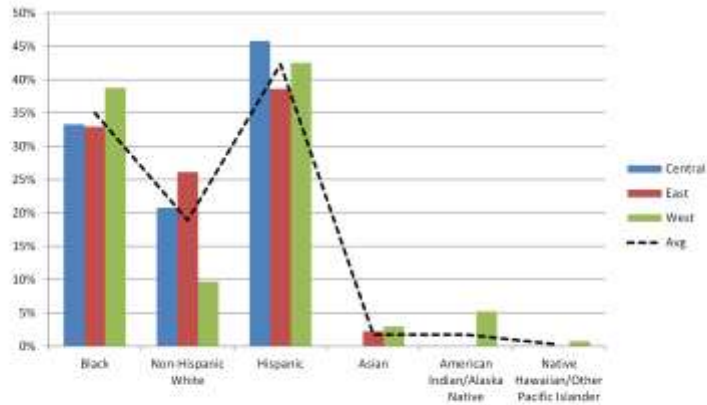
- Individual elementary level students who moved between SY11 and 12
- 3 questions- grade, race/ethnicity and F/R lunch status
- Doesn't include new students or students who were enrolled in SY11 and didn't return in SY12
- broken down by region

So of those who moved... what grade were they going to be in SY12?

Highest in 2<sup>nd</sup> & 5<sup>th</sup> grade

# Individual Students Moved FY2012-2013

- Race/Ethnicity



7/18/2013 97

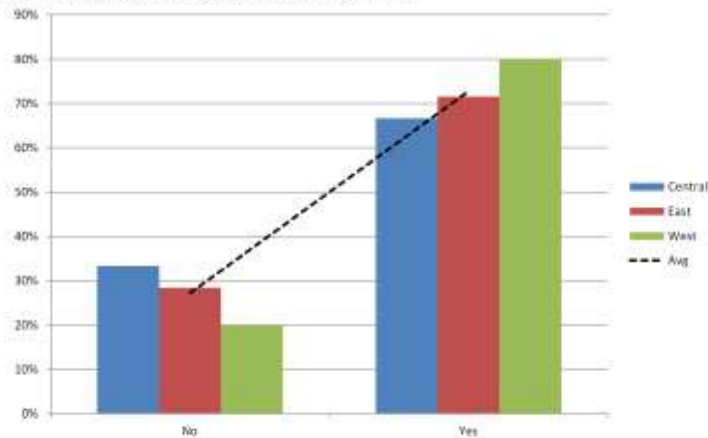
15

So of those who moved... what race/ethnicity were they?

Division-wide average  
Over 40% Hispanic  
35% Black

## Individual Students Moved FY2012-2013

- Free and Reduced Lunch



7/18/2013 97

16

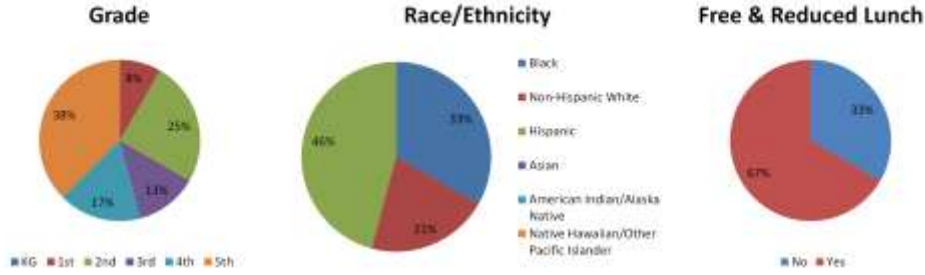
So of those who moved... how many qualified for Free and Reduced lunch?  
-USDA program that students have to income qualify for, proxy for economic status

Average of 70% qualified for F/R lunch



# Individual Students Moved FY2012-2013

- Central



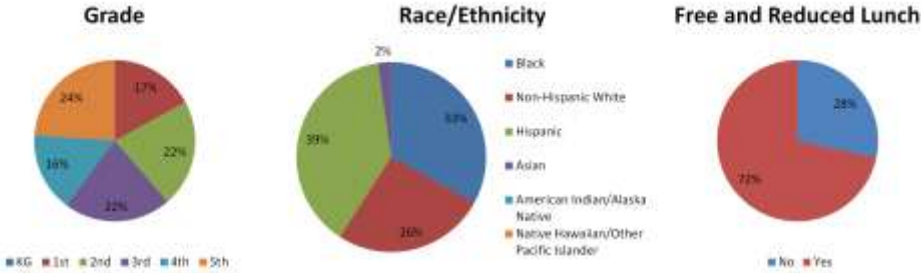
7/18/2013 97

17

Shows all three factors by region

# Individual Students Moved FY2012-2013

- East



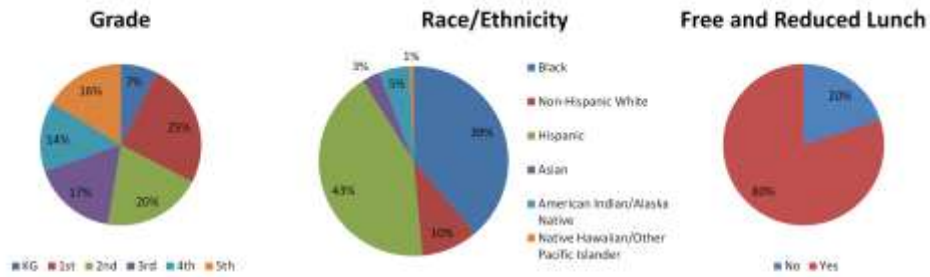
7/18/2013 97

18

Shows all three factors by region

# Individual Students Moved FY2012-2013

- West



7/18/2013 97

19

Shows all three factors by region

-next steps for August

1. Similar data for moves between FY11-12
2. Generate similar data on new students & non-returning students
3. Use that information to calculate CSR

-beyond

1. Add years of analysis as we receive the data