

City of Alexandria Analysis of 2020 Census Redistricting Data (Public Law 94-171) Summary File

Prepared by the Department of Planning and Zoning Demographer, Margaret Curran and
Information and Technology Services Principal GIS Analyst, James Bryant

August 12, 2021

Summary

- The City's 2020 population is 159,467
- The City gained 19,501 residents over the past decade with a 1.39% annual growth rate
- The City's population increased by 13.9% over the past decade in comparison to Virginia at 7.9%
- The Hispanic or Latino community had disproportionate growth with an increase of 30%, from 22,524 to 29,372
- The city increased its housing unit count by 8,103 with an average household size of 2.11, an increase from 2010 avg household size of 2.06

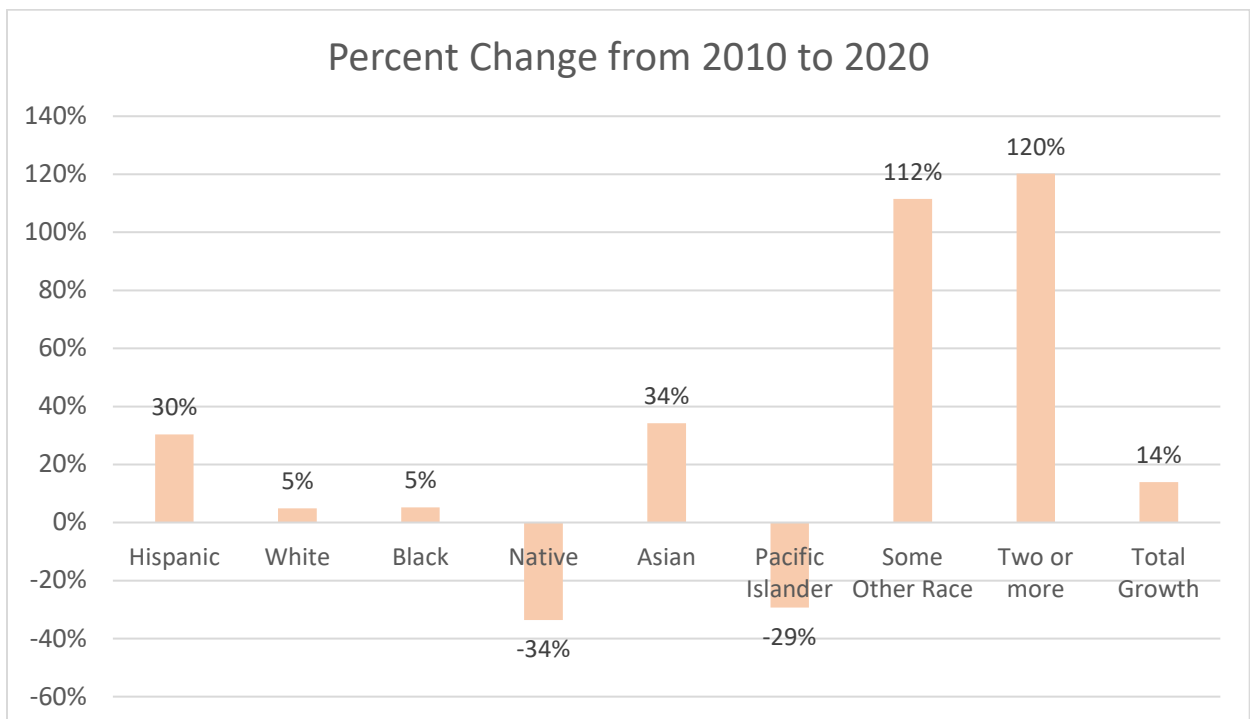
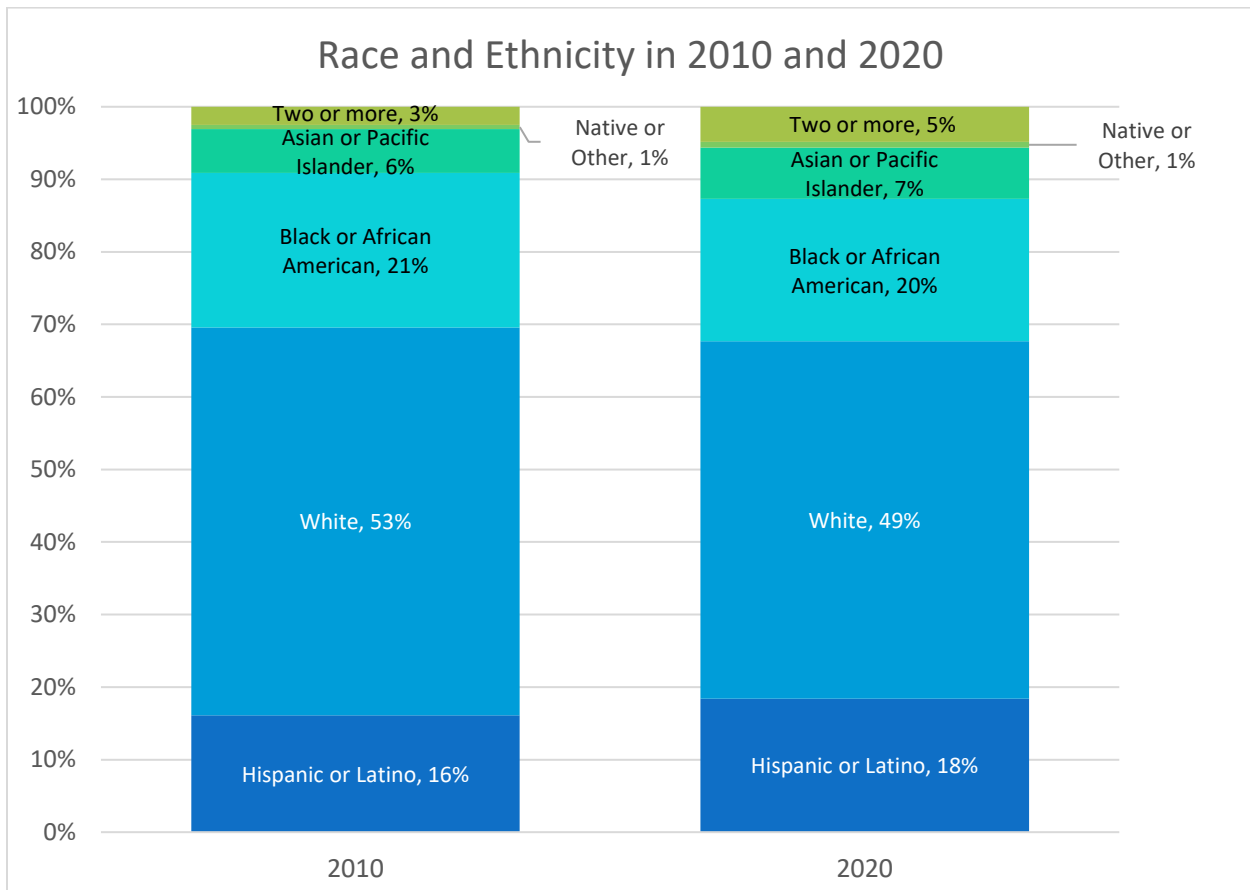
Race and Ethnicity – Summary Table

Race or Ethnicity	2010		2020		2010-2020	
	Count	Percent	Count	Percent	Percent Change	Percent Difference
Hispanic or Latino	22,524	16.1%	29,372	18.4%	30.4%	2.3%
Not Hispanic or Latino:	117,442	83.9%	130,095	81.6%	10.8%	-2.3%
Population of one race:	113,928	81.4%	122,358	76.7%	7.4%	-4.7%
White	74,878	53.5%	78,519	49.2%	4.9%	-4.3%
Black or African American	29,778	21.3%	31,314	19.6%	5.2%	-1.6%
Native American	327	0.2%	217	0.1%	-33.6%	-0.1%
Asian	8,351	6.0%	11,205	7.0%	34.2%	1.1%
Pacific Islander	109	0.1%	77	0.0%	-29.4%	0.0%
Some Other Race	485	0.3%	1,026	0.6%	111.5%	0.3%
Two or more races:	3,514	2.5%	7,737	4.9%	120.2%	2.3%
Total:	139,966		159,467		13.9%	

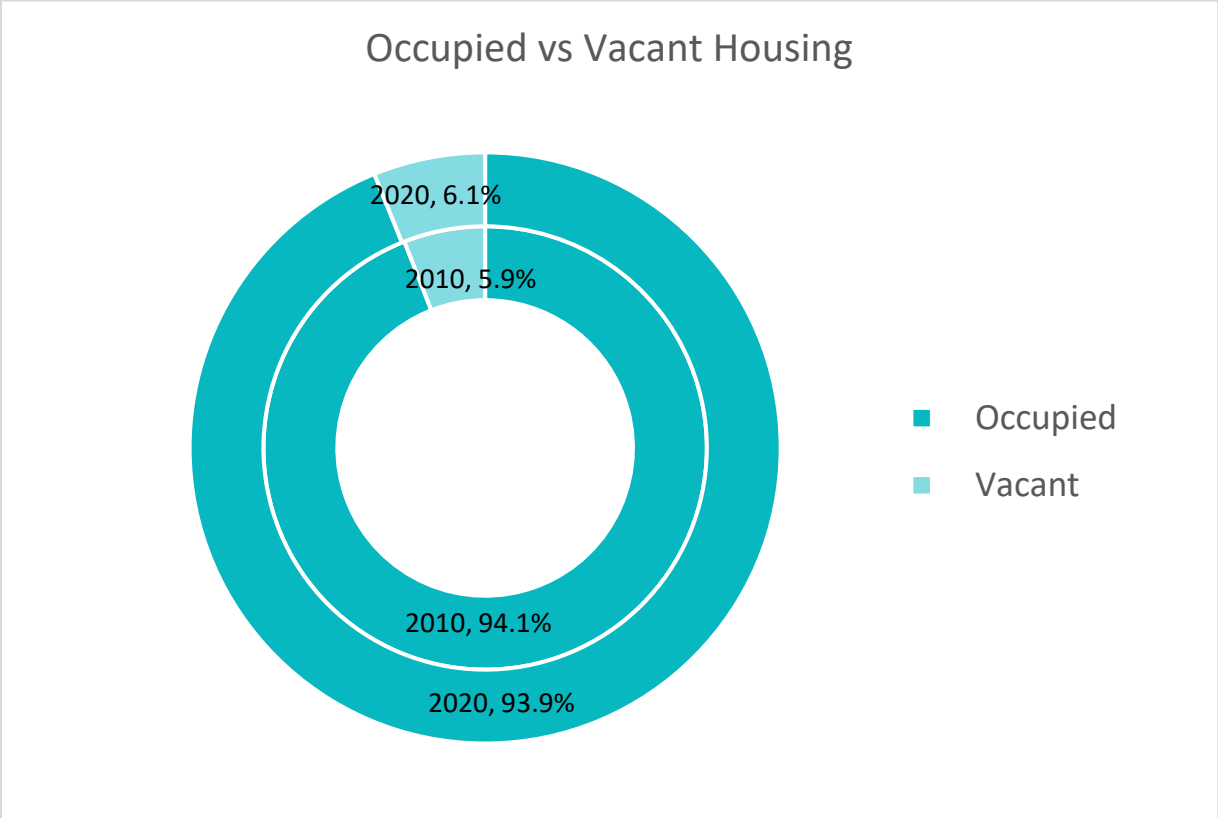
Housing – Summary Table

Housing Units	2010		2020		2010-2020	
	Count	Percent	Count	Percent	Percent Change	Percent Change
Occupied	68,082	94.1%	75,555	93.9%	11.0%	-0.2%
Vacant	4,294	5.9%	4,924	6.1%	14.7%	0.2%
Total:	72,376		80,479		11.2%	

Race and Ethnicity – Charts

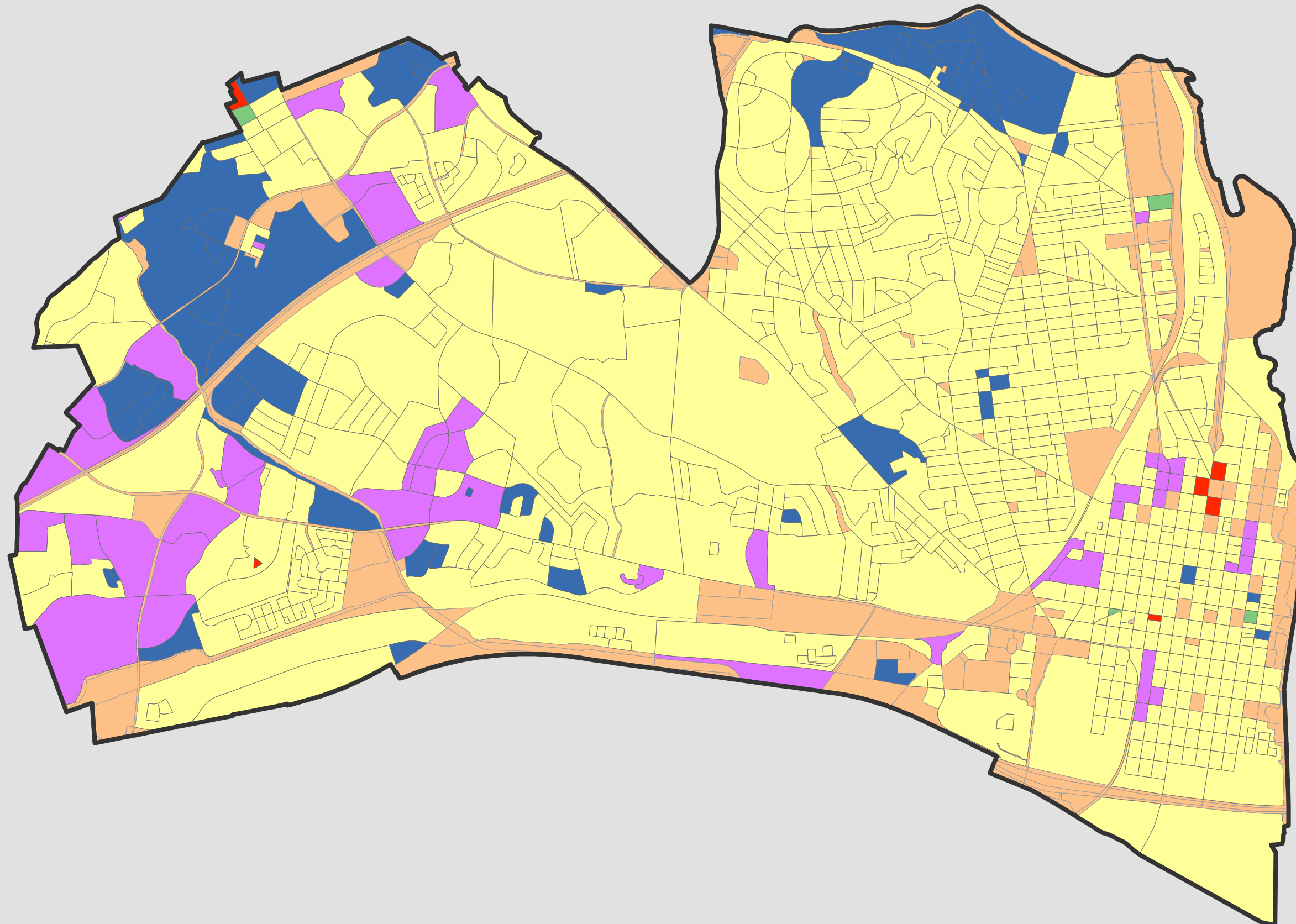


Housing - Charts



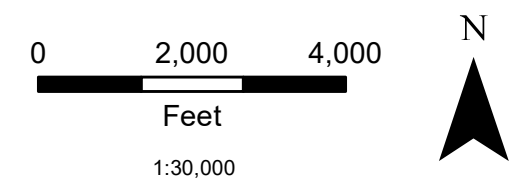
Population by Race or Ethnicity

Year 2020 Blocks



Majority Race/Ethnicity at Each Block

-  Asian
-  Black or African American alone
-  Hispanic or Latino
-  Population of two or more races
-  Area of No Population
-  White alone



This map was produced by the GIS Division of the Department of ITS, City of Alexandria, Virginia

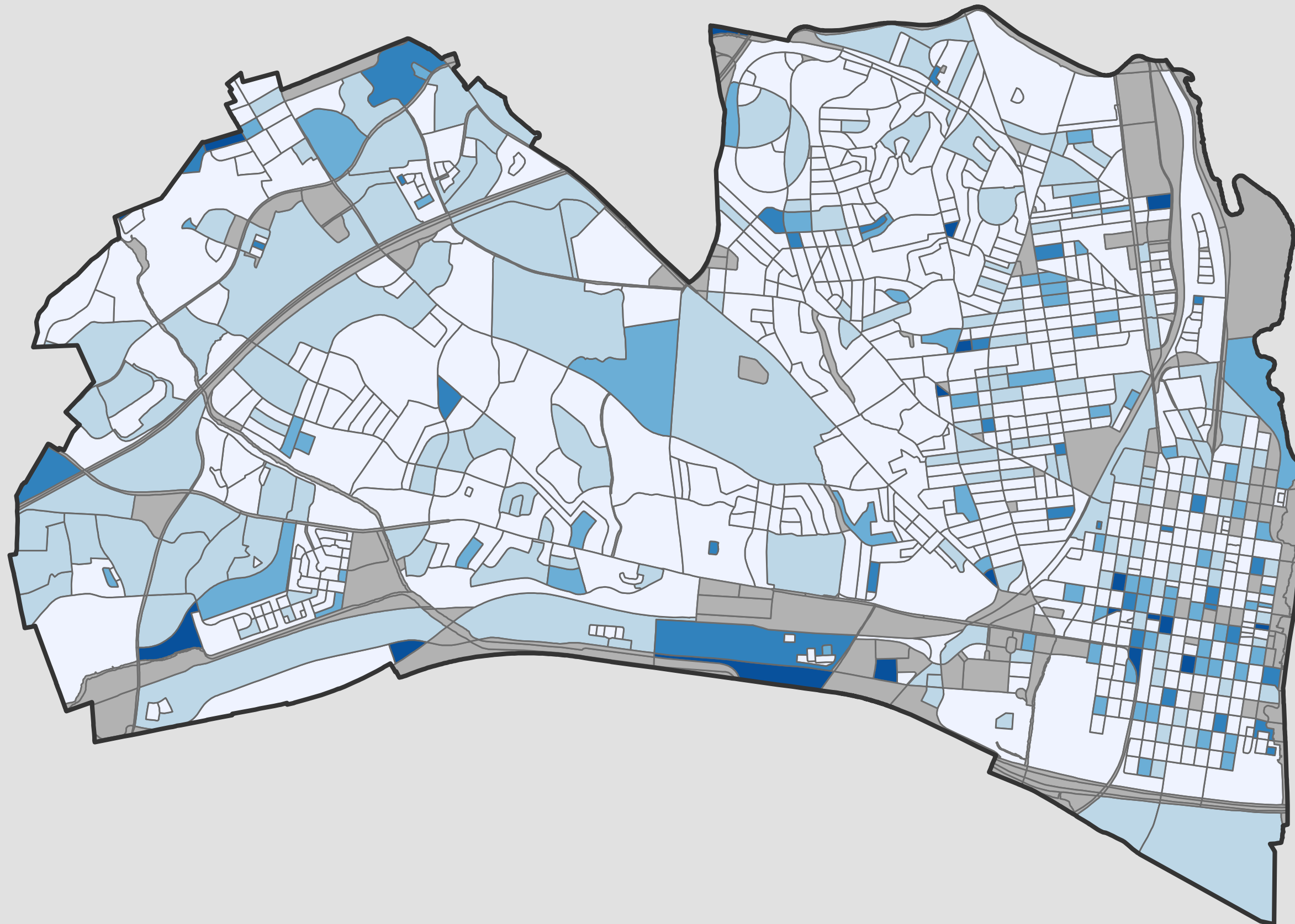
Mapping Standards:
Coordinate System - NAD83 State Plane Virginia North
Projection - Lambert Conformal Conic
Map Units - Feet

The maps provided hereunder are provided "as is" and the City expressly disclaims all warranties, UCC and otherwise, express or implied, including warranties as to accuracy of the maps and merchantability and fitness for a particular purpose, and further expressly disclaims responsibility for all incidental, consequential or special damages arising out of or in connection with the use or performance of the maps.

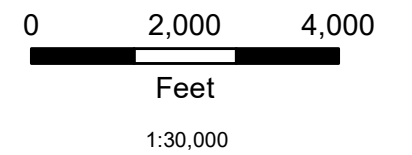
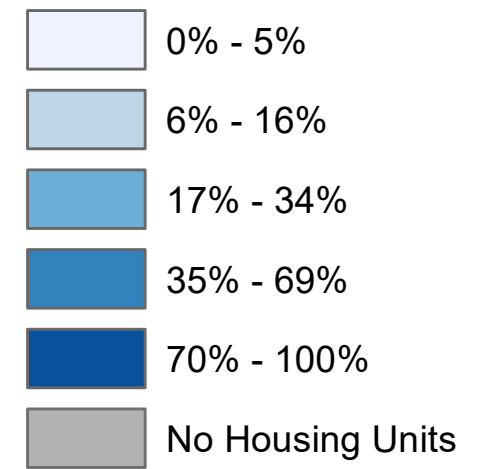


Vacant Housing Units

Year 2020 Blocks



Percent of Vacant Units



This map was produced by the GIS Division of the Department of ITS, City of Alexandria, Virginia

Mapping Standards:
Coordinate System - NAD83 State Plane Virginia North
Projection - Lambert Conformal Conic
Map Units - Feet

The maps provided hereunder are provided "as is" and the City expressly disclaims all warranties, UCC and otherwise, express or implied, including warranties as to accuracy of the maps and merchantability and fitness for a particular purpose, and further expressly disclaims responsibility for all incidental, consequential or special damages arising out of or in connection with the use or performance of the maps.