

# Concept A

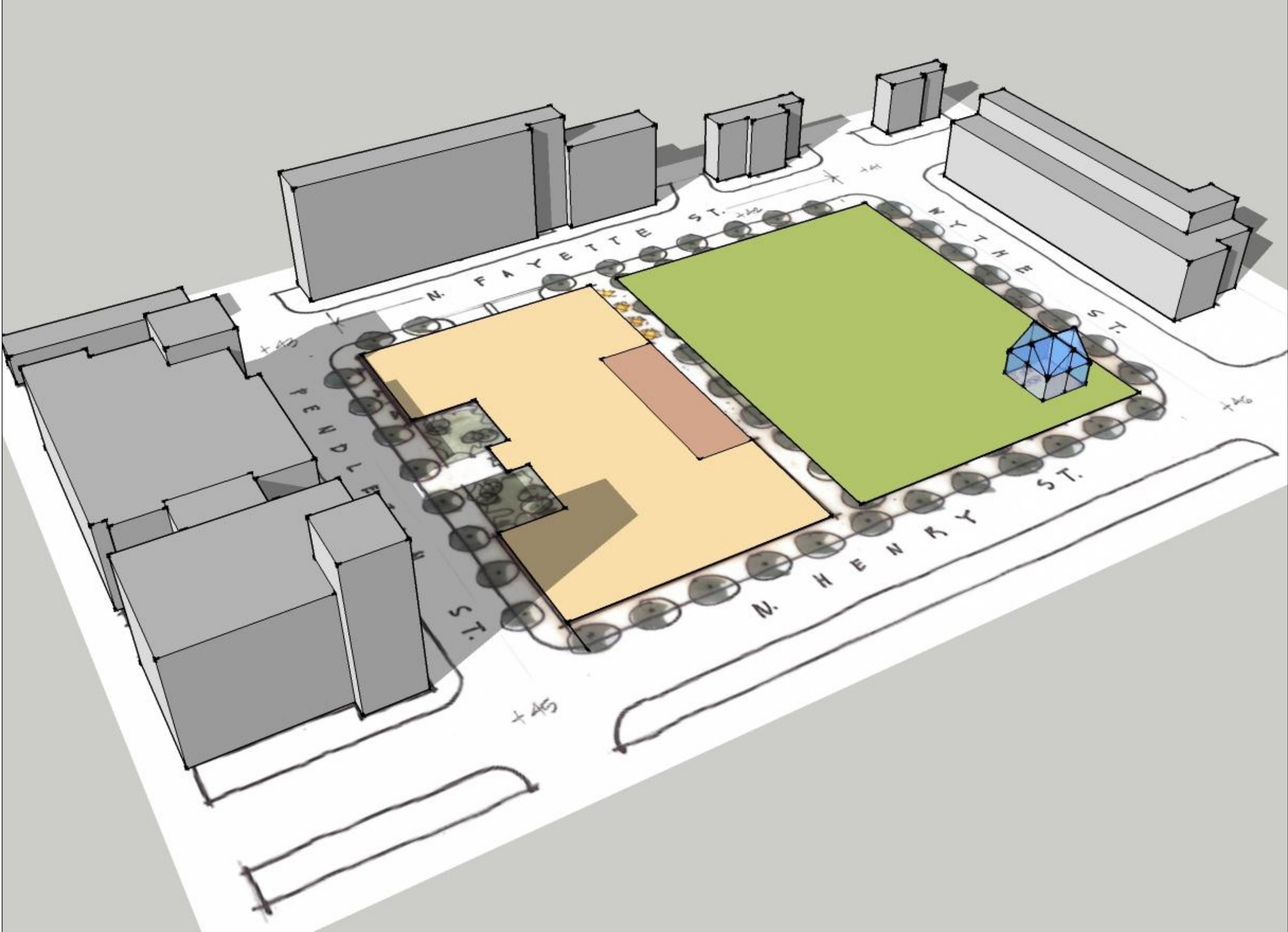


# Concept B

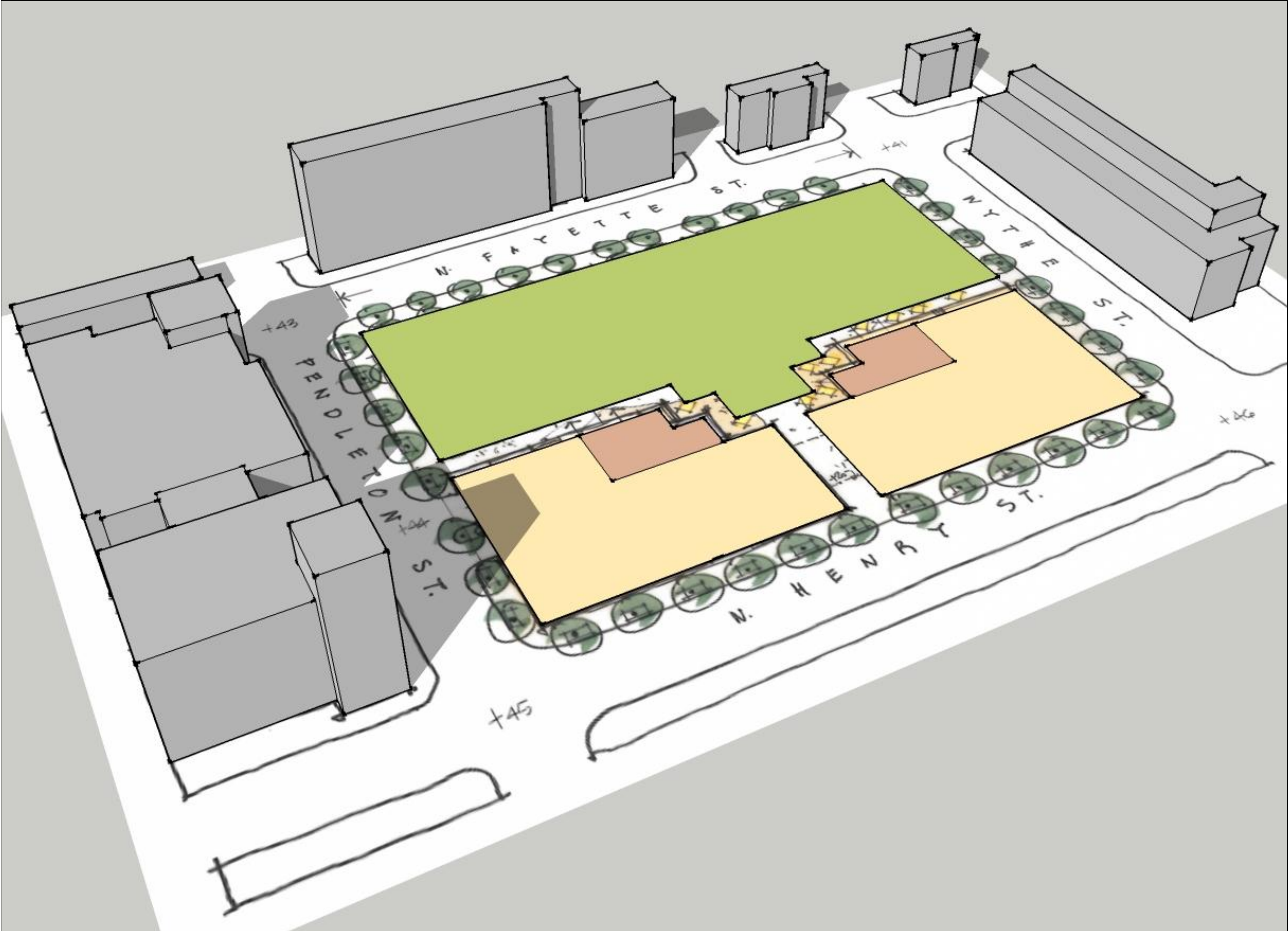




# Concept C



# Concept D





# Park Configuration Options

- Is park phasing addressed?
- Does the option create an Interim Park or Phase 1 Park?
- Should the existing building remain (in whole or part) or be demolished?
- What is the impact of solar orientation?
- What is the relationship of the park to existing and proposed buildings?
- Does the option create a well-defined separation between public and private zones?
- What is the park's visibility and access to/from Route 1?
- Does the option buffer the traffic and street noise of Route 1?
- Does the option impact your feelings or perception of public safety?
- Are there any impacts to park programming possibilities?