

PRINCESS

FAYETTE

8'-9' Sidewalk width' (avg)

8' Sidewalk width' (min)

36'

MATCH EXISTING CURB & GUTTER

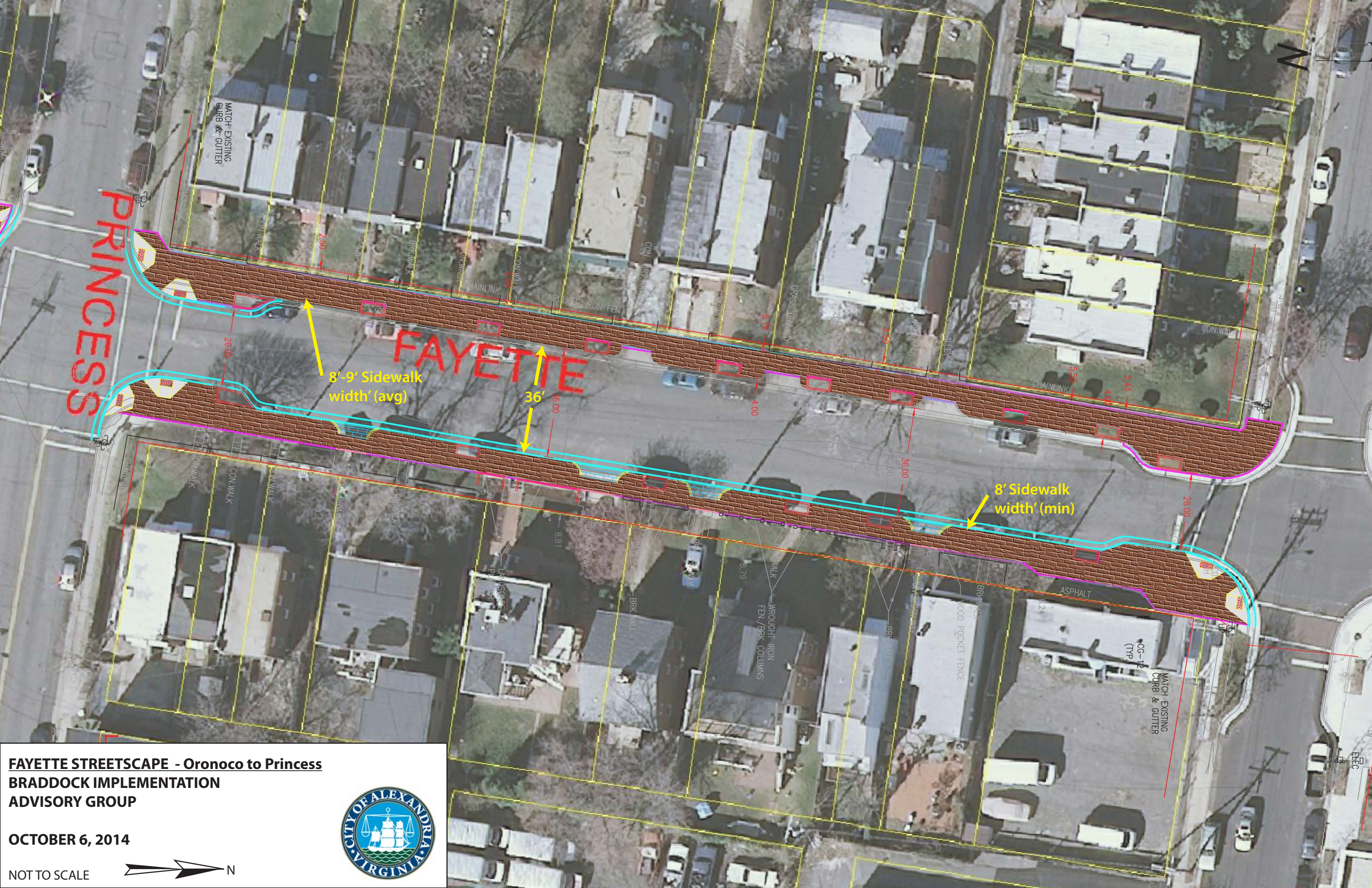
MATCH EXISTING CURB & GUTTER

N

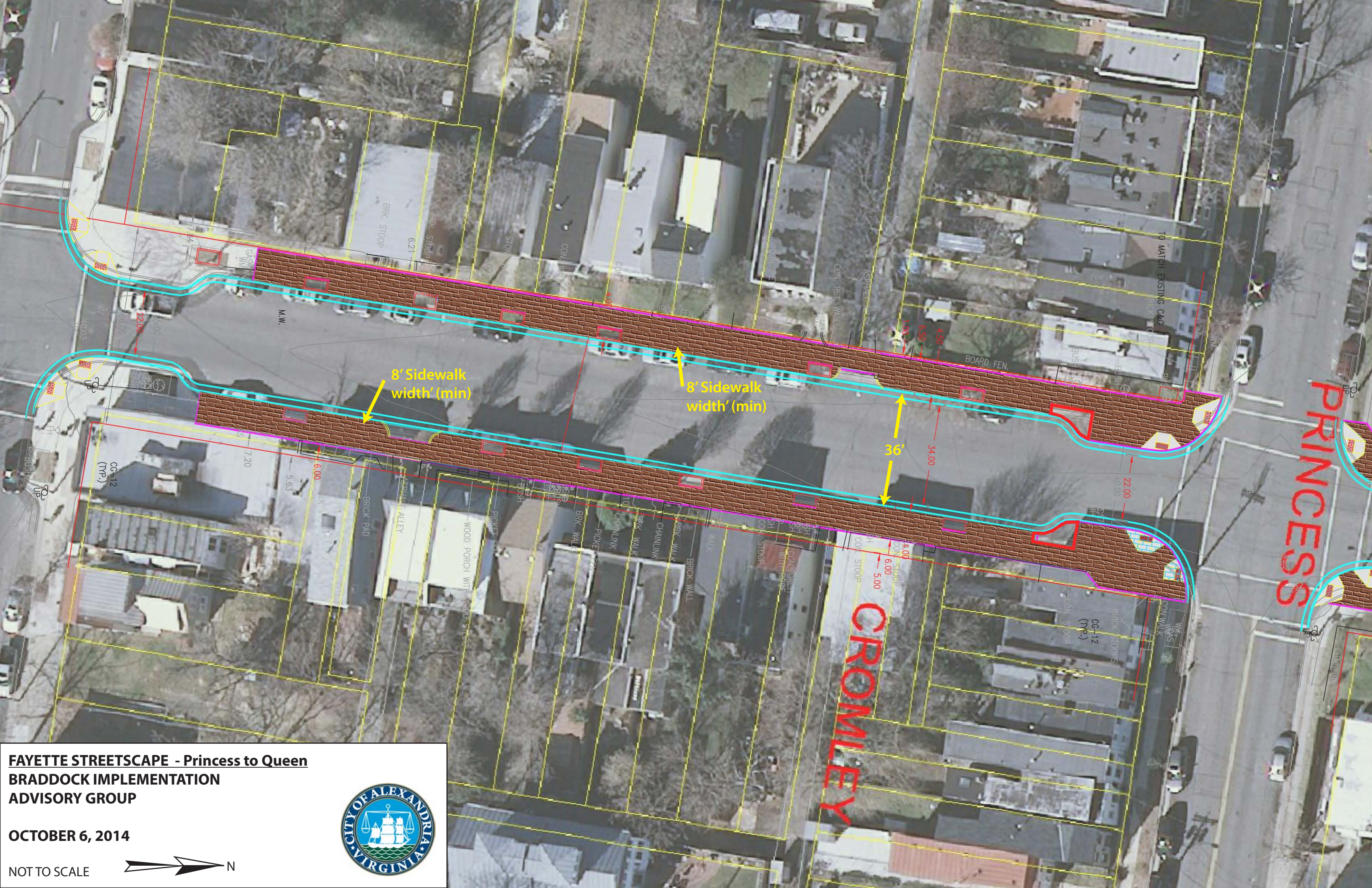
**FAYETTE STREETScape - Oronoco to Princess  
BRADDOCK IMPLEMENTATION  
ADVISORY GROUP**

**OCTOBER 6, 2014**

NOT TO SCALE







PRINCESS

CROMLEY

8' Sidewalk width' (min)

8' Sidewalk width' (min)

36'

BRK STOOP

BRK STOOP

STON

CON. WALL

CON.

CON.

CON.

CON.

CON.

CON.

CON.

CON.

CON.

CON.

CON.

CON.

CON.

CON.

CON.

CON.

CON.

CON.

CON.

CON.

CON.

CON.

CON.

CON.

CON.

CON.

CON.

CON.

GAS

W

W

W

W

W

W

W

W

W

W

W

W

W

W

W

W

W

W

W

W

W

W

W

W

W

W

W

W

W

W

W

W

W

W

W

W

W

W

W

W

W

W

W

W

W

CG-12 (TP)

CG-12 (TP)

CG-12 (TP)

CG-12 (TP)

CG-12 (TP)

CG-12 (TP)

CG-12 (TP)

CG-12 (TP)

CG-12 (TP)

CG-12 (TP)

CG-12 (TP)

CG-12 (TP)

CG-12 (TP)

CG-12 (TP)

CG-12 (TP)

CG-12 (TP)

CG-12 (TP)

CG-12 (TP)

CG-12 (TP)

CG-12 (TP)

CG-12 (TP)

CG-12 (TP)

CG-12 (TP)

CG-12 (TP)

CG-12 (TP)

CG-12 (TP)

CG-12 (TP)

CG-12 (TP)

CG-12 (TP)

CG-12 (TP)

CG-12 (TP)

CG-12 (TP)

CG-12 (TP)

CG-12 (TP)

CG-12 (TP)

CG-12 (TP)

CG-12 (TP)

CG-12 (TP)

CG-12 (TP)

CG-12 (TP)

CG-12 (TP)

CG-12 (TP)

CG-12 (TP)

CG-12 (TP)

CG-12 (TP)

CG-12 (TP)

FAYETTE STREETScape - Princess to Queen BRADDOCK IMPLEMENTATION ADVISORY GROUP

OCTOBER 6, 2014

NOT TO SCALE

