

BRADDOCK IMPLEMENTATION ADVISORY GROUP MEETING

OCTOBER 6, 2014

7PM

Charles Houston Recreation Center

www.alexandriava.gov/Braddock



AGENDA

- Open Space Update
 - Interim Open Space
 - 1-Acre Community Park
- Neighborhood Streetscape
 - Recap of Streetscape Tour / Priorities
 - Fayette Street Solutions
 - Next Steps

OPEN SPACE UPDATE

- Interim Open Space (600 N. Henry Street)
- 1-Acre Community Park



STREETSCAPE TOUR: RESULTS

Braddock Implementation Advisory Group
 Streetscape Tour - Scorecard Results
 April 5, 2014

Street	Block	E/N	W/S	Notes
Wythe	Alfred - Patrick	2	2	straighten sign, sidewalk on south should be brick, narrow sidewalk, improve historic sign, need ped. lighting, dead tree
Wythe	Patrick - Henry	2	3	need trees on north side, sidewalks narrow, need ped. lighting
Pendleton	Payne - West		1	narrow sidewalk, few trees on north side, move bus stop
Pendleton	Fayette - Payne	2	4	need trees and green strip on south side, not accessible, narrow sidewalk, lack of pedestrian scale, no street trees (south), profound change would be achievable and dramatically change the look of this corner
Fayette	Oronoco - Pendleton	3	5	need trees but wait for developer, brick sidewalks per plan, concrete in good condition, no trees or lighting (west side), profound change is possible & feasible
Fayette	Princess - Oronoco	8	5	Possibly bump out curb to narrow street & widen sidewalk, brick sidewalks per plan, fill in trees on west side, poles in sidewalk, very narrow, disconnect with accessibility, no ped scale lighting, reduce roadway to widen sidewalk
Fayette	Queen - Princess	7	6	Priority due to proximity to park, retail, and closeness to King Street, add trees to east, narrow sidewalk, no ped scale lighting, street trees not continuous
Queen	Henry - Fayette	2	3	lack of ped scale lighting, missing trees, opportunity for benches, concrete patchy, park is a focal point for families - let's make the corner feel more inviting
Others - Large Map				
Fayette	Wythe - Madison	1	1	
Fayette	Pendleton - Wythe	3	3	
Wythe	Payne - West	2	2	
Wythe	Fayette - Payne	2	2	
Payne	Princess - Oronoco	1	1	
Payne	Oronoco - Pendleton	1	1	
Payne	Pendleton - Wythe	1	1	



STREETSCAPE TOUR: BIAG RECOMMENDATION

■ Top Priorities

- Solve narrow sidewalk issues on Fayette between Queen and Oronoco

■ City Staff Tasks

- Investigate potential solutions for Fayette
- Provide solutions and cost estimates to BIAG for consideration

STREETSCAPE IMPROVEMENTS

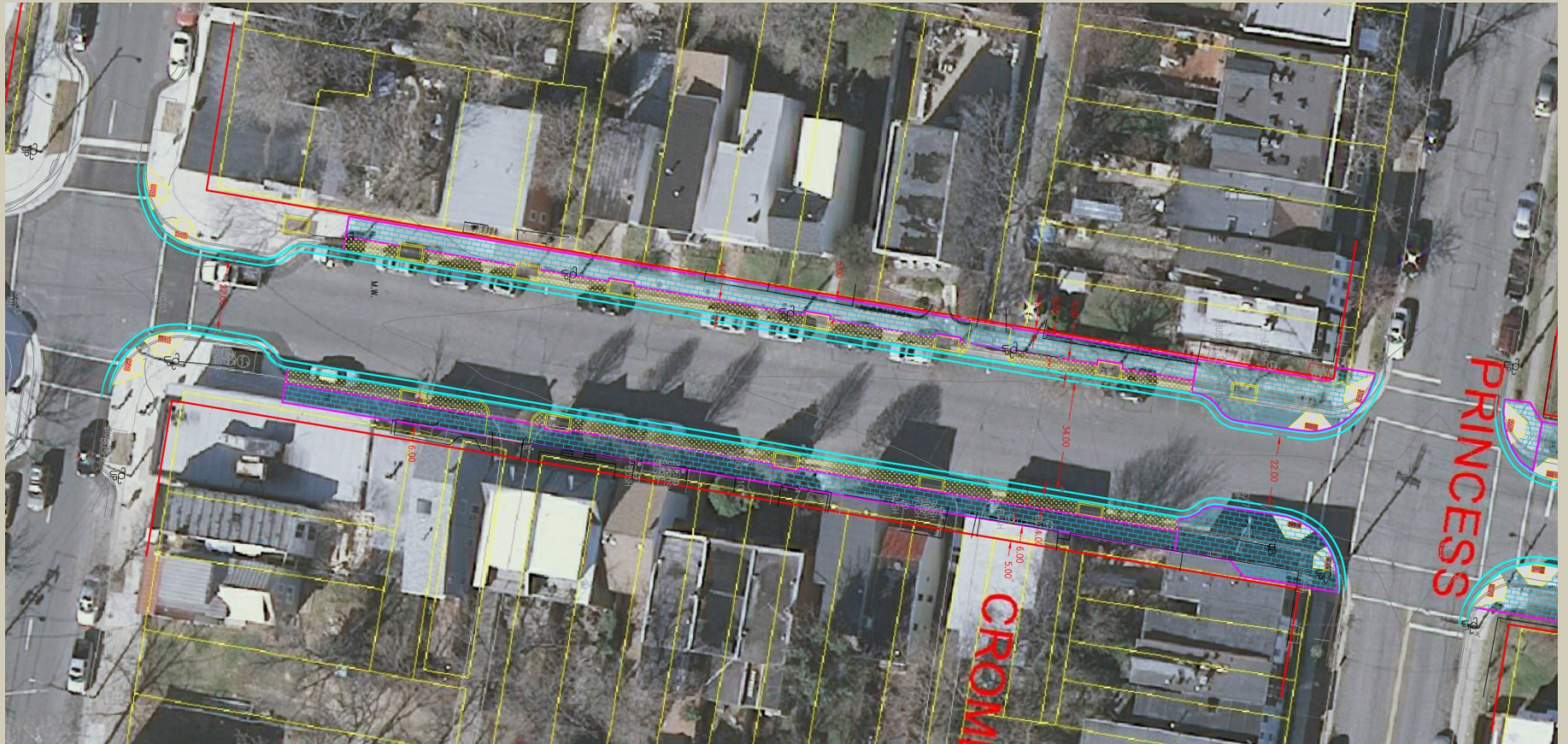
Streetscape Solutions – Options Pros & Cons

- Option 1:
 - Using full width of ROW, removes homeowner features to achieve more sidewalk width
 - Pros: Maximizes width of sidewalk and roadway
 - Cons: City Code allowed construction of homeowner features in ROW, difficult public process anticipated, width gain is not significant, \$1.1 million cost almost double Option 2
- Option 2: (Staff recommendation)
 - Narrows roadway to allow for wider sidewalk, all lanes (inc. parking) retained
 - Pros: Achieves goals in a more feasible way, cost is approximately half Option 1
 - Cons: Slightly narrower roadway lanes and sidewalks

STREETSCAPE IMPROVEMENTS OPTION 1



STREETSCAPE IMPROVEMENTS OPTION 1



STREETSCAPE IMPROVEMENTS OPTION 2



STREETSCAPE IMPROVEMENTS OPTION 2



STREETSCAPE IMPROVEMENTS OPTION 2



STREETSCAPE IMPROVEMENTS OPTION 2



STREETSCAPE IMPROVEMENTS

OPTION 2

- Option 2 Fundamentals:
 - Existing sidewalk width: 4' (with impediments)
 - Proposed sidewalk width: 8' (4' at tree planters)
 - Sidewalk type: full width brick
 - Existing road width: 40'
 - Proposed road width: 36'
 - Existing trees: ~16
 - Proposed trees: 31
 - Estimated cost: \$650,000

STREETSCAPE IMPROVEMENTS NEXT STEPS

- Capital Improvements Projects Design Process:
 - Incorporate BIAG recommendations
 - Utility/ROW coordination (if necessary)
 - Public meeting
 - Final Design (including public comments/recommendations)
 - Advertisement & Award
 - Preconstruction meeting
 - Construction/Implementation

THANK YOU
QUESTIONS?

