

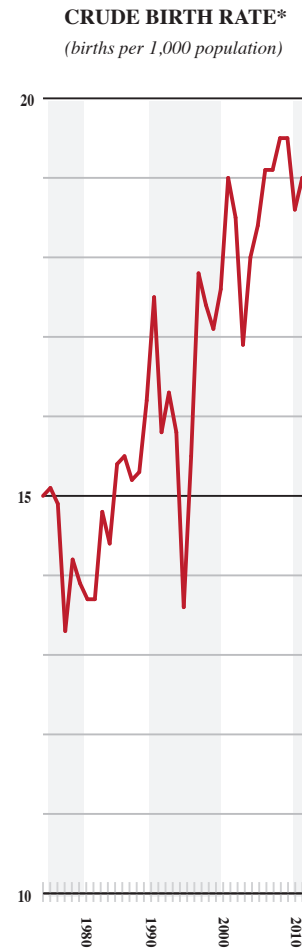
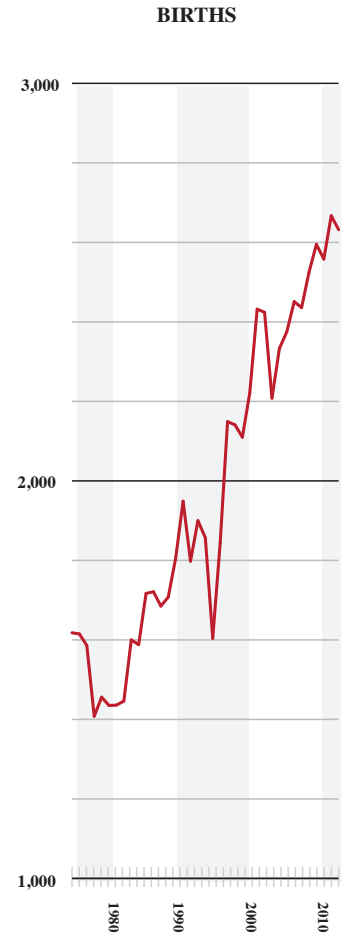
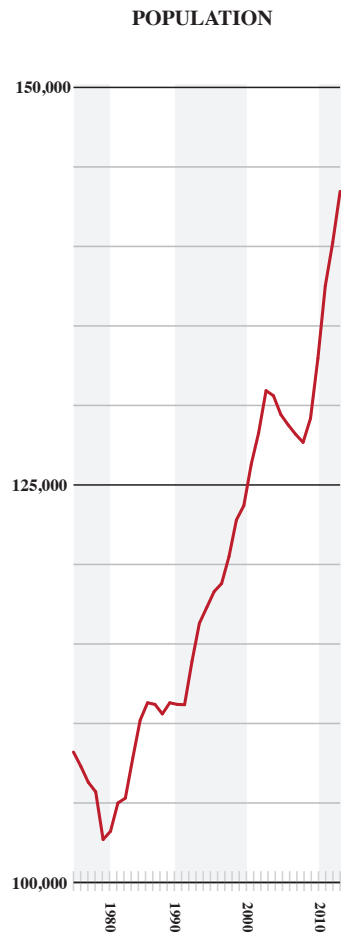
Major Demographic Trends/Factors that could Influence Public School Enrollements in Future Years

I Factors impacting number of births and size of school-aged population in the City

- Changes in Crude Birth Rate (*births per 1,000 population*)
- Changes in Total Fertility Rate (*average number of births a women has in her lifetime*)
- Structural changes in age composition affecting relative size of cohort consisting of females in child-bearing years
- Changes in racial/ethnic composition that may result in an increase/decrease in fertility rates (*i.e., number of births per 1,000 women 15-44 years of age*)

Trends in Population, Births and Crude Birth Rate

City of Alexandria
1975 to 2011

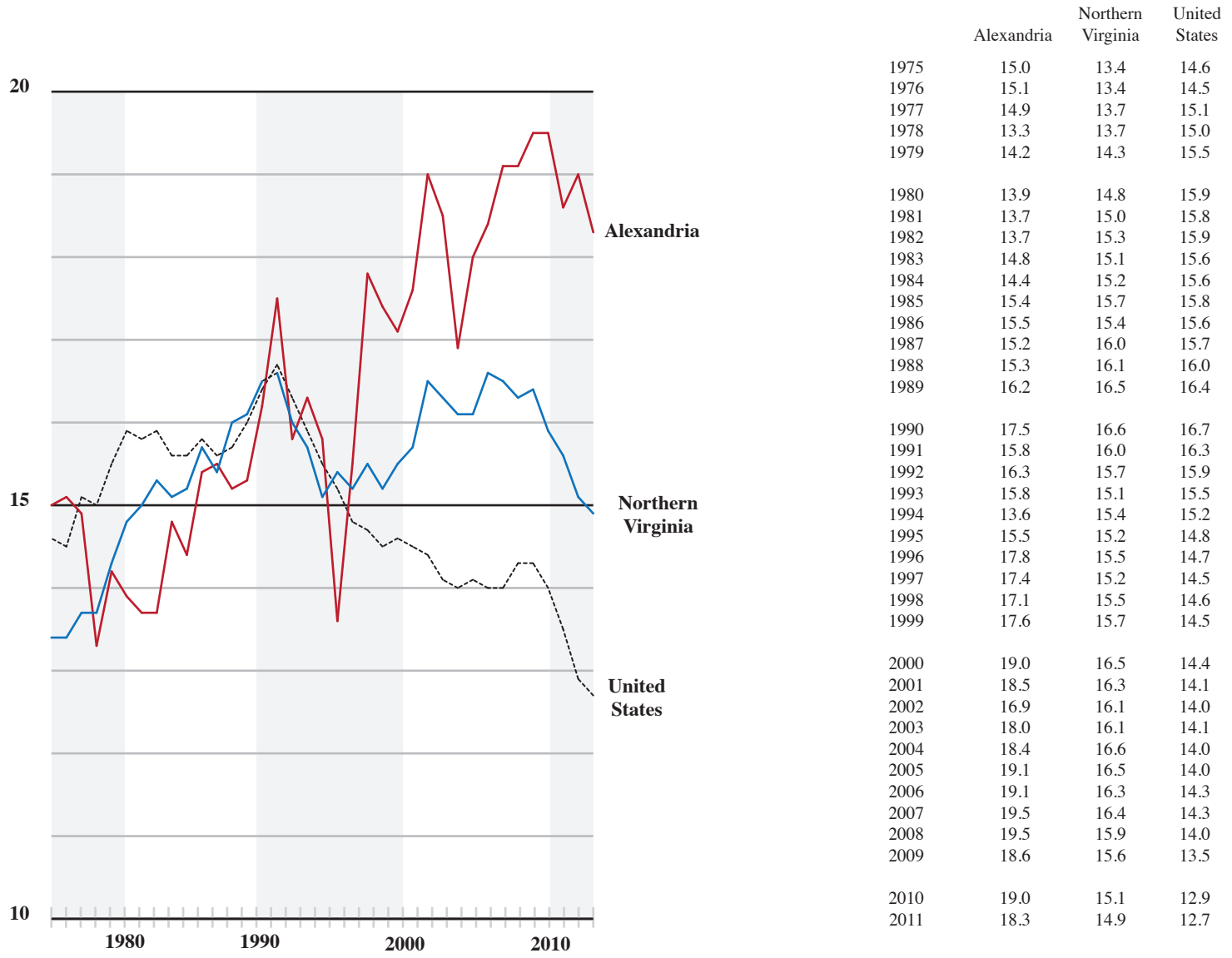


	Population	Births	Per 1,000 Population
1975	108,200	1,618	15.0
1976	107,300	1,615	15.1
1977	106,300	1,586	14.9
1978	105,700	1,408	13.3
1979	102,700	1,456	14.2
1980	103,217	1,435	13.9
1981	105,000	1,436	13.7
1982	105,300	1,446	13.7
1983	107,800	1,600	14.8
1984	110,200	1,588	14.4
1985	111,300	1,717	15.4
1986	111,200	1,721	15.5
1987	110,600	1,685	15.2
1988	111,300	1,708	15.3
1989	111,200	1,806	16.2
1990	111,183	1,949	17.5
1991	113,900	1,798	15.8
1992	116,300	1,900	16.3
1993	117,300	1,857	15.8
1994	118,300	1,604	13.6
1995	118,800	1,842	15.5
1996	120,500	2,149	17.8
1997	122,800	2,141	17.4
1998	123,700	2,110	17.1
1999	126,300	2,221	17.6
2000	128,283	2,432	19.0
2001	130,932	2,424	18.5
2002	130,614	2,208	16.9
2003	129,421	2,333	18.0
2004	128,765	2,375	18.4
2005	128,181	2,451	19.1
2006	127,676	2,436	19.1
2007	129,175	2,525	19.5
2008	132,949	2,595	19.5
2009	137,523	2,558	18.6
2010	140,236	2,667	19.0
2011	143,464	2,632	18.3
2012	147,391		

Source: Intercensal Estimates, U.S. Census Bureau and Weldon Cooper Center, UVA; Births. Virginia Department of Health

Trends in Crude Birth Rates

Comparison with National and Regional Trends



Crude Birth Rate Trend

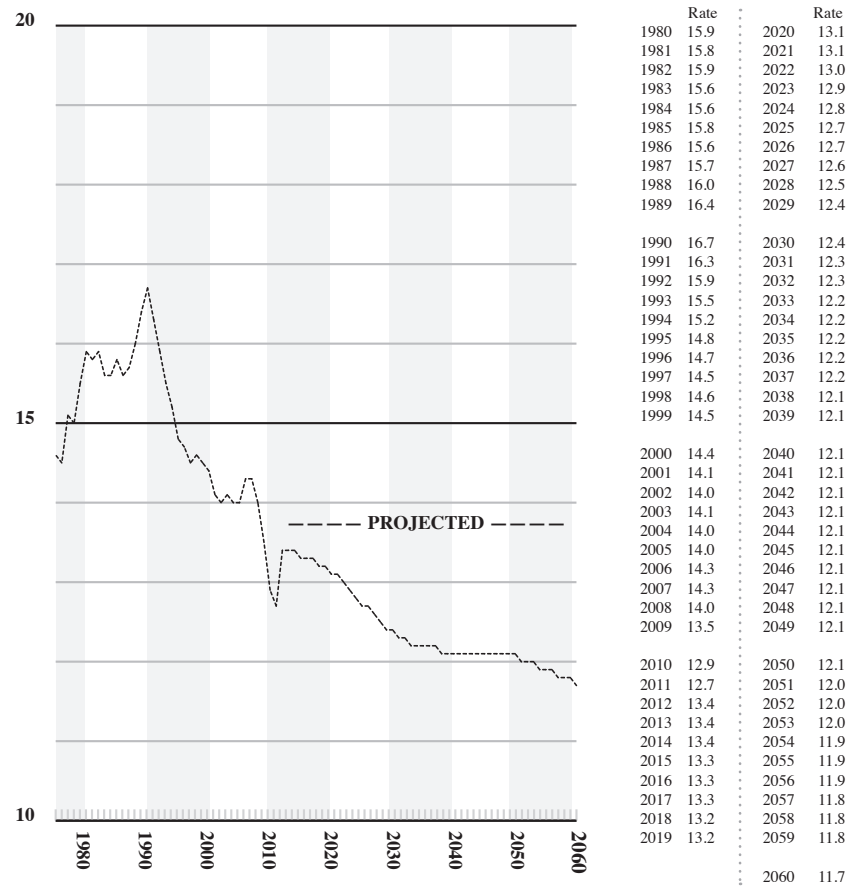
Neighboring Northern Virginia Counties and Cities

	Alexandria	Arlington	City of Fairfax	Fairfax County	Falls Church	Loudoun County	Manassas	Manassas Park	Prince William County	Northern Virginia	U.S.A
1975	15.0	11.0	12.6	12.3	9.3	15.9	10.4	6.6	19.4	13.4	14.6
1976	15.1	11.1	11.5	12.2	10.4	15.1	20.7	12.9	19.2	13.4	14.5
1977	14.9	11.0	12.7	12.6	11.7	15.2	18.8	17.5	19.1	13.7	15.1
1978	13.3	11.7	13.6	12.7	10.2	14.1	22.2	17.4	18.8	13.7	15.0
1979	14.2	12.3	16.6	13.4	12.5	15.1	23.9	16.4	18.5	14.3	15.5
1980	13.9	12.7	15.1	14.0	11.2	15.6	23.3	18.4	19.9	14.8	15.9
1981	13.7	12.7	18.6	14.1	12.4	15.4	23.4	19.8	20.2	15.0	15.8
1982	13.7	14.4	15.7	14.4	10.7	16.5	21.0	21.3	20.0	15.3	15.9
1983	14.8	13.9	15.6	14.3	12.0	15.6	23.4	19.1	18.5	15.1	15.6
1984	14.4	13.9	16.0	14.4	11.7	16.0	24.3	16.1	18.9	15.2	15.6
1985	15.4	14.9	16.0	14.8	12.2	18.2	23.4	20.9	18.9	15.7	15.8
1986	15.5	14.7	15.4	14.5	11.7	17.1	27.3	21.0	17.9	15.4	15.6
1987	15.2	15.2	14.5	14.9	12.4	18.3	20.7	20.4	20.1	16.0	15.7
1988	15.3	14.8	18.4	15.3	11.9	18.8	19.9	17.6	19.4	16.1	16.0
1989	16.2	15.1	14.6	15.6	12.9	18.7	22.4	21.3	20.1	16.5	16.4
1990	17.5	15.4	13.0	15.4	10.4	19.2	20.4	20.2	20.4	16.6	16.7
1991	15.8	13.8	15.1	15.3	11.1	18.4	19.1	21.5	19.6	16.0	16.3
1992	16.3	14.2	14.4	14.8	10.1	18.5	19.1	22.7	18.5	15.7	15.9
1993	15.8	14.0	15.0	14.2	10.3	17.5	18.8	19.5	17.7	15.1	15.5
1994	13.6	14.7	12.7	14.8	10.7	18.9	18.8	21.6	17.3	15.4	15.2
1995	15.5	14.4	12.9	14.4	9.8	18.5	19.4	18.3	16.6	15.2	14.8
1996	17.8	15.2	12.1	14.5	7.9	18.4	20.4	16.3	17.0	15.5	14.7
1997	17.4	14.2	11.8	14.0	11.0	18.6	19.5	17.5	17.2	15.2	14.5
1998	17.1	14.2	13.2	14.5	8.7	18.8	19.0	18.9	17.3	15.5	14.6
1999	17.6	13.7	13.1	14.7	11.8	18.8	19.6	20.5	17.1	15.7	14.5
2000	19.0	14.3	12.3	15.1	12.1	21.5	22.0	20.2	18.0	16.5	14.4
2001	18.5	14.8	12.1	14.9	8.3	20.3	19.2	19.3	18.3	16.3	14.1
2002	16.9	14.1	12.5	14.8	8.7	20.6	19.0	21.6	18.1	16.1	14.0
2003	18.0	14.1	14.5	14.6	11.7	20.2	18.9	18.9	18.4	16.1	14.1
2004	18.4	15.0	9.2	15.1	9.6	20.2	17.4	24.5	19.1	16.6	14.0
2005	19.1	15.0	11.0	14.7	11.1	20.2	18.8	22.2	18.9	16.5	14.0
2006	19.1	13.6	14.9	14.4	9.7	19.0	21.5	25.8	19.6	16.3	14.3
2007	19.5	14.6	17.7	14.9	11.3	18.4	18.8	18.5	18.5	16.4	14.3
2008	19.5	14.9	18.4	14.7	11.1	18.1	15.7	-	17.1	15.9	14.0
2009	18.6	14.5	16.4	14.6	12.9	16.6	15.8	16.7	17.0	15.6	13.5
2010	19.0	14.9	14.5	14.1	9.5	16.0	17.7	1.5	16.4	15.1	12.9
2011	18.3	14.2	21.7	13.8	11.8	15.3	18.5	4.5	16.1	14.9	12.7

Projected Crude Birth Trends

What Census Bureau is Projecting for the United States: 2012 to 2060

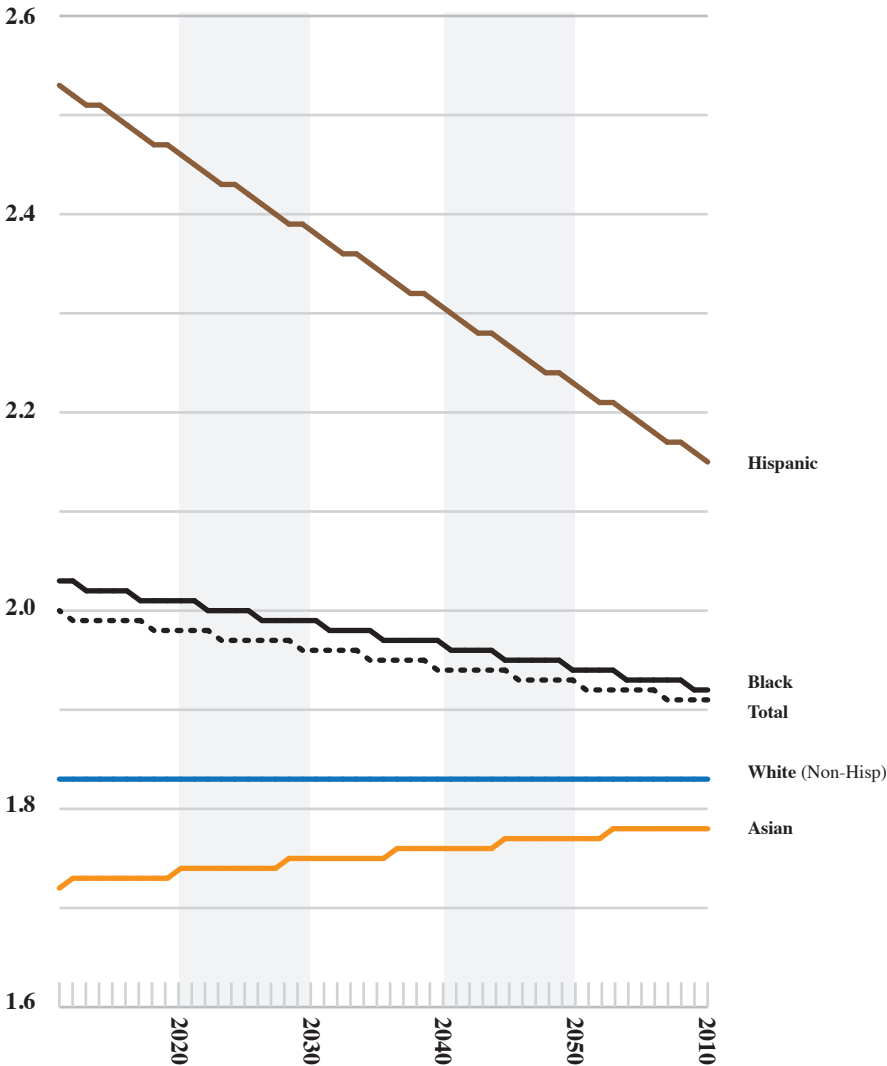
Crude Birth Rate (births per 1,000 population)



Total Fertility Rate
(average number of births per woman)

Projected Fertility Trends

What Census Bureau is Projecting for the United States: 2012 to 2060

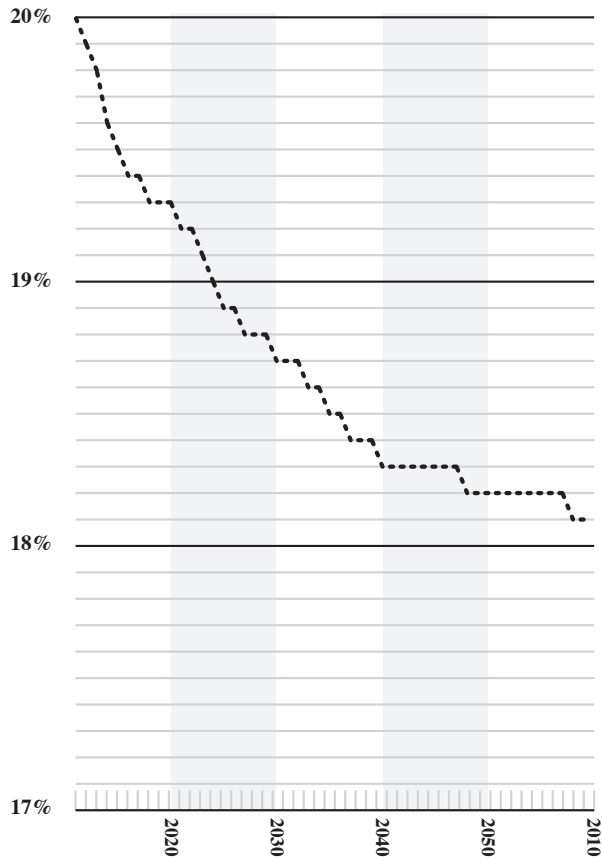


	Total	White	Black	Asian	Hispanic
2012	2.00	1.83	2.03	1.72	2.53
2013	1.99	1.83	2.03	1.73	2.52
2014	1.99	1.83	2.02	1.73	2.51
2015	1.99	1.83	2.02	1.73	2.51
2016	1.99	1.83	2.02	1.73	2.50
2017	1.99	1.83	2.02	1.73	2.49
2018	1.99	1.83	2.01	1.73	2.48
2019	1.98	1.83	2.01	1.73	2.47
2020	1.98	1.83	2.01	1.73	2.47
2021	1.98	1.83	2.01	1.74	2.46
2022	1.98	1.83	2.01	1.74	2.45
2023	1.98	1.83	2.00	1.74	2.44
2024	1.97	1.83	2.00	1.74	2.43
2025	1.97	1.83	2.00	1.74	2.43
2026	1.97	1.83	2.00	1.74	2.42
2027	1.97	1.83	1.99	1.74	2.41
2028	1.97	1.83	1.99	1.74	2.40
2029	1.97	1.83	1.99	1.75	2.39
2030	1.96	1.83	1.99	1.75	2.39
2031	1.96	1.83	1.99	1.75	2.38
2032	1.96	1.83	1.98	1.75	2.37
2033	1.96	1.83	1.98	1.75	2.36
2034	1.96	1.83	1.98	1.75	2.36
2035	1.95	1.83	1.98	1.75	2.35
2036	1.95	1.83	1.97	1.75	2.34
2037	1.95	1.83	1.97	1.76	2.33
2038	1.95	1.83	1.97	1.76	2.32
2039	1.95	1.83	1.97	1.76	2.32
2040	1.94	1.83	1.97	1.76	2.31
2041	1.94	1.83	1.96	1.76	2.30
2042	1.94	1.83	1.96	1.76	2.29
2043	1.94	1.83	1.96	1.76	2.28
2044	1.94	1.83	1.96	1.76	2.28
2045	1.94	1.83	1.95	1.77	2.27
2046	1.93	1.83	1.95	1.77	2.26
2047	1.93	1.83	1.95	1.77	2.25
2048	1.93	1.83	1.95	1.77	2.24
2049	1.93	1.83	1.95	1.77	2.24
2050	1.93	1.83	1.94	1.77	2.23
2051	1.92	1.83	1.94	1.77	2.22
2052	1.92	1.83	1.94	1.77	2.21
2053	1.92	1.83	1.94	1.78	2.21
2054	1.92	1.83	1.93	1.78	2.20
2055	1.92	1.83	1.93	1.78	2.19
2056	1.92	1.83	1.93	1.78	2.18
2057	1.91	1.83	1.93	1.78	2.17
2058	1.91	1.83	1.93	1.78	2.17
2059	1.91	1.83	1.92	1.78	2.16
2060	1.91	1.83	1.92	1.78	2.15

Total fertility rate represents the number of children that would be born to a woman if she were to live to the end of her childbearing years and bear children in accordance with current age-specific fertility rates.

Projected Trend in Relative Size of Female 15-44 Aged Cohort - Women in Child-Bearing Years
 What Census Bureau is Projecting for United States: 2012 to 2060

I. Percentage Share of Total U.S. Population

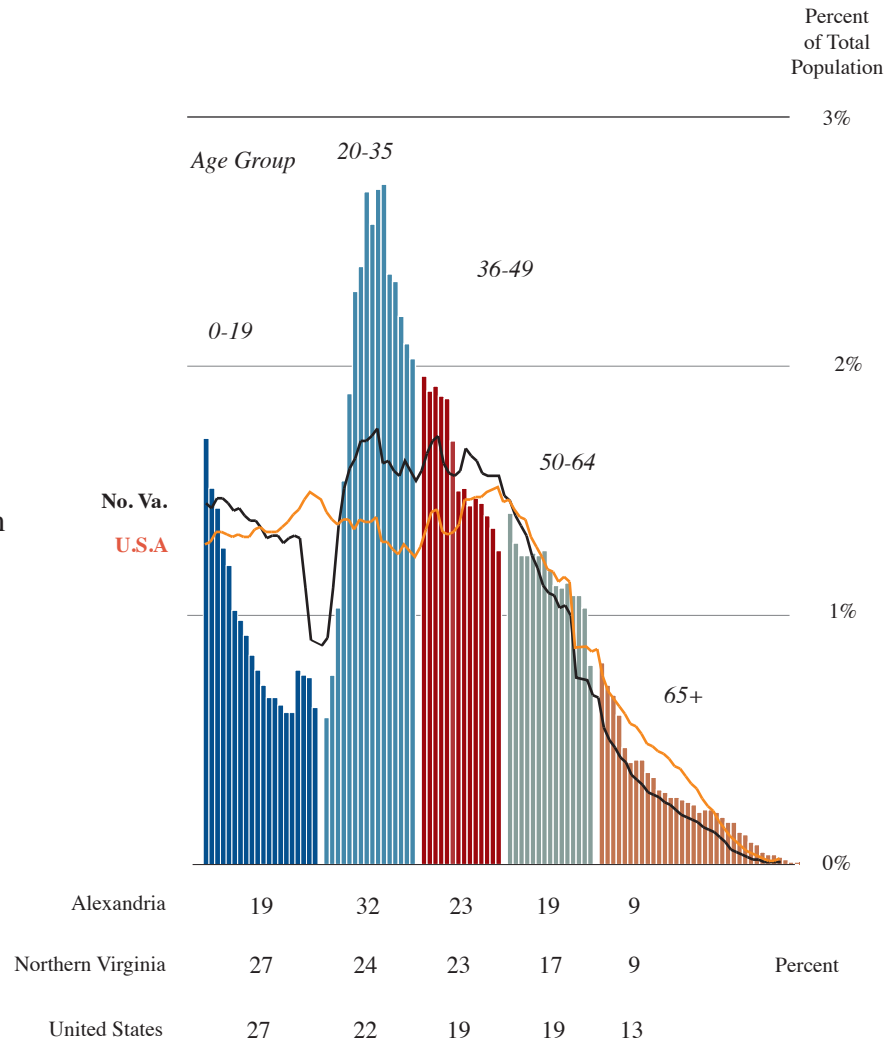


Year	Percentage (%)	Year	Percentage (%)
2012	20.0	2040	18.4
2013	19.9	2041	18.3
2014	19.8	2042	18.3
2015	19.6	2043	18.3
2016	19.5	2044	18.3
2017	19.4	2045	18.3
2018	19.4	2046	18.3
2019	19.3	2047	18.3
2048	18.3		
2020	19.3	2049	18.2
2021	19.3		
2022	19.2	2050	18.2
2023	19.2	2051	18.2
2024	19.1	2052	18.2
2025	19.0	2053	18.2
2026	18.9	2054	18.2
2027	18.9	2055	18.2
2028	18.8	2056	18.2
2029	18.8	2057	18.2
		2058	18.2
2030	18.8	2059	18.1
2031	18.7		
2032	18.7	2060	18.1
2033	18.7		
2034	18.6		
2035	18.6		

Age Structure of Alexandria's Population 2010

QUESTION:

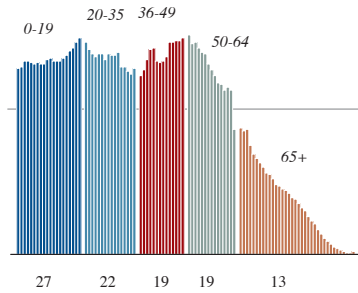
With the baby-boom generation entering retirement years, the age structure of the population will be undergoing an historic reconfiguration. What impact, if any, could this demographic transition have on future birth and public school enrollment trends in the City?



Age Profiles of Alexandria and Arlington County Reflect Urban Character

UNITED STATES

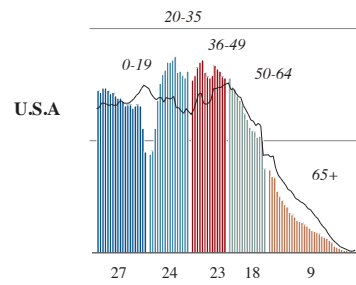
Age Group



INNER CORE

NORTHERN VIRGINIA

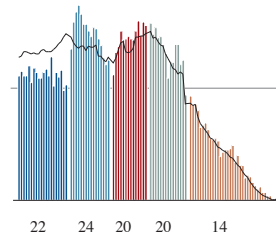
Age Group



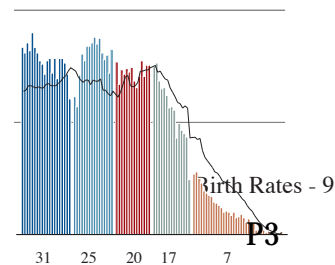
INNER SUBURBS

City of Fairfax

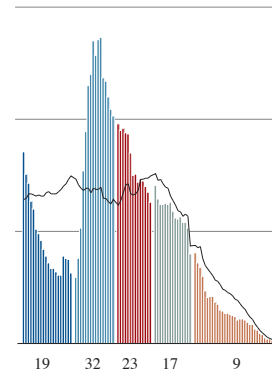
U.S.A



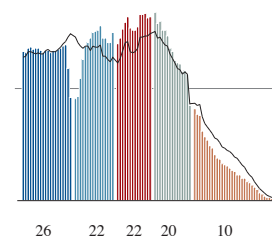
Manassas



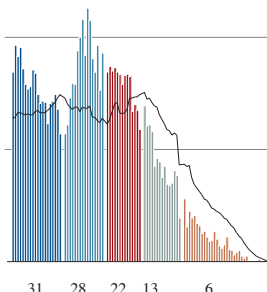
Alexandria



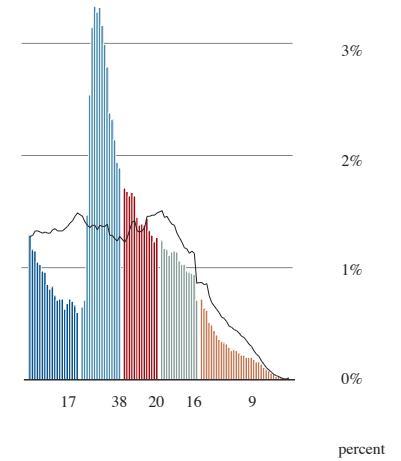
Fairfax County



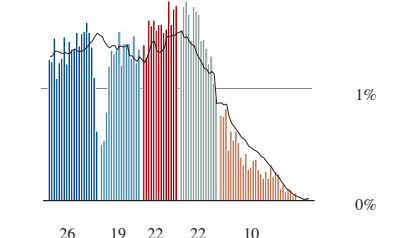
Manassas Park



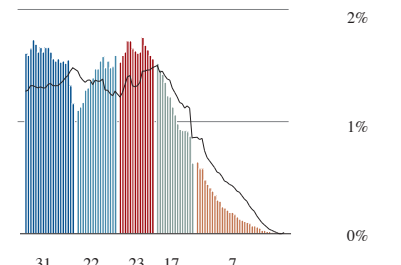
Arlington County



Falls Church

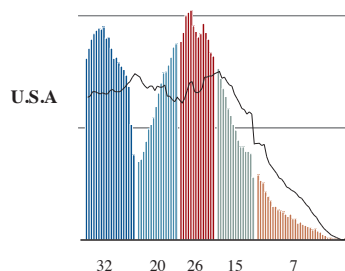


Prince William



OUTER SUBURBS

Loudoun County



Characteristics of Alexandria's Female Population, aged 15-44

Size and Demographic Composition

2000 Census

	Females (15-44)	Black	Asian	Hispanic	Non- Hispanic Whites	Minority	2000 Population	Percent of Total Population
Alexandria city	35,352	8,339	2,289	5,266	18,192	17,160	128,283	27.6
Arlington County	49,847	4,795	5,137	9,467	28,960	20,887	189,453	26.3
Fairfax city	4,822	311	724	784	2,891	1,931	21,498	22.4
Fairfax County	219,668	22,268	33,231	28,004	129,490	90,178	969,749	22.7
Falls Church city	2,100	94	188	230	1,541	559	10,377	20.2
Loudoun County	41,543	2,959	2,620	2,702	32,508	9,035	169,599	24.5
Manassas city	8,359	1,128	308	1,260	5,497	2,862	35,135	23.8
Manassas Park city	2,605	308	128	377	1,736	869	10,290	25.3
Prince William County	68,403	14,375	3,057	6,886	42,302	26,101	280,813	24.4
NORTHERN VIRGINIA	432,699	54,577	47,682	54,976	263,117	169,582	1,815,197	23.8
VIRGINIA	1,589,080	339,281	72,121	84,528	1,063,947	525,133	7,078,515	22.4
U.S.A.	61,576,997	8,442,267	2,682,228	8,509,703	40,460,458	21,116,539	281,421,906	21.9

PERCENT - By Race/Ethnicity

Alexandria city	23.6	6.5	14.9	51.5	48.5
Arlington County	9.6	10.3	19.0	58.1	41.9
Fairfax city	6.4	15.0	16.3	60.0	40.0
Fairfax County	10.1	15.1	12.7	58.9	41.1
Falls Church city	4.5	9.0	11.0	73.4	26.6
Loudoun County	7.1	6.3	6.5	78.3	21.7
Manassas city	13.5	3.7	15.1	65.8	34.2
Manassas Park city	11.8	4.9	14.5	66.6	33.4
Prince William County	21.0	4.5	10.1	61.8	38.2
NORTHERN VIRGINIA	12.6	11.0	12.7	60.8	39.2
VIRGINIA	21.4	4.5	5.3	67.0	33.0
VIRGINIA	13.7	4.4	13.8	65.7	34.3

Characteristics of Alexandria's Female Population, aged 15-44

Size and Demographic Composition

2010 Census

	Females (15-44)	Black	Asian	Hispanic	Non- Hispanic Whites	Minority	2010 Population	Percent of Total Population
Alexandria city	37,149	8,455	2,726	6,269	18,716	18,433	139,966	26.5
Arlington County	57,112	4,496	6,793	8,264	36,071	21,041	207,627	27.5
Fairfax city	4,533	249	838	883	2,417	2,116	22,565	20.1
Fairfax County	225,140	23,999	45,592	41,834	106,804	118,336	1,081,726	20.8
Falls Church city	2,419	134	305	280	1,623	796	12,332	19.6
Loudoun County	68,333	5,370	11,984	9,828	39,392	28,941	312,311	21.9
Manassas city	8,345	1,218	445	2,900	3,600	4,745	37,821	22.1
Manassas Park city	3,427	473	334	1,166	1,366	2,061	14,273	24.0
Prince William County	88,899	19,676	7,379	20,425	38,726	50,173	402,002	22.1
NORTHERN VIRGINIA	495,357	64,070	76,396	91,849	248,715	246,642	2,230,623	22.2
VIRGINIA	1,652,698	348,733	112,961	157,002	994,778	657,920	8,001,024	20.7
U.S.A.	62,374,964	8,888,036	3,624,440	11,786,165	36,427,835	25,947,129	308,745,538	20.2

PERCENT - By Race/Ethnicity

Alexandria city	22.8	7.3	16.9	50.4	49.6
Arlington County	7.9	11.9	14.5	63.2	36.8
Fairfax city	5.5	18.5	19.5	53.3	46.7
Fairfax County	10.7	20.3	18.6	47.4	52.6
Falls Church city	5.5	12.6	11.6	67.1	32.9
Loudoun County	7.9	17.5	14.4	57.6	42.4
Manassas city	14.6	5.3	34.8	43.1	56.9
Manassas Park city	13.8	9.7	34.0	39.9	60.1
Prince William County	22.1	8.3	23.0	43.6	56.4
NORTHERN VIRGINIA	12.9	15.4	18.5	50.2	49.8
VIRGINIA	21.1	6.8	9.5	60.2	39.8
U.S.A.	14.2	5.8	18.9	58.4	41.6

Change in Size and Demographic Composition - Alexandria's Female Population, aged 15-44
2000 to 2010

Numerical Change

	Females (15-44)	Black	Asian	Hispanic	Non- Hispanic Whites	Minority	Total Population	As a Percent of Total Population
Alexandria city	1,797	116	437	1,003	524	1,273	11,683	1.0
Arlington County	7,265	299	1,656	1,203	7,111	154	18,174	1.2
Fairfax city	289	62	114	99	474	185	1,067	2.3
Fairfax County	5,472	1,731	12,361	13,830	22,686	28,158	111,977	1.8
Falls Church city	319	40	117	50	82	237	1,955	0.6
Loudoun County	26,790	2,411	9,364	7,126	6,884	19,906	142,712	2.6
Manassas city	14	90	137	1,640	1,897	1,883	2,686	1.7
Manassas Park city	822	165	206	789	370	1,192	3,983	1.3
Prince William County	20,496	5,301	4,322	13,539	3,576	24,072	121,189	2.2
NORTHERN VIRGINIA	62,658	9,493	28,714	36,873	14,402	77,060	415,426	1.6
VIRGINIA	63,618	9,452	40,840	72,474	69,169	132,787	922,509	1.8
U.S.A.	797,967	445,769	942,212	3,276,462	4,032,623	4,830,590	27,323,632	1.7

Change in PERCENT - By Race/Ethnicity

Alexandria city	0.8	0.9	2.0	1.1	1.1
Arlington County	1.7	1.6	4.5	5.1	5.1
Fairfax city	1.0	3.5	3.2	6.6	6.6
Fairfax County	0.5	5.1	5.8	11.5	11.5
Falls Church city	1.1	3.7	0.6	6.3	6.3
Loudoun County	0.7	11.2	7.9	20.6	20.6
Manassas city	1.1	1.6	19.7	22.6	22.6
Manassas Park city	2.0	4.8	19.6	26.8	26.8
Prince William County	1.1	3.8	12.9	18.3	18.3
NORTHERN VIRGINIA	0.3	4.4	5.8	10.6	10.6
VIRGINIA	0.2	2.3	4.2	6.8	6.8
U.S.A.	0.5	1.5	5.1	7.3	7.3