



THE NCSTM
The National Citizen SurveyTM

Alexandria, VA

Technical Appendices
2016



NRC
National Research Center Inc

2955 Valmont Road Suite 300
Boulder, Colorado 80301
n-r-c.com • 303-444-7863

ICMA

Leaders at the Core of Better Communities

777 North Capitol Street NE Suite 500
Washington, DC 20002
icma.org • 800-745-8780

Contents

Appendix A: Complete Survey Responses	1
Appendix B: Benchmark Comparisons	11
Appendix C: Detailed Survey Methods	28
Appendix D: Survey Materials	33

Appendix A: Complete Survey Responses

Responses excluding “don’t know”

The following pages contain a complete set of responses to each question on the survey, excluding the “don’t know” responses. The percent of respondents giving a particular response is shown followed by the number of respondents (denoted with “N=”).

Table 1: Question 1

Please rate each of the following aspects of quality of life in Alexandria:	Excellent		Good		Fair		Poor		Total	
	%	N	%	N	%	N	%	N	%	N
Alexandria as a place to live	43%	N=151	48%	N=169	9%	N=30	0%	N=0	100%	N=349
Your neighborhood as a place to live	44%	N=154	39%	N=136	15%	N=51	2%	N=9	100%	N=351
Alexandria as a place to raise children	28%	N=73	45%	N=116	23%	N=59	4%	N=10	100%	N=258
Alexandria as a place to work	35%	N=82	46%	N=106	18%	N=41	2%	N=4	100%	N=233
Alexandria as a place to visit	55%	N=186	35%	N=120	10%	N=35	0%	N=0	100%	N=342
Alexandria as a place to retire	24%	N=59	28%	N=67	31%	N=76	17%	N=42	100%	N=244
The overall quality of life in Alexandria	33%	N=117	50%	N=177	17%	N=59	0%	N=0	100%	N=354

Table 2: Question 2

Please rate each of the following characteristics as they relate to Alexandria as a whole:	Excellent		Good		Fair		Poor		Total	
	%	N	%	N	%	N	%	N	%	N
Overall feeling of safety in Alexandria	20%	N=72	60%	N=210	18%	N=64	2%	N=6	100%	N=351
Overall ease of getting to the places you usually have to visit	26%	N=90	47%	N=165	24%	N=85	3%	N=10	100%	N=350
Quality of overall natural environment in Alexandria	21%	N=73	58%	N=199	17%	N=60	4%	N=13	100%	N=345
Overall "built environment" of Alexandria (including overall design, buildings, parks and transportation systems)	15%	N=51	60%	N=206	20%	N=69	5%	N=16	100%	N=341
Health and wellness opportunities in Alexandria	24%	N=74	53%	N=165	22%	N=67	2%	N=7	100%	N=312
Overall opportunities for education and enrichment	21%	N=56	48%	N=131	26%	N=72	5%	N=13	100%	N=272
Overall economic health of Alexandria	18%	N=53	56%	N=165	24%	N=71	1%	N=4	100%	N=293
Sense of community	17%	N=55	42%	N=137	33%	N=110	8%	N=25	100%	N=328
Overall image or reputation of Alexandria	33%	N=112	54%	N=187	13%	N=44	0%	N=0	100%	N=343
Historic character reflected in built environment, exhibits, and events	50%	N=174	42%	N=144	6%	N=22	2%	N=7	100%	N=347

Table 3: Question 3

Please indicate how likely or unlikely you are to do each of the following:	Very likely		Somewhat likely		Somewhat unlikely		Very unlikely		Total	
	%	N	%	N	%	N	%	N	%	N
Recommend living in Alexandria to someone who asks	55%	N=191	38%	N=132	4%	N=14	3%	N=11	100%	N=349
Remain in Alexandria for the next five years	49%	N=159	30%	N=97	11%	N=36	9%	N=29	100%	N=321

Table 4: Question 4

Please rate how safe or unsafe you feel:	Very safe		Somewhat safe		Neither safe nor unsafe		Somewhat unsafe		Very unsafe		Total	
	%	N	%	N	%	N	%	N	%	N	%	N
In your neighborhood during the day	66%	N=229	27%	N=94	4%	N=15	3%	N=9	0%	N=1	100%	N=348
In Alexandria's downtown area (i.e. Old Town) during the day	74%	N=249	22%	N=76	3%	N=10	1%	N=3	0%	N=1	100%	N=339

The National Citizen Survey™

Table 5: Question 5

Please rate each of the following characteristics as they relate to Alexandria as a whole:	Excellent		Good		Fair		Poor		Total	
	%	N	%	N	%	N	%	N	%	N
Traffic flow on major streets	7%	N=26	35%	N=124	40%	N=140	17%	N=61	100%	N=351
Ease of public parking	6%	N=21	21%	N=71	45%	N=155	28%	N=97	100%	N=344
Ease of travel by car in Alexandria	11%	N=39	40%	N=141	41%	N=144	8%	N=27	100%	N=350
Ease of travel by public transportation in Alexandria	16%	N=50	51%	N=160	26%	N=81	6%	N=19	100%	N=311
Ease of travel by bicycle in Alexandria	21%	N=47	51%	N=116	20%	N=44	9%	N=20	100%	N=227
Ease of walking in Alexandria	32%	N=111	51%	N=177	14%	N=49	3%	N=10	100%	N=348
Availability of paths and walking trails	30%	N=99	48%	N=158	19%	N=63	3%	N=10	100%	N=330
Air quality	23%	N=75	53%	N=178	20%	N=67	4%	N=13	100%	N=333
Cleanliness of Alexandria	22%	N=77	61%	N=215	16%	N=58	1%	N=2	100%	N=353
Overall appearance of Alexandria	28%	N=98	60%	N=213	12%	N=41	0%	N=2	100%	N=354
Public places where people want to spend time	28%	N=96	54%	N=186	17%	N=57	1%	N=5	100%	N=344
Variety of housing options	16%	N=53	34%	N=111	31%	N=103	18%	N=60	100%	N=328
Availability of affordable quality housing	7%	N=20	15%	N=45	32%	N=98	47%	N=144	100%	N=307
Fitness opportunities (including exercise classes and paths or trails, etc.)	25%	N=84	49%	N=165	22%	N=74	4%	N=12	100%	N=335
Recreational opportunities	23%	N=77	56%	N=184	17%	N=57	3%	N=11	100%	N=328
Availability of affordable quality food	22%	N=74	46%	N=156	28%	N=96	5%	N=15	100%	N=341
Availability of affordable quality health care	22%	N=62	40%	N=112	33%	N=91	5%	N=15	100%	N=279
Availability of preventive health services	24%	N=58	39%	N=97	32%	N=78	5%	N=13	100%	N=246
Availability of affordable quality mental health care	20%	N=30	30%	N=44	36%	N=54	14%	N=21	100%	N=149

Table 6: Question 6

Please rate each of the following characteristics as they relate to Alexandria as a whole:	Excellent		Good		Fair		Poor		Total	
	%	N	%	N	%	N	%	N	%	N
Availability of affordable quality child care/preschool	13%	N=18	28%	N=38	30%	N=41	28%	N=38	100%	N=136
K-12 education	16%	N=27	36%	N=59	28%	N=46	20%	N=34	100%	N=166
Adult educational opportunities	16%	N=31	52%	N=102	25%	N=48	7%	N=14	100%	N=195
Opportunities to attend cultural/arts/music activities	22%	N=69	51%	N=157	24%	N=75	2%	N=6	100%	N=308
Employment opportunities	11%	N=26	43%	N=101	38%	N=90	8%	N=20	100%	N=236
Shopping opportunities	33%	N=115	46%	N=160	19%	N=65	2%	N=7	100%	N=347
Cost of living in Alexandria	3%	N=9	16%	N=54	47%	N=164	34%	N=118	100%	N=344
Overall quality of business and service establishments in Alexandria	22%	N=73	56%	N=189	21%	N=71	1%	N=5	100%	N=337
Vibrant downtown/commercial area	39%	N=134	47%	N=160	13%	N=44	1%	N=3	100%	N=341
Overall quality of new development in Alexandria	17%	N=50	47%	N=140	29%	N=85	7%	N=22	100%	N=296
Opportunities to participate in social events and activities	27%	N=79	49%	N=145	20%	N=58	5%	N=14	100%	N=297
Opportunities to volunteer	29%	N=76	50%	N=131	17%	N=44	3%	N=9	100%	N=260
Opportunities to participate in community matters	22%	N=59	48%	N=128	27%	N=73	3%	N=9	100%	N=269
Openness and acceptance of the community toward people of diverse backgrounds	27%	N=83	44%	N=137	23%	N=72	5%	N=17	100%	N=309
Neighborliness of residents in Alexandria	17%	N=55	42%	N=138	31%	N=102	10%	N=33	100%	N=328

The National Citizen Survey™

Table 7: Question 7

Please indicate whether or not you have done each of the following in the last 12 months.	No		Yes		Total	
Made efforts to conserve water	24%	N=83	76%	N=267	100%	N=350
Made efforts to make your home more energy efficient	36%	N=127	64%	N=224	100%	N=351
Observed a code violation or other hazard in Alexandria	74%	N=257	26%	N=92	100%	N=349
Household member was a victim of a crime in Alexandria	91%	N=320	9%	N=32	100%	N=353
Reported a crime to the police in Alexandria	86%	N=298	14%	N=49	100%	N=347
Contacted the City of Alexandria (in-person, phone, email or web) for help or information	51%	N=178	49%	N=171	100%	N=349
Contacted Alexandria elected officials (in-person, phone, email or web) to express your opinion	82%	N=285	18%	N=65	100%	N=349
Had the flu shot	43%	N=150	57%	N=200	100%	N=349

Table 8: Question 8

In the last 12 months, about how many times, if at all, have you or other household members done each of the following in Alexandria?	2 times a week or more		2-4 times a month		Once a month or less		Not at all		Total	
Used Alexandria recreation centers or their services	7%	N=26	14%	N=50	29%	N=101	50%	N=174	100%	N=350
Visited a neighborhood park or City park	20%	N=70	34%	N=119	32%	N=110	15%	N=52	100%	N=350
Used Alexandria public libraries or their services	8%	N=30	22%	N=78	34%	N=118	36%	N=127	100%	N=352
Attended a City-sponsored event	1%	N=4	7%	N=25	48%	N=168	44%	N=154	100%	N=351
Used bus, rail, subway or other public transportation instead of driving	31%	N=109	20%	N=70	32%	N=113	17%	N=61	100%	N=353
Carpooled with other adults or children instead of driving alone	12%	N=41	13%	N=43	14%	N=47	62%	N=214	100%	N=345
Walked or biked instead of driving	31%	N=109	20%	N=72	20%	N=69	29%	N=101	100%	N=350
Volunteered your time to some group/activity in Alexandria	8%	N=27	6%	N=20	17%	N=59	70%	N=245	100%	N=351
Participated in a club	3%	N=12	6%	N=22	11%	N=39	79%	N=275	100%	N=347
Talked to or visited with your immediate neighbors	33%	N=117	25%	N=86	19%	N=68	23%	N=79	100%	N=350
Done a favor for a neighbor	15%	N=51	19%	N=65	37%	N=130	30%	N=103	100%	N=350

Table 9: Question 9

Thinking about local public meetings (of local elected officials like City Council or County Commissioners, advisory boards, town halls, HOA, neighborhood watch, etc.), in the last 12 months, about how many times, if at all, have you or other household members attended or watched a local public meeting?	2 times a week or more		2-4 times a month		Once a month or less		Not at all		Total	
Attended a local public meeting	1%	N=2	1%	N=3	14%	N=48	85%	N=291	100%	N=345
Watched (online or on television) a local public meeting	2%	N=7	4%	N=14	16%	N=56	78%	N=271	100%	N=347

Table 10: Question 10

Please rate the quality of each of the following services in Alexandria:	Excellent		Good		Fair		Poor		Total	
Police services	41%	N=105	49%	N=128	7%	N=19	3%	N=7	100%	N=259
Fire services	51%	N=120	45%	N=107	4%	N=9	1%	N=1	100%	N=237
Ambulance or emergency medical services	50%	N=105	45%	N=93	4%	N=9	1%	N=2	100%	N=209
Crime prevention	23%	N=56	48%	N=116	23%	N=55	7%	N=17	100%	N=244
Fire prevention and education	31%	N=60	48%	N=92	18%	N=35	3%	N=5	100%	N=192
Traffic enforcement	20%	N=53	42%	N=116	31%	N=85	7%	N=19	100%	N=274
Street repair	12%	N=38	30%	N=98	31%	N=101	27%	N=88	100%	N=325
Street cleaning	17%	N=54	46%	N=143	31%	N=98	6%	N=20	100%	N=314

The National Citizen Survey™

Please rate the quality of each of the following services in Alexandria:	Excellent		Good		Fair		Poor		Total	
Street lighting	16%	N=53	44%	N=145	31%	N=103	9%	N=31	100%	N=332
Snow removal	14%	N=41	40%	N=115	34%	N=99	11%	N=31	100%	N=286
Sidewalk maintenance	12%	N=38	40%	N=127	35%	N=110	13%	N=42	100%	N=317
Traffic signal timing	14%	N=46	38%	N=125	36%	N=120	13%	N=42	100%	N=333
Bus or transit services	27%	N=73	47%	N=128	23%	N=62	3%	N=7	100%	N=270
Garbage collection	36%	N=104	48%	N=136	13%	N=36	3%	N=9	100%	N=285
Recycling	32%	N=96	49%	N=145	12%	N=36	7%	N=21	100%	N=298
Yard waste pick-up	30%	N=61	54%	N=110	12%	N=25	4%	N=8	100%	N=205
Storm drainage	19%	N=49	51%	N=134	22%	N=58	9%	N=23	100%	N=264
Drinking water	28%	N=91	49%	N=161	16%	N=53	7%	N=22	100%	N=328
Sewer services	28%	N=80	50%	N=142	15%	N=42	7%	N=19	100%	N=284
City parks	36%	N=111	54%	N=166	10%	N=30	1%	N=2	100%	N=310
Recreation programs or classes	26%	N=49	57%	N=107	14%	N=26	2%	N=4	100%	N=186
Recreation centers or facilities	28%	N=58	55%	N=115	15%	N=32	2%	N=5	100%	N=210
Land use, planning and zoning	13%	N=31	47%	N=112	24%	N=57	16%	N=37	100%	N=237
Code enforcement (weeds, abandoned buildings, etc.)	20%	N=41	45%	N=94	28%	N=59	7%	N=14	100%	N=207
Animal control	29%	N=52	55%	N=99	13%	N=24	3%	N=5	100%	N=179
Economic development	15%	N=35	50%	N=119	30%	N=70	5%	N=12	100%	N=237
Health services	22%	N=49	54%	N=117	21%	N=47	3%	N=6	100%	N=219
Public library services	41%	N=106	47%	N=124	10%	N=26	2%	N=6	100%	N=262
Public information services	26%	N=61	52%	N=121	20%	N=47	3%	N=6	100%	N=235
Cable television	8%	N=25	23%	N=69	33%	N=97	36%	N=106	100%	N=296
Emergency preparedness (services that prepare the community for natural disasters or other emergency situations)	20%	N=36	46%	N=84	29%	N=54	5%	N=9	100%	N=184
Preservation of natural areas such as open space and greenbelts	22%	N=63	43%	N=122	28%	N=78	7%	N=20	100%	N=284
Alexandria open space	22%	N=64	42%	N=122	26%	N=74	10%	N=29	100%	N=290
City-sponsored special events	24%	N=55	51%	N=114	21%	N=48	4%	N=8	100%	N=225
Overall customer service by Alexandria employees	22%	N=57	47%	N=122	26%	N=67	5%	N=13	100%	N=260
Museums	23%	N=50	43%	N=92	28%	N=61	5%	N=12	100%	N=216
Historic preservation	30%	N=92	53%	N=158	16%	N=47	1%	N=4	100%	N=301
Street signs	20%	N=69	55%	N=186	22%	N=74	2%	N=7	100%	N=337
Elections and voting process	29%	N=79	56%	N=152	13%	N=34	2%	N=6	100%	N=271
Voter registration process	28%	N=77	53%	N=143	15%	N=42	3%	N=9	100%	N=271
Tax collection	18%	N=51	45%	N=124	27%	N=76	10%	N=27	100%	N=278

Table 11: Question 11

Overall, how would you rate the quality of the services provided by each of the following?	Excellent		Good		Fair		Poor		Total	
The City of Alexandria	21%	N=70	56%	N=184	19%	N=63	3%	N=10	100%	N=328
The Federal Government	13%	N=39	44%	N=136	31%	N=97	12%	N=36	100%	N=308

The National Citizen Survey™

Table 12: Question 12

Please rate the following categories of Alexandria government performance:	Excellent		Good		Fair		Poor		Total	
The value of services for the taxes paid to Alexandria	13%	N=40	39%	N=118	35%	N=105	14%	N=42	100%	N=305
The overall direction that Alexandria is taking	14%	N=42	45%	N=140	32%	N=100	9%	N=26	100%	N=309
The job Alexandria government does at welcoming resident involvement	14%	N=37	38%	N=101	30%	N=80	18%	N=47	100%	N=266
Overall confidence in Alexandria government	12%	N=37	42%	N=127	38%	N=115	7%	N=22	100%	N=301
Generally acting in the best interest of the community	14%	N=42	44%	N=129	29%	N=85	13%	N=38	100%	N=294
Being honest	17%	N=41	41%	N=100	28%	N=68	14%	N=33	100%	N=242
Treating all residents fairly	17%	N=44	36%	N=94	27%	N=71	20%	N=53	100%	N=262
Transparency to the public	13%	N=34	37%	N=95	32%	N=83	18%	N=46	100%	N=258

Table 13: Question 13

Please rate how important, if at all, you think it is for the Alexandria community to focus on each of the following in the coming two years:	Essential		Very important		Somewhat important		Not at all important		Total	
Overall feeling of safety in Alexandria	55%	N=191	35%	N=123	9%	N=32	1%	N=3	100%	N=349
Overall ease of getting to the places you usually have to visit	37%	N=129	45%	N=156	16%	N=55	2%	N=6	100%	N=345
Quality of overall natural environment in Alexandria	36%	N=124	48%	N=167	14%	N=49	2%	N=8	100%	N=348
Overall "built environment" of Alexandria (including overall design, buildings, parks and transportation systems)	35%	N=123	47%	N=163	16%	N=57	2%	N=6	100%	N=350
Health and wellness opportunities in Alexandria	26%	N=88	42%	N=145	29%	N=100	3%	N=9	100%	N=343
Overall opportunities for education and enrichment	32%	N=111	37%	N=128	28%	N=97	3%	N=12	100%	N=348
Overall economic health of Alexandria	45%	N=156	42%	N=146	12%	N=41	1%	N=3	100%	N=346
Sense of community	23%	N=82	45%	N=155	28%	N=96	4%	N=16	100%	N=349
Housing affordability	49%	N=171	32%	N=113	13%	N=47	5%	N=18	100%	N=349
Parking and traffic management	39%	N=135	38%	N=130	21%	N=72	3%	N=10	100%	N=346
Pre-K and child care (including access for low-income families)	37%	N=128	31%	N=108	18%	N=64	14%	N=49	100%	N=349

Table 14: Question 14

Please indicate whether or not you currently perceive barriers to living in Alexandria based on your...:	No		Yes		Total	
Age	87%	N=301	13%	N=44	100%	N=345
Gender	93%	N=319	7%	N=24	100%	N=343
Race	89%	N=301	11%	N=38	100%	N=339
National origin	94%	N=321	6%	N=21	100%	N=341
Religion	97%	N=334	3%	N=11	100%	N=345
Disability	93%	N=317	7%	N=25	100%	N=342
Sexual orientation or gender identity	96%	N=331	4%	N=13	100%	N=344

Table 15: Question 15

Have you had contact with a City of Alexandria police officer within the last 12 months?	Percent	Number
Yes	30%	N=106
No	70%	N=242
Total	100%	N=347

The National Citizen Survey™

Table 16: Question 15A

Thinking about your most recent contact, how would you rate the police officer?	Percent	Number
Excellent	63%	N=67
Good	27%	N=28
Fair	4%	N=4
Poor	7%	N=7
Total	100%	N=107

Table 17: Question 16

Do you currently have 72 hours' worth of food, water (three gallons per person), medicines, and other supplies stocked for each person in your household in case of an emergency?	Percent	Number
No	54%	N=189
Yes	46%	N=161
Total	100%	N=350

Table 18: Question 17

Have you discussed your household's emergency plan, which includes instructions for household members about where to go and what to do in the event of a disaster, with all members of your household?	Percent	Number
No	61%	N=211
Yes	39%	N=137
Total	100%	N=348

Table 19: Question 18

Do you smoke cigarettes...	Percent	Number
Every day	3%	N=9
Some days	7%	N=23
Not at all	91%	N=318
Total	100%	N=350

Table 20: Question D1

How often, if at all, do you do each of the following, considering all of the times you could?	Never		Rarely		Sometimes		Usually		Always		Total	
	Percent	Number	Percent	Number	Percent	Number	Percent	Number	Percent	Number	Percent	Number
Recycle at home	5%	N=18	7%	N=22	13%	N=43	25%	N=85	51%	N=176	100%	N=345
Purchase goods or services from a business located in Alexandria	2%	N=6	4%	N=15	21%	N=74	48%	N=166	25%	N=87	100%	N=347
Eat at least 5 portions of fruits and vegetables a day	1%	N=4	16%	N=56	40%	N=138	28%	N=97	14%	N=49	100%	N=345
Participate in moderate or vigorous physical activity	3%	N=11	9%	N=31	31%	N=108	37%	N=126	20%	N=68	100%	N=344
Read or watch local news (via television, paper, computer, etc.)	6%	N=20	10%	N=33	22%	N=76	22%	N=78	40%	N=139	100%	N=346
Vote in local elections	15%	N=51	7%	N=25	15%	N=52	18%	N=63	45%	N=155	100%	N=347

The National Citizen Survey™

Table 21: Question D2

Would you say that in general your health is:	Percent	Number
Excellent	22%	N=78
Very good	50%	N=175
Good	22%	N=78
Fair	5%	N=17
Poor	0%	N=0
Total	100%	N=348

Table 22: Question D3

What impact, if any, do you think the economy will have on your family income in the next 6 months? Do you think the impact will be:	Percent	Number
Very positive	7%	N=24
Somewhat positive	26%	N=90
Neutral	45%	N=158
Somewhat negative	19%	N=64
Very negative	3%	N=11
Total	100%	N=348

Table 23: Question D4

What is your employment status?	Percent	Number
Working full time for pay	79%	N=274
Working part time for pay	6%	N=20
Unemployed, looking for paid work	2%	N=9
Unemployed, not looking for paid work	2%	N=7
Fully retired	10%	N=35
Total	100%	N=345

Table 24: Question D5

Do you work inside the boundaries of Alexandria?	Percent	Number
Yes, outside the home	27%	N=90
Yes, from home	6%	N=21
No	67%	N=222
Total	100%	N=334

Table 25: Question D6

How many years have you lived in Alexandria?	Percent	Number
Less than 2 years	28%	N=97
2 to 5 years	22%	N=77
6 to 10 years	15%	N=52
11 to 20 years	15%	N=51
More than 20 years	21%	N=73
Total	100%	N=350

The National Citizen Survey™

Table 26: Question D7

Which best describes the building you live in?	Percent	Number
One family house detached from any other houses	16%	N=55
Building with two or more homes (duplex, townhome, apartment or condominium)	82%	N=286
Other	2%	N=8
Total	100%	N=349

Table 27: Question D8

Is this house or apartment...	Percent	Number
Rented	54%	N=190
Owned	46%	N=159
Total	100%	N=350

Table 28: Question D9

About how much is your monthly housing cost for the place you live (including rent, mortgage payment, property tax, property insurance and homeowners' association (HOA) fees)?	Percent	Number
Less than \$300 per month	1%	N=3
\$300 to \$599 per month	3%	N=9
\$600 to \$999 per month	5%	N=16
\$1,000 to \$1,499 per month	20%	N=68
\$1,500 to \$2,499 per month	43%	N=147
\$2,500 or more per month	29%	N=97
Total	100%	N=339

Table 29: Question D10

Do any children 17 or under live in your household?	Percent	Number
No	73%	N=255
Yes	27%	N=95
Total	100%	N=349

Table 30: Question D11

Are you or any other members of your household aged 65 or older?	Percent	Number
No	82%	N=286
Yes	18%	N=61
Total	100%	N=348

The National Citizen Survey™

Table 31: Question D11A

How many people (including yourself) live in your household?	Percent	Number
1	30%	N=102
2	40%	N=134
3	15%	N=50
4	10%	N=34
5	4%	N=14
6 or more	1%	N=4
Total	100%	N=338

Table 32: Question D12

How much do you anticipate your household's total income before taxes will be for the current year? (Please include in your total income money from all sources for all persons living in your household.)	Percent	Number
Less than \$25,000	9%	N=28
\$25,000 to \$49,999	14%	N=46
\$50,000 to \$99,999	24%	N=81
\$100,000 to \$149,999	25%	N=84
\$150,000 or more	28%	N=92
Total	100%	N=333

Table 33: Question D13

Are you Spanish, Hispanic or Latino?	Percent	Number
No, not Spanish, Hispanic or Latino	86%	N=293
Yes, I consider myself to be Spanish, Hispanic or Latino	14%	N=48
Total	100%	N=341

Table 34: Question D14

What is your race? (Mark one or more races to indicate what race(s) you consider yourself to be.)	Percent	Number
American Indian or Alaskan Native	1%	N=2
Asian, Asian Indian or Pacific Islander	5%	N=17
Black or African American	19%	N=62
White	67%	N=226
Other	13%	N=44

Total may exceed 100% as respondents could select more than one option.

The National Citizen Survey™

Table 35: Question D15

In which category is your age?	Percent	Number
18 to 24 years	2%	N=7
25 to 34 years	34%	N=116
35 to 44 years	21%	N=71
45 to 54 years	18%	N=62
55 to 64 years	13%	N=46
65 to 74 years	7%	N=24
75 years or older	5%	N=17
Total	100%	N=343

Table 36: Question D16

What is your sex?	Percent	Number
Female	53%	N=182
Male	47%	N=161
Total	100%	N=343

Table 37: Question D17

Do you consider a cell phone or landline your primary telephone number?	Percent	Number
Cell	75%	N=261
Land line	15%	N=53
Both	10%	N=35
Total	100%	N=350

Table 38: Question D18

Do you have access to wireless internet?	Percent	Number
No	7%	N=26
Yes	93%	N=323
Total	100%	N=349

The National Citizen Survey™

Responses including “don’t know”

The following pages contain a complete set of responses to each question on the survey, including the “don’t know” responses. The percent of respondents giving a particular response is shown followed by the number of respondents (denoted with “N=”).

Table 39: Question 1

Please rate each of the following aspects of quality of life in Alexandria:	Excellent		Good		Fair		Poor		Don't know		Total	
	%	N	%	N	%	N	%	N	%	N	%	N
Alexandria as a place to live	43%	N=151	48%	N=169	8%	N=30	0%	N=0	1%	N=3	100%	N=352
Your neighborhood as a place to live	44%	N=154	39%	N=136	15%	N=51	2%	N=9	0%	N=2	100%	N=352
Alexandria as a place to raise children	21%	N=73	33%	N=116	17%	N=59	3%	N=10	26%	N=92	100%	N=350
Alexandria as a place to work	23%	N=82	30%	N=106	12%	N=41	1%	N=4	33%	N=116	100%	N=349
Alexandria as a place to visit	53%	N=186	34%	N=120	10%	N=35	0%	N=0	3%	N=10	100%	N=351
Alexandria as a place to retire	17%	N=59	20%	N=67	22%	N=76	12%	N=42	28%	N=97	100%	N=341
The overall quality of life in Alexandria	33%	N=117	50%	N=177	17%	N=59	0%	N=0	1%	N=2	100%	N=356

Table 40: Question 2

Please rate each of the following characteristics as they relate to Alexandria as a whole:	Excellent		Good		Fair		Poor		Don't know		Total	
	%	N	%	N	%	N	%	N	%	N	%	N
Overall feeling of safety in Alexandria	20%	N=72	60%	N=210	18%	N=64	2%	N=6	0%	N=1	100%	N=352
Overall ease of getting to the places you usually have to visit	26%	N=90	47%	N=165	24%	N=85	3%	N=10	1%	N=2	100%	N=352
Quality of overall natural environment in Alexandria	21%	N=73	57%	N=199	17%	N=60	4%	N=13	1%	N=5	100%	N=350
Overall "built environment" of Alexandria (including overall design, buildings, parks and transportation systems)	15%	N=51	59%	N=206	20%	N=69	5%	N=16	2%	N=6	100%	N=347
Health and wellness opportunities in Alexandria	21%	N=74	46%	N=165	19%	N=67	2%	N=7	12%	N=43	100%	N=355
Overall opportunities for education and enrichment	16%	N=56	37%	N=131	20%	N=72	4%	N=13	23%	N=80	100%	N=352
Overall economic health of Alexandria	15%	N=53	47%	N=165	20%	N=71	1%	N=4	17%	N=59	100%	N=352
Sense of community	16%	N=55	40%	N=137	32%	N=110	7%	N=25	5%	N=18	100%	N=345
Overall image or reputation of Alexandria	32%	N=112	54%	N=187	13%	N=44	0%	N=0	2%	N=6	100%	N=349
Historic character reflected in built environment, exhibits, and events	49%	N=174	41%	N=144	6%	N=22	2%	N=7	2%	N=7	100%	N=354

Table 41: Question 3

Please indicate how likely or unlikely you are to do each of the following:	Very likely		Somewhat likely		Somewhat unlikely		Very unlikely		Don't know		Total	
	%	N	%	N	%	N	%	N	%	N	%	N
Recommend living in Alexandria to someone who asks	54%	N=191	37%	N=132	4%	N=14	3%	N=11	1%	N=5	100%	N=353
Remain in Alexandria for the next five years	46%	N=159	28%	N=97	10%	N=36	8%	N=29	8%	N=28	100%	N=348

Table 42: Question 4

Please rate how safe or unsafe you feel:	Very safe		Somewhat safe		Neither safe nor unsafe		Somewhat unsafe		Very unsafe		Don't know		Total	
	%	N	%	N	%	N	%	N	%	N	%	N	%	N
In your neighborhood during the day	66%	N=229	27%	N=94	4%	N=15	3%	N=9	0%	N=1	0%	N=1	100%	N=349
In Alexandria's downtown area (i.e. Old Town) during the day	71%	N=249	22%	N=76	3%	N=10	1%	N=3	0%	N=1	4%	N=13	100%	N=352

The National Citizen Survey™

Table 43: Question 5

Please rate each of the following characteristics as they relate to Alexandria as a whole:	Excellent		Good		Fair		Poor		Don't know		Total	
	%	N	%	N	%	N	%	N	%	N	%	N
Traffic flow on major streets	7%	N=26	35%	N=124	40%	N=140	17%	N=61	1%	N=3	100%	N=354
Ease of public parking	6%	N=21	20%	N=71	44%	N=155	27%	N=97	3%	N=11	100%	N=355
Ease of travel by car in Alexandria	11%	N=39	40%	N=141	41%	N=144	7%	N=27	1%	N=5	100%	N=355
Ease of travel by public transportation in Alexandria	14%	N=50	45%	N=160	23%	N=81	5%	N=19	12%	N=43	100%	N=354
Ease of travel by bicycle in Alexandria	13%	N=47	33%	N=116	13%	N=44	6%	N=20	36%	N=127	100%	N=355
Ease of walking in Alexandria	31%	N=111	50%	N=177	14%	N=49	3%	N=10	2%	N=7	100%	N=355
Availability of paths and walking trails	28%	N=99	45%	N=158	18%	N=63	3%	N=10	6%	N=23	100%	N=353
Air quality	21%	N=75	50%	N=178	19%	N=67	4%	N=13	6%	N=22	100%	N=355
Cleanliness of Alexandria	22%	N=77	60%	N=215	16%	N=58	1%	N=2	1%	N=4	100%	N=357
Overall appearance of Alexandria	28%	N=98	60%	N=213	11%	N=41	0%	N=2	1%	N=2	100%	N=356
Public places where people want to spend time	27%	N=96	52%	N=186	16%	N=57	1%	N=5	3%	N=11	100%	N=354
Variety of housing options	15%	N=53	32%	N=111	29%	N=103	17%	N=60	7%	N=25	100%	N=352
Availability of affordable quality housing	6%	N=20	13%	N=45	28%	N=98	40%	N=144	14%	N=48	100%	N=355
Fitness opportunities (including exercise classes and paths or trails, etc.)	24%	N=84	47%	N=165	21%	N=74	3%	N=12	6%	N=20	100%	N=355
Recreational opportunities	21%	N=77	52%	N=184	16%	N=57	3%	N=11	8%	N=28	100%	N=356
Availability of affordable quality food	21%	N=74	45%	N=156	28%	N=96	4%	N=15	2%	N=7	100%	N=348
Availability of affordable quality health care	17%	N=62	31%	N=112	26%	N=91	4%	N=15	22%	N=77	100%	N=357
Availability of preventive health services	17%	N=58	28%	N=97	22%	N=78	4%	N=13	30%	N=105	100%	N=351
Availability of affordable quality mental health care	8%	N=30	12%	N=44	15%	N=54	6%	N=21	58%	N=205	100%	N=355

Table 44: Question 6

Please rate each of the following characteristics as they relate to Alexandria as a whole:	Excellent		Good		Fair		Poor		Don't know		Total	
	%	N	%	N	%	N	%	N	%	N	%	N
Availability of affordable quality child care/preschool	5%	N=18	11%	N=38	12%	N=41	11%	N=38	61%	N=212	100%	N=348
K-12 education	8%	N=27	17%	N=59	13%	N=46	10%	N=34	52%	N=180	100%	N=346
Adult educational opportunities	9%	N=31	29%	N=102	14%	N=48	4%	N=14	44%	N=154	100%	N=348
Opportunities to attend cultural/arts/music activities	20%	N=69	45%	N=157	21%	N=75	2%	N=6	12%	N=41	100%	N=349
Employment opportunities	7%	N=26	29%	N=101	26%	N=90	6%	N=20	31%	N=109	100%	N=345
Shopping opportunities	33%	N=115	46%	N=160	19%	N=65	2%	N=7	1%	N=3	100%	N=351
Cost of living in Alexandria	3%	N=9	16%	N=54	47%	N=164	34%	N=118	1%	N=5	100%	N=349
Overall quality of business and service establishments in Alexandria	21%	N=73	54%	N=189	20%	N=71	1%	N=5	4%	N=13	100%	N=351
Vibrant downtown/commercial area	38%	N=134	45%	N=160	12%	N=44	1%	N=3	3%	N=12	100%	N=353
Overall quality of new development in Alexandria	14%	N=50	40%	N=140	24%	N=85	6%	N=22	16%	N=55	100%	N=351
Opportunities to participate in social events and activities	22%	N=79	41%	N=145	17%	N=58	4%	N=14	16%	N=55	100%	N=352
Opportunities to volunteer	22%	N=76	37%	N=131	13%	N=44	2%	N=9	26%	N=91	100%	N=351
Opportunities to participate in community matters	17%	N=59	36%	N=128	21%	N=73	3%	N=9	23%	N=83	100%	N=352
Openness and acceptance of the community toward people of diverse backgrounds	24%	N=83	39%	N=137	20%	N=72	5%	N=17	12%	N=43	100%	N=352
Neighborliness of residents in Alexandria	16%	N=55	39%	N=138	29%	N=102	9%	N=33	7%	N=24	100%	N=352

The National Citizen Survey™

Table 45: Question 7

Please indicate whether or not you have done each of the following in the last 12 months.	No		Yes		Total	
	%	N	%	N	%	N
Made efforts to conserve water	24%	N=83	76%	N=267	100%	N=350
Made efforts to make your home more energy efficient	36%	N=127	64%	N=224	100%	N=351
Observed a code violation or other hazard in Alexandria	74%	N=257	26%	N=92	100%	N=349
Household member was a victim of a crime in Alexandria	91%	N=320	9%	N=32	100%	N=353
Reported a crime to the police in Alexandria	86%	N=298	14%	N=49	100%	N=347
Contacted the City of Alexandria (in-person, phone, email or web) for help or information	51%	N=178	49%	N=171	100%	N=349
Contacted Alexandria elected officials (in-person, phone, email or web) to express your opinion	82%	N=285	18%	N=65	100%	N=349
Had the flu shot	43%	N=150	57%	N=200	100%	N=349

Table 46: Question 8

In the last 12 months, about how many times, if at all, have you or other household members done each of the following in Alexandria?	2 times a week or more		2-4 times a month		Once a month or less		Not at all		Total	
	%	N	%	N	%	N	%	N	%	N
Used Alexandria recreation centers or their services	7%	N=26	14%	N=50	29%	N=101	50%	N=174	100%	N=350
Visited a neighborhood park or City park	20%	N=70	34%	N=119	32%	N=110	15%	N=52	100%	N=350
Used Alexandria public libraries or their services	8%	N=30	22%	N=78	34%	N=118	36%	N=127	100%	N=352
Attended a City-sponsored event	1%	N=4	7%	N=25	48%	N=168	44%	N=154	100%	N=351
Used bus, rail, subway or other public transportation instead of driving	31%	N=109	20%	N=70	32%	N=113	17%	N=61	100%	N=353
Carpooled with other adults or children instead of driving alone	12%	N=41	13%	N=43	14%	N=47	62%	N=214	100%	N=345
Walked or biked instead of driving	31%	N=109	20%	N=72	20%	N=69	29%	N=101	100%	N=350
Volunteered your time to some group/activity in Alexandria	8%	N=27	6%	N=20	17%	N=59	70%	N=245	100%	N=351
Participated in a club	3%	N=12	6%	N=22	11%	N=39	79%	N=275	100%	N=347
Talked to or visited with your immediate neighbors	33%	N=117	25%	N=86	19%	N=68	23%	N=79	100%	N=350
Done a favor for a neighbor	15%	N=51	19%	N=65	37%	N=130	30%	N=103	100%	N=350

Table 47: Question 9

Thinking about local public meetings (of local elected officials like City Council or County Commissioners, advisory boards, town halls, HOA, neighborhood watch, etc.), in the last 12 months, about how many times, if at all, have you or other household members attended or watched a local public meeting?	2 times a week or more		2-4 times a month		Once a month or less		Not at all		Total	
	%	N	%	N	%	N	%	N	%	N
Attended a local public meeting	1%	N=2	1%	N=3	14%	N=48	85%	N=291	100%	N=345
Watched (online or on television) a local public meeting	2%	N=7	4%	N=14	16%	N=56	78%	N=271	100%	N=347

Table 48: Question 10

Please rate the quality of each of the following services in Alexandria:	Excellent		Good		Fair		Poor		Don't know		Total	
	%	N	%	N	%	N	%	N	%	N	%	N
Police services	30%	N=105	37%	N=128	5%	N=19	2%	N=7	25%	N=88	100%	N=347
Fire services	35%	N=120	31%	N=107	3%	N=9	0%	N=1	32%	N=110	100%	N=347
Ambulance or emergency medical services	31%	N=105	27%	N=93	2%	N=9	1%	N=2	39%	N=133	100%	N=342
Crime prevention	16%	N=56	34%	N=116	16%	N=55	5%	N=17	29%	N=102	100%	N=345
Fire prevention and education	17%	N=60	27%	N=92	10%	N=35	1%	N=5	45%	N=155	100%	N=347
Traffic enforcement	15%	N=53	34%	N=116	25%	N=85	5%	N=19	21%	N=72	100%	N=345
Street repair	11%	N=38	28%	N=98	29%	N=101	25%	N=88	6%	N=22	100%	N=347
Street cleaning	16%	N=54	42%	N=143	28%	N=98	6%	N=20	9%	N=31	100%	N=345

The National Citizen Survey™

Please rate the quality of each of the following services in Alexandria:	Excellent		Good		Fair		Poor		Don't know		Total	
Street lighting	15%	N=53	42%	N=145	30%	N=103	9%	N=31	4%	N=14	100%	N=346
Snow removal	12%	N=41	33%	N=115	28%	N=99	9%	N=31	18%	N=61	100%	N=347
Sidewalk maintenance	11%	N=38	37%	N=127	32%	N=110	12%	N=42	7%	N=26	100%	N=343
Traffic signal timing	13%	N=46	36%	N=125	35%	N=120	12%	N=42	3%	N=12	100%	N=345
Bus or transit services	21%	N=73	37%	N=128	18%	N=62	2%	N=7	21%	N=74	100%	N=343
Garbage collection	30%	N=104	39%	N=136	11%	N=36	3%	N=9	18%	N=61	100%	N=347
Recycling	28%	N=96	42%	N=145	10%	N=36	6%	N=21	14%	N=49	100%	N=347
Yard waste pick-up	18%	N=61	32%	N=110	7%	N=25	2%	N=8	41%	N=140	100%	N=345
Storm drainage	14%	N=49	39%	N=134	17%	N=58	7%	N=23	24%	N=82	100%	N=346
Drinking water	26%	N=91	46%	N=161	15%	N=53	6%	N=22	6%	N=20	100%	N=348
Sewer services	23%	N=80	41%	N=142	12%	N=42	6%	N=19	18%	N=62	100%	N=346
City parks	33%	N=111	49%	N=166	9%	N=30	1%	N=2	9%	N=32	100%	N=342
Recreation programs or classes	14%	N=49	31%	N=107	8%	N=26	1%	N=4	46%	N=157	100%	N=344
Recreation centers or facilities	17%	N=58	34%	N=115	9%	N=32	1%	N=5	39%	N=133	100%	N=343
Land use, planning and zoning	9%	N=31	33%	N=112	17%	N=57	11%	N=37	30%	N=104	100%	N=340
Code enforcement (weeds, abandoned buildings, etc.)	12%	N=41	27%	N=94	17%	N=59	4%	N=14	40%	N=136	100%	N=344
Animal control	15%	N=52	29%	N=99	7%	N=24	1%	N=5	48%	N=165	100%	N=343
Economic development	10%	N=35	35%	N=119	21%	N=70	4%	N=12	31%	N=106	100%	N=343
Health services	14%	N=49	34%	N=117	14%	N=47	2%	N=6	36%	N=124	100%	N=344
Public library services	31%	N=106	36%	N=124	8%	N=26	2%	N=6	24%	N=81	100%	N=344
Public information services	18%	N=61	35%	N=121	14%	N=47	2%	N=6	32%	N=109	100%	N=344
Cable television	7%	N=25	20%	N=69	28%	N=97	31%	N=106	14%	N=49	100%	N=345
Emergency preparedness (services that prepare the community for natural disasters or other emergency situations)	10%	N=36	24%	N=84	16%	N=54	3%	N=9	47%	N=162	100%	N=345
Preservation of natural areas such as open space and greenbelts	18%	N=63	35%	N=122	23%	N=78	6%	N=20	18%	N=60	100%	N=344
Alexandria open space	19%	N=64	35%	N=122	21%	N=74	8%	N=29	16%	N=56	100%	N=346
City-sponsored special events	16%	N=55	33%	N=114	14%	N=48	2%	N=8	35%	N=120	100%	N=344
Overall customer service by Alexandria employees	17%	N=57	35%	N=122	19%	N=67	4%	N=13	25%	N=86	100%	N=345
Museums	15%	N=50	27%	N=92	18%	N=61	3%	N=12	37%	N=128	100%	N=344
Historic preservation	27%	N=92	47%	N=158	14%	N=47	1%	N=4	11%	N=38	100%	N=339
Street signs	20%	N=69	54%	N=186	21%	N=74	2%	N=7	2%	N=9	100%	N=345
Elections and voting process	23%	N=79	44%	N=152	10%	N=34	2%	N=6	22%	N=76	100%	N=347
Voter registration process	22%	N=77	41%	N=143	12%	N=42	3%	N=9	22%	N=76	100%	N=347
Tax collection	15%	N=51	36%	N=124	22%	N=76	8%	N=27	19%	N=66	100%	N=344

Table 49: Question 11

Overall, how would you rate the quality of the services provided by each of the following?	Excellent		Good		Fair		Poor		Don't know		Total	
The City of Alexandria	20%	N=70	53%	N=184	18%	N=63	3%	N=10	6%	N=20	100%	N=348
The Federal Government	12%	N=39	40%	N=136	28%	N=97	11%	N=36	10%	N=34	100%	N=342

The National Citizen Survey™

Table 50: Question 12

Please rate the following categories of Alexandria government performance:	Excellent		Good		Fair		Poor		Don't know		Total	
The value of services for the taxes paid to Alexandria	12%	N=40	34%	N=118	30%	N=105	12%	N=42	12%	N=42	100%	N=346
The overall direction that Alexandria is taking	12%	N=42	40%	N=140	29%	N=100	8%	N=26	11%	N=38	100%	N=347
The job Alexandria government does at welcoming resident involvement	11%	N=37	29%	N=101	23%	N=80	14%	N=47	24%	N=82	100%	N=347
Overall confidence in Alexandria government	11%	N=37	37%	N=127	33%	N=115	6%	N=22	13%	N=46	100%	N=346
Generally acting in the best interest of the community	12%	N=42	37%	N=129	24%	N=85	11%	N=38	15%	N=53	100%	N=347
Being honest	12%	N=41	29%	N=100	20%	N=68	10%	N=33	30%	N=104	100%	N=346
Treating all residents fairly	13%	N=44	27%	N=94	21%	N=71	16%	N=53	24%	N=82	100%	N=344
Transparency to the public	10%	N=34	27%	N=95	24%	N=83	13%	N=46	26%	N=89	100%	N=347

Table 51: Question 13

Please rate how important, if at all, you think it is for the Alexandria community to focus on each of the following in the coming two years:	Essential		Very important		Somewhat important		Not at all important		Total	
Overall feeling of safety in Alexandria	55%	N=191	35%	N=123	9%	N=32	1%	N=3	100%	N=349
Overall ease of getting to the places you usually have to visit	37%	N=129	45%	N=156	16%	N=55	2%	N=6	100%	N=345
Quality of overall natural environment in Alexandria	36%	N=124	48%	N=167	14%	N=49	2%	N=8	100%	N=348
Overall "built environment" of Alexandria (including overall design, buildings, parks and transportation systems)	35%	N=123	47%	N=163	16%	N=57	2%	N=6	100%	N=350
Health and wellness opportunities in Alexandria	26%	N=88	42%	N=145	29%	N=100	3%	N=9	100%	N=343
Overall opportunities for education and enrichment	32%	N=111	37%	N=128	28%	N=97	3%	N=12	100%	N=348
Overall economic health of Alexandria	45%	N=156	42%	N=146	12%	N=41	1%	N=3	100%	N=346
Sense of community	23%	N=82	45%	N=155	28%	N=96	4%	N=16	100%	N=349
Housing affordability	49%	N=171	32%	N=113	13%	N=47	5%	N=18	100%	N=349
Parking and traffic management	39%	N=135	38%	N=130	21%	N=72	3%	N=10	100%	N=346
Pre-K and child care (including access for low-income families)	37%	N=128	31%	N=108	18%	N=64	14%	N=49	100%	N=349

Table 52: Question 14

Please indicate whether or not you currently perceive barriers to living in Alexandria based on your...:	No		Yes		Total	
Age	87%	N=301	13%	N=44	100%	N=345
Gender	93%	N=319	7%	N=24	100%	N=343
Race	89%	N=301	11%	N=38	100%	N=339
National origin	94%	N=321	6%	N=21	100%	N=341
Religion	97%	N=334	3%	N=11	100%	N=345
Disability	93%	N=317	7%	N=25	100%	N=342
Sexual orientation or gender identity	96%	N=331	4%	N=13	100%	N=344

Table 53: Question 15

Have you had contact with a City of Alexandria police officer within the last 12 months?	Percent	Number
Yes	30%	N=106
No	70%	N=242
Total	100%	N=347

The National Citizen Survey™

Table 54: Question 15A

Thinking about your most recent contact, how would you rate the police officer?	Percent	Number
Excellent	63%	N=67
Good	27%	N=28
Fair	4%	N=4
Poor	7%	N=7
Don't know	0%	N=0
Total	100%	N=107

Table 55: Question 16

Do you currently have 72 hours' worth of food, water (three gallons per person), medicines, and other supplies stocked for each person in your household in case of an emergency?	Percent	Number
No	54%	N=189
Yes	46%	N=161
Total	100%	N=350

Table 56: Question 17

Have you discussed your household's emergency plan, which includes instructions for household members about where to go and what to do in the event of a disaster, with all members of your household?	Percent	Number
No	61%	N=211
Yes	39%	N=137
Total	100%	N=348

Table 57: Question 18

Do you smoke cigarettes...	Percent	Number
Every day	3%	N=9
Some days	7%	N=23
Not at all	91%	N=318
Total	100%	N=350

Table 58: Question D1

How often, if at all, do you do each of the following, considering all of the times you could?	Never		Rarely		Sometimes		Usually		Always		Total	
	Percent	Number	Percent	Number	Percent	Number	Percent	Number	Percent	Number	Percent	Number
Recycle at home	5%	N=18	7%	N=22	13%	N=43	25%	N=85	51%	N=176	100%	N=345
Purchase goods or services from a business located in Alexandria	2%	N=6	4%	N=15	21%	N=74	48%	N=166	25%	N=87	100%	N=347
Eat at least 5 portions of fruits and vegetables a day	1%	N=4	16%	N=56	40%	N=138	28%	N=97	14%	N=49	100%	N=345
Participate in moderate or vigorous physical activity	3%	N=11	9%	N=31	31%	N=108	37%	N=126	20%	N=68	100%	N=344
Read or watch local news (via television, paper, computer, etc.)	6%	N=20	10%	N=33	22%	N=76	22%	N=78	40%	N=139	100%	N=346
Vote in local elections	15%	N=51	7%	N=25	15%	N=52	18%	N=63	45%	N=155	100%	N=347

The National Citizen Survey™

Table 59: Question D2

Would you say that in general your health is:	Percent	Number
Excellent	22%	N=78
Very good	50%	N=175
Good	22%	N=78
Fair	5%	N=17
Poor	0%	N=0
Total	100%	N=348

Table 60: Question D3

What impact, if any, do you think the economy will have on your family income in the next 6 months? Do you think the impact will be:	Percent	Number
Very positive	7%	N=24
Somewhat positive	26%	N=90
Neutral	45%	N=158
Somewhat negative	19%	N=64
Very negative	3%	N=11
Total	100%	N=348

Table 61: Question D4

What is your employment status?	Percent	Number
Working full time for pay	79%	N=274
Working part time for pay	6%	N=20
Unemployed, looking for paid work	2%	N=9
Unemployed, not looking for paid work	2%	N=7
Fully retired	10%	N=35
Total	100%	N=345

Table 62: Question D5

Do you work inside the boundaries of Alexandria?	Percent	Number
Yes, outside the home	27%	N=90
Yes, from home	6%	N=21
No	67%	N=222
Total	100%	N=334

Table 63: Question D6

How many years have you lived in Alexandria?	Percent	Number
Less than 2 years	28%	N=97
2 to 5 years	22%	N=77
6 to 10 years	15%	N=52
11 to 20 years	15%	N=51
More than 20 years	21%	N=73
Total	100%	N=350

The National Citizen Survey™

Table 64: Question D7

Which best describes the building you live in?	Percent	Number
One family house detached from any other houses	16%	N=55
Building with two or more homes (duplex, townhome, apartment or condominium)	82%	N=286
Other	2%	N=8
Total	100%	N=349

Table 65: Question D8

Is this house or apartment...	Percent	Number
Rented	54%	N=190
Owned	46%	N=159
Total	100%	N=350

Table 66: Question D9

About how much is your monthly housing cost for the place you live (including rent, mortgage payment, property tax, property insurance and homeowners' association (HOA) fees)?	Percent	Number
Less than \$300 per month	1%	N=3
\$300 to \$599 per month	3%	N=9
\$600 to \$999 per month	5%	N=16
\$1,000 to \$1,499 per month	20%	N=68
\$1,500 to \$2,499 per month	43%	N=147
\$2,500 or more per month	29%	N=97
Total	100%	N=339

Table 67: Question D10

Do any children 17 or under live in your household?	Percent	Number
No	73%	N=255
Yes	27%	N=95
Total	100%	N=349

Table 68: Question D11

Are you or any other members of your household aged 65 or older?	Percent	Number
No	82%	N=286
Yes	18%	N=61
Total	100%	N=348

The National Citizen Survey™

Table 69: Question D11A

How many people (including yourself) live in your household?	Percent	Number
1	30%	N=102
2	40%	N=134
3	15%	N=50
4	10%	N=34
5	4%	N=14
6 or more	1%	N=4
Total	100%	N=338

Table 70: Question D12

How much do you anticipate your household's total income before taxes will be for the current year? (Please include in your total income money from all sources for all persons living in your household.)	Percent	Number
Less than \$25,000	9%	N=28
\$25,000 to \$49,999	14%	N=46
\$50,000 to \$99,999	24%	N=81
\$100,000 to \$149,999	25%	N=84
\$150,000 or more	28%	N=92
Total	100%	N=333

Table 71: Question D13

Are you Spanish, Hispanic or Latino?	Percent	Number
No, not Spanish, Hispanic or Latino	86%	N=293
Yes, I consider myself to be Spanish, Hispanic or Latino	14%	N=48
Total	100%	N=341

Table 72: Question D14

What is your race? (Mark one or more races to indicate what race(s) you consider yourself to be.)	Percent	Number
American Indian or Alaskan Native	1%	N=2
Asian, Asian Indian or Pacific Islander	5%	N=17
Black or African American	19%	N=62
White	67%	N=226
Other	13%	N=44

Total may exceed 100% as respondents could select more than one option.

The National Citizen Survey™

Table 73: Question D15

In which category is your age?	Percent	Number
18 to 24 years	2%	N=7
25 to 34 years	34%	N=116
35 to 44 years	21%	N=71
45 to 54 years	18%	N=62
55 to 64 years	13%	N=46
65 to 74 years	7%	N=24
75 years or older	5%	N=17
Total	100%	N=343

Table 74: Question D16

What is your sex?	Percent	Number
Female	53%	N=182
Male	47%	N=161
Total	100%	N=343

Table 75: Question D17

Do you consider a cell phone or landline your primary telephone number?	Percent	Number
Cell	75%	N=261
Land line	15%	N=53
Both	10%	N=35
Total	100%	N=350

Table 76: Question D18

Do you have access to wireless internet?	Percent	Number
No	7%	N=26
Yes	93%	N=323
Total	100%	N=349

Appendix B: Benchmark Comparisons

Comparison Data

NRC’s database of comparative resident opinion is comprised of resident perspectives gathered in surveys from over 500 communities whose residents evaluated the same kinds of topics on The National Citizen Survey™. The comparison evaluations are from the most recent survey completed in each community; most communities conduct surveys every year or in alternating years. NRC adds the latest results quickly upon survey completion, keeping the benchmark data fresh and relevant. The communities in the database represent a wide geographic and population range. The City of Alexandria chose to have comparisons made to the entire database and subsets of similar jurisdictions from the database. The first subset included other jurisdictions near Washington, D.C. and the second subset consisted of jurisdictions across the nation with populations between 80,000 to 180,000 and were in close proximity to major metropolitan areas.

Interpreting the Results

Ratings are compared when there are at least five communities in which a similar question was asked. Where comparisons are available, four columns are provided in the table. The first column is Alexandria’s “percent positive.” The percent positive is the combination of the top two most positive response options (i.e., “excellent” and “good,” “very safe” and “somewhat safe,” “essential” and “very important,” etc.), or, in the case of resident behaviors/participation, the percent positive represents the proportion of respondents indicating “yes” or participating in an activity at least once a month. The second column is the rank assigned to Alexandria’s rating among communities where a similar question was asked. The third column is the number of communities that asked a similar question. The final column shows the comparison of Alexandria’s rating to the benchmark.

In that final column, Alexandria’s results are noted as being “higher” than the benchmark, “lower” than the benchmark or “similar” to the benchmark, meaning that the average rating given by Alexandria residents is statistically similar to or different (greater or lesser) than the benchmark. More extreme differences are noted as “much higher” or “much lower.”

Benchmark Database Characteristics	
Region	Percent
New England	3%
Middle Atlantic	5%
East North Central	15%
West North Central	13%
South Atlantic	22%
East South Central	3%
West South Central	7%
Mountain	16%
Pacific	16%
Population	Percent
Less than 10,000	10%
10,000 to 24,999	22%
25,000 to 49,999	23%
50,000 to 99,999	22%
100,000 or more	23%

National Benchmark Comparisons

Table 77: Community Characteristics General

	Percent positive	Rank	Number of communities in comparison	Comparison to benchmark
The overall quality of life in Alexandria	83%	168	402	Similar
Overall image or reputation of Alexandria	87%	72	301	Higher
Alexandria as a place to live	91%	128	345	Similar
Your neighborhood as a place to live	83%	104	267	Similar
Alexandria as a place to raise children	73%	223	336	Similar
Alexandria as a place to retire	52%	240	319	Similar
Overall appearance of Alexandria	88%	67	314	Similar

Table 78: Community Characteristics by Facet

		Percent positive	Rank	Number of communities in comparison	Comparison to benchmark
Safety	Overall feeling of safety in Alexandria	80%	143	234	Similar
	In your neighborhood during the day	93%	168	307	Similar
	In Alexandria's downtown area (i.e. Old Town) during the day	96%	65	261	Similar
Mobility	Overall ease of getting to the places you usually have to visit	73%	76	150	Similar
	Availability of paths and walking trails	78%	60	270	Higher
	Ease of walking in Alexandria	83%	49	251	Higher
	Ease of travel by bicycle in Alexandria	72%	56	255	Higher
	Ease of travel by public transportation in Alexandria	68%	17	132	Higher
	Ease of travel by car in Alexandria	51%	186	258	Similar
	Ease of public parking	27%	111	125	Lower
Natural Environment	Traffic flow on major streets	43%	198	304	Similar
	Quality of overall natural environment in Alexandria	79%	131	239	Similar
	Cleanliness of Alexandria	83%	97	232	Similar
Built Environment	Air quality	76%	109	215	Similar
	Overall "built environment" of Alexandria (including overall design, buildings, parks and transportation systems)	75%	42	144	Similar
	Overall quality of new development in Alexandria	64%	75	247	Similar
	Availability of affordable quality housing	21%	236	259	Lower
	Variety of housing options	50%	164	238	Similar
Economy	Public places where people want to spend time	82%	24	137	Higher
	Overall economic health of Alexandria	74%	53	149	Similar
	Vibrant downtown/commercial area	86%	5	134	Much higher
	Overall quality of business and service establishments in Alexandria	78%	33	232	Similar
	Cost of living in Alexandria	18%	130	143	Lower
	Shopping opportunities	79%	28	257	Higher
	Employment opportunities	53%	34	271	Higher
	Alexandria as a place to visit	90%	14	156	Much higher
	Alexandria as a place to work	81%	38	310	Higher
	Recreation and Wellness	Health and wellness opportunities in Alexandria	76%	63	146
Availability of affordable quality mental health care		50%	35	124	Similar
Availability of preventive health services		63%	74	196	Similar
Availability of affordable quality health care		62%	77	220	Similar
Availability of affordable quality food		67%	78	196	Similar
	Recreational opportunities	79%	80	263	Similar

The National Citizen Survey™

		Percent positive	Rank	Number of communities in comparison	Comparison to benchmark
	Fitness opportunities (including exercise classes and paths or trails, etc.)	74%	52	140	Similar
Education and Enrichment	Overall opportunities for education and enrichment	69%	76	144	Similar
	Opportunities to attend cultural/arts/music activities	74%	53	256	Higher
	Adult educational opportunities	68%	48	130	Similar
	K-12 education	52%	185	229	Lower
	Availability of affordable quality child care/preschool	42%	174	218	Similar
Community Engagement	Opportunities to participate in social events and activities	75%	34	219	Similar
	Neighborliness of Alexandria	59%	78	139	Similar
	Openness and acceptance of the community toward people of diverse backgrounds	71%	35	249	Similar
	Opportunities to participate in community matters	69%	56	232	Similar
	Opportunities to volunteer	80%	53	226	Similar

Table 79: Governance General

	Percent positive	Rank	Number of communities in comparison	Comparison to benchmark
Services provided by the City of Alexandria	78%	177	390	Similar
Overall customer service by Alexandria employees	69%	225	325	Similar
Value of services for the taxes paid to Alexandria	52%	194	351	Similar
Overall direction that Alexandria is taking	59%	135	282	Similar
Job Alexandria government does at welcoming resident involvement	52%	140	269	Similar
Overall confidence in Alexandria government	54%	58	144	Similar
Generally acting in the best interest of the community	58%	66	144	Similar
Being honest	58%	67	140	Similar
Treating all residents fairly	53%	75	143	Similar
Services provided by the Federal Government	57%	1	210	Higher

Table 80: Governance by Facet

		Percent positive	Rank	Number of communities in comparison	Comparison to benchmark	
Safety	Police services	90%	77	387	Similar	
	Fire services	96%	83	314	Similar	
	Ambulance or emergency medical services	95%	76	303	Similar	
	Crime prevention	71%	159	311	Similar	
	Fire prevention and education	79%	108	248	Similar	
	Animal control	84%	8	299	Higher	
	Emergency preparedness (services that prepare the community for natural disasters or other emergency situations)	65%	93	244	Similar	
	Mobility	Traffic enforcement	62%	161	331	Similar
		Street repair	42%	253	376	Similar
		Street cleaning	63%	136	280	Similar
Street lighting		60%	133	275	Similar	
Snow removal		55%	174	262	Similar	
Sidewalk maintenance		52%	151	279	Similar	
Traffic signal timing		51%	81	220	Similar	
Natural Environment	Bus or transit services	74%	10	188	Higher	
	Garbage collection	84%	163	312	Similar	
	Recycling	81%	185	318	Similar	
	Yard waste pick-up	84%	79	231	Similar	

The National Citizen Survey™

		Percent positive	Rank	Number of communities in comparison	Comparison to benchmark
	Drinking water	77%	114	296	Similar
	Preservation of natural areas such as open space and greenbelts	65%	70	222	Similar
	Alexandria open space	64%	53	135	Similar
Built Environment	Storm drainage	69%	129	319	Similar
	Sewer services	78%	125	280	Similar
	Land use, planning and zoning	60%	75	259	Similar
	Code enforcement (weeds, abandoned buildings, etc.)	65%	55	319	Higher
Economy	Cable television	32%	166	167	Lower
Recreation and Wellness	Economic development	65%	56	247	Similar
	City parks	90%	85	289	Similar
	Recreation programs or classes	84%	95	302	Similar
	Recreation centers or facilities	83%	65	246	Similar
Education and Enrichment	Health services	76%	43	172	Similar
	City-sponsored special events	75%	42	153	Similar
Community Engagement	Public library services	88%	116	305	Similar
	Public information services	78%	50	252	Similar

Table 81: Participation General

	Percent positive	Rank	Number of communities in comparison	Comparison to benchmark
Sense of community	59%	162	266	Similar
Recommend living in Alexandria to someone who asks	93%	75	240	Similar
Remain in Alexandria for the next five years	80%	169	235	Similar
Contacted Alexandria (in-person, phone, email or web) for help or information	49%	97	272	Similar

Table 82: Participation by Facet

		Percent positive	Rank	Number of communities in comparison	Comparison to benchmark
Safety	Did NOT report a crime to the police	86%	26	140	Similar
	Household member was NOT a victim of a crime	91%	79	232	Similar
Mobility	Used bus, rail, subway or other public transportation instead of driving	83%	2	116	Much higher
	Carpooled with other adults or children instead of driving alone	38%	101	134	Similar
	Walked or biked instead of driving	71%	28	139	Higher
Natural Environment	Made efforts to conserve water	76%	104	130	Similar
	Made efforts to make your home more energy efficient	64%	129	130	Lower
Built Environment	Recycle at home	88%	112	219	Similar
	Did NOT observe a code violation or other hazard in Alexandria	74%	9	132	Much higher
Economy	NOT experiencing housing costs stress	56%	190	215	Lower
	Purchase goods or services from a business located in Alexandria	94%	112	136	Similar
	Economy will have positive impact on income	33%	46	217	Similar
Recreation and Wellness	Work inside boundaries of Alexandria	33%	82	136	Similar
	Used Alexandria recreation centers or their services	50%	155	204	Similar
	Visited a neighborhood park or City park	85%	104	235	Similar

The National Citizen Survey™

		Percent positive	Rank	Number of communities in comparison	Comparison to benchmark
	Eat at least 5 portions of fruits and vegetables a day	83%	74	133	Similar
	Participate in moderate or vigorous physical activity	88%	34	134	Similar
	In very good to excellent health	73%	33	135	Similar
Education and Enrichment	Used Alexandria public libraries or their services	64%	119	205	Similar
	Attended City-sponsored event	56%	52	137	Similar
Community Engagement	Contacted Alexandria elected officials (in-person, phone, email or web) to express your opinion	18%	50	134	Similar
	Volunteered your time to some group/activity in Alexandria	30%	176	224	Lower
	Participated in a club	21%	156	202	Similar
	Talked to or visited with your immediate neighbors	77%	134	135	Lower
	Done a favor for a neighbor	70%	127	131	Lower
	Attended a local public meeting	15%	179	224	Similar
	Watched (online or on television) a local public meeting	22%	125	188	Similar
	Read or watch local news (via television, paper, computer, etc.)	85%	89	135	Similar
	Vote in local elections	78%	135	217	Similar

Communities included in national comparisons

The communities included in Alexandria’s comparisons are listed on the following pages along with their population according to the 2010 Census.

Adams County, CO.....	441,603	Baltimore city, MD.....	620,961
Airway Heights city, WA.....	6,114	Bartonville town, TX.....	1,469
Albany city, OR.....	50,158	Battle Creek city, MI.....	52,347
Albemarle County, VA.....	98,970	Bay City city, MI.....	34,932
Albert Lea city, MN.....	18,016	Baytown city, TX.....	71,802
Alexandria city, VA.....	139,966	Bedford city, TX.....	46,979
Algonquin village, IL.....	30,046	Bedford town, MA.....	13,320
Aliso Viejo city, CA.....	47,823	Bellevue city, WA.....	122,363
Altoona city, IA.....	14,541	Bellingham city, WA.....	80,885
American Canyon city, CA.....	19,454	Beltrami County, MN.....	44,442
Ames city, IA.....	58,965	Benbrook city, TX.....	21,234
Andover CDP, MA.....	8,762	Bend city, OR.....	76,639
Ankeny city, IA.....	45,582	Benicia city, CA.....	26,997
Ann Arbor city, MI.....	113,934	Bettendorf city, IA.....	33,217
Annapolis city, MD.....	38,394	Billings city, MT.....	104,170
Apache Junction city, AZ.....	35,840	Blaine city, MN.....	57,186
Apple Valley town, CA.....	69,135	Bloomfield Hills city, MI.....	3,869
Arapahoe County, CO.....	572,003	Bloomington city, MN.....	82,893
Arkansas City city, AR.....	366	Blue Springs city, MO.....	52,575
Arlington city, TX.....	365,438	Boise City city, ID.....	205,671
Arlington County, VA.....	207,627	Boone County, KY.....	118,811
Arvada city, CO.....	106,433	Boulder city, CO.....	97,385
Asheville city, NC.....	83,393	Bowling Green city, KY.....	58,067
Ashland city, OR.....	20,078	Bozeman city, MT.....	37,280
Ashland town, VA.....	7,225	Brentwood city, MO.....	8,055
Aspen city, CO.....	6,658	Brentwood city, TN.....	37,060
Auburn city, AL.....	53,380	Brighton city, CO.....	33,352
Auburn city, WA.....	70,180	Bristol city, TN.....	26,702
Augusta CCD, GA.....	134,777	Broken Arrow city, OK.....	98,850
Aurora city, CO.....	325,078	Brookfield city, WI.....	37,920
Austin city, TX.....	790,390	Brookline CDP, MA.....	58,732
Bainbridge Island city, WA.....	23,025	Broomfield city, CO.....	55,889

The National Citizen Survey™

Brownsburg town, IN	21,285	Del Mar city, CA	4,161
Bryan city, TX	76,201	Delray Beach city, FL	60,522
Burien city, WA	33,313	Denison city, TX	22,682
Burleson city, TX	36,690	Denton city, TX	113,383
Cabarrus County, NC	178,011	Denver city, CO	600,158
Cambridge city, MA	105,162	Derby city, KS	22,158
Canton city, SD	3,057	Des Peres city, MO	8,373
Cape Coral city, FL	154,305	Destin city, FL	12,305
Cape Girardeau city, MO	37,941	Dorchester County, MD	32,618
Carlisle borough, PA	18,682	Dothan city, AL	65,496
Carlsbad city, CA	105,328	Douglas County, CO	285,465
Carroll city, IA	10,103	Dover city, NH	29,987
Cartersville city, GA	19,731	Dublin city, CA	46,036
Cary town, NC	135,234	Duluth city, MN	86,265
Casa Grande city, AZ	48,571	Duncanville city, TX	38,524
Casper city, WY	55,316	Durham city, NC	228,330
Castine town, ME	1,366	Eagle town, CO	6,508
Castle Pines North city, CO	10,360	East Baton Rouge Parish, LA	440,171
Castle Rock town, CO	48,231	East Grand Forks city, MN	8,601
Centennial city, CO	100,377	East Lansing city, MI	48,579
Centralia city, IL	13,032	Eau Claire city, WI	65,883
Chambersburg borough, PA	20,268	Eden Prairie city, MN	60,797
Chandler city, AZ	236,123	Edgerton city, KS	1,671
Chanhassen city, MN	22,952	Edgewater city, CO	5,170
Chapel Hill town, NC	57,233	Edina city, MN	47,941
Charlotte city, NC	731,424	Edmond city, OK	81,405
Charlotte County, FL	159,978	Edmonds city, WA	39,709
Charlottesville city, VA	43,475	El Cerrito city, CA	23,549
Chattanooga city, TN	167,674	El Dorado County, CA	181,058
Chesterfield County, VA	316,236	El Paso city, TX	649,121
Chippewa Falls city, WI	13,661	Elk Grove city, CA	153,015
Citrus Heights city, CA	83,301	Elk River city, MN	22,974
Clackamas County, OR	375,992	Elko New Market city, MN	4,110
Clarendon Hills village, IL	8,427	Elmhurst city, IL	44,121
Clayton city, MO	15,939	Encinitas city, CA	59,518
Clearwater city, FL	107,685	Englewood city, CO	30,255
Cleveland Heights city, OH	46,121	Erie town, CO	18,135
Clinton city, SC	8,490	Escambia County, FL	297,619
Clive city, IA	15,447	Estes Park town, CO	5,858
Clovis city, CA	95,631	Fairview town, TX	7,248
College Park city, MD	30,413	Farmington Hills city, MI	79,740
College Station city, TX	93,857	Fayetteville city, NC	200,564
Colleyville city, TX	22,807	Fishers town, IN	76,794
Collinsville city, IL	25,579	Flower Mound town, TX	64,669
Columbia city, MO	108,500	Forest Grove city, OR	21,083
Columbia city, SC	129,272	Fort Collins city, CO	143,986
Columbia Falls city, MT	4,688	Fort Smith city, AR	86,209
Columbus city, WI	4,991	Fort Worth city, TX	741,206
Commerce City city, CO	45,913	Fountain Hills town, AZ	22,489
Concord city, CA	122,067	Franklin city, TN	62,487
Concord town, MA	17,668	Fredericksburg city, VA	24,286
Cookeville city, TN	30,435	Fremont city, CA	214,089
Coon Rapids city, MN	61,476	Friendswood city, TX	35,805
Copperas Cove city, TX	32,032	Fruita city, CO	12,646
Coronado city, CA	18,912	Gahanna city, OH	33,248
Corvallis city, OR	54,462	Gaithersburg city, MD	59,933
Creve Coeur city, MO	17,833	Galveston city, TX	47,743
Cross Roads town, TX	1,563	Gardner city, KS	19,123
Crystal Lake city, IL	40,743	Geneva city, NY	13,261
Dacono city, CO	4,152	Georgetown city, TX	47,400
Dade City city, FL	6,437	Gilbert town, AZ	208,453
Dakota County, MN	398,552	Gillette city, WY	29,087
Dallas city, OR	14,583	Glendora city, CA	50,073
Dallas city, TX	1,197,816	Glenview village, IL	44,692
Danville city, KY	16,218	Globe city, AZ	7,532
Dardenne Prairie city, MO	11,494	Golden Valley city, MN	20,371
Davenport city, IA	99,685	Goodyear city, AZ	65,275
Davidson town, NC	10,944	Grafton village, WI	11,459
Dayton city, OH	141,527	Grand Blanc city, MI	8,276
Decatur city, GA	19,335	Grand Island city, NE	48,520

The National Citizen Survey™

Grass Valley city, CA	12,860	Lafayette city, CO	24,453
Greeley city, CO	92,889	Laguna Beach city, CA	22,723
Green Valley CDP, AZ	21,391	Laguna Hills city, CA	30,344
Greenville city, NC	84,554	Laguna Niguel city, CA	62,979
Greenwich town, CT	61,171	Lake Oswego city, OR	36,619
Greenwood Village city, CO	13,925	Lake Stevens city, WA	28,069
Greer city, SC	25,515	Lake Worth city, FL	34,910
Guilford County, NC	488,406	Lake Zurich village, IL	19,631
Gunnison County, CO	15,324	Lakeville city, MN	55,954
Gurnee village, IL	31,295	Lakewood city, CO	142,980
Hailey city, ID	7,960	Lakewood city, WA	58,163
Haines Borough, AK	2,508	Lane County, OR	351,715
Hallandale Beach city, FL	37,113	Larimer County, CO	299,630
Hamilton city, OH	62,477	Las Cruces city, NM	97,618
Hanover County, VA	99,863	Las Vegas city, NV	583,756
Harrisonburg city, VA	48,914	Lawrence city, KS	87,643
Harrisonville city, MO	10,019	League City city, TX	83,560
Hayward city, CA	144,186	Lee's Summit city, MO	91,364
Henderson city, NV	257,729	Lehi city, UT	47,407
Herndon town, VA	23,292	Lenexa city, KS	48,190
High Point city, NC	104,371	Lewis County, NY	27,087
Highland Park city, IL	29,763	Lewisville city, TX	95,290
Highlands Ranch CDP, CO	96,713	Libertyville village, IL	20,315
Hillsborough town, NC	6,087	Lincoln city, NE	258,379
Holland city, MI	33,051	Lindsborg city, KS	3,458
Honolulu County, HI	953,207	Littleton city, CO	41,737
Hooksett town, NH	13,451	Livermore city, CA	80,968
Hopkins city, MN	17,591	Lombard village, IL	43,165
Hopkinton town, MA	14,925	Lone Tree city, CO	10,218
Hoquiam city, WA	8,726	Long Grove village, IL	8,043
Horry County, SC	269,291	Longmont city, CO	86,270
Hudson city, OH	22,262	Longview city, TX	80,455
Hudson town, CO	2,356	Los Alamos County, NM	17,950
Hudsonville city, MI	7,116	Louisville city, CO	18,376
Huntersville town, NC	46,773	Lynchburg city, VA	75,568
Hurst city, TX	37,337	Lynnwood city, WA	35,836
Hutchinson city, MN	14,178	Macomb County, MI	840,978
Hutto city, TX	14,698	Madison city, WI	233,209
Hyattsville city, MD	17,557	Manhattan Beach city, CA	35,135
Independence city, MO	116,830	Mankato city, MN	39,309
Indian Trail town, NC	33,518	Maple Grove city, MN	61,567
Indianola city, IA	14,782	Maple Valley city, WA	22,684
Iowa City city, IA	67,862	MariCopa County, AZ	3,817,117
Issaquah city, WA	30,434	Martinez city, CA	35,824
Jackson County, MI	160,248	Maryland Heights city, MO	27,472
James City County, VA	67,009	Matthews town, NC	27,198
Jefferson City city, MO	43,079	McAllen city, TX	129,877
Jefferson County, CO	534,543	McDonough city, GA	22,084
Jefferson County, NY	116,229	McKinney city, TX	131,117
Jerome city, ID	10,890	McMinnville city, OR	32,187
Johnson City city, TN	63,152	Medford city, OR	74,907
Johnston city, IA	17,278	Menlo Park city, CA	32,026
Jupiter town, FL	55,156	Mercer Island city, WA	22,699
Kalamazoo city, MI	74,262	Meridian charter township, MI	39,688
Kansas City city, KS	145,786	Meridian city, ID	75,092
Kansas City city, MO	459,787	Merriam city, KS	11,003
Keizer city, OR	36,478	Mesa County, CO	146,723
Kenmore city, WA	20,460	Miami Beach city, FL	87,779
Kennedale city, TX	6,763	Miami city, FL	399,457
Kennett Square borough, PA	6,072	Middleton city, WI	17,442
Kettering city, OH	56,163	Midland city, MI	41,863
Key West city, FL	24,649	Milford city, DE	9,559
King County, WA	1,931,249	Milton city, GA	32,661
Kirkland city, WA	48,787	Minneapolis city, MN	382,578
Kirkwood city, MO	27,540	Mission Viejo city, CA	93,305
Knoxville city, IA	7,313	Modesto city, CA	201,165
La Mesa city, CA	57,065	Monterey city, CA	27,810
La Plata town, MD	8,753	Montgomery County, VA	94,392
La Porte city, TX	33,800	Monticello city, UT	1,972
La Vista city, NE	15,758	Monument town, CO	5,530

The National Citizen Survey™

Mooresville town, NC.....	32,711	Port Huron city, MI.....	30,184
Morristown city, TN.....	29,137	Port Orange city, FL.....	56,048
Morrisville town, NC.....	18,576	Portland city, OR.....	583,776
Moscow city, ID.....	23,800	Post Falls city, ID.....	27,574
Mountain Village town, CO.....	1,320	Prince William County, VA.....	402,002
Mountlake Terrace city, WA.....	19,909	Prior Lake city, MN.....	22,796
Muscataine city, IA.....	22,886	Provo city, UT.....	112,488
Naperville city, IL.....	141,853	Pueblo city, CO.....	106,595
Needham CDP, MA.....	28,886	Purcellville town, VA.....	7,727
New Braunfels city, TX.....	57,740	Queen Creek town, AZ.....	26,361
New Brighton city, MN.....	21,456	Radnor township, PA.....	31,531
New Hanover County, NC.....	202,667	Ramsey city, MN.....	23,668
New Orleans city, LA.....	343,829	Rapid City city, SD.....	67,956
New Smyrna Beach city, FL.....	22,464	Raymore city, MO.....	19,206
Newberg city, OR.....	22,068	Redmond city, WA.....	54,144
Newport Beach city, CA.....	85,186	Rehoboth Beach city, DE.....	1,327
Newport News city, VA.....	180,719	Reno city, NV.....	225,221
Newton city, IA.....	15,254	Reston CDP, VA.....	58,404
Noblesville city, IN.....	51,969	Richmond city, CA.....	103,701
Nogales city, AZ.....	20,837	Richmond Heights city, MO.....	8,603
Norfolk city, VA.....	242,803	Rifle city, CO.....	9,172
North Richland Hills city, TX.....	63,343	Rio Rancho city, NM.....	87,521
Northglenn city, CO.....	35,789	River Falls city, WI.....	15,000
Novato city, CA.....	51,904	Riverdale city, UT.....	8,426
Novi city, MI.....	55,224	Riverside city, CA.....	303,871
O'Fallon city, IL.....	28,281	Riverside city, MO.....	2,937
O'Fallon city, MO.....	79,329	Rochester Hills city, MI.....	70,995
Oak Park village, IL.....	51,878	Rock Hill city, SC.....	66,154
Oakland city, CA.....	390,724	Rockford city, IL.....	152,871
Oakland Park city, FL.....	41,363	Rockville city, MD.....	61,209
Oakley city, CA.....	35,432	Rogers city, MN.....	8,597
Ogdensburg city, NY.....	11,128	Rolla city, MO.....	19,559
Oklahoma City city, OK.....	579,999	Roselle village, IL.....	22,763
Olathe city, KS.....	125,872	Rosemount city, MN.....	21,874
Old Town city, ME.....	7,840	Roseville city, MN.....	33,660
Olmsted County, MN.....	144,248	Roswell city, GA.....	88,346
Olympia city, WA.....	46,478	Round Rock city, TX.....	99,887
Orland Park village, IL.....	56,767	Royal Oak city, MI.....	57,236
Oshkosh city, WI.....	66,083	Saco city, ME.....	18,482
Oshkosh charter township, MI.....	21,705	Sahuarita town, AZ.....	25,259
Otsego County, MI.....	24,164	Sammamish city, WA.....	45,780
Overland Park city, KS.....	173,372	San Anselmo town, CA.....	12,336
Oviedo city, FL.....	33,342	San Antonio city, TX.....	1,327,407
Paducah city, KY.....	25,024	San Carlos city, CA.....	28,406
Palm Coast city, FL.....	75,180	San Diego city, CA.....	1,307,402
Palo Alto city, CA.....	64,403	San Francisco city, CA.....	805,235
Papillion city, NE.....	18,894	San Jose city, CA.....	945,942
Park City city, UT.....	7,558	San Juan County, NM.....	130,044
Parker town, CO.....	45,297	San Marcos city, CA.....	83,781
Parkland city, FL.....	23,962	San Marcos city, TX.....	44,894
Pasadena city, CA.....	137,122	San Rafael city, CA.....	57,713
Pasco city, WA.....	59,781	Sandy Springs city, GA.....	93,853
Pasco County, FL.....	464,697	Sanford city, FL.....	53,570
Pearland city, TX.....	91,252	Sangamon County, IL.....	197,465
Peoria city, AZ.....	154,065	Santa Clarita city, CA.....	176,320
Peoria city, IL.....	115,007	Santa Fe County, NM.....	144,170
Peoria County, IL.....	186,494	Santa Monica city, CA.....	89,736
Petoskey city, MI.....	5,670	Sarasota County, FL.....	379,448
Pflugerville city, TX.....	46,936	Savage city, MN.....	26,911
Phoenix city, AZ.....	1,445,632	Scarborough CDP, ME.....	4,403
Pinal County, AZ.....	375,770	Schaumburg village, IL.....	74,227
Pinehurst village, NC.....	13,124	Scott County, MN.....	129,928
Piqua city, OH.....	20,522	Scottsdale city, AZ.....	217,385
Pitkin County, CO.....	17,148	Seaside city, CA.....	33,025
Plano city, TX.....	259,841	SeaTac city, WA.....	26,909
Platte City city, MO.....	4,691	Sevierville city, TN.....	14,807
Plymouth city, MN.....	70,576	Shawnee city, KS.....	62,209
Pocatello city, ID.....	54,255	Sheboygan city, WI.....	49,288
Polk County, IA.....	430,640	Shoreview city, MN.....	25,043
Pompano Beach city, FL.....	99,845	Shorewood city, MN.....	7,307

The National Citizen Survey™

Shorewood village, IL.....	15,615	Twin Falls city, ID.....	44,125
Shorewood village, WI.....	13,162	Tyler city, TX.....	96,900
Sioux Center city, IA.....	7,048	Umatilla city, OR.....	6,906
Sioux Falls city, SD.....	153,888	Upper Arlington city, OH.....	33,771
Skokie village, IL.....	64,784	Urbandale city, IA.....	39,463
Snellville city, GA.....	18,242	Vail town, CO.....	5,305
Snowmass Village town, CO.....	2,826	Vancouver city, WA.....	161,791
South Kingstown town, RI.....	30,639	Vestavia Hills city, AL.....	34,033
South Lake Tahoe city, CA.....	21,403	Victoria city, MN.....	7,345
South Portland city, ME.....	25,002	Virginia Beach city, VA.....	437,994
Southborough town, MA.....	9,767	Wake Forest town, NC.....	30,117
Southlake city, TX.....	26,575	Walnut Creek city, CA.....	64,173
Sparks city, NV.....	90,264	Washington County, MN.....	238,136
Spokane Valley city, WA.....	89,755	Washington town, NH.....	1,123
Spring Hill city, KS.....	5,437	Washoe County, NV.....	421,407
Springboro city, OH.....	17,409	Watauga city, TX.....	23,497
Springfield city, MO.....	159,498	Wauwatosa city, WI.....	46,396
Springfield city, OR.....	59,403	Waverly city, IA.....	9,874
Springville city, UT.....	29,466	Weddington town, NC.....	9,459
St. Charles city, IL.....	32,974	Wentzville city, MO.....	29,070
St. Cloud city, FL.....	35,183	West Carrollton city, OH.....	13,143
St. Cloud city, MN.....	65,842	West Chester borough, PA.....	18,461
St. Joseph city, MO.....	76,780	West Des Moines city, IA.....	56,609
St. Louis County, MN.....	200,226	West Richland city, WA.....	11,811
St. Louis Park city, MN.....	45,250	Western Springs village, IL.....	12,975
Stallings town, NC.....	13,831	Westerville city, OH.....	36,120
State College borough, PA.....	42,034	Westlake town, TX.....	992
Steamboat Springs city, CO.....	12,088	Westminster city, CO.....	106,114
Sterling Heights city, MI.....	129,699	Weston town, MA.....	11,261
Sugar Grove village, IL.....	8,997	Wheat Ridge city, CO.....	30,166
Sugar Land city, TX.....	78,817	White House city, TN.....	10,255
Summit city, NJ.....	21,457	Wichita city, KS.....	382,368
Summit County, UT.....	36,324	Williamsburg city, VA.....	14,068
Sunnyvale city, CA.....	140,081	Wilmington city, NC.....	106,476
Surprise city, AZ.....	117,517	Wilsonville city, OR.....	19,509
Suwanee city, GA.....	15,355	Winchester city, VA.....	26,203
Tacoma city, WA.....	198,397	Windsor town, CO.....	18,644
Takoma Park city, MD.....	16,715	Windsor town, CT.....	29,044
Tamarac city, FL.....	60,427	Winnetka village, IL.....	12,187
Temecula city, CA.....	100,097	Winston-Salem city, NC.....	229,617
Tempe city, AZ.....	161,719	Winter Garden city, FL.....	34,568
Temple city, TX.....	66,102	Woodbury city, MN.....	61,961
The Woodlands CDP, TX.....	93,847	Woodland city, CA.....	55,468
Thornton city, CO.....	118,772	Woodland city, WA.....	5,509
Thousand Oaks city, CA.....	126,683	Wrentham town, MA.....	10,955
Tigard city, OR.....	48,035	Yakima city, WA.....	91,067
Tracy city, CA.....	82,922	York County, VA.....	65,464
Tualatin city, OR.....	26,054	Yorktown town, IN.....	9,405
Tulsa city, OK.....	391,906		

Jurisdictions near Washington, D.C. Benchmark Comparisons

Table 83: Community Characteristics General

	Percent positive	Rank	Number of communities in comparison	Comparison to benchmark
The overall quality of life in Alexandria	83%	11	22	Similar
Overall image or reputation of Alexandria	87%	5	17	Higher
Alexandria as a place to live	91%	6	18	Similar
Your neighborhood as a place to live	83%	4	16	Similar
Alexandria as a place to raise children	73%	16	20	Similar
Alexandria as a place to retire	52%	16	19	Similar
Overall appearance of Alexandria	88%	3	21	Similar

The National Citizen Survey™

Table 84: Community Characteristics by Facet

		Percent positive	Rank	Number of communities in comparison	Comparison to benchmark
Safety	Overall feeling of safety in Alexandria	80%	6	13	Similar
	In your neighborhood during the day	93%	12	21	Similar
	In Alexandria's downtown area (i.e. Old Town) during the day	96%	3	18	Similar
Mobility	Overall ease of getting to the places you usually have to visit	73%	7	13	Similar
	Availability of paths and walking trails	78%	2	16	Higher
	Ease of walking in Alexandria	83%	4	18	Higher
	Ease of travel by bicycle in Alexandria	72%	3	18	Higher
	Ease of travel by public transportation in Alexandria	68%	1	10	Higher
	Ease of travel by car in Alexandria	51%	13	19	Similar
	Ease of public parking	27%	9	11	Lower
	Traffic flow on major streets	43%	9	17	Similar
	Natural Environment	Quality of overall natural environment in Alexandria	79%	11	18
Cleanliness of Alexandria		83%	4	15	Similar
Air quality		76%	9	16	Similar
Built Environment	Overall "built environment" of Alexandria (including overall design, buildings, parks and transportation systems)	75%	3	12	Similar
	Overall quality of new development in Alexandria	64%	4	18	Similar
	Availability of affordable quality housing	21%	17	18	Lower
	Variety of housing options	50%	12	17	Similar
	Public places where people want to spend time	82%	2	11	Higher
Economy	Overall economic health of Alexandria	74%	3	12	Similar
	Vibrant downtown/commercial area	86%	1	10	Much higher
	Overall quality of business and service establishments in Alexandria	78%	3	17	Similar
	Cost of living in Alexandria	18%	11	11	Lower
	Shopping opportunities	79%	3	16	Higher
	Employment opportunities	53%	2	17	Similar
	Alexandria as a place to visit	90%	2	12	Higher
	Alexandria as a place to work	81%	2	18	Higher
	Recreation and Wellness	Health and wellness opportunities in Alexandria	76%	6	13
Availability of affordable quality mental health care		50%	4	11	Similar
Availability of preventive health services		63%	7	15	Similar
Availability of affordable quality health care		62%	8	16	Similar
Availability of affordable quality food		67%	8	15	Similar
Recreational opportunities		79%	3	17	Similar
Education and Enrichment	Fitness opportunities (including exercise classes and paths or trails, etc.)	74%	2	12	Similar
	Overall opportunities for education and enrichment	69%	10	13	Similar
	Opportunities to attend cultural/arts/music activities	74%	7	20	Similar
	Adult educational opportunities	68%	6	11	Similar
	K-12 education	52%	14	18	Lower
Community Engagement	Availability of affordable quality child care/preschool	42%	12	15	Similar
	Opportunities to participate in social events and activities	75%	2	15	Similar
	Neighborliness of Alexandria	59%	7	12	Similar
	Openness and acceptance of the community toward people of diverse backgrounds	71%	4	17	Similar
	Opportunities to participate in community matters	69%	6	17	Similar
	Opportunities to volunteer	80%	5	16	Similar

The National Citizen Survey™

Table 85: Governance General

	Percent positive	Rank	Number of communities in comparison	Comparison to benchmark
Services provided by the City of Alexandria	78%	10	26	Similar
Overall customer service by Alexandria employees	69%	15	18	Similar
Value of services for the taxes paid to Alexandria	52%	12	21	Similar
Overall direction that Alexandria is taking	59%	7	17	Similar
Job Alexandria government does at welcoming resident involvement	52%	10	18	Similar
Overall confidence in Alexandria government	54%	5	12	Similar
Generally acting in the best interest of the community	58%	5	12	Similar
Being honest	58%	5	12	Similar
Treating all residents fairly	53%	6	12	Similar
Services provided by the Federal Government	57%	1	14	Similar

Table 86: Governance by Facet

		Percent positive	Rank	Number of communities in comparison	Comparison to benchmark
Safety	Police services	90%	4	21	Similar
	Fire services	96%	3	15	Similar
	Ambulance or emergency medical services	95%	3	16	Similar
	Crime prevention	71%	8	18	Similar
	Fire prevention and education	79%	5	13	Similar
	Animal control	84%	1	14	Higher
	Emergency preparedness (services that prepare the community for natural disasters or other emergency situations)	65%	5	18	Similar
Mobility	Traffic enforcement	62%	9	19	Similar
	Street repair	42%	10	16	Similar
	Street cleaning	63%	8	14	Similar
	Street lighting	60%	7	16	Similar
	Snow removal	55%	11	16	Similar
	Sidewalk maintenance	52%	9	13	Similar
	Traffic signal timing	51%	3	10	Similar
Natural Environment	Bus or transit services	74%	2	12	Higher
	Garbage collection	84%	8	17	Similar
	Recycling	81%	8	19	Similar
	Yard waste pick-up	84%	5	15	Similar
	Drinking water	77%	4	14	Similar
	Preservation of natural areas such as open space and greenbelts	65%	2	15	Similar
	Alexandria open space	64%	4	9	Similar
Built Environment	Storm drainage	69%	6	17	Similar
	Sewer services	78%	6	13	Similar
	Land use, planning and zoning	60%	5	17	Similar
	Code enforcement (weeds, abandoned buildings, etc.)	65%	1	18	Higher
Economy	Cable television	32%	11	11	Lower
	Economic development	65%	3	17	Similar
Recreation and Wellness	City parks	90%	3	20	Higher
	Recreation programs or classes	84%	3	14	Similar
	Recreation centers or facilities	83%	4	16	Similar
	Health services	76%	5	14	Similar
Education and Enrichment	City-sponsored special events	75%	3	12	Similar
	Public library services	88%	4	16	Similar

The National Citizen Survey™

		Percent positive	Rank	Number of communities in comparison	Comparison to benchmark
Community Engagement	Public information services	78%	3	15	Similar

Table 87: Participation General

	Percent positive	Rank	Number of communities in comparison	Comparison to benchmark
Sense of community	59%	13	18	Similar
Recommend living in Alexandria to someone who asks	93%	4	16	Similar
Remain in Alexandria for the next five years	80%	6	16	Similar
Contacted Alexandria (in-person, phone, email or web) for help or information	49%	7	16	Similar

Table 88: Participation by Facet

		Percent positive	Rank	Number of communities in comparison	Comparison to benchmark
Safety	Did NOT report a crime to the police	86%	3	11	Similar
	Household member was NOT a victim of a crime	91%	7	14	Similar
Mobility	Used bus, rail, subway or other public transportation instead of driving	83%	1	8	Much higher
	Carpooled with other adults or children instead of driving alone	38%	9	11	Similar
	Walked or biked instead of driving	71%	3	11	Higher
Natural Environment	Made efforts to conserve water	76%	9	11	Similar
	Made efforts to make your home more energy efficient	64%	11	11	Lower
	Recycle at home	88%	4	16	Similar
Built Environment	Did NOT observe a code violation or other hazard in Alexandria	74%	1	11	Higher
	NOT experiencing housing costs stress	56%	13	17	Similar
Economy	Purchase goods or services from a business located in Alexandria	94%	12	12	Similar
	Economy will have positive impact on income	33%	3	16	Similar
	Work inside boundaries of Alexandria	33%	10	12	Lower
Recreation and Wellness	Used Alexandria recreation centers or their services	50%	10	13	Similar
	Visited a neighborhood park or City park	85%	7	17	Similar
	Eat at least 5 portions of fruits and vegetables a day	83%	8	12	Similar
	Participate in moderate or vigorous physical activity	88%	1	12	Similar
	In very good to excellent health	73%	3	12	Similar
Education and Enrichment	Used Alexandria public libraries or their services	64%	6	14	Similar
	Attended City-sponsored event	56%	6	12	Similar
Community Engagement	Contacted Alexandria elected officials (in-person, phone, email or web) to express your opinion	18%	3	10	Similar
	Volunteered your time to some group/activity in Alexandria	30%	14	15	Lower
	Participated in a club	21%	15	15	Lower
	Talked to or visited with your immediate neighbors	77%	11	11	Lower
	Done a favor for a neighbor	70%	11	11	Similar
	Attended a local public meeting	15%	16	16	Similar

The National Citizen Survey™

	Percent positive	Rank	Number of communities in comparison	Comparison to benchmark
Watched (online or on television) a local public meeting	22%	12	13	Similar
Read or watch local news (via television, paper, computer, etc.)	85%	8	12	Similar
Vote in local elections	78%	8	15	Similar

Communities included in Jurisdictions near Washington, D.C. comparisons

The communities included in Alexandria’s custom comparisons are listed below along with their population according to the 2010 Census.

Albemarle County, VA.....	98,970	James City County, VA	67,009
Alexandria city, VA	139,966	La Plata town, MD.....	8,753
Annapolis city, MD	38,394	Lynchburg city, VA.....	75,568
Ashland town, VA.....	7,225	Montgomery County, VA.....	94,392
Baltimore city, MD.....	620,961	Newport News city, VA.....	180,719
Charlottesville city, VA.....	43,475	Norfolk city, VA.....	242,803
Chesterfield County, VA.....	316,236	Prince William County, VA.....	402,002
College Park city, MD	30,413	Purcellville town, VA.....	7,727
Dorchester County, MD	32,618	Reston CDP, VA	58,404
Fredericksburg city, VA.....	24,286	Rockville city, MD.....	61,209
Gaithersburg city, MD.....	59,933	Takoma Park city, MD	16,715
Hanover County, VA.....	99,863	Virginia Beach city, VA.....	437,994
Harrisonburg city, VA	48,914	Williamsburg city, VA.....	14,068
Herndon town, VA.....	23,292	York County, VA.....	65,464
Hyattsville city, MD	17,557		

Populations between 80,000 and 180,000 near Metropolitan Areas Benchmark Comparisons

Table 89: Community Characteristics General

	Percent positive	Rank	Number of communities in comparison	Comparison to benchmark
The overall quality of life in Alexandria	83%	17	44	Similar
Overall image or reputation of Alexandria	87%	6	27	Higher
Alexandria as a place to live	91%	10	34	Similar
Your neighborhood as a place to live	83%	10	25	Similar
Alexandria as a place to raise children	73%	24	32	Similar
Alexandria as a place to retire	52%	25	29	Similar
Overall appearance of Alexandria	88%	2	28	Higher

Table 90: Community Characteristics by Facet

	Percent positive	Rank	Number of communities in comparison	Comparison to benchmark	
Safety	Overall feeling of safety in Alexandria	80%	17	25	Similar
	In your neighborhood during the day	93%	13	29	Similar
	In Alexandria's downtown area (i.e. Old Town) during the day	96%	2	22	Higher
Mobility	Overall ease of getting to the places you usually have to visit	73%	4	16	Similar
	Availability of paths and walking trails	78%	3	26	Higher
	Ease of walking in Alexandria	83%	3	24	Higher
	Ease of travel by bicycle in Alexandria	72%	2	24	Higher
	Ease of travel by public transportation in Alexandria	68%	1	15	Higher
	Ease of travel by car in Alexandria	51%	15	24	Similar

The National Citizen Survey™

		Percent positive	Rank	Number of communities in comparison	Comparison to benchmark	
	Ease of public parking	27%	13	13	Lower	
	Traffic flow on major streets	43%	17	30	Similar	
Natural Environment	Quality of overall natural environment in Alexandria	79%	8	22	Similar	
	Cleanliness of Alexandria	83%	7	20	Similar	
	Air quality	76%	7	19	Similar	
	Overall "built environment" of Alexandria (including overall design, buildings, parks and transportation systems)	75%	7	16	Similar	
Built Environment	Overall quality of new development in Alexandria	64%	11	22	Similar	
	Availability of affordable quality housing	21%	19	20	Much lower	
	Variety of housing options	50%	17	20	Similar	
	Public places where people want to spend time	82%	2	15	Higher	
	Overall economic health of Alexandria	74%	8	16	Similar	
Economy	Vibrant downtown/commercial area	86%	2	14	Much higher	
	Overall quality of business and service establishments in Alexandria	78%	3	21	Similar	
	Cost of living in Alexandria	18%	15	16	Lower	
	Shopping opportunities	79%	2	23	Higher	
	Employment opportunities	53%	7	24	Similar	
	Alexandria as a place to visit	90%	1	16	Much higher	
	Alexandria as a place to work	81%	6	29	Higher	
	Recreation and Wellness	Health and wellness opportunities in Alexandria	76%	8	16	Similar
		Availability of affordable quality mental health care	50%	4	13	Similar
		Availability of preventive health services	63%	9	16	Similar
		Availability of affordable quality health care	62%	10	16	Similar
		Availability of affordable quality food	67%	10	17	Similar
Recreational opportunities		79%	5	22	Similar	
Education and Enrichment	Fitness opportunities (including exercise classes and paths or trails, etc.)	74%	5	15	Similar	
	Overall opportunities for education and enrichment	69%	8	16	Similar	
	Opportunities to attend cultural/arts/music activities	74%	6	24	Higher	
	Adult educational opportunities	68%	6	15	Similar	
	K-12 education	52%	21	24	Lower	
Community Engagement	Availability of affordable quality child care/preschool	42%	17	18	Similar	
	Opportunities to participate in social events and activities	75%	4	19	Higher	
	Neighborhoodliness of Alexandria	59%	6	15	Similar	
	Openness and acceptance of the community toward people of diverse backgrounds	71%	5	21	Similar	
	Opportunities to participate in community matters	69%	3	19	Similar	
	Opportunities to volunteer	80%	3	21	Similar	

Table 91: Governance General

	Percent positive	Rank	Number of communities in comparison	Comparison to benchmark
Services provided by the City of Alexandria	78%	27	41	Similar
Overall customer service by Alexandria employees	69%	23	34	Similar
Value of services for the taxes paid to Alexandria	52%	22	33	Similar
Overall direction that Alexandria is taking	59%	21	28	Similar
Job Alexandria government does at welcoming resident involvement	52%	17	25	Similar
Overall confidence in Alexandria government	54%	9	15	Similar
Generally acting in the best interest of the community	58%	10	16	Similar

The National Citizen Survey™

	Percent positive	Rank	Number of communities in comparison	Comparison to benchmark
Being honest	58%	9	15	Similar
Treating all residents fairly	53%	9	15	Similar
Services provided by the Federal Government	57%	1	19	Higher

Table 92: Governance by Facet

		Percent positive	Rank	Number of communities in comparison	Comparison to benchmark
Safety	Police services	90%	5	35	Similar
	Fire services	96%	4	25	Similar
	Ambulance or emergency medical services	95%	3	26	Similar
	Crime prevention	71%	16	29	Similar
	Fire prevention and education	79%	9	22	Similar
	Animal control	84%	1	30	Higher
	Emergency preparedness (services that prepare the community for natural disasters or other emergency situations)	65%	8	19	Similar
Mobility	Traffic enforcement	62%	14	30	Similar
	Street repair	42%	28	37	Similar
	Street cleaning	63%	14	28	Similar
	Street lighting	60%	9	20	Similar
	Snow removal	55%	8	14	Similar
	Sidewalk maintenance	52%	16	28	Similar
	Traffic signal timing	51%	5	23	Similar
	Bus or transit services	74%	1	18	Higher
Natural Environment	Garbage collection	84%	20	33	Similar
	Recycling	81%	21	32	Similar
	Yard waste pick-up	84%	9	22	Similar
	Drinking water	77%	10	29	Similar
	Preservation of natural areas such as open space and greenbelts	65%	7	20	Similar
Built Environment	Alexandria open space	64%	5	14	Similar
	Storm drainage	69%	17	30	Similar
	Sewer services	78%	13	28	Similar
	Land use, planning and zoning	60%	6	24	Similar
	Code enforcement (weeds, abandoned buildings, etc.)	65%	5	33	Higher
	Cable television	32%	17	17	Lower
	Economy	Economic development	65%	7	23
City parks		90%	6	25	Similar
Recreation and Wellness	Recreation programs or classes	84%	11	30	Similar
	Recreation centers or facilities	83%	7	24	Similar
	Health services	76%	4	15	Similar
Education and Enrichment	City-sponsored special events	75%	5	17	Similar
	Public library services	88%	8	33	Similar
Community Engagement	Public information services	78%	5	24	Similar

The National Citizen Survey™

Table 93: Participation General

	Percent positive	Rank	Number of communities in comparison	Comparison to benchmark
Sense of community	59%	15	24	Similar
Recommend living in Alexandria to someone who asks	93%	7	21	Similar
Remain in Alexandria for the next five years	80%	16	19	Similar
Contacted Alexandria (in-person, phone, email or web) for help or information	49%	7	27	Similar

Table 94: Participation by Facet

		Percent positive	Rank	Number of communities in comparison	Comparison to benchmark
Safety	Did NOT report a crime to the police	86%	1	14	Similar
	Household member was NOT a victim of a crime	91%	6	20	Similar
Mobility	Used bus, rail, subway or other public transportation instead of driving	83%	1	13	Much higher
	Carpooled with other adults or children instead of driving alone	38%	11	15	Similar
	Walked or biked instead of driving	71%	3	15	Higher
Natural Environment	Made efforts to conserve water	76%	12	14	Lower
	Made efforts to make your home more energy efficient	64%	14	14	Lower
	Recycle at home	88%	12	19	Similar
Built Environment	Did NOT observe a code violation or other hazard in Alexandria	74%	1	14	Much higher
	NOT experiencing housing costs stress	56%	18	19	Lower
Economy	Purchase goods or services from a business located in Alexandria	94%	12	14	Similar
	Economy will have positive impact on income	33%	8	20	Similar
	Work inside boundaries of Alexandria	33%	8	14	Similar
Recreation and Wellness	Used Alexandria recreation centers or their services	50%	14	19	Similar
	Visited a neighborhood park or City park	85%	7	20	Similar
	Eat at least 5 portions of fruits and vegetables a day	83%	11	14	Similar
	Participate in moderate or vigorous physical activity	88%	4	14	Similar
	In very good to excellent health	73%	2	14	Similar
	Used Alexandria public libraries or their services	64%	8	19	Similar
Education and Enrichment	Attended City-sponsored event	56%	5	15	Similar
	Contacted Alexandria elected officials (in-person, phone, email or web) to express your opinion	18%	3	14	Similar
Community Engagement	Volunteered your time to some group/activity in Alexandria	30%	15	20	Similar
	Participated in a club	21%	12	17	Similar
	Talked to or visited with your immediate neighbors	77%	15	15	Lower
	Done a favor for a neighbor	70%	13	14	Similar
	Attended a local public meeting	15%	15	19	Similar
	Watched (online or on television) a local public meeting	22%	10	18	Similar
	Read or watch local news (via television, paper, computer, etc.)	85%	9	14	Similar
	Vote in local elections	78%	11	18	Similar

The National Citizen Survey™

Communities included in Populations between 80,000 and 180,000 and near Metropolitan areas comparisons

The communities included in Alexandria’s second subset of custom comparisons are listed below along with their population according to the 2010 Census.

Alexandria city, VA.....	139,966	McKinney city, TX.....	131,117
Ann Arbor city, MI.....	113,934	Miami Beach city, FL	87,779
Arvada city, CO.....	106,433	Mission Viejo city, CA	93,305
Bellevue city, WA	122,363	Naperville city, IL.....	141,853
Bloomington city, MN	82,893	Newport Beach city, CA	85,186
Broken Arrow city, OK	98,850	Olathe city, KS	125,872
Cambridge city, MA.....	105,162	Pasadena city, CA	137,122
Cape Coral city, FL.....	154,305	Pearland city, TX.....	91,252
Carlsbad city, CA.....	105,328	Peoria city, AZ	154,065
Cary town, NC	135,234	Peoria city, IL	115,007
Centennial city, CO.....	100,377	Pompano Beach city, FL	99,845
Citrus Heights city, CA.....	83,301	Provo city, UT.....	112,488
Clearwater city, FL	107,685	Richmond city, CA.....	103,701
Concord city, CA	122,067	Rio Rancho city, NM.....	87,521
Denton city, TX.....	113,383	Roswell city, GA	88,346
Edmond city, OK.....	81,405	Round Rock city, TX.....	99,887
Elk Grove city, CA	153,015	Sandy Springs city, GA	93,853
Hayward city, CA	144,186	Santa Clarita city, CA.....	176,320
High Point city, NC.....	104,371	Santa Monica city, CA.....	89,736
Highlands Ranch CDP, CO	96,713	Sterling Heights city, MI	129,699
Independence city, MO.....	116,830	Sunnyvale city, CA	140,081
Kansas City city, KS.....	145,786	Surprise city, AZ.....	117,517
Lakewood city, CO	142,980	Tempe city, AZ	161,719
League City city, TX	83,560	Thornton city, CO.....	118,772
Lee’s Summit city, MO.....	91,364	Thousand Oaks city, CA.....	126,683
Lewisville city, TX.....	95,290	Westminster city, CO.....	106,114
Livermore city, CA.....	80,968		

Appendix C: Detailed Survey Methods

The National Citizen Survey (The NCS™), conducted by National Research Center, Inc., was developed to provide communities an accurate, affordable and easy way to assess and interpret resident opinion about important local topics. Standardization of common questions and survey methods provide the rigor to assure valid results, and each community has enough flexibility to construct a customized version of The NCS.

Results offer insight into residents' perspectives about the community as a whole, including local amenities, services, public trust, resident participation and other aspects of the community in order to support budgeting, land use and strategic planning and communication with residents. Resident demographic characteristics permit comparison to the Census as well as comparison of results for different subgroups of residents. The City of Alexandria funded this research. Please contact Jonathan Mahlandt of the City of Alexandria's Office of Performance and Accountability at jonathan.mahlandt@alexandriava.gov if you have any questions about the survey.

Survey Validity

The question of survey validity has two parts: 1) how can a community be confident that the results from those who completed the questionnaire are representative of the results that would have been obtained had the survey been administered to the entire population? and 2) how closely do the perspectives recorded on the survey reflect what residents really believe or do?

To answer the first question, the best survey research practices were used for the resources spent to ensure that the results from the survey respondents reflect the opinions of residents in the entire community. These practices include:

- Using a mail-out/mail-back methodology, which typically gets a higher response rate than phone for the same dollars spent. A higher response rate lessens the worry that those who did not respond are different than those who did respond.
- Selecting households at random within the community to receive the survey to ensure that the households selected to receive the survey are representative of the larger community.
- Over-sampling multi-family housing units to improve response from hard-to-reach, lower income or younger apartment dwellers.
- Selecting the respondent within the household using an unbiased sampling procedure; in this case, the "birthday method." The cover letter included an instruction requesting that the respondent in the household be the adult (18 years old or older) who most recently had a birthday, irrespective of year of birth.
- Contacting potential respondents three times to encourage response from people who may have different opinions or habits than those who would respond with only a single prompt.
- Inviting response in a compelling manner (using appropriate letterhead/logos and a signature of a visible leader) to appeal to recipients' sense of civic responsibility.
- Providing a pre-addressed, postage-paid return envelope.
- Offering the survey in Spanish or other language when requested by a given community.
- Weighting the results to reflect the demographics of the population.

The answer to the second question about how closely the perspectives recorded on the survey reflect what residents really believe or do is more complex. Resident responses to surveys are influenced by a variety of factors. For questions about service quality, residents' expectations for service quality play a role as well as the "objective" quality of the service provided, the way the resident perceives the entire community (that is, the context in which the service is provided), the scale on which the resident is asked to record his or her opinion and, of course, the opinion, itself, that a resident holds about the service. Similarly a resident's report of certain behaviors is colored by what he or she believes is the socially desirable response (e.g., reporting tolerant behaviors toward "oppressed groups," likelihood of voting for a tax increase for services to poor people, use of alternative modes of travel to work besides the single occupancy vehicle), his or her memory of the actual behavior (if it is not a question speculating about future actions, like a vote), his or her confidence that he or she can be honest without suffering any negative consequences (thus the need for anonymity) as well as the actual behavior itself.

How closely survey results come to recording the way a person really feels or behaves often is measured by the coincidence of reported behavior with observed current behavior (e.g., driving habits), reported intentions to

behave with observed future behavior (e.g., voting choices) or reported opinions about current community quality with objective characteristics of the community (e.g., feelings of safety correlated with rates of crime). There is a body of scientific literature that has investigated the relationship between reported behaviors and actual behaviors. Well-conducted surveys, by and large, do capture true respondent behaviors or intentions to act with great accuracy. Predictions of voting outcomes tend to be quite accurate using survey research, as do reported behaviors that are not about highly sensitive issues (e.g., family abuse or other illegal or morally sanctioned activities). For self-reports about highly sensitive issues, statistical adjustments can be made to correct for the respondents' tendency to report what they think the "correct" response should be.

Research on the correlation of resident opinion about service quality and "objective" ratings of service quality vary, with some showing stronger relationships than others. NRC's own research has demonstrated that residents who report the lowest ratings of street repair live in communities with objectively worse street conditions than those who report high ratings of street repair (based on road quality, delay in street repair, number of road repair employees). Similarly, the lowest rated fire services appear to be "objectively" worse than the highest rated fire services (expenditures per capita, response time, "professional" status of firefighters, breadth of services and training provided). Resident opinion commonly reflects objective performance data but is an important measure on its own. NRC principals have written, "If you collect trash three times a day but residents think that your trash haul is lousy, you still have a problem."

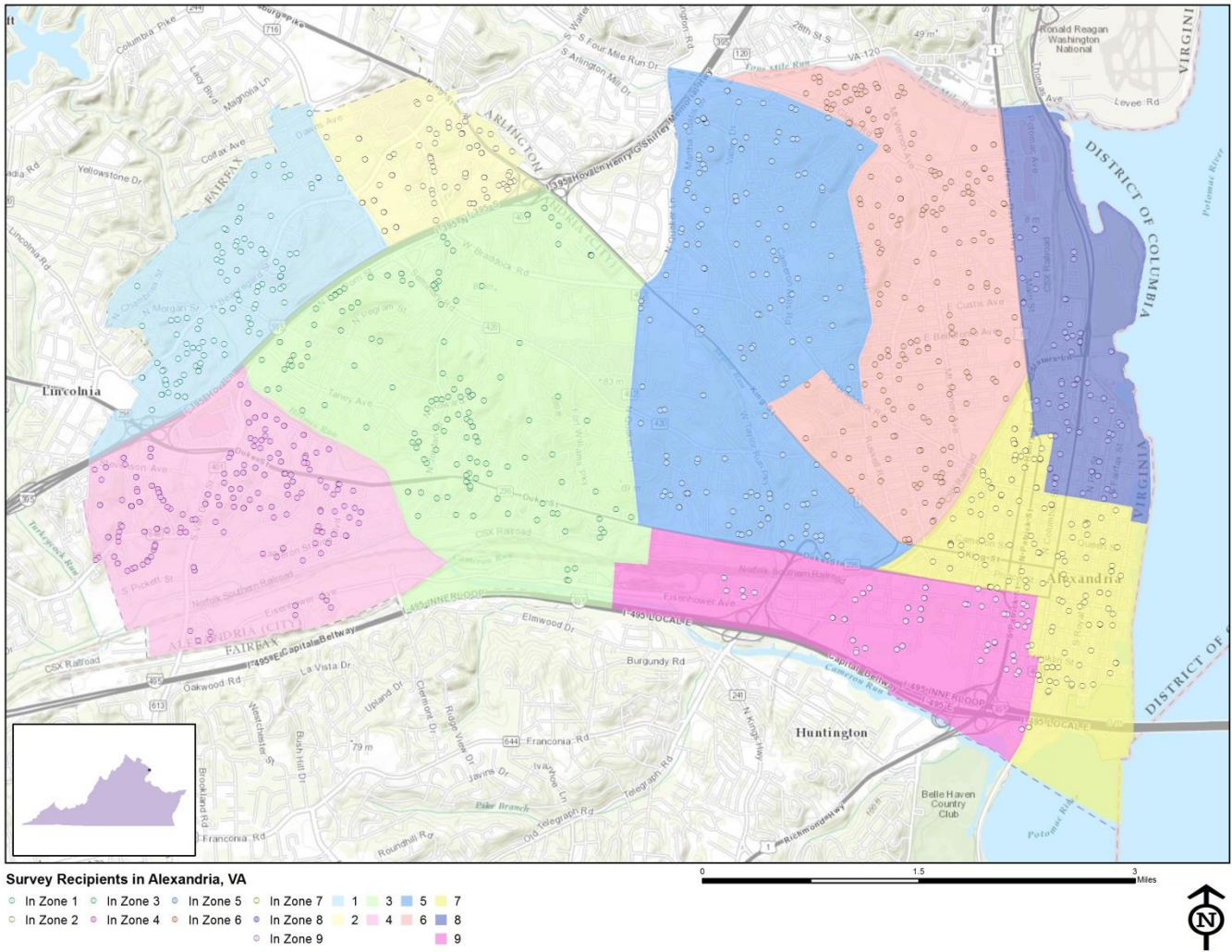
Survey Sampling

"Sampling" refers to the method by which households were chosen to receive the survey. All households within the City of Alexandria were eligible to participate in the survey. A list of all households within the zip codes serving Alexandria was purchased based on updated listings from the United States Postal Service. Since some of the zip codes that serve the City of Alexandria households may also serve addresses that lie outside of the community, the exact geographic location of each housing unit was compared to community boundaries using the most current municipal boundary file (updated on a quarterly basis) and addresses located outside of the City of Alexandria boundaries were removed from consideration. Each address identified as being within City boundaries was further identified as being within one of nine geographic areas (Areas 1-9).

To choose the 1,400 survey recipients, a systematic sampling method was applied to the list of households previously screened for geographic location. Systematic sampling is a procedure whereby a complete list of all possible households is culled, selecting every *Nth* one, giving each eligible household a known probability of selection, until the appropriate number of households is selected. Multi-family housing units were over sampled as residents of this type of housing typically respond at lower rates to surveys than do those in single-family housing units. Figure 1 displays a map of the households selected to receive the survey. In general, because of the random sampling techniques used, the displayed sampling density will closely mirror the overall housing unit density (which may be different from the population density). While the theory of probability assumes no bias in selection, there may be some minor variations in practice (meaning, an area with only 15% of the housing units might be sampled at an actual rate that is slightly above or below that).

An individual within each household was selected using the birthday method. The birthday method selects a person within the household by asking the "person whose birthday has most recently passed" to complete the questionnaire. The underlying assumption in this method is that day of birth has no relationship to the way people respond to surveys. This instruction was contained in the cover letter accompanying the questionnaire.

Figure 1: Location of Survey Recipients



Survey Administration and Response

Selected households received four mailings, one week apart, beginning on December 21, 2015. The first mailing was a prenotification postcard announcing the upcoming survey. The next mailing contained a letter from the City Manager inviting the household to participate, a questionnaire and a postage-paid return envelope. The second mailing contained a reminder letter, another survey and a postage-paid return envelope. The final mailing was a reminder postcard reminding residents to complete their questionnaire. The second cover letter asked those who had not completed the survey to do so and those who had already done so to refrain from turning in another survey. Both cover letters contained paragraphs in Spanish instructing participants to contact the City if they needed a questionnaire in Spanish; respondents could opt to take the survey online as well in their language of preference. Completed surveys were collected over the following seven weeks.

About 3% of the 1,400 surveys mailed were returned because the housing unit was vacant or the postal service was unable to deliver the survey as addressed. Of the remaining 1,354 households that received the survey, 357 completed the survey, providing an overall response rate of 26%. Of the 357 completed surveys, one was completed in Spanish and 57 were completed online. Additionally, responses were tracked by nine areas; response rates by area ranged from 16% to 43%.

The National Citizen Survey™

Table 95: Survey Response Rates by Area

	Number mailed	Undeliverable	Eligible	Returned	Response rate
Area 1	127	6	121	19	16%
Area 2	146	7	139	30	22%
Area 3	158	5	153	44	29%
Area 4	278	6	272	54	20%
Area 5	151	6	145	62	43%
Area 6	213	4	209	57	27%
Area 7	148	8	140	37	26%
Area 8	85	1	84	23	27%
Area 9	94	3	91	28	31%
Unknown Area	NA	NA	NA	3	NA
Overall	1,400	46	1354	357	26%

Confidence Intervals

It is customary to describe the precision of estimates made from surveys by a “level of confidence” and accompanying “confidence interval” (or margin of error). A traditional level of confidence, and the one used here, is 95%. The 95% confidence interval can be any size and quantifies the sampling error or imprecision of the survey results because some residents’ opinions are relied on to estimate all residents’ opinions.¹

The margin of error for the City of Alexandria survey is no greater than plus or minus five percentage points around any given percent reported for the entire sample (357 completed surveys).

For subgroups of responses, the margin of error increases because the sample size for the subgroup is smaller. For subgroups of approximately 100 respondents, the margin of error is plus or minus 10 percentage points.

Survey Processing (Data Entry)

Upon receipt, completed surveys were assigned a unique identification number. Additionally, each survey was reviewed and “cleaned” as necessary. For example, a question may have asked a respondent to pick two items out of a list of five, but the respondent checked three; in this case, NRC would use protocols to randomly choose two of the three selected items for inclusion in the dataset.

All surveys then were entered twice into an electronic dataset; any discrepancies were resolved in comparison to the original survey form. Range checks as well as other forms of quality control were also performed.

Survey Data Weighting

The demographic characteristics of the survey sample were compared to those found in the 2010 Census and American Community Survey estimates for adults in the City of Alexandria. The primary objective of weighting survey data is to make the survey sample reflective of the larger population of the community. The characteristics used for weighting were housing tenure (rent or own), race, ethnicity, sex and age. The results of the weighting scheme are presented in the following table.

¹ A 95% confidence interval indicates that for every 100 random samples of this many residents, 95 of the confidence intervals created will include the “true” population response. This theory is applied in practice to mean that the “true” perspective of the target population lies within the confidence interval created for a single survey. For example, if 75% of residents rate a service as “excellent” or “good,” then the 4% margin of error (for the 95% confidence interval) indicates that the range of likely responses for the entire community is between 71% and 79%. This source of uncertainty is called sampling error. In addition to sampling error, other sources of error may affect any survey, including the non-response of residents with opinions different from survey responders. Though standardized on The NCS, on other surveys, differences in question wording, order, translation and data entry, as examples, can lead to somewhat varying results.

The National Citizen Survey™

Table 96: Alexandria, VA 2016 Weighting Table

Characteristic	Population Norm	Unweighted Data	Weighted Data
Housing			
Rent home	57%	37%	54%
Own home	43%	63%	46%
Detached unit	17%	21%	16%
Attached unit	83%	79%	84%
Race and Ethnicity			
White	63%	76%	63%
Not white	37%	24%	37%
Not Hispanic	85%	94%	86%
Hispanic	15%	6%	14%
Sex and Age			
Female	53%	61%	53%
Male	47%	39%	47%
18-34 years of age	38%	18%	36%
35-54 years of age	38%	42%	39%
55+ years of age	24%	40%	25%
Females 18-34	20%	13%	20%
Females 35-54	19%	23%	19%
Females 55+	14%	25%	14%
Males 18-34	18%	5%	16%
Males 35-54	19%	19%	20%
Males 55+	11%	15%	11%
Area			
Area 1	9%	5%	9%
Area 2	10%	8%	10%
Area 3	11%	12%	11%
Area 4	20%	15%	15%
Area 5	11%	18%	13%
Area 6	15%	16%	19%
Area 7	11%	10%	9%
Area 8	6%	6%	6%
Area 9	7%	8%	8%

Survey Data Analysis and Reporting

The survey dataset was analyzed using the Statistical Package for the Social Sciences (SPSS). For the most part, the percentages presented in the reports represent the “percent positive.” The percent positive is the combination of the top two most positive response options (i.e., “excellent” and “good,” “very safe” and “somewhat safe,” “essential” and “very important,” etc.), or, in the case of resident behaviors/participation, the percent positive represents the proportion of respondents indicating “yes” or participating in an activity at least once a month.

On many of the questions in the survey respondents may answer “don’t know.” The proportion of respondents giving this reply is shown in the full set of responses included in Appendix A. However, these responses have been removed from the analyses presented in the reports. In other words, the tables and graphs display the responses from respondents who had an opinion about a specific item.

Appendix D: Survey Materials

Dear Alexandria Resident,

Estimado Residente de Alexandria,

It won't take much of your time to make a big difference!

iNo le tomará mucho de su tiempo para marcar una gran diferencia!

Your household has been randomly selected to participate in a survey about your community. Your survey will arrive in a few days.

Su hogar ha sido elegido al azar para participar en una encuesta sobre su comunidad. Su encuesta le llegará dentro de pocos días.

Thank you for helping create a better City!

iGracias por ayudar a crear una Alexandria mejor!

Sincerely,

Atentamente,

Mark B. Jinks
City Manager/Administrador de la Ciudad

Dear Alexandria Resident,

Estimado Residente de Alexandria,

It won't take much of your time to make a big difference!

iNo le tomará mucho de su tiempo para marcar una gran diferencia!

Your household has been randomly selected to participate in a survey about your community. Your survey will arrive in a few days.

Su hogar ha sido elegido al azar para participar en una encuesta sobre su comunidad. Su encuesta le llegará dentro de pocos días.

Thank you for helping create a better City!

iGracias por ayudar a crear una Alexandria mejor!

Sincerely,

Atentamente,

Mark B. Jinks
City Manager/Administrador de la Ciudad

Dear Alexandria Resident,

Estimado Residente de Alexandria,

It won't take much of your time to make a big difference!

iNo le tomará mucho de su tiempo para marcar una gran diferencia!

Your household has been randomly selected to participate in a survey about your community. Your survey will arrive in a few days.

Su hogar ha sido elegido al azar para participar en una encuesta sobre su comunidad. Su encuesta le llegará dentro de pocos días.

Thank you for helping create a better City!

iGracias por ayudar a crear una Alexandria mejor!

Sincerely,

Atentamente,

Mark B. Jinks
City Manager/Administrador de la Ciudad

Dear Alexandria Resident,

Estimado Residente de Alexandria,

It won't take much of your time to make a big difference!

iNo le tomará mucho de su tiempo para marcar una gran diferencia!

Your household has been randomly selected to participate in a survey about your community. Your survey will arrive in a few days.

Su hogar ha sido elegido al azar para participar en una encuesta sobre su comunidad. Su encuesta le llegará dentro de pocos días.

Thank you for helping create a better City!

iGracias por ayudar a crear una Alexandria mejor!

Sincerely,

Atentamente,

Mark B. Jinks
City Manager/Administrador de la Ciudad



301 King Street, Suite 3500
Alexandria, VA 22314

Presorted
First Class Mail
US Postage
PAID
Boulder, CO
Permit NO. 94



301 King Street, Suite 3500
Alexandria, VA 22314

Presorted
First Class Mail
US Postage
PAID
Boulder, CO
Permit NO. 94



301 King Street, Suite 3500
Alexandria, VA 22314

Presorted
First Class Mail
US Postage
PAID
Boulder, CO
Permit NO. 94



301 King Street, Suite 3500
Alexandria, VA 22314

Presorted
First Class Mail
US Postage
PAID
Boulder, CO
Permit NO. 94

Dear Alexandria Resident,

Just a reminder – if you have not yet completed Alexandria’s 2016 Resident Survey, please do so.

Your participation in this survey is very important – your answers will help the Alexandria City Council make decisions that affect your community.

Please complete the survey online at: www.n-r-c.com/survey/alexandriava.htm and enter your unique password. Your password can be found above your address. The City of Alexandria fully complies with Title VI of the Civil Rights Act of 1964 and Title II of the Americans with Disabilities Act, as amended, and related statutes and regulations in all programs and activities. For more information, or for an accommodation, see www.alexandriava.gov or call (703) 746-3140.

Thank you very much!

Mark B. Jinks
City Manager/Administrador de la Ciudad

Estimado residente de la Ciudad de Alexandria,

Solamente un recordatorio – si usted aún no ha completado la Encuesta Residente del 2016 de la Ciudad de Alexandria, por favor hágalo.

Su participación en esta encuesta es muy importante – sus respuestas le ayudarán al Consejo Municipal de Alexandria para tomar decisiones que afectan nuestra comunidad.

También puede completar la encuesta en línea en español en: www.n-r-c.com/survey/alexandriava.htm e ingrese su contraseña única. La contraseña se encuentra por encima de su dirección. La Ciudad de Alexandria cumple totalmente con Título VI de la Ley de Derechos Civiles de 1964 y Título II de la Ley sobre Estadounidenses con Discapacidades, en su forma modificada, y estatutos relacionados y reglamentos en todos programas y actividades. Para más información, o para una acomodación, visite www.alexandriava.gov o llame (703) 746-3140.

Para la versión en español haga clic en “Español” en la esquina superior a mano derecha.

¡Muchas gracias!

Mark B. Jinks
City Manager/Administrador de la Ciudad

Dear Alexandria Resident,

Just a reminder – if you have not yet completed Alexandria’s 2016 Resident Survey, please do so.

Your participation in this survey is very important – your answers will help the Alexandria City Council make decisions that affect your community.

Please complete the survey online at: www.n-r-c.com/survey/alexandriava.htm and enter your unique password. Your password can be found above your address. The City of Alexandria fully complies with Title VI of the Civil Rights Act of 1964 and Title II of the Americans with Disabilities Act, as amended, and related statutes and regulations in all programs and activities. For more information, or for an accommodation, see www.alexandriava.gov or call (703) 746-3140.

Thank you very much!

Mark B. Jinks
City Manager/Administrador de la Ciudad

Estimado residente de la Ciudad de Alexandria,

Solamente un recordatorio – si usted aún no ha completado la Encuesta Residente del 2016 de la Ciudad de Alexandria, por favor hágalo.

Su participación en esta encuesta es muy importante – sus respuestas le ayudarán al Consejo Municipal de Alexandria para tomar decisiones que afectan nuestra comunidad.

También puede completar la encuesta en línea en español en: www.n-r-c.com/survey/alexandriava.htm e ingrese su contraseña única. La contraseña se encuentra por encima de su dirección. La Ciudad de Alexandria cumple totalmente con Título VI de la Ley de Derechos Civiles de 1964 y Título II de la Ley sobre Estadounidenses con Discapacidades, en su forma modificada, y estatutos relacionados y reglamentos en todos programas y actividades. Para más información, o para una acomodación, visite www.alexandriava.gov o llame (703) 746-3140.

Para la versión en español haga clic en “Español” en la esquina superior a mano derecha.

¡Muchas gracias!

Mark B. Jinks
City Manager/Administrador de la Ciudad

Dear Alexandria Resident,

Just a reminder – if you have not yet completed Alexandria’s 2016 Resident Survey, please do so.

Your participation in this survey is very important – your answers will help the Alexandria City Council make decisions that affect your community.

Please complete the survey online at: www.n-r-c.com/survey/alexandriava.htm and enter your unique password. Your password can be found above your address. The City of Alexandria fully complies with Title VI of the Civil Rights Act of 1964 and Title II of the Americans with Disabilities Act, as amended, and related statutes and regulations in all programs and activities. For more information, or for an accommodation, see www.alexandriava.gov or call (703) 746-3140.

Thank you very much!

Mark B. Jinks
City Manager/Administrador de la Ciudad

Estimado residente de la Ciudad de Alexandria,

Solamente un recordatorio – si usted aún no ha completado la Encuesta Residente del 2016 de la Ciudad de Alexandria, por favor hágalo.

Su participación en esta encuesta es muy importante – sus respuestas le ayudarán al Consejo Municipal de Alexandria para tomar decisiones que afectan nuestra comunidad.

También puede completar la encuesta en línea en español en: www.n-r-c.com/survey/alexandriava.htm e ingrese su contraseña única. La contraseña se encuentra por encima de su dirección. La Ciudad de Alexandria cumple totalmente con Título VI de la Ley de Derechos Civiles de 1964 y Título II de la Ley sobre Estadounidenses con Discapacidades, en su forma modificada, y estatutos relacionados y reglamentos en todos programas y actividades. Para más información, o para una acomodación, visite www.alexandriava.gov o llame (703) 746-3140.

Para la versión en español haga clic en “Español” en la esquina superior a mano derecha.

¡Muchas gracias!

Mark B. Jinks
City Manager/Administrador de la Ciudad

Dear Alexandria Resident,

Just a reminder – if you have not yet completed Alexandria’s 2016 Resident Survey, please do so.

Your participation in this survey is very important – your answers will help the Alexandria City Council make decisions that affect your community.

Please complete the survey online at: www.n-r-c.com/survey/alexandriava.htm and enter your unique password. Your password can be found above your address. The City of Alexandria fully complies with Title VI of the Civil Rights Act of 1964 and Title II of the Americans with Disabilities Act, as amended, and related statutes and regulations in all programs and activities. For more information, or for an accommodation, see www.alexandriava.gov or call (703) 746-3140.

Thank you very much!

Mark B. Jinks
City Manager/Administrador de la Ciudad

Estimado residente de la Ciudad de Alexandria,

Solamente un recordatorio – si usted aún no ha completado la Encuesta Residente del 2016 de la Ciudad de Alexandria, por favor hágalo.

Su participación en esta encuesta es muy importante – sus respuestas le ayudarán al Consejo Municipal de Alexandria para tomar decisiones que afectan nuestra comunidad.

También puede completar la encuesta en línea en español en: www.n-r-c.com/survey/alexandriava.htm e ingrese su contraseña única. La contraseña se encuentra por encima de su dirección. La Ciudad de Alexandria cumple totalmente con Título VI de la Ley de Derechos Civiles de 1964 y Título II de la Ley sobre Estadounidenses con Discapacidades, en su forma modificada, y estatutos relacionados y reglamentos en todos programas y actividades. Para más información, o para una acomodación, visite www.alexandriava.gov o llame (703) 746-3140.

Para la versión en español haga clic en “Español” en la esquina superior a mano derecha.

¡Muchas gracias!

Mark B. Jinks
City Manager/Administrador de la Ciudad



301 King Street, Suite 3500
Alexandria, VA 22314

Presorted
First Class Mail
US Postage
PAID
Boulder, CO
Permit NO. 94



301 King Street, Suite 3500
Alexandria, VA 22314

Presorted
First Class Mail
US Postage
PAID
Boulder, CO
Permit NO. 94



301 King Street, Suite 3500
Alexandria, VA 22314

Presorted
First Class Mail
US Postage
PAID
Boulder, CO
Permit NO. 94



301 King Street, Suite 3500
Alexandria, VA 22314

Presorted
First Class Mail
US Postage
PAID
Boulder, CO
Permit NO. 94



City of Alexandria
301 King Street, Suite 3500
Alexandria, VA 22314

Phone: 703-746-3724
www.alexandria.gov

December 2015

Dear City of Alexandria Resident:

Please help us shape the future of Alexandria! You have been selected at random to participate in the 2016 Alexandria Resident Survey.

Please take a few minutes to fill out the enclosed survey. Your participation in this survey is very important – especially since not every household will receive the survey. Your feedback will help Alexandria make decisions that affect our City.

A few things to remember:

- **Your responses are completely anonymous.**
- In order to hear from a diverse group of residents, the adult 18 years or older in your household who most recently had a birthday should complete this survey.
- **You may return the survey by mail in the enclosed postage-paid envelope.**
- **You can complete the survey online. Just go to:**
www.n-r-c.com/survey/alexandriava.htm
and enter your unique password. Your password can be found in the upper left-hand corner of this page.

If you have any questions about the survey please call City staff at 703-746-3724. The City of Alexandria fully complies with Title VI of the Civil Rights Act of 1964 and Title II of the Americans with Disabilities Act, as amended, and related statutes and regulations in all programs and activities. For more information, or for an accommodation, see www.alexandriava.gov or call 703-746-3140. Results of this survey will be published in Spring 2016.

Thank you for your time and participation!

Sincerely,

Estimado Residente de la Ciudad de Alexandria:

¡Por favor ayúdenos a moldear el futuro de Alexandria! Usted ha sido seleccionado al azar para participar en la Encuesta de Residente de Alexandria del 2016.

Por favor tome unos minutos para completar la encuesta adjunta; si usted preferiría completar la encuesta en español, por favor siga las instrucciones abajo para acceder a la encuesta en español por medio de la red. Su participación en esta encuesta es muy importante – especialmente porque no todos los hogares recibirán la encuesta. Sus observaciones le ayudarán a Alexandria tomar decisiones que afectarán a nuestra Ciudad.

Algunas cosas para recordar:

- **Sus respuestas son completamente anónimas.**
- Para poder escuchar a un grupo diverso de residentes, el adulto de 18 años o más en su hogar que haya celebrado su cumpleaños más recientemente debe completar esta encuesta.
- **También puede completar la encuesta en español en línea. Visite:**
www.n-r-c.com/survey/alexandriava.htm
e ingrese su contraseña única. Puede se encuentra la contraseña en la esquina izquierda superior de esta página.

Para la versión en español haga clic en “Español” en la esquina superior a mano derecha.

Si tiene alguna pregunta sobre la encuesta por favor llame al personal de la Ciudad al 703-746-3724. La Ciudad de Alexandria cumple totalmente con Título VI de la Ley de Derechos Civiles de 1964 y Título II de la Ley sobre Estadounidenses con Discapacidades, en su forma modificada, y estatutos relacionados y reglamentos en todos programas y actividades. Para más información, o para una acomodación, visite www.alexandriava.gov o llame 703-746-3140. Los resultados de esta encuesta serán publicados en la primavera de 2016.

¡Gracias por su tiempo y participación!

Atentamente,

Mark B. Jinks
City Manager/Administrador de la Ciudad



City of Alexandria
301 King Street, Suite 3500
Alexandria, VA 22314

Phone: 703-746-3724
www.alexandria.gov

January 2016

Dear City of Alexandria Resident:

Here's a second chance if you haven't already responded to the 2016 Alexandria Resident Survey! **(If you completed it and sent it back, we thank you for your time and ask you to recycle this survey. Please do not respond twice.)**

Please help us shape the future of Alexandria! You have been selected at random to participate in the 2016 Alexandria Resident Survey.

Please take a few minutes to fill out the enclosed survey. Your participation in this survey is very important – especially since not every household will receive the survey. Your feedback will help Alexandria make decisions that affect our City.

A few things to remember:

- **Your responses are completely anonymous.**
- In order to hear from a diverse group of residents, the adult 18 years or older in your household who most recently had a birthday should complete this survey.
- **You can complete the survey online. Just go to:**
www.n-r-c.com/survey/alexandriava.htm
and enter your unique password. Your password can be found in the upper left-hand corner of this page.

If you have any questions about the survey please call City staff at 703-746-3724. The City of Alexandria fully complies with Title VI of the Civil Rights Act of 1964 and Title II of the Americans with Disabilities Act, as amended, and related statutes and regulations in all programs and activities. For more information, or for an accommodation, see www.alexandriava.gov or call 703-746-3140. Results of this survey will be published in Spring 2016.

Thank you for your time and participation!

Sincerely,

Estimado Residente de la Ciudad de Alexandria:

¡Aquí tiene una segunda oportunidad si usted aún no ha respondido a la Encuesta de Residente de Alexandria del 2016! **(Si usted la completó y la devolvió, le damos las gracias por su tiempo y le pedimos que recicle esta encuesta. Por favor no responda dos veces.)**

¡Por favor ayúdenos a moldear el futuro de Alexandria! Usted ha sido seleccionado al azar para participar en la Encuesta de Residente de Alexandria del 2016.

Por favor tome unos minutos para completar la encuesta adjunta; si usted preferiría completar la encuesta en español, por favor siga las instrucciones abajo para acceder a la encuesta en español por medio de la red. Su participación en esta encuesta es muy importante – especialmente porque no todos los hogares recibirán la encuesta. Sus observaciones le ayudarán a Alexandria tomar decisiones que afectarán a nuestra Ciudad.

Algunas cosas para recordar:

- **Sus respuestas son completamente anónimas.**
- Para poder escuchar a un grupo diverso de residentes, el adulto de 18 años o más en su hogar que haya celebrado su cumpleaños más recientemente debe completar esta encuesta.
- **También puede completar la encuesta en español en línea. Visite:**
www.n-r-c.com/survey/alexandriava.htm
e ingrese su contraseña única. Puede se encuentra la contraseña en la esquina izquierda superior de esta página.

Para la versión en español haga clic en "Español" en la esquina superior a mano derecha.

Si tiene alguna pregunta sobre la encuesta por favor llame al personal de la Ciudad al 703-746-3724. La Ciudad de Alexandria cumple totalmente con Título VI de la Ley de Derechos Civiles de 1964 y Título II de la Ley sobre Estadounidenses con Discapacidades, en su forma modificada, y estatutos relacionados y reglamentos en todos programas y actividades. Para más información, o para una acomodación, visite www.alexandriava.gov o llame 703-746-3140. Los resultados de esta encuesta serán publicados en la primavera de 2016.

¡Gracias por su tiempo y participación!

Atentamente,

Mark B. Jinks
City Manager/Administrador de la Ciudad

The City of Alexandria 2016 Resident Survey

Please complete this questionnaire if you are the adult (age 18 or older) in the household who most recently had a birthday. The adult's year of birth does not matter. Please select the response (by circling the number or checking the box) that most closely represents your opinion for each question. Your responses are anonymous and will be reported in group form only. The City of Alexandria fully complies with Title VI of the Civil Rights Act of 1964 and Title II of the Americans with Disabilities Act, as amended, and related statutes and regulations in all programs and activities. For more information, or for an accommodation, see www.alexandriava.gov or call (703) 746-3140.

1. Please rate each of the following aspects of quality of life in Alexandria:

	<i>Excellent</i>	<i>Good</i>	<i>Fair</i>	<i>Poor</i>	<i>Don't know</i>
Alexandria as a place to live.....	1	2	3	4	5
Your neighborhood as a place to live.....	1	2	3	4	5
Alexandria as a place to raise children.....	1	2	3	4	5
Alexandria as a place to work.....	1	2	3	4	5
Alexandria as a place to visit.....	1	2	3	4	5
Alexandria as a place to retire.....	1	2	3	4	5
The overall quality of life in Alexandria	1	2	3	4	5

2. Please rate each of the following characteristics as they relate to Alexandria as a whole:

	<i>Excellent</i>	<i>Good</i>	<i>Fair</i>	<i>Poor</i>	<i>Don't know</i>
Overall feeling of safety in Alexandria	1	2	3	4	5
Overall ease of getting to the places you usually have to visit	1	2	3	4	5
Quality of overall natural environment in Alexandria.....	1	2	3	4	5
Overall "built environment" of Alexandria (including overall design, buildings, parks and transportation systems)	1	2	3	4	5
Health and wellness opportunities in Alexandria	1	2	3	4	5
Overall opportunities for education and enrichment.....	1	2	3	4	5
Overall economic health of Alexandria	1	2	3	4	5
Sense of community.....	1	2	3	4	5
Overall image or reputation of Alexandria.....	1	2	3	4	5
Historic character reflected in built environment, exhibits, and events	1	2	3	4	5

3. Please indicate how likely or unlikely you are to do each of the following:

	<i>Very likely</i>	<i>Somewhat likely</i>	<i>Somewhat unlikely</i>	<i>Very unlikely</i>	<i>Don't know</i>
Recommend living in Alexandria to someone who asks.....	1	2	3	4	5
Remain in Alexandria for the next five years	1	2	3	4	5

4. Please rate how safe or unsafe you feel:

	<i>Very safe</i>	<i>Somewhat safe</i>	<i>Neither safe nor unsafe</i>	<i>Somewhat unsafe</i>	<i>Very unsafe</i>	<i>Don't know</i>
In your neighborhood during the day.....	1	2	3	4	5	6
In Alexandria's downtown area (i.e. Old Town) during the day.....	1	2	3	4	5	6

5. Please rate each of the following characteristics as they relate to Alexandria as a whole:

	<i>Excellent</i>	<i>Good</i>	<i>Fair</i>	<i>Poor</i>	<i>Don't know</i>
Traffic flow on major streets	1	2	3	4	5
Ease of public parking.....	1	2	3	4	5
Ease of travel by car in Alexandria	1	2	3	4	5
Ease of travel by public transportation in Alexandria.....	1	2	3	4	5
Ease of travel by bicycle in Alexandria	1	2	3	4	5
Ease of walking in Alexandria.....	1	2	3	4	5
Availability of paths and walking trails	1	2	3	4	5
Air quality	1	2	3	4	5
Cleanliness of Alexandria	1	2	3	4	5
Overall appearance of Alexandria	1	2	3	4	5
Public places where people want to spend time	1	2	3	4	5
Variety of housing options	1	2	3	4	5
Availability of affordable quality housing	1	2	3	4	5
Fitness opportunities (including exercise classes and paths or trails, etc.)	1	2	3	4	5
Recreational opportunities.....	1	2	3	4	5
Availability of affordable quality food.....	1	2	3	4	5
Availability of affordable quality health care	1	2	3	4	5
Availability of preventive health services	1	2	3	4	5
Availability of affordable quality mental health care	1	2	3	4	5

6. Please rate each of the following characteristics as they relate to Alexandria as a whole:

	<i>Excellent</i>	<i>Good</i>	<i>Fair</i>	<i>Poor</i>	<i>Don't know</i>
Availability of affordable quality child care/preschool	1	2	3	4	5
K-12 education	1	2	3	4	5
Adult educational opportunities.....	1	2	3	4	5
Opportunities to attend cultural/arts/music activities	1	2	3	4	5
Employment opportunities	1	2	3	4	5
Shopping opportunities.....	1	2	3	4	5
Cost of living in Alexandria	1	2	3	4	5
Overall quality of business and service establishments in Alexandria.....	1	2	3	4	5
Vibrant downtown/commercial area	1	2	3	4	5
Overall quality of new development in Alexandria	1	2	3	4	5
Opportunities to participate in social events and activities	1	2	3	4	5
Opportunities to volunteer.....	1	2	3	4	5
Opportunities to participate in community matters	1	2	3	4	5
Openness and acceptance of the community toward people of diverse backgrounds	1	2	3	4	5
Neighborliness of residents in Alexandria	1	2	3	4	5

7. Please indicate whether or not you have done each of the following in the last 12 months.

	<i>No</i>	<i>Yes</i>
Made efforts to conserve water	1	2
Made efforts to make your home more energy efficient	1	2
Observed a code violation or other hazard in Alexandria (weeds, abandoned buildings, etc.).....	1	2
Household member was a victim of a crime in Alexandria	1	2
Reported a crime to the police in Alexandria.....	1	2
Contacted the City of Alexandria (in-person, phone, email or web) for help or information.....	1	2
Contacted Alexandria elected officials (in-person, phone, email or web) to express your opinion	1	2
Had the flu shot	1	2

8. In the last 12 months, about how many times, if at all, have you or other household members done each of the following in Alexandria?

	<i>2 times a week or more</i>	<i>2-4 times a month</i>	<i>Once a month or less</i>	<i>Not at all</i>
Used Alexandria recreation centers or their services	1	2	3	4
Visited a neighborhood park or City park	1	2	3	4
Used Alexandria public libraries or their services.....	1	2	3	4
Attended a City-sponsored event.....	1	2	3	4
Used bus, rail, subway or other public transportation instead of driving.....	1	2	3	4
Carpooled with other adults or children instead of driving alone.....	1	2	3	4
Walked or biked instead of driving	1	2	3	4
Volunteered your time to some group/activity in Alexandria.....	1	2	3	4
Participated in a club	1	2	3	4
Talked to or visited with your immediate neighbors	1	2	3	4
Done a favor for a neighbor.....	1	2	3	4

9. Thinking about local public meetings (of local elected officials like City Council), in the last 12 months, about how many times, if at all, have you or other household members attended or watched a local public meeting?

	<i>2 times a week or more</i>	<i>2-4 times a month</i>	<i>Once a month or less</i>	<i>Not at all</i>
Attended a local public meeting	1	2	3	4
Watched (online or on television) a local public meeting.....	1	2	3	4

The City of Alexandria 2016 Resident Survey

10. Please rate the quality of each of the following services in Alexandria:

	<i>Excellent</i>	<i>Good</i>	<i>Fair</i>	<i>Poor</i>	<i>Don't know</i>
Police services	1	2	3	4	5
Fire services.....	1	2	3	4	5
Ambulance or emergency medical services	1	2	3	4	5
Crime prevention.....	1	2	3	4	5
Fire prevention and education.....	1	2	3	4	5
Traffic enforcement	1	2	3	4	5
Street repair	1	2	3	4	5
Street cleaning	1	2	3	4	5
Street lighting.....	1	2	3	4	5
Snow removal	1	2	3	4	5
Sidewalk maintenance	1	2	3	4	5
Traffic signal timing.....	1	2	3	4	5
Bus or transit services.....	1	2	3	4	5
Garbage collection	1	2	3	4	5
Recycling	1	2	3	4	5
Yard waste pick-up	1	2	3	4	5
Storm drainage	1	2	3	4	5
Drinking water.....	1	2	3	4	5
Sewer services	1	2	3	4	5
City parks.....	1	2	3	4	5
Recreation programs or classes.....	1	2	3	4	5
Recreation centers or facilities	1	2	3	4	5
Land use, planning and zoning.....	1	2	3	4	5
Code enforcement (weeds, abandoned buildings, etc.)	1	2	3	4	5
Animal control	1	2	3	4	5
Economic development	1	2	3	4	5
Health services	1	2	3	4	5
Public library services	1	2	3	4	5
Public information services	1	2	3	4	5
Cable television.....	1	2	3	4	5
Emergency preparedness (services that prepare the community for natural disasters or other emergency situations).....	1	2	3	4	5
Preservation of natural areas such as open space and greenbelts	1	2	3	4	5
Alexandria open space	1	2	3	4	5
City-sponsored special events	1	2	3	4	5
Overall customer service by Alexandria employees.....	1	2	3	4	5
Museums.....	1	2	3	4	5
Historic preservation.....	1	2	3	4	5
Street signs	1	2	3	4	5
Elections and voting process	1	2	3	4	5
Voter registration process	1	2	3	4	5
Tax collection	1	2	3	4	5

11. Overall, how would you rate the quality of the services provided by each of the following?

	<i>Excellent</i>	<i>Good</i>	<i>Fair</i>	<i>Poor</i>	<i>Don't know</i>
The City of Alexandria	1	2	3	4	5
The Federal Government	1	2	3	4	5

12. Please rate the following categories of Alexandria government performance:

	<i>Excellent</i>	<i>Good</i>	<i>Fair</i>	<i>Poor</i>	<i>Don't know</i>
The value of services for the taxes paid to Alexandria.....	1	2	3	4	5
The overall direction that Alexandria is taking.....	1	2	3	4	5
The job Alexandria government does at welcoming resident involvement	1	2	3	4	5
Overall confidence in Alexandria government	1	2	3	4	5
Generally acting in the best interest of the community	1	2	3	4	5
Being honest.....	1	2	3	4	5
Treating all residents fairly	1	2	3	4	5
Transparency to the public.....	1	2	3	4	5

13. Please rate how important, if at all, you think it is for the Alexandria community to focus on each of the following in the coming two years:

	<i>Essential</i>	<i>Very important</i>	<i>Somewhat important</i>	<i>Not at all important</i>
Overall feeling of safety in Alexandria	1	2	3	4
Overall ease of getting to the places you usually have to visit	1	2	3	4
Quality of overall natural environment in Alexandria.....	1	2	3	4
Overall “built environment” of Alexandria (including overall design, buildings, parks and transportation systems)	1	2	3	4
Health and wellness opportunities in Alexandria	1	2	3	4
Overall opportunities for education and enrichment.....	1	2	3	4
Overall economic health of Alexandria	1	2	3	4
Sense of community.....	1	2	3	4
Housing affordability	1	2	3	4
Parking and traffic management.....	1	2	3	4
Pre-K and child care (including access for low-income families)	1	2	3	4

14. Please indicate whether or not you currently perceive barriers to living in Alexandria based on your...:

	<i>No</i>	<i>Yes</i>
Age.....	1	2
Gender	1	2
Race.....	1	2
National origin.....	1	2
Religion.....	1	2
Disability.....	1	2
Sexual orientation or gender identity.....	1	2

15. Have you had contact with a City of Alexandria police officer within the last 12 months?

- Yes → Go to Q15A
- No → Go to Q16

15A. Thinking about your most recent contact, how would you rate the police officer?

- Excellent
- Good
- Fair
- Poor
- Don't know

16. Do you currently have 72 hours' worth of food, water (three gallons per person), medicines, and other supplies stocked for each person in your household in case of an emergency?

- No
- Yes

17. Have you discussed your household's emergency plan, which includes instructions for household members about where to go and what to do in the event of a disaster, with all members of your household?

- No
- Yes

18. Do you smoke cigarettes...

- Every day
- Some days
- Not at all

The City of Alexandria 2016 Resident Survey

Our last questions are about you and your household. Again, all of your responses to this survey are completely anonymous and will be reported in group form only.

D1. How often, if at all, do you do each of the following, considering all of the times you could?

	<i>Never</i>	<i>Rarely</i>	<i>Sometimes</i>	<i>Usually</i>	<i>Always</i>
Recycle at home	1	2	3	4	5
Purchase goods or services from a business located in Alexandria.....	1	2	3	4	5
Eat at least 5 portions of fruits and vegetables a day	1	2	3	4	5
Participate in moderate or vigorous physical activity	1	2	3	4	5
Read or watch local news (via television, paper, computer, etc.)	1	2	3	4	5
Vote in local elections.....	1	2	3	4	5

D2. Would you say that in general your health is:

- Excellent
 Very good
 Good
 Fair
 Poor

D3. What impact, if any, do you think the economy will have on your family income in the next 6 months? Do you think the impact will be:

- Very positive
 Somewhat positive
 Neutral
 Somewhat negative
 Very negative

D4. What is your employment status?

- Working full time for pay
 Working part time for pay
 Unemployed, looking for paid work
 Unemployed, not looking for paid work
 Fully retired

D5. Do you work inside the boundaries of Alexandria?

- Yes, outside the home
 Yes, from home
 No

D6. How many years have you lived in Alexandria?

- Less than 2 years 11-20 years
 2-5 years More than 20 years
 6-10 years

D7. Which best describes the building you live in?

- One family house detached from any other houses
 Building with two or more homes (duplex, townhome, apartment or condominium)
 Other

D8. Is this house or apartment...

- Rented
 Owned

D9. About how much is your monthly housing cost for the place you live (including rent, mortgage payment, property tax, property insurance and homeowners' association (HOA) fees)?

- Less than \$300 per month
 \$300 to \$599 per month
 \$600 to \$999 per month
 \$1,000 to \$1,499 per month
 \$1,500 to \$2,499 per month
 \$2,500 or more per month

D10. Do any children 17 or under live in your household?

- No Yes

D11. Are you or any other members of your household aged 65 or older?

- No Yes

D11A. How many people (including yourself) live in your household?

_____ People

D12. How much do you anticipate your household's total income before taxes will be for the current year? (Please include in your total income money from all sources for all persons living in your household.)

- Less than \$25,000
 \$25,000 to \$49,999
 \$50,000 to \$99,999
 \$100,000 to \$149,999
 \$150,000 or more

Please respond to both questions D13 and D14:

D13. Are you Spanish, Hispanic or Latino?

- No, not Spanish, Hispanic or Latino
 Yes, I consider myself to be Spanish, Hispanic or Latino

D14. What is your race? (Mark one or more races to indicate what race you consider yourself to be.)

- American Indian or Alaskan Native
 Asian, Asian Indian or Pacific Islander
 Black or African American
 White
 Other

D15. In which category is your age?

- 18-24 years 55-64 years
 25-34 years 65-74 years
 35-44 years 75 years or older
 45-54 years

D16. What is your sex?

- Female Male

D17. Do you consider a cell phone or land line your primary telephone number?

- Cell Land line Both

D18. Do you have access to wireless internet?

- No Yes

Thank you for completing this survey. Please return the completed survey in the postage-paid envelope to: National Research Center, Inc., PO Box 549, Belle Mead, NJ 08502

La Encuesta 2016 de Ciudadanos de la Ciudad de Alexandria

Por favor complete este cuestionario si usted es el adulto (de 18 años o mayor) del hogar que recientemente cumplió años. La fecha de nacimiento del adulto no importa. Por favor seleccione la respuesta (circulando el número o marcando la caja) que más represente su opinión para cada pregunta. Sus respuestas son anónimas y serán reportadas únicamente en forma de grupo.

1. Por favor clasifique cada uno de los siguientes aspectos sobre la calidad de vida en Alexandria:

	<i>Excelente</i>	<i>Bueno</i>	<i>Regular</i>	<i>Deficiente</i>	<i>No sé</i>
Alexandria como un lugar para vivir	1	2	3	4	5
Su vecindario como un lugar para vivir	1	2	3	4	5
Alexandria como un lugar para criar hijos	1	2	3	4	5
Alexandria como un lugar para trabajar	1	2	3	4	5
Alexandria como un lugar para visitar	1	2	3	4	5
Alexandria como un lugar para jubilarse/retirarse	1	2	3	4	5
La calidad de vida en general en Alexandria	1	2	3	4	5

2. Por favor clasifique cada una de las siguientes características relacionadas con Alexandria en su totalidad:

	<i>Excelente</i>	<i>Bueno</i>	<i>Regular</i>	<i>Deficiente</i>	<i>No sé</i>
Sentimiento en general de seguridad en Alexandria.....	1	2	3	4	5
Facilidad en general de llegar a los lugares que usted usualmente tiene que visitar	1	2	3	4	5
Calidad del ambiente natural de Alexandria en general	1	2	3	4	5
“Ambiente construido” en general de Alexandria (incluyendo diseño, edificios, parques y sistemas de transporte en general).....	1	2	3	4	5
Oportunidades de salud y bienestar en Alexandria	1	2	3	4	5
Oportunidades en general para educación y enriquecimiento	1	2	3	4	5
Salud económica en general de Alexandria.....	1	2	3	4	5
Sentido de comunidad.....	1	2	3	4	5
Imagen o reputación en general de Alexandria.....	1	2	3	4	5
Carácter histórico reflejado en el entorno construido, exposiciones y eventos.....	1	2	3	4	5

3. Por favor indique qué tan probable o improbable es usted de hacer cada uno de los siguientes:

	<i>Muy probable</i>	<i>Algo probable</i>	<i>Algo improbable</i>	<i>Muy improbable</i>	<i>No sé</i>
Recomendarle a vivir en Alexandria a alguien que pregunte.....	1	2	3	4	5
Permanecer en Alexandria por los próximos cinco años	1	2	3	4	5

4. Por favor clasifique qué tan seguro o inseguro se siente usted:

	<i>Muy seguro</i>	<i>Algo seguro</i>	<i>Ni seguro ni inseguro</i>	<i>Algo inseguro</i>	<i>Muy inseguro</i>	<i>No sé</i>
En su vecindario durante el día	1	2	3	4	5	6
En el área del centro de Alexandria (es decir, de la Ciudad Vieja) durante el día	1	2	3	4	5	6

5. Por favor clasifique cada una de las siguientes características relacionadas con Alexandria en su totalidad:

	<i>Excelente</i>	<i>Bueno</i>	<i>Regular</i>	<i>Deficiente</i>	<i>No sé</i>
Flujo de tráfico sobre calles principales.....	1	2	3	4	5
Facilidad de estacionamiento público	1	2	3	4	5
Facilidad para viajar en carro en Alexandria.....	1	2	3	4	5
Facilidad para viajar en transporte público en Alexandria	1	2	3	4	5
Facilidad para viajar en bicicleta en Alexandria.....	1	2	3	4	5
Facilidad de caminar en Alexandria	1	2	3	4	5
Disponibilidad de caminos y senderos para caminar	1	2	3	4	5
Calidad del aire.....	1	2	3	4	5
Limpieza de Alexandria.....	1	2	3	4	5
Apariencia general de Alexandria.....	1	2	3	4	5
Lugares públicos donde las personas quieran pasar el tiempo.....	1	2	3	4	5
Variedad en opciones de vivienda	1	2	3	4	5
Disponibilidad en viviendas de calidad a precios accesibles	1	2	3	4	5
Oportunidades para mejoras físicas (incluyendo clases de ejercicio y caminos o senderos, etc.)	1	2	3	4	5
Oportunidades de recreación	1	2	3	4	5
Disponibilidad de comida de calidad a precios accesibles	1	2	3	4	5
Disponibilidad en cuidados de calidad de salud a precios accesibles.....	1	2	3	4	5
Disponibilidad de servicios preventivos de salud	1	2	3	4	5
Disponibilidad de cuidados de calidad de salud mental a precios accesibles	1	2	3	4	5

6. Por favor clasifique cada una de las siguientes características relacionadas con Alexandria en su totalidad:

	<i>Excelente</i>	<i>Bueno</i>	<i>Regular</i>	<i>Deficiente</i>	<i>No sé</i>
Disponibilidad de cuidados de niños/escuelas preescolares de calidad y a precios accesibles	1	2	3	4	5
Educación K-12	1	2	3	4	5
Oportunidades educativas para adultos.....	1	2	3	4	5
Oportunidades para asistir a actividades culturales/artísticas/musicales.....	1	2	3	4	5
Oportunidades de empleo.....	1	2	3	4	5
Oportunidades para compras	1	2	3	4	5
El costo de vida en Alexandria.....	1	2	3	4	5
Calidad general de establecimientos de negocio y de servicio en Alexandria....	1	2	3	4	5
Área central/comercial de gran actividad	1	2	3	4	5
Calidad general de desarrollo nuevo en Alexandria	1	2	3	4	5
Oportunidades para participar en eventos y actividades sociales	1	2	3	4	5
Oportunidades para trabajo voluntario	1	2	3	4	5
Oportunidades para participar en asuntos comunitarios.....	1	2	3	4	5
Receptividad y aceptación de la comunidad hacia personas con orígenes diversos.....	1	2	3	4	5
Amabilidad de vecino de residentes en Alexandria	1	2	3	4	5

7. Por favor indique si usted ha realizado o no cada uno de los siguientes durante los últimos 12 meses.

	<i>No</i>	<i>Sí</i>
Se esforzó para conservar agua.....	1	2
Se esforzó para hacer su hogar más eficiente de energía	1	2
Observó una violación de código u otro peligro en Alexandria (hierbas, edificios abandonados, etc.)	1	2
Un miembro del hogar fue víctima de un crimen en Alexandria	1	2
Reportó un crimen a la policía en Alexandria	1	2
Almacenó provisiones en preparación para una emergencia	1	2
Contactó Alexandria (en persona, por teléfono, correo electrónico o red) para ayuda o información.....	1	2
Contactó oficiales electos de Alexandria (en persona, por teléfono, correo electrónico o red) para expresar su opinión	1	2
Recibió la vacuna antigripal	1	2

8. Durante los últimos 12 meses, ¿como cuántas veces, si alguna, han realizado usted u otros miembros del hogar cada uno de los siguientes en Alexandria?

	<i>2 veces por semana o más</i>	<i>2-4 veces por mes</i>	<i>Una vez al mes o menos</i>	<i>Nunca</i>
Utilizó centros de recreación o sus servicios en Alexandria	1	2	3	4
Visitó un parque del vecindario o de la ciudad.....	1	2	3	4
Utilizó bibliotecas públicas de Alexandria o sus servicios	1	2	3	4
Asistió a un evento patrocinado por la ciudad.....	1	2	3	4
Utilizó autobús, vía férrea, metro u otra transportación pública en vez de conducir	1	2	3	4
Compartió vehículo con otros adultos o niños en vez de conducir solo.....	1	2	3	4
Caminó o anduvo en bicicleta en vez de conducir	1	2	3	4
Ofreció voluntariamente su tiempo a algún grupo/alguna actividad en Alexandria	1	2	3	4
Participó en un club.....	1	2	3	4
Habló con o visitó a sus vecinos inmediatos	1	2	3	4
Le hizo un favor a un vecino	1	2	3	4

9. Pensando sobre reuniones públicas locales (de oficiales electos locales como el Concejo Ciudadano), durante los últimos 12 meses, ¿como cuántas veces, si alguna, han asistido a o visto usted u otros miembros del hogar una reunión pública local?

	<i>2 veces por semana o más</i>	<i>2-4 veces por mes</i>	<i>Una vez al mes o menos</i>	<i>Nunca</i>
Asistió a una reunión pública local	1	2	3	4
Vio (en línea o por televisión) una reunión pública local	1	2	3	4

La Encuesta 2016 de Ciudadanos de la Ciudad de Alexandria

10. Por favor clasifique la calidad de cada uno de los siguientes servicios en Alexandria:

	<i>Excelente</i>	<i>Bueno</i>	<i>Regular</i>	<i>Deficiente</i>	<i>No sé</i>
Servicios de policía.....	1	2	3	4	5
Servicios por incendio.....	1	2	3	4	5
Servicios de ambulancia o de emergencia médica.....	1	2	3	4	5
Prevención del crimen.....	1	2	3	4	5
Prevención de y educación sobre el incendio.....	1	2	3	4	5
Ejecución de leyes de tráfico.....	1	2	3	4	5
Reparación de calles.....	1	2	3	4	5
Limpieza de calles.....	1	2	3	4	5
Iluminación de calles.....	1	2	3	4	5
Desalojo de nieve.....	1	2	3	4	5
Mantenimiento de aceras.....	1	2	3	4	5
Cronometraje de las señales de tráfico (semáforos).....	1	2	3	4	5
Servicios de autobús o tránsito.....	1	2	3	4	5
Recogida de basura.....	1	2	3	4	5
Reciclaje.....	1	2	3	4	5
Recogida de desechos de patio.....	1	2	3	4	5
Desagüe de tormentas.....	1	2	3	4	5
Agua potable.....	1	2	3	4	5
Servicios de alcantarillado.....	1	2	3	4	5
Parques de la ciudad.....	1	2	3	4	5
Programas o clases de recreación.....	1	2	3	4	5
Centros o instalaciones públicas de recreación.....	1	2	3	4	5
Uso, planificación y división en zonas del terreno.....	1	2	3	4	5
Ejecución del código (hierbas, edificios abandonados, etc.).....	1	2	3	4	5
Control de animales.....	1	2	3	4	5
Desarrollo económico.....	1	2	3	4	5
Servicios de salud.....	1	2	3	4	5
Servicios de bibliotecas públicas.....	1	2	3	4	5
Servicios de información pública.....	1	2	3	4	5
Televisión por cable.....	1	2	3	4	5
Preparación de emergencias (servicios que preparan a la comunidad para desastres naturales u otras situaciones de emergencia).....	1	2	3	4	5
Preservación de áreas naturales tales como espacio abierto y zonas verdes.....	1	2	3	4	5
Espacio abierto de Alexandria.....	1	2	3	4	5
Eventos especiales patrocinados por la ciudad.....	1	2	3	4	5
Servicio en general al cliente por empleados de Alexandria.....	1	2	3	4	5
Museos.....	1	2	3	4	5
Conservación histórica.....	1	2	3	4	5
Letreros en las calles.....	1	2	3	4	5
Elecciones y proceso de votación.....	1	2	3	4	5
Proceso de inscripción de votantes.....	1	2	3	4	5
Recaudación de impuestos.....	1	2	3	4	5

11. En general, ¿cómo clasificaría usted la calidad de los servicios proporcionados por cada uno de los siguientes?

	<i>Excelente</i>	<i>Buena</i>	<i>Regular</i>	<i>Deficiente</i>	<i>No sé</i>
La Ciudad de Alexandria.....	1	2	3	4	5
El Gobierno Federal.....	1	2	3	4	5

12. Por favor clasifique las siguientes categorías de desempeño gubernamental de Alexandria:

	<i>Excelente</i>	<i>Bueno</i>	<i>Regular</i>	<i>Deficiente</i>	<i>No sé</i>
El valor de los servicios por los impuestos pagados a Alexandria.....	1	2	3	4	5
La dirección en general que está tomando Alexandria.....	1	2	3	4	5
El trabajo que realiza el gobierno de Alexandria para acoger la participación de los residentes.....	1	2	3	4	5
La confianza general en el gobierno de Alexandria.....	1	2	3	4	5
En lo general, actuando por el mejor interés de la comunidad.....	1	2	3	4	5
Ser honesto.....	1	2	3	4	5
Tratar a todos los residentes justamente.....	1	2	3	4	5
Transparencia ante el público.....	1	2	3	4	5

13. Por favor clasifique qué tan importante, si lo es, piensa que sea que la comunidad de Alexandria se concentre en cada uno de los siguientes durante los dos años venideros:

	<i>Esencial</i>	<i>Muy importante</i>	<i>Algo importante</i>	<i>No importante en absoluto</i>
Sentimiento en general de seguridad en Alexandria.....	1	2	3	4
Facilidad en general de llegar a los lugares que usted usualmente tiene que visitar	1	2	3	4
Calidad del ambiente natural de Alexandria en general	1	2	3	4
“Ambiente construido” en general de Alexandria (incluyendo diseño, edificios, parques y sistemas de transporte en general).....	1	2	3	4
Oportunidades de salud y bienestar en Alexandria	1	2	3	4
Oportunidades en general para educación y enriquecimiento	1	2	3	4
Salud económica en general de Alexandria.....	1	2	3	4
Sentido de comunidad	1	2	3	4
Asequibilidad de viviendas.....	1	2	3	4
Estacionamiento y gestión del tránsito.....	1	2	3	4
Pre-Kinder y cuidado de niños (incluido el acceso para familias de bajos ingresos)	1	2	3	4

14. Indique si percibe o no actualmente barreras para vivir en Alexandria debido a su...:

	<i>No</i>	<i>Sí</i>
Edad.....	1	2
Género	1	2
Raza.....	1	2
Origen nacional	1	2
Religión.....	1	2
Discapacidad.....	1	2
Orientación sexual o identidad de género	1	2

15. ¿Ha tenido contacto con un oficial de policía de la Ciudad de Alexandria en los últimos 12 meses?

- Sí → Vaya a la P15A
- No → Vaya a la P16

15A. Pensando en su contacto más reciente, ¿cómo calificaría al oficial de policía?

- Excelente
- Bueno
- Aceptable
- Deficiente
- No sé

16. ¿Actualmente tiene el equivalente a 72 horas de comida, agua (tres galones por persona), medicamentos y otros productos almacenados para cada persona en su casa en caso de haber una emergencia?

- No
- Sí

17. ¿Ha comunicado a todos los miembros de su hogar su plan de emergencia de la casa, el cual incluye instrucciones para los miembros del hogar acerca de dónde ir y qué hacer en caso de un desastre?

- No
- Sí

18. Fuma cigarrillos...

- Todos los días
- Algunos días
- Nunca

La Encuesta 2016 de Ciudadanos de la Ciudad de Alexandria

Nuestras últimas preguntas se tratan de usted y su hogar. De nuevo, todas sus respuestas a esta encuesta son completamente anónimas y serán reportadas únicamente en forma de grupo.

D1. ¿Qué tan a menudo, si lo hace, realiza usted cada uno de los siguientes, considerando todas las veces que podría?

	<i>Nunca</i>	<i>Rara vez</i>	<i>A Veces</i>	<i>Usualmente</i>	<i>Siempre</i>
Reciclar en el hogar	1	2	3	4	5
Comprar bienes o servicios de una empresa localizada en Alexandria.....	1	2	3	4	5
Comer por lo menos 5 porciones de frutas y vegetales al día	1	2	3	4	5
Participar en actividad física moderada o vigorosa.....	1	2	3	4	5
Leer o mirar noticias locales (vía televisión, periódico, computadora, etc.)	1	2	3	4	5
Votar en elecciones locales	1	2	3	4	5

D2. Usted diría que en general su salud es:

- Excelente
 Muy buena
 Buena
 Regular
 Deficiente

D3. ¿Qué impacto, si alguno, cree usted que tendrá la economía sobre su ingreso familiar en los próximos 6 meses? Cree usted que el impacto será:

- Muy positivo
 Algo positivo
 Neutro
 Algo negativo
 Muy negativo

D4. ¿Cuál es su estado de empleo?

- Trabajando tiempo completo para pago
 Trabajando medio tiempo para pago
 Sin empleo, buscando trabajo pagado
 Sin empleo, no buscando trabajo pagado
 Completamente retirado/jubilado

D5. ¿Trabaja usted dentro de los límites de Alexandria?

- Sí, fuera del hogar
 Sí, desde el hogar
 No

D6. ¿Cuántos años ha vivido usted en Alexandria?

- Menos de 2 años 11-20 años
 2-5 años Más de 20 años
 6-10 años

D7. ¿Cuál describe mejor el edificio en que vive?

- Casa individual de familia separada de cualquier otra casa
 Edificio con dos o más casas (dúplex, townhome, apartamento o condominio)
 Otro

D8. Esta casa u este apartamento es...

- Alquilado
 Suyo propio

D9. ¿Como cuánto es su costo mensual de alojamiento para el lugar donde vive usted (incluyendo alquiler, pago de hipoteca, impuesto de propiedad, seguro de propiedad y tarifas de la asociación de dueños de hogar (HOA))?

- Menos de \$300 por mes
 De \$300 a \$599 por mes
 De \$600 a \$999 por mes
 De \$1,000 a \$1,499 por mes
 De \$1,500 a \$2,499 por mes
 \$2,500 o más por mes

D10. ¿Algún niño de 17 años o menos vive en su hogar?

- No Sí

D11. ¿Usted u otros miembros de su hogar tienen edad de 65 años o mayor?

- No Sí

D11A. ¿Cuánta gente (incluyéndose usted mismo) vive en su hogar?

_____ Personas

D12. ¿Cuánto espera que será el ingreso total de su hogar antes de los impuestos para el año actual? (Por favor incluya su ingreso total de dinero de todas las fuentes para todas las personas que viven en su hogar.)

- Menos de \$25,000
 De \$25,000 a \$49,999
 De \$50,000 a \$99,999
 De \$100,000 a \$149,999
 \$150,000 o más

Por favor responda ambas preguntas D13 y D14:

D13. ¿Es usted Español, Hispano o Latino?

- No, ni Español, ni Hispano ni Latino
 Sí, me considero como Español, Hispano o Latino

D14. ¿Cuál es su raza? (Marque una o más razas para indicar de cuál raza se considera usted.)

- Indígena Americana o Nativo de Alaska
 Asiática, Indígena Asiática o Isleña del Pacífico
 Negra o Afroamericana
 Blanca
 Otra

D15. ¿Dentro de cuál categoría está su edad?

- 18-24 años 55-64 años
 25-34 años 65-74 años
 35-44 años 75 años o mayor
 45-54 años

D16. ¿Cuál es su género?

- Femenino Masculino

D17. ¿Considera usted un teléfono celular o una línea instalada como su número primordial de teléfono?

- Celular Línea instalada Ambos

D18. ¿Tiene acceso a internet inalámbrico?

- No Sí

Gracias por completar esta encuesta. Por favor devuelva la encuesta completada en el sobre pre-pagado al: National Research Center, Inc., PO Box 549, Belle Mead, NJ 08502



City of Alexandria
301 King Street, Suite 3500
Alexandria, VA 22314

Presorted
First Class Mail
US Postage
PAID
Boulder, CO
Permit NO.94