



King/Callahan/Russell Intersection Safety Project

**Public Meeting #3
December 8, 2015**



Meeting Format

- Introduction & Presentation (6:30-7:15)
- General Questions (7:15-7:45)
- Feedback Forms (8:15-8:25)
- Next Steps and Adjourn (8:25-8:30)

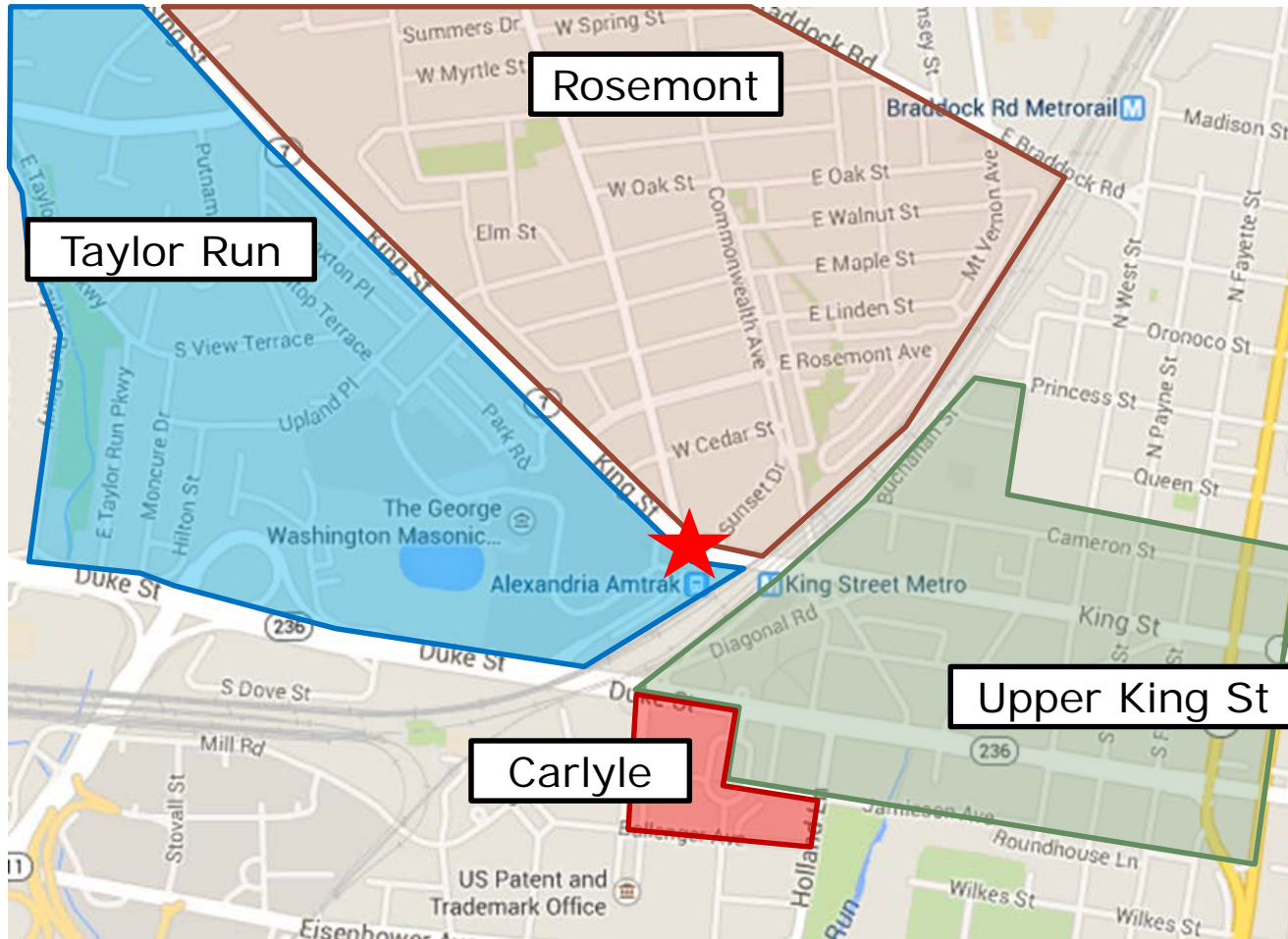
Project Limits



Intersection of King Street, Callahan Drive, and Russell Road

Federal Transit Administration Funded Grant Project to
**IMPROVE PEDESTRIAN AND BICYCLE SAFETY AND
ACCESS TO TRANSIT**

Citizens' Associations





Project Schedule

- Present Concept Plans at Public Meeting #3 – Winter 2015
- Move forward with full design and review of the proposed concept
- Implementation 2016-2017

What We Heard - Meeting 1

- Narrow Sidewalks
- Long Crossing Distances
- Accessibility concerns
- Cyclists riding on sidewalk



- No designated space for cyclists
- Unpredictable turning movements
- Poor access to the Metrorail station

What We Heard – Meeting 1

- Complicated lane alignment
- Long queues during peak hours



- Concerns about existing and future traffic on neighborhood streets

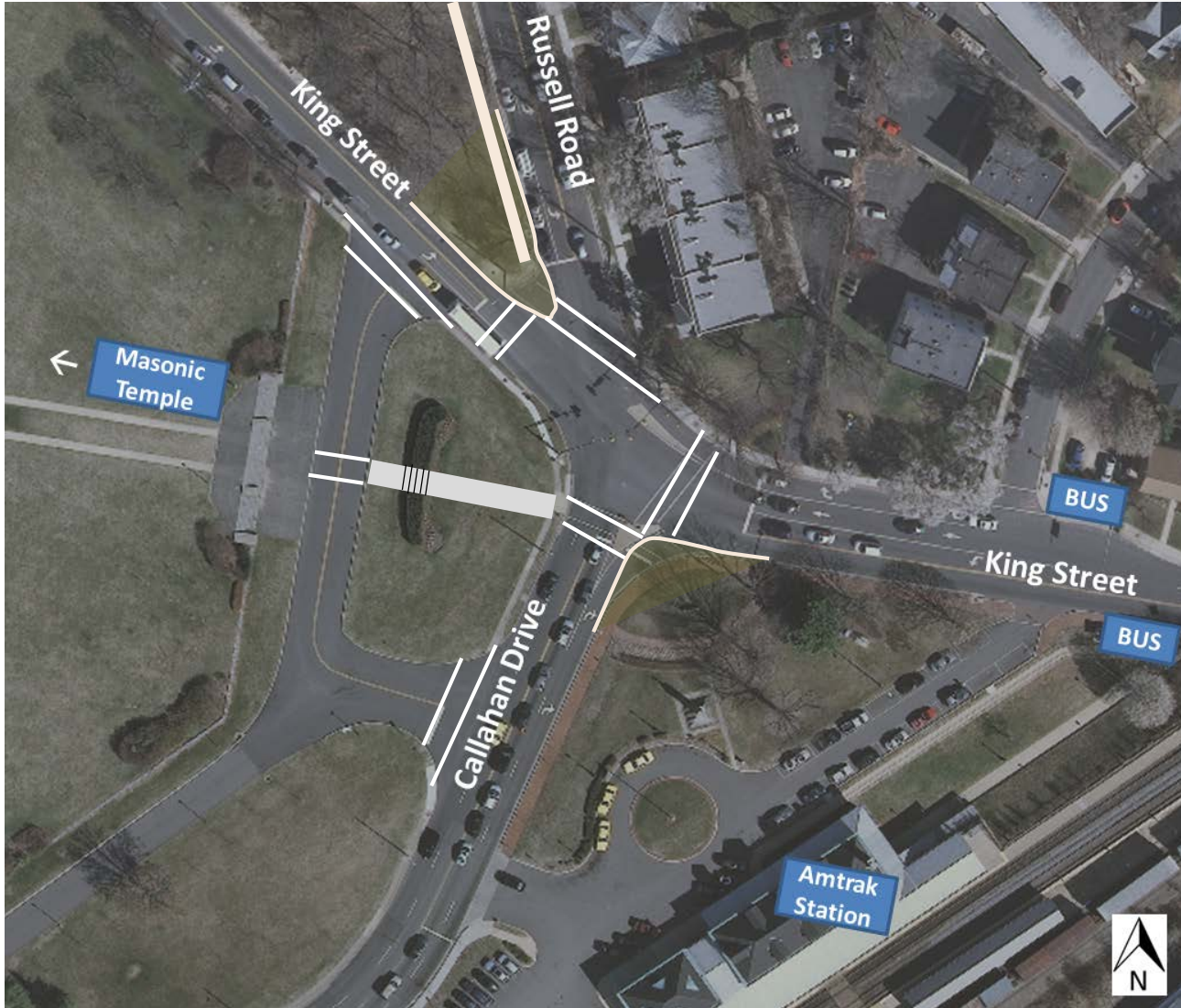
Comments from past two meetings

| Comments | Issue |
|---|----------------------|
| 1 Provide ADA compliant sidewalks and curb ramps | Pedestrian Safety |
| 2 Reduce speed of vehicles turning right from Callahan to King | Speeding |
| 3 Add pedestrian island on Russell to shorten crossing distance | Pedestrian Safety |
| 4 Remove right turn lane from Callahan to King | Pedestrian Safety |
| 5 Ban right turn from SB Russell Rd to WB King Street | Congestion |
| 6 Remove bus stops on King St - stopped buses block traffic | Pedestrian Safety |
| 7 Provide more clear bicycle lanes/markings | Bike Safety |
| 8 Confusing lane markings | Motorist Safety |
| 9 Shorten crossing distances | Pedestrian Safety |
| 10 Refurbish markings & improve visibility of crosswalks | Pedestrian Safety |
| 11 Provide more crosswalks and at all existing crossings | Pedestrian Safety |
| 12 Install upgraded pedestrian signals | Pedestrian Safety |
| 13 Decrease vehicle speeds approaching and through the intersection | Speeding |
| 14 Vehicles using Masonic Temple road to circumvent intersection | Pedestrian Safety |
| 15 Add signs asking drivers to slow down | Pedestrian Safety |
| 16 Disallow right turns on red | Pedestrian Safety |
| 17 Maintain and improve access to bus stops at Sunset and King. | Pedestrian Safety |
| 18 Reduce the skew of the crosswalks | Pedestrian Safety |
| 19 Provide crosswalk to bus stop at Sunset and King (include flashing beacon) | Pedestrian Safety |
| 20 Provide pedestrian and bicycle access to proposed Amtrak-Metro tunnel | Pedestrian Safety |
| 21 Narrow lanes to slow down vehicles | Speeding |
| 22 Add bike lanes on King Street and through intersections | Bike Safety |
| 23 Plant trees on Callahan to reduce speeds | Speeding/Streetscape |
| 24 Promote use of other routes in and out of old town to reduce VPH at intersection | Pedestrian Safety |
| 25 Widen sidewalks & remove obstructions (utility poles) | Pedestrian Safety |
| 26 Add leading pedestrian interval (LPI) to signal timing | Pedestrian Safety |
| 27 Increase police presence | Speeding |
| 28 Add sidewalk to West side of Russell Rd | Pedestrian Safety |
| 29 Vehicle movement from Sunset Dr to King is disruptive to traffic flow | Congestion |
| 31 Complete the planned pedestrian connection between Amtrak and Metro | Pedestrian Safety |
| 32 Improve lighting in and around intersection and under CSX tracks for pedestrians | Pedestrian Safety |
| 33 Replace pedestrian signal buttons | Pedestrian Safety |
| 34 Vehicles do not stop before making a right turn | Pedestrian Safety |
| 35 Better align movements through intersection | Pedestrian Safety |
| 36 Lights are obstructed | Pedestrian Safety |
| 37 Change the left turn from Russell to King to a straight and left turn | Congestion |
| 38 Add traffic signal under CSX tunnel | Pedestrian Safety |
| 39 Add pedestrian activated signals | Pedestrian Safety |
| 40 Consider banning left turns from Sunset Dr in peak hours | Congestion |
| 41 Change direction of Sunset Drive | Congestion |
| 42 Add "glow in the dark" crosswalks | Pedestrian Safety |
| 43 Remove left only lane from EB on King | Congestion |
| 44 Place signage in better less confusing locations | Pedestrian Safety |



What we Heard: Meeting #2

- Shorten crossing distance across Russell Road
- Provide new crossing walk and crossing opportunities
- Remove slip ramp and free right turn to slow vehicles and shorten crossing distances
- Install new pedestrian path from the Temple
- Install sidewalk along Russell where feasible



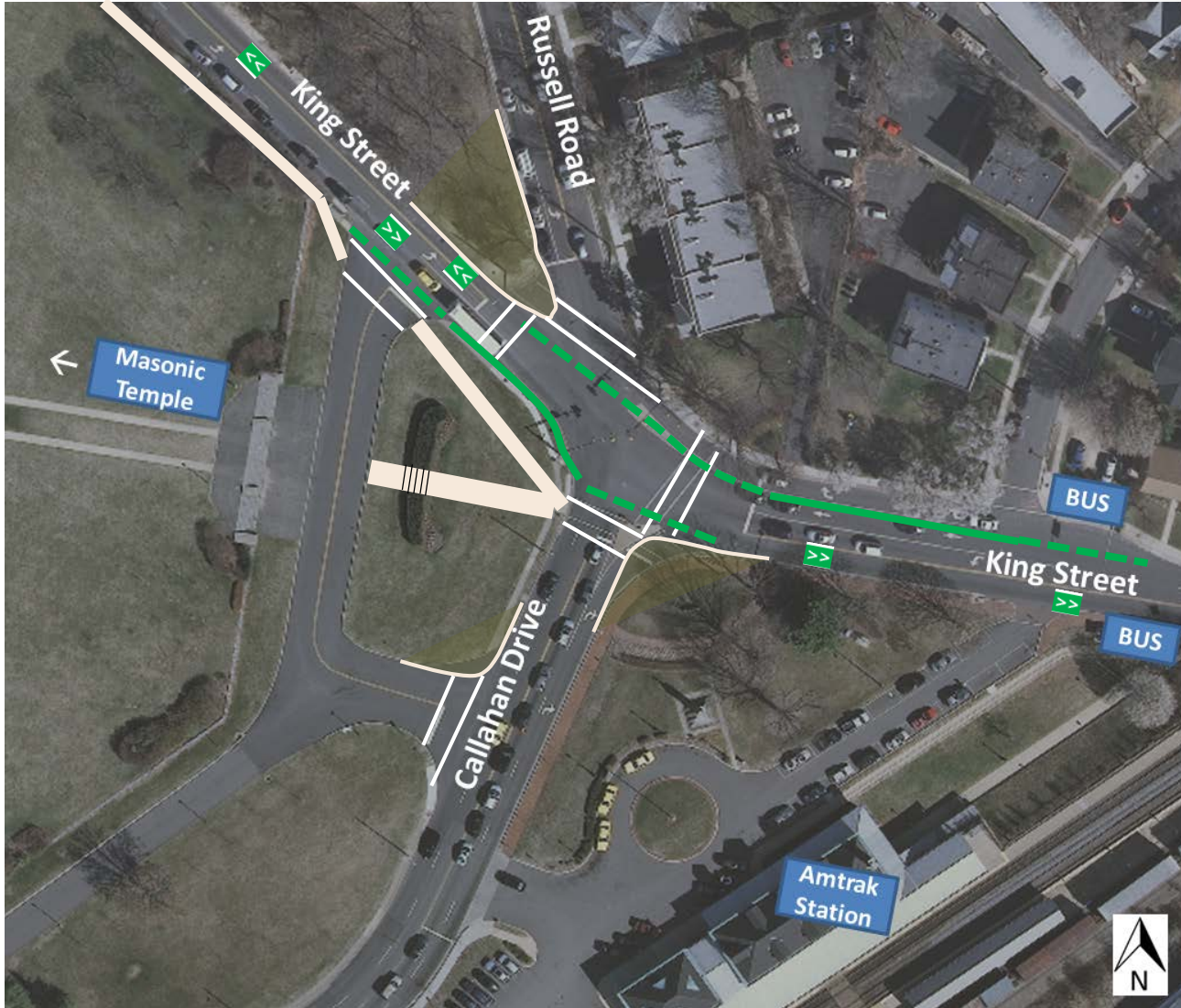
What we Heard: Meeting #2

- Ban right from Russell Road to King Street
 - 2 vehicles per hour making this movement
 - Shorten crossing distance by 15'-20'
 - Allows for new crosswalk with conflict free crossing time for pedestrians
- Upgrade crosswalks to high visibility
- Upgrade pedestrian signals



What we Heard: Meeting #2

- Install bike path through island to protect cyclists through intersection
- Combine with priority shared lane markings in roadway





Response to Concerns

- Developed options that:
 - Shorten pedestrian crossing distances and improve sidewalks
 - Slow right turning vehicles
 - Reduce queuing and lessen vehicle delay
 - Improve accessibility and safety
 - Give designated space for cyclists through the intersection
- INCLUDED ITEMS
 - Pedestrian countdown signals
 - ADA compliant curb ramps
 - High visibility crosswalks for some or all crossings



Next Steps

- Staff will evaluate comments from tonight's meeting
- Staff will work with consultant to finalize design



Thank You.

Questions, Comments and
Discussion

Hillary.Orr@AlexandriaVA.gov