



## MEMORANDUM

**TO:** Mark Jinks, City of Alexandria  
Julie Langan, Virginia Department of Historic Resources  
John M. Fowler, Advisory Council on Historic Preservation  
Keith Pettigrew, Alexandria Redevelopment & Housing Authority  
Debbie Ackmerman, Alexandria Historical Society  
August M. Walker, Church of God and Saints of Christ  
Michael Commisso, Alexandria Historical Restoration and Preservation Commission  
Bill Hendrickson, Historic Alexandria Resources Commission  
Karen S. DeVito, Catholics for Housing, Inc.  
Alex Guzman, Housing Opportunities Made Equal of Virginia, Inc.  
Delaitre J. Hollinger, National Association for the Preservation of African-American History and Culture  
Diane L. Charles, ALIVE! Inc.  
Gail C. Rothrock, Historic Alexandria Foundation  
Seth Tinkman, Alexandria Archaeological Commission  
Boyd Walker, Greater Alexandria Preservation Alliance  
Gregory Cord  
Nathaniel George  
Lila Mei Lee  
Elsie M. Mosqueda  
Mark Mueller  
Vivian Nava-Cord  
Judy Noritaki  
Robert G. Roe  
Ninette Sadusky

**CC:** Martin Lucero, Alexandria Redevelopment & Housing Authority (VHD LLC.)  
Sarah Scott, Alexandria Redevelopment & Housing Authority (VHD LLC.)  
Eleanor Breen, Alexandria Archaeology  
Garret Fesler, Alexandria Archaeology  
Boyd Sipe, WSSI  
Jeremy Smith, WSSI

**FROM:** Thomas Cuthbertson, Senior Archeologist, Thunderbird Archeology

**RE:** Management Summary: Site 44FX0160 Phase III (WSSI# 2682.04)

**DATE:** October 23, 2018

## Introduction

This management summary presents the results of Phase III excavations at Site 44FX0160, on North Patrick Street between Pendleton Street and Wythe Street. The site is situated on an urban lot that occupied the block bordered by North Patrick Street to the West, Wythe street to the north, North Alfred Street to the east, and Pendleton Street to the south in Alexandria, Virginia. The project area consists of western third of the block and sits on the first terrace on the western side of the Potomac River (Exhibits 1-3). Prior to the machine-excavation completed during the data recovery investigations, the site was approximately level with a subtle slope downward to the east.

The current development plans include construction of a mixed used commercial and residential building in place of the four original multifamily units which consisted of;

- Building 1 - 912 and 914 Wythe Street (DHR No. 100-0133-1328)  
625 and 627 Patrick Street (DHR No. 100-0133-0754),
- Building 2 - 619,621 and 623 Patrick Street (DHR No. 100-0133-0751)
- Building 3 - 609 and 611 Patrick Street (DHR No. 100-0133-0747)  
613 and 615 Patrick Street (DHR No. 100-0133-0749)
- Building 4 – 605 and 607 Patrick Street (DHR No. 100-0133-0745)  
913 and 915 Pendleton Street (DHR No. 100-0133-0948)

The Phase III data recovery described in this transmittal was undertaken as mitigation for adverse effects to Site 44AX0160 pursuant to consultations under Section 106 of the National Historic Preservation Act of 1966 (NHPA), as amended, and in accordance with the *Memorandum of Agreement Among The Alexandria Redevelopment and Housing Authority (ARHA), The Virginia State Historic Preservation Office, The Advisory Council on Historic Preservation, and The City Of Alexandria, Virginia, Regarding The Ramsey Homes Redevelopment Project in The City Of Alexandria, Virginia* executed July 31, 2017.

## Previous Investigations

### *Phase I Investigation Summary*

A Phase I reconnaissance survey was completed in 1991 by Alexandria Archaeology using volunteers. The survey was conducted in the hopes of recovering evidence of a Civil War barracks, quarter master's headquarters, and a sutler's house. Seven shovel test pits (STPs) were excavated within the project area as part of the initial survey, the locations of which were chosen based on the 1865 United States Office of the Quartermaster General (USQM) Map (Exhibit 4). No formal report was produced from this investigation.

While the initial investigation did not clearly identify any subsurface cultural features on the site, concentrations of mid-19<sup>th</sup>-century artifacts were recovered suggesting that some evidence of the Civil War-era occupation of the site vicinity remained. Possible features observed during the investigation included a stratum described as "mostly rocks" about 1 foot below ground surface in STP 8, an STP placed about 50 feet south of Wythe Street along the eastern edge of the current project area. Another possible feature, a hard clay surface, was noted in STP 9; located approximately 50 feet south of STP 8. The site was recorded with the DHR as Site 44FX0160, based on the presence of the collected artifacts and the locations of buildings depicted on the 1865 USQM map.

### *Phase II Evaluation Summary*

A Phase II archeological evaluation of the site was conducted in July of 2016 by Thunderbird Archaeology, a division of Wetlands Studies and Solutions, Inc. of Gainesville Virginia for Ramsey Homes, LP of Alexandria, Virginia. Fieldwork consisted of a systematic subsurface survey over the entire project area, including 40 STPs placed at 25-foot intervals around the then extant houses, and six 3-foot by 3-foot test units. Test units were placed in areas that presented with concentrations of artifacts as well of areas of interest based on the 1865 USQM map.

Shovel testing exposed one to two modern fills overlying a buried historic-period ground surface. The overlying modern or mixed fills were identified by the presence of modern or later 20<sup>th</sup>-century refuse (e.g. plastic bottle caps, aluminum foil, vinyl record fragments, etc.). The buried ground surface yielded artifacts dating to the second half of the 19<sup>th</sup> century into the early 20<sup>th</sup> century; a deposition period dating to the time between the destruction of the 19<sup>th</sup>-century structures and the construction of the public housing in 1942. Although the artifact assemblage was dominated by domestic artifacts, two likely Civil War-era military artifacts were recovered from shovel testing; one Minié ball and one General Services military button (1854-1902). The Minié ball was recovered from the buried ground surface; the General Services button was recovered from one of the mixed upper fills.

Test unit excavation recovered comparable material culture to the assemblage collected from shovel testing. The stratigraphy from the test units also closely matched the soil columns observed in the STPs. No significant historic features were encountered during the excavation of test units. The artifact assemblage collected during this investigation indicated a domestic occupation of the site starting sometime in the second quarter of the 19<sup>th</sup> century and persisting into the first quarter of the 20<sup>th</sup> century. The two military artifacts collected during the shovel testing program were the only direct evidence of a military presence at the site.

The presence of a buried ground surface that yielded historic-period artifacts across much of the site indicated that deep disturbance was likely limited to those areas in which utility trenches were observed and potentially at the locations of the public housing buildings. The apparent limited nature of disturbance suggested a strong possibility that intact subsurface features associated with the mid-19<sup>th</sup>-century domestic occupation of the site and with the Civil War-era military use of the site could be found in further investigations. The portion of Site 44AX0160 within the project site was recommended eligible for listing in the National Register of Historic Places under Criterion D due to its potential research value, as the site was assessed with a strong potential to provide otherwise unavailable information about domestic life and military history within the Parker-Gray Historic District during the second and third quarters of the 19<sup>th</sup> century. Thunderbird recommended monitoring for the demolition of the buildings onsite and archeological data recovery for the portion of Site 44AX0160 within the project area.

### **Data Recovery Field Investigation Methods**

The Phase III data recovery of the portion of the Site 44AX0160 located within the Ramsey Homes project area followed a Resource Management Plan/Treatment Plan prepared by Thunderbird Archeology in May 2017. Said plan was shared with all consulting parties and approved by Alexandria Archaeology and the DHR prior to the onset of Phase III field investigations. Demolition of the standing structures (DHR No. 100-0133-1328,0754,0747,0749,0745, and 0948) was monitored by an archeologist and completed prior to any archaeological excavation. This divergence from the initial order of operations outlined in the Resource Management Plan/Treatment Plan was approved by the DHR and Alexandria Archaeology prior to commencement of data recovery field investigations.

### *Mechanical Trenching*

After the demolition of the standing structures in the project area five (5) trenches, each measuring 50 feet by 8 feet were machine excavated through the upper fills to expose portions of the buried ground surface. Eight (8) test units were manually excavated within these trenches and excavated soils were screened through 1/4-inch hardware mesh to further sample the buried ground surface.

### *Mechanical Stripping*

Following the completion of these test units, work commenced on the mechanical stripping of the project area. Under the supervision of a monitoring archaeologist, a Gradall excavator, a track hoe excavator, and a mini-excavator were used to remove surface soils (i.e. the mixed fill strata) and the remnant buried ground surface across the entire project area, in order to expose subsoil and facilitate the location and identification of subsurface features.

### *Feature Excavation*

All potentially significant features were photographed, mapped, and excavated. Excavated soils were screened through 1/4-inch hardware mesh. If the features were found to have superior integrity the remainder of the feature was excavated, and water screened through 1/16-inch hardware mesh to collect smaller material that may have not been recoverable from 1/4-inch hardware mesh alone. Soil samples were collected from all excavated features for additional testing (e.g., floatation, chemical analysis, etc.).

All significant historic features identified at Site 44AX0160 during the Phase III investigation were fully investigated, per the approved Resource Management Plan/Treatment Plan. The location of each feature was survey located or mapped using pull tapes from survey-located points, and this data was added to a site base map (Exhibit 5). Artifact analysis of the site assemblage is ongoing.

## **Data Recovery Field Investigation Results**

A total of 42 features were observed and recorded during the data recovery and are listed below in Table 1 with preliminary functional interpretations and temporal affiliations. At least 16 of these features appear to be associated with the site's period of significance (i.e. the second and third quarters of the 19<sup>th</sup> century), seven (7) have not been assigned a temporal affiliation pending additional analysis, 16 were determined to be modern, and five were determined to be non-cultural.

Five features were identified during Phase III test unit excavation. Feature 1 was determined to be a Phase II shovel test pit (STP 8). Feature 2 was determined to be non-cultural and was assessed as bioturbation from vegetation. Feature 3 was identified as disturbances associated with a Phase II test unit from the previous archeological excavations at the site. Feature 4, an apparent linear feature initially identified within a Phase III test unit, was fully exposed during mechanical stripping. Feature 5 represents an anomalous concentration of stones observed in the wall profile of a test unit; additional subsequent investigation revealed no associated deposits and provided little information about the ephemeral feature. No features directly relating to the anomalies noted in the 1991 Phase I investigation were observed. A level of gravel fill observed in the northeastern portion of the project area could be associated with the stone layer encountered during the 1991 survey.

Direct evidence suggesting a historic building location was encountered near the northeastern corner of the project area, in association with Feature 6. The feature consisted of what appears to be a remnant pad of stone and brick rubble surrounded by a less than 1-foot wide border of oyster shell. Though artifact analysis has not been completed at this time, preliminary data indicates that Feature 6 dates to the 2<sup>nd</sup> and 3<sup>rd</sup> quarters of the 19<sup>th</sup> century. No other floors or foundations were encountered; two plow scars (Features 6-1 and 6-

2) were found beneath the cultural soils of Feature 6. Identified, likely historic, landscape features included two apparent cobble-filled drainage ditches (Feature 12 and 16) found near potential locations of Civil War-era barracks shown on the 1865 USQM map. Preliminary data suggest that these features may date to the 3<sup>rd</sup> quarter of the 19<sup>th</sup> century. A small, brick-lined drain (Feature 11) was identified near the northwestern corner of the project area. Analysis of Feature 11 is ongoing.

On the southern half of the property, where features relating to a sutler's house depicted on the 1865 USQM map were expected, a line of four post hole features (Feature 27) was encountered. Additional analysis may assist in determining if the feature is associated with the referenced building; however, excavation of Feature 27 yielded few artifacts. Features 41, 42, and 43 were recorded just to the west of Feature 27. Feature 43 appears to be historic; however, a definitive temporal affiliation is pending additional artifact analysis. Additional analysis is also needed to further interpret Features 41 and 42. An additional four post holes in an approximate square (Features 32-35) were found west of the initial four holes (Feature 27). A fifth hole (Feature 36) was noted in the center of these four post holes making a generally quincunx pattern; however, it is likely that this fifth hole is the remnants of STP 11 from the 2016 investigation. Two other probable post holes were found, one in the northeastern corner of the northernmost Ramsey Homes building (Feature 13) and one within Feature 11 (Feature 21).

As noted above, several modern features were also recorded (see Table 1); modern affiliation was ascribed to these features as they were associated either with visible modern surface features or were observed in profile cutting through the upper modern fills or the feature fills contained modern artifacts or materials.

**Table 1: Catalogue of Identified Features at Site 44AX0160 during Phase III Data Recovery**

<b>Feature</b>	<b>Initial Interpretation</b>	<b>Temporal Affiliation</b>
4	Trench	<b>Potentially Significant</b>
6	Brick and oyster floor	<b>Potentially Significant</b>
6-1	Plow scar	<b>Potentially Significant</b>
6-2	Plow scar	<b>Potentially Significant</b>
11	Brick and stone drain	<b>Potentially Significant</b>
12	Stone drain	<b>Potentially Significant</b>
13	Post hole	<b>Potentially Significant</b>
16	Stone drain	<b>Potentially Significant</b>
18	Stone drain	<b>Potentially Significant</b>
21	Post hole	<b>Potentially Significant</b>
23	Fire pit	<b>Potentially Significant</b>
32	NW post hole (western cluster)	<b>Potentially Significant</b>
33	NE post hole (western cluster)	<b>Potentially Significant</b>
34	SE post hole (western cluster)	<b>Potentially Significant</b>
35	SW post hole (western cluster)	<b>Potentially Significant</b>
43	Rectangular feature	<b>Potentially Significant</b>
5	Stone concentration	<b>Unknown Temporal Affiliation</b>
24	Charcoal lens	<b>Unknown Temporal Affiliation</b>
27	Line of four brick/stone filled post holes	<b>Unknown Temporal Affiliation</b>

**Table 1 (continued)**

<b>Feature</b>	<b>Initial Interpretation</b>	<b>Temporal Affiliation</b>
37	Small rectangular feature	<b>Unknown Temporal Affiliation</b>
40	Rectangular feature	<b>Unknown Temporal Affiliation</b>
41	Circular NW corner of building 1	<b>Unknown Temporal Affiliation</b>
42	Circular NE corner of building 1	<b>Unknown Temporal Affiliation</b>
1	STP 8	<b>Modern</b>
3	TU 202	<b>Modern</b>
7	Modern planting feature	<b>Modern</b>
8	STP 34	<b>Modern</b>
9	Modern planting feature	<b>Modern</b>
10	STP 34	<b>Modern</b>
14	Brick-lined rectangle	<b>Modern</b>
15	Modern utility	<b>Modern</b>
20	STP 31	<b>Modern</b>
22	Disturbance cutting 14	<b>Modern</b>
25	Ramsey Homes fence post hole	<b>Modern</b>
26	STP 9	<b>Modern</b>
28	Shallow ovoid feature	<b>Modern</b>
31	Modern disturbance	<b>Modern</b>
36	STP 11	<b>Modern</b>
39	Circular Feature (west of house 2)	<b>Modern</b>
2	Bioturbation (taproot)	<b>Natural</b>
17	Bioturbation	<b>Natural</b>
29	Paleochannel	<b>Natural</b>
30	Paleochannel	<b>Natural</b>
38	Circular Feature (west of house 2)	<b>Natural</b>

## Summary

The Phase III data recovery excavations at Site 44FX0160 identified at least 17 potentially significant historic cultural features that could be related to a 2<sup>nd</sup>/3<sup>rd</sup> quarter of the 19<sup>th</sup>-century occupation of the site. Preliminary impressions of artifact assemblages recovered during the Phase III investigation suggest that the stone, brick, and oyster shell feature and drainage trench features on the northern end of the site may relate to the Civil War-era military occupation of the site noted on the 1865 USQM map. Two clusters of post holes and at least one pit feature discovered on the southern end of the project area may also be related. Artifact analysis and research is ongoing.

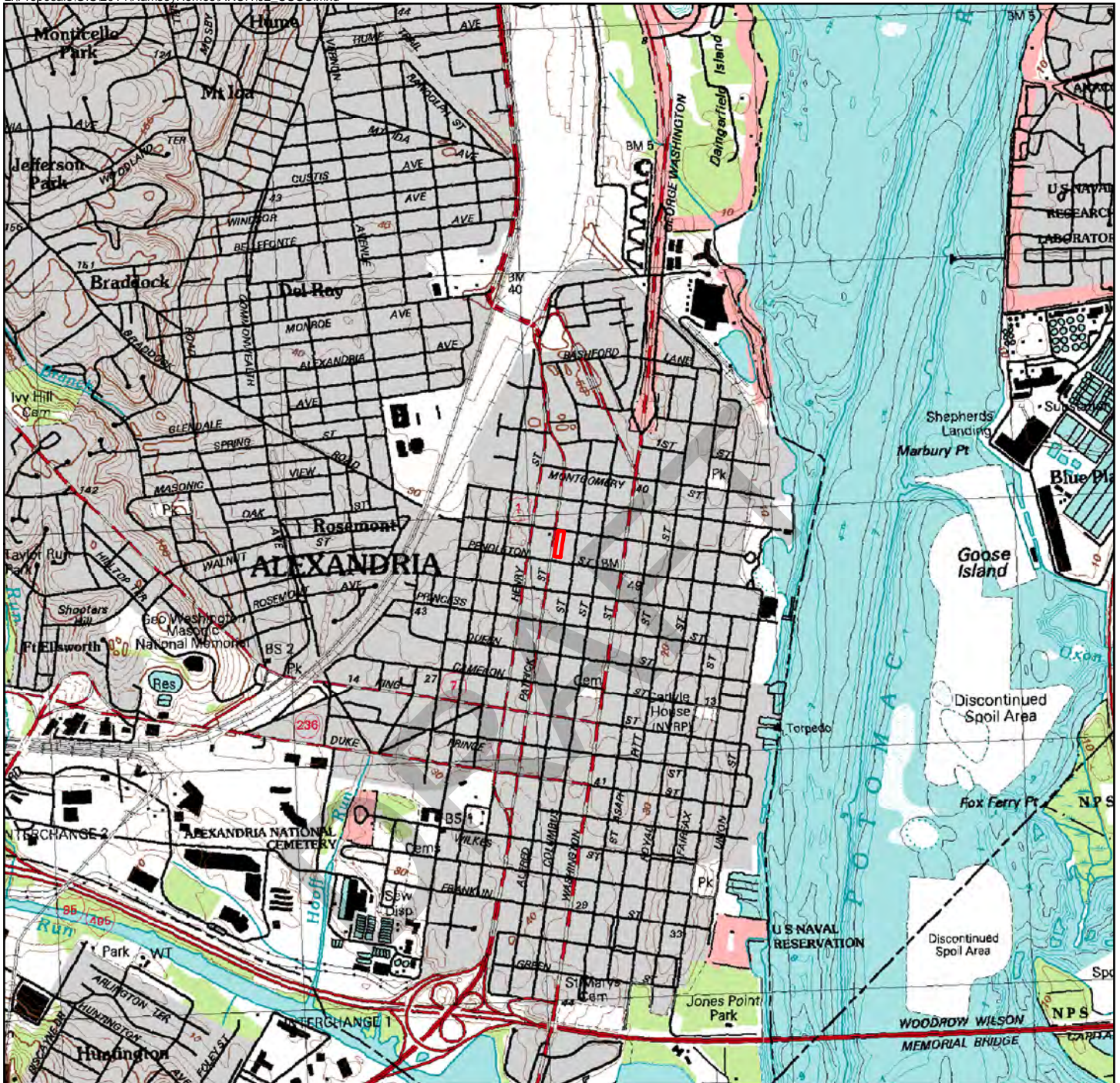
All Phase III data recovery field excavations at Site 44AX0160 are complete. All features discovered within the project area were fully investigated and mitigated in accordance with the approved Resource Management Plan/Treatment Plan. No significant historic cultural features associated with the occupation of the site are believed to remain within the project area.





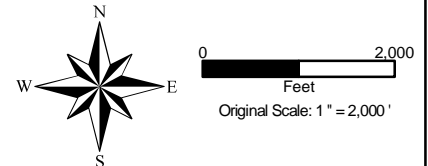
**Exhibit 1  
Vicinity Map**





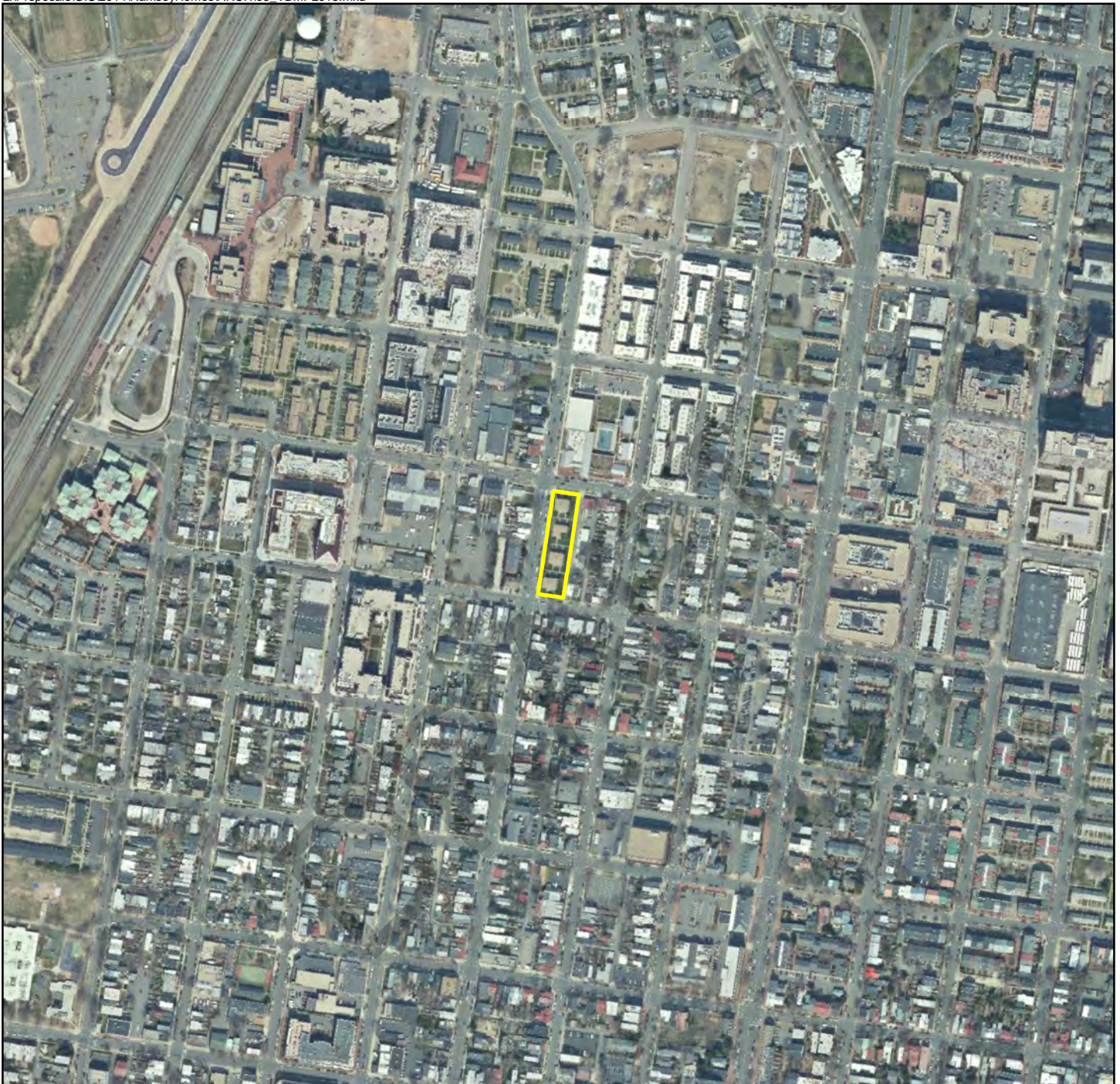
 Project Area

Latitude: 38°48'42" N  
Longitude: 77°02'55" W



**Exhibit 2**  
**USGS Quad Map**  
**Alexandria, VA-DC-MD 1994**





 Project Area

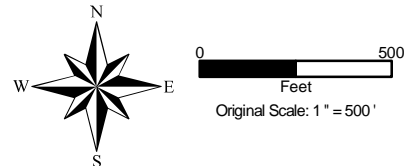
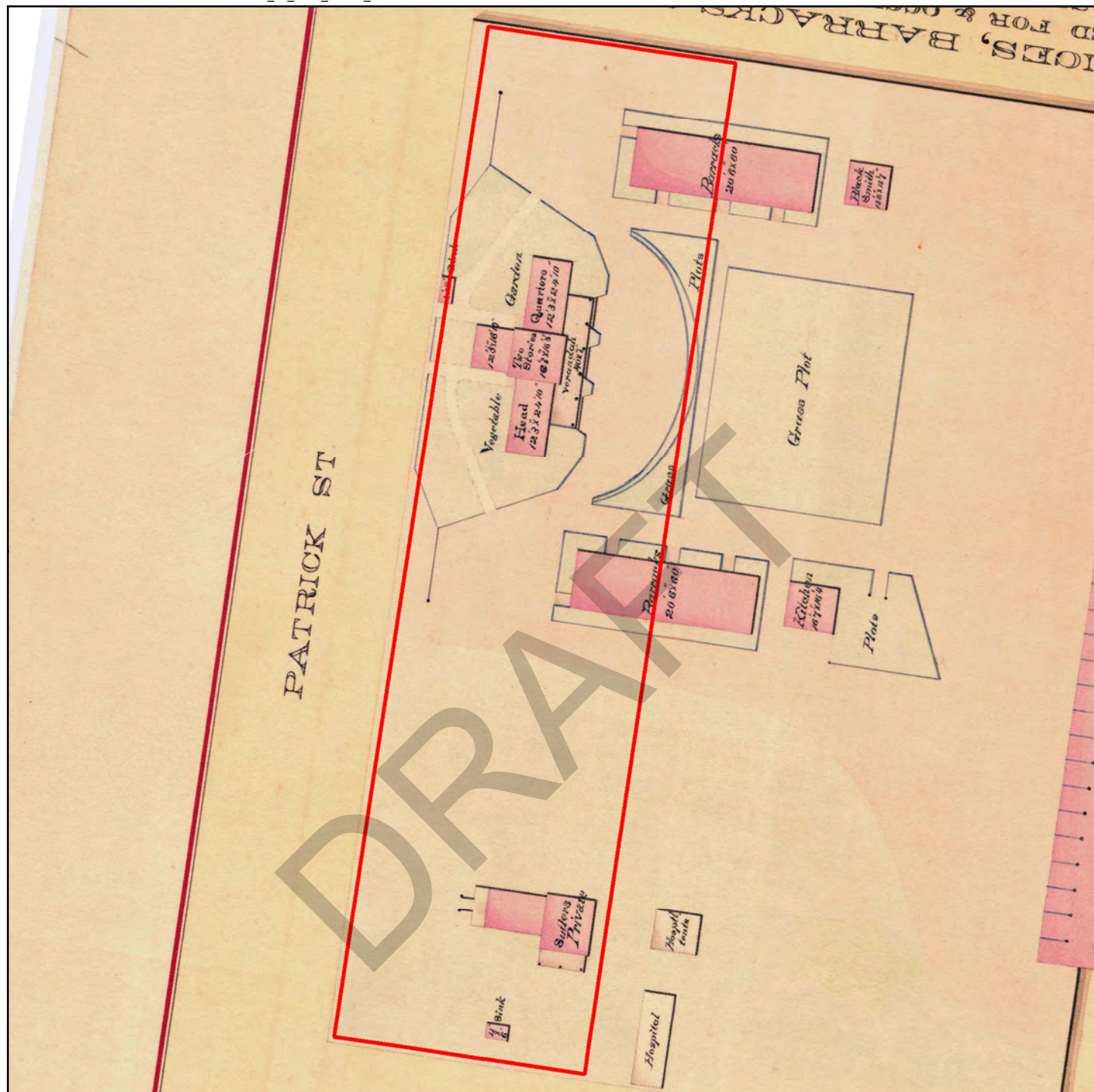



Photo Source: Wetland Studies and Solutions, Inc.

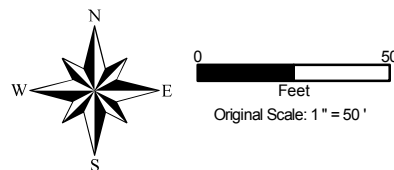
### Exhibit 3 March 2013 Natural Color Imagery



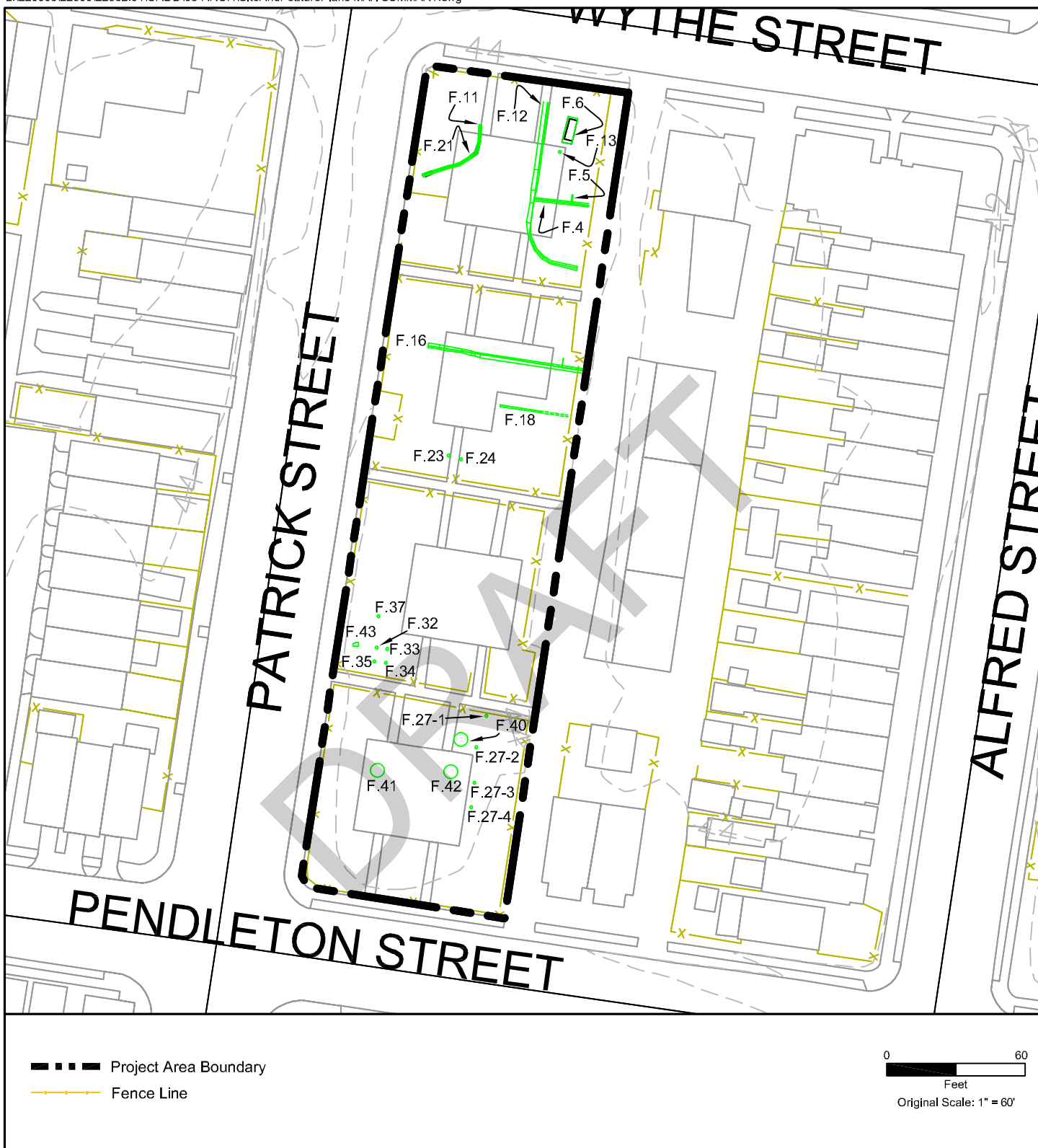


 Approximate Location  
of Study Area

Map Source: U.S. Quartermaster Corps. 1865. "Wharfs Storehouses Etc."  
Series: Post and Reservation Maps, compiled 1820 - 1905;  
Record Group 92: Records of the Office of the Quartermaster General, 1774 - 1985;  
National Archives and Records Administration (NARA).



## Exhibit 4 U.S. Quartermaster Corps Map 1865



**Exhibit 5**  
**Locations of Potentially Significant Features and**  
**Features of Unknown Temporal Affiliation**