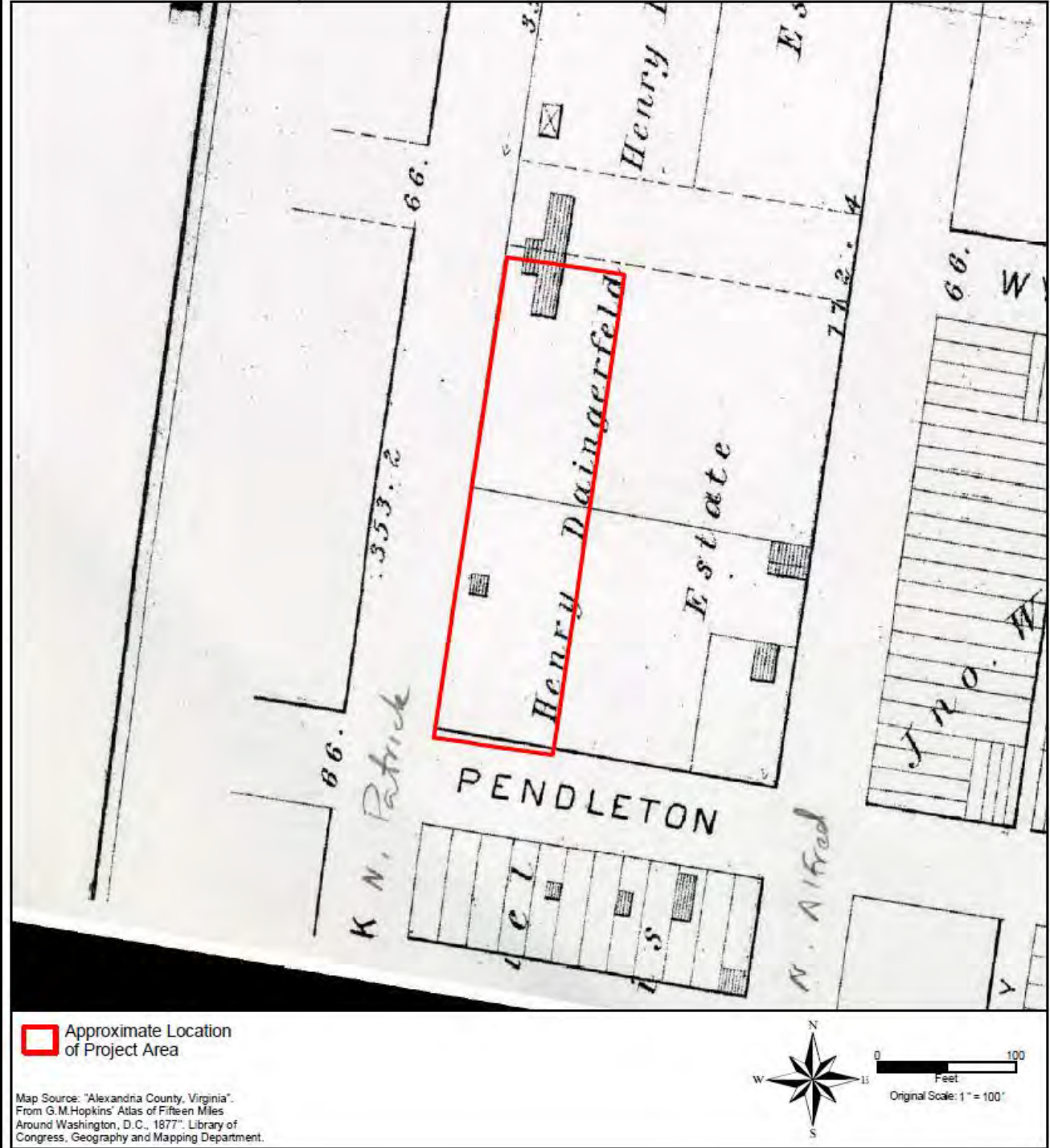


# Site History and Context

# Site History - 19<sup>th</sup>-c.

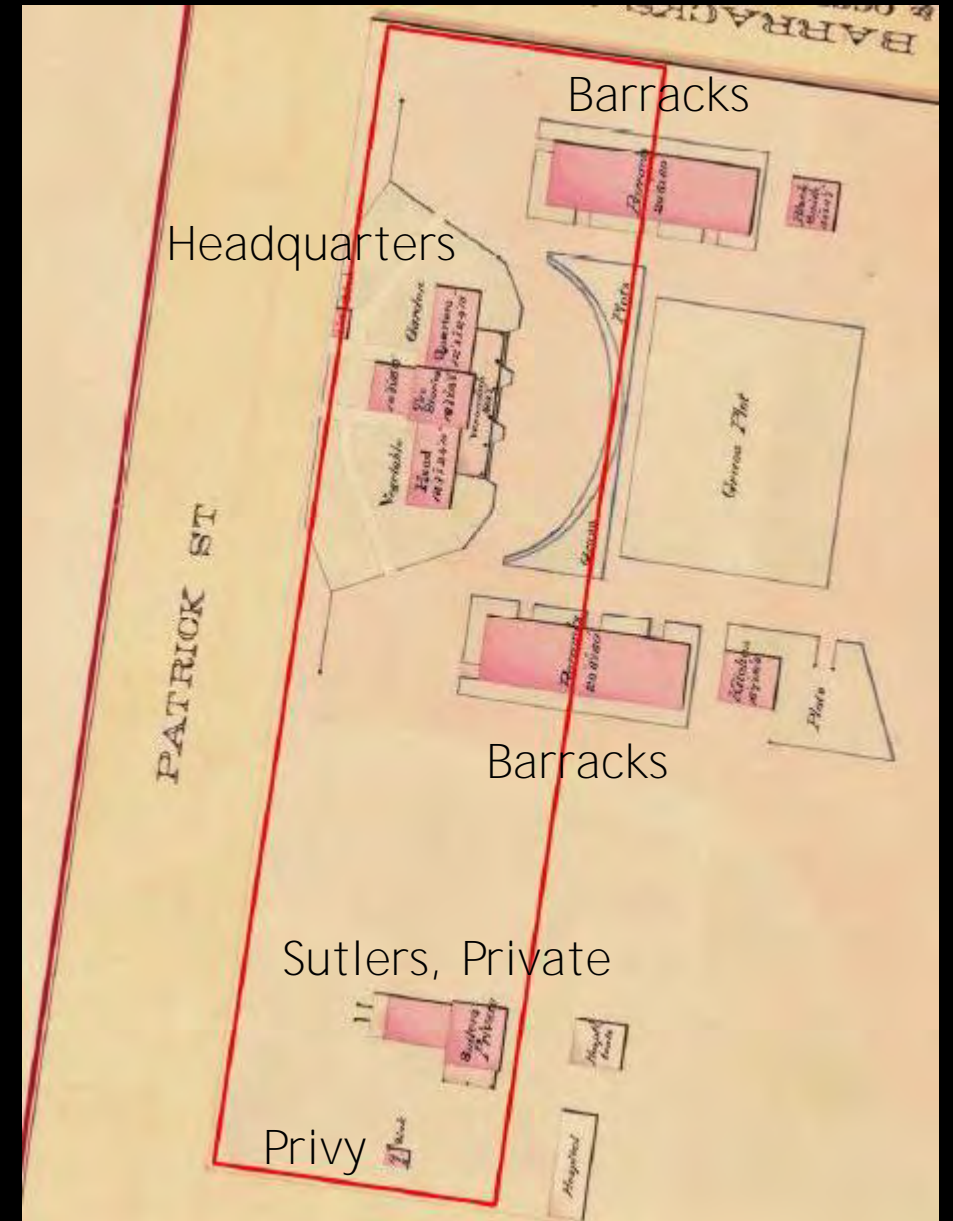
- Largely undeveloped area
- Possibly used as market garden by George Blish, 1836-1849
- **Henry Daingerfield's Estate**

1877 *G.M. Hopkins*  
Map



# Site History - Civil War

- Battery H headquarters on the US **Quarter Master's map** (Project Area in red)
- Structures include a **Sutler's** Building, a civilian merchant licensed by the US military to supply goods and services



# Archaeology

- Development plans will impact below-ground resources
- Archaeological Evaluation is completed
- Data Recovery phase to be completed prior to construction

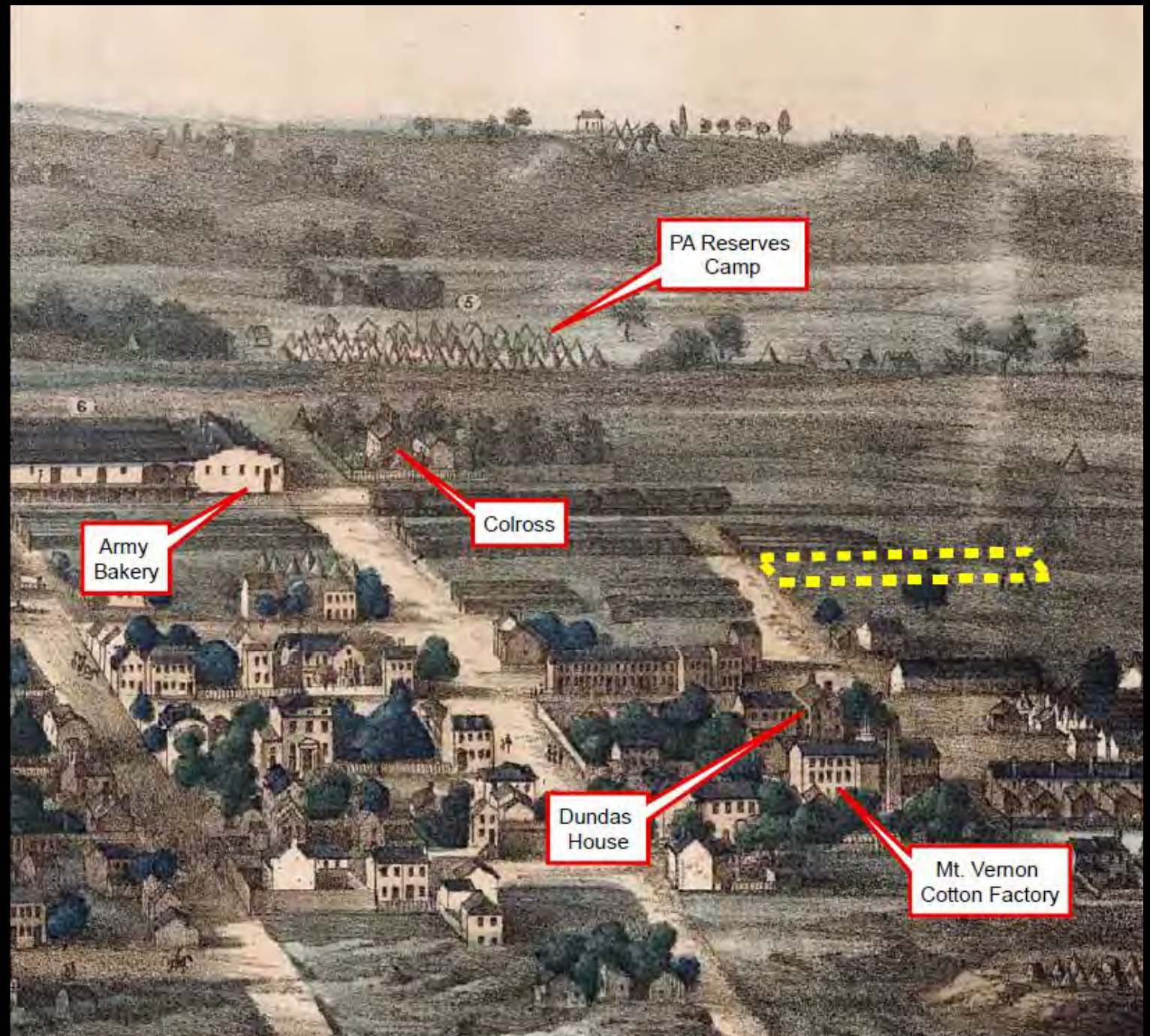
# Archaeology

- Initial testing of the site



Photos: Thunderbird Archeology

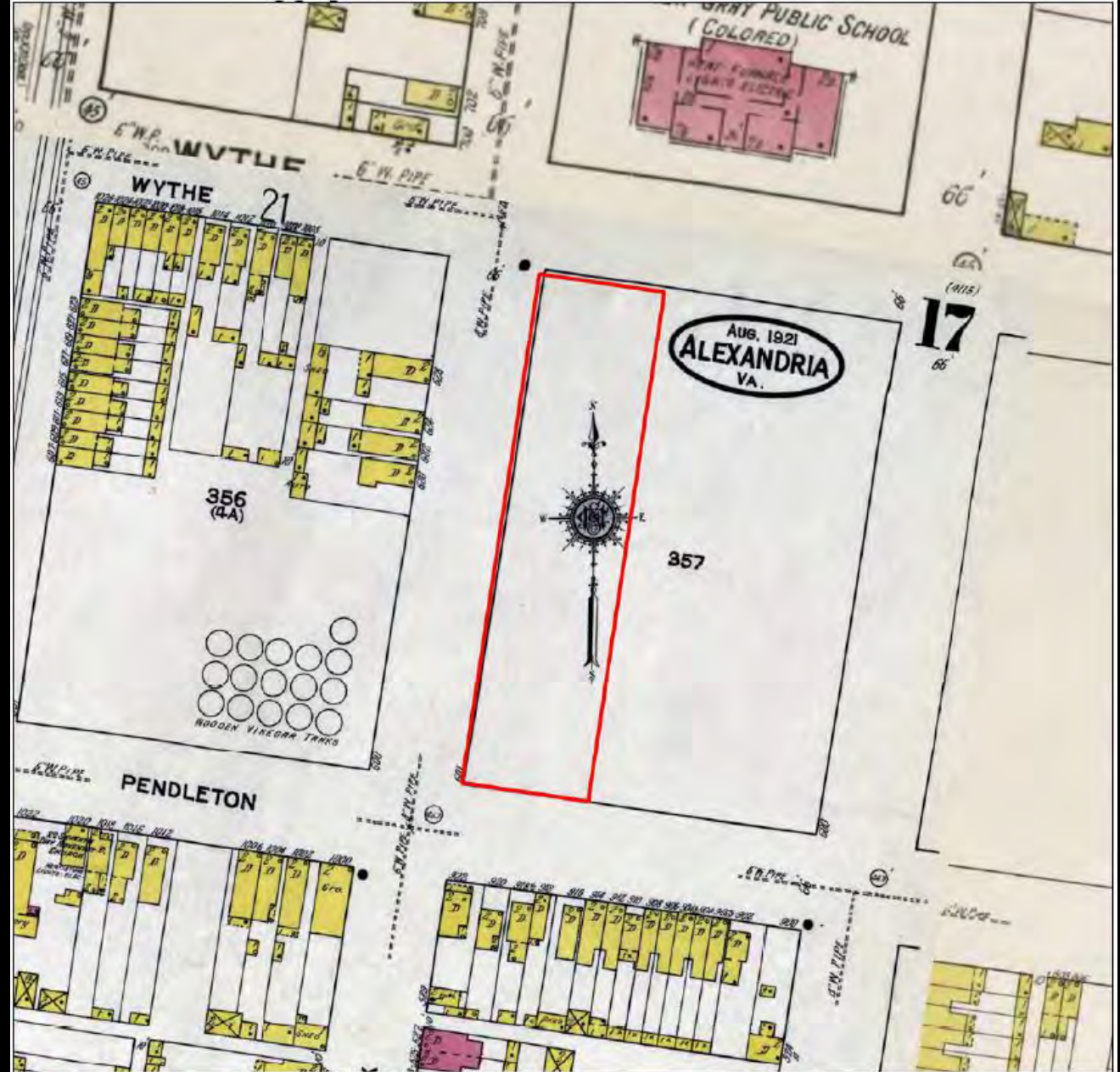
1863 *Bird's Eye*  
*View of Alexandria*  
by Charles Magnus




# Site History - 20<sup>th</sup>-c.

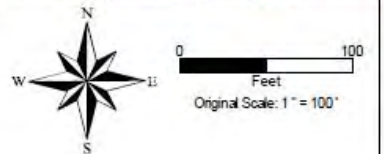
- 1941 - Land acquired by US government for defense housing
- 1941-42 - Design and Construction of Ramsey Homes (permanent war housing) for US Housing Authority
- 1953 - Federal Public Housing Authority divested many properties and Alexandria Redevelopment and Housing Authority acquired property
- 1984 - Creation of Parker-Gray District and BAR
- 2009 - Creation of Uptown/Parker-Gray National Register District

# 1921 Sanborn Fire Insurance Map



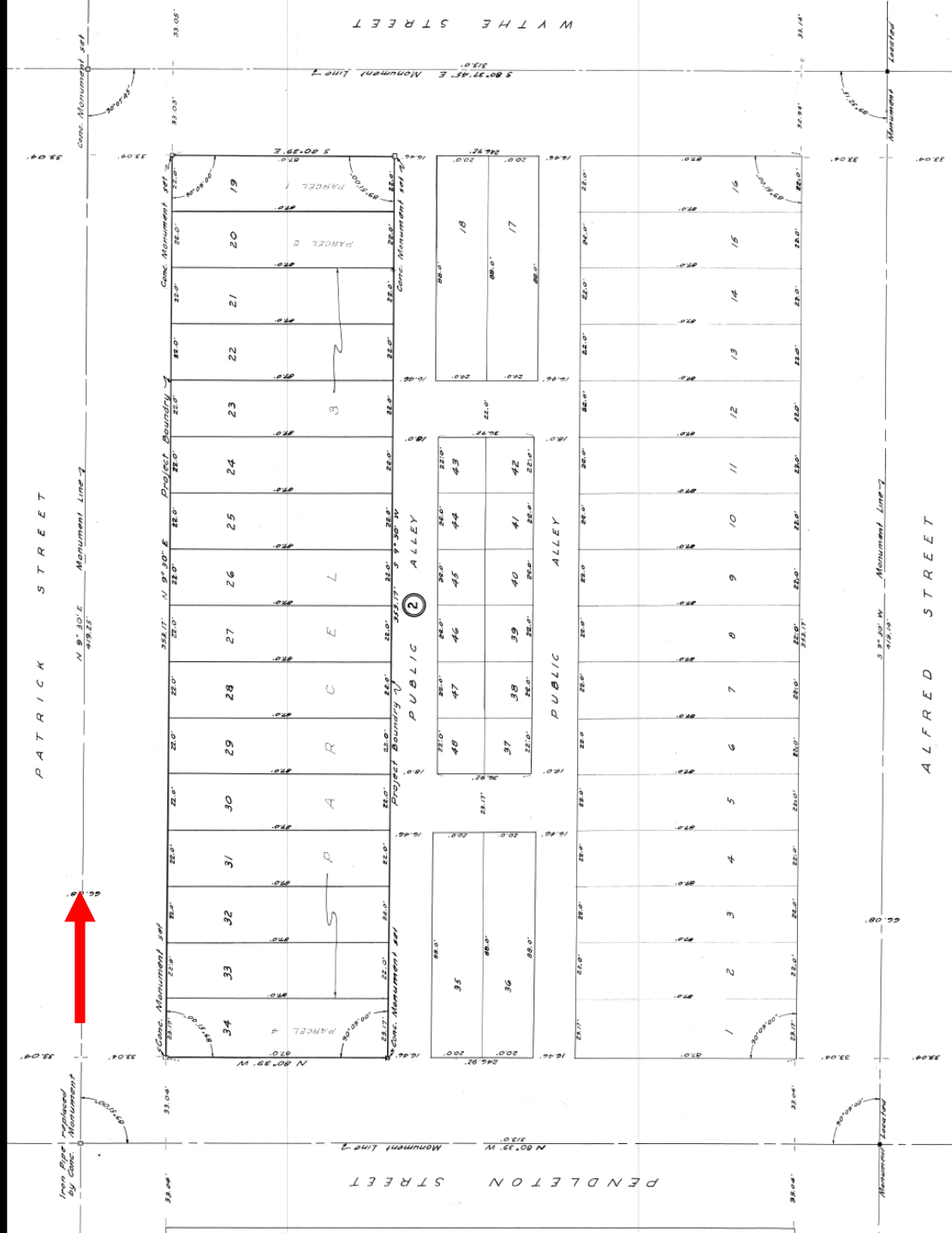
 Approximate Location of Study Area

Map Source: "Sanborn Fire Insurance Map from Alexandria, Independent Cities, Virginia." Sanborn Map Company, August 1921, Sheet 17. Library of Congress Geography and Map Division Washington, D.C.

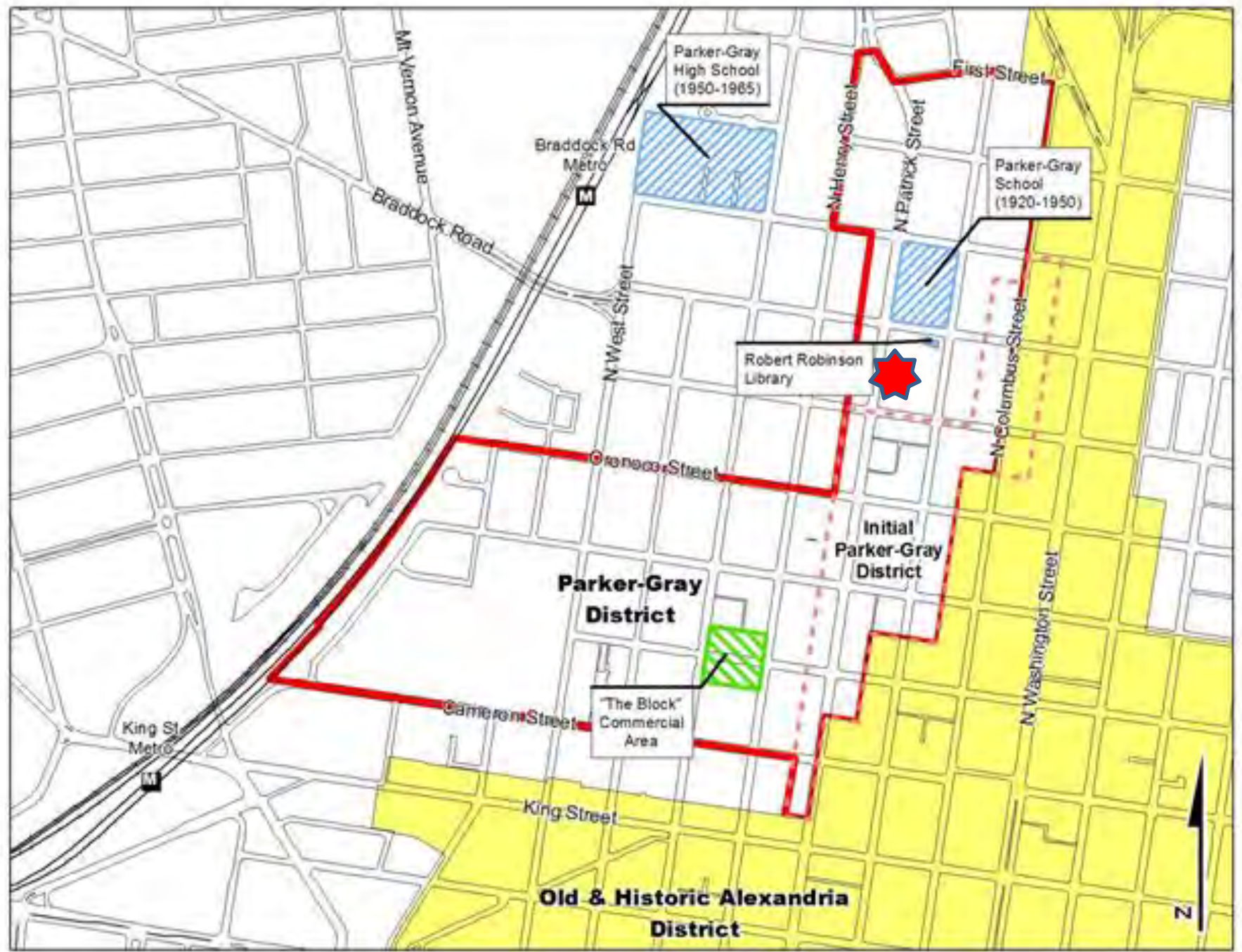




# Block Property Survey, April 16, 1941



# Context





Directly north of Ramsey Homes site on Wythe Street was the Parker-Gray School (1920-1950) which later became the Charles Houston Elementary School until desegregation. It is the current site of the Charles Houston Recreation Center. *Source: Alexandria Library Special Collections.*



North side of 800 block of Wythe Street, adjacent to Ramsey Homes, circa 1950, with the school seen in the adjacent block. *Source: Alexandria Library Special Collections.*