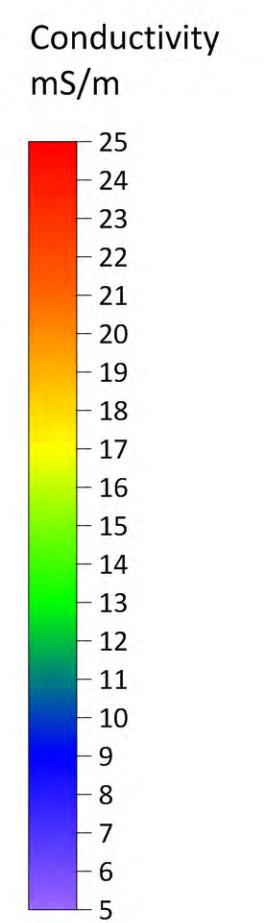
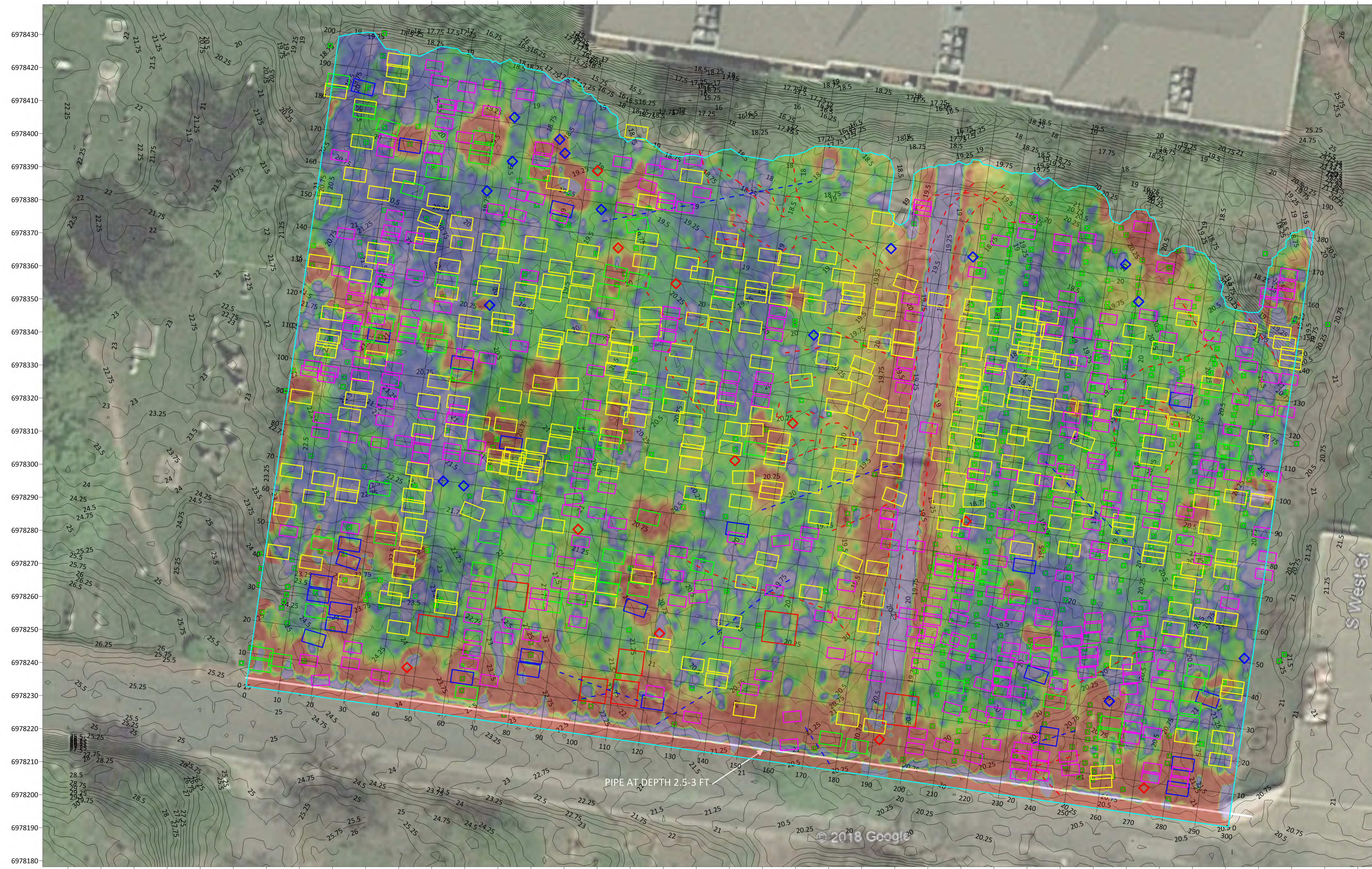


CHARTS



11894160 11894170 11894180 11894190 11894200 11894210 11894220 11894230 11894240 11894250 11894260 11894270 11894280 11894290 11894300 11894310 11894320 11894330 11894340 11894350 11894360 11894370 11894380 11894390 11894400 11894410 11894420 11894430 11894440 11894450 11894460 11894470 11894480 11894490 11894500 11894510 11894520 11894530 11894540 11894550

LEGEND	
	Grave marker
	Probable vault or intact coffin
	Well-defined grave
	Probable grave
	Probable grave, but not as large as a normal grave
	Area with concentrated multiple burials
	Limit of survey area
Features not obviously grave-related	
	Near-surficial discrete feature
	Discrete feature at depth ~1 ft
	Linear feature, near-surficial
	Linear feature at depth of ~1 ft

NOTES: The origin point 0 ft E - 0 ft N is located at a point at the inner curb of Wilkes Street 3 feet east along the curb from where the iron fence forming the western border of the cemetery projects to the curb.

Site topography was derived from Lidar data obtained from Virginia Information Technologies Agency (VITA). Contour interval 0.25 ft. The background image is from Google Earth image from April 30, 2018

Map prepared by
 Nadia E. Johnson RPA and William J. Johnson PG
 Rhea Engineers and Consultants, Inc.
 950 N Washington St
 Alexandria, VA 22314

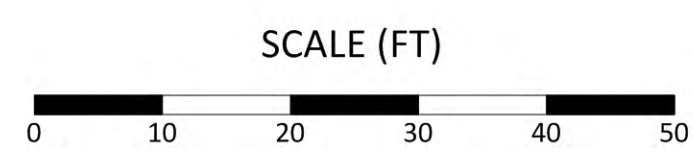


CHART 1
 INTERPRETIVE MAP FROM GEOPHYSICAL SURVEY
 DOUGLASS MEMORIAL CEMETERY
 ALEXANDRIA, VIRGINIA
 PREPARED FOR
 ALEXANDRIA ARCHAEOLOGY
 ALEXANDRIA, VIRGINIA



LEGEND				
	Probable vault or intact coffin	Surface features		Pronounced depression
	Well-defined grave			Depression
	Probable grave			Broad depression
	Area with concentrated multiple burials			Rectangular area with hummocky ground
	External limit of survey area			Grave marker

NOTES: The site grid was established on the basis of distance West and distance North. The origin of the site grid (0 ft N - 0 ft W) is the inner edge of the curb along South Payne Street opposite the utility pole in the SE corner of the survey area where the pole is located at 0 ft N - 6.5 ft W on the site grid and the N-S axis is the South Payne Street curb.

Site topography was derived from Lidar data obtained from Virginia Information Technologies Agency (VITA). Contour interval 0.5 ft. The background image is from Google Earth image from April 30, 2018. Gray shaded areas within survey area represent dense vegetation where surveying was not practical.

Map prepared by
 Nadia E. Johnson RPA and William J. Johnson PG
 Rhea Engineers and Consultants, Inc.
 950 N Washington St
 Alexandria, VA 22314

CHART 2
 INTERPRETIVE MAP FROM GEOPHYSICAL SURVEY
 PENNY HILL CEMETERY
 ALEXANDRIA, VIRGINIA

PREPARED FOR
 ALEXANDRIA ARCHAEOLOGY
 ALEXANDRIA, VIRGINIA

