



POTOMAC YARD METRORAIL STATION

Community Meeting
April 18, 2016





AGENDA

- I. Background
- II. Temporary Construction Impacts
- III. Environmental Site Management
- IV. City Standard Construction Procedures
- V. Potential Mitigation Efforts
- VI. Upcoming Meetings
- VII. Comments/Questions



BACKGROUND

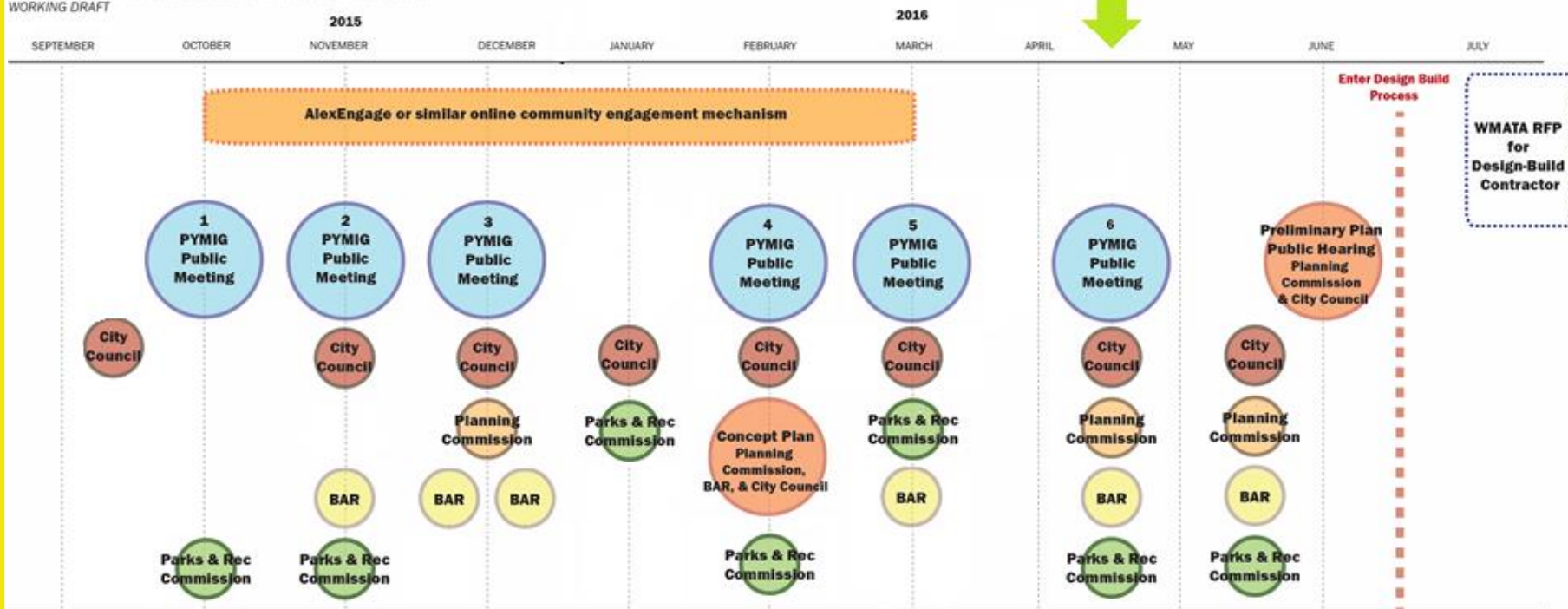


PREFERRED ALTERNATIVE

- Draft EIS was circulated for public review and comment in Spring 2015
- City Council adopted the Locally Preferred Alternative (LPA) “B” on May 20, 2015
- EIS is being finalized
- The EIS process will wrap up with Records of Decision by the Federal Transit Administration and the National Park Service this summer

DESIGN PROCESS TIMELINE

POTOMAC YARD METRORAIL STATION PROCESS FRAMEWORK
WORKING DRAFT



WORKING DRAFT

Note: This framework is a working draft and is subject to change

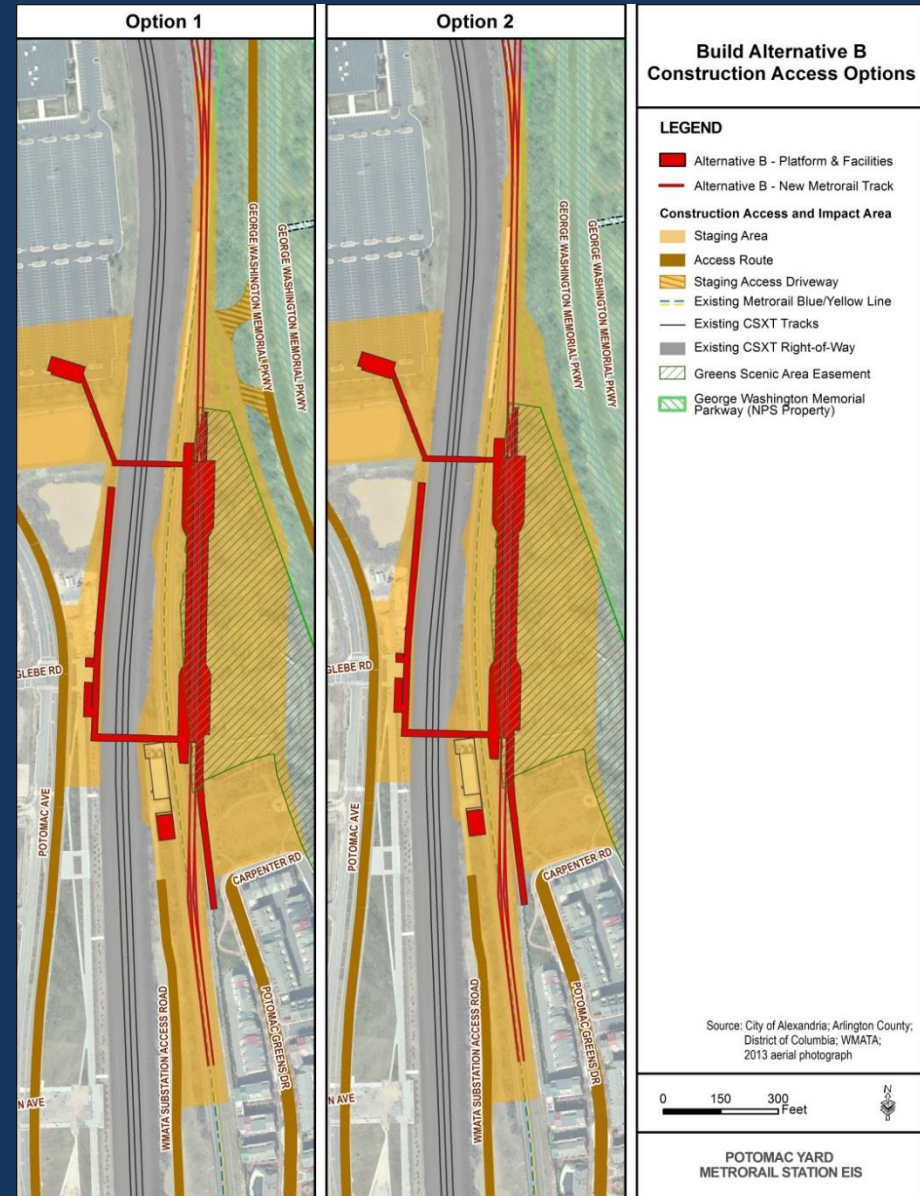
- Forecasted D/B contract award: Spring 2017
- Forecasted station opening: Spring 2020



TEMPORARY CONSTRUCTION IMPACTS

CONSTRUCTION ACCESS

- Construction Access Options *studied* for the EIS:
 - Access from George Washington Memorial Parkway
 - Access through Old Town Greens and Potomac Greens
 - Use of cranes from the west side of the CSX right-of-way
- NPS prohibits construction access from the GWMP and will not allow the use of the parkway by construction traffic.
- No construction over active railroad tracks.
- All construction traffic will use Route 1.



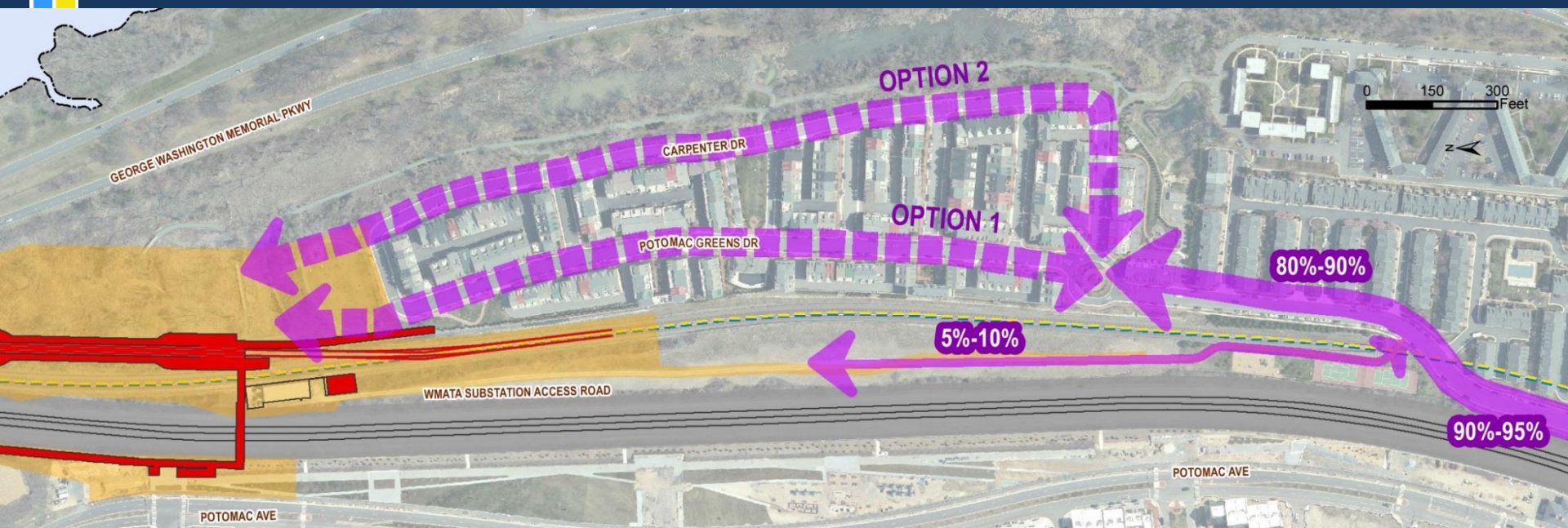
CONSTRUCTION ACCESS

- The following graphics are approximations of the breakdown by route of the amount of anticipated construction traffic.
- To reduce traffic to and from the station site, a location is being sought for construction worker parking.
- This off-site parking would be required for all construction workers, who would be bused to the site.



CONSTRUCTION ACCESS

- Construction traffic traveling north on Potomac Greens Drive has 2 options once it reaches the traffic circle at the intersection of Potomac Greens Drive and Carpenter Road: Potomac Greens Drive or Carpenter Road.
- Community input is being sought on the selection of the preferred option.
- The landscaped area of the traffic circle will be removed before construction and restored at the end of construction.
- The 2 playgrounds will be relocated and the tennis courts will be closed throughout the period of construction.

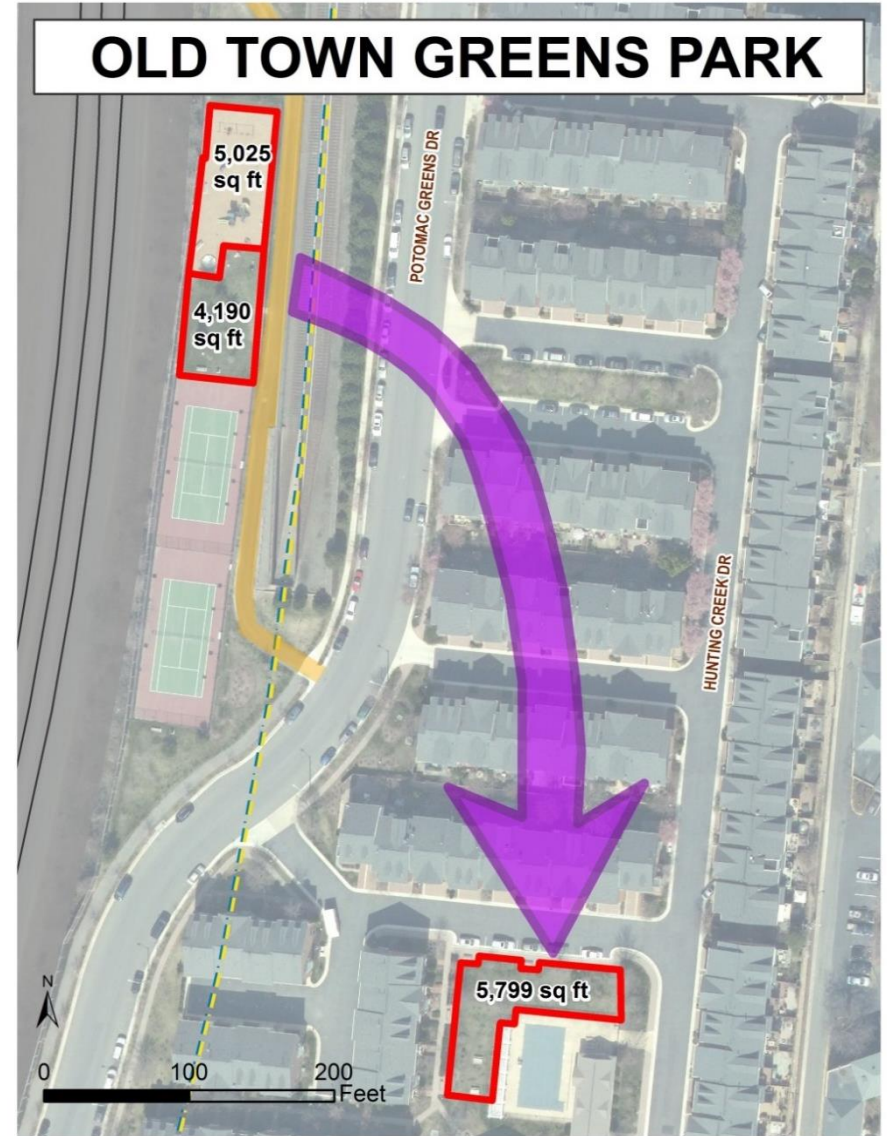


TEMPORARY PARK RELOCATION

POTOMAC GREENS PARK



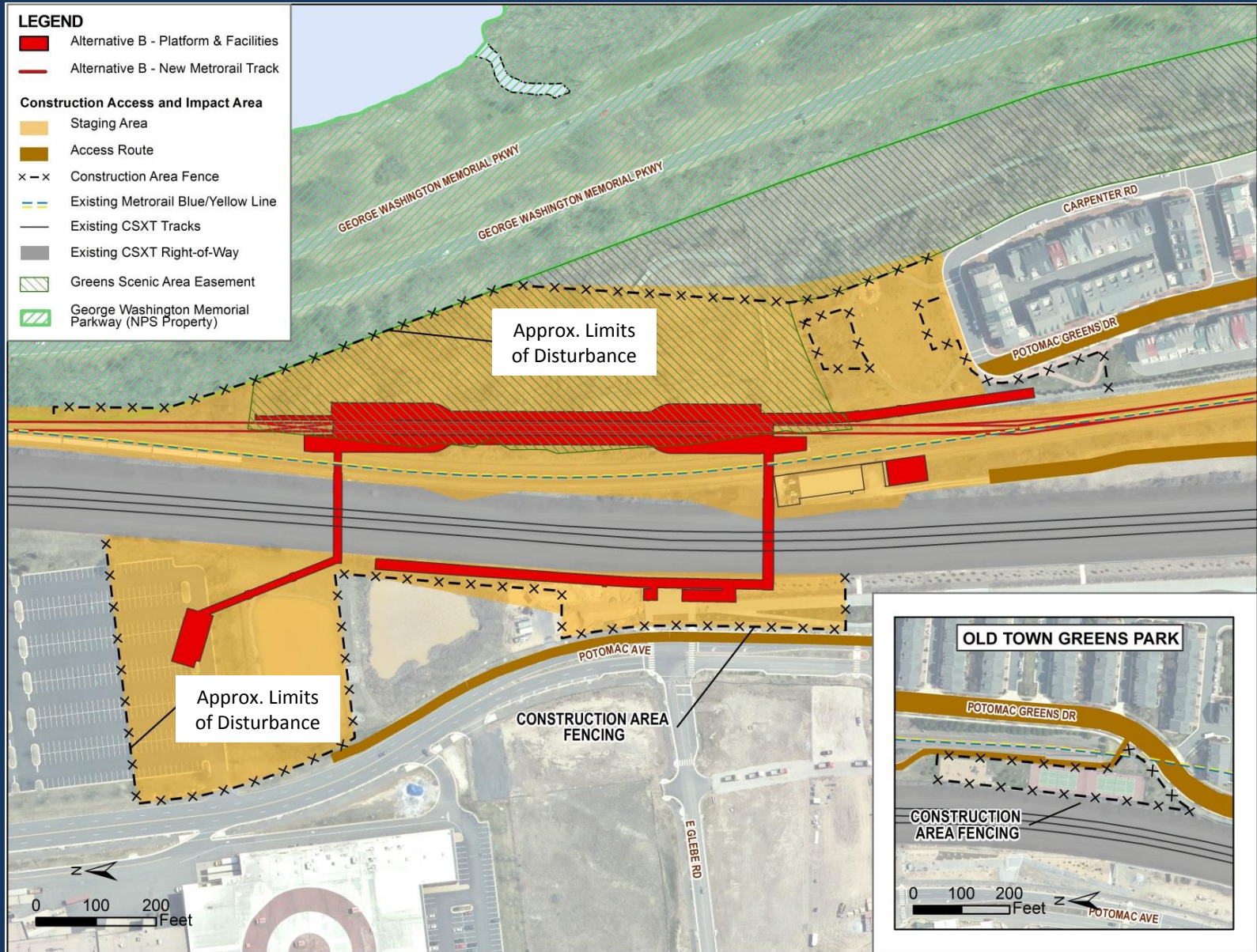
OLD TOWN GREENS PARK



CONSTRUCTION IMPACTS

- Overnight and weekend work will be required.
- Additionally, some work will require that Blue & Yellow Line service be suspended during weekends.
- The construction schedule will be determined once the contractor is determined.

APPROXIMATE LIMITS OF DISTURBANCE



ENVIRONMENTAL SITE MANAGEMENT

- Environmental contamination based on past uses has been identified
- All soil removed from the site will be characterized and disposed properly
- Committed to maintaining a safe site
- Continue to review the matter with CoA, DEQ, FTA, and NPS to ensure appropriate management of the site

CITY STANDARD CONSTRUCTION PROCEDURES

- Construction permits are required for the project
- Off-site parking for construction workers
- Hauling Permits and Specific Hauling Routes
- Dust Control Plan
- Special permit requirements for “off” hour work
- Hours of Operation
 - Monday – Friday: 7:00am to 6:00pm
 - Saturday – 9:00am to 6:00pm
 - Sunday – no work
- Pile Driving Hours
 - Monday – Friday: 9:00am to 6:00pm
 - Saturday – 10:00am to 4:00pm
 - Sunday – no pile driving

POTENTIAL MITIGATION EFFORTS

- Communication
- Pre-construction assessment of homes
- Noise mitigation
- Full Time Presence
 - Controlled access to site
 - Monitoring of haul routes and permits
- Safety Manager
- Construction Staging

UPCOMING MEETINGS

- Next Community Meeting
 - May 11, 2016 (6:30 - 8:30 p.m., Durant Center)
- Open Houses
 - May 17, 2016 (6:00 - 8:00 p.m., Charles Houston)
 - June 2, 2016 (6:30 - 8:30 p.m., Charles Houston)
- Potomac Yard Metrorail Implementation Work Group (PYMIG)
 - April 25, 2016 (6:30 - 8:30 p.m., Charles Houston)
 - May 23, 2016 (6:30 - 8:30 p.m., Charles Houston)
- Del Ray Farmers Market
- Four Mile Run Farmers Market
- Updates to Civic Associations
- Updates to Boards and Commissions
- Planning Commission public hearing: June 2016
- City Council public hearing: June 2016



- Additional Info:

- Jason Kacamburas, P.E., CCM - Project Coordinator
 - 703-746-4049 (office)
 - Jason.Kacamburas@AlexandriaVA.gov
- eNews Sign up, select Potomac Yard Metro Station updates:
 - www.Alexandriava.gov/enews
- For more project information, visit:
 - www.alexandriava.gov/PotomacYard

Questions?

STATION CONTEXT & CITY APPROVALS

