

POTOMAC YARD METRORAIL STATION PROJECT

Potomac Yard Metrorail Implementation Work Group
October 25, 2021





AGENDA

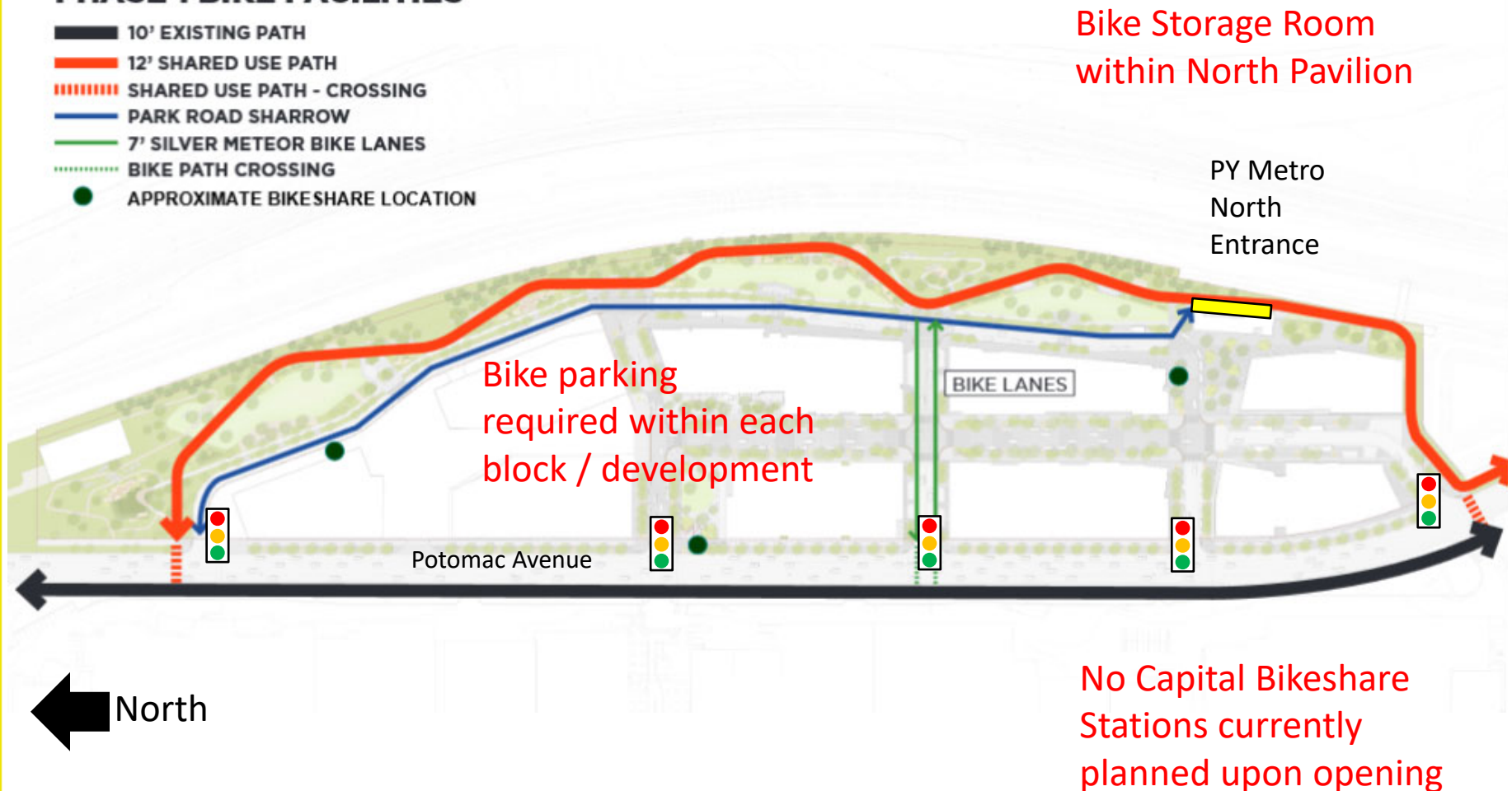
- Pedestrian, Bicycle, and Transit Facilities- T&ES
- PYC Construction Update
- Construction Look Ahead Schedule
- Upcoming Meetings



LONG TERM NON-MOTORIZED IMPROVEMENTS

PHASE 1 BIKE FACILITIES (Potomac Yard Redevelopment)

- 10' EXISTING PATH
- 12' SHARED USE PATH
- SHARED USE PATH - CROSSING
- PARK ROAD SHARROW
- 7' SILVER METEOR BIKE LANES
- BIKE PATH CROSSING
- APPROXIMATE BIKESHARE LOCATION



NON-MOTORIZED IMPROVEMENTS

SW ACCESS PEDESTRIAN / BICYCLE CONFLICT

- Heard concerns about pedestrian and bicycle conflicts at the crossing at E Glebe at the Metro Station
- Met with National Industries for the Blind (NIB) to discuss their concerns and potential solutions
- City to install improvements installed prior to Metro station Opening
- After opening, City to monitor / examine need for further improvements



E Glebe Road at Potomac Avenue – Looking East

Location of
South Pavilion





Potomac Avenue at E Glebe Road – Looking North



Location of
South Pavilion





Existing Conditions

- Long crossing distances
- Conflicts with turning vehicles
- Conflicts between pedestrians and bicyclists in the crosswalk
- Vehicles speed on Potomac Avenue
- Site distance issue / red light running on SB Potomac Avenue

Potential Future Conditions:

- Metro-related traffic increases conflicts between people walking, biking, and driving



○ NON-MOTORIZED IMPROVEMENTS

SW ACCESS PEDESTRIAN / BICYCLE CONFLICT

PRIOR TO PY METRO OPENING

- Complete improvements including signage, striping, and adding a new pedestrian signal button for the existing pedestrian signal behind the trail
- Improvements will be installed by the City in coordination with construction





CONCEPTS TO BE COORDINATED WITH PY METRO

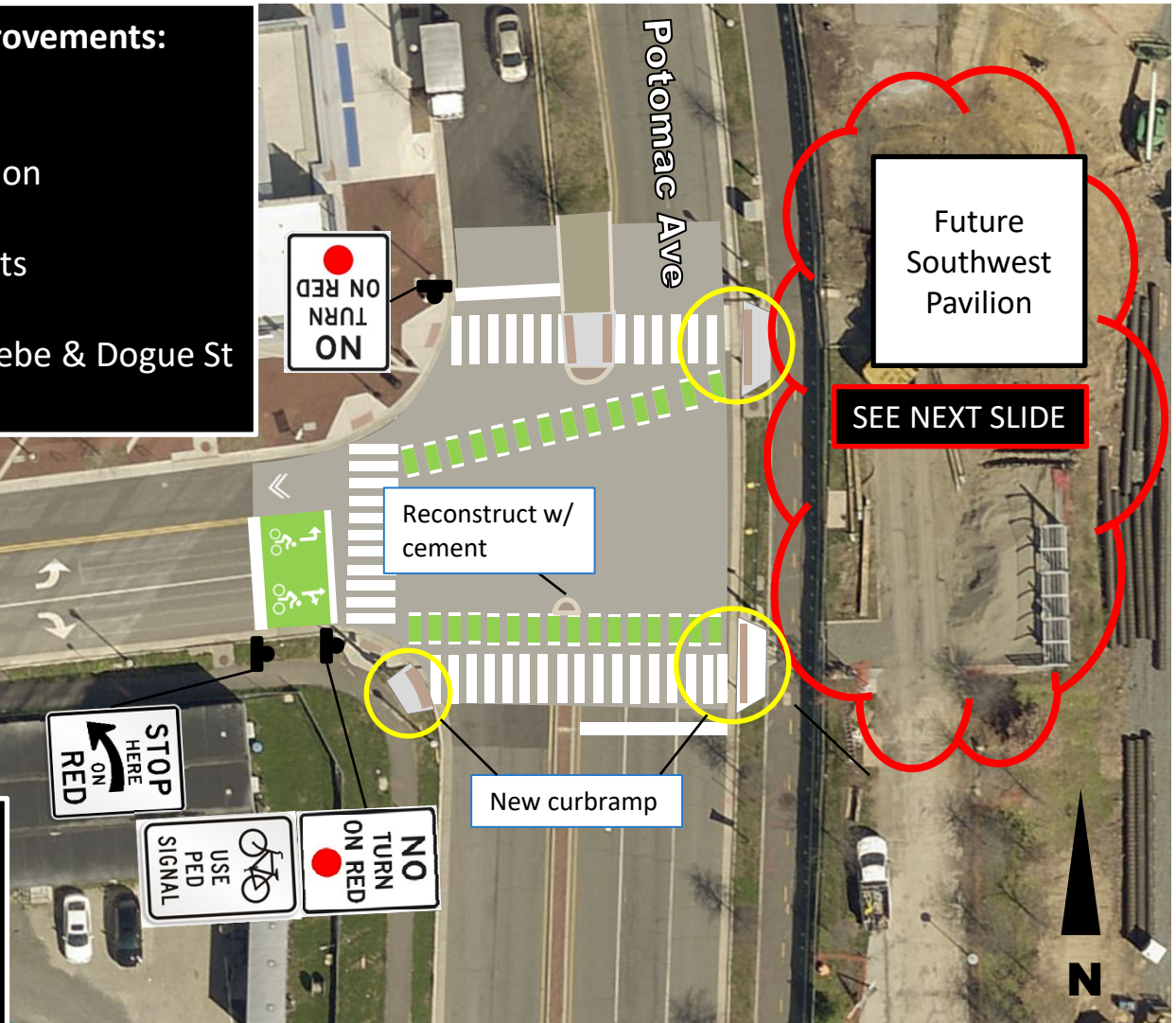
Potomac Ave & Glebe Rd Proposed Improvements: Pictured:

- Bike box
- Bike guide markings through intersection
- Extended median on north side
- Examine potential crosswalk treatments
- No Turn on Red restrictions
- Rectangular Rapid Flash Beacons at Glebe & Dogue St
- Widened curb ramps



Not Pictured:

- Audible (voice) countdown signals
- Bicycle detection (in bike box)
- Exclusive pedestrian (and bike) signal phases
- Speed radar signs N. of intersection





NON-MOTORIZED IMPROVEMENTS

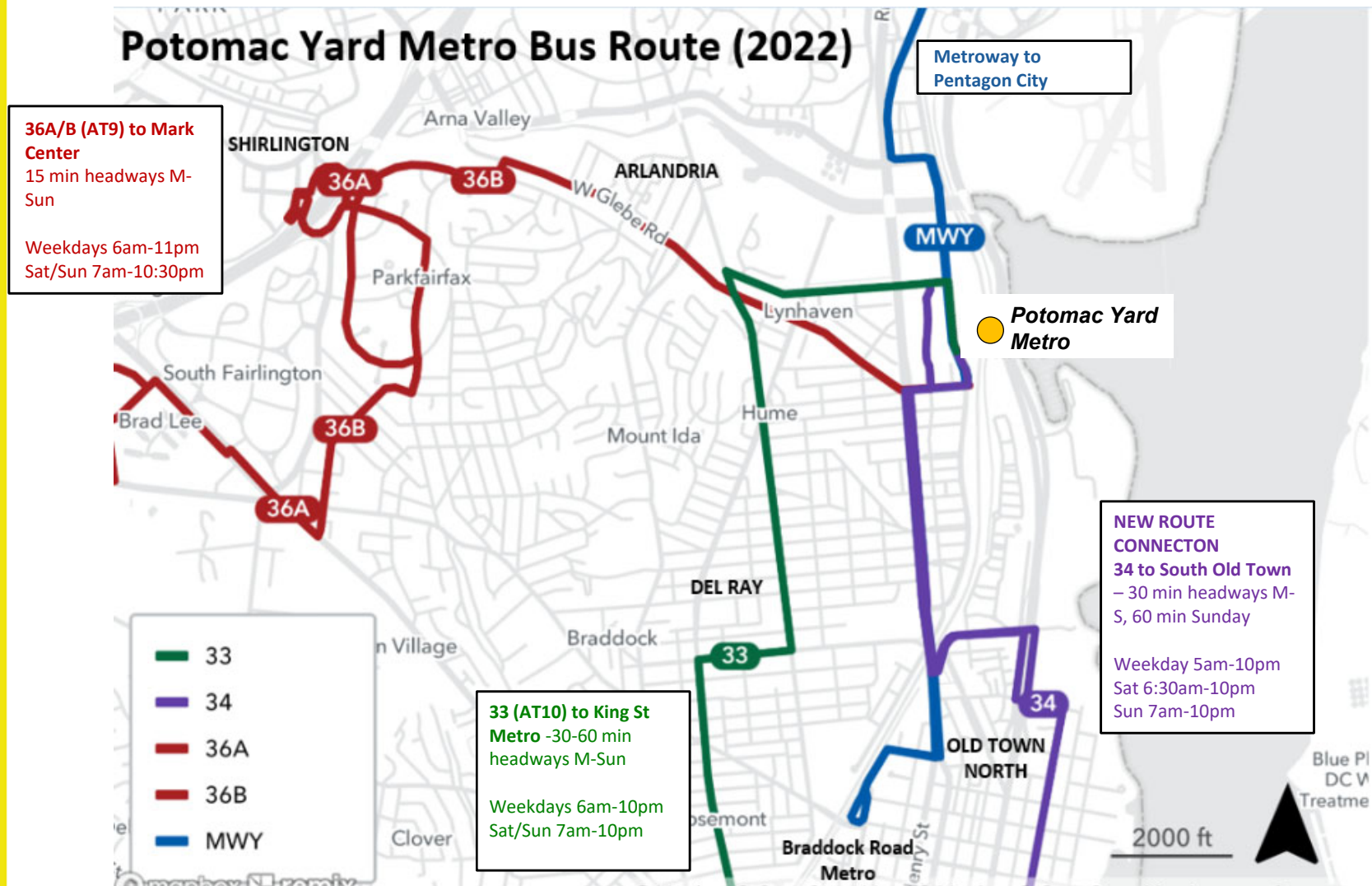
SW ACCESS PEDESTRIAN / BICYCLE CONFLICT

OBSERVE AND ADJUST

- After Metro station opening, after a period of normalization, observe and study conditions for the trail and pedestrian access and crossing
- Staff to determine if additional engineering improvements are warranted (e.g. striping or signage on the trail, signal work, etc.)

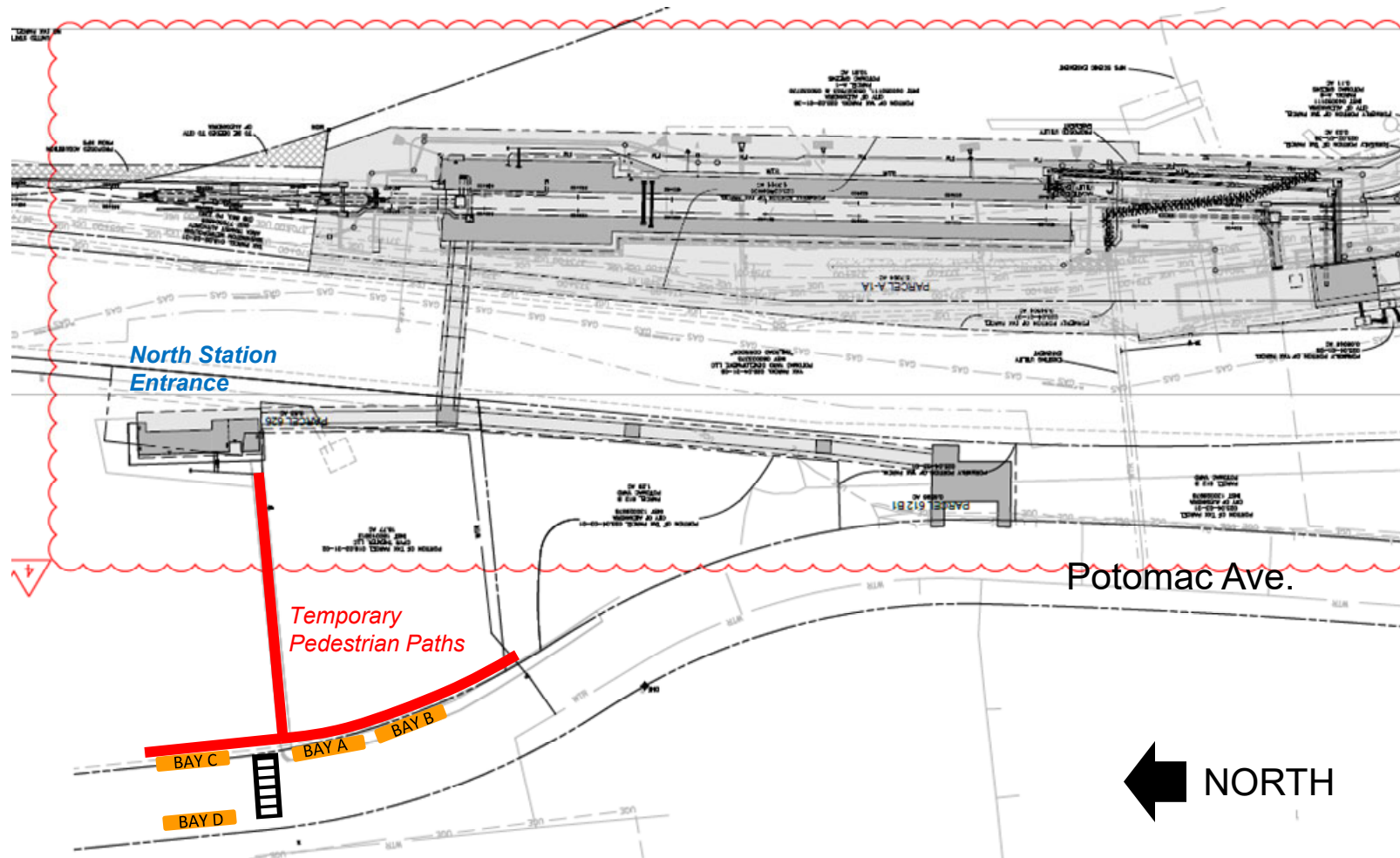


TRANSIT IMPROVEMENTS

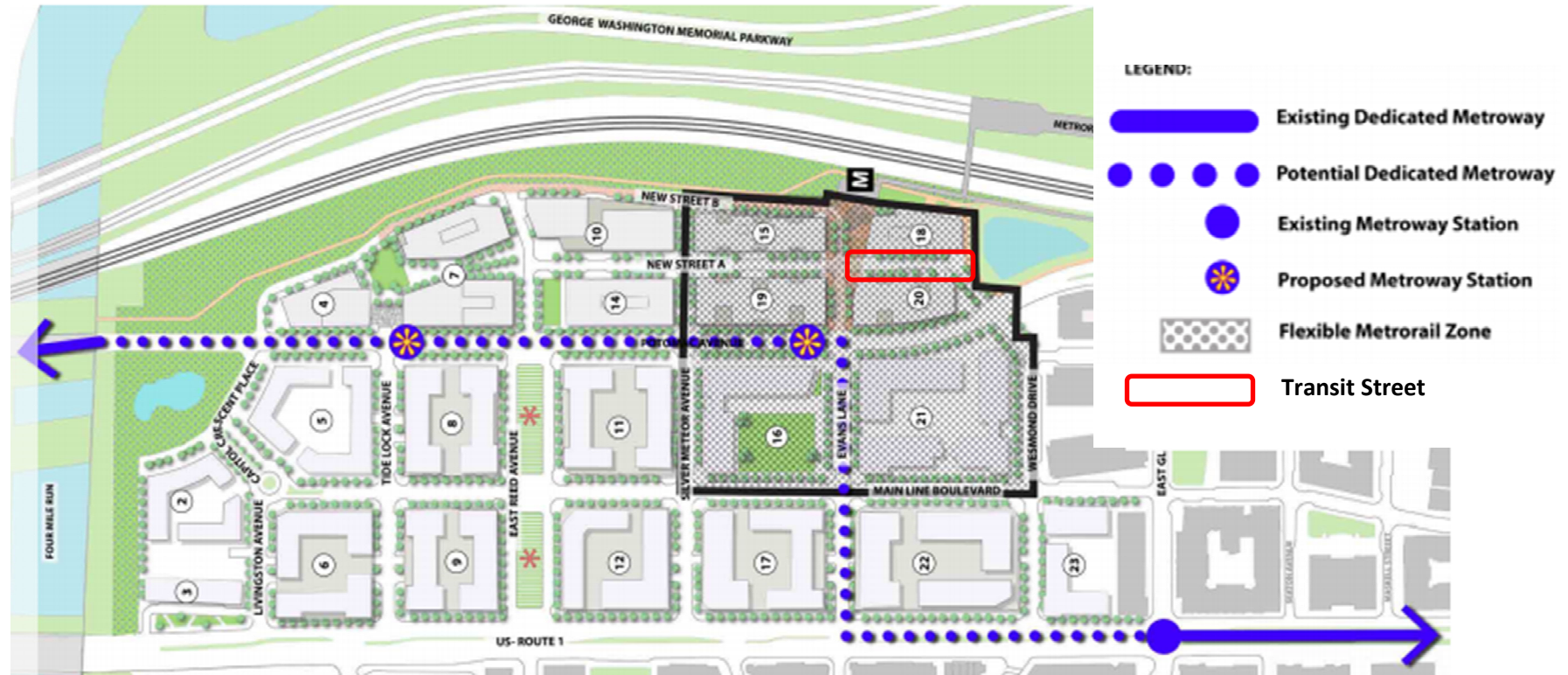


NEAR TERM TRANSIT CONNECTIONS

BUS ZONE ON POTOMAC AVENUE

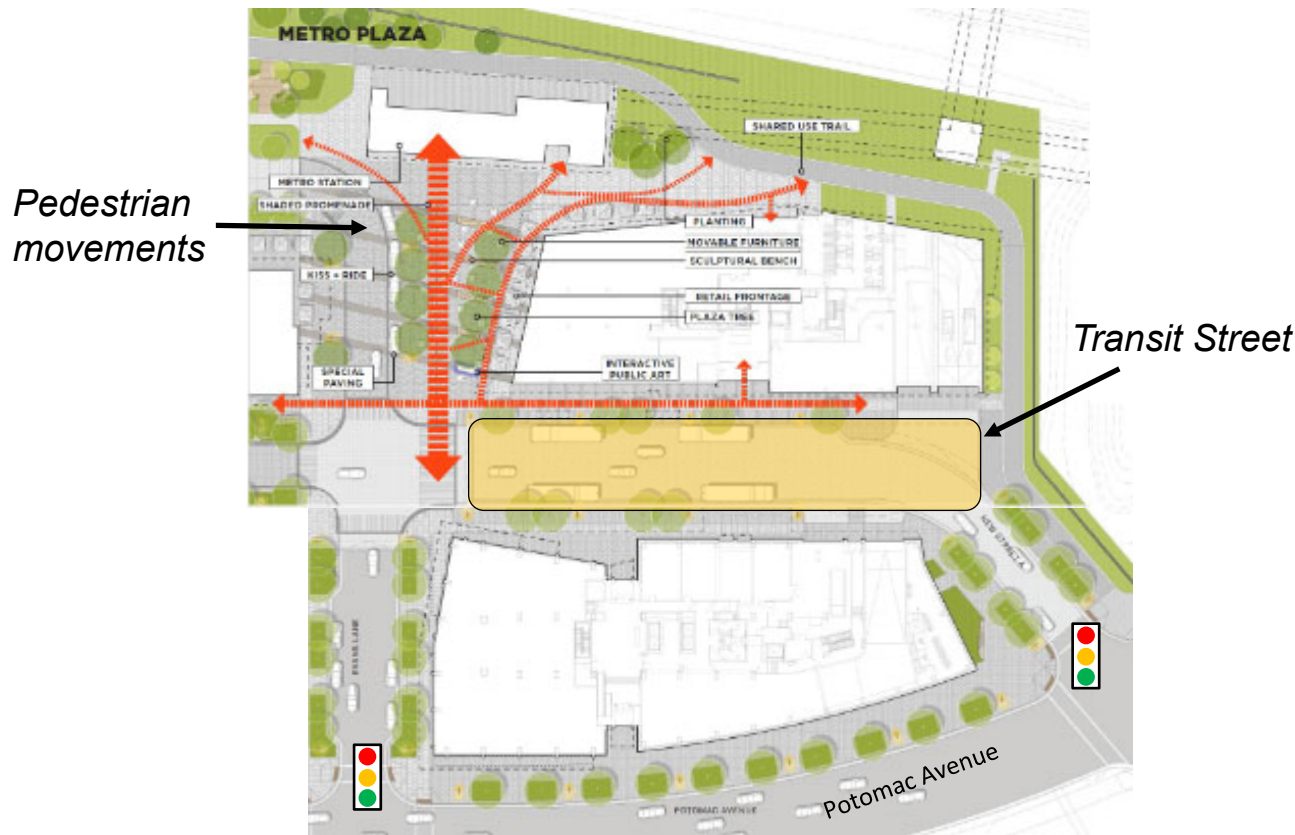


LONG TERM TRANSIT CONNECTIONS



LONG TERM TRANSIT CONNECTIONS

TRANSIT STREET



AC SWITCHGEAR - ELECTRICAL EQUIPMENT



DUCT BANK - SOUTH END OF STATION



SOUTH END- GRADING FOR EGRESS RAMP



STATION - EAST SIDE EXOSKELETON



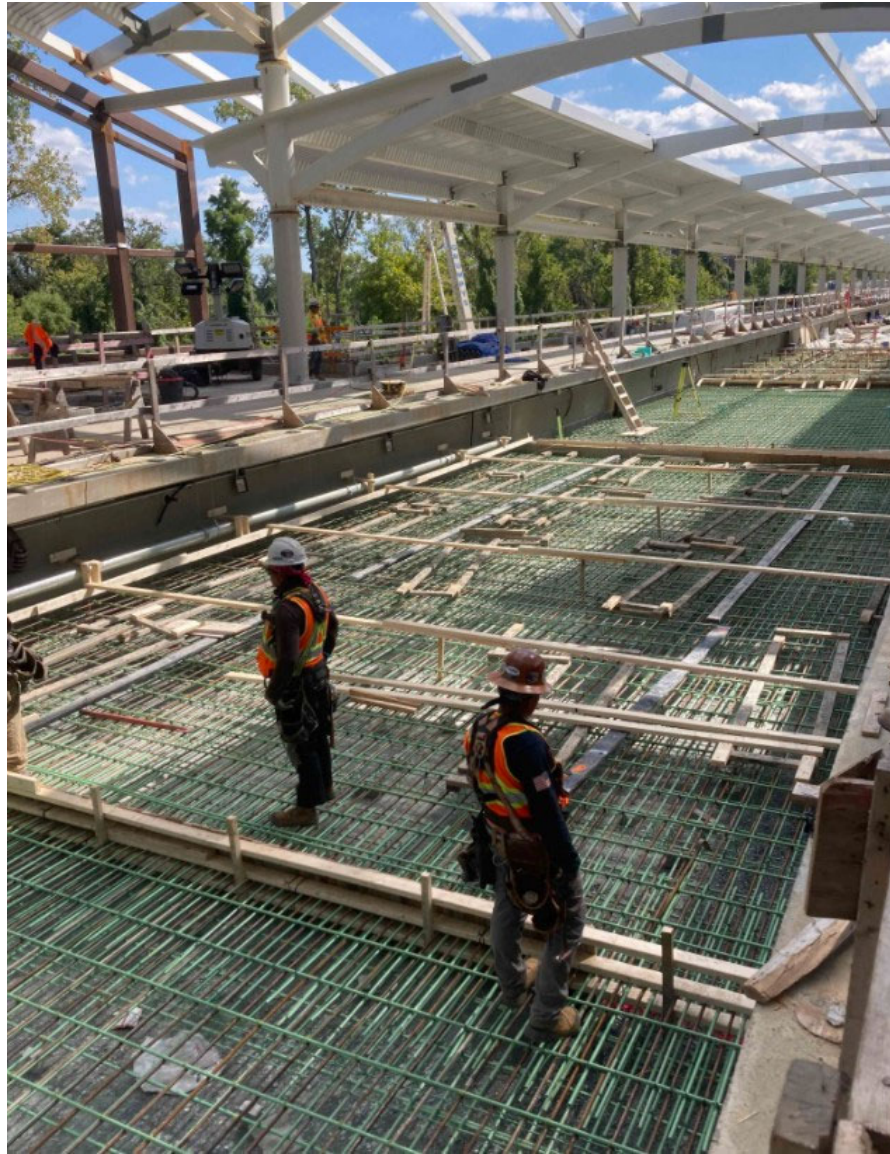
STATION - EAST SIDE EXOSKELETON



EAST PLATFORM - LOOKING NORTH



DIRECT FIXATION SLAB - REBAR



DIRECT FIXATION SLAB - CONCRETE POUR



DIRECT FIXATION SLAB - LOOKING SOUTH



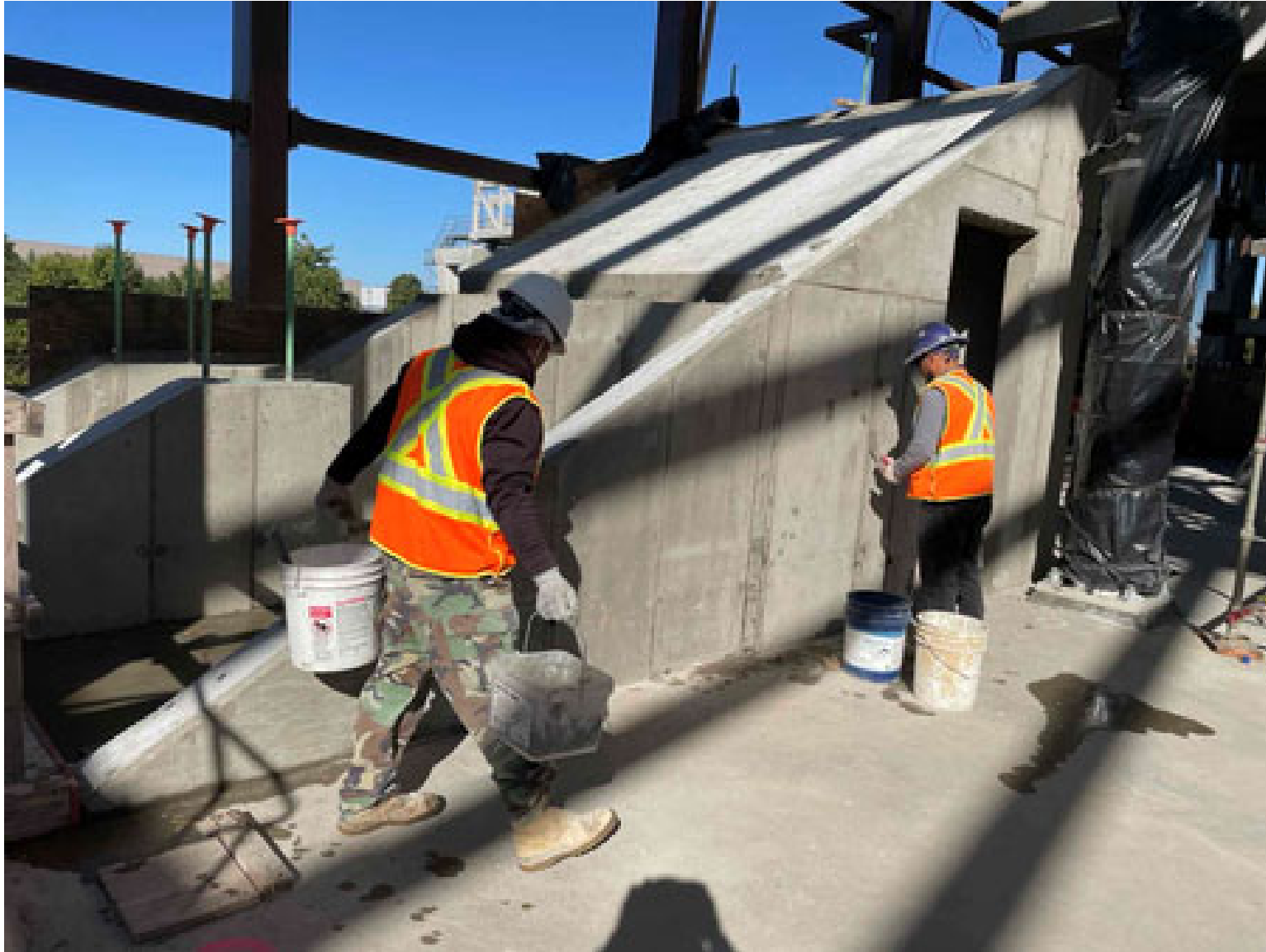
NORTH END - DIRECT FIXATION SLAB REBAR INSTALLATION



REBAR INSTALLATION FOR THE CROSS OVER



○ PLATFORM LEVEL WEST ESCALATOR WALLS



○ CONDUIT INSTALLATION-SERVICE LEVEL



PEDESTRIAN BRIDGE - DECKING



PEDESTRIAN BRIDGE



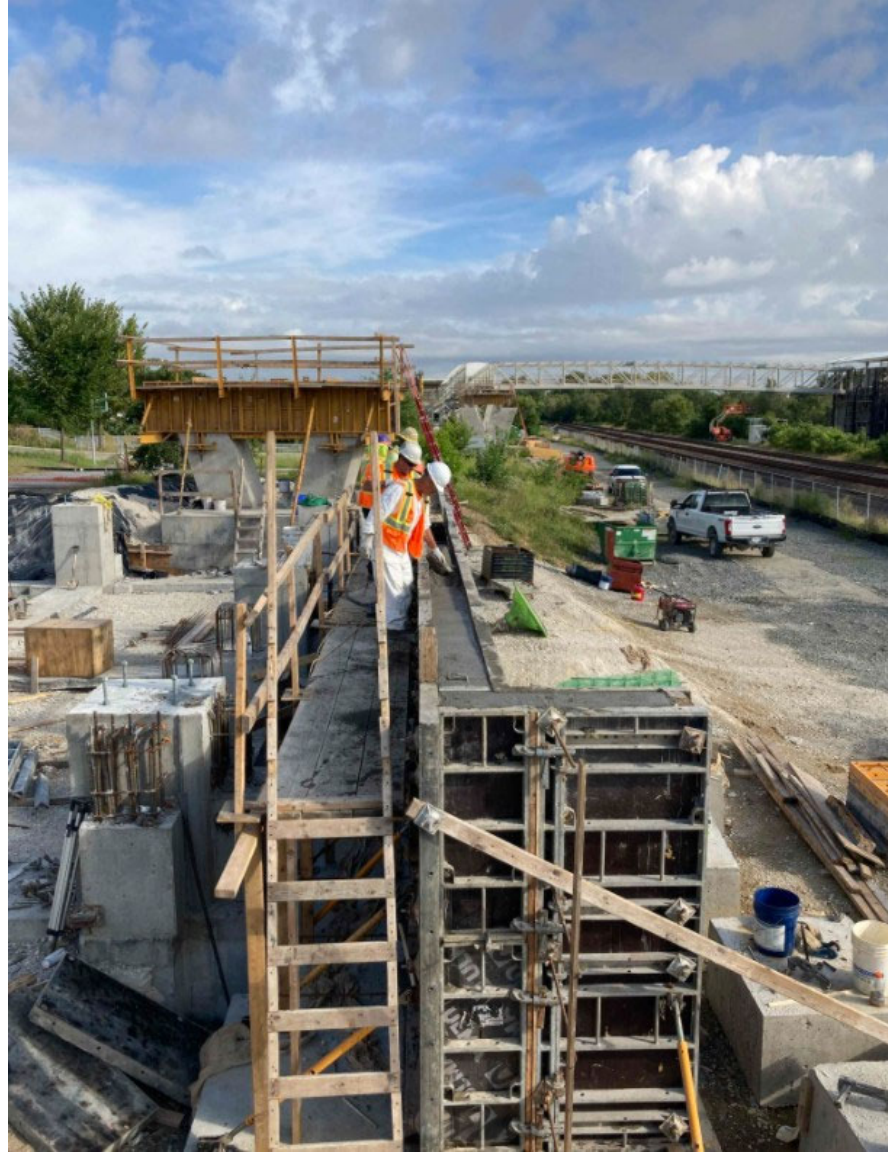
NORTH PAVILION



NORTH PAVILION - PAINTING



○ SOUTH PAVILION -WALL



OVERALL STATION VIEW



OVERALL STATION VIEW





CONSTRUCTION LOOK AHEAD SCHEDULE

ACTIVITY	2021			2022	
	OCT	NOV	DEC	JAN	FEB
AC SWITCHGEAR BUILDING - INSTALL ELECTRICAL EQUIPMENT					
PLACE FILL FOR STATION					
INSTALL ROOF/GLASS/STONE/FINISHES AT STATION					
INSTALL ELECTRICAL/MECHANICAL/PLUMBING					
PEDESTRAIN BRIDGES - DECK AND ROOF					
RETAINING WALL					
SW ENTRANCE - PIERS/PAVILION FOUNDATION					
ERECT STRUCTURAL STEEL - S. PAVILION/BRIDGE					



UPCOMING PYMIG MEETINGS

- Standing Meetings: 4th Monday of each month
- Upcoming Dates:
 - November 22 - Meeting
 - December - Post Construction Update



Thank You

Submit questions and feedback
to Daphne Kott

Daphne.Kott@alexandriava.gov

703.746.4055

