

hord | coplan | macht



Seminary Overlook- Phase I

Home Properties

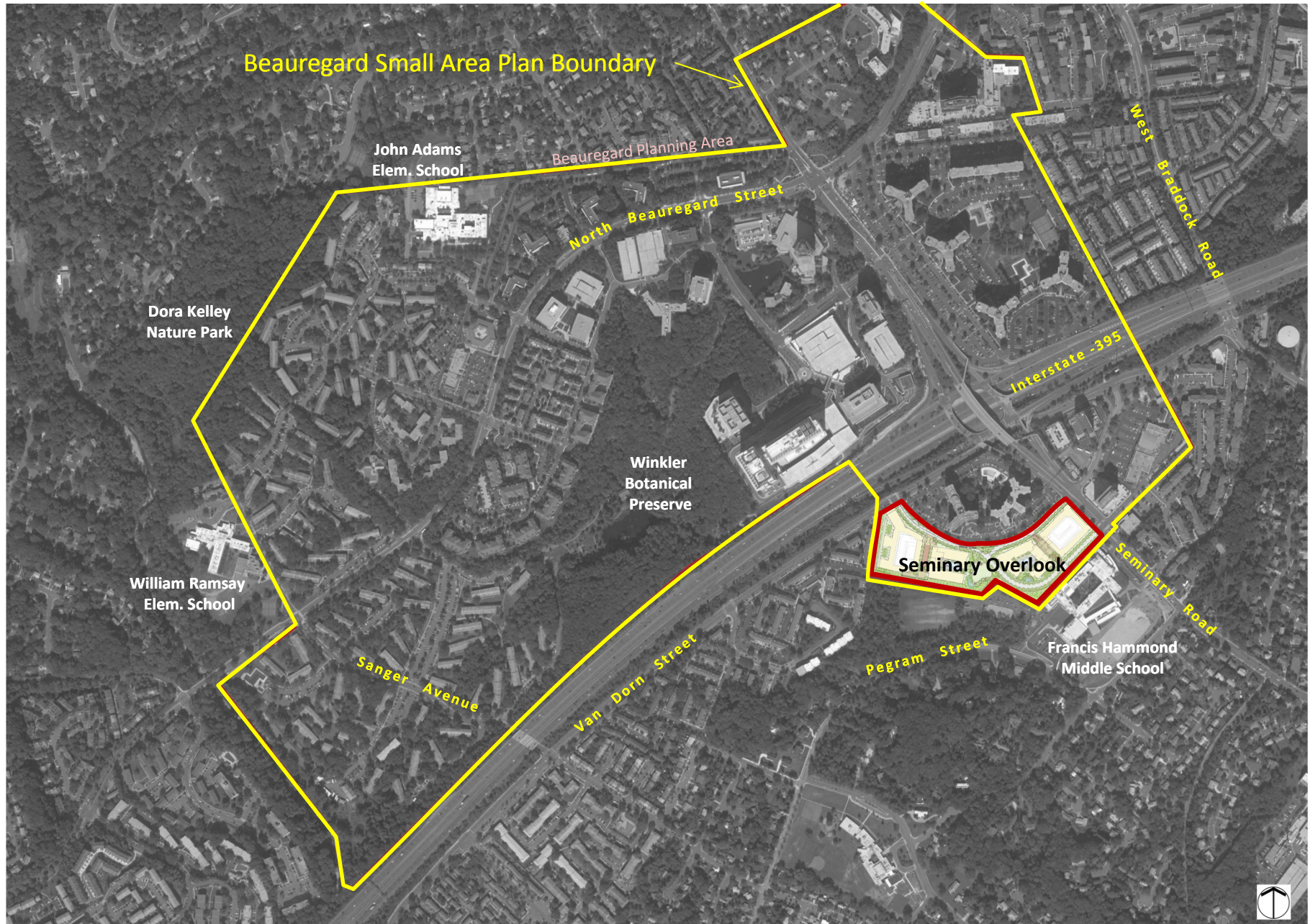
Beauregard Design Advisory Committee Public Meeting
February 18, 2014

Walsh, Colucci, Lubeley & Walsh, P.C. *(Attorney)*

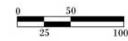
Hord Coplan Macht *(Architect & Landscape Architect)*

Bowman Consulting *(Civil Engineer)*

Wells and Associates *(Traffic Engineer)*



Conceptual Plan

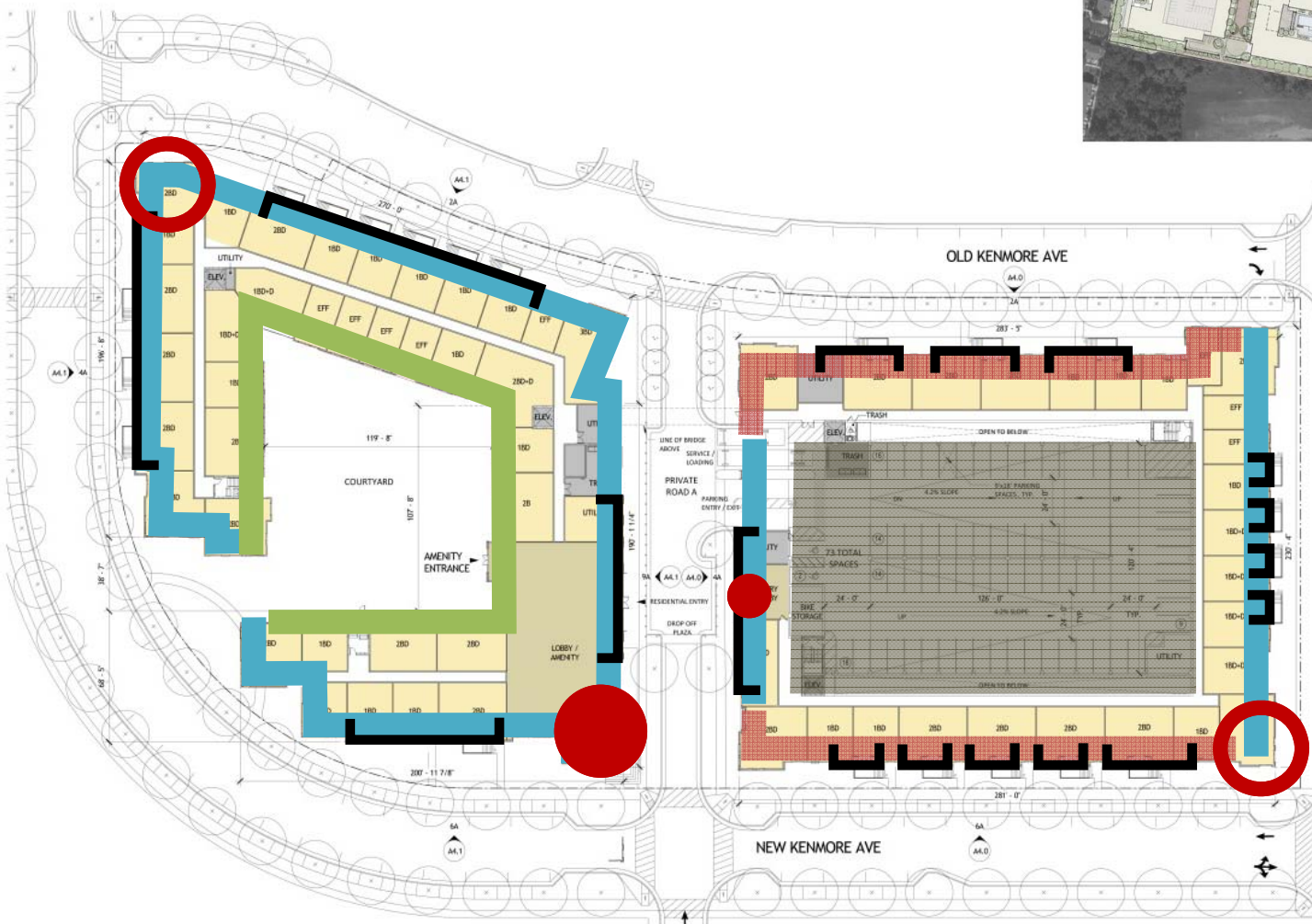




- Façade 'Type A'
- Façade 'Type B'
- Façade 'Type C'
- Façade 'Type D'
- 'Gateway' Elements
- 'Major' Entrances
- 'Minor' Entrances

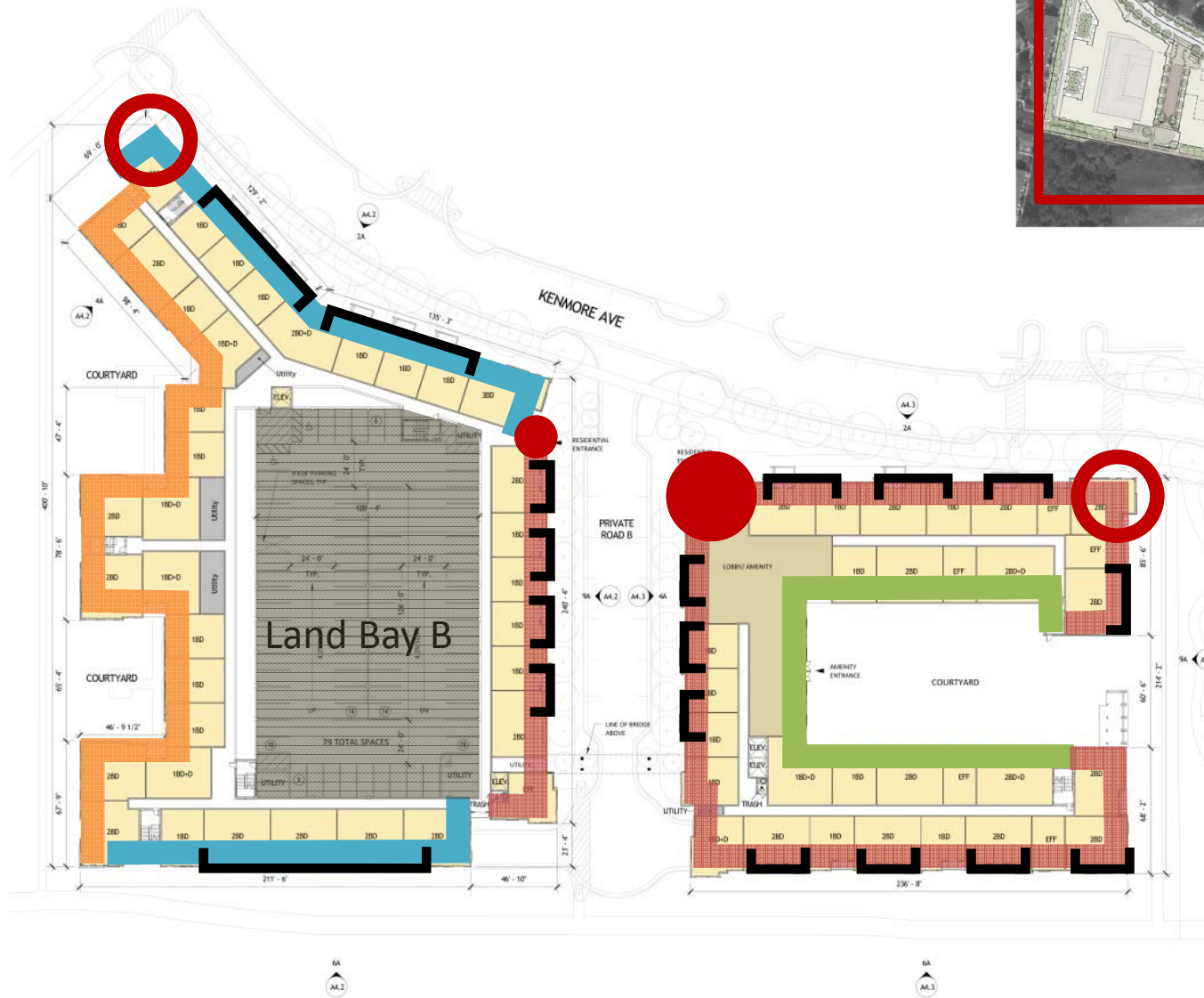


Land Bay 'A' Façade Strategy



- Façade 'Type A'
- Façade 'Type B'
- Façade 'Type C'
- Façade 'Type D'
- 'Gateway' Elements
- 'Major' Entrances
- 'Minor' Entrances
- Scale Elements

Land Bay 'B' Façade Strategy



- Façade 'Type A'
- Façade 'Type B'
- Façade 'Type C'
- Façade 'Type D'
- 'Gateway' Elements
- 'Major' Entrances
- 'Minor' Entrances
- Scale Elements

Façade 'Type A'

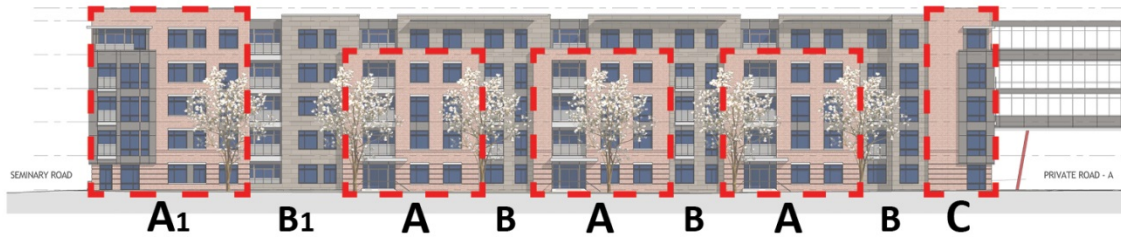


Perspective View - Old Kenmore Avenue at Landbay A



Perspective View - Central Green at Landbay B

Bay Rhythm - Example 1



Bay Rhythm - Example 2



Facade Axonometric View

Façade 'Type B'

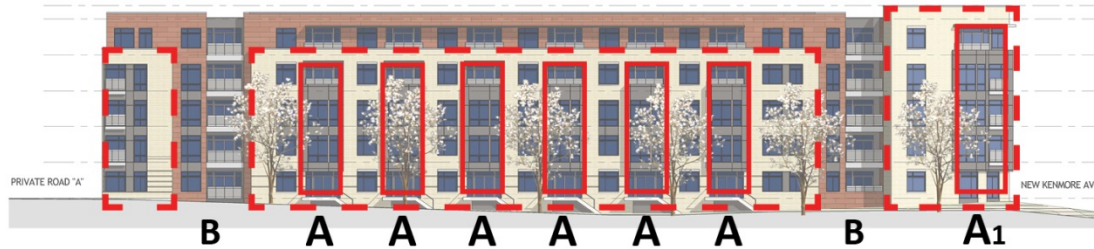


Perspective View - Old Kenmore Avenue at Landbay A



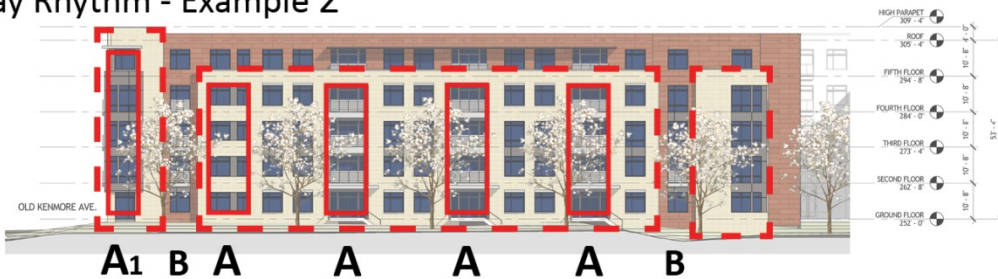
Perspective View - Private Road at Landbay A

Bay Rhythm - Example 1



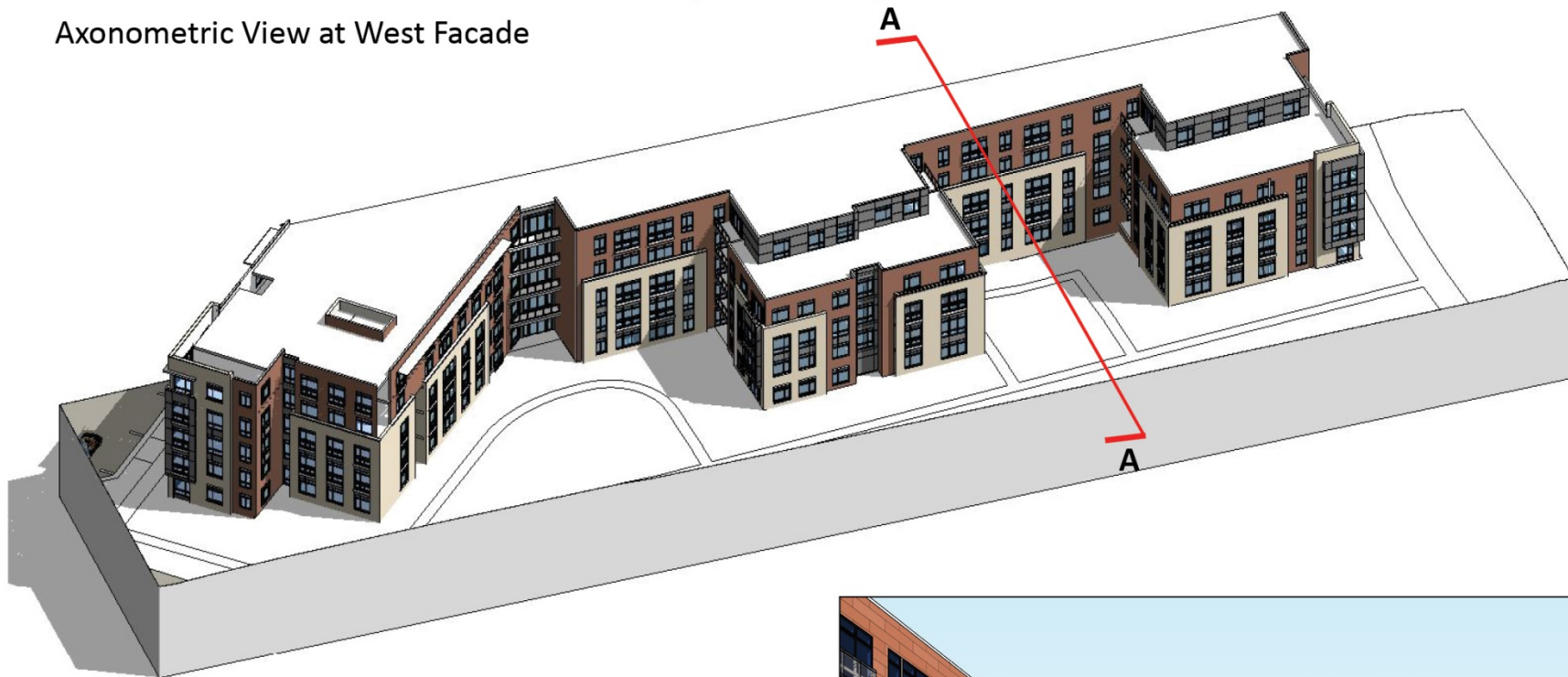
Facade Axonometric View

Bay Rhythm - Example 2



Façade 'Type C'

Axonometric View at West Facade



Site Section A-A



Perspective View - Public Trail along West Facade