



September 20, 2022

SAMUEL MADDEN

CONCEPT FROM BIAG MEETING 6/8/22



CURRENT DESIGN





UP TO 40' HEIGHT ALLOWED BY SMALL AREA PLAN



LOCATION 1



LOCATION 1



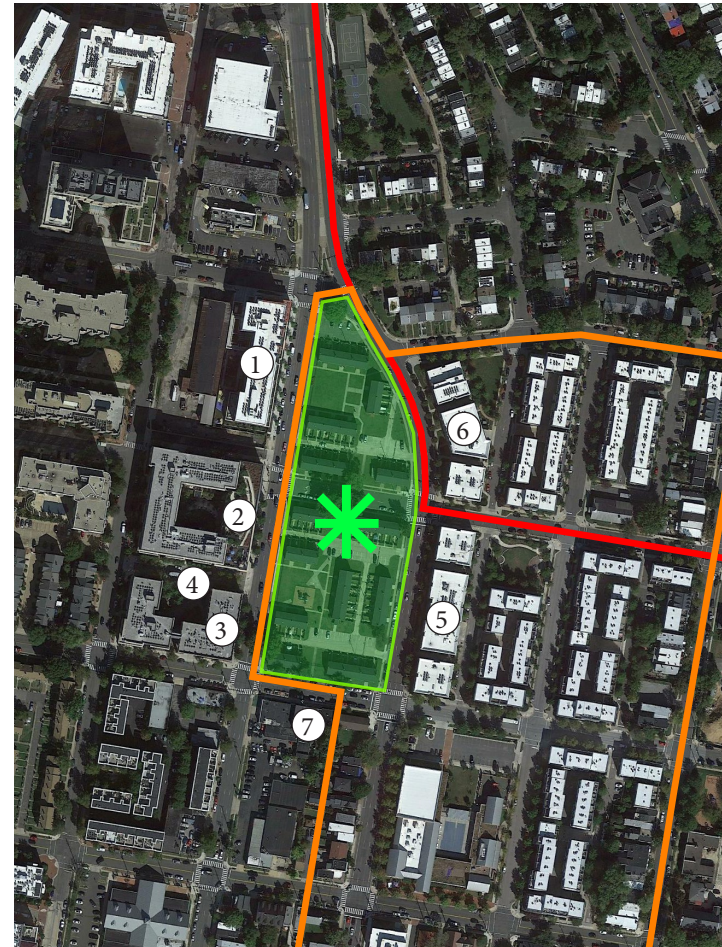
LOCATION 2



LOCATION 2



LOCATION 3



LOCATION 4



LOCATION 5



LOCATION 6



LOCATION 7



LOCATION 7

September 20, 2022 ©2022 Torti Gallas + Partners | 1923 Vermont Avenue, NW, Grimke School, 2nd Floor | Washington, DC 20001 | 301.588.4800



ALEXANDRIA REDEVELOPMENT AND HOUSING AUTHORITY
FAIRSTEAD
MILL CREEK RESIDENTIAL TRUST
THE COMMUNITIES GROUP

SITE CONTEXT
SAMUEL MADDEN



LOCATION 1 - PLATFORM



LOCATION 2 - PLATFORM



LOCATION 3 - MERIDIAN



LOCATION 4 - BEL PRE



LOCATION 5 - BRADDOCK PLACE CONDOMINIUM



LOCATION 6 - BEL PRE



LOCATION 7 - LINEAGE AT N PATRICK

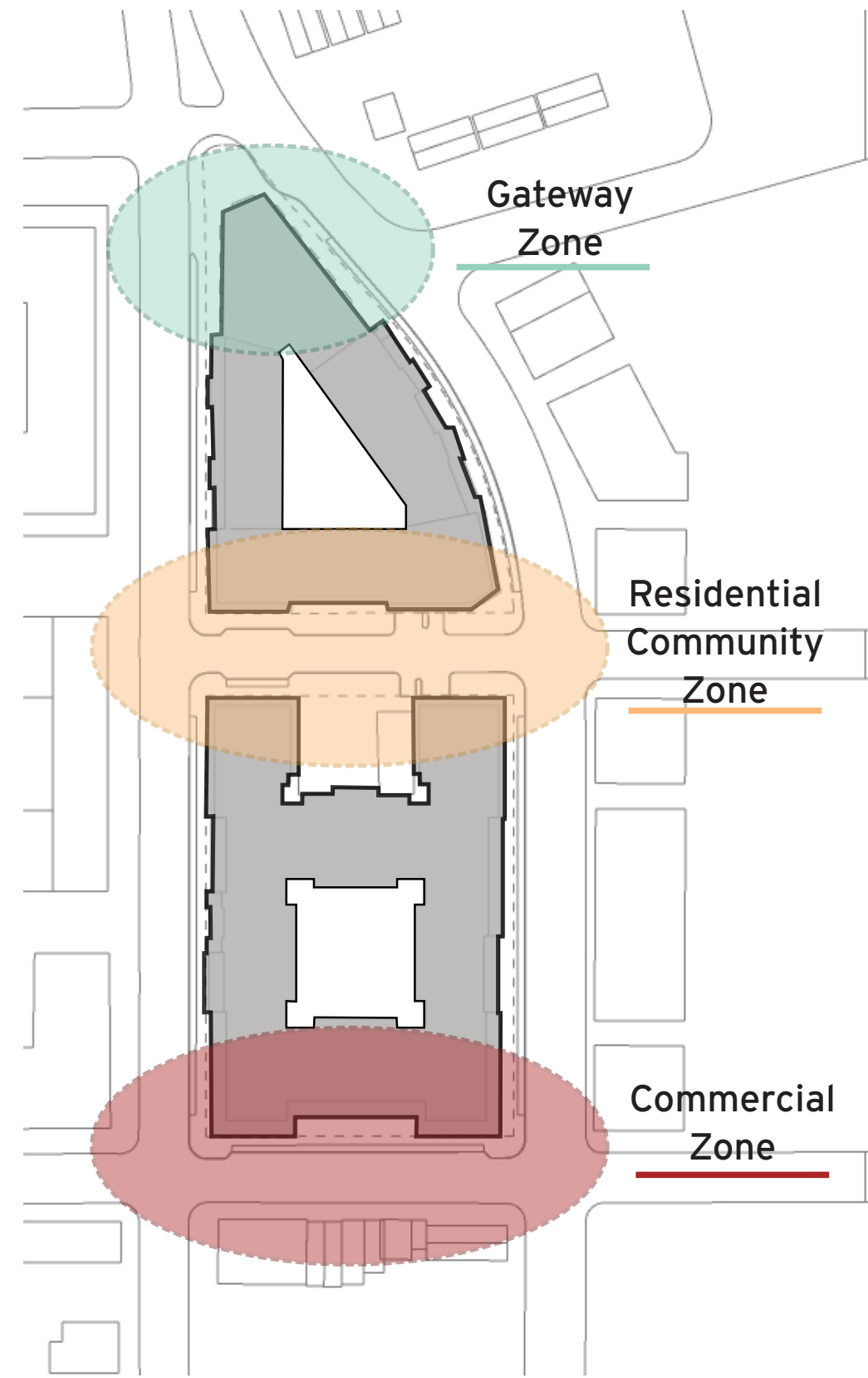
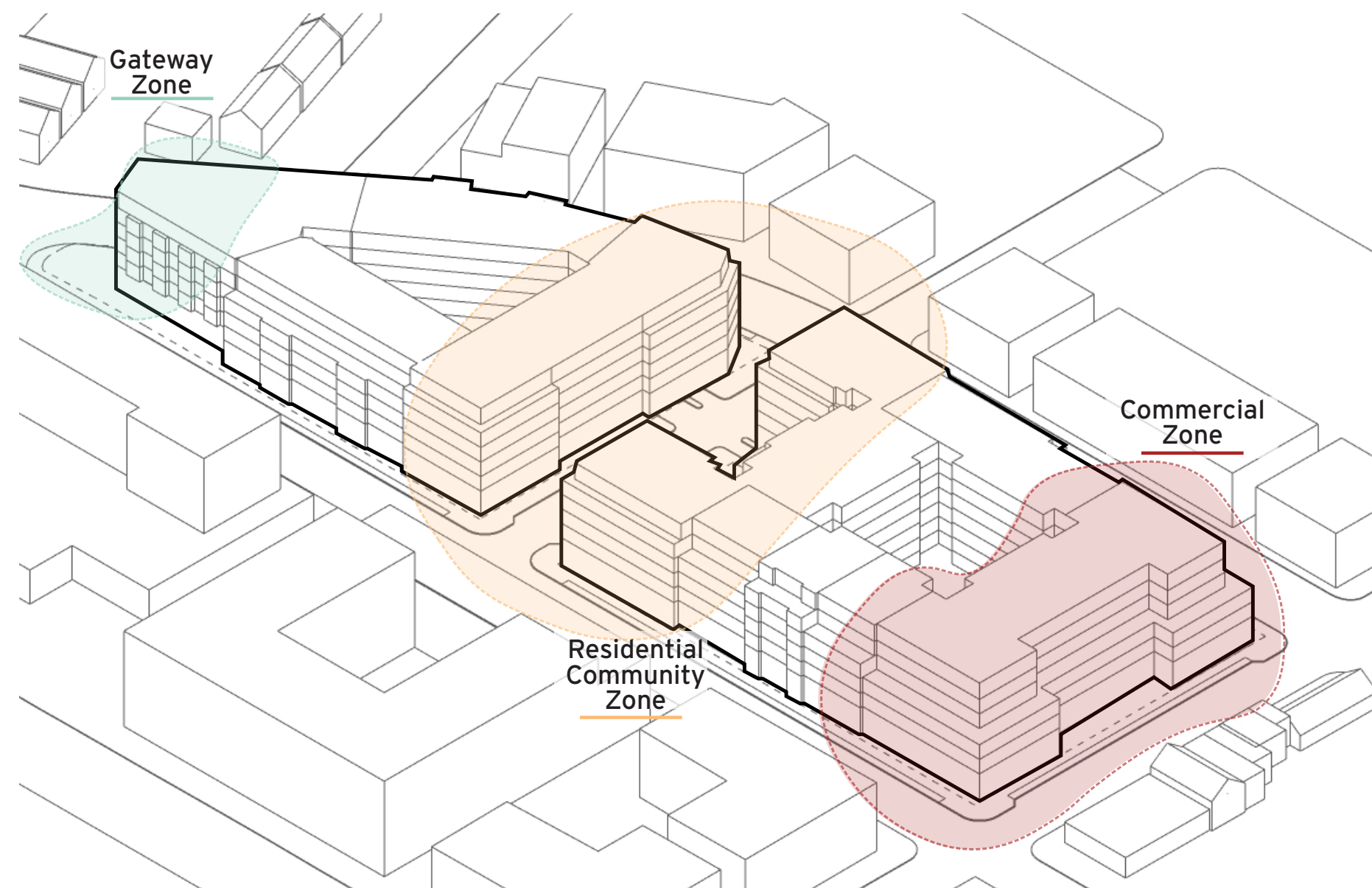
September 20, 2022 ©2022 Torti Gallas + Partners | 1923 Vermont Avenue, NW, Grimke School, 2nd Floor | Washington, DC 20001 | 301.588.4800



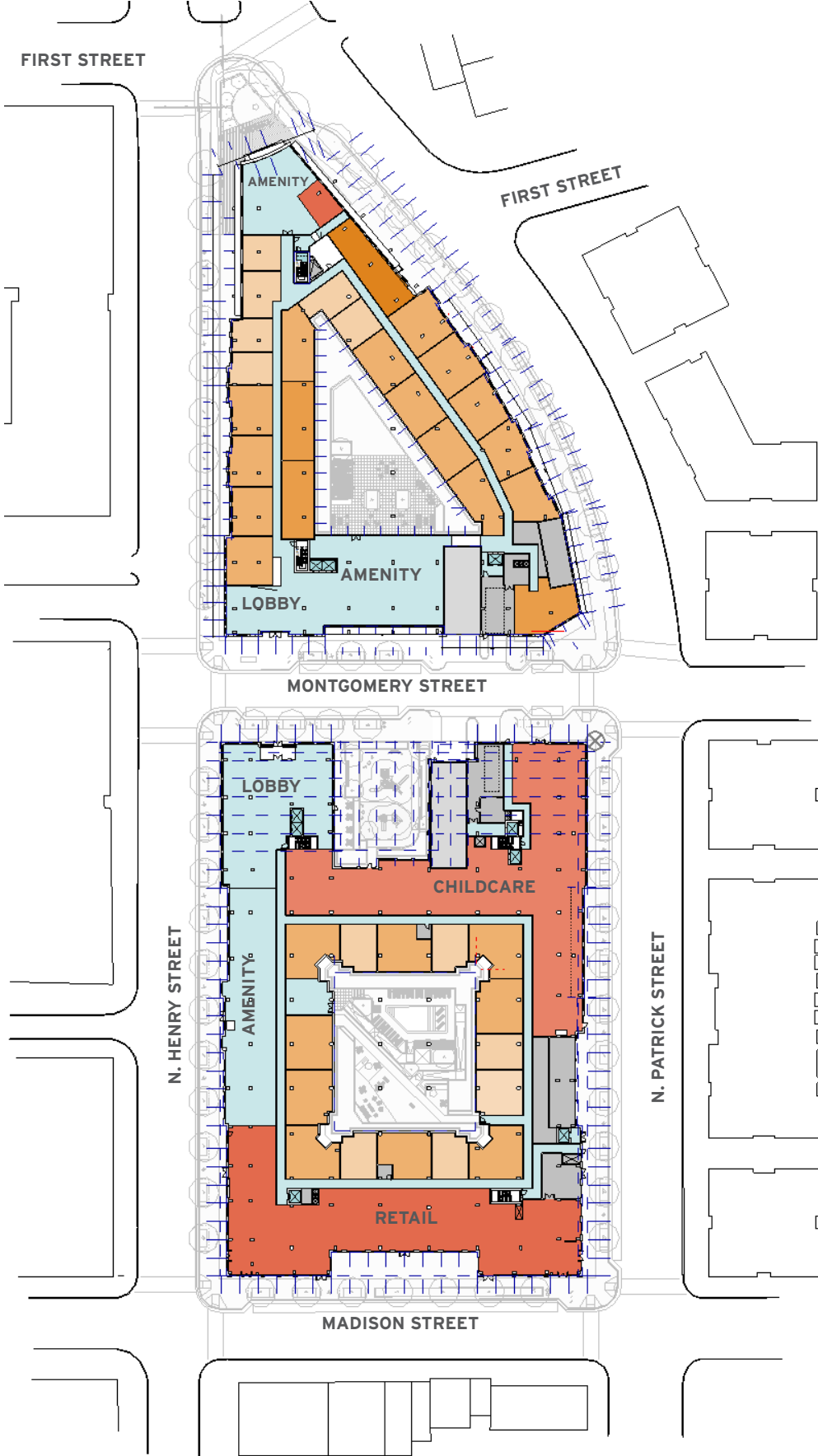
ALEXANDRIA REDEVELOPMENT AND HOUSING AUTHORITY
FAIRSTEAD
MILL CREEK RESIDENTIAL TRUST
THE COMMUNITIES GROUP

NEIGHBORHOOD CONTEXT
SAMUEL MADDEN

URBAN CONTEXT



SITE PLAN

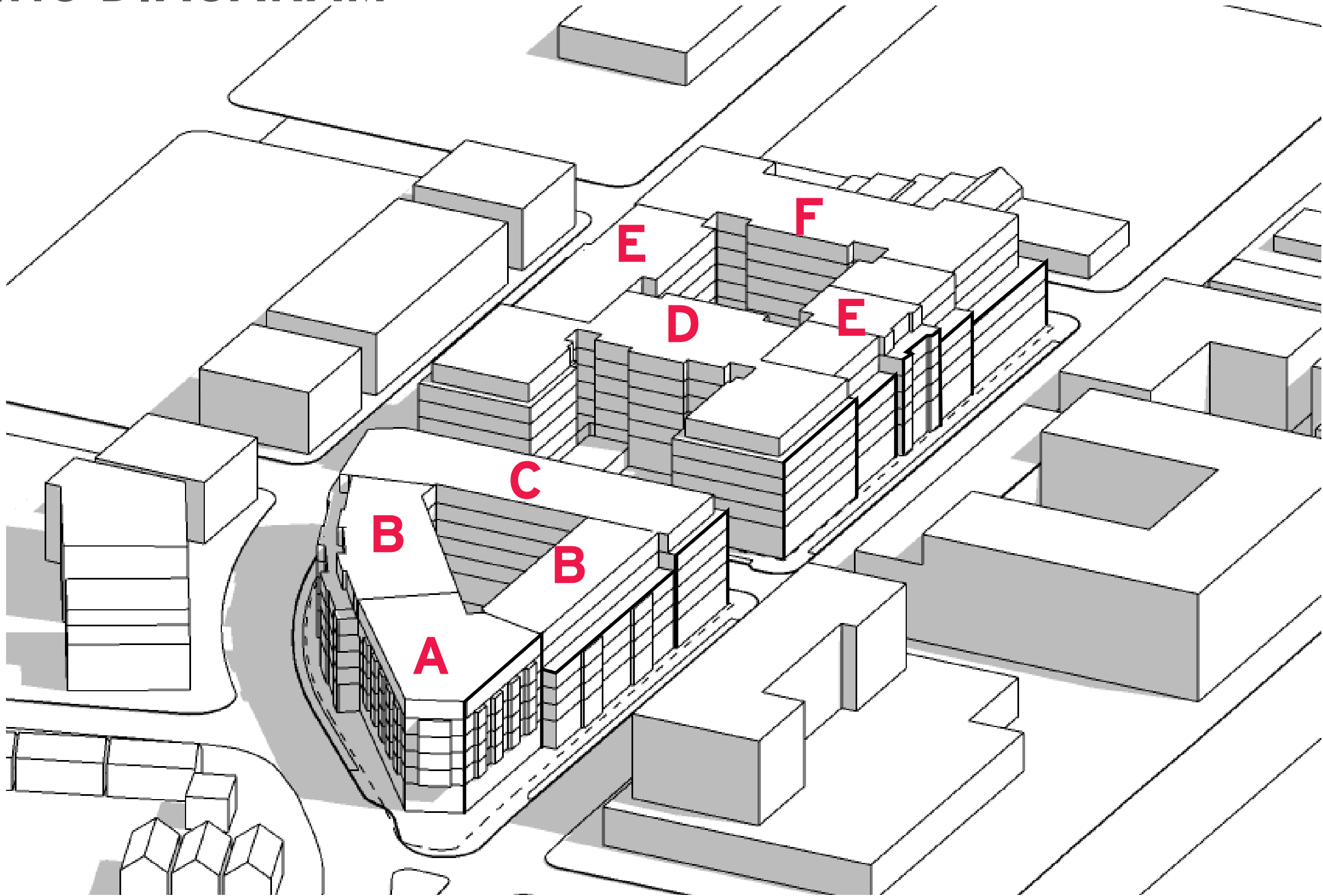


September 20, 2022 ©2022 Torti Gallas + Partners | 1923 Vermont Avenue, NW, Grimke School, 2nd Floor | Washington, DC 20001 | 301.588.4800



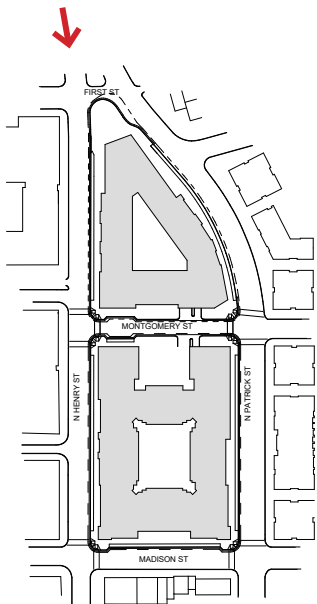
ALEXANDRIA REDEVELOPMENT AND HOUSING AUTHORITY
FAIRSTEAD
MILL CREEK RESIDENTIAL TRUST
THE COMMUNITIES GROUP

MASSING DIAGARAM





VIEW FROM N. HENRY STREET AND FIRST STREET



September 20, 2022 ©2022 Torti Gallas + Partners | 1923 Vermont Avenue, NW, Grimke School, 2nd Floor | Washington, DC 20001 | 301.588.4800

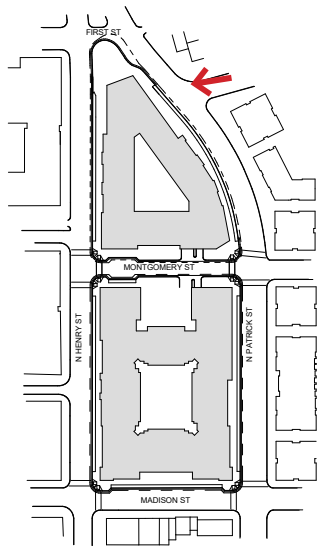


ALEXANDRIA REDEVELOPMENT AND HOUSING AUTHORITY
FAIRSTEAD
MILL CREEK RESIDENTIAL TRUST
THE COMMUNITIES GROUP

3D PERSPECTIVE VIEWS
SAMUEL MADDEN

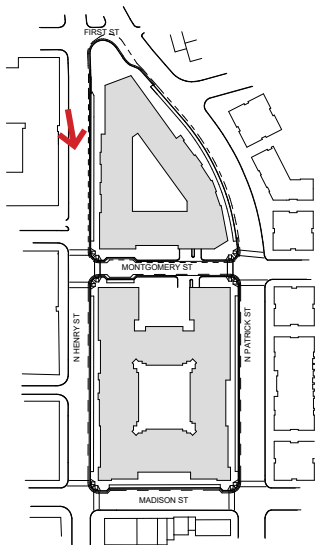


VIEW LOOKING NORTHEAST AT CORNER OF N. HENRY STREET AND MONTGOMERY STREET





VIEW LOOKING SOUTH ALONG N. HENRY STREET



September 20, 2022 ©2022 Torti Gallas + Partners | 1923 Vermont Avenue, NW, Grimke School, 2nd Floor | Washington, DC 20001 | 301.588.4800

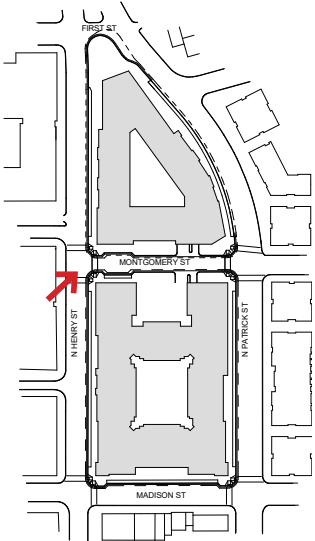


ALEXANDRIA REDEVELOPMENT AND HOUSING AUTHORITY
 FAIRSTEAD
 MILL CREEK RESIDENTIAL TRUST
 THE COMMUNITIES GROUP

3D PERSPECTIVE VIEWS
 SAMUEL MADDEN

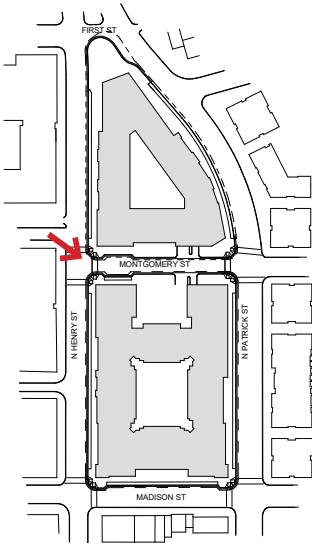


VIEW LOOKING NORTHEAST AT CORNER OF N. HENRY STREET AND MONTGOMERY STREET



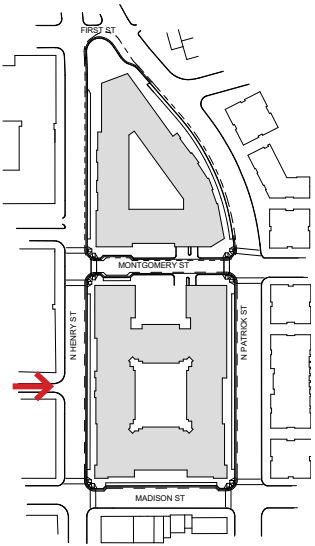


VIEW LOOKING SOUTHEAST AT CORNER OF N. HENRY STREET AND MONTGOMERY STREET



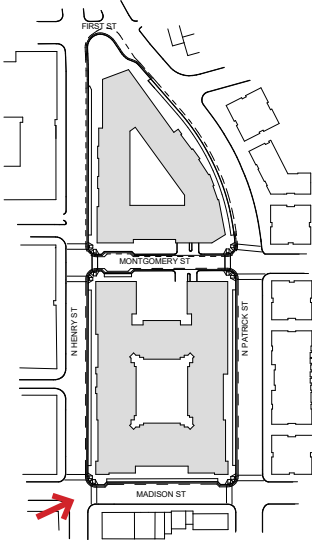


VIEW LOOKING EAST FROM BEL PRE WAY





VIEW LOOKING NORTHEAST AT CORNER OF N. HENRY STREET AND MADISON STREET



September 20, 2022 ©2022 Torti Gallas + Partners | 1923 Vermont Avenue, NW, Grimke School, 2nd Floor | Washington, DC 20001 | 301.588.4800

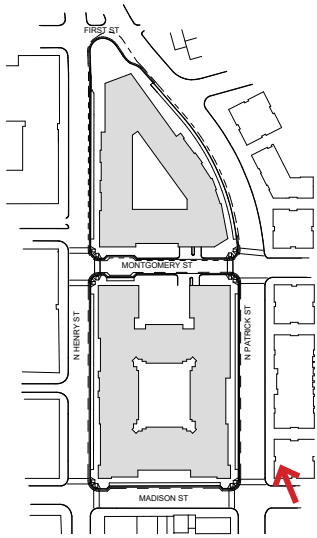


ALEXANDRIA REDEVELOPMENT AND HOUSING AUTHORITY
FAIRSTEAD
MILL CREEK RESIDENTIAL TRUST
THE COMMUNITIES GROUP

3D PERSPECTIVE VIEWS
SAMUEL MADDEN



VIEW LOOKING NORTHWEST AT CORNER OF N. PATRICK STREET AND MADISON STREET

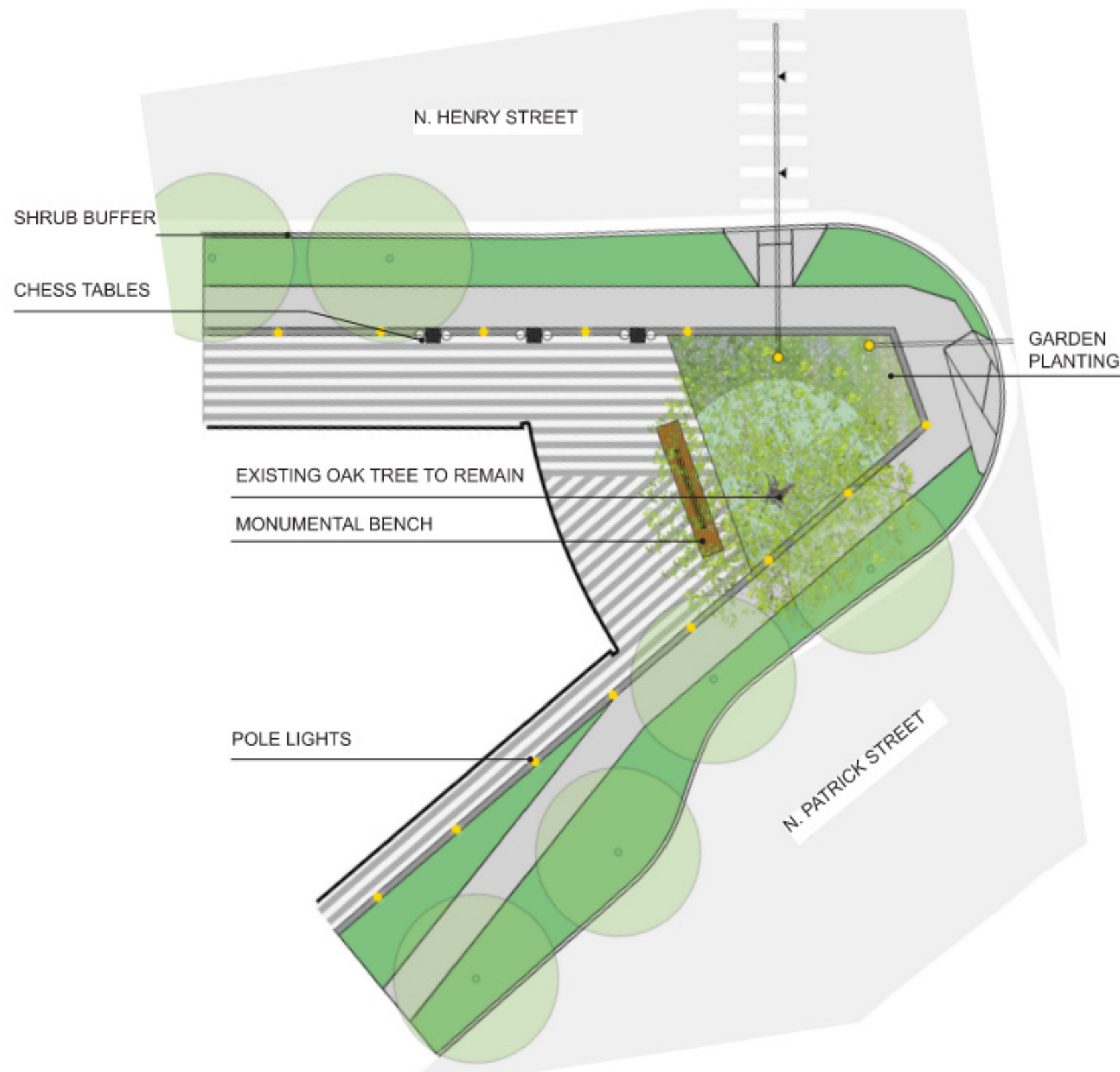


September 20, 2022 ©2022 Torti Gallas + Partners | 1923 Vermont Avenue, NW, Grimke School, 2nd Floor | Washington, DC 20001 | 301.588.4800



ALEXANDRIA REDEVELOPMENT AND HOUSING AUTHORITY
FAIRSTEAD
MILL CREEK RESIDENTIAL TRUST
THE COMMUNITIES GROUP

3D PERSPECTIVE VIEWS
SAMUEL MADDEN





Gadsby historic pole light

02 LIGHTING | HISTORIC POLE

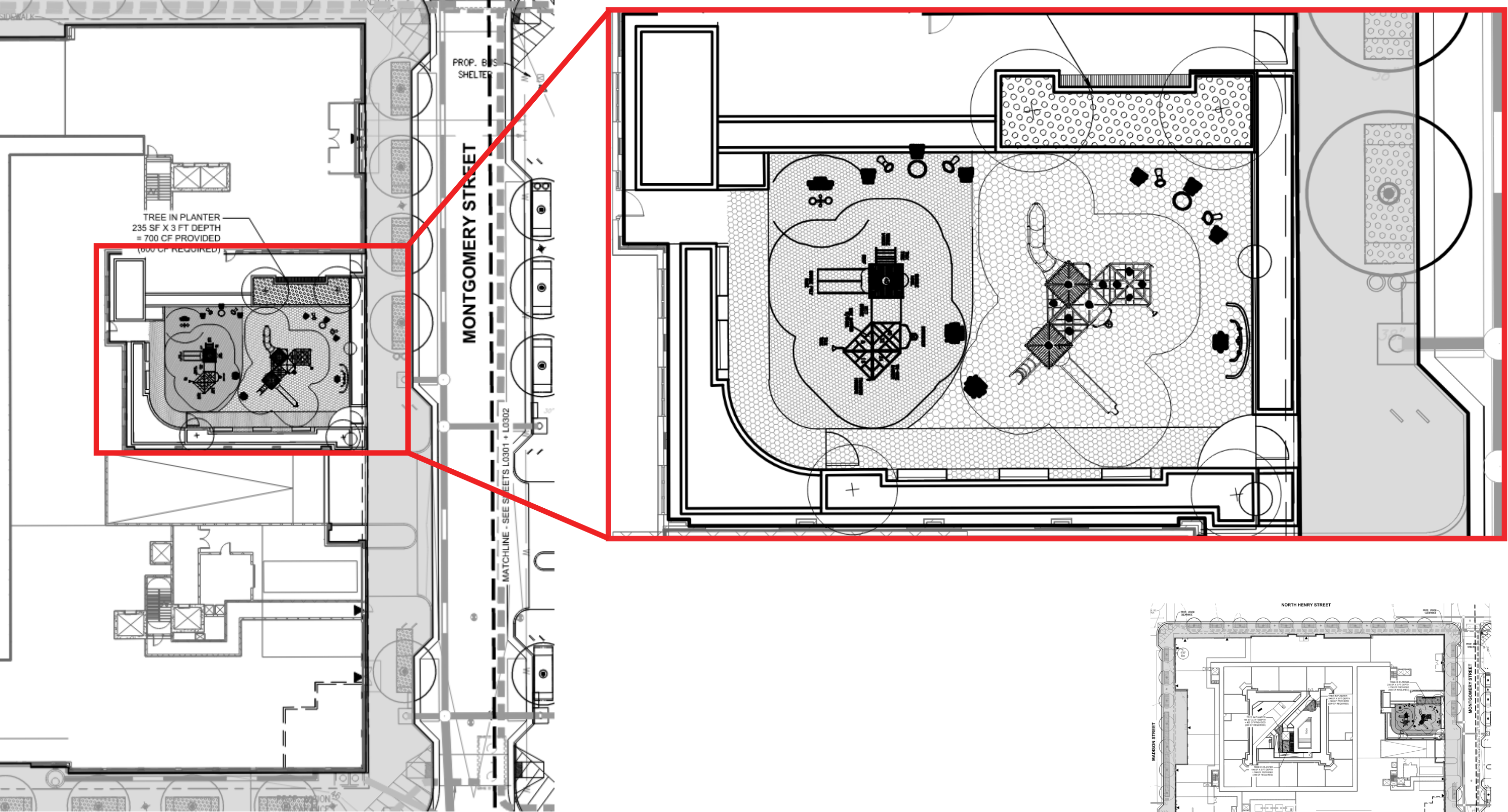




September 20, 2022

SAMUEL MADDEN

MONTGOMERY STREET COURTYARD

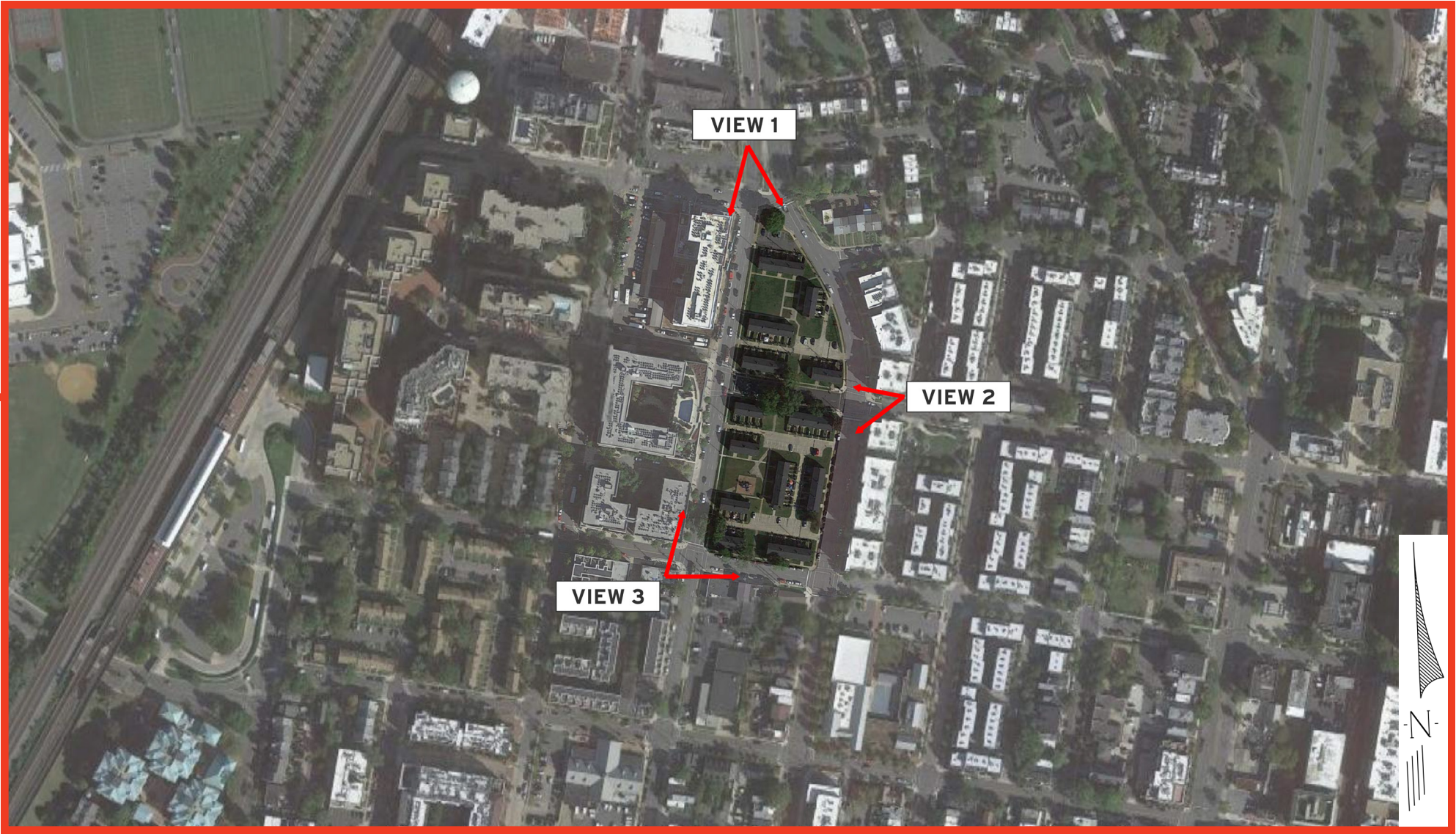
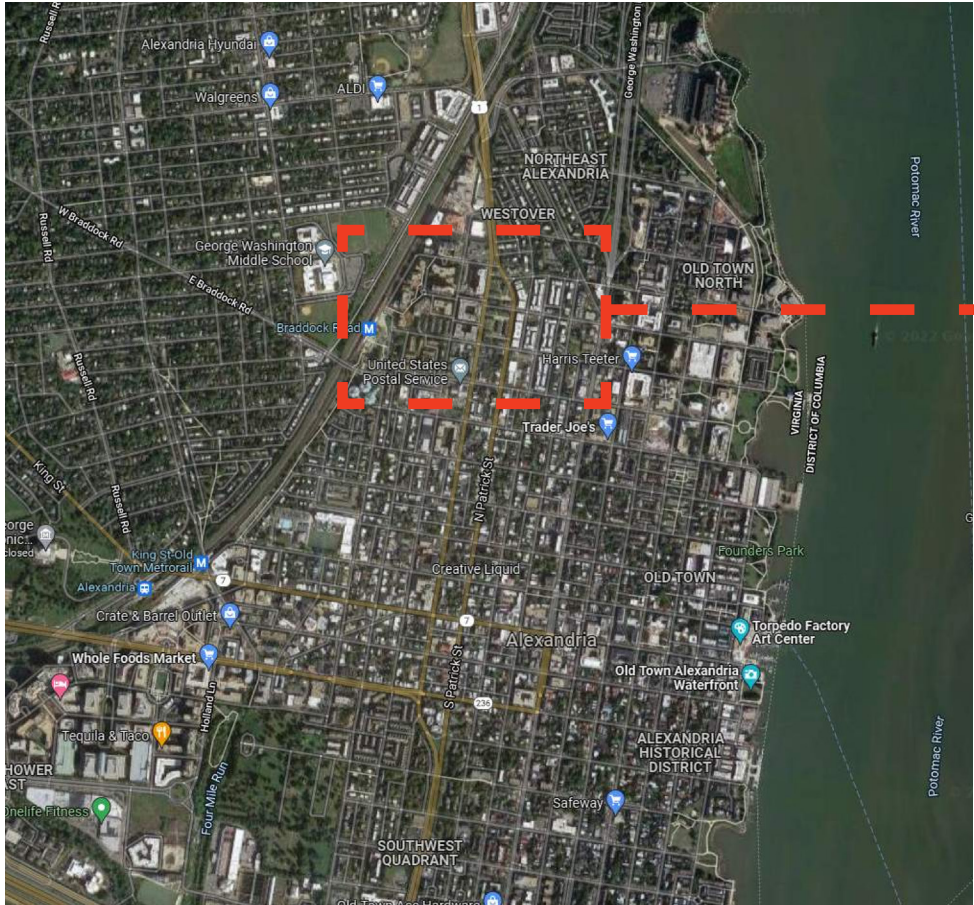


September 20, 2022 ©2022 Torti Gallas + Partners | 1923 Vermont Avenue, NW, Grimke School, 2nd Floor | Washington, DC 20001 | 301.588.4800



ALEXANDRIA REDEVELOPMENT AND HOUSING AUTHORITY
FAIRSTEAD
MILL CREEK RESIDENTIAL TRUST
THE COMMUNITIES GROUP





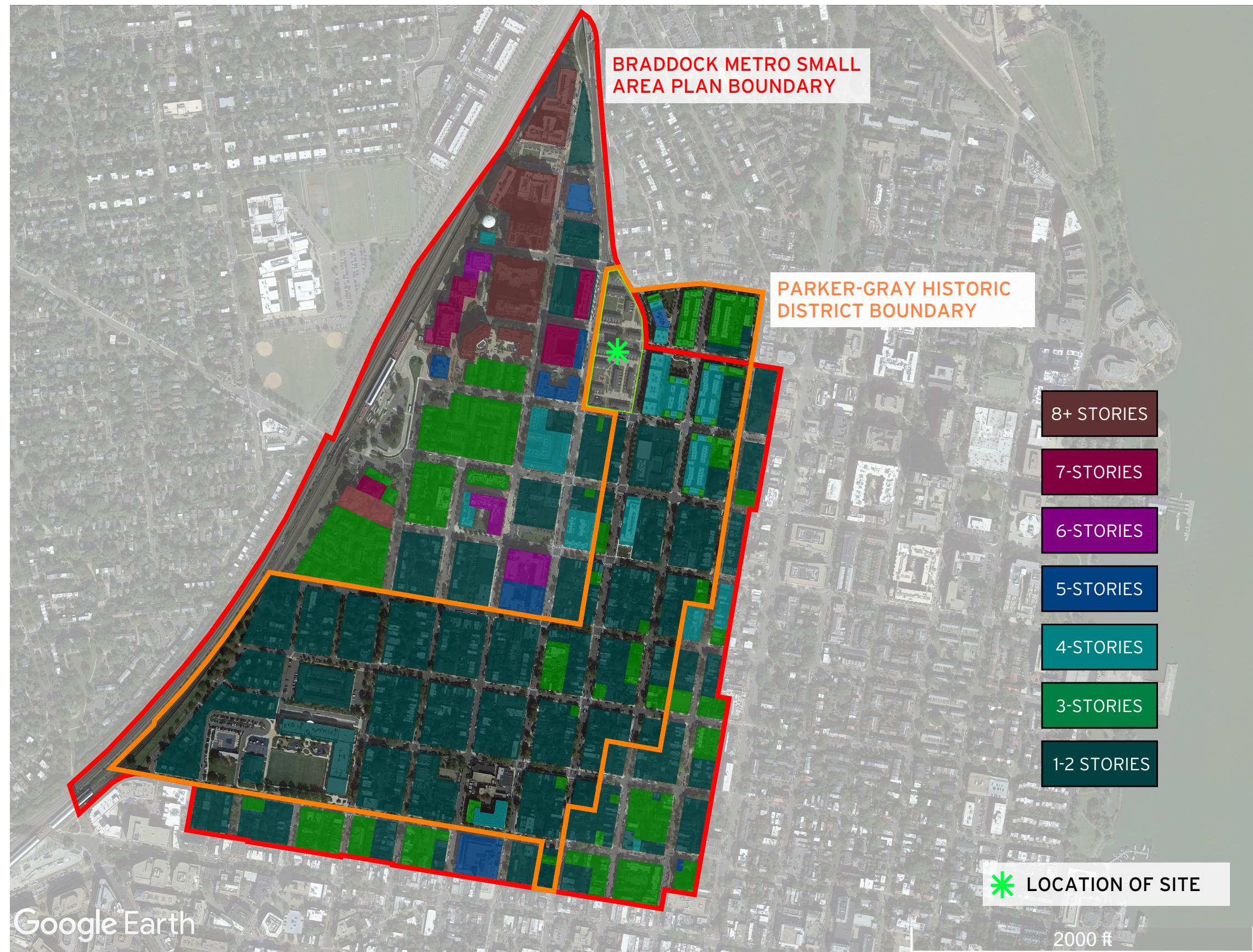
VIEW 1



VIEW 2



VIEW 3



Building Height and Massing

