

GLAVÉ &
HOLMES

HealyKohler Design

Murray Dick Fawcett House
Comprehensive Plan

Concepts

May 14-15, 2024

Introductions



GLAVÉ & HOLMES
ARCHITECTURE

HealyKohler Design

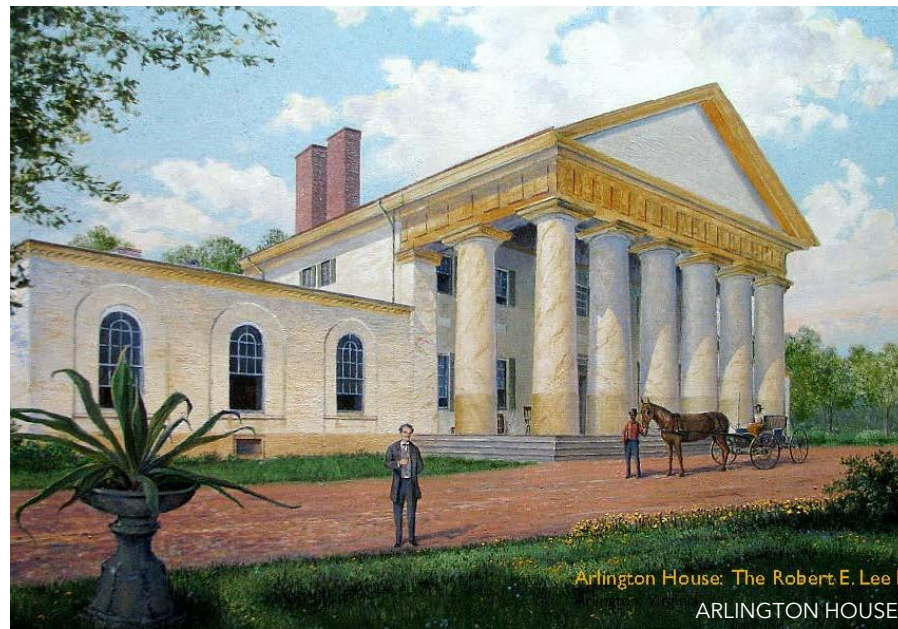
GLAVE & HOLMES

- Based in Richmond, VA
- Established in 1965
- 60-Person Firm
Specializing in
Architecture & Historic
Preservation



HEALY KOHLER DESIGN

- Based in Washington, DC
- Nationwide Experience Developing Museum and Guest Oriented Spaces
- Specialize in Exhibit Design & Interpretive Planning



Site History







Figure 1a - Murray-Dick-Fawcett House, before 1900 [Special Collections, Alexandria Library, MS254 (Grigg/Lamond)]

GLAVÉ & HOLMES
ARCHITECTURE

**Murray-Dick-Fawcett House
Historic Structure Report**

Report by Glavé & Holmes Architecture for the Office of Historic Alexandria,
City of Alexandria, Virginia | April 19, 2024

the property into a destination for public
visitation and heritage tourism.

¹National Register of Historic Places, National Park Service, Alexan-
dria Historic District Additional Documentation, 2017, continuation
sheet 1.

scan of the building by a skilled consultant,
resulting in detailed graphic documentation for
the entire site. The project team followed up
on-site examinations with a narrative history and
description, matching the known changes made
by the successive owners to the actual building

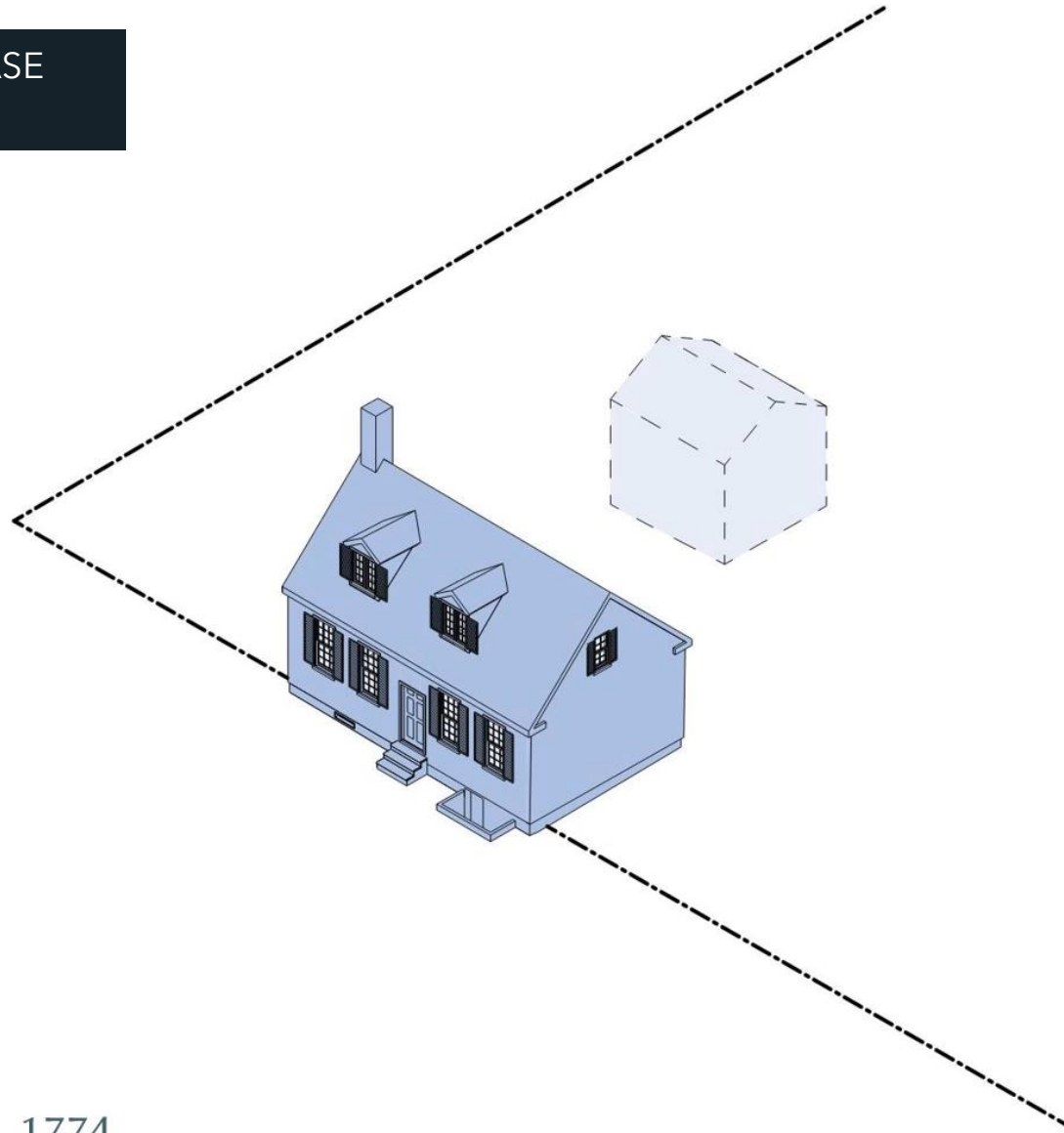
Digital Scaled Drawings
Appendix A
Structural Analysis
Appendix B
MEP Analysis

05
11
15
19
33
45
55
83
103
119
129
139
147
173
181
225
229
237
245
265

History

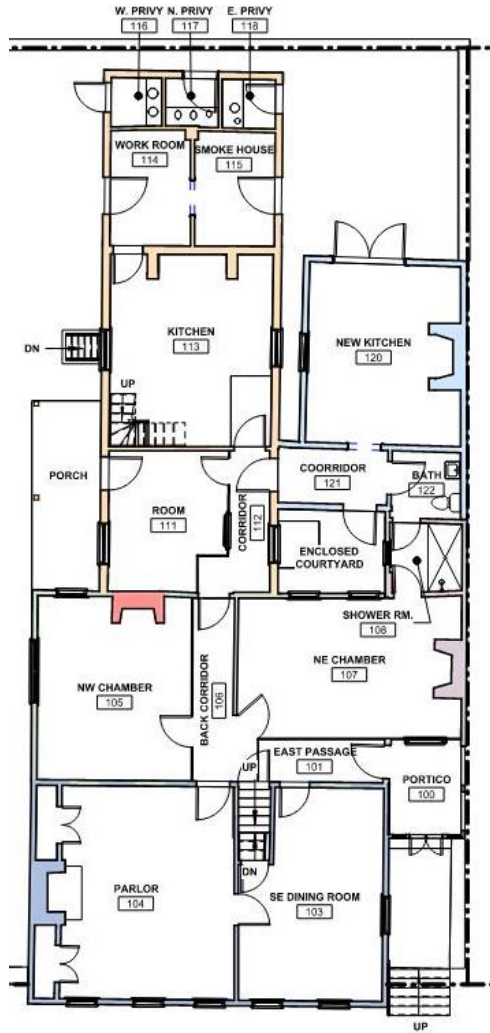
- Traditional frame hall/chamber house built in 1774 by Patrick Murray
- Enlarged by Murray in 1785
- Acquired by merchants William Newton and Thomas Ricketts in 1795
- Brick back building added to the rear in 1797 contained lobby, kitchen, smoke house, work room, and 3 privies
- Door relocated and east extension added by merchant John Douglas Brown and Mary Gretter Brown in 1816
- Minor changes by Brown, Hooff and Fawcett families
- Alterations by Joe Reeder in 2001/2

AXONOMETRIC PHASE
DIAGRAM VIDEO



FIRST PHASE - 1774

- | | |
|---|---|
|  FIRST PHASE - 1774 |  FIFTH PHASE - 1816 |
|  SECOND PHASE - 1784 |  SIXTH PHASE - 1854-1858 |
|  THIRD PHASE - 1784-1797 |  SEVENTH PHASE - 1915-1971 |
|  FOURTH PHASE - 1797 |  EIGHTH PHASE - 2001-2002 |



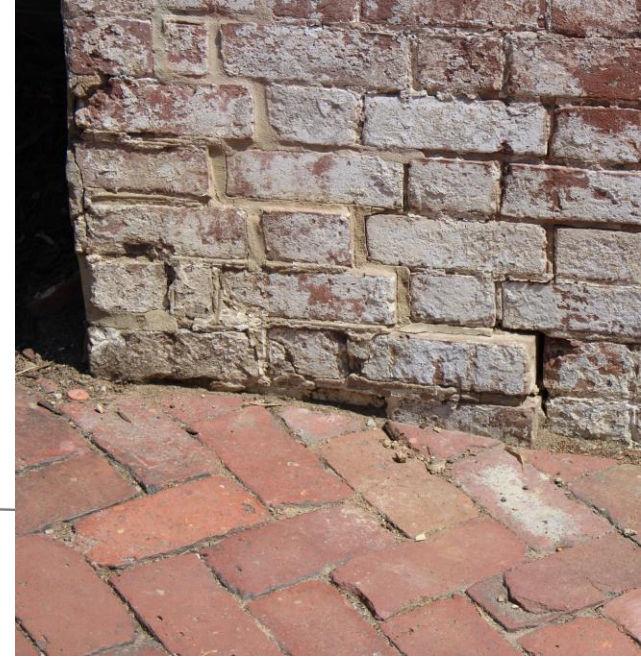
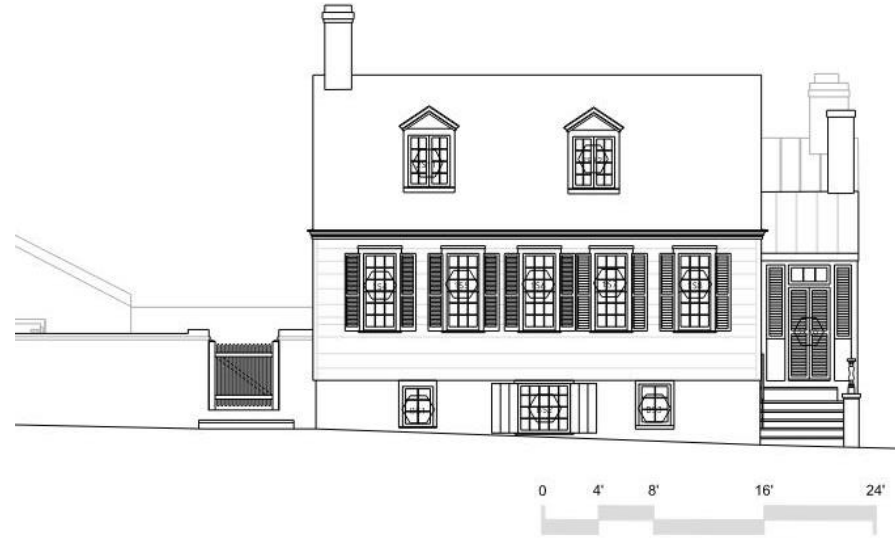
- | | | | |
|---|-------------------------|---|---------------------------|
|  | FIRST PHASE - 1774 |  | FIFTH PHASE - 1816 |
|  | SECOND PHASE - 1784 |  | SIXTH PHASE - 1854-1858 |
|  | THIRD PHASE - 1784-1797 |  | SEVENTH PHASE - 1915-1971 |
|  | FOURTH PHASE - 1797 |  | EIGHTH PHASE - 2001-2002 |



Murray-Dick-Fawcett House

HSR CONCLUSIONS

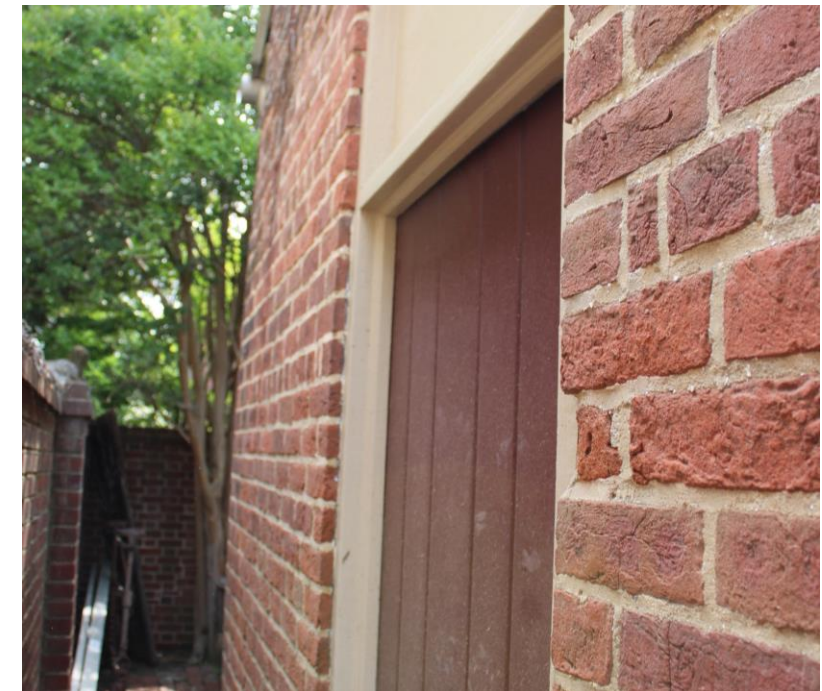
- The HSR is the guide to moving forward
- The house's fabric is generally very good but extremely fragile
- Accessibility within the house is a real challenge
- There is no way to make most rooms directly accessible
- The basement and upper floor will only be available for special tours
- Much interpretation will be provided on the exterior and in the garden



HSR CONCLUSIONS

Recommendations include:

- Remove the 2002 Kitchen wing
- Remove all plumbing from house
- Restore the north façade and repair modifications
- Perform additional paint analysis and also dendrochronology to confirm dates of key building elements



HSR CONCLUSIONS

- Structural repairs are needed
- HVAC and Electrical upgrades to support museum use.
- Electrical upgrades
- The house will be exhibited with limited furnishings



*Preliminary
Vision*



BASIC OPERATION PATTERNS

- Daily Site Access to Garden
- Weekend/Monthly Tours
- Semi-Annual Special Programs
- Occasional Events and Functions



POTENTIAL OCCUPANCIES

- Site Usage: 5-10 People/Day
- Open Hours: 25-50 People/Day
- Events: 40-50 People Maximum
- Specialty Tours / Open House: 12-100 People

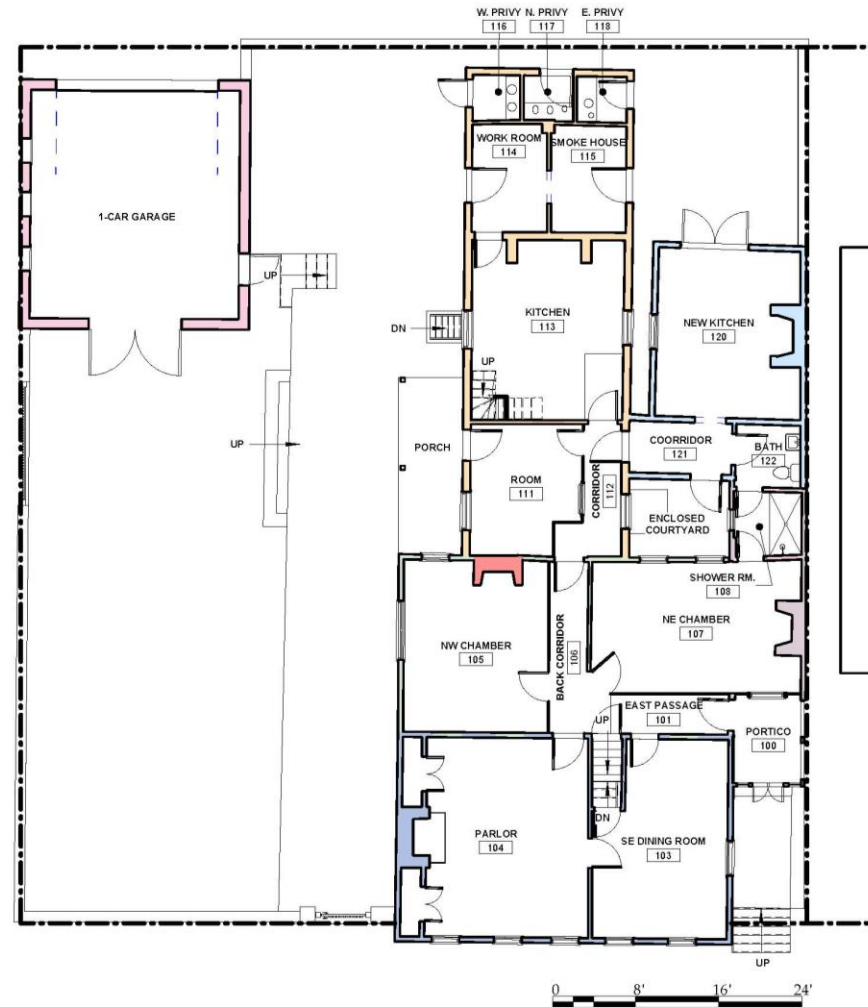


TYPES OF USES

- Garden Access / Interpretation
- Self-Guided Tours
- Guided Tours
- Garden Events



EXISTING PLAN



Current First Floor Plan

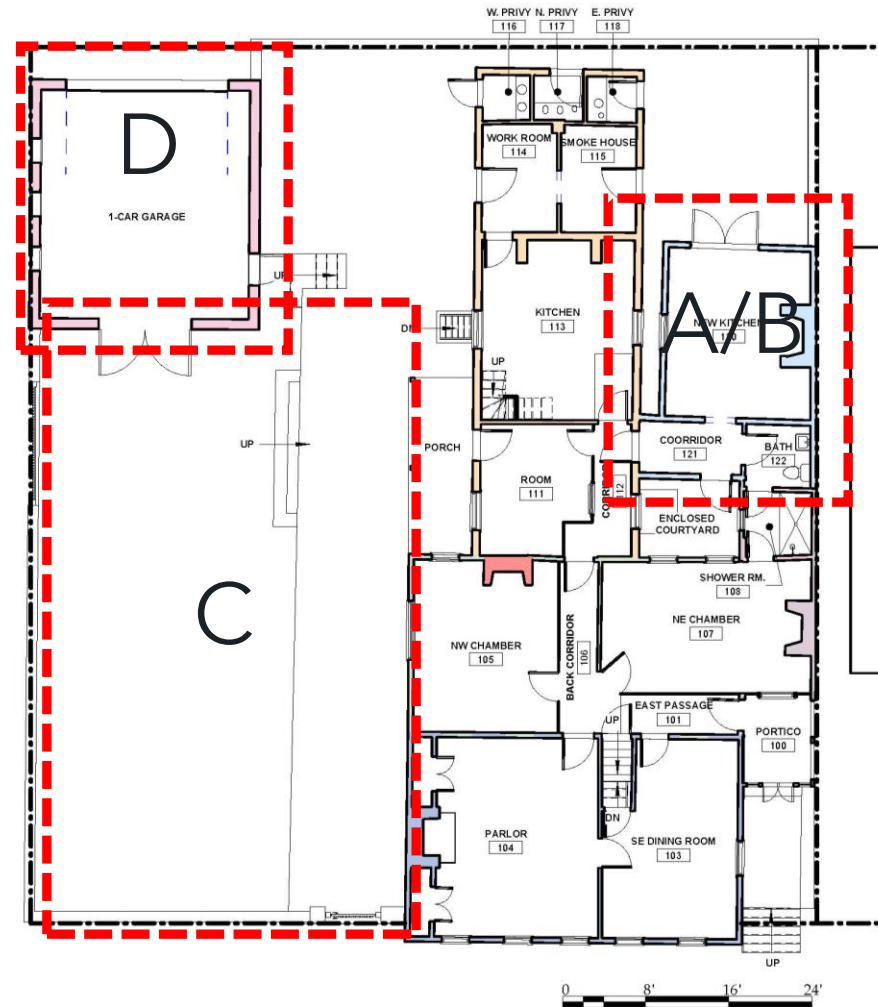


KEY

■ FIRST PHASE - 1774	■ FIFTH PHASE - 1816
■ SECOND PHASE - 1784	■ SIXTH PHASE - 1854-1858
■ THIRD PHASE - 1784-1797	■ SEVENTH PHASE - 1915-1971
■ FOURTH PHASE - 1797	■ EIGHTH PHASE - 2001-2002
	■ NINTH PHASE - 2021-2022

ANTICIPATED CHANGES

- A - Remove 2002 Kitchen
- B - Restore North Façade
- C - Garden Updates for Accessibility, Site Improvement and Interpretation
- D - Garage Conversion



Current First Floor Plan



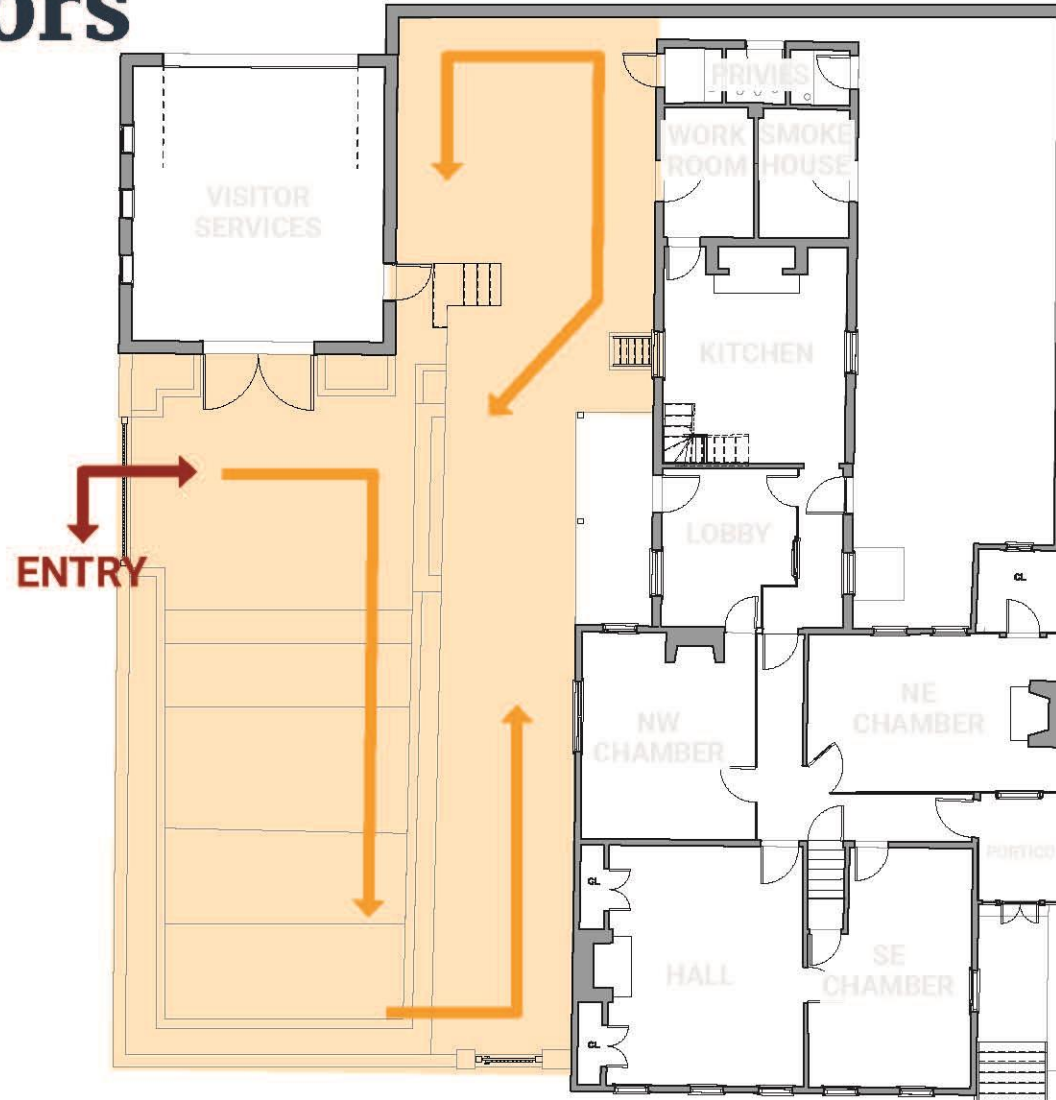
KEY

	FIRST PHASE - 1774		FIFTH PHASE - 1816
	SECOND PHASE - 1784		SIXTH PHASE - 1854-1858
	THIRD PHASE - 1784-1797		SEVENTH PHASE - 1915-1971
	FOURTH PHASE - 1797		EIGHTH PHASE - 2001-2002
			NINTH PHASE - 2021-2022

A large, white, decorative flourish or scrollwork element is positioned on the left side of the slide, partially overlapping the text.

Tour Flow Options

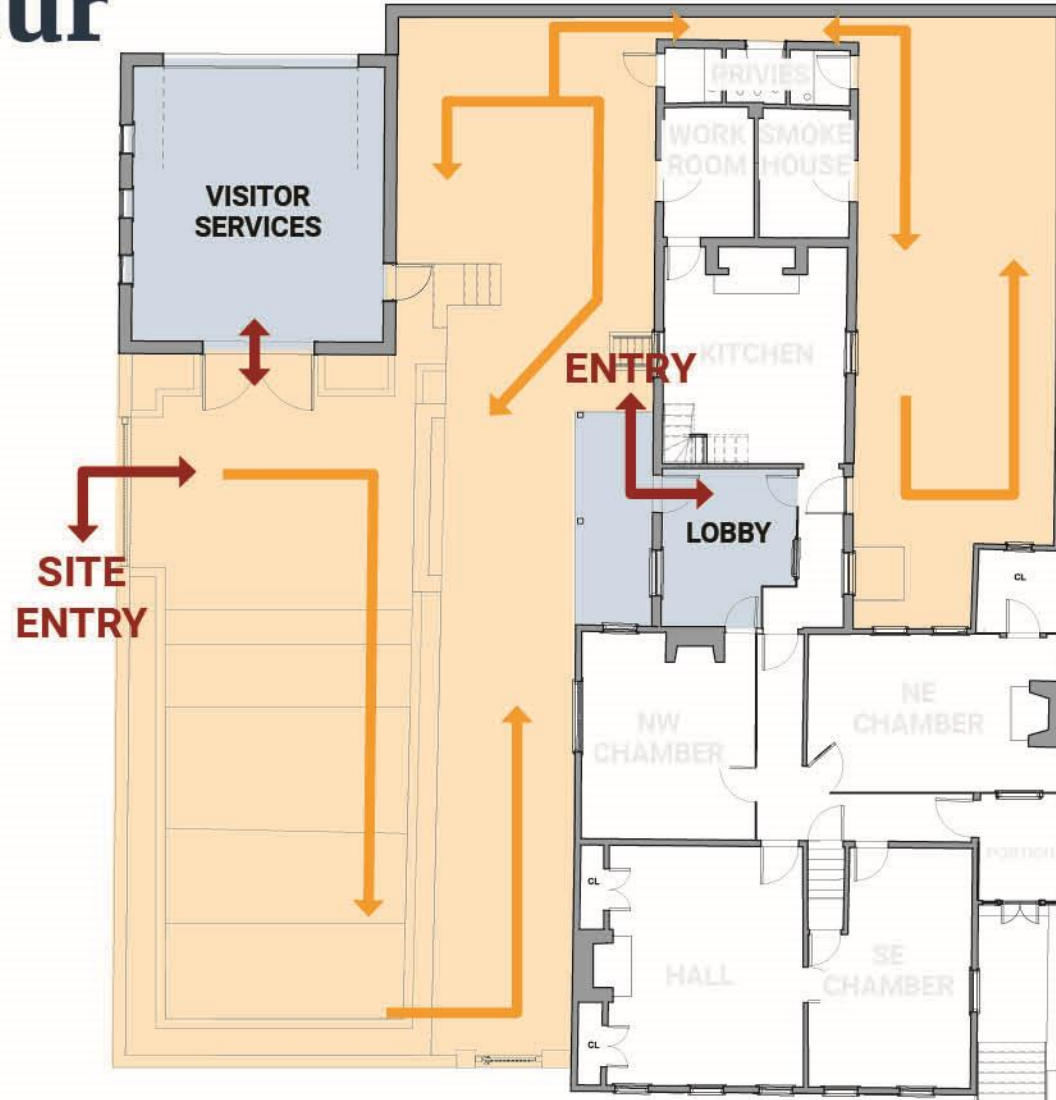
UNSTAFFED General Visitors



- Exterior Usage
- Interior Usage
- Exterior Circulation
- Interior Circulation
- Entries/Exits



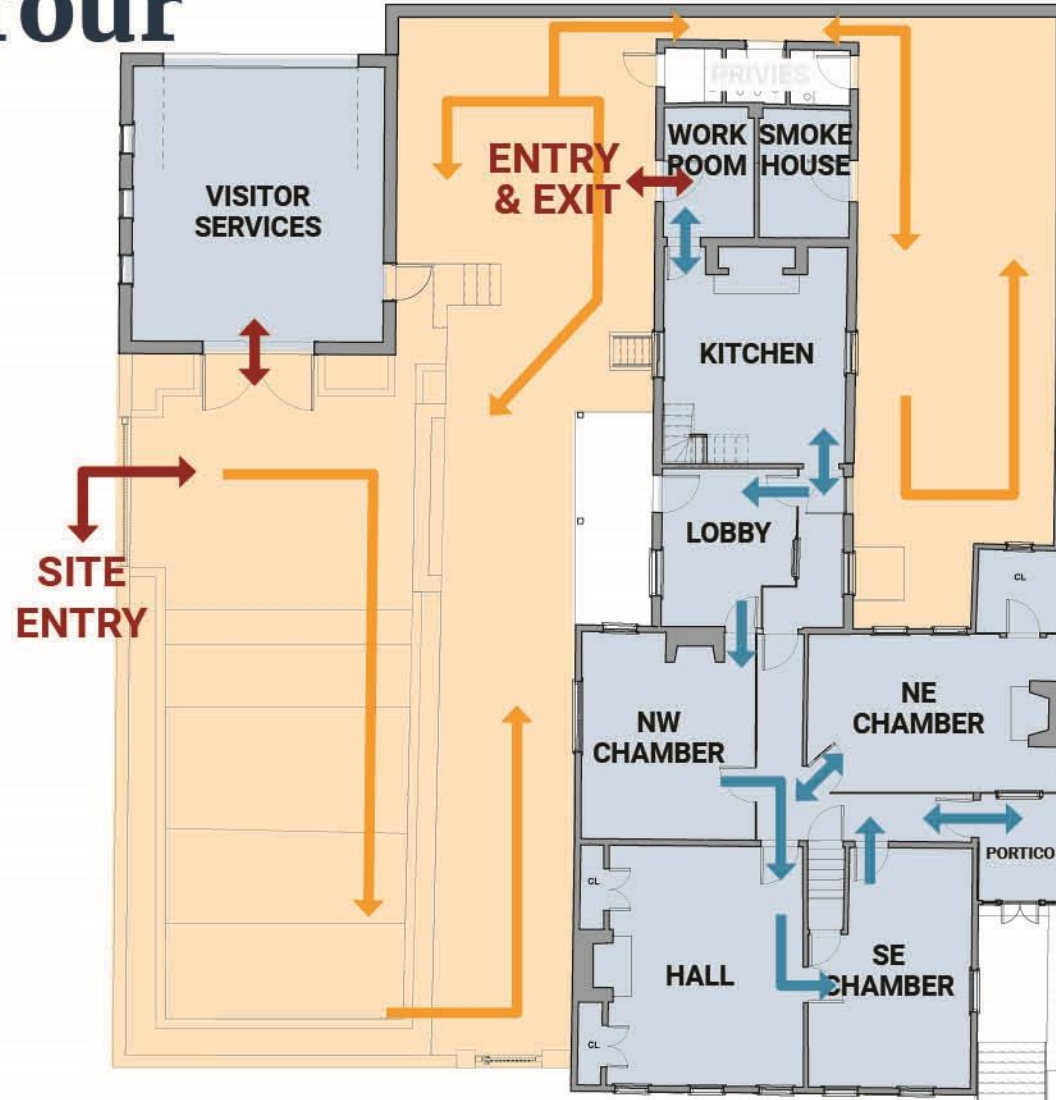
STAFFED Accessible Tour



- Exterior Usage
- Interior Usage
- Exterior Circulation
- Interior Circulation
- Entries/Exits



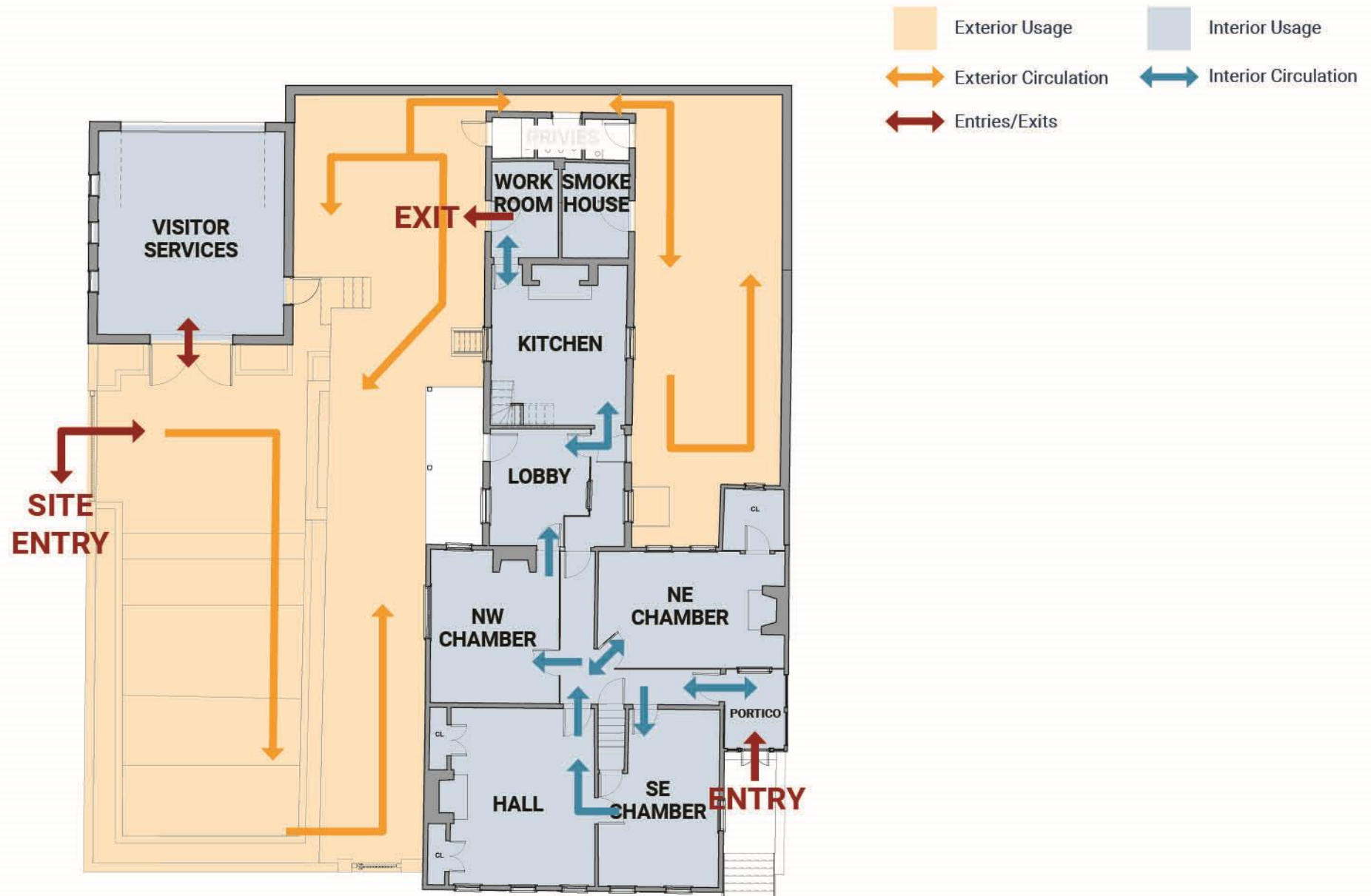
STAFFED Self-Guided Tour



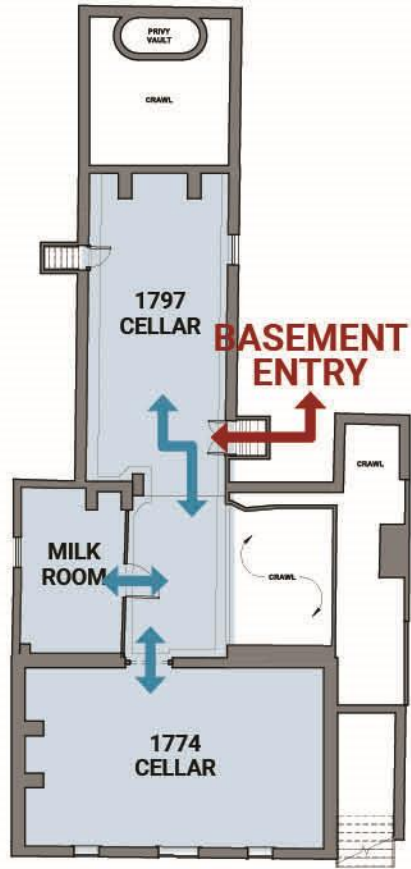
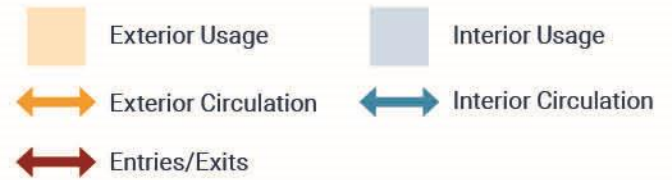
- Exterior Usage
- Interior Usage
- Exterior Circulation
- Interior Circulation
- Entries/Exits



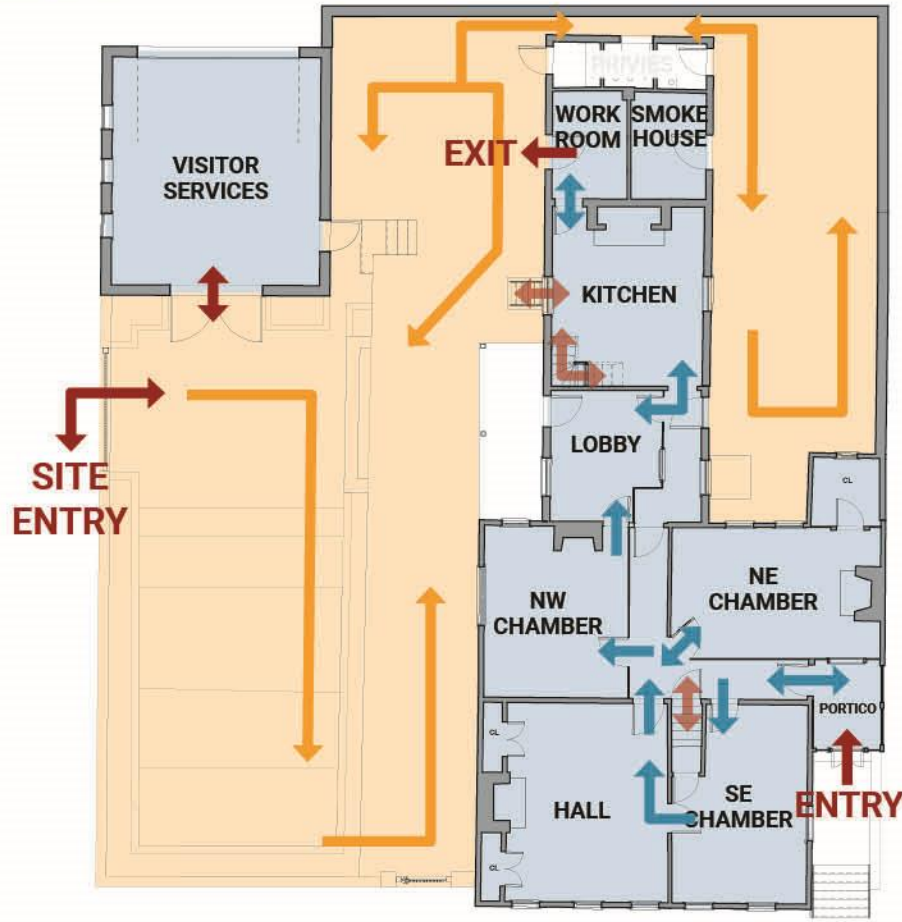
STAFFED Guided Tour



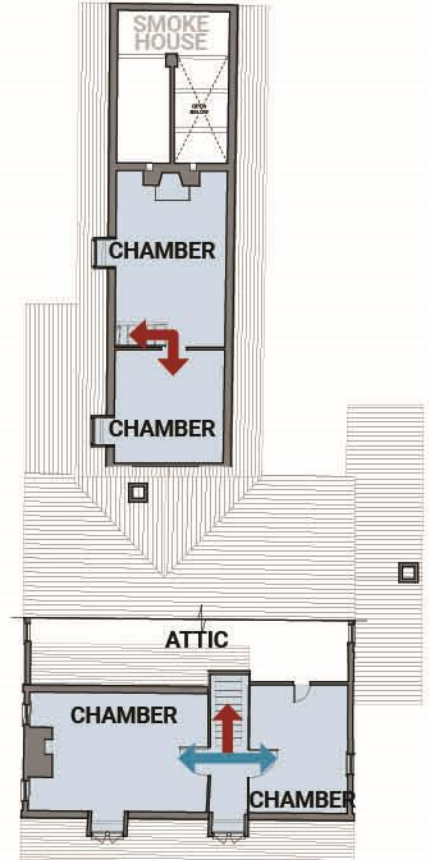
STAFFED (SPECIAL) Behind the Scenes



BASEMENT LEVEL



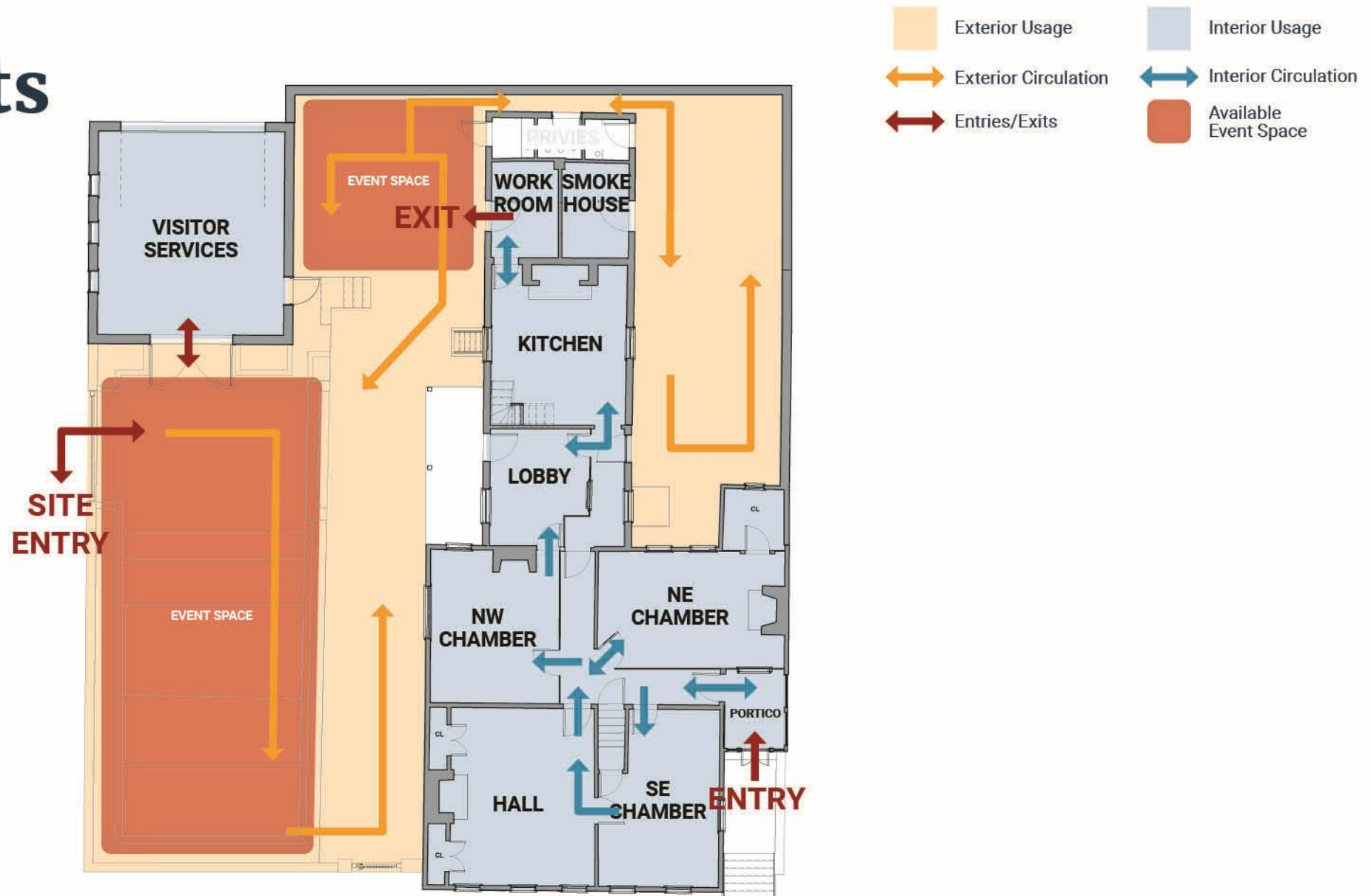
GROUND LEVEL



SECOND LEVEL



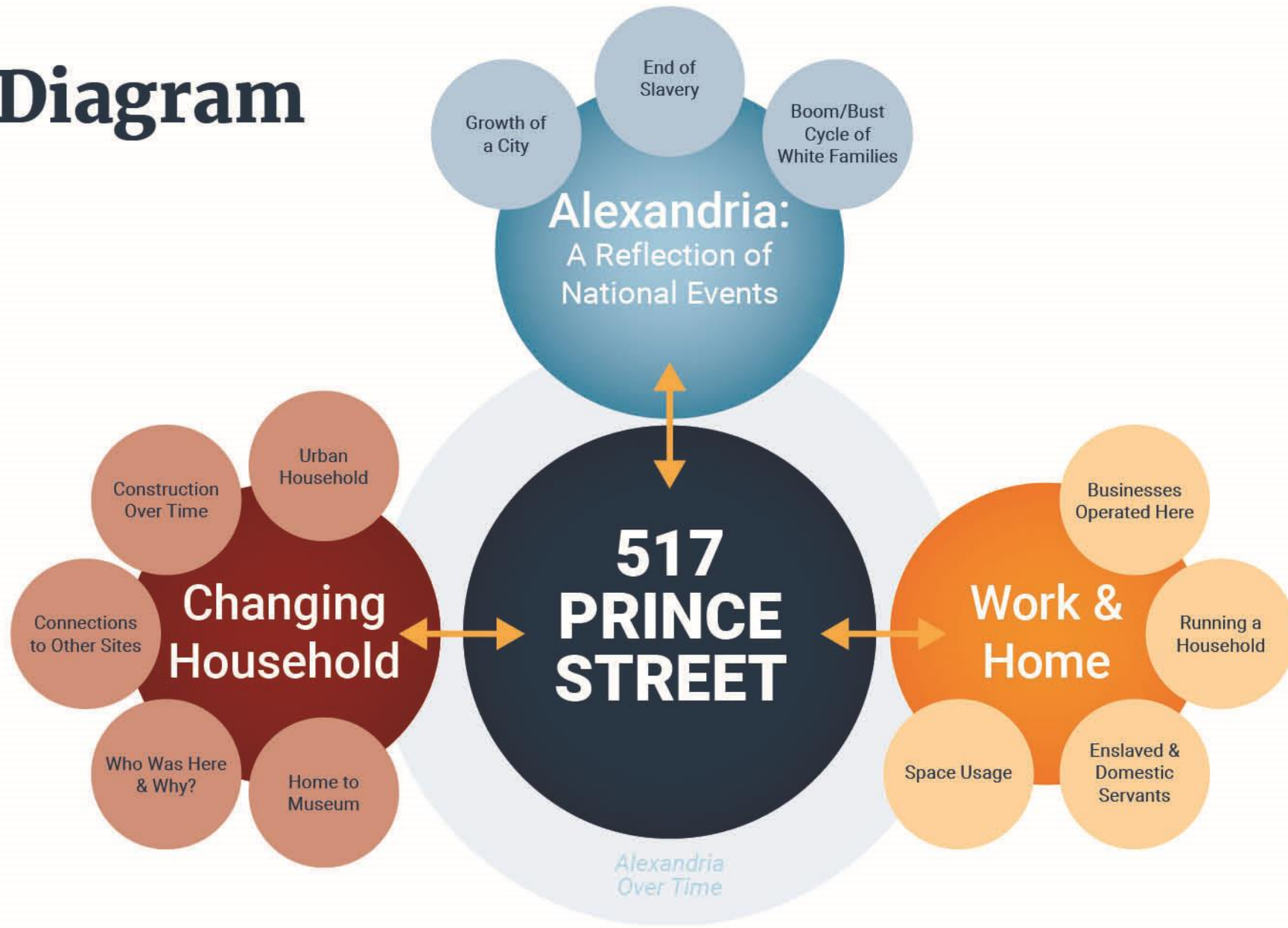
STAFFED On-Site Events



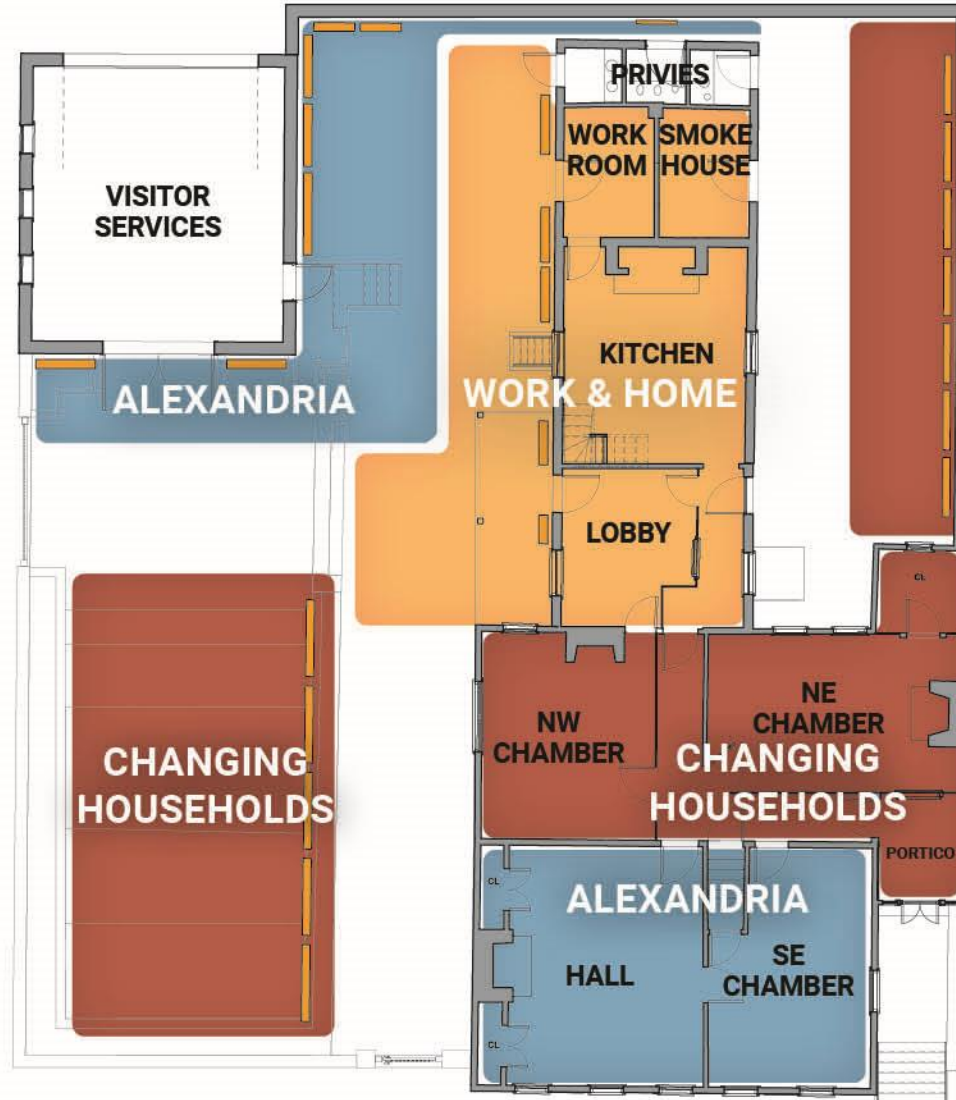
Interpretation



Story Diagram



Story Plan



-  Alexandria: A Reflection of National Events
-  Changing Households
-  Work & Home



*Feedback /
Discussion*



THANK YOU!





Current First Floor Plan

KEY

FIRST PHASE - 1774	FIFTH PHASE - 1816
SECOND PHASE - 1784	SIXTH PHASE - 1854-1858
THIRD PHASE - 1784-1797	SEVENTH PHASE - 1916-1971
FOURTH PHASE - 1797	EIGHTH PHASE - 2001-2002
	NINTH PHASE - 2021-2022



Murray-Dick-Fawcett House

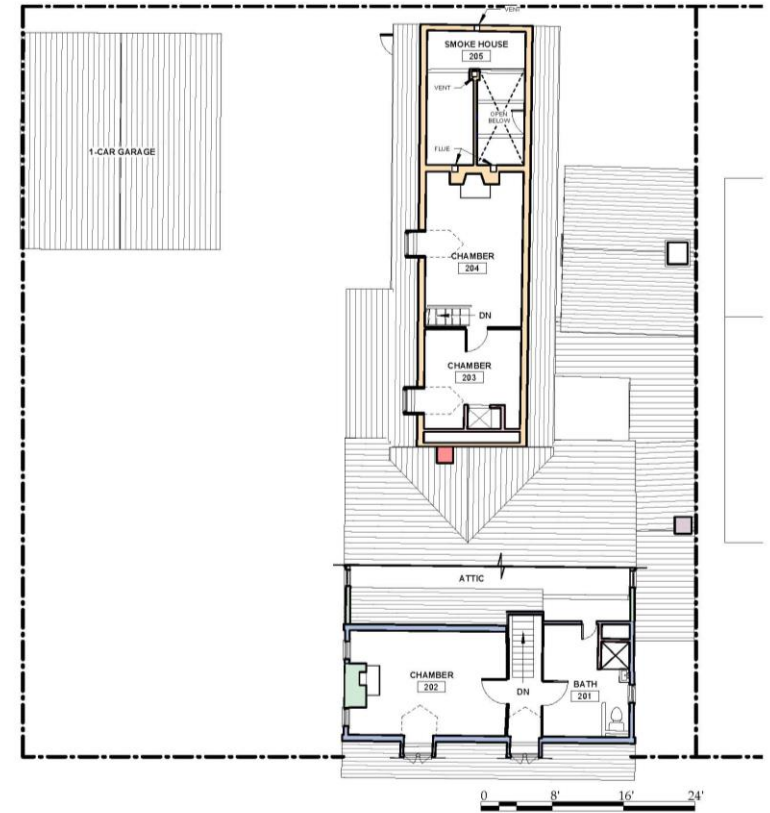


Current Basement Floor Plan



KEY

FIRST PHASE - 1774	NINTH PHASE - 2021-2022
SECOND PHASE - 1784	SEVENTH PHASE - 1915-1971
THIRD PHASE - 1784-1797	EIGHTH PHASE - 2001-2002
FOURTH PHASE - 1797	SIXTH PHASE - 1854-1858
FIFTH PHASE - 1816	



Current Second Floor Plan



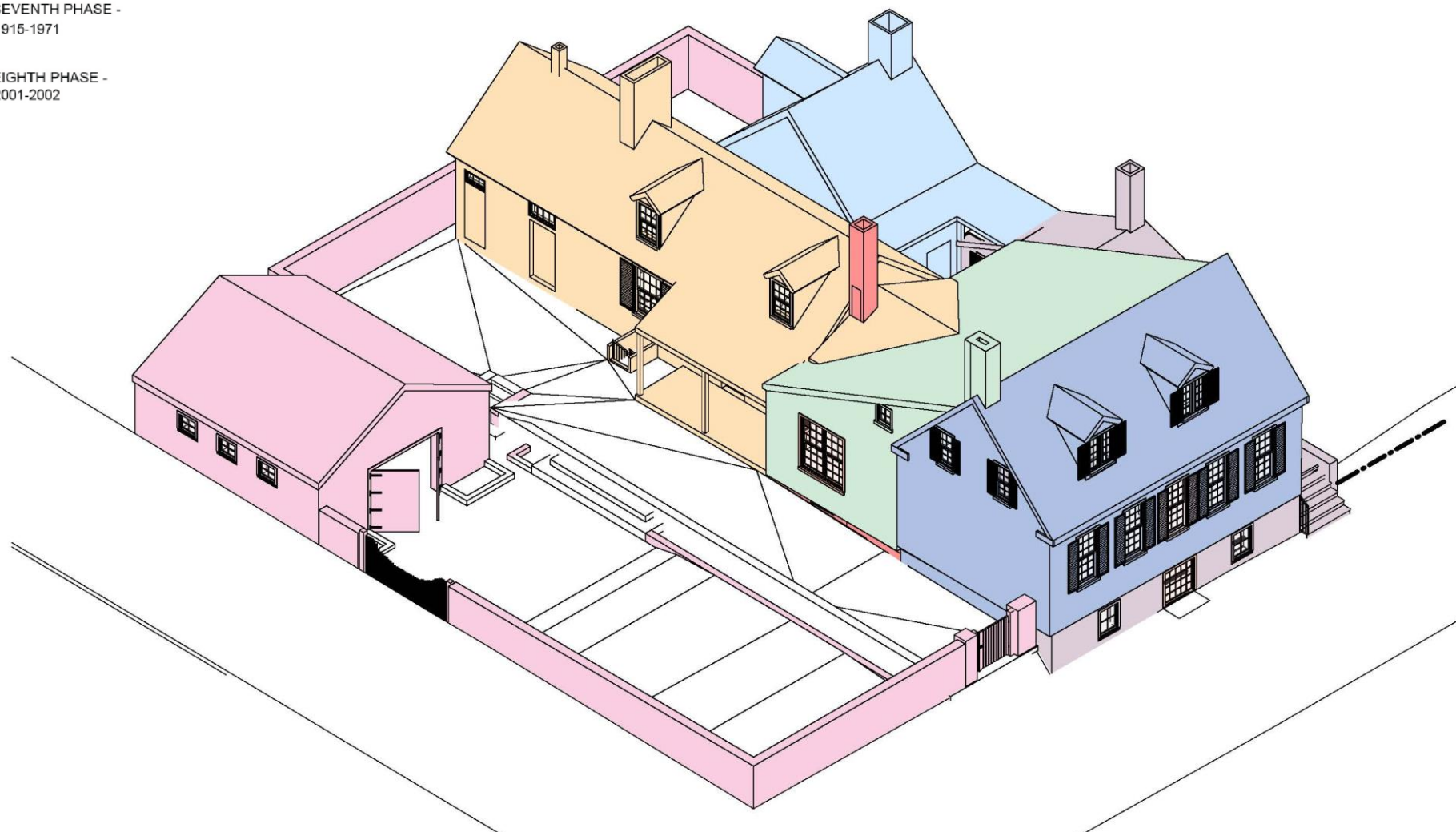
KEY

FIRST PHASE - 1774	NINTH PHASE - 2021-2022
SECOND PHASE - 1784	SEVENTH PHASE - 1915-1971
THIRD PHASE - 1784-1797	EIGHTH PHASE - 2001-2002
FOURTH PHASE - 1797	SIXTH PHASE - 1854-1858
FIFTH PHASE - 1816	



Murray-Dick-Fawcett House

- | | |
|--|--|
|  FIRST PHASE -
1774 |  FIFTH PHASE -
1816 |
|  SECOND PHASE -
1784 |  SIXTH PHASE -
1854-1858 |
|  THIRD PHASE -
1784-1797 |  SEVENTH PHASE -
1915-1971 |
|  FOURTH PHASE -
1797 |  EIGHTH PHASE -
2001-2002 |



MDF House 3-D View